

Table of Contents

1	EAST KOOTENAY	2
1.01	Definitions	2
1.02	Arrestor Bed Maintenance – Fording Mine Road	3
1.03	Enhanced Vegetation Control	5
1.04	Highway Crossing Infrastructure	6
1.05	Horizontal Drain System Maintenance	8
1.06	Invasive Plants Management	10
1.07	Multiplate Drainage Maintenance – Hartley Creek	12
1.08	Salt Containment Infrastructure Maintenance	13
1.09	Vehicle Inspection Station Maintenance	16
1.10	Wildlife Disposal Facility Maintenance	19
1.11	Wildlife Exclusion System Maintenance	21

1 EAST KOOTENAY

1.01 Definitions

In these Local Area Specifications, capitalized terms will have the corresponding meanings as set out in Article 1 of this Agreement and Section 1 of this Schedule 1 (“Specifications”), and as set forth below:

“Environmental Management Plan Process for Wildlife Static Pile Composting” is documentation prepared by the Contractor as part of its environmental management plan and accepted by the Province. It includes processes and recognized best practices for wildlife static pile composting (including but not limited to the planning, timing, worker health and safety, signage, handling, preparation, placement, layering, monitoring, turning, responding to issues and material removal) such as the Alberta Large Animal Mortality Composting Agdex 400/29-4, Cornell Waste Management Institute Composting Roadkill, British Columbia Ministry of Agriculture Large Animal Disposal BC384.30-2 and United States Department of Agriculture WDM Technical Series Wildlife Carcass Disposal.

“Invasive Plants” means any invasive alien plant species that has the potential to pose undesirable or detrimental impacts on humans, animals, or ecosystems.

“Salt Containment Infrastructure” means a storage facility, including all of its components that is used for the storage and loading/unloading of salt for winter maintenance operations including, but not limited to the salt shed, fabric/steel roofing, pit floor, evapotranspiration liner, containment pad, and skirt.

“Wildlife Exclusion System” means a device including all its components (including, but not limited to fences, gates, passageways and related hardware) located within the Right-of-way designed to restrict wildlife from accessing the Highway, including but not limited to fencing, one-way gates and jump outs, Ungulate Guards, human and vehicle access gates and Overpasses and Underpasses.

1.02 Arrestor Bed Maintenance – Fording Mine Road

1.02.1 Outcome

To provide safe, functional, and available resistance lanes for runaway vehicles.

1.02.2 Routine Maintenance Services

PM1.02.2-1 Respond to an arrestor bed incident as follows:

Performance Criteria	Response
a) Repair and replace damaged infrastructure that is unsafe, or has the potential to become unsafe	immediately
b) Repair and replace damaged infrastructure that is not functionally compromised	7 days

PM1.02.2-2 Remove snow from the full width of the arrestor beds when Winter Accumulations exceed 25 centimetres in depth.

PM1.02.2-3 Remove Debris from the arrestor beds in accordance with PM1.08.2-1 of the General Specifications of this Schedule 1 ("Specifications") with the response of a Highway Classification 7.

Notes:

- 1) The arrestor beds are located in the Right-of-Way, south of Elkford on the Fording Mine Road at the following locations:

#	Distance from Landmark	GPS Coordinates	Lane Access
1	1.4 km from the junction of Highway 43	50° 1' 55.81" N 114° 54' 32.58" W	Northbound
2	2.5 km from the junction of Highway 43	50° 2' 22.28" N 114° 54' 1.19" W	Northbound

1.02.3 Quantified Maintenance Services

PM1.02.3-1 Perform Grading annually in accordance with General Specification 1.03 of this Schedule 1 ("Specifications").

PM1.02.3-2 Re-establish the arrestor bed surface within 15 days in accordance with PM1.03.3-1 of the General Specifications of this Schedule 1 ("Specifications").

PM1.02.3-3 Perform Gravelling in accordance with General Specification 1.05 of this Schedule 1 ("Specifications") with the response of a Highway Classification 7.

PM1.02.3-4 Perform brushing, tree, and Danger Tree removal in accordance with General Specification 4.02 of this Schedule 1 ("Specifications") with the response of a Highway Classification 7.

1.02.4 Materials and/or Procedures

Additional materials and/or procedures requirements are as follows:

- a) Remain at the site(s) until the functionality of the arrestor bed has been restored and the site(s) are safe and available for Highway Users; and
- b) Comply with the Ministry's Traffic Management Manual for Work on Roadways for long duration runaway lane closures to restore damaged Highway Infrastructure if so required by the Traffic Management Manual for Work on Roadways.

1.03 Enhanced Vegetation Control

1.03.1 Outcome

To cut vegetation to a larger width, exceeding the performance measures in the General Specifications 4.01 of this Schedule 1 ("Specifications), to improve visibility of wildlife on numbered Highways.

1.03.2 Routine Maintenance Services

There are no Routine Maintenance Services.

1.03.3 Quantified Maintenance Services

PM1.03.3-1 Cut vegetation from Shoulder tops and to a width of 4.0 metres from the Shoulder edge that exceeds 25 centimetres in height on the Highways numbered routes 3, 43, 93, 93/95, 95, and 95A, as well as their associated on-ramps and off-ramps.

Notes:

- 1) Enhanced vegetation control may be performed at other locations as specified by the Province in writing.

1.03.4 Materials and/or Procedures

Refer to Subsection 1.6 of this Schedule 1 ("Specifications").

Additional material and/or procedures requirements are as follows:

- a) Cut vegetation to the lowest possible height considering uneven terrain, ensuring that no soil is exposed and vegetation roots remain intact; and
- b) The 4.0 metre cutting swath for Dirt and Gravel Highways is to be measured from the outside edge of the Travelled Lane.

1.04 Highway Crossing Infrastructure

1.04.1 Outcome

To provide safe passage of pedestrians and animals underneath or beside a Highway.

1.04.2 Routine Maintenance Services

- PM1.04.2-1** Respond immediately to restrict all access to Highway Crossing Infrastructure, as directed by the Province.
- PM1.04.2-2** Repair or replace immediately, as directed by the Province, any damaged or deteriorated Highway Crossing Infrastructure that has been structurally compromised, as determined by the Province.
- PM1.04.2-3** Repair or replace within 3 months, any damaged or deteriorated Highway Crossing Infrastructure that has not been structurally compromised, as determined by the Province.
- PM1.04.2-4** Remove Debris immediately from the surfaces of floors, pedestrian paths or stairways.
- PM1.04.2-5** Remove Accumulations, surface contaminants and chemicals by June 30th of each calendar year from all surfaces.
- PM1.04.2-6** Remove Debris within 1 month that impedes the passage of animals in animal accessed Highway Crossing Infrastructure.

1.04.3 Quantified Maintenance Services

- PM1.04.3-1** Repair within 24 hours damaged or deteriorated surfaces on underpass floors, pedestrian paths or stairways.
- PM1.04.3-2** Repair within 6 months other damaged or deteriorated surfaces.

Specific Requirements:

- a) Maintain Highway Crossing Infrastructure within Rest Areas in accordance with the response of the adjacent Highway Classification.

1.04.4 Materials and/or Procedures

Refer to Subsection 1.6 of this Schedule 1 ("Specifications").

Additional material and/or procedures requirements are as follows:

- a) Use materials in accordance with the same type and quality on the existing Highway Crossing Infrastructure.

1.04.5 Routine Maintenance Services Cap

\$50,000 – for each occurrence, the cost to repair or replace Highway Crossing Infrastructure.

1.04.6 Warranty

Refer to Section 3 of this Schedule 1 (“Specifications”).

1.05 Horizontal Drain System Maintenance

1.05.1 Outcome

To provide fully functional Highway horizontal drain systems.

1.05.2 Routine Maintenance Services

- PM1.05.2-1** Repair or replace within 30 days, damaged or deteriorated collector systems and drains.
- PM1.05.2-2** Cut vegetation that exceeds 20 cm in height at horizontal drain outlets and collector system cleanouts to ensure they function as designed.
- PM1.05.2-3** Inspect all horizontal drain systems annually.
- PM1.05.2-4** Flush and clean all horizontal drain systems once in the First Contract Year.
- PM1.05.2-5** Flush and clean all horizontal drain systems after the First Contract Year, as directed by the Province.

Notes:

- 1) The horizontal drain systems are identified in Appendix A.

1.05.3 Materials and/or Procedures

Refer to Subsection 1.6 of this Schedule 1 ("Specifications").

Additional materials and/or procedures requirements are as follows:

- a) Maintain access to horizontal drain system sites for cleaning;
- b) Flush the drain casings of sediment and clean the slots / perforations of obstructions and caking; and
- c) Test, collect and record flow rates, drain conditions, and length of insertion by the cleaning tools immediately before and after each flushing/cleaning.

Appendix A

Name	Type	Construction Year	Location Details	Fan Number	No. of Drains
Hwy 3 - Fernie Slide	Unknown	Unknown	1 km south of Fernie Ski hill Road on Hwy 3	Unknown	21
Hwy 3 - Sparwood Scale	Unknown	Unknown	2.85 km north of the BC/Alberta Border on Hwy 3	Unknown	1
Hwy 3/95 - Moyie Bluffs ¹	Unknown	Unknown	820m east of Loop Road on Hwy 3/95	Unknown	1
Hwy 93/95 - Coys Hill Slump ²	Corrugated steel	2014	0.9 km north of Columbia Lake Road (north end) on Hwy 93/95	Unknown	2
Hwy 95A -- Porteous Road	Unknown	Unknown	Jct of Porteous Road on Hwy 95A	Unknown	Unknown
Hwy 95A - Sand Hill	Unknown	Unknown	1.978 km south of Jct of Hwy 93/95 on Hwy 95A	Unknown	1
Corbin Road	Unknown	Unknown	1 km south of Jct of Hwy 3 on Corbin Road	Unknown	6

Additional Horizontal Drain Details:

- 1) Hwy 3/95 - Moyie Bluffs - two 300 mm diameter, 540 metre length, 6 manholes and 2 clean outs
- 2) Hwy 93/95 - Coys Hill Slump - embankment drains 2.5 metre deep with outfalls, two 150 mm diameter, 80 metres length and geo-membrane lined ditch

1.06 Invasive Plants Management

1.06.1 Outcome

To minimize the introduction and spread of Invasive Plants on Highways and Gravel Pits.

1.06.2 Routine Maintenance Services

PM1.06.2-1 Meet annually, with the agency conducting Invasive Plant management for the Province, during development of the Quantified Maintenance Services to coordinate planned activities.

PM1.06.2-2 Inspect all Gravel Pits and material sources annually to ensure they are free of Invasive Plants.

PM1.06.2-3 Report Invasive Plant conditions to the agency conducting Invasive Plant management for the Province, as follows:

Performance Criteria	Response
a) Prior to the disturbance of knotweed species that restricts Sight Distance or creates a condition that is unsafe or has the potential to become unsafe	immediately
b) Any Invasive Plant infestations on Highways and Gravel Pits	2 d

Notes:

- 1) Only the exposed, active areas of the Gravel Pits are to be considered.

1.06.3 Quantified Maintenance Services

PM1.06.3-1 Seed specific areas of exposed soils exceeding 1 metre up the Shoulder sideslope and the backslope due to ditch maintenance.

Notes:

- 1) The Standard Specifications for Highway Construction describes the revegetation requirements including, but not limited to blending, seed analysis and application timing.

1.06.4 Materials and/or Procedures

Refer to Subsection 1.6 of this Schedule 1 ("Specifications").

Additional materials and/or procedures requirements are as follows:

- a) Comply with the Best Practices for Managing Invasive Plants on Roadsides;

- b) Incorporate Invasive Plant management when planning and performing Quantified Maintenance Services;
- c) Seed side-cast ditch materials;
- d) Seek approval from the Province if disturbance of knotweed species is required;
- e) The Contractor may submit a plan for approval by the Province for the use of herbicides, as a control measure for knotweed or other Invasive Plants;
- f) Herbicides are to be applied by a certified pesticide applicator;
- g) Do not use gravel materials contaminated with Invasive Plants, unless a rectification process is submitted and approved by the Province; and
- h) Report Invasive Plants to the agency conducting Invasive Plant management for the Province online or using the Province's smartphone application or the provincial toll-free service.

1.06.5 Warranty

Refer to Section 3 of this Schedule 1 ("Specifications").

1.07 Multiplate Drainage Maintenance – Hartley Creek

1.07.1 Outcome

To provide unobstructed drainage for the Hartley Creek Multiplate.

1.07.2 Routine Maintenance Services

PM1.07.2-1 Monitor the upstream and downstream channels of the Multiplate for bed loading deposits as follows:

Performance Criteria	Response
a) During High Water Flow	daily or more often as required
b) All other times	monthly

PM1.07.2-2 Remove any Debris, bed load, Winter Abrasives, sedimentation, or obstructions from the multiplate and the upstream and downstream channels within the Right-of-Way as follows:

Performance Criteria	Response
a) $\geq 50\%$ reduction in water flow capacity	immediately
b) All other times	annually

Notes:

- 1) The Hartley Creek Multiplate is located on Highway 3, approximately 3 km east of Fernie.

1.07.3 Materials and/or Procedures

Refer to Subsection 1.6 of this Schedule 1 ("Specifications").

Additional materials and/or procedures requirements are as follows:

- a) Obtain required permits and approvals prior to initiating work in accordance with the Contractor's environmental management plan;
- b) Comply with the "A Users' Guide for Changes In and About a Stream in British Columbia Requirements and Best Management Practices for Making Changes In and About a Stream in British Columbia";
- c) Remove Debris, bed load, Winter Abrasives, sedimentation, or obstructions within allowable timing windows; and
- d) Place removed Debris and materials in accordance with local regulations and in locations as directed by the Province.

1.08 Salt Containment Infrastructure Maintenance

1.08.1 Outcome

To provide for the safe handling and storage of salt and Winter Abrasives on provincial land and monitor, maintain, repair and replace provincially owned Salt Containment Infrastructure.

1.08.2 Routine Maintenance Services

- PM1.08.2-1** Off-load salt onto an evapotranspiration liner or containment pad, if available and/or store immediately within the salt shed.
- PM1.08.2-2** Retrieve and return to the salt shed immediately, any salt spillage over the top of skirt that lines the inside of the salt shed.
- PM1.08.2-3** Remove immediately, any salt or salt contaminated material on the pit floor to a depth of 40 centimetres for use with Winter Abrasives when processing.
- PM1.08.2-4** Notify the Province immediately of any damage to the containment pond, including but not limited to the liner, berm or fencing.
- PM1.08.2-5** Temporarily repair damaged or deteriorated salt shed components immediately, that permits water infiltration.
- PM1.08.2-6** Permanently repair within 8 weeks, any temporarily repaired steel/fabric salt shed components that permits water infiltration.
- PM1.08.2-7** Permanently repair within 2 weeks, any temporarily repaired wooden salt shed components that permits water infiltration.
- PM1.08.2-8** Inspect and document the condition of Salt Containment Infrastructure as follows:

Performance Criteria	Response
a) Evapotranspiration water/brine levels	daily or more often when required
b) Water in the containment pond to prevent over-flowing	daily or more often when required
c) Steel/fabric salt sheds including, but not limited to, the steel structural components including base plates, wire cross-bracing, fabric roof, fabric lashing, winches and vents, lock-blocks and protective skirt	bi-annually in the spring and fall or in accordance with the manufacturer's specifications and recommendations, whichever is more frequent
d) Wooden salt shed including but not limited to structural condition and weatherproof exterior	annually
e) Salt shed apron and containment pad surfaces	annually
f) Evapotranspiration liner surface absorption	daily or more often when required

PM1.08.2-9 Maintain the superstructure of steel/fabric salt sheds as follows:

Performance Criteria	Response
a) Remove grime and encrusted salt off the salt shed's steel interior	annually
b) Lubricate winches	annually
c) Re-tension-web and fabric roof lashing	annually
d) Re-tighten fastening bolts	annually
e) Remove surface rust	annually

PM1.08.2-10 Repair or replace Salt Containment Infrastructure as follows:

Performance Criteria	Response
a) Damaged or deteriorated containment pond components, including but not limited to the liner, berm or fencing	immediately
b) Loss of absorption for a compact surface where water is ponding on the evapotranspiration liner	immediately
c) Saturation or overflow of evapotranspiration water/brine	when required
d) Damaged or deteriorated wooden salt shed components	within 2 weeks of the bi-annual inspection or as noted in PM1.06.2-8
e) Damaged or deteriorated steel/fabric salt shed components	within 8 weeks of the bi-annual inspection or as noted in PM 1.06.2-8 if salt and/or Winter Abrasive with salt is present or prior to when the salt and/or Winter Abrasive with salt is scheduled to be stored
f) Cracked, chipped edges, potholes, settling/ponding, or base failure of surfaces	General Specifications 1.01, 1.06 and 1.10 in Schedule 1 ("Specifications") for a Class 4 Highway

PM1.08.2-11 Replace annually, the top 10 centimetres of salt contaminated material on the evapotranspiration surface with free draining material and use the removed salt contaminated material for Winter Abrasives processing.**Notes:**

- 1) The Province inspection H-form is to be used for inspections of steel/fabric salt sheds;
- 2) PM1.08.2-10 (f) includes possible Quantified Maintenance Services; and
- 3) Salt shed locations are provided in Appendix A of Schedule 13 ("Gravel Licence").

1.08.3 Materials and/or Procedures

Refer to Subsection 1.6 of this Schedule 1 ("Specifications").

Additional materials and/or procedures requirements are as follows:

- a) Load salt and/or Winter Abrasive containing salt on a containment pad or the evapotranspiration liner surface;
- b) Store salt and/or Winter Abrasive containing salt at a height below the top 30 centimetres of the skirt within a steel/fabric salt shed and ensure the top of the lock block wall remains free of salt accumulation;
- c) Park heavy equipment used for loading salt or Winter Abrasive containing salt, on the containment pad, evapotranspiration liner or within the salt shed;
- d) Prevent spillage onto the pit floor when transporting salt;
- e) Store Winter Abrasive containing salt under cover or on a containment pad or on an evapotranspiration liner, if supplied;
- f) Use a spill proof apron for salt hoppers to contain salt and facilitate retrieval;
- g) Store salt contaminated material for future use with Winter Abrasives on a containment pad or evapotranspiration liner or in a salt shed;
- h) Prevent salt contaminated materials from being tracked from the containment pad or evapotranspiration liner and use a containment pond for disposal, if one exists on site;
- i) Maintain an open catchment area adjacent to the salt shed exterior walls to accommodate unobstructed snow shedding off the structure;
- j) Remove snow from the roof of steel/fabric salt shed and adjust the roof tension after the snow accumulation has been removed in accordance with the manufacturer's specifications and recommendations;
- k) Reseal exposed surfaces following the removal of surface rust with zinc-rich primer/paint;
- l) Maintain and repair damaged or deteriorated salt shed components in accordance with the manufacturer's specifications and recommendations;
- m) Use engineered designs for all repairs, modifications or replacement to steel/fabric salt shed structural components, including but not limited to the fabric roof, prepared by a Professional Engineer, retained by the Contractor; and
- n) Securely lock gates and post signage to prevent unauthorized access to fenced containment ponds.

1.08.4 Routine Maintenance Services Cap

\$50,000 – for each occurrence, the cost to repair or replace a salt shed.

1.09 Vehicle Inspection Station Maintenance

1.09.1 Outcome

To facilitate the safe and efficient operation of Vehicle Inspection Stations.

1.09.2 Routine Maintenance Services

PM1.09.2-1 Provide Services at the Vehicle Inspection Station areas in accordance with the response identified in the Vehicle Inspection Station plan in Appendix B.

Specific Requirements:

- a) Remove Winter Accumulations from all Travelled Lanes and vehicle accessible portions of the Vehicle Inspection Station in accordance with PM3.01.2-1 (a) of the General Specifications of this Schedule 1 "Specifications").

Notes:

- 1) The Contractor is not responsible for the buildings or for the management and maintenance of the weigh scale, electrical components and the water and septic systems.

1.09.3 Quantified Maintenance Services

PM1.09.3-1 Provide Services at the Vehicle Inspection Station areas in accordance with the response identified in the Inspection Station plan in Appendix B.

Notes:

- 1) The Contractor is not responsible for the buildings or for the management and maintenance of the weigh scale, electrical components and the water and septic systems.

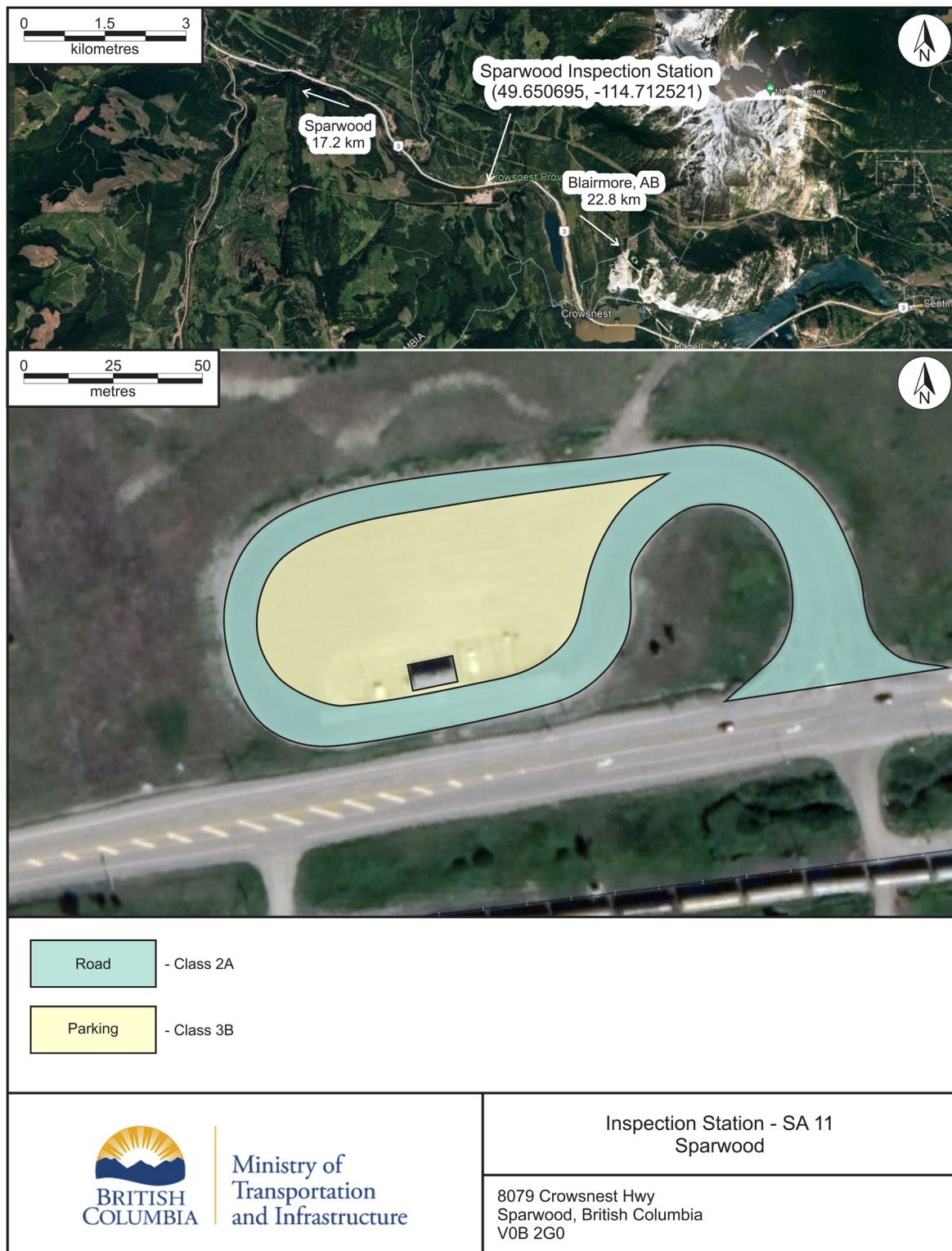
1.09.4 Materials and/or Procedures

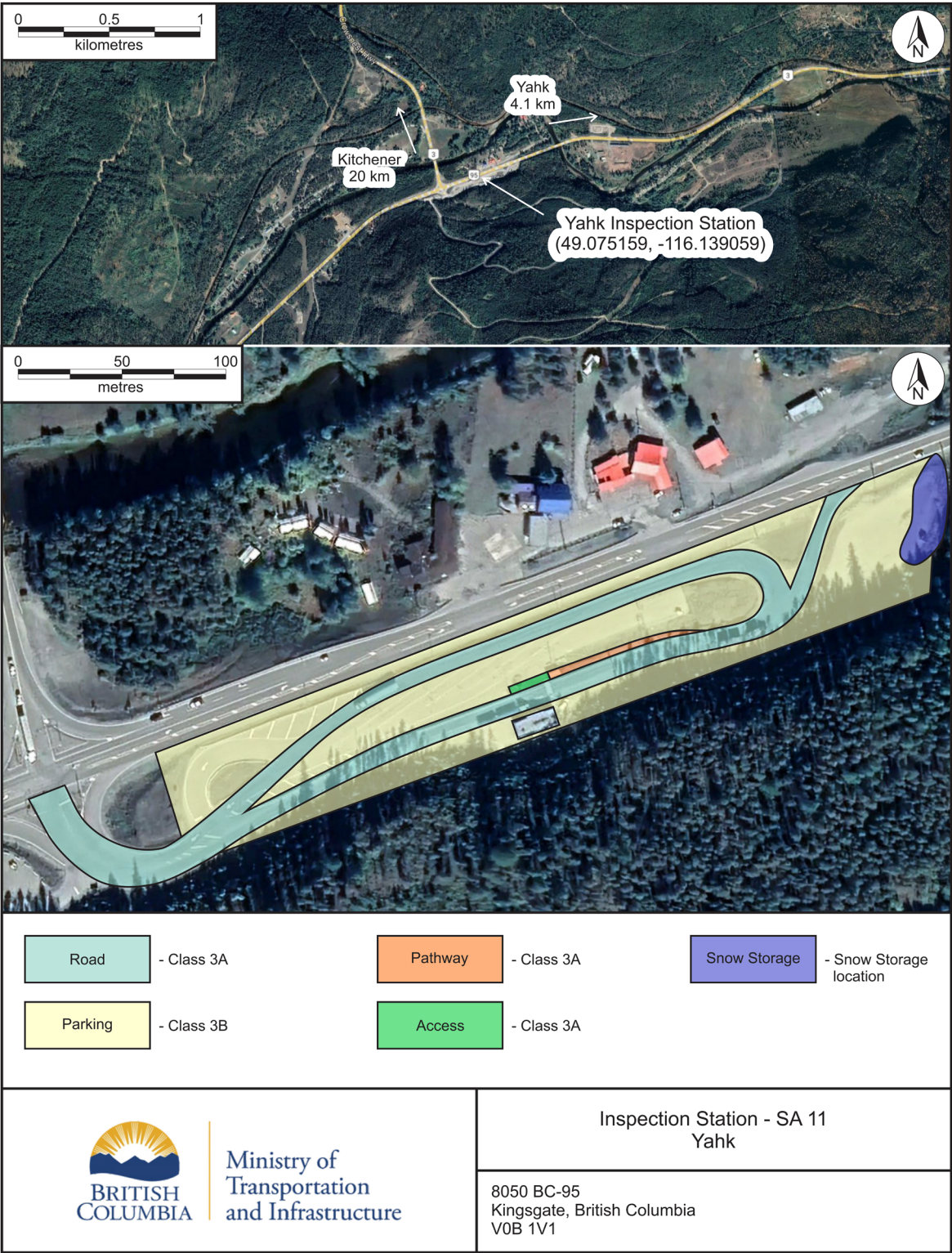
Refer to Subsection 1.6 of this Schedule 1 ("Specifications").

1.09.5 Warranty

Refer to Section 3 of this Schedule 1 ("Specifications").

Appendix B Vehicle Inspection Station Plans





1.10 Wildlife Disposal Facility Maintenance

1.10.1 Outcome

To provide a safe and fully functioning facility to dispose of wildlife killed on Highways.

1.10.2 Routine Maintenance Services

- PM1.10.2-1** Dispose wildlife carcasses in accordance with the Contractor's Environmental Management Plan Process for Wildlife Static Pile Composting.
- PM1.10.2-2** Notify the Province immediately of any electrical fencing failures.
- PM1.10.2-3** Report to the Province within 3 days of any damaged or deteriorated components (including, but not limited to lock block structures, gates, signage, and related hardware) or operational deficiencies.
- PM1.10.2-4** Inspect and document the condition of the electrical fencing biannually in April and October or in accordance with the manufacturer's specifications and recommendations, whichever is more frequent.
- PM1.10.2-5** Inspect and document the condition of the solar panels biannually in April and October or in accordance with the manufacturer's specifications and recommendations, whichever is more frequent.
- PM1.10.2-6** Inspect and document the condition of all other components (including, but not limited to lock block structures, gates, signage, and related hardware) biannually in April and October.

Notes:

- 1) The Wildlife Disposal Facilities are located at the following locations:

Name	Highway / Road	Distance from Landmark
Elko Sand Pit	Kikomun Road No.2	1.8 km southwest of junction with Highway 3/93
Ryan Pit	3/95	0.41 km north of Ryan Station Road
Alexander Pit	3	1.8 km west of Crowsnest Rest Area

1.10.3 Quantified Maintenance Services

- PM1.10.3-1** Repair or replace within 24 hours, any damaged or deteriorated electrical fencing components.
- PM1.10.3-2** Repair or replace within 7 days, any damaged or deteriorated components (including, but not limited to lock block structures, gates, signage, and related hardware).

PM1.10.3-3 Transport composted organic materials to an off-site location for disposal, as directed by the Province.

1.10.4 Materials and/or Procedures

Refer to Subsection 1.6 of this Schedule 1 (“Specifications”).

Additional materials and/or procedures requirements are as follows:

- a) Comply with the Environmental Management Plan Process for Wildlife Static Pile Composting or otherwise at the written direction of the Province.
- b) Comply with provincial and federal animal disposal regulations including the British Columbia Environmental Management Act, and British Columbia Wildlife Act and Canadian Environmental Protection Act.
- c) Maintain the site pursuant to the issued Ministry of Environment Permit(s);
- d) Provide required composting carbon materials (including but not limited to sawdust, wood chips, and straw) and water;
- e) Maintain, repair, or replace electric fencing and solar panels in accordance with the manufacturer’s specifications and recommendations; and
- f) Use component materials (including, but not limited to lock block structures, gates, solar panels, signage, and related hardware) in accordance with the same type and quality of the wildlife disposal facility.

1.11 Wildlife Exclusion System Maintenance

1.11.1 Outcome

To provide a safe, fully functioning Wildlife Exclusion System.

1.11.2 Routine Maintenance Services

- PM1.11.2-1** Temporarily repair any damaged or deteriorated Wildlife Exclusion Systems immediately to ensure they function as designed.
- PM1.11.2-2** Notify the Province within 24 hours of any temporary repair to the Wildlife Exclusion System.
- PM1.11.3-3** Remove Debris and other items immediately, which are not part of the Highway by intention that decreases the effective height of the Wildlife Exclusion System.
- PM1.11.2-4** Remove Accumulations and other items, within 15 days which are not part of the Highway by intention, that are within 45 centimetres from the underside of the Ungulate Guard rails.
- PM1.11.2-5** Repair within 15 days, damaged or deteriorated Ungulate Guards
- PM1.11.2-6** Repair gaps that exceed 15 centimetres between fences and the ground surface.
- PM1.11.2-7** Inspect and document by May 31st of each calendar year, the condition of the Wildlife Exclusion Systems including, but not limited to the posts, base, braces, mesh, tension, staples and clamps, fence tie-ins, gates, tines and springs and locks and accessibility of passageways.
- PM1.11.2-8** Remove deadfall on the fence by September 30th of each calendar year.
- PM1.11.2-9** Commence removal of Winter Accumulations within 30 minutes upon being notified by the Province, to provide vehicle access to Wildlife Exclusion Systems.

1.11.3 Quantified Maintenance Services

- PM1.11.3-1** Repair within 7 days any damaged or deteriorated one way gates, human and vehicle access gates, jump outs, mesh, posts and passageways.
- PM1.11.3-2** Remove brush prior to inspections, within 3 metres of the fence that exceeds 10 centimetres in height.
- PM1.11.3-3** Restore the original height of the Wildlife Exclusion System if the height of the fence is compromised.

1.11.4 Materials and/or Procedures

Refer to Subsection 1.6 of this Schedule 1 ("Specifications").

Additional materials and/or procedures requirements are as follows:

- a) Use materials in accordance with the same type and quality on the Wildlife Exclusion System;
- b) Deadfall waste is not to be piled higher than 60 centimetres in height and not located within 3 metres of the fence;
- c) The effective height of fencing is 2.44 metres; and
- d) The effective height of a jump out is 1.75 to 2 metres, measured from the corner of the jump out.