



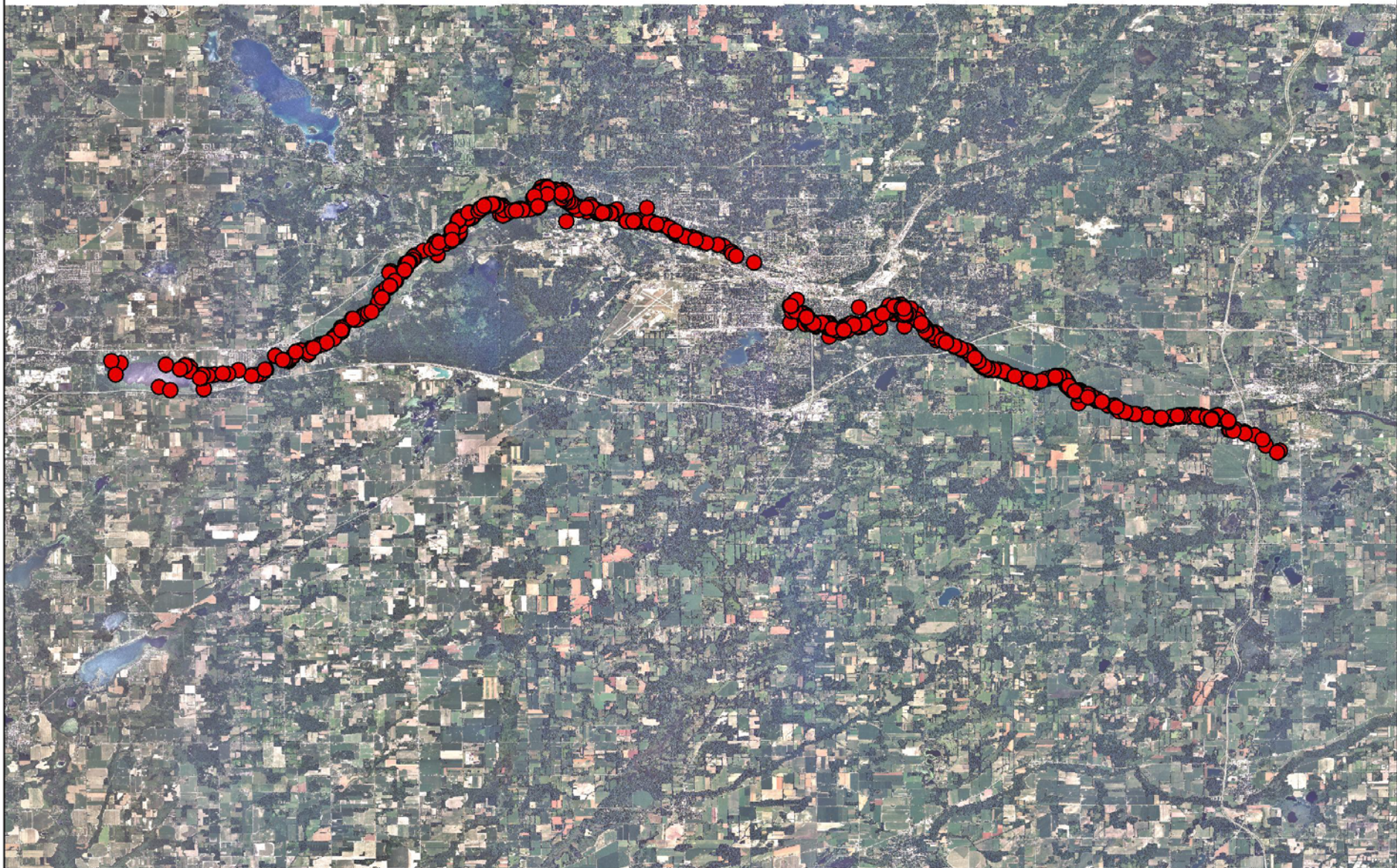
Lessons Learned from the Kalamazoo Pipeline Leak

Chris Battaglia—Focus Wildlife

Symposium on Land Based Spill Preparedness and
Response in British Columbia – BC Ministry of Environment
March 27, 2013

Focus Wildlife

- Professional emergency resource development organization working collaboratively with government, industry, NGOs, First Nations communities and other stakeholders



Legend

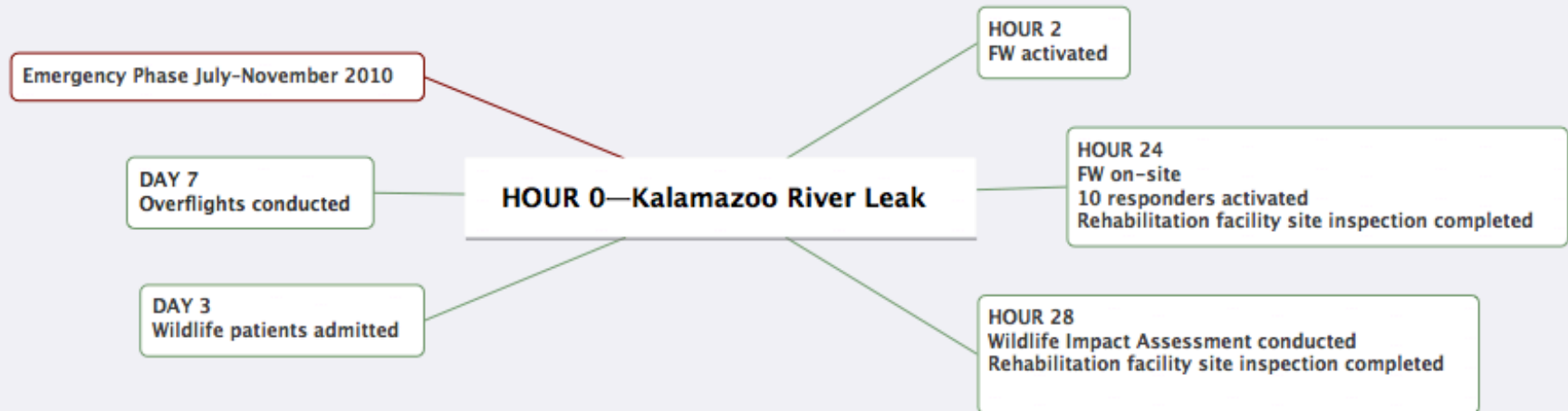
● Capture Locations

Enbridge Line 6b Wildlife Recovery
Turtle Capture Locations

0 5 10 Miles



Response Timeline



Responsible Party

- Clear Mandate
 - “Do whatever you need to do”
- Pre-existing
 - established relationship
 - Knowledge of response/rehabilitation process
 - Knowledge of specific corporate/org culture

Responsible Party

- RP Liaison position
 - Office in response center
 - Logistics; procurement
 - Daily meetings
 - Strategy
 - Depth of understanding

Focus Wildlife Role

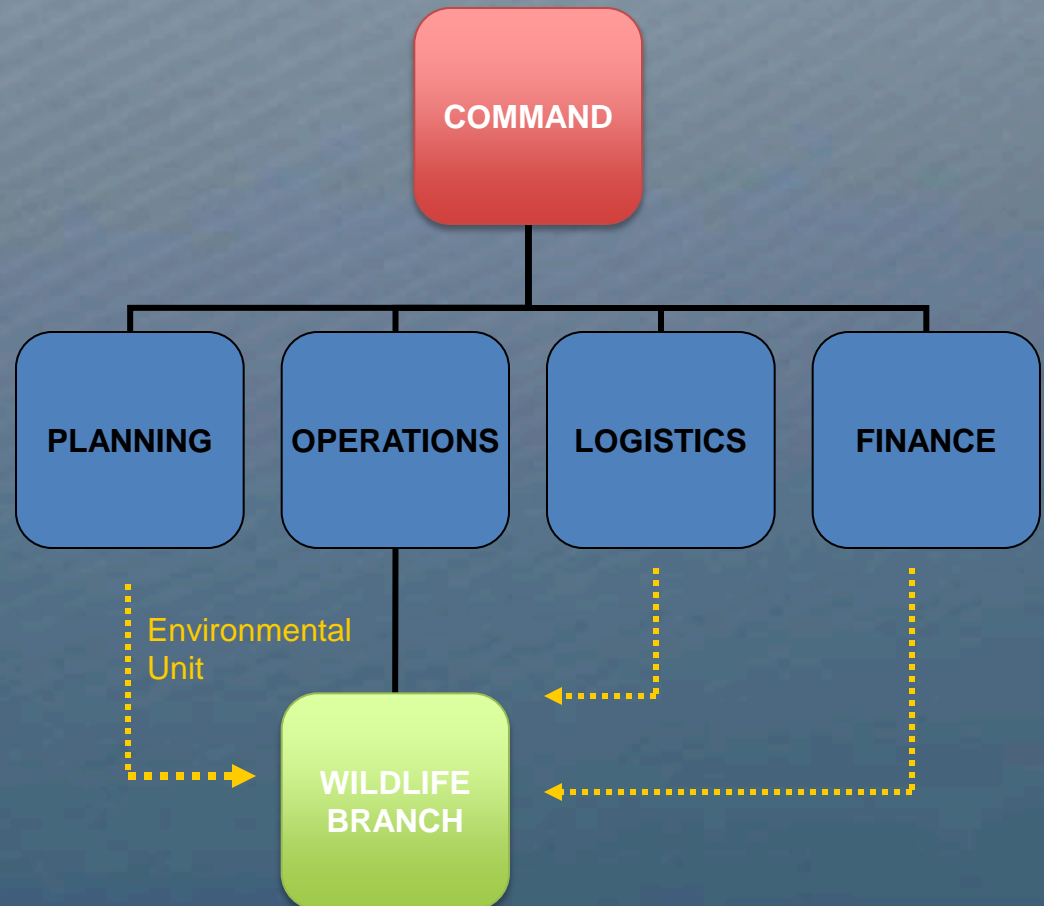
- Manage overall wildlife response
 - Field operations
 - Assessment
 - Search and collection
 - Deterrence
 - Establish and manage wildlife rehabilitation facility
 - Rehabilitation
 - Species specialists and subcontractors
 - Media
 - Public/Internal outreach (1 800)

Transparency



Communications

- Unified Command
 - Operations Section
 - Wildlife Branch



Communications



Communications

- Wildlife Branch Director/Deputy Director
 - Office in response center
 - Daily meetings
 - Strategic meetings
 - Key personnel involvement in joint decision-making process
 - Relationship based on trust and working knowledge of parties

Communications

- What worked
 - Consensus building
 - Goals and objectives
 - Strategies
 - Consensus prior to ICS involvement at UC level
 - Transparency of methods
 - Assistance with problem issues (reciprocal)
 - FW inclusion at higher level of planning

Communications

- What needs improvement
 - Proximity
 - Always available
 - Altered daily events

Collaboration

- Important to overall success of response
 - Increases/improves communication
 - Inclusion in process breeds confidence in it
 - Creates transparency/open discussion
 - Clarity of process and methods
 - Disambiguation of facts and “urban myths”
 - Increased knowledge of rehabilitation process
 - Increased local response support capacity

Stakeholders

- What stakeholders are already involved?
 - To what degree are they involved?
- Who is missing from the process?
- What aspects of the response can be improved?
 - Identifying who can assist

Stakeholders

- Responsible party
- Government agencies
 - EPA (Region 5)
 - USFWS
 - USCG
 - USDA (US Department of Agriculture)
 - MDNRE (Michigan Dep. of Natural Resources)
 - Calhoun County Public Health Dept
 - Municipal emergency offices; Sheriff's dept; police force

Stakeholders

- Public/local community (Marshall, Battle Creek)
- Hunting community
- Local (wildlife) organizations
 - Binder Park Zoo, Potter Park Zoo, Detroit Zoo
 - Kellogg Nature Preserve
 - Local wildlife rehabilitators
 - Michigan State University
 - Herpetological clubs

Local Wildlife Organizations

- Species specialists (reptiles)
- Local area knowledge
- Want to help/workforce
- Exchange of ideas, information, methods
- Local capacity building

Framework

- Procedures for work force use established with RP prior to spill
- Workforce Manager for screening, scheduling training, organizing and tracking volunteers
- WFM communication with Animal Care Manager to determine appropriate volunteer placement in response process

Workforce Program

- Basic training
 - Safety, overall response operations
 - Conditions of workforce placement (expectations, training modules, termination)
 - Affiliated workforce vs. convergent workforce

Positive Results

- Increased animal care capacity
- Improved achievable standards
- Decreased staff and workforce workload
- Decreased animal stress
- Understanding of oiled vs. non-oiled wildlife care
- Rapid scaling of response operations
- Local community collaboration

Lessons Learned

- Established working relationship with RP
- Contingency Planning
- Full ICS integration, access (Planning, Ops, UC)
- Logistic Liaison
- RP Liaison on site

Lessons Learned

- Common space
- Frequency of meetings
- Transparency of operations
- 1 800 Report Oiled Wildlife
- The first 24 hours

Thank you!

Contact info:

chris@focuswildlife.org

www.focuswildlife.org

