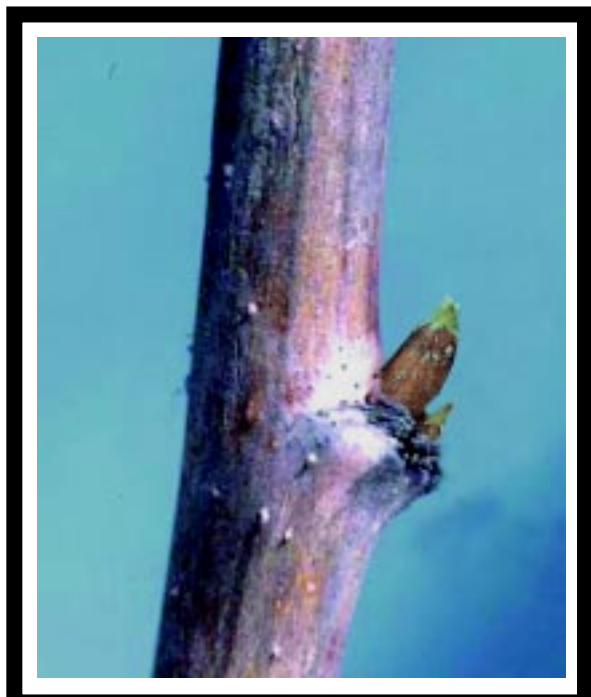


RASPBERRY IPM



Growth Stages



Early Green Tip



Bud Burst



Lateral Development



Flower Bud Separation



Early Bloom



Full Bloom



Ripe Fruit

Leaf Disorders

Bacterial blight (*Pseudomonas* sp.). Wilting and blackening of new shoots and leaves.



Two-spotted spider mite injury.



Leafroller caterpillar usually found in a rolled up leaf. Photo courtesy S. Fitzpatrick, PARC



Yellow rust pustules on leaves.

Adult black vine weevil. Damage to buds and new laterals. ■ Actual size



Boron deficiency. Death of growing point and branching of new shoots.



Early symptoms



Advanced symptoms

Magnesium deficiency. Yellowing between veins of older leaves. Margins stay green.



Spur blight. Leaf infection with brown wedge-shaped centre surrounded by yellow tissue.

Cane Disorders

Botrytis cane wilt on primocanes. Most common from June onward.



Botrytis cane wilt on floricanes. Sporulation of the fungus occurs during wet conditions in the summer.



Anthraxnose of canes. Patches on canes with purplish margins and greyish centres. Canes can become girdled and die.



Spur blight. Infected cane turns silver-grey in winter and produces small, black dots (circled) that contain spores.



Fruit Disorders

Crumbly berry. May be caused by raspberry bushy dwarf virus, poor pollination, nutrient deficiency or genetic problems.



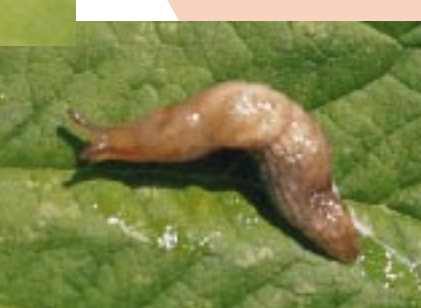
Botrytis fruit rot (spot mould).



Fruit Contaminants



Adult fruitworm. Larva feeds on flowers and burrows inside berry. Photo courtesy of S. Fitzpatrick, PARC ■ Actual size



Slug on leaf.



Leafroller.



Black vine weevil.

Root/Crown Disorders

Phytophthora root rot.



Crown gall on roots.



Crown borer. Larva and damage. ■ Actual size



Native Beneficials

Ladybird beetle—larva. Feeds mainly on aphids. ■ to ■ Actual size



Adult ladybird beetle. Feeds on aphids. Photo courtesy of D. Raworth, PARC ■ Actual size



Predatory mite. Fast moving, feeds on spider mites. Photo courtesy of D. Raworth, PARC



Ground beetle. Feeds on weevil grubs, leatherjackets, and slugs. Photo courtesy of D. Raworth, PARC ■ Actual size



Adult Stethorus. Feeds on mites, appears in July. Photo courtesy of D. Raworth, PARC ■ Actual size



Stethorus larva. Feeds on mites. Photo courtesy of D. Raworth, PARC ■ Actual size



Syrphid larva feeding on an aphid.