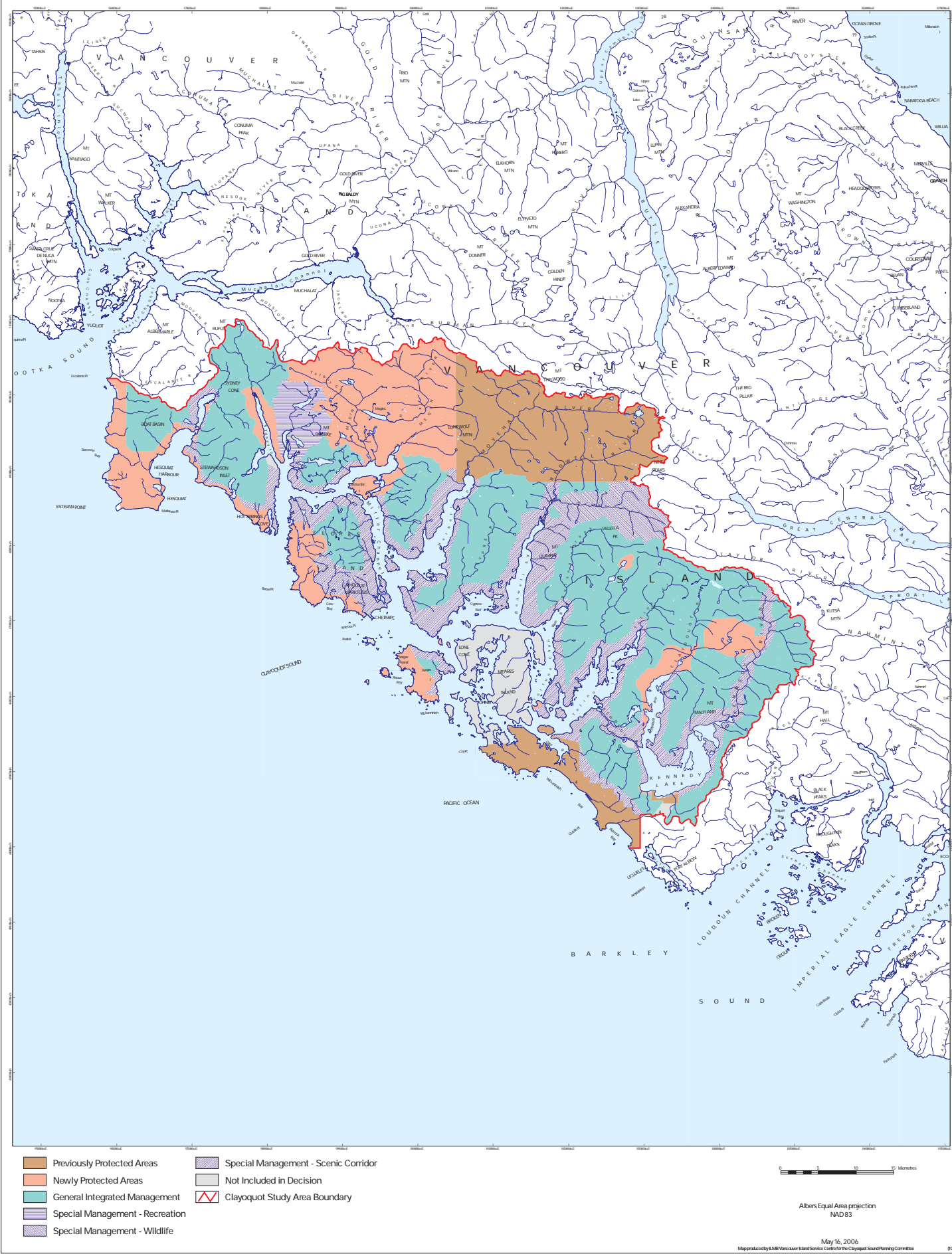


List of Maps

Map 1	Clayoquot Sound Land Use Decision
Map 2	Kennedy Lake Planning Unit – Clayoquot Sound
Map 3	Kennedy Lake Planning Unit – Topographic Relief
Map 4	Kennedy Lake – Biogeoclimatic Ecosystem Classification (BEC)
Map 5	Kennedy Lake – Forest Age Distribution
Map 6	Kennedy Lake – Land Status
Map 7	Kennedy Lake – Hydroriparian Reserves
Map 8	Kennedy Lake – Terrain Stability Reserves
Map 9	Kennedy Lake – Sensitive Soils Reserves
Map 10	Kennedy Lake – Reserves for Red- and Blue-listed Plant Communities
Map 11	Kennedy Lake – Marbled Murrelet Reserves
Map 12	Kennedy Lake – Current Old Forest and Forest-interior Old Forest
Map 13	Kennedy Lake – Forest-interior Old Forest within Reserve Network
Map 14	Kennedy Lake – Reserves added for Ecosystem Representation
Map 15	Kennedy Lake – Tla-o-qui-aht First Nations Culturally Significant Areas
Map 16	Kennedy Lake – Scenic Management Classes
Map 17	Kennedy Lake – Reserves for Recreation/Tourism Values
Map 18	Kennedy Lake – Reserve Network
Map 19	Kennedy Lake – Scenic Management Classes and Reserve Network
Map 20	Kennedy Lake – Reserves and Harvestable Areas
Map 21	Kennedy Lake – Watershed Rate of Cut Limits

Clayoquot Sound Land Use Decision (1993)



Clayoquot Sound



- Clayoquot Sound Study Area
- Planning Unit
- Clayoquot Study Area Boundary

0 5 10 15 Kilometers


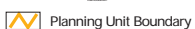




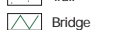
Albers Equal Area projection
NAD83

May 16, 2006

Map produced by ERM Vancouver Island Service Centre for the Clayoquot Sound Planning Committee

Kennedy Lake Planning Unit Topographic Relief



-  TRIM Streams
-  Planning Unit Boundary
-  Paved Road
-  Swamp/Marsh
-  Gravel Road
-  Trail
-  Bridge

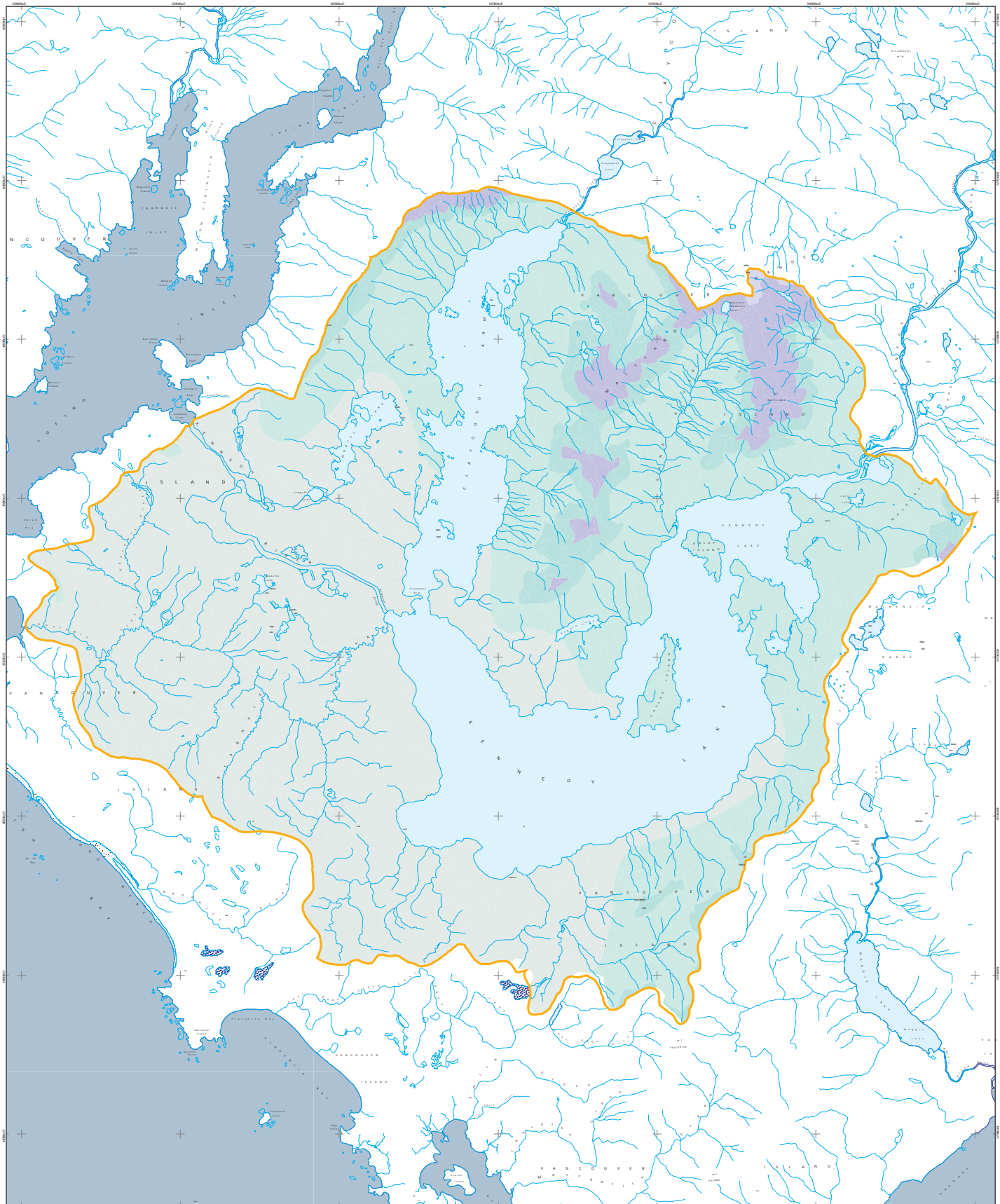
0 1 2 3 4 Kilometers

Albers Equal Area projection
NAD83

May 16, 2006

Map produced by ERM Vancouver Island Service Centre for the Clayoquot Sound Planning Committee

Kennedy Lake Planning Unit Biogeoclimatic Ecosystem Classification (BEC)



- CWHvh1
- CWHvm1
- CWHvm2
- MHmm1
- MHmmp1
- AT
- TRIM streams
- Planning Unit Boundary

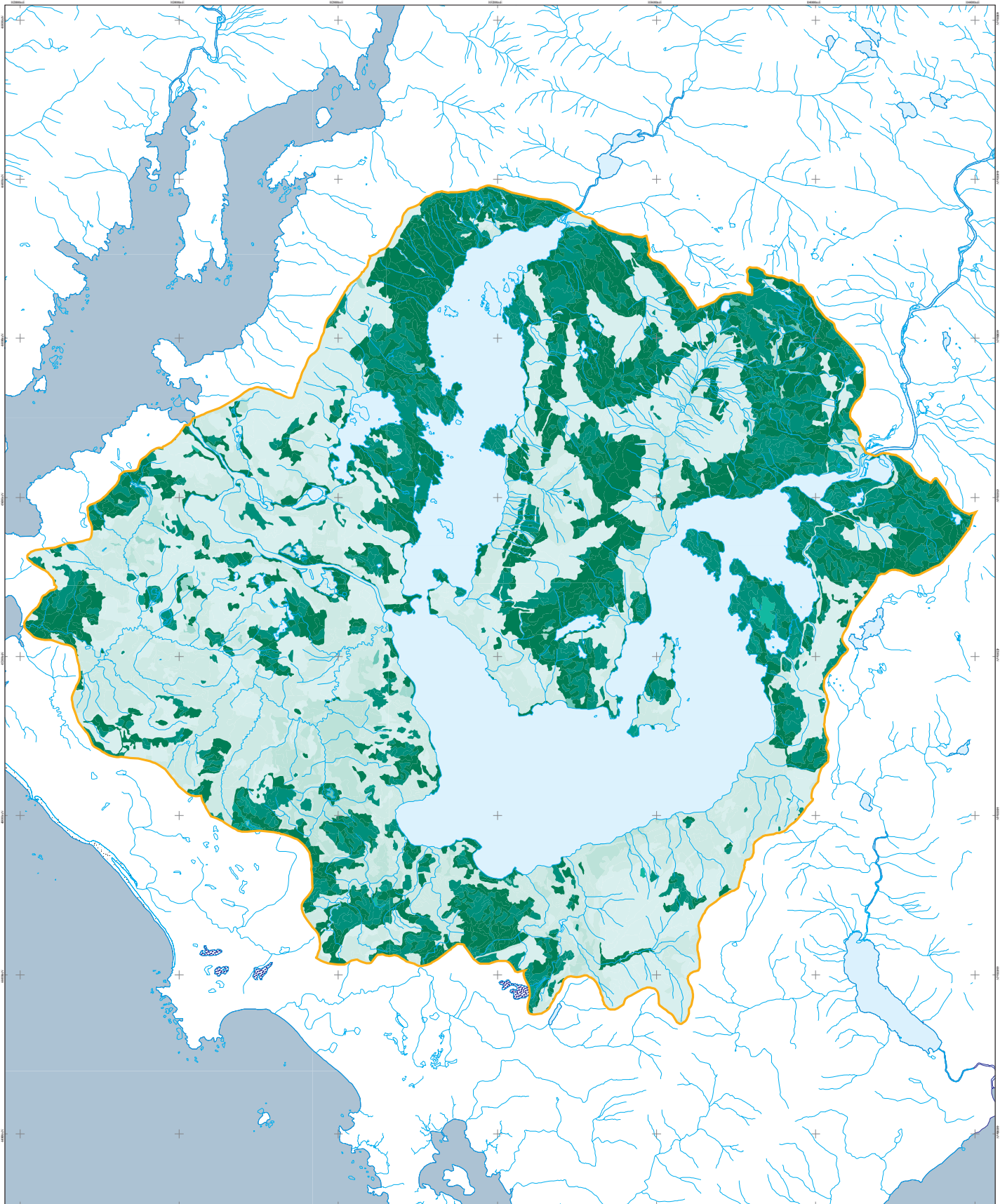
0 1 2 3 4 Kilometers

Albers Equal Area projection
NAD83

May 16, 2006

Map produced by ERM Vancouver Island Service Centre for the Clayoquot Sound Planning Committee

Kennedy Lake Planning Unit Forest Age Distribution

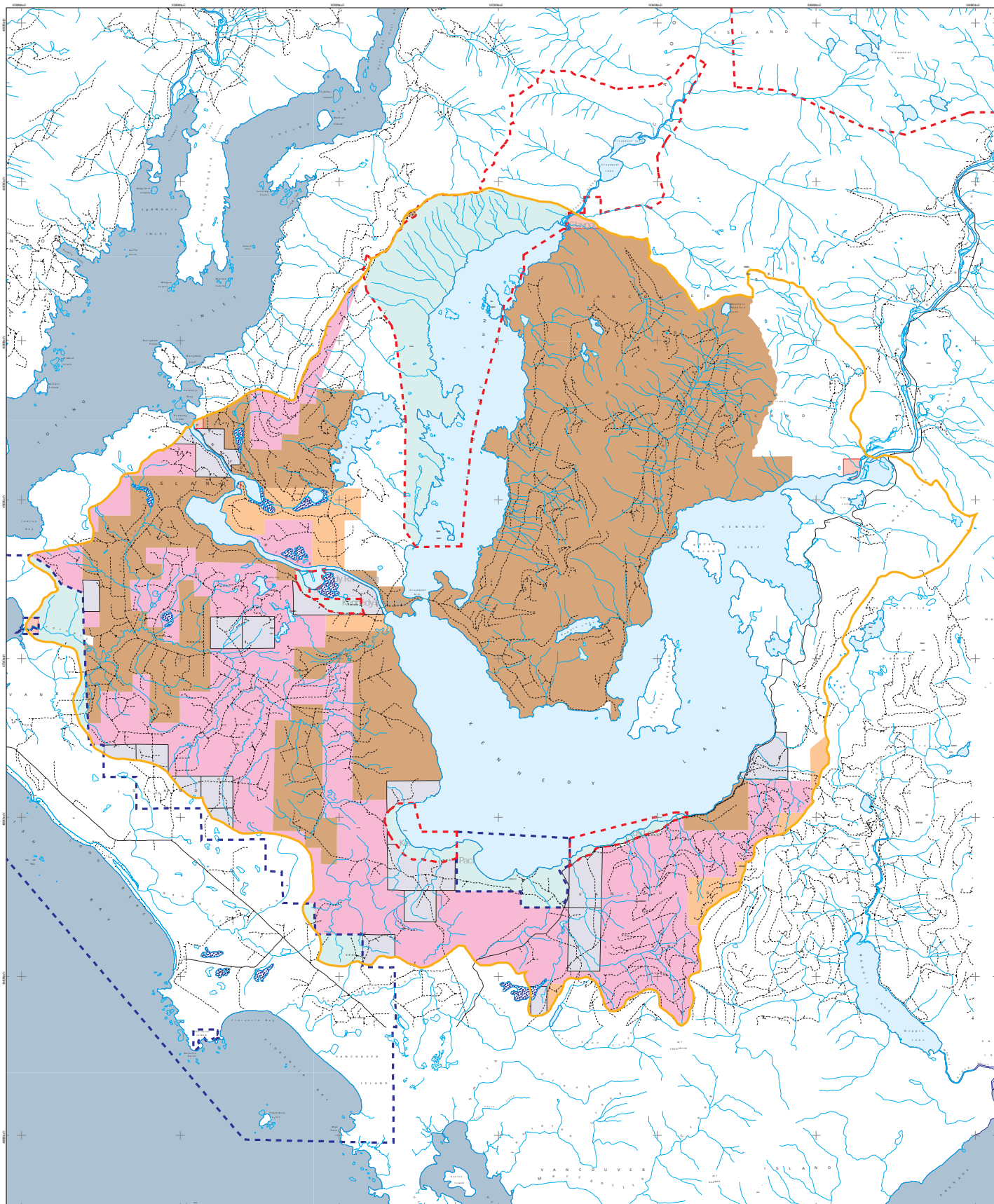


- | | | |
|------------------------------|-------------------------------|------------------------|
| Age Class 1 (1 - 20 years) | Age Class 6 (101 - 120 years) | Planning Unit Boundary |
| Age Class 2 (21 - 40 years) | Age Class 7 (121 - 140 years) | |
| Age Class 3 (41 - 60 years) | Age Class 8 (141 - 250 years) | |
| Age Class 4 (61 - 80 years) | Age Class 9 (251+ years) | |
| Age Class 5 (81 - 100 years) | TRIM streams | |

0 1 2 3 4 Kilometers

Albers Equal Area projection
NAD 83

Kennedy Lake Planning Unit Land Status



- | | |
|-----------------|----------------------|
| TFL 44 Western | Arrowsmith TSA |
| TFL 54 Interior | Private Land |
| TFL 57 Isaak | Indian Reserves |
| Woodlots | Parks |
| Timber Licences | Community Watersheds |

- | | |
|--------------|------------------------|
| Swamp/Marsh | Bridge |
| TRIM streams | Planning Unit Boundary |
| Paved Road | |
| Gravel Road | |
| Trail | |

Data Sources: Parks (Protected Areas)
Indian Reserves
Private Land
Community Watersheds
Woodlots

Land Use Coordination Office
Surveyor General Branch (1995)
Surveyor General Branch (1995)
Ministry of Sustainable Resource Management
Ministry of Forests

Warning: The data depicted on this map was compiled from different sources and base mapping. Boundaries will not align precisely. Indian Reserves and Private Land data was compiled at a scale of 1:250,000. Private land data does not include areas less than 16 hectares in size. Woodlot locations are not exact.

0 1 2 3 4 Kilometers

Albers Equal Area projection
NAD 83

May 16, 2006

Map produced by ERM Vancouver Island Service Centre for the Clayoquot Sound Planning Committee

Kennedy Lake Planning Unit Hydroriparian Reserves



- Hydroriparian reserves
- Wetlands
- Floodplains
- Swamp/Marsh
- TRIM streams
- Planning Unit Boundary

0 1 2 3 4 Kilometres

Albers Equal Area projection
NAD83

May 16, 2006

Map produced by ERM Vancouver Island Service Centre for the Clayoquot Sound Planning Committee

Kennedy Lake Planning Unit Reserves for Terrain Stability



- | | |
|---|--|
| Terrain Stability Reserves | Trail |
| Swamp/Marsh | <div style="position: absolute; top: 50%; left: 50%; transform: translate(-50%, -50%); border-left: 2px solid black; border-right: 2px solid black;"></div> Bridge |
| TRIM streams | Planning Unit Boundary |
| <div style="position: absolute; top: 50%; left: 50%; transform: translate(-50%, -50%); border-left: 2px solid black; border-right: 2px solid black;"></div> Paved Road | |
| <div style="position: absolute; top: 50%; left: 50%; transform: translate(-50%, -50%); border-left: 2px dashed black; border-right: 2px dashed black;"></div> Gravel Road | |

0 1 2 3 4 Kilometres

Albers Equal Area projection
NAD83

May 16, 2006

Map produced by EMB Vancouver Island Service Centre for the Clayoquot Sound Planning Committee

Inventory Done in Accordance with RIC Standards

Terrain Inventory 1996-1998 Madrona Consultants

Kennedy Lake Planning Unit Reserves for Sensitive Soils



- | | |
|--|------------------------|
| Bedrock Terrain | Poor Growing Site |
| Shallow Organic Materials | Swamp/Marsh |
| Organic Soil | TRIM streams |
| Blocky and Bouldery Colluvial Material | Planning Unit Boundary |
| Active Colluvial Cones or Fans and Alluvial Fans | |

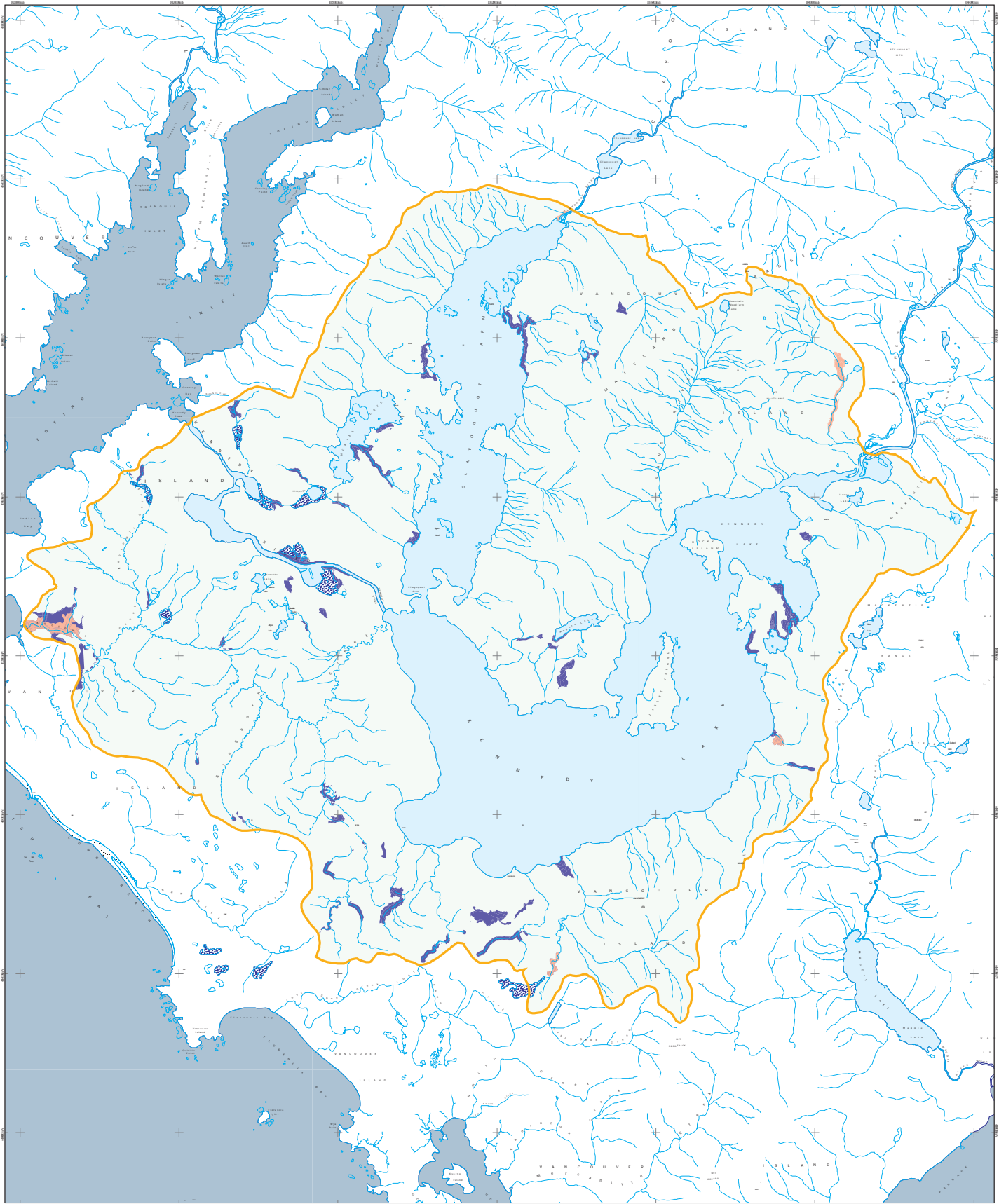
0 1 2 3 4 Kilometres

Albers Equal Area projection
NAD83

May 16, 2006

Map produced by ERM Vancouver Island Services Centre for the Clayoquot Sound Planning Committee

Kennedy Lake Planning Unit Reserves for Red- and Blue-listed Plant Communities



- Red-listed plant community reserves
- Blue-listed plant community reserves
- Swamp/Marsh
- TRIM streams
- Planning Unit Boundary

0 1 2 3 4 Kilometers

Albers Equal Area projection
NAD 83

May 16, 2006

Map produced by ERM Vancouver Island Service Centre for the Clayoquot Sound Planning Committee

Inventory Done in Accordance with RIC Standards

Terracal Ecosystem Mapping (TEM) 1996-1998 Madrone Consultants Ltd.

Kennedy Lake Planning Unit Reserves for Marbled Murrelets



Kennedy Lake Planning Unit Current Old Growth and Interior Old Growth Forest



- Old Growth Forest (age class 8 and 9)
- Interior Old Growth Forest
- Swamp/Marsh
- TRIM streams
- Planning Unit Boundary

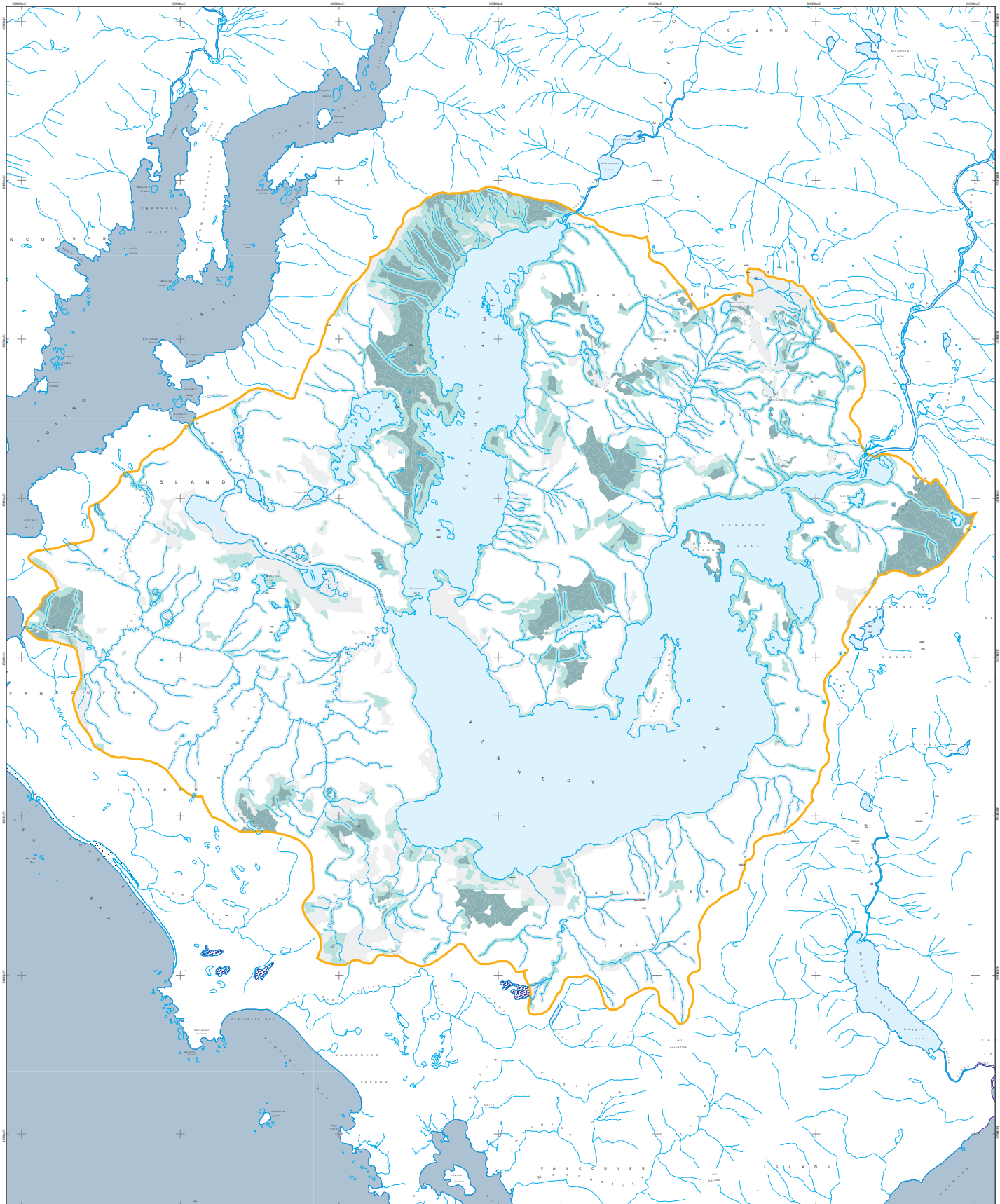
0 1 2 3 4 Kilometers

Albers Equal Area projection
NAD83

May 16, 2006

Map produced by ERM Vancouver Island Service Centre for the Clayoquot Sound Planning Committee

Kennedy Lake Planning Unit Old Growth and Interior Old Growth in Reserve Network



- Old Growth Forest in Reserve Network
- Interior Old Growth Forest in Reserve Network
- Reserve Network
- Swamp/Marsh
- TRIM streams
- Planning Unit Boundary

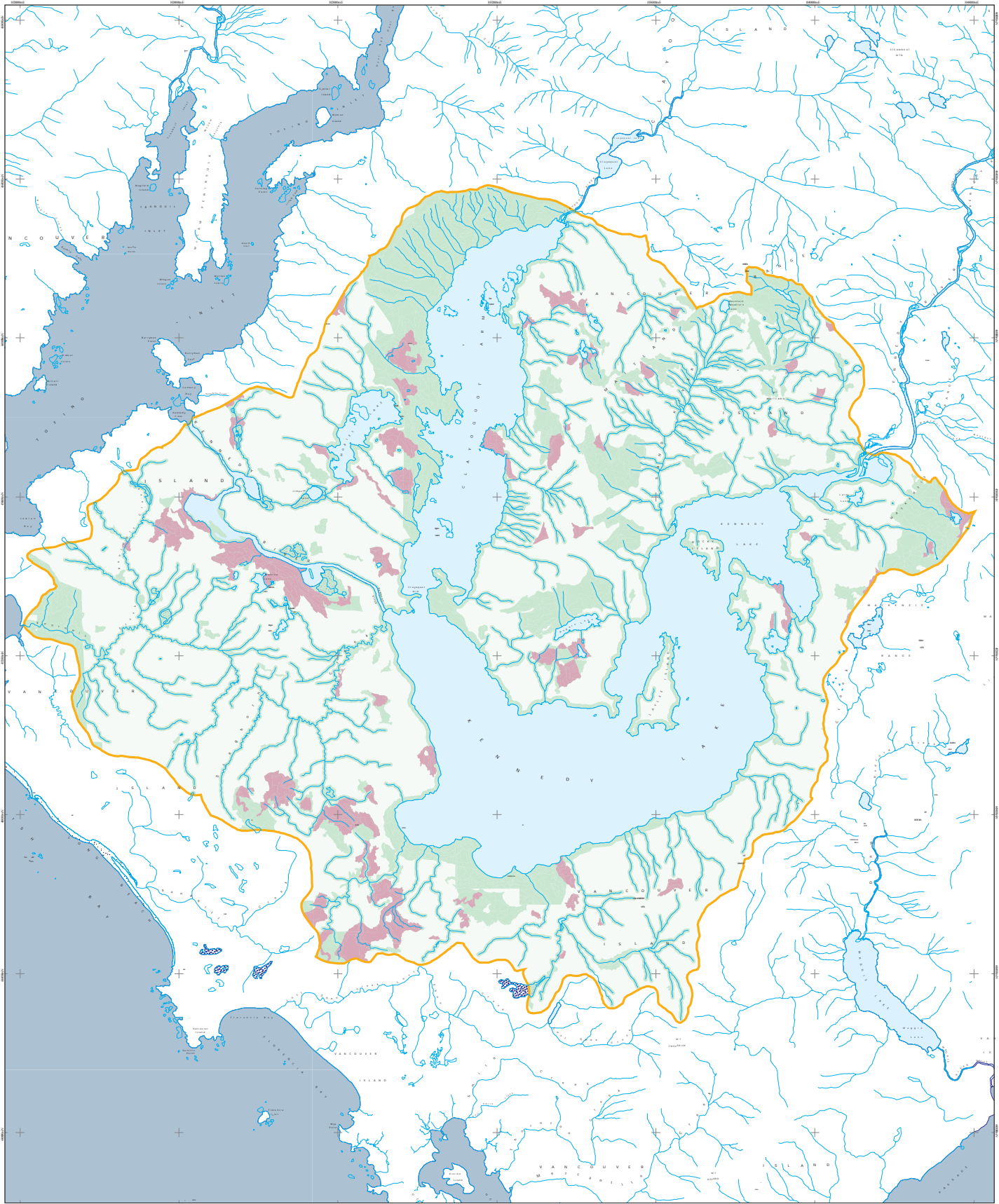
0 1 2 3 4 Kilometers

Albers Equal Area projection
NAD83

May 16, 2006

Map produced by ERM Vancouver Island Service Centre for the Clayoquot Sound Planning Committee

Kennedy Lake Planning Unit Reserves added for Ecosystem Representation

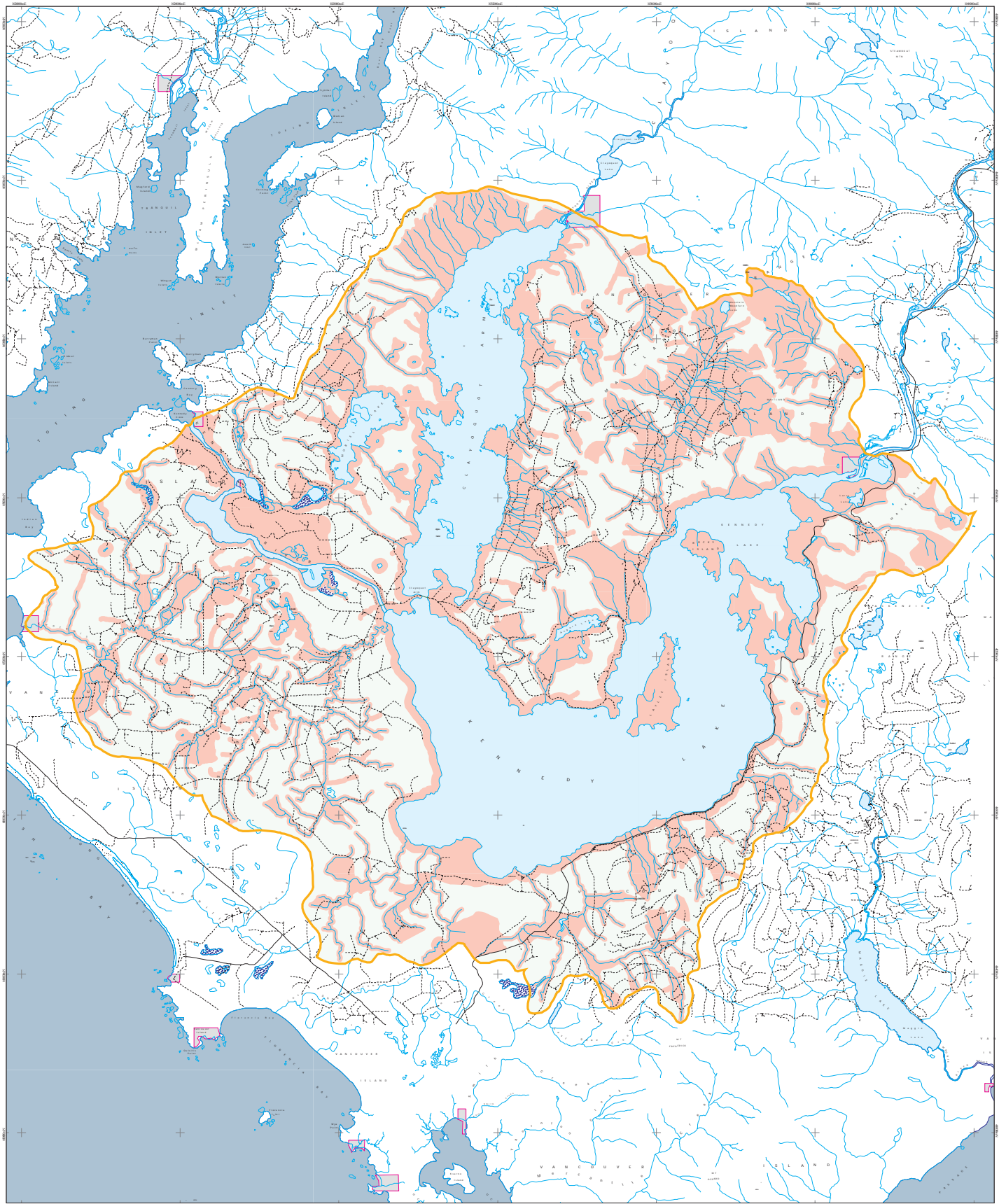


- Reserves to Complete Ecosystem Representation
- Reserves for Representative Ecosystems from Other Reserve Criteria
- TRIM streams
- Planning Unit Boundary

0 1 2 3 4 Kilometers

Albers Equal Area projection
NAD83

Kennedy Lake Planning Unit Culturally Significant Areas - Tla-o-qui-aht First Nation



- | | | | |
|--|------------------------------|--|------------------------|
| | Culturally Significant Areas | | Trail |
| | Indian Reserves | | Bridge |
| | TRIM Streams | | Planning Unit Boundary |
| | Paved Road | | |
| | Gravel Road | | |

0 1 2 3 4 Kilometers

Albers Equal Area projection
NAD83

May 16, 2006

Map produced by ERM Vancouver Island Service Centre for the Clayoquot Sound Planning Committee

Kennedy Lake Planning Unit Culturally Significant Areas - Ucluelet First Nation

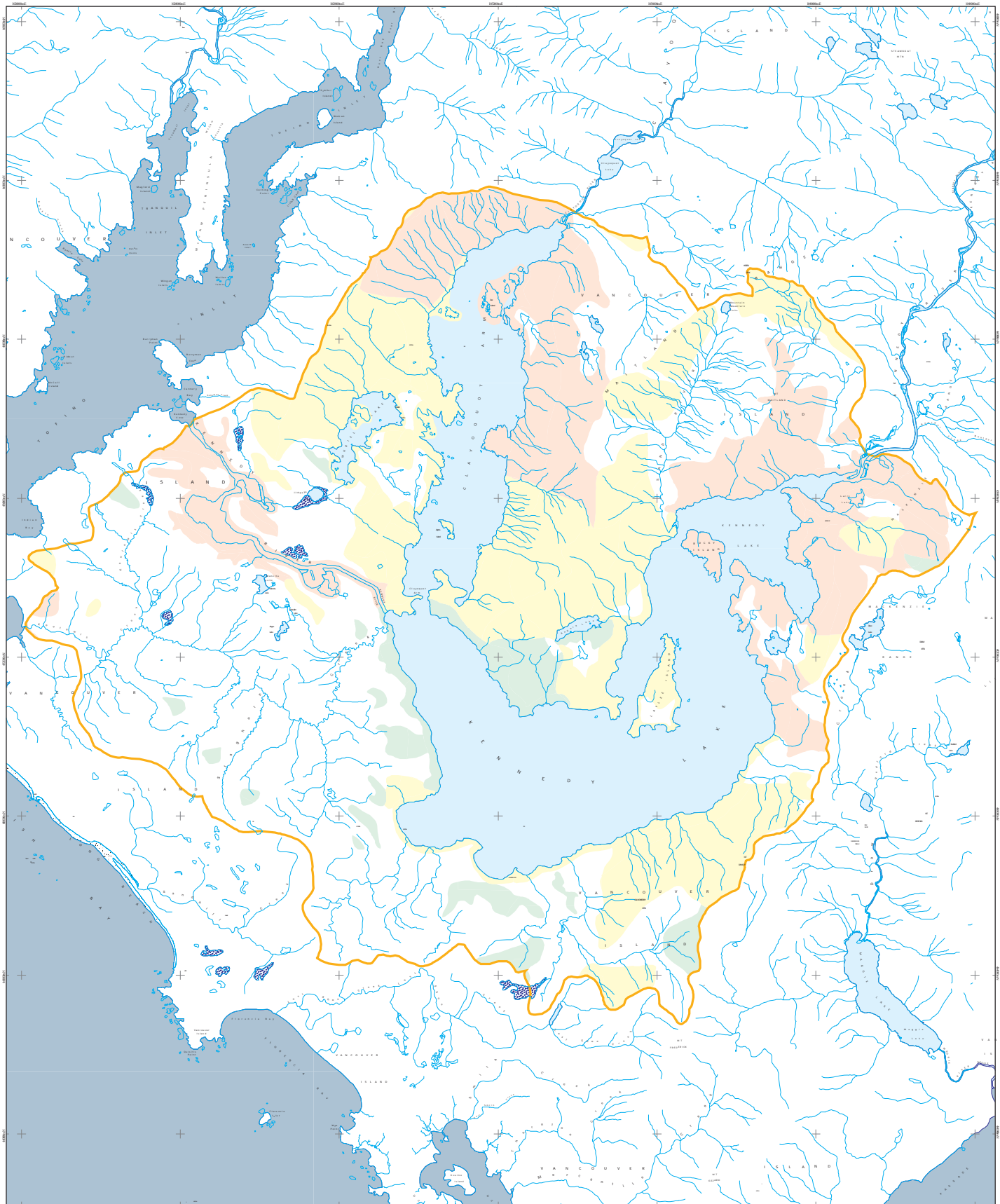


- | | |
|--|--|
| Culturally Significant Areas | Trail |
| Indian Reserves | <div style="position: absolute; top: -5px; left: 5px; width: 0; height: 0; border-left: 5px solid transparent; border-right: 5px solid transparent; border-bottom: 8px solid black;"></div> Bridge |
| TRIM Streams | Planning Unit Boundary |
| Paved Road | |
| Gravel Road | |

0 1 2 3 4 Kilometers

Albers Equal Area projection
NAD83

Kennedy Lake Planning Unit Scenic Class Objectives



- Small-scale Alteration
- Minimal Alteration
- Natural Appearing
- TRIM streams
- Planning Unit Boundary

0 1 2 3 4 Kilometers

Albers Equal Area projection
NAD83

May 16, 2006

Map produced by ERM Vancouver Island Service Centre for the Clayoquot Sound Planning Committee

Kennedy Lake Planning Unit Reserves for Recreation/Tourism Values



- | | |
|--------------------------|------------------------|
| Reserve | Paved Road |
| Management Zone | Gravel Road |
| Existing Reserve Network | Trail |
| Recreation Polygons | Bridge |
| TRIM streams | Planning Unit Boundary |

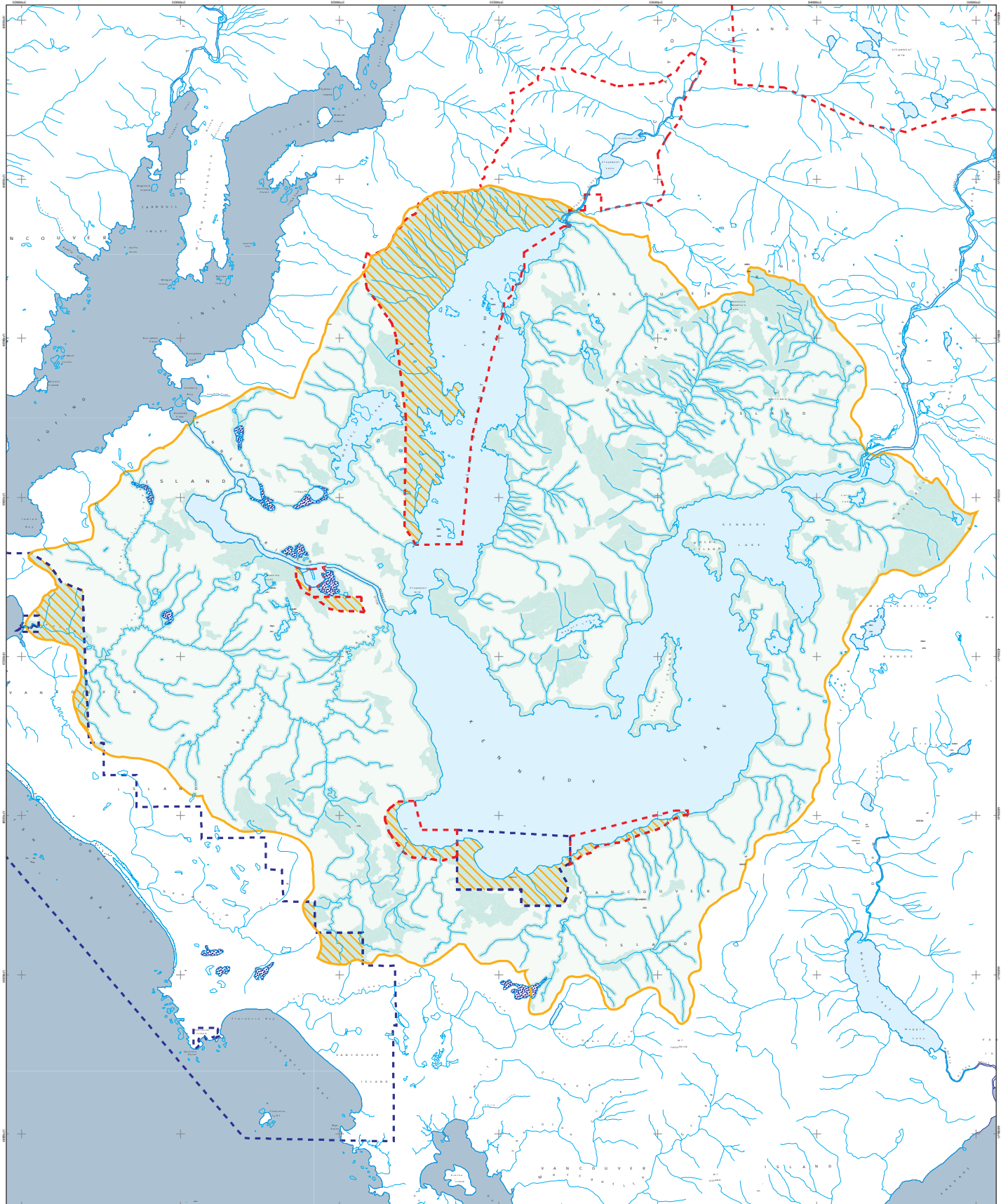
0 1 2 3 4 Kilometres

Albers Equal Area projection
NAD 83

May 16, 2006

Map produced by ERM Vancouver Island Service Centre for the Clayoquot Sound Planning Committee

Kennedy Lake Planning Unit Reserve Network



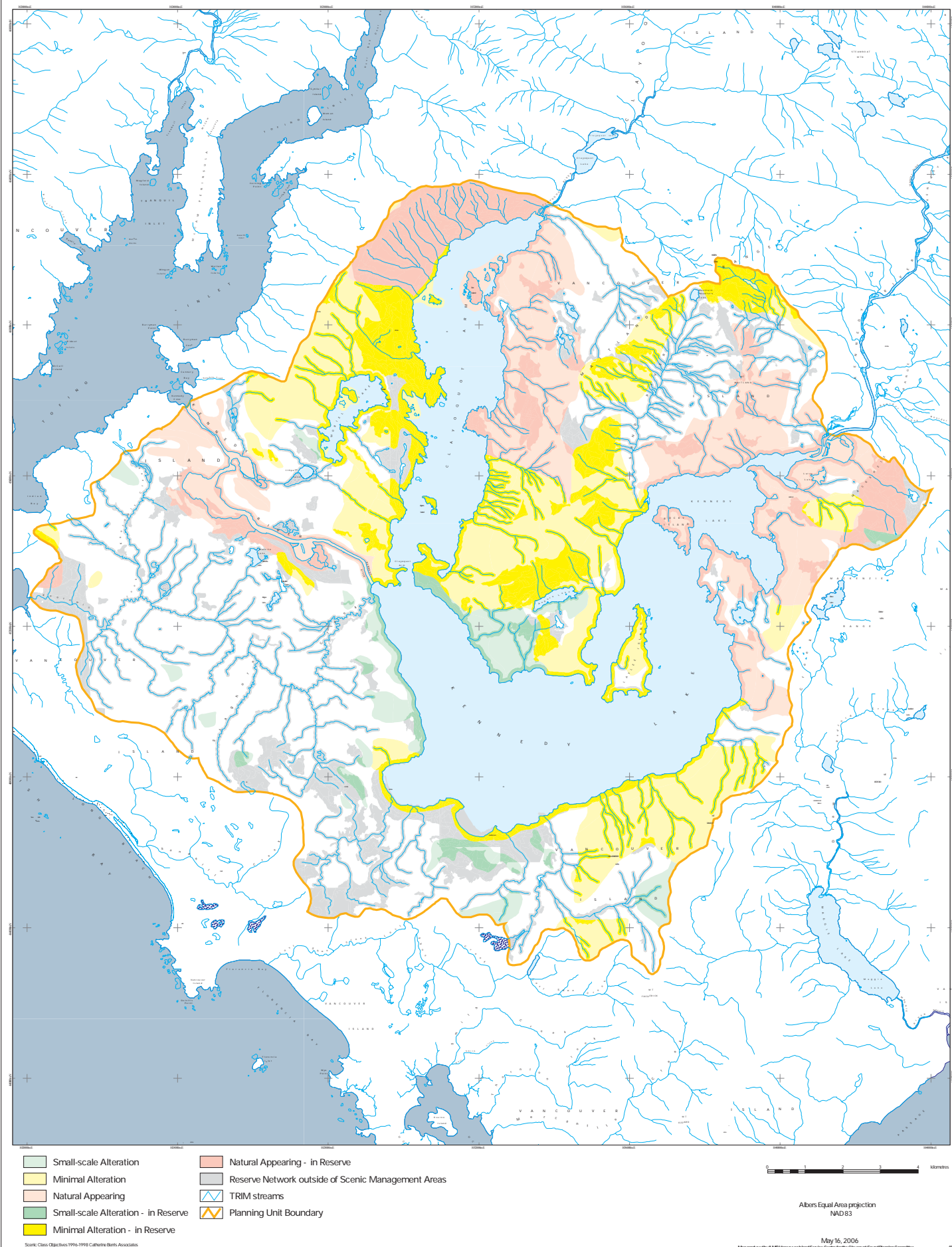
- Reserve Polygons
- Protected Areas
- TRIM streams
- Planning Unit Boundary

Note: Reserves established as per Clayquot Sound Scientific Panel Recommendations (See Recommendation R7.16 of Report 5)

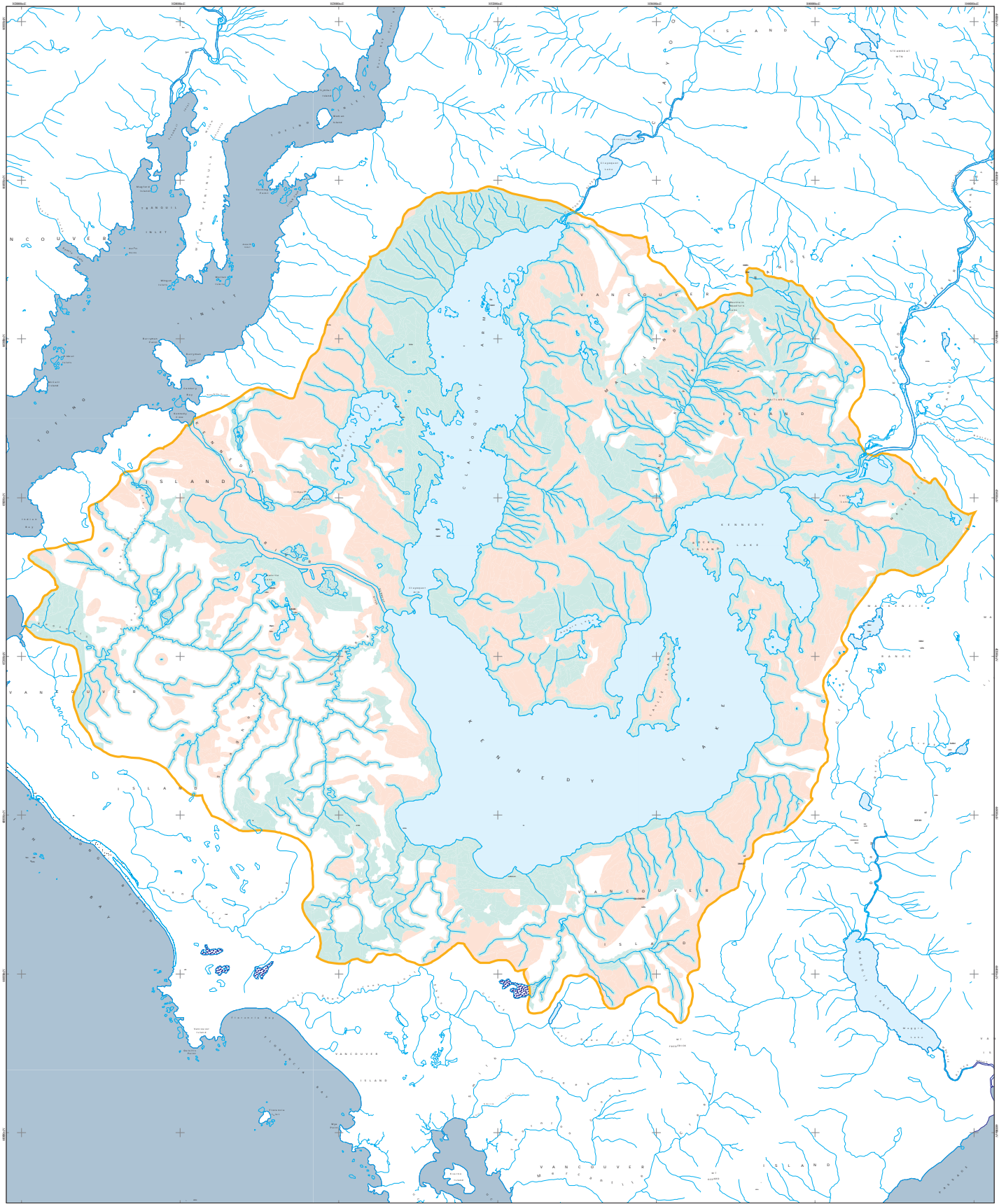
0 1 2 3 4 Kilometers

Albers Equal Area projection
NAD83

Kennedy Lake Planning Unit Scenic Class Objectives and Reserve Network



Kennedy Lake Planning Unit Reserves and Harvestable Areas, including Special Management Zones



- Reserve Polygons
- Special Management Zones within Harvestable Areas
- Harvestable Areas
- TRIM streams
- Planning Unit Boundary

0 1 2 3 4 Kilometers

Albers Equal Area projection
NAD83

