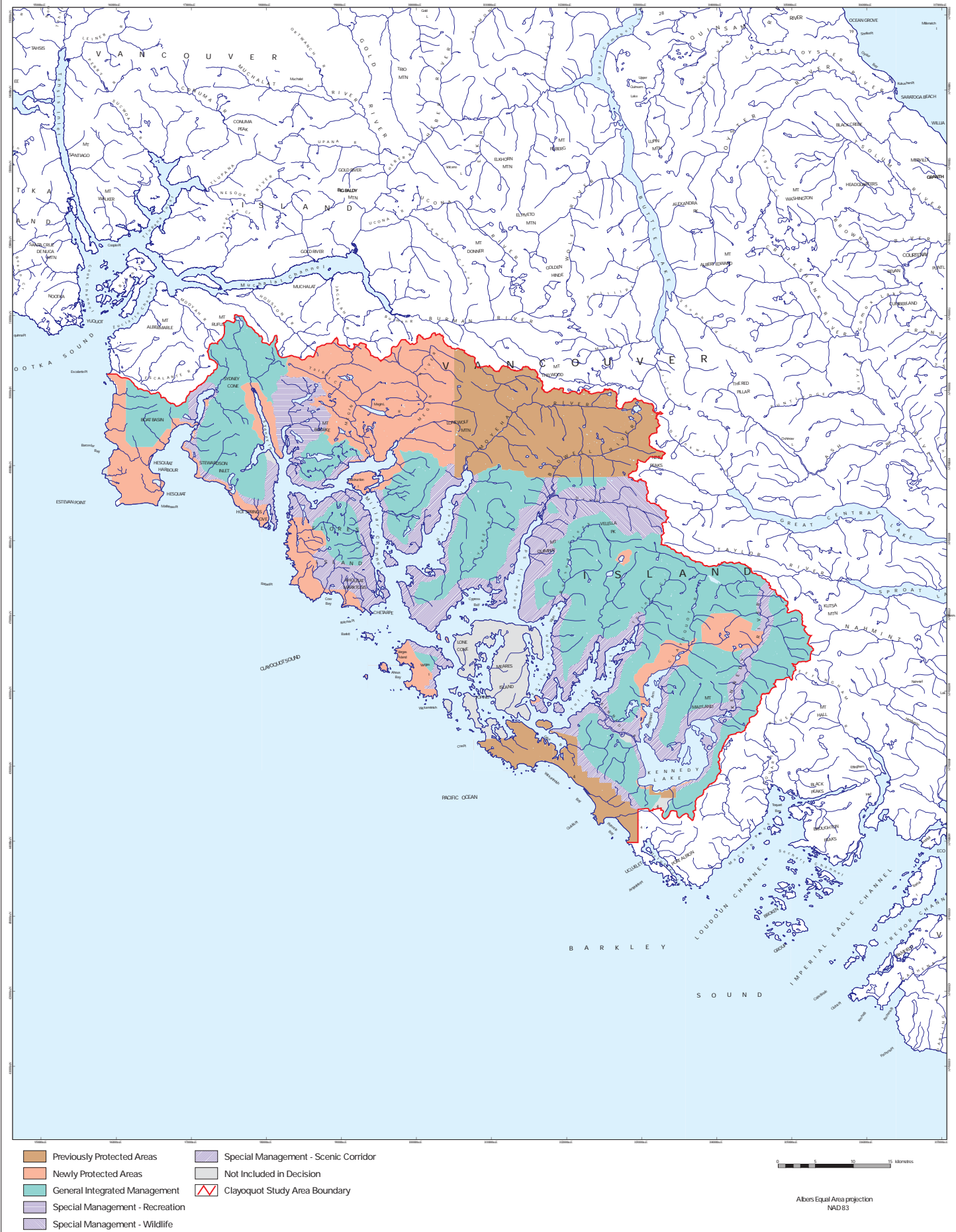


## List of Maps

Map 1	Clayoquot Sound Land Use Decision
Map 2	Hesquiaht Planning Unit – Clayoquot Sound
Map 3	Hesquiaht Planning Unit – Topographic Relief
Map 4	Hesquiaht – Biogeoclimatic Ecosystem Classification (BEC)
Map 5	Hesquiaht – Forest Age Distribution
Map 6	Hesquiaht – Land Status
Map 7	Hesquiaht – Hydriparian Reserves
Map 8	Hesquiaht – Terrain Stability Reserves
Map 9	Hesquiaht – Sensitive Soils Reserves
Map 10	Hesquiaht – Reserves for Red- and Blue-listed Plant Communities
Map 11	Hesquiaht – Marbled Murrelet Reserves
Map 12	Hesquiaht – Current Old Forest and Forest-interior Old Forest
Map 13	Hesquiaht – Forest-interior Old Forest within Reserve Network
Map 14	Hesquiaht – Reserves added for Ecosystem Representation
Map 15(HFN)	Hesquiaht First Nations Culturally Significant Areas
Map 15(AFN)	Ahousaht First Nations Culturally Significant Areas
Map 16	Hesquiaht – Scenic Management Classes
Map 17	Hesquiaht – Reserves for Recreation/Tourism Values
Map 18	Hesquiaht – Reserve Network
Map 19	Hesquiaht – Scenic Management Classes and Reserve Network
Map 20	Hesquiaht – Reserves and Harvestable Areas
Map 21	Hesquiaht – Watershed Rate of Cut Limits

# Clayoquot Sound Land Use Decision (1993)



# Clayoquot Sound



- Clayoquot Sound Study Area
- Planning Unit
- Clayoquot Study Area Boundary

0 5 10 15 Kilometers

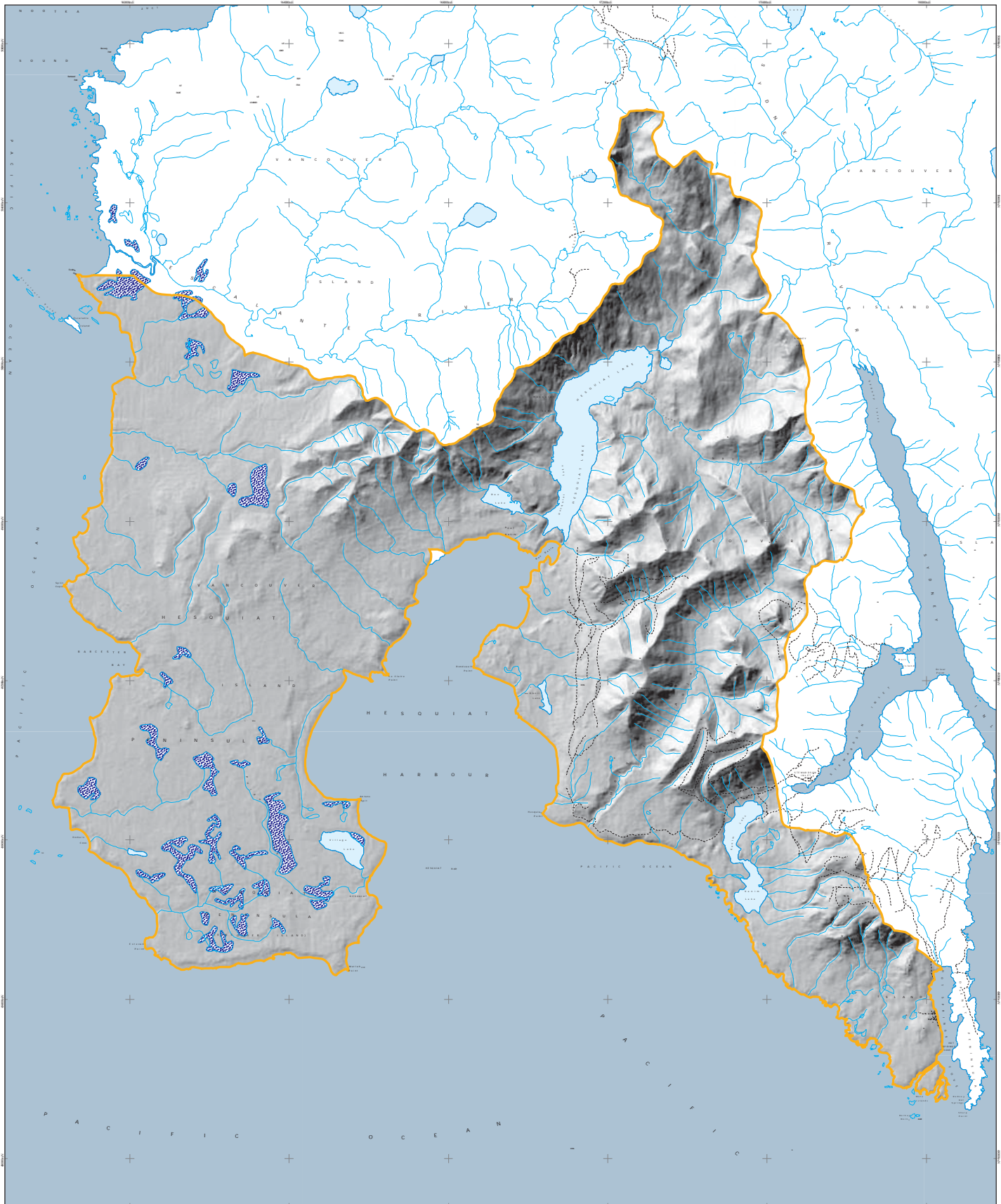
Albers Equal Area projection  
NAD83

May 16, 2006

Map produced by ERM Vancouver Island Service Centre for the Clayoquot Sound Planning Committee



# Hesquiaht Planning Unit Topographic Relief



- TRIM Streams
- Planning Unit Boundary
- Paved Road
- Swamp/Marsh
- Gravel Road
- Trail
- Bridge

0 1 2 3 4 Kilometres

Albers Equal Area projection  
NAD83



# Hesquiaht Planning Unit Biogeoclimatic Ecosystem Classification (BEC)



- CWHvh1
- CWHvm1
- CWHvm2
- MHmm1
- MHmmpl
- AT
- TRIM streams
- Planning Unit Boundary

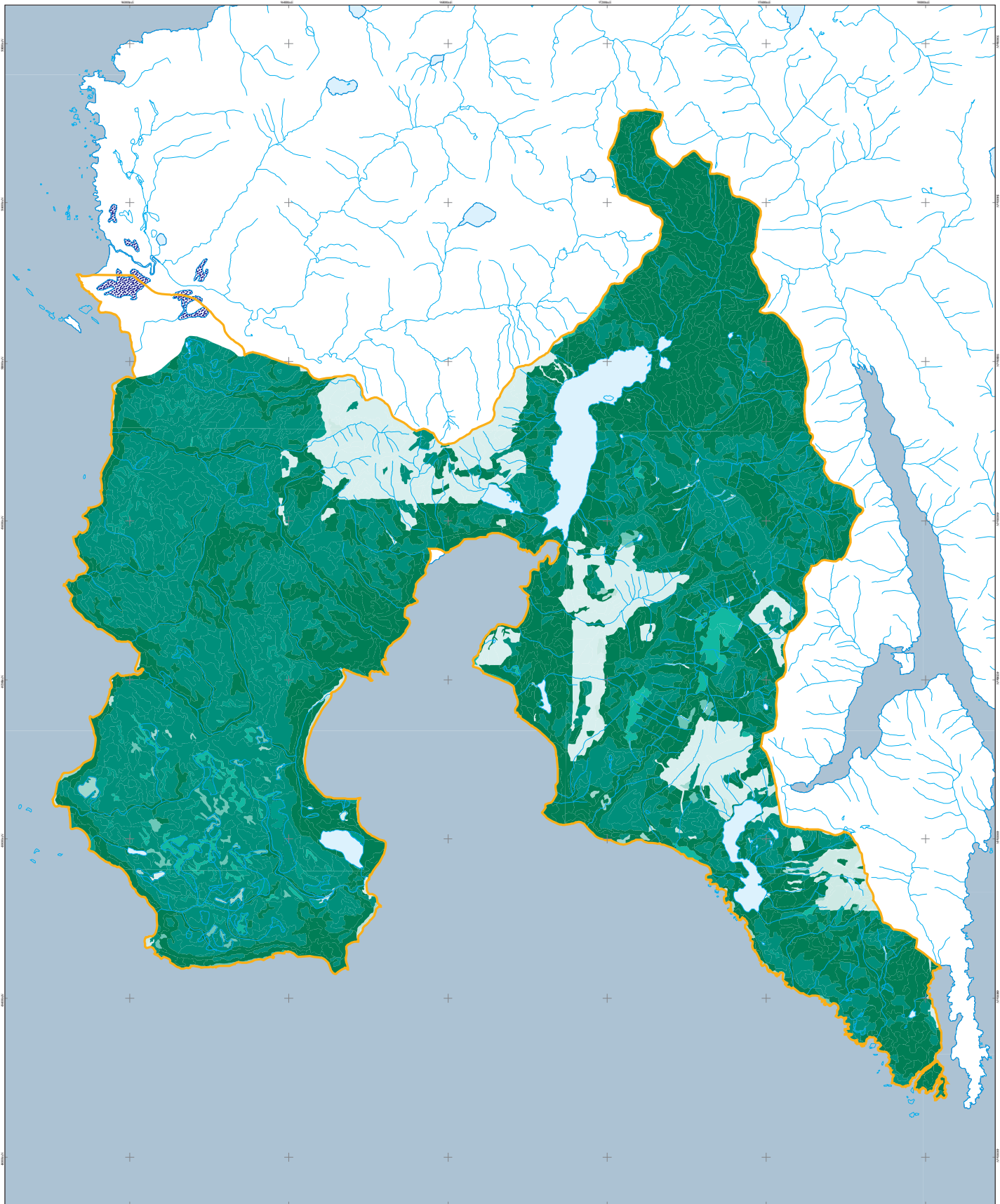
0 1 2 3 4 Kilometres

Albers Equal Area projection  
NAD83

May 16, 2006

Map produced by ERM Vancouver Island Service Centre for the Clayoquot Sound Planning Committee

# Hesquiaht Planning Unit Forest Age Distribution

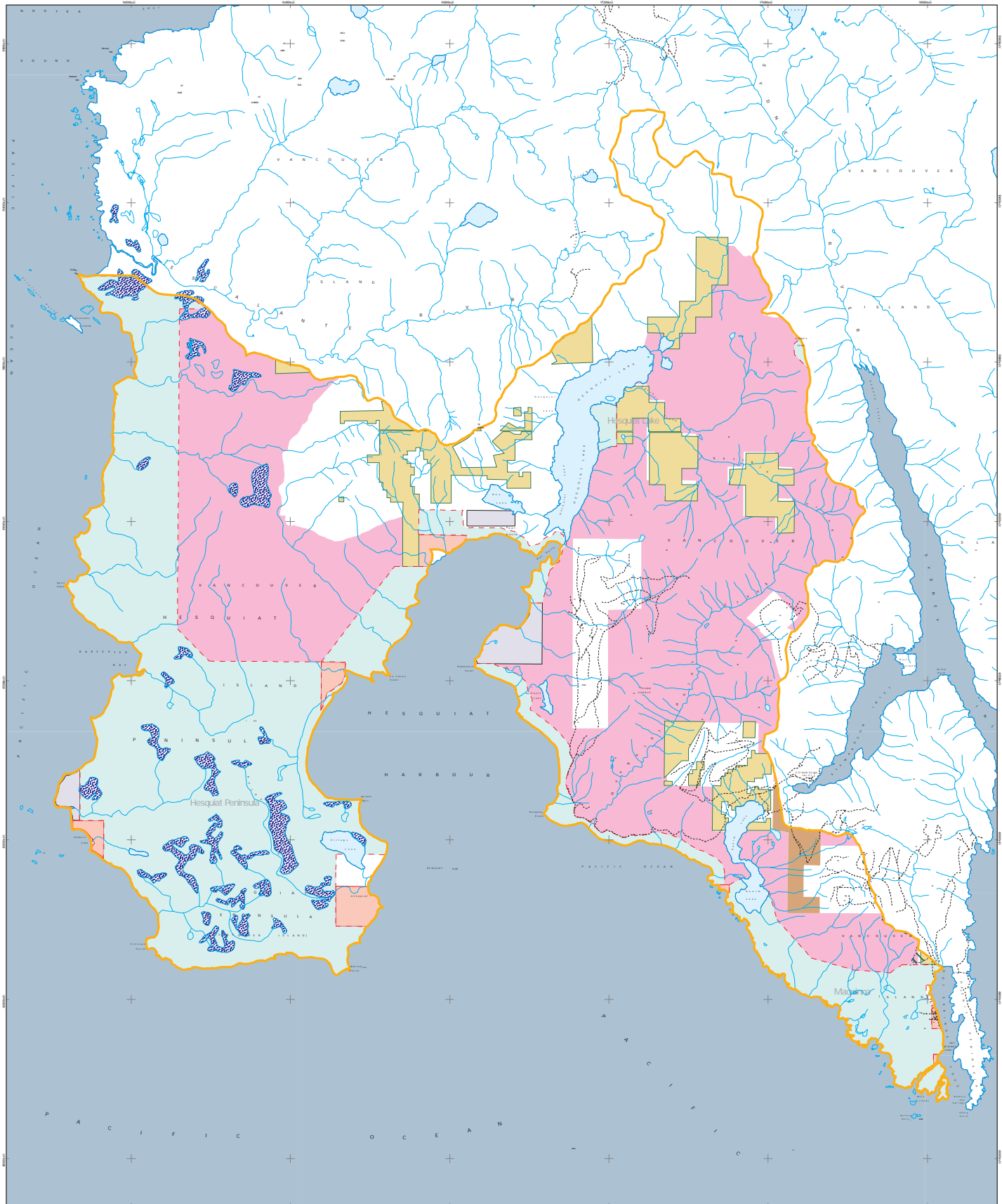


- |                              |                               |                        |
|------------------------------|-------------------------------|------------------------|
| Age Class 1 (1 - 20 years)   | Age Class 6 (101 - 120 years) | Planning Unit Boundary |
| Age Class 2 (21 - 40 years)  | Age Class 7 (121 - 140 years) |                        |
| Age Class 3 (41 - 60 years)  | Age Class 8 (141 - 250 years) |                        |
| Age Class 4 (61 - 80 years)  | Age Class 9 (251+ years)      |                        |
| Age Class 5 (81 - 100 years) | TRIM streams                  |                        |

0 1 2 3 4 Kilometers

Albers Equal Area projection  
NAD 83

# Hesquiaht Planning Unit Land Status



- |                 |                      |              |                        |
|-----------------|----------------------|--------------|------------------------|
| TFL 44 Western  | Arrowsmith TSA       | Swamp/Marsh  | Bridge                 |
| TFL 54 Interior | Private Land         | TRIM streams | Planning Unit Boundary |
| TFL 57 Isaak    | Indian Reserves      | Paved Road   |                        |
| Woodlots        | Parks                | Gravel Road  |                        |
| Timber Licences | Community Watersheds | Trail        |                        |

Data Sources: Parks (Protected Areas)  
Indian Reserves  
Private Land  
Community Watersheds  
Woodlots  
Land Use Coordination Office  
Surveyor General Branch (1995)  
Surveyor General Branch (1995)  
Ministry of Sustainable Resource Management  
Ministry of Forests

Warning: The data depicted on this map was compiled from different sources and base mapping. Boundaries will not align precisely. Indian Reserves and Private Land data was compiled at a scale of 1:250,000. Private land data does not include areas less than 16 hectares in size. Woodlot locations are not exact.

0 1 2 3 4 Kilometers

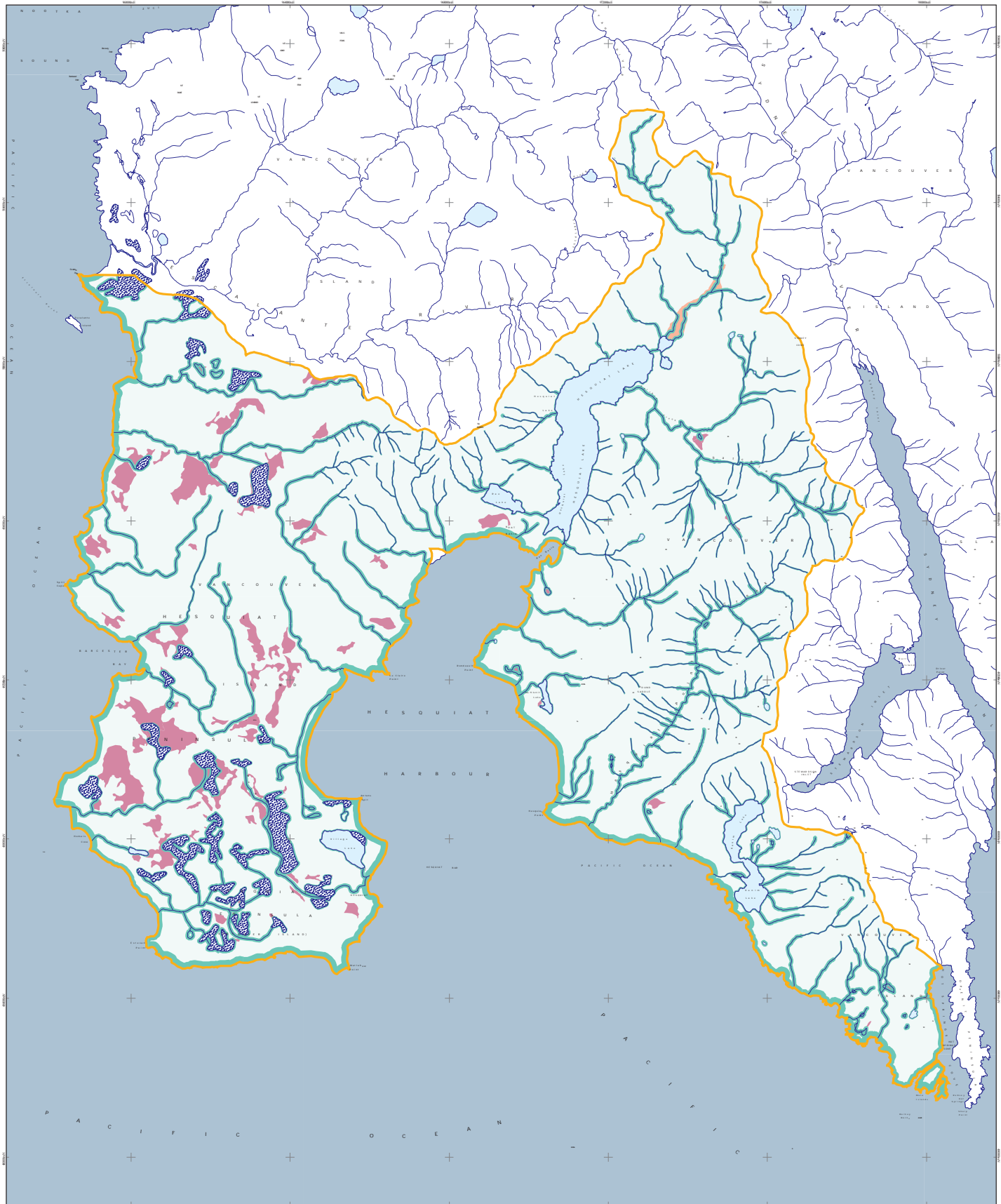
Albers Equal Area projection  
NAD 83

May 16, 2006

Map produced by ERM Vancouver Island Service Centre for the Clayoquot Sound Planning Committee



# Hesquiaht Planning Unit Hydroriparian Reserves



- Hydroriparian reserves
- Wetlands
- Floodplains
- Swamp/Marsh
- TRIM streams
- Planning Unit Boundary

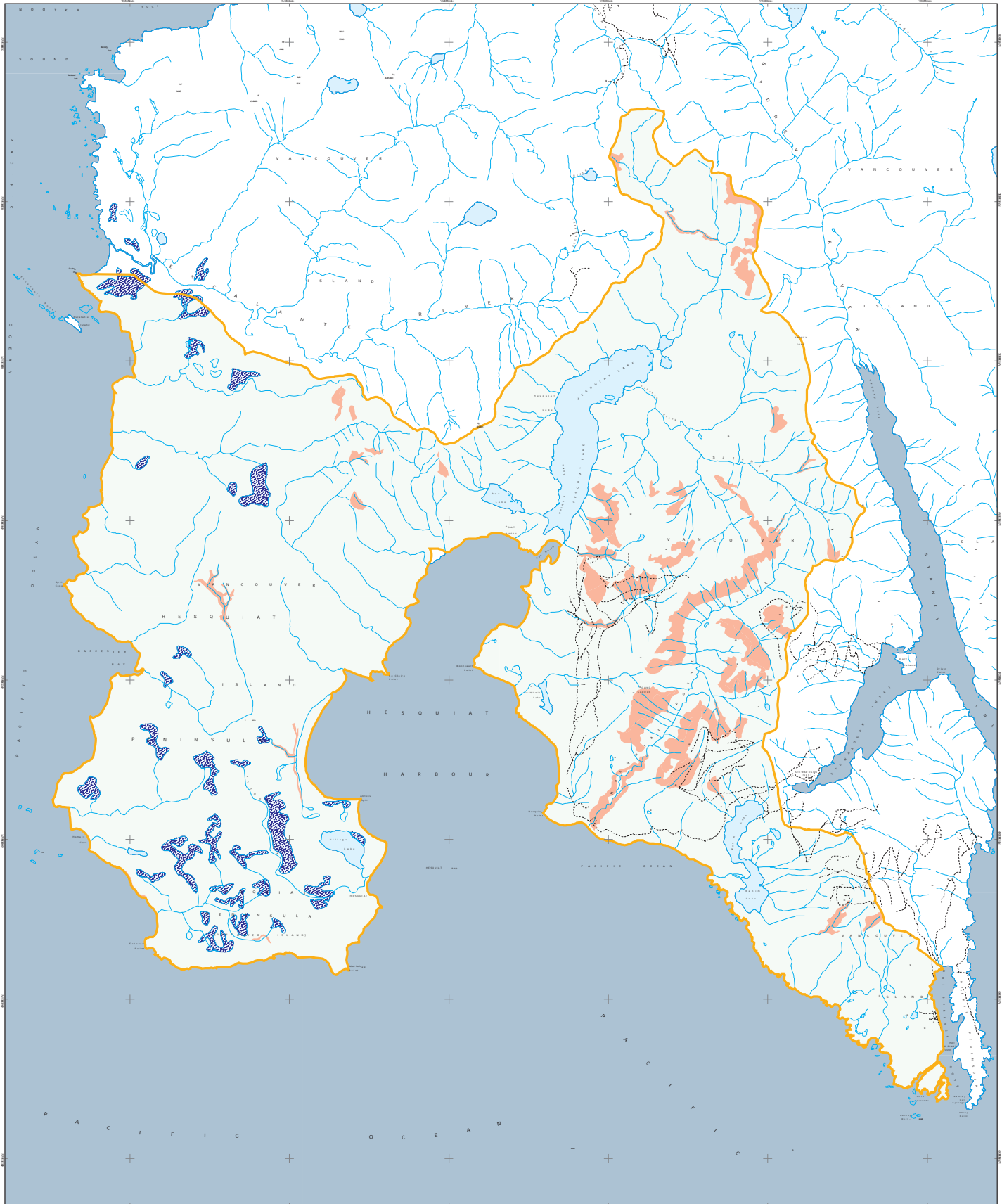
0 1 2 3 4 Kilometers

Albers Equal Area projection  
NAD83

May 16, 2006

Map produced by ERM Vancouver Island Service Centre for the Clayoquot Sound Planning Committee

# Hesquiaht Planning Unit Reserves for Terrain Stability



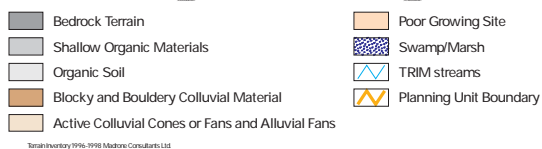
- Terrain Stability Reserves
- Swamp/Marsh
- TRIM streams
- Paved Road
- Gravel Road
- Trail
- Bridge
- Planning Unit Boundary

0 1 2 3 4 Kilometres

Albers Equal Area projection  
NAD83

May 16, 2006

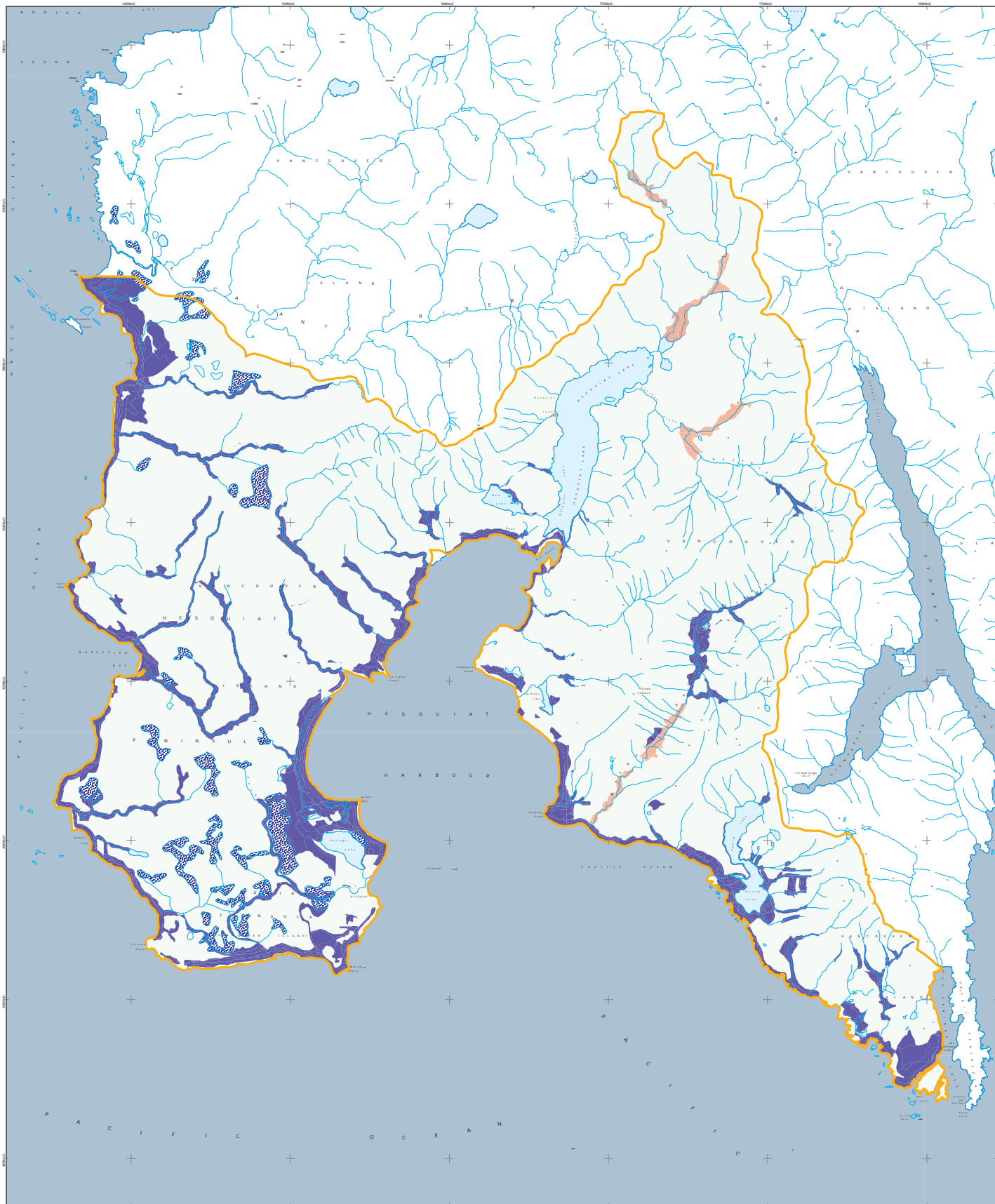
Map produced by ERM Vancouver Island Service Centre for the Clayoquot Sound Planning Committee



May 16, 2006  
Map produced by ILNB Vancouver Island Service Centre for the Clayoquot Sound Planning Committee



# Hesquiaht Planning Unit Reserves for Red- and Blue-listed Plant Communities



- Red-listed plant community reserves
- Blue-listed plant community reserves
- Swamp/Marsh
- TRIM streams
- Planning Unit Boundary

0 1 2 3 4 Kilometres

Albers Equal Area projection  
NAD83

May 16, 2006

Map produced by ERM Vancouver Island Service Centre for the Clayoquot Sound Planning Committee

Inventory Done in Accordance with RIC Standards

# Hesquiaht Planning Unit Reserves for Marbled Murrelets

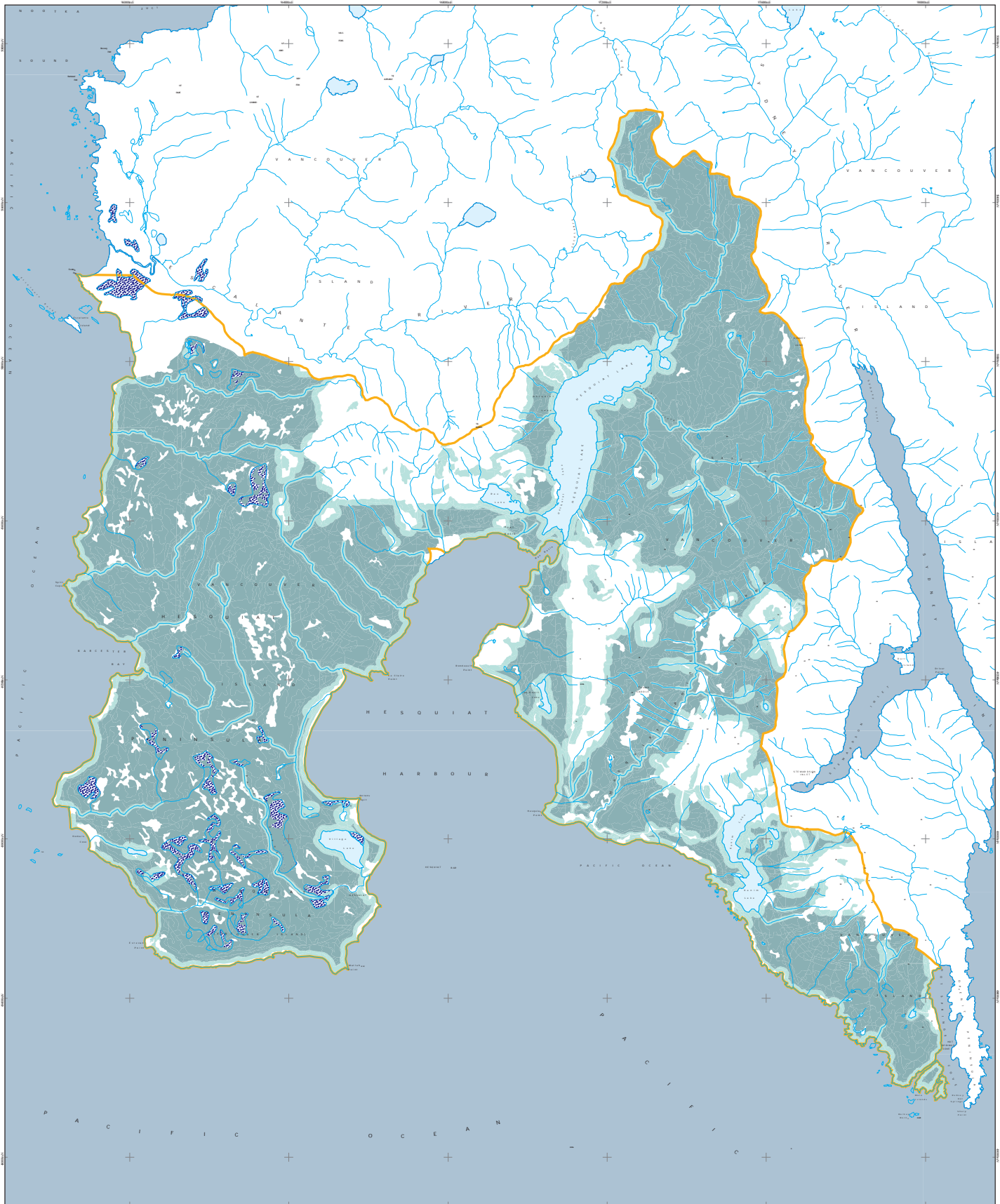


- Marbled Murrelet Reserves Exclusive of Existing Reserves
- Existing Reserve Network
- Marbled Murrelet Reserve Area Boundary
- TRIM streams
- Planning Unit Boundary

0 1 2 3 4 Kilometres

Albers Equal Area projection  
NAD83

# Hesquiaht Planning Unit Current Old Growth and Interior Old Growth Forest



- Old Growth Forest (age class 8 and 9)
- Interior Old Growth Forest
- Swamp/Marsh
- TRIM streams
- Planning Unit Boundary

0 1 2 3 4 Kilometers

Albers Equal Area projection  
NAD83

May 16, 2006

Map produced by ERM Vancouver Island Service Centre for the Clayoquot Sound Planning Committee



# Hesquiaht Planning Unit Old Growth and Interior Old Growth in Reserve Network



- Old Growth Forest in Reserve Network
- Interior Old Growth Forest in Reserve Network
- Reserve Network
- Swamp/Marsh
- TRIM streams
- Planning Unit Boundary

0 1 2 3 4 Kilometers

Albers Equal Area projection  
NAD83

# Hesquiaht Planning Unit Reserves added for Ecosystem Representation



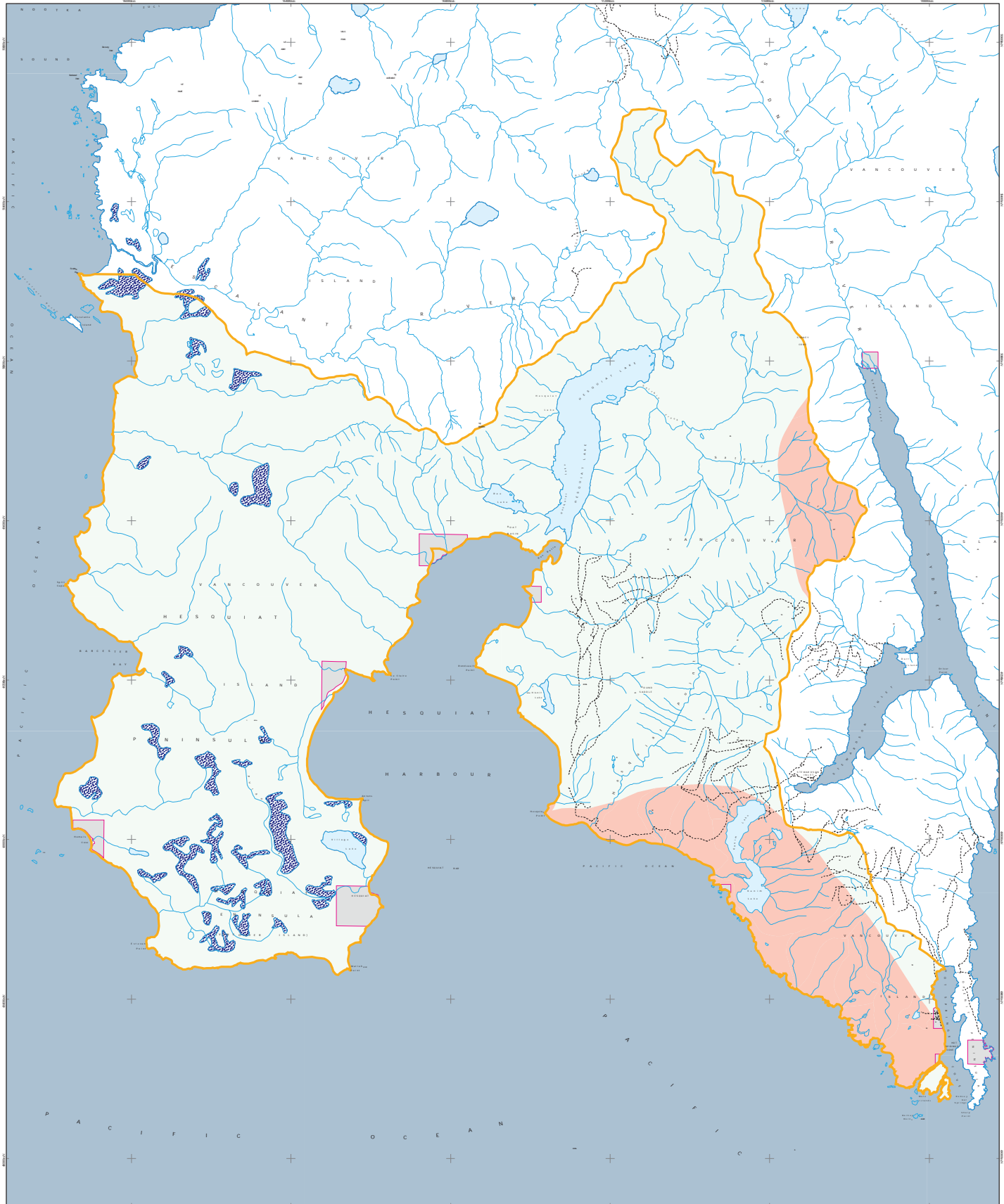
- Reserves to Complete Ecosystem Representation
- Reserves for Representative Ecosystems from Other Reserve Criteria
- TRIM streams
- Planning Unit Boundary

0 1 2 3 4 Kilometers

Albers Equal Area projection  
NAD83

# Hesquiaht Planning Unit

## Culturally Significant Areas - Ahousaht First Nation



- |  |  |
|--|--|
| <span style="display: inline-block; width: 15px; height: 10px; background-color: #f8d7da; border: 1px solid #c3e6cb;"></span> Culturally Significant Areas | <span style="display: inline-block; width: 15px; height: 10px; border: 1px dotted black;"></span> Trail                  |
| <span style="display: inline-block; width: 15px; height: 10px; background-color: #d6d8db;"></span> Indian Reserves   | <span style="display: inline-block; width: 15px; height: 10px; border: 1px solid black;"></span> Bridge                  |
| <span style="display: inline-block; width: 15px; height: 10px; border: 1px solid blue;"></span> TRIM Streams   | <span style="display: inline-block; width: 15px; height: 10px; border: 1px solid orange;"></span> Planning Unit Boundary |
| <span style="display: inline-block; width: 15px; height: 10px; border: 1px solid black;"></span> Paved Road  |  |
| <span style="display: inline-block; width: 15px; height: 10px; border: 1px dashed black;"></span> Gravel Road  |  |

0 1 2 3 4 Kilometers

Albers Equal Area projection  
NAD83

May 24, 2006

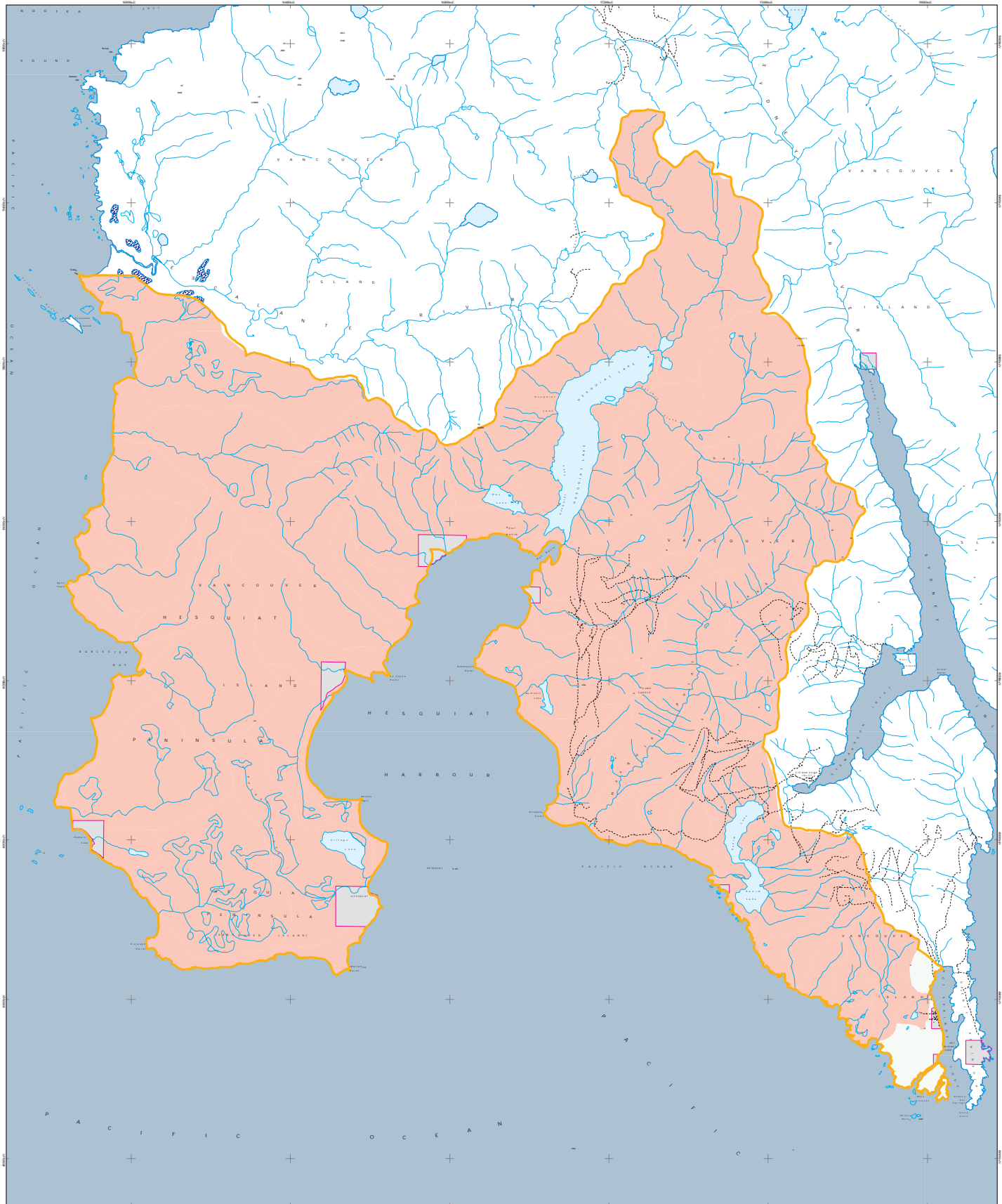
Map produced by EMB Vancouver Island Services Centre for the Clayoquot Sound Planning Committee

(8)



# Hesquiaht Planning Unit

## Culturally Significant Areas - Hesquiaht First Nation



- Culturally Significant Areas
- Indian Reserves
- TRIM Streams
- Paved Road
- Gravel Road
- Trail
- Bridge
- Planning Unit Boundary

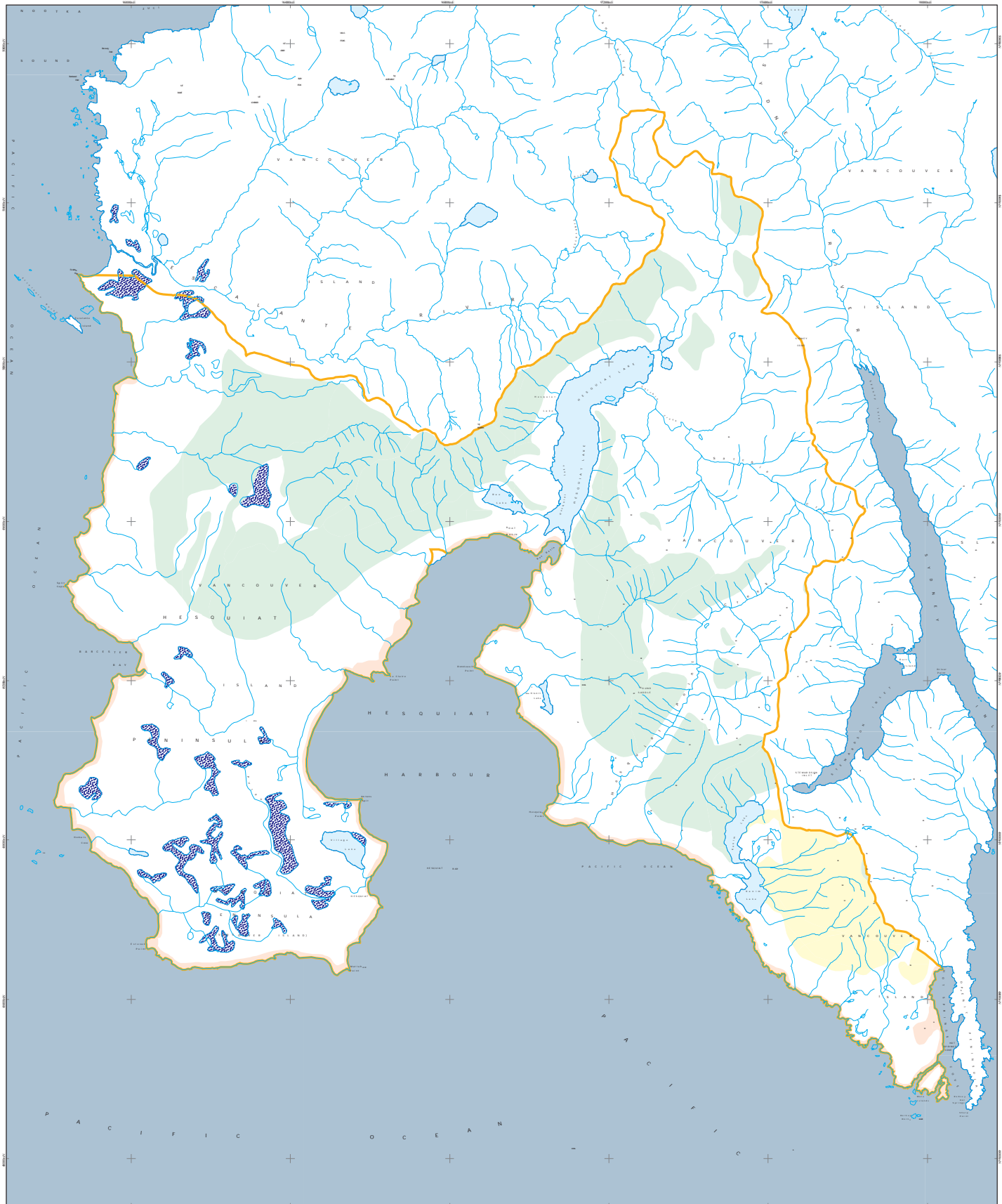
0 1 2 3 4 Kilometres

Albers Equal Area projection  
NAD83

May 16, 2006

Map produced by EMB Vancouver Island Service Centre for the Clayoquot Sound Planning Committee

# Hesquiaht Planning Unit Scenic Class Objectives



- Small-scale Alteration
- Minimal Alteration
- Natural Appearing
- TRIM streams
- Planning Unit Boundary

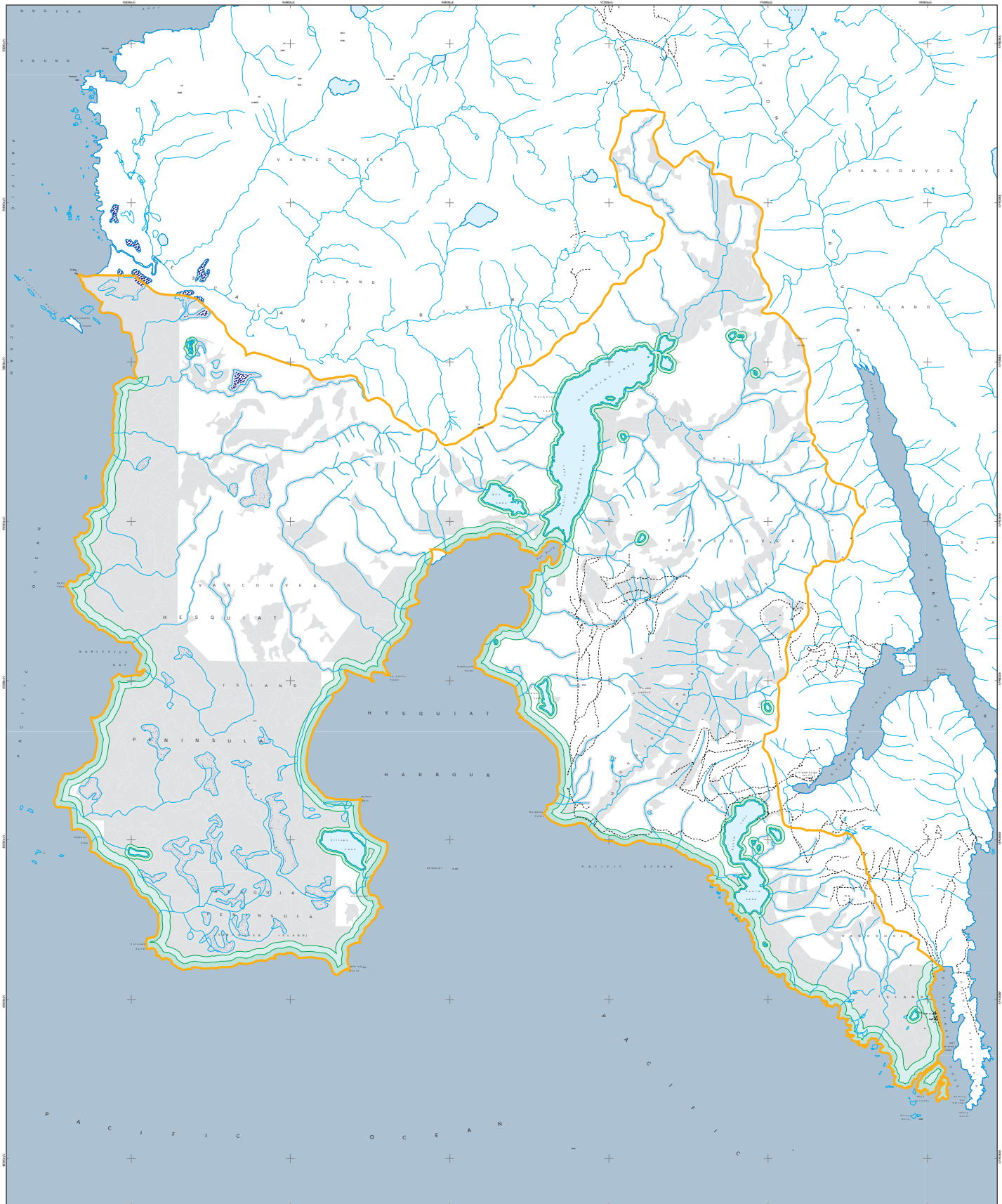
0 1 2 3 4 Kilometers

Albers Equal Area projection  
NAD83

May 16, 2006

Map produced by ERM Vancouver Island Service Centre for the Clayoquot Sound Planning Committee

# Hesquiaht Planning Unit Reserves for Recreation/Tourism Values



- |                          |                        |
|--------------------------|------------------------|
| Reserve                  | Paved Road             |
| Management Zone          | Gravel Road            |
| Existing Reserve Network | Trail                  |
| Recreation Polygons      | Bridge                 |
| TRIM streams             | Planning Unit Boundary |

0 1 2 3 4 Kilometres

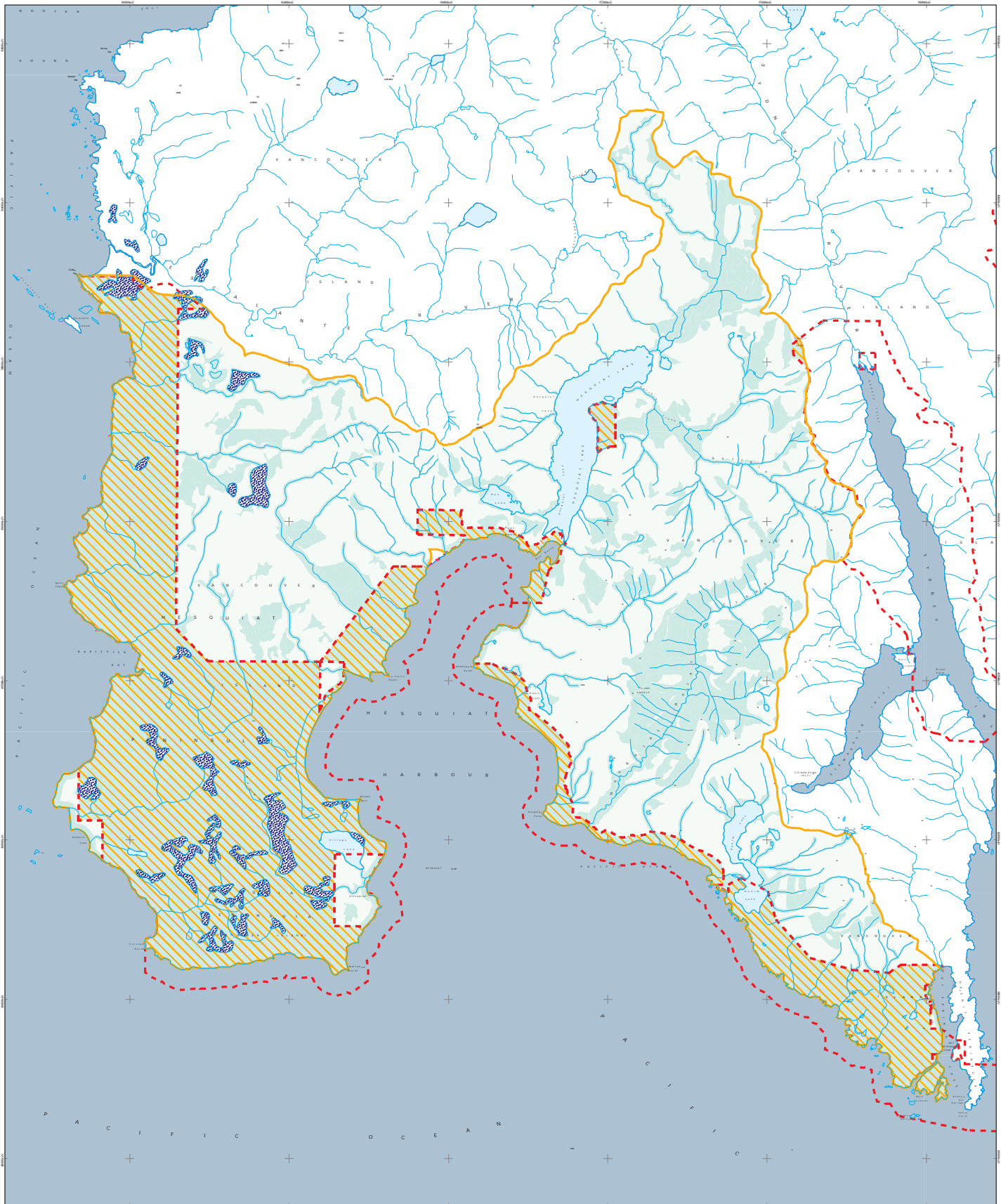
Albers Equal Area projection  
NAD83

May 16, 2006

Map produced by ERM Vancouver Island Service Centre for the Clayoquot Sound Planning Committee



# Hesquiaht Planning Unit Reserve Network



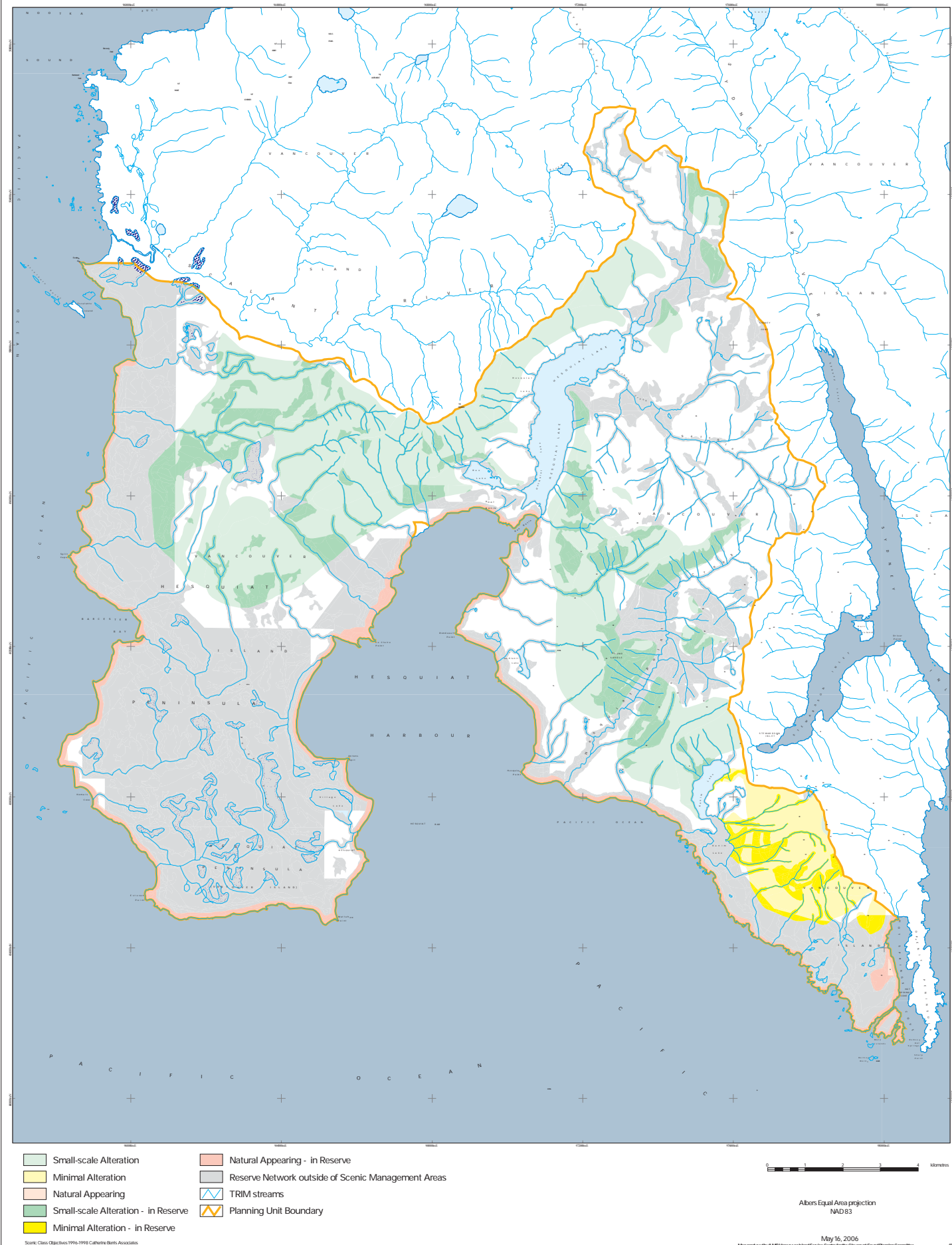
- Reserve Polygons
- Protected Areas
- TRIM streams
- Planning Unit Boundary

Note: Reserves established as per Clayquot Sound Scientific Panel Recommendations (See Recommendation R7.16 of Report 5)

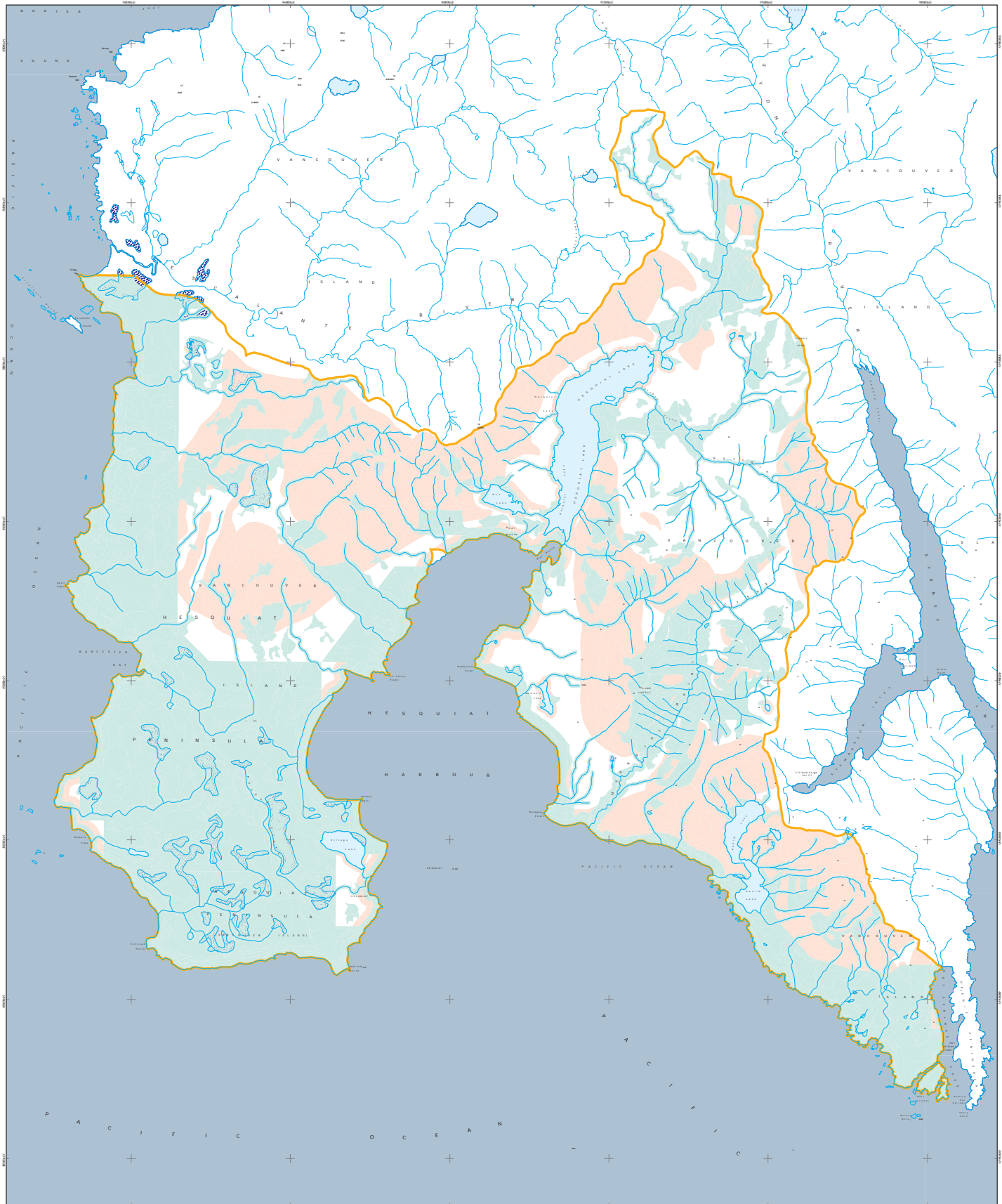
0 1 2 3 4 Kilometres

Albers Equal Area projection  
NAD83

# Hesquiaht Planning Unit Scenic Class Objectives and Reserve Network



# Hesquiaht Planning Unit Reserves and Harvestable Areas, including Special Management Zones



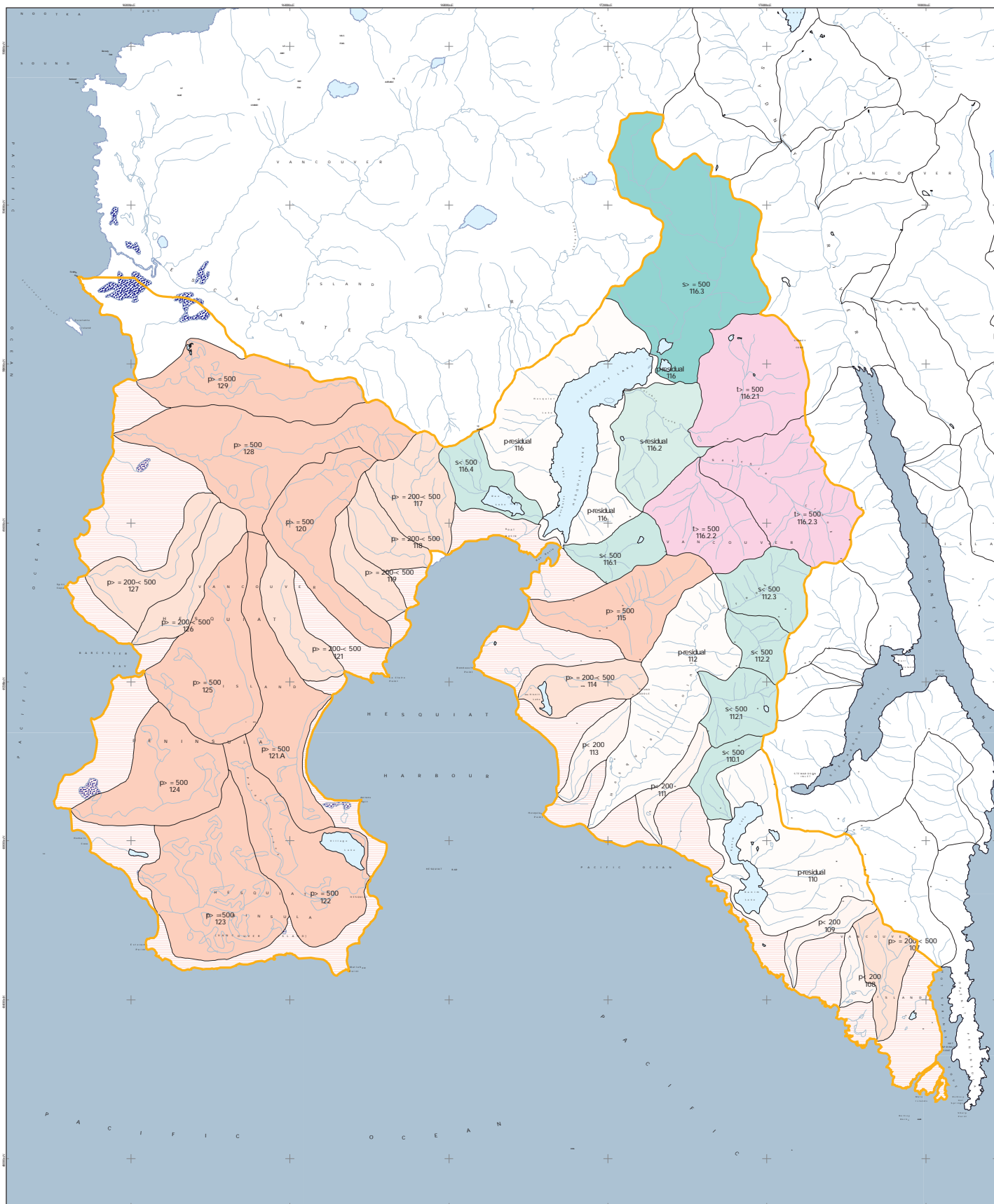
- Reserve Polygons
- Special Management Zones within Harvestable Areas
- Harvestable Areas
- TRIM streams
- Planning Unit Boundary

0 1 2 3 4 Kilometers

Albers Equal Area projection  
NAD83



# Hesquiaht Planning Unit Watershed Rate of Cut Limits



- |                                  |                            |                             |
|----------------------------------|----------------------------|-----------------------------|
| primary - not a watershed        | secondary - residual       | tertiary > = 500 hectares   |
| primary - residual               | secondary < 500 hectares   | quaternary < 500 hectares   |
| primary < 200 hectares           | secondary > = 500 hectares | quaternary > = 500 hectares |
| primary > = 200 - < 500 hectares | tertiary - residual        |                             |
| primary > = 500 hectares         | tertiary < 500 hectares    |                             |

0 1 2 3 4 Kilometers

Albers Equal Area projection  
NAD83

May 16, 2006

Map produced by ERM Vancouver Island Service Centre for the Clayoquot Sound Planning Committee