

III

III'

PAN AM MUSKWA
a-6-G/94-G-13

NORTHSTAR PHOENIX ET AL BOUGIE
c-36-F/94-G-15

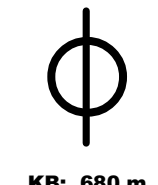
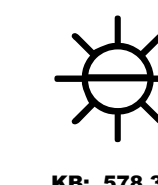
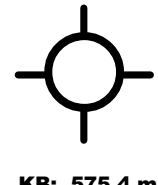
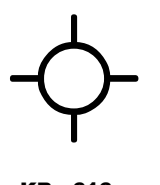
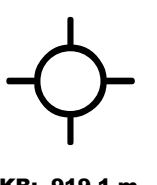
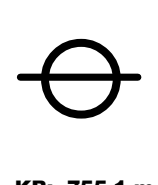
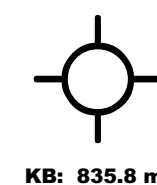
GULF ET AL BOAT
c-50-G/94-G-16

TP SHELL TOMMY LAKES
a-44-J/94-H-13

HUSKY GUTAH
c-80-H/94-H-14

HOME NUMAC ETTHITHUN
b-50-I/94-H-15

ARL RING
b-36-J/94-H-16



KB: 835.8 m

KB: 755.4 m

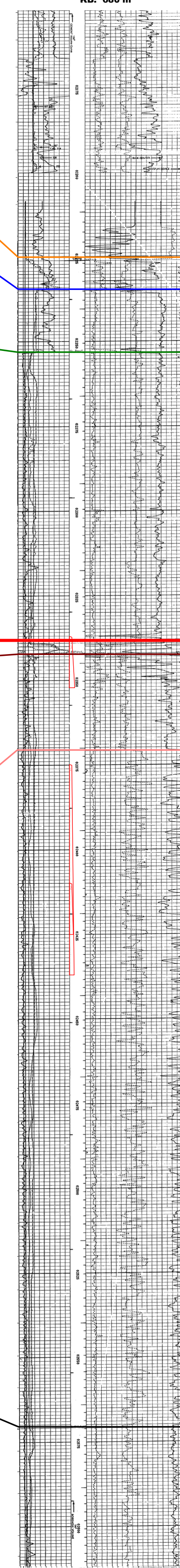
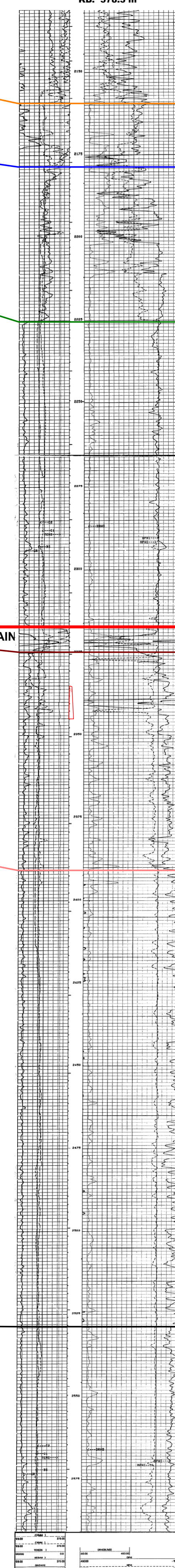
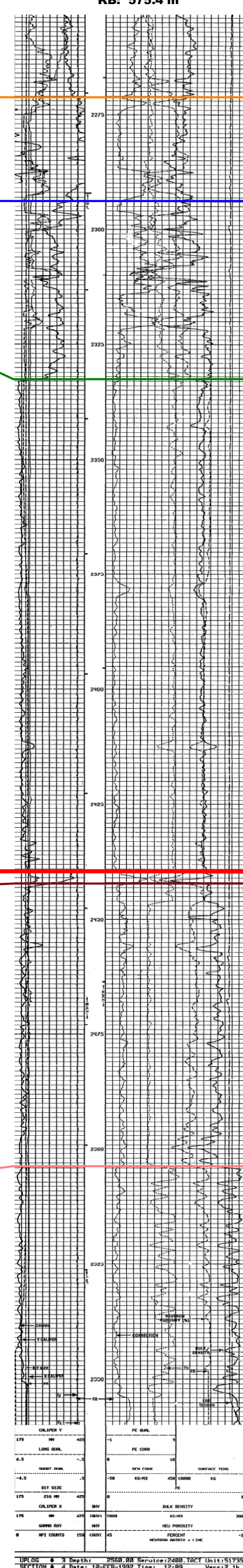
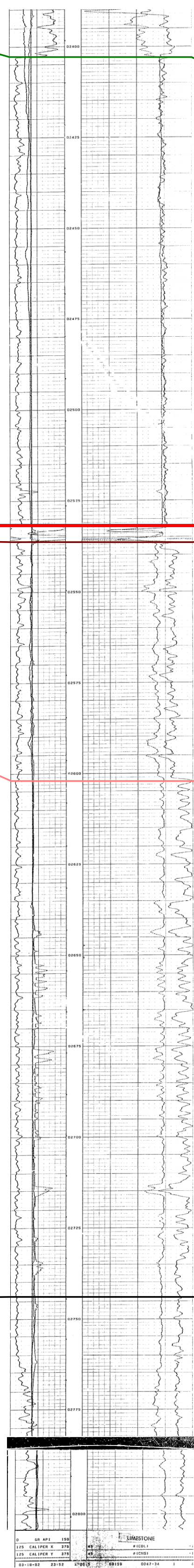
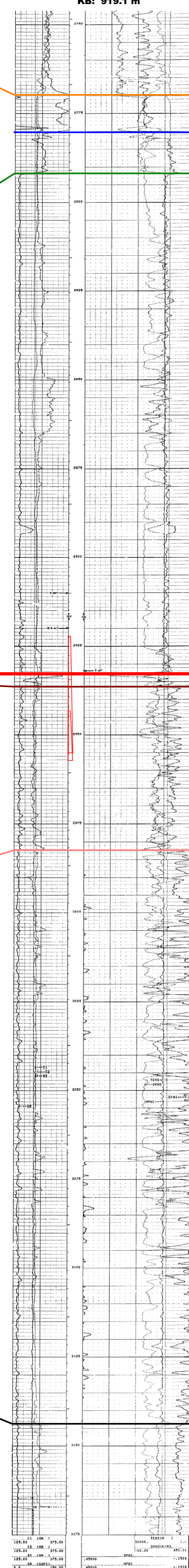
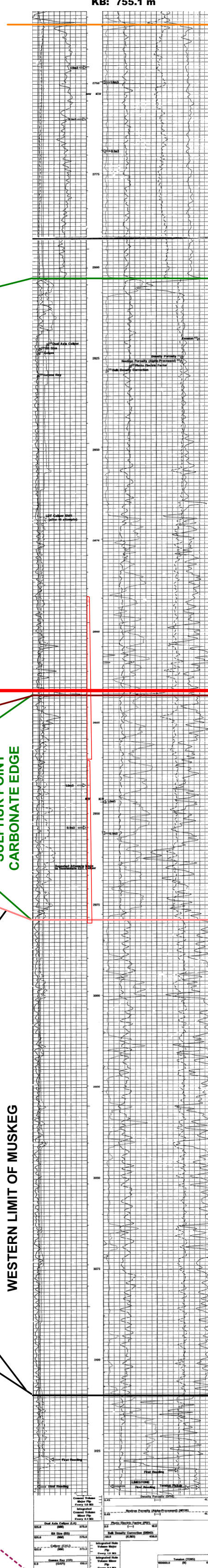
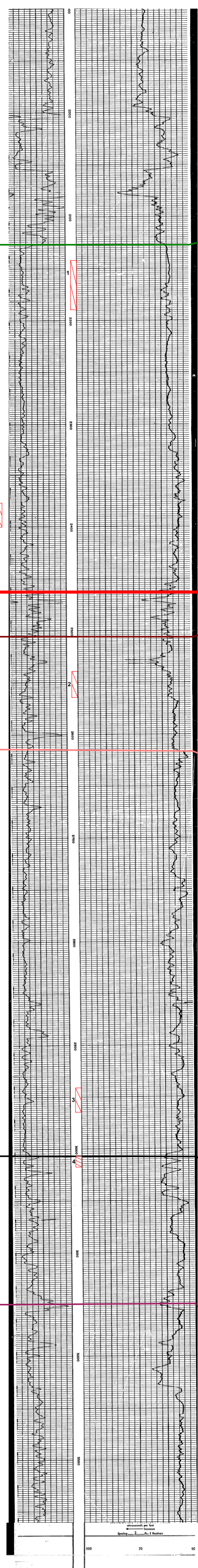
KB: 919.1 m

KB: 616 m

KB: 575.4 m

KB: 578.3 m

KB: 680 m



MUSKWA

OTTER PARK

SLAVE POINT

WATT MOUNTAIN

SULPHUR POINT

MUSKEG

KEG RIVER
PLATFORM

DATUM: TOP OF
WATT MOUNTAIN

DST#3 (2935 - 2980 m): REC. 10 m MUD
DST#4 (2890 - 2935 m): REC. 180 m gc wc WTR

DST#1 (2943 - 2957 m): REC. 1100 m mc WTR
80 m gc mc sa MUD
DST#2 (2922 - 2955 m): REC. 940 m gy WTR
300 m gc sa MUD

DST#4 (2335 - 2345 m): REC. 660 m gc sa WTR
245 m swc gc MUD
84 m gc MUD

DST#1 (2375 - 2437 m): REC. 140 m MUD
DST#2 (2410 - 2425 m): REC. 110 m gy MUD
30 m gy wc MUD
140 m MUD
DST#3 (2337 - 2352 m): REC. 30 m gy WATER and MUD
110 m gy MUD



EXPLORATION ASSESSMENT OF
DEEP DEVONIAN GAS PLAYS
OF NORTH EASTERN BRITISH COLUMBIA
LITHOSTRATIGRAPHIC CROSS SECTION
III - III'

GEOLOGIST: JAMAL MADI

DRAWN BY: MARGARET DOYLE

PETREL ROBERTSON CONSULTING LTD.

FEBRUARY 2003