

Pitt Meadows
Agricultural Land Use Inventory - 2011

Land Cover & Farmed Area

- Actively farmed
- Inactively farmed
- Anthropogenic (not farmed)
- Natural & Semi-natural

Municipality

- Boundaries (2010)

Agricultural Land Reserve

- Boundaries (2010)

Parcels

Survey Status

- Surveyed
- Not surveyed

Indian Reserves

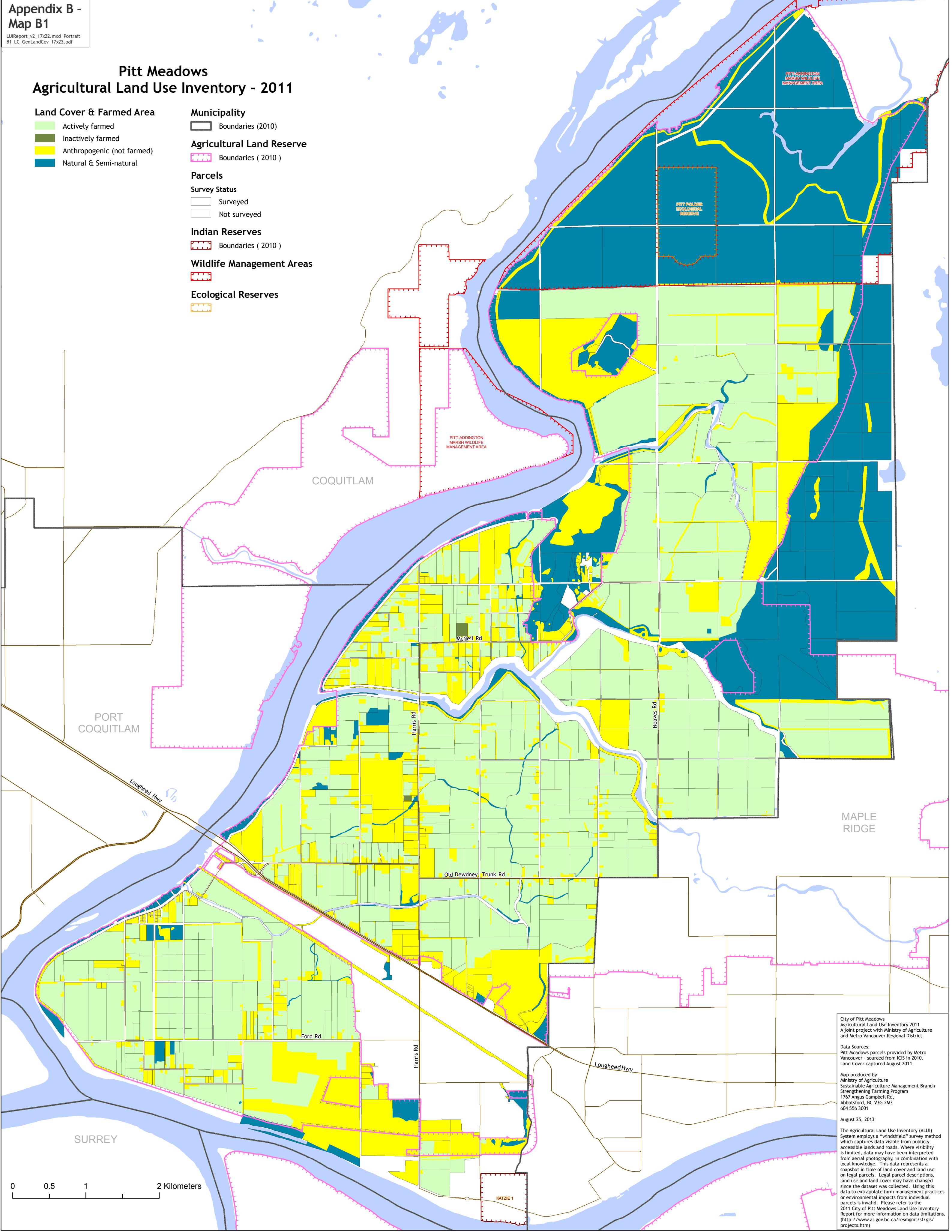
- Boundaries (2010)

Wildlife Management Areas

-

Ecological Reserves

-



City of Pitt Meadows
Agricultural Land Use Inventory 2011
A joint project with Ministry of Agriculture
and Metro Vancouver Regional District.

Data Sources:
Pitt Meadows parcels provided by Metro
Vancouver - sourced from ICIS in 2010.
Land Cover captured August 2011.

Map produced by
Ministry of Agriculture
Sustainable Agriculture Management Branch
Strengthening Farming Program
1767 Angus Campbell Rd,
Abbotsford, BC V3G 2M3
604 556 3001

August 25, 2013

The Agricultural Land Use Inventory (ALUI)
System employs a "windshield" survey method
which captures data visible from publicly
accessible lands and roads. Where visibility
is limited, data may have been interpreted
from aerial photography, in combination with
local knowledge. This data represents a
snapshot in time of land cover and land use
on legal parcels. Legal parcel descriptions,
land use and land cover may have changed
since the dataset was collected. Using this
data to extrapolate farm management practices
or environmental impacts from individual
parcels is invalid. Please refer to the
2011 City of Pitt Meadows Land Use Inventory
Report for more information on data limitations.
(<http://www.al.gov.bc.ca/resmgmt/sf/gis/projects.htm>)

Pitt Meadows
Agricultural Land Use Inventory - 2011

Land Cover & Farmed Area

- Farmed**
- Cultivated field crops
 - Farm infrastructure
 - Greenhouses & crop barns

Anthropogenic (not farmed)

- Managed vegetation
- Built up - Settlement, Transportation, etc.
- Non Built or Bare
- Anthropogenic Waterbodies

Natural & Semi-natural

- Vegetated
- Waterbodies & Wetlands

Municipality

- Boundaries (2010)

Agricultural Land Reserve

- Boundaries (2010)

Parcels

Survey Status

- Surveyed
- Not surveyed

Indian Reserves

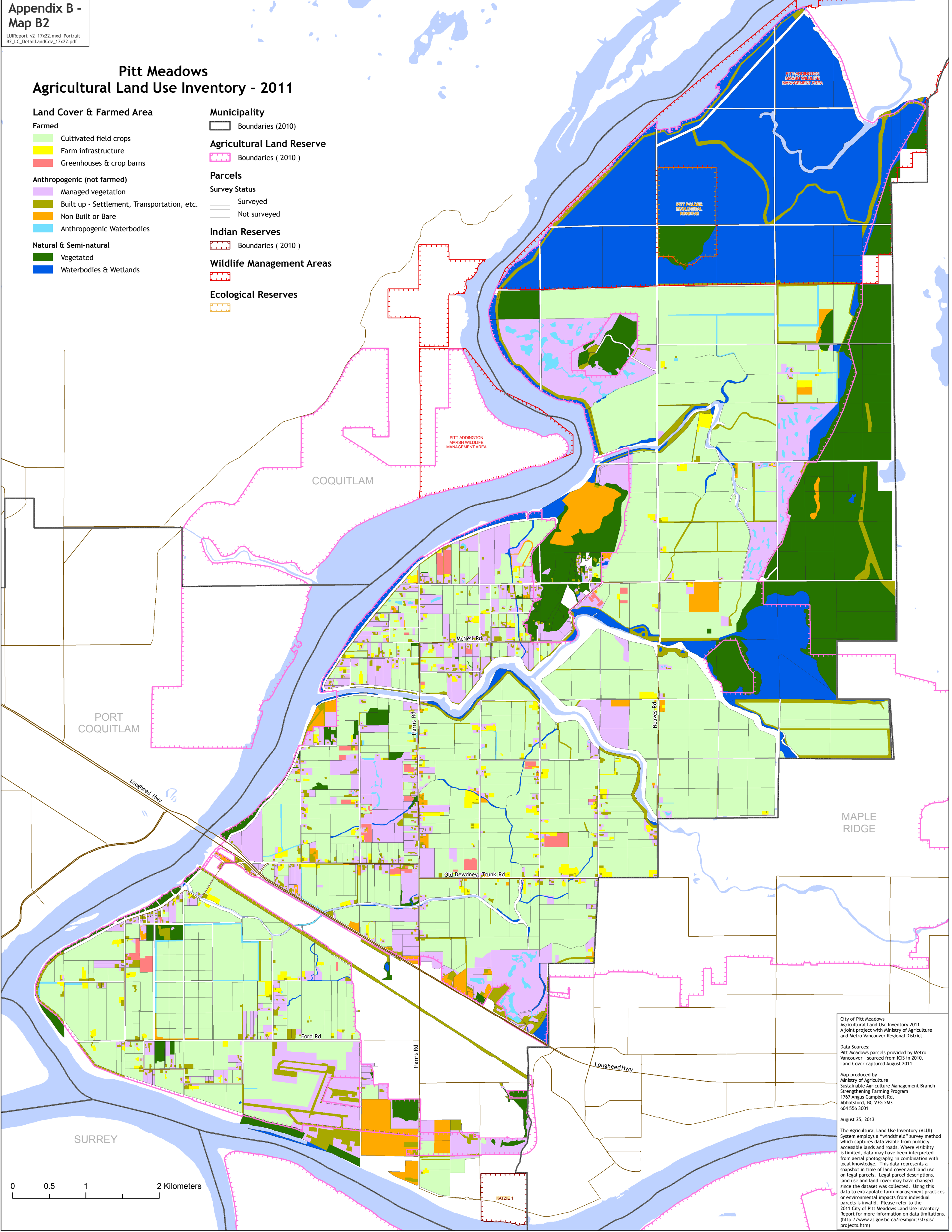
- Boundaries (2010)

Wildlife Management Areas

-

Ecological Reserves

-



City of Pitt Meadows
Agricultural Land Use Inventory 2011
A joint project with Ministry of Agriculture
and Metro Vancouver Regional District.

Data Sources:
Pitt Meadows parcels provided by Metro
Vancouver - sourced from ICIS in 2010.
Land Cover captured August 2011.

Map produced by
Ministry of Agriculture
Sustainable Agriculture Management Branch
Strengthening Farming Program
1767 Angus Campbell Rd,
Abbotsford, BC V3G 2M3
604 556 3001

August 25, 2013

The Agricultural Land Use Inventory (ALUI)
System employs a "windshield" survey method
which captures data visible from publicly
accessible lands and roads. Where visibility
is limited, data may have been interpreted
from aerial photography, in combination with
local knowledge. This data represents a
snapshot in time of land cover and land use
on legal parcels. Legal parcel descriptions,
land use and land cover may have changed
since the dataset was collected. Using this
data to extrapolate farm management practices
or environmental impacts from individual
parcels is invalid. Please refer to the
2011 City of Pitt Meadows Land Use Inventory
Report for more information on data limitations.
(<http://www.al.gov.bc.ca/resmgmt/sf/gis/projects.htm>)

Pitt Meadows
Agricultural Land Use Inventory - 2011

Parcel Land Use

- "Used for farming"
- "Not used for farming"

Municipality

- Boundaries (2010)

Agricultural Land Reserve

- Boundaries (2010)

Parcels

Survey Status

- Surveyed
- Not surveyed

Indian Reserves

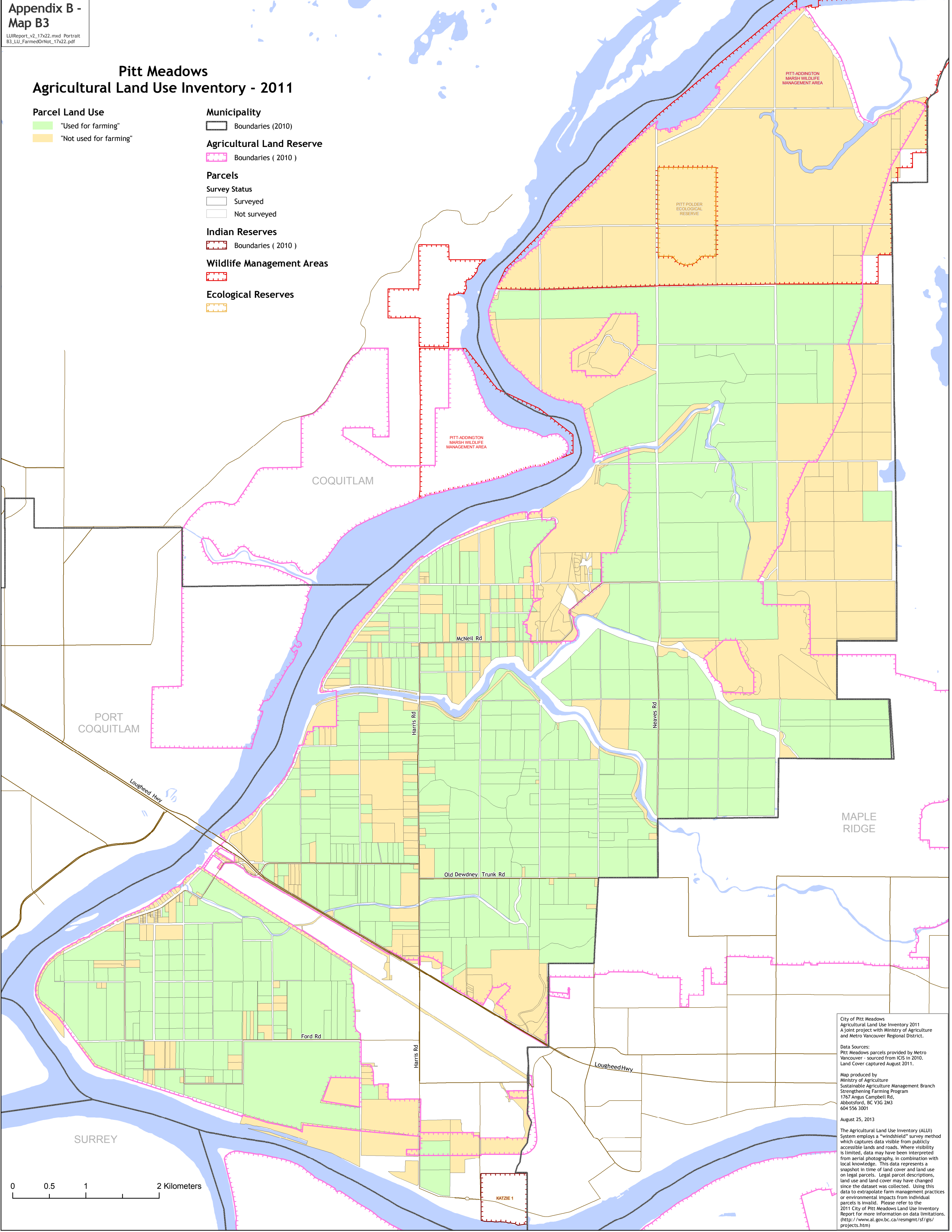
- Boundaries (2010)

Wildlife Management Areas

-

Ecological Reserves

-



City of Pitt Meadows
Agricultural Land Use Inventory 2011
A joint project with Ministry of Agriculture
and Metro Vancouver Regional District.

Data Sources:
Pitt Meadows parcels provided by Metro
Vancouver - sourced from ICIS in 2010.
Land Cover captured August 2011.

Map produced by
Ministry of Agriculture
Sustainable Agriculture Management Branch
Strengthening Farming Program
1767 Angus Campbell Rd,
Abbotsford, BC V3G 2M3
604 556 3001

August 25, 2013

The Agricultural Land Use Inventory (ALUI)
System employs a "windshield" survey method
which captures data visible from publicly
accessible lands and roads. Where visibility
is limited, data may have been interpreted
from aerial photography, in combination with
local knowledge. This data represents a
snapshot in time of land cover and land use
on legal parcels. Legal parcel descriptions,
land use and land cover may have changed
since the dataset was collected. Using this
data to extrapolate farm management practices
or environmental impacts from individual
parcels is invalid. Please refer to the
2011 City of Pitt Meadows Land Use Inventory
Report for more information on data limitations.
(<http://www.al.gov.bc.ca/resmgmt/sf/gis/projects.htm>)

Pitt Meadows
Agricultural Land Use Inventory - 2011

Land Use & Farming

- Used for farming - mixed use
- Used only for farming
- Residential
- No apparent use
- Transportation, communications
- Protected area / park / reserve
- Institutional & community
- Industrial
- Recreation & leisure - golf
- Recreation & leisure
- Commercial & service
- Water management
- Dumps & deposits
- Gravel extraction
- Utilities
- Land in transition

Municipality

- Boundaries (2010)

Agricultural Land Reserve

- Boundaries (2010)

Parcels

Survey Status

- Surveyed
- Not surveyed

Indian Reserves

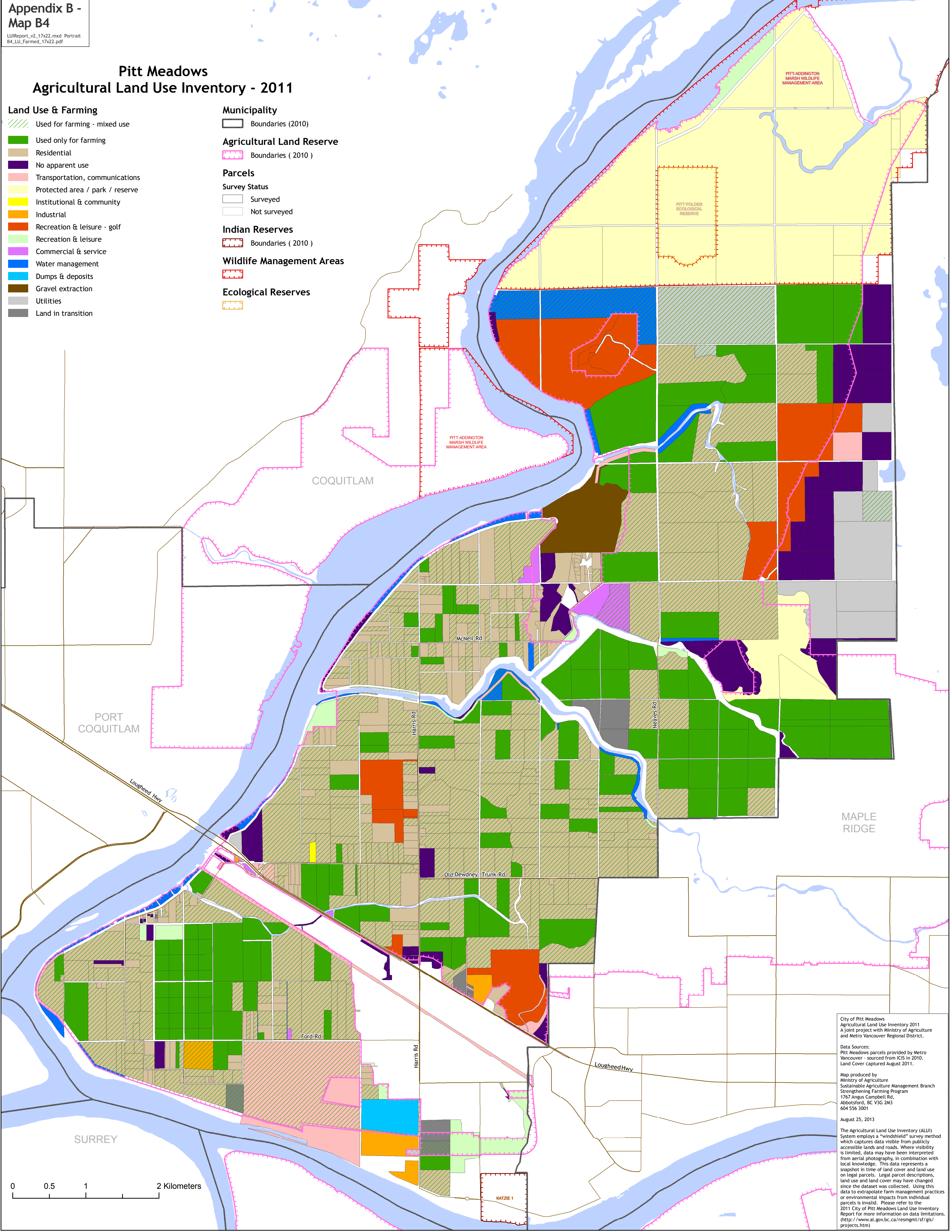
- Boundaries (2010)

Wildlife Management Areas

-

Ecological Reserves

-



City of Pitt Meadows
Agricultural Land Use Inventory 2011
A joint project with Ministry of Agriculture
and Metro Vancouver Regional District.

Data Sources:
Pitt Meadows parcels provided by Metro
Vancouver - sourced from ICIS in 2010.
Land Cover captured August 2011.

Map produced by
Ministry of Agriculture
Sustainable Agriculture Management Branch
Strengthening Farming Program
1767 Angus Campbell Rd,
Abbotsford, BC V3G 2M3
604 556 3001

August 25, 2013

The Agricultural Land Use Inventory (ALUI)
System employs a "windshield" survey method
which captures data visible from publicly
accessible lands and roads. Where visibility
is limited, data may have been interpreted
from aerial photography, in combination with
local knowledge. This data represents a
snapshot in time of land cover and land use
on legal parcels. Legal parcel descriptions,
land use and land cover may have changed
since the dataset was collected. Using this
data to extrapolate farm management practices
or environmental impacts from individual
parcels is invalid. Please refer to the
2011 City of Pitt Meadows Land Use Inventory
Report for more information on data limitations.
(<http://www.al.gov.bc.ca/resmgmt/sf/gis/projects.htm>)

Pitt Meadows
Agricultural Land Use Inventory - 2011

Land Status with Respect to Farming

- Actively farmed
- Farming support
- Unavailable for farming - land use
- Unavailable for farming - land cover
- Limited potential for farming - site limitation
- Available & with potential for farming

Municipality

- Boundaries (2010)

Agricultural Land Reserve

- Boundaries (2010)

Parcels

Survey Status

- Surveyed
- Not surveyed

Indian Reserves

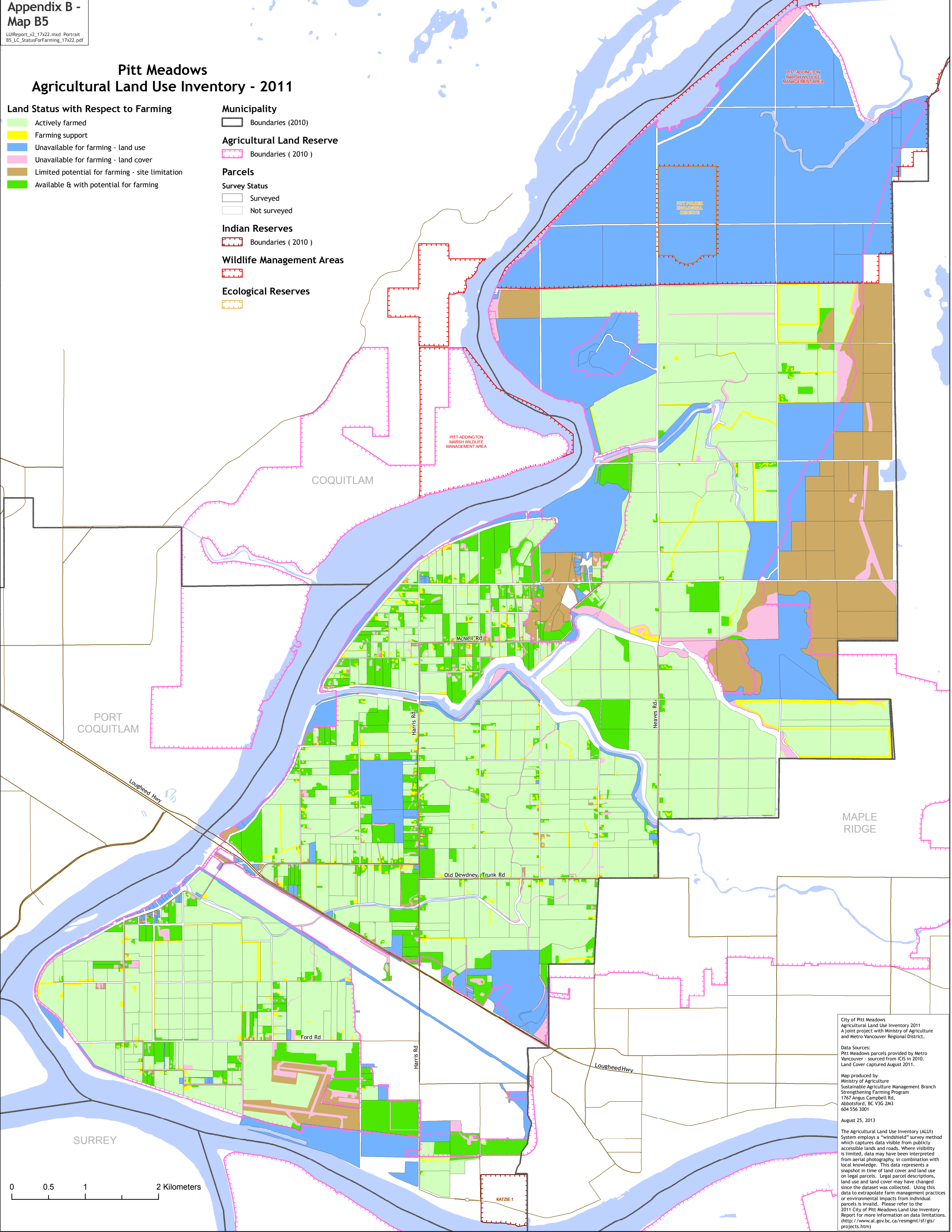
- Boundaries (2010)

Wildlife Management Areas

-

Ecological Reserves

-



City of Pitt Meadows
Agricultural Land Use Inventory 2011
A joint project with Ministry of Agriculture
and Metro Vancouver Regional District.

Data Sources:
Pitt Meadows parcels provided by Metro
Vancouver – sourced from ICIS in 2010.
Land Cover captured August 2011.

Map produced by
Ministry of Agriculture
Sustainable Agriculture Management Branch
Strengthening Farming Program
1767 Angus Campbell Rd,
Abbotsford, BC V3G 2M3
604 556 3001

August 25, 2013

The Agricultural Land Use Inventory (ALUI)
System employs a “windshield” survey method
which captures data visible from publicly
accessible lands and roads. Where visibility
is limited, data may have been interpreted
from aerial photography, in combination with
local knowledge. This data represents a
snapshot in time of land cover and land use
on legal parcels. Legal parcel descriptions,
land use and land cover may have changed
since the dataset was collected. Using this
data to extrapolate farm management practices
or environmental impacts from individual
parcels is invalid. Please refer to the
2011 City of Pitt Meadows Land Use Inventory
Report for more information on data limitations.
(<http://www.al.gov.bc.ca/resmgmt/sf/gis/projects.htm>)

Pitt Meadows
Agricultural Land Use Inventory - 2011

Land Available & with Potential for Farming

- On parcels "Used for farming"
- On parcels "Not used for farming"

Municipality

- Boundaries (2010)

Agricultural Land Reserve

- Boundaries (2010)

Parcels

Survey Status

- Surveyed
- Not surveyed

Indian Reserves

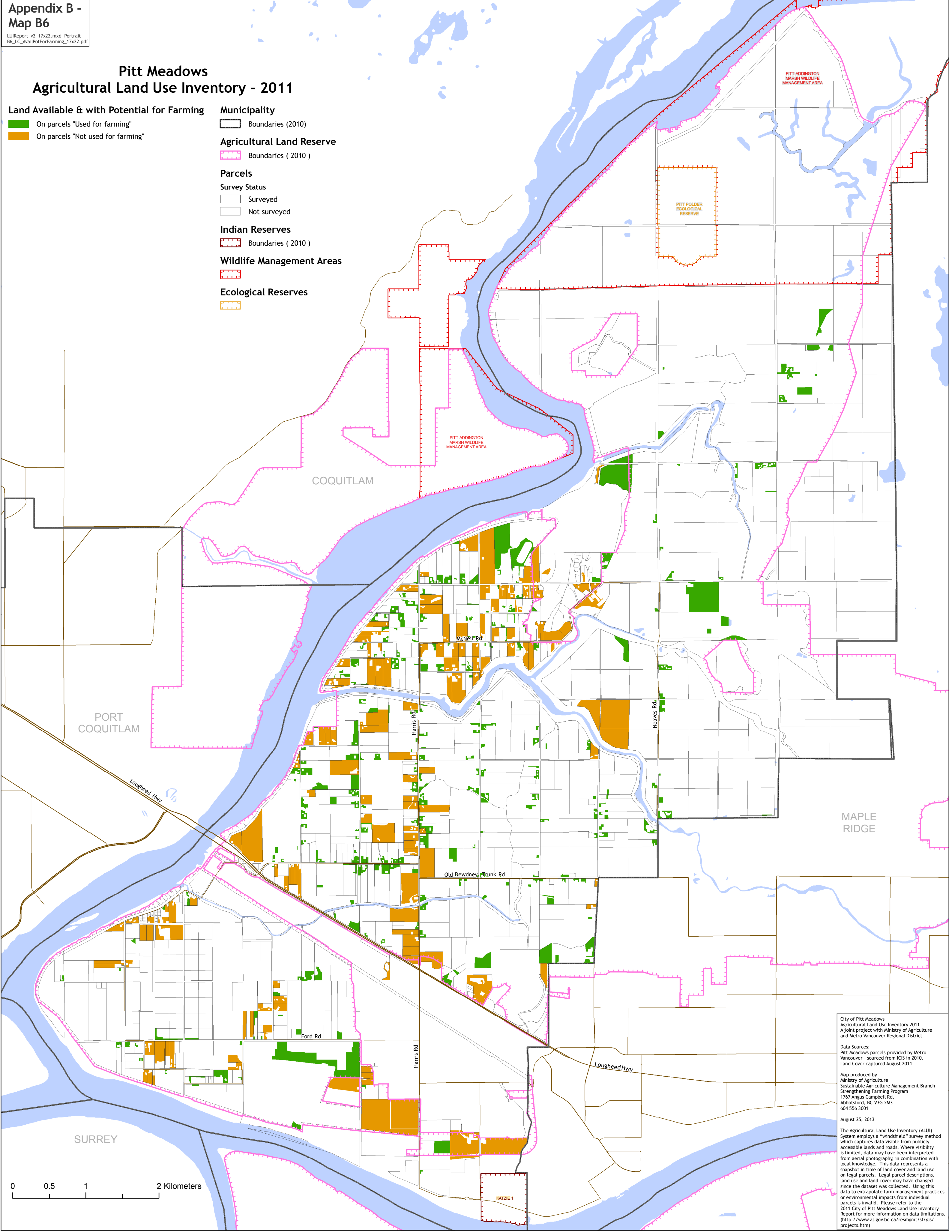
- Boundaries (2010)

Wildlife Management Areas

-

Ecological Reserves

-



City of Pitt Meadows
Agricultural Land Use Inventory 2011
A joint project with Ministry of Agriculture
and Metro Vancouver Regional District.

Data Sources:
Pitt Meadows parcels provided by Metro
Vancouver - sourced from ICIS in 2010.
Land Cover captured August 2011.

Map produced by
Ministry of Agriculture
Sustainable Agriculture Management Branch
Strengthening Farming Program
1767 Angus Campbell Rd,
Abbotsford, BC V3G 2M3
604 556 3001

August 25, 2013

The Agricultural Land Use Inventory (ALUI)
System employs a "windshield" survey method
which captures data visible from publicly
accessible lands and roads. Where visibility
is limited, data may have been interpreted
from aerial photography, in combination with
local knowledge. This data represents a
snapshot in time of land cover and land use
on legal parcels. Legal parcel descriptions,
land use and land cover may have changed
since the dataset was collected. Using this
data to extrapolate farm management practices
or environmental impacts from individual
parcels is invalid. Please refer to the
2011 City of Pitt Meadows Land Use Inventory
Report for more information on data limitations.
(<http://www.al.gov.bc.ca/resmgmt/sf/gis/projects.htm>)

Pitt Meadows
Agricultural Land Use Inventory - 2011

Cultivated Field Crops

- Berries
- Forage & pasture
- Nursery & tree plantations
- Other (only 4)
- Turf (only 4)
- Nut trees (only 2)
- Floriculture (only 2)
- Vegetables (only 2)

Municipality

- Boundaries (2010)

Agricultural Land Reserve

- Boundaries (2010)

Parcels

- Surveyed
- Not surveyed

Indian Reserves

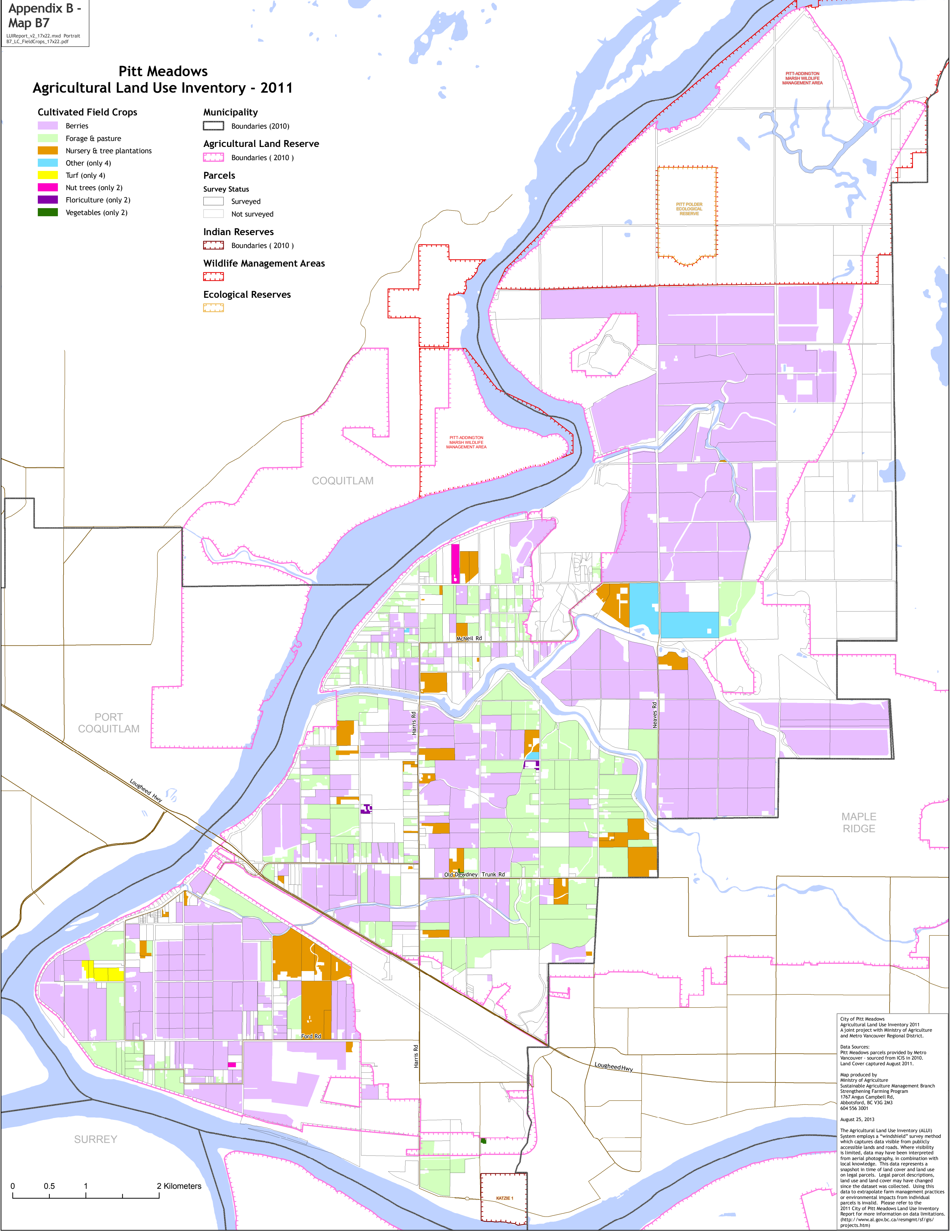
- Boundaries (2010)

Wildlife Management Areas

-

Ecological Reserves

-



City of Pitt Meadows
Agricultural Land Use Inventory 2011
A joint project with Ministry of Agriculture
and Metro Vancouver Regional District.

Data Sources:
Pitt Meadows parcels provided by Metro
Vancouver – sourced from ICIS in 2010.
Land Cover captured August 2011.

Map produced by
Ministry of Agriculture
Sustainable Agriculture Management Branch
Strengthening Farming Program
1767 Angus Campbell Rd,
Abbotsford, BC V3G 2M3
604 556 3001

August 25, 2013

The Agricultural Land Use Inventory (ALUI)
System employs a “windshield” survey method
which captures data visible from publicly
accessible lands and roads. Where visibility
is limited, data may have been interpreted
from aerial photography, in combination with
local knowledge. This data represents a
snapshot in time of land cover and land use
on legal parcels. Legal parcel descriptions,
land use and land cover may have changed
since the dataset was collected. Using this
data to extrapolate farm management practices
or environmental impacts from individual
parcels is invalid. Please refer to the
2011 City of Pitt Meadows Land Use Inventory
Report for more information on data limitations.
(<http://www.al.gov.bc.ca/resmgmt/sf/gis/projects.htm>)

Pitt Meadows
Agricultural Land Use Inventory - 2011

Berries

- Blueberries, Mature
- Blueberries, Young
- Cranberries, Mature
- Cranberries, Young
- Raspberries, Mature
- Strawberries

Municipality

- Boundaries (2010)

Agricultural Land Reserve

- Boundaries (2010)

Parcels

- Surveyed
- Not surveyed

Indian Reserves

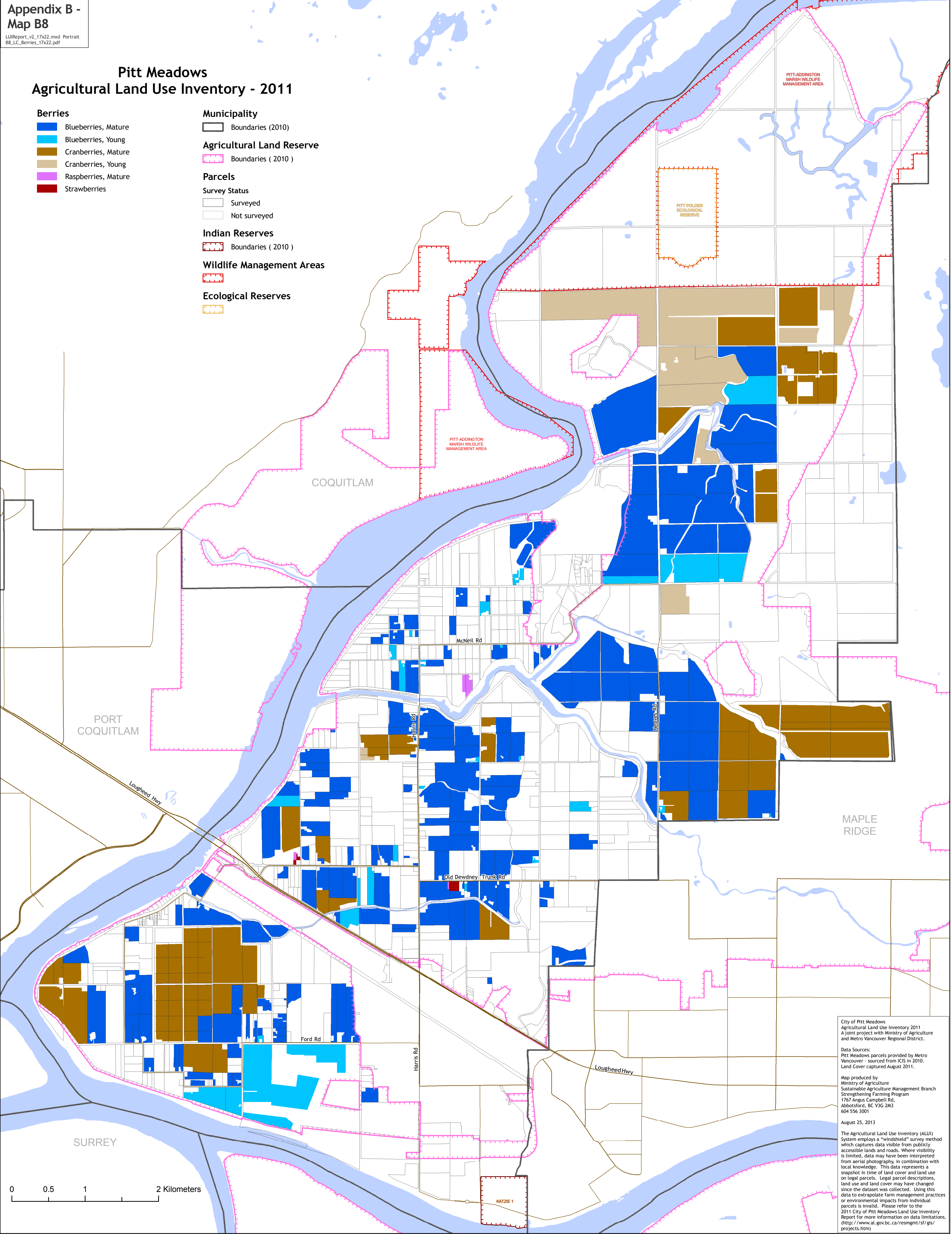
- Boundaries (2010)

Wildlife Management Areas

-

Ecological Reserves

-



City of Pitt Meadows
Agricultural Land Use Inventory 2011
A joint project with Ministry of Agriculture
and Metro Vancouver Regional District.

Data Sources:
Pitt Meadows parcels provided by Metro
Vancouver - sourced from ICIS in 2010.
Land Cover captured August 2011.

Map produced by
Ministry of Agriculture
Sustainable Agriculture Management Branch
Strengthening Farming Program
1767 Angus Campbell Rd,
Abbotsford, BC V3G 2M3
604 556 3001

August 25, 2013

The Agricultural Land Use Inventory (ALUI)
System employs a "windshield" survey method
which captures data visible from publicly
accessible lands and roads. Where visibility
is limited, data may have been interpreted
from aerial photography, in combination with
local knowledge. This data represents a
snapshot in time of land cover and land use
on legal parcels. Legal parcel descriptions,
land use and land cover may have changed
since the dataset was collected. Using this
data to extrapolate farm management practices
or environmental impacts from individual
parcels is invalid. Please refer to the
2011 City of Pitt Meadows Land Use Inventory
Report for more information on data limitations.
(<http://www.al.gov.bc.ca/resmgmt/sf/gis/projects.htm>)

Pitt Meadows
Agricultural Land Use Inventory - 2011

Forage & Pasture

Crop Type

- Grass
- Forage corn
- Legume (only 1)

Agricultural Practice

- Forage
- Pasture

Municipality

- Boundaries (2010)

Agricultural Land Reserve

- Boundaries (2010)

Parcels

Survey Status

- Surveyed
- Not surveyed

Indian Reserves

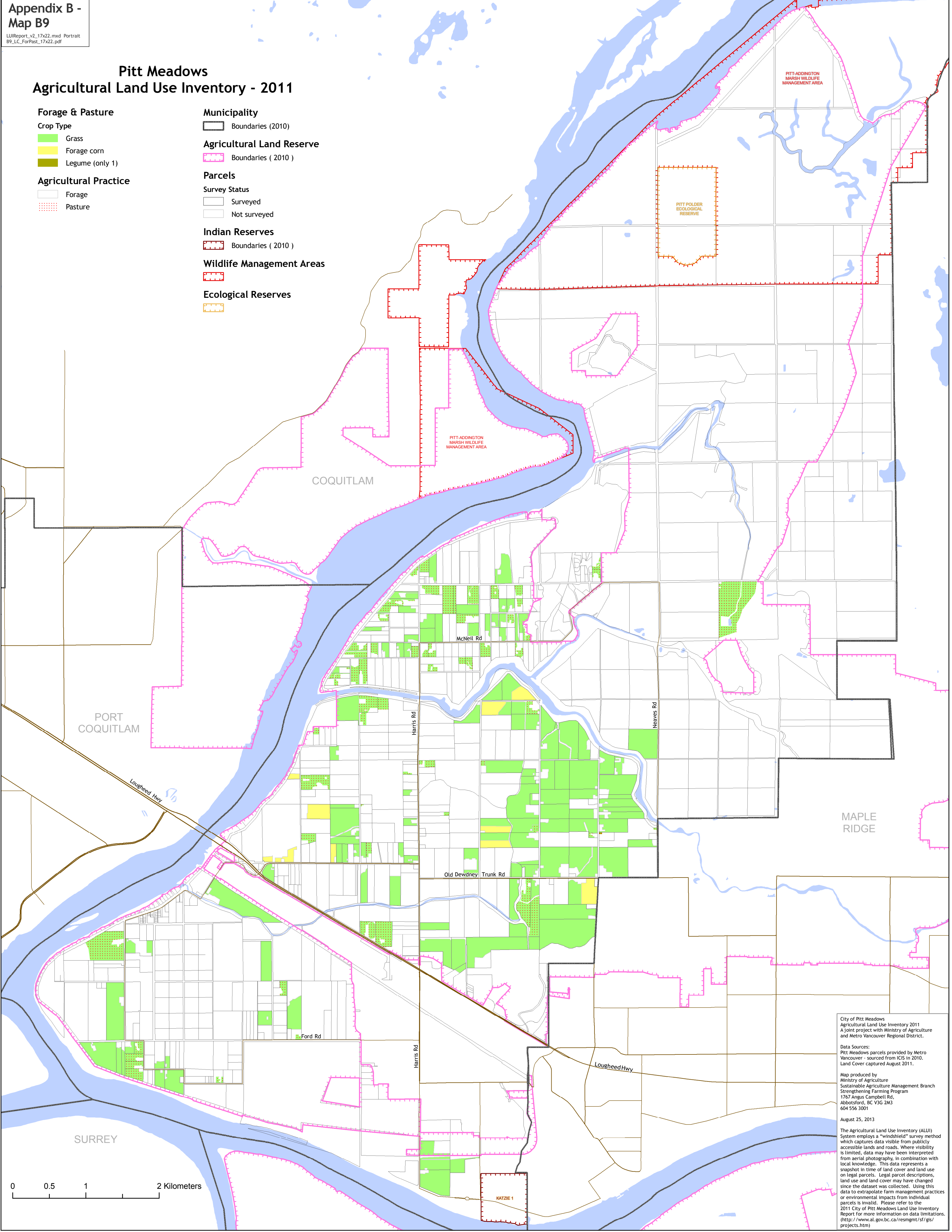
- Boundaries (2010)

Wildlife Management Areas

-

Ecological Reserves

-



City of Pitt Meadows
Agricultural Land Use Inventory 2011
A joint project with Ministry of Agriculture
and Metro Vancouver Regional District.

Data Sources:
Pitt Meadows parcels provided by Metro
Vancouver – sourced from ICIS in 2010.
Land Cover captured August 2011.

Map produced by
Ministry of Agriculture
Sustainable Agriculture Management Branch
Strengthening Farming Program
1767 Angus Campbell Rd,
Abbotsford, BC V3G 2M3
604 556 3001

August 25, 2013

The Agricultural Land Use Inventory (ALUI)
System employs a “windshield” survey method
which captures data visible from publicly
accessible lands and roads. Where visibility
is limited, data may have been interpreted
from aerial photography, in combination with
local knowledge. This data represents a
snapshot in time of land cover and land use
on legal parcels. Legal parcel descriptions,
land use and land cover may have changed
since the dataset was collected. Using this
data to extrapolate farm management practices
or environmental impacts from individual
parcels is invalid. Please refer to the
2011 City of Pitt Meadows Land Use Inventory
Report for more information on data limitations.
(<http://www.al.gov.bc.ca/resmgmt/sf/gis/projects.htm>)

Pitt Meadows
Agricultural Land Use Inventory - 2011

Nursery & tree plantations

- Nursery - Ornamentals and shrubs
- Nursery - Other (forestry stock, cedar hedging, mixed)
- Tree plantation - unmaintained (only 1)
- Tree plantation - Christmas trees (only 1)

Municipality

- Boundaries (2010)

Agricultural Land Reserve

- Boundaries (2010)

Parcels

Survey Status

- Surveyed
- Not surveyed

Indian Reserves

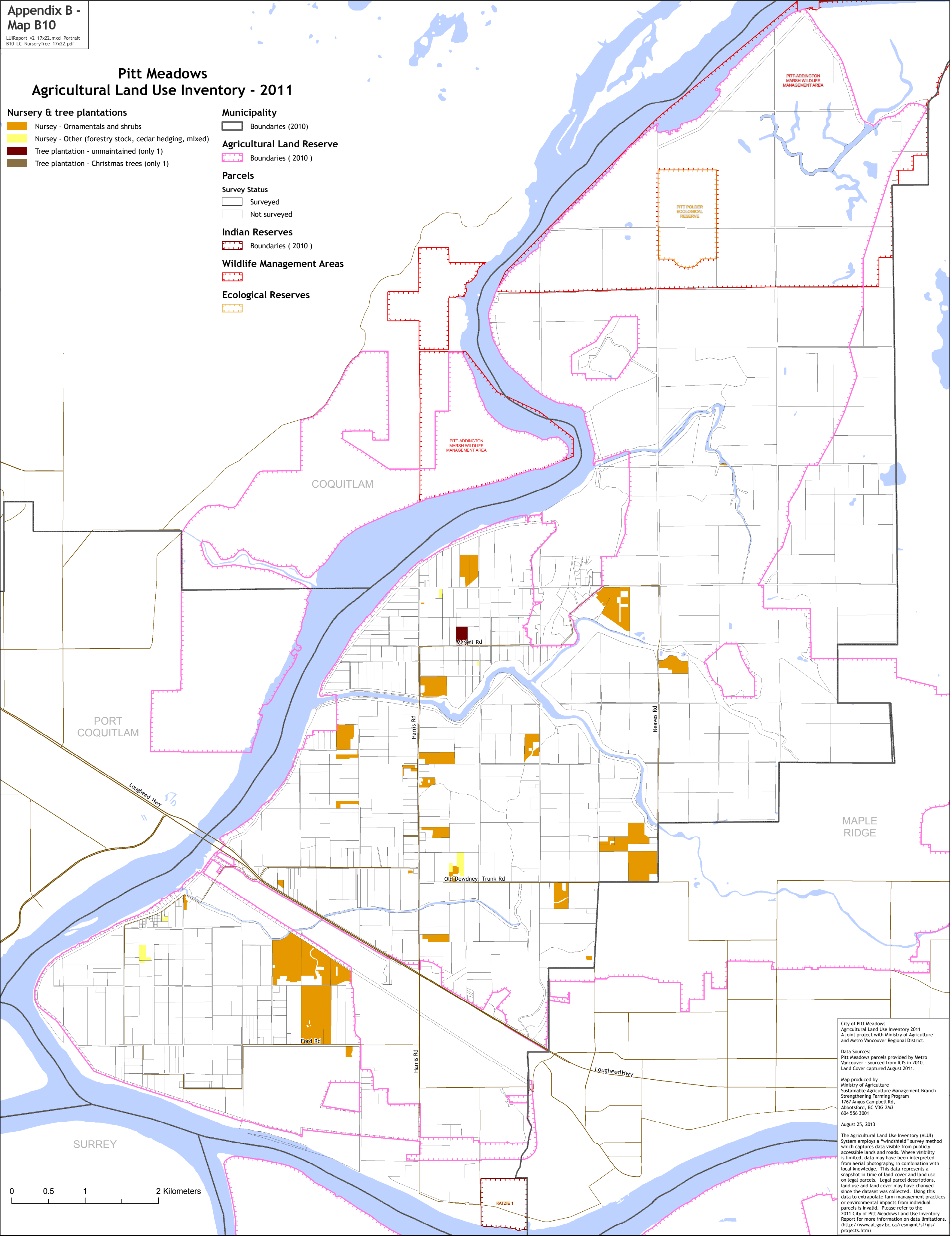
- Boundaries (2010)

Wildlife Management Areas

-

Ecological Reserves

-



City of Pitt Meadows
Agricultural Land Use Inventory 2011
A joint project with Ministry of Agriculture
and Metro Vancouver Regional District.

Data Sources:
Pitt Meadows parcels provided by Metro
Vancouver – sourced from ICIS in 2010.
Land Cover captured August 2011.

Map produced by
Ministry of Agriculture
Sustainable Agriculture Management Branch
Strengthening Farming Program
1767 Angus Campbell Rd,
Abbotsford, BC V3G 2M3
604 556 3001

August 25, 2013

The Agricultural Land Use Inventory (ALUI)
System employs a “windshield” survey method
which captures data visible from publicly
accessible lands and roads. Where visibility
is limited, data may have been interpreted
from aerial photography, in combination with
local knowledge. This data represents a
snapshot in time of land cover and land use
on legal parcels. Legal parcel descriptions,
land use and land cover may have changed
since the dataset was collected. Using this
data to extrapolate farm management practices
or environmental impacts from individual
parcels is invalid. Please refer to the
2011 City of Pitt Meadows Land Use Inventory
Report for more information on data limitations.
(<http://www.al.gov.bc.ca/resmgmt/sf/gis/projects.htm>)

Pitt Meadows
Agricultural Land Use Inventory - 2011

Greenhouses & Crop Barns

Crop Type

- Nursery
- Unknown
- Floriculture
- Mixed
- Vegetables

Building Type

- Poly greenhouse
- Poly greenhouse, Unmaintained (only 1)
- Glass greenhouse
- Glass greenhouse, Unmaintained (only 1)

Municipality

- Boundaries (2010)

Agricultural Land Reserve

- Boundaries (2010)

Parcels

Survey Status

- Surveyed
- Not surveyed

Indian Reserves

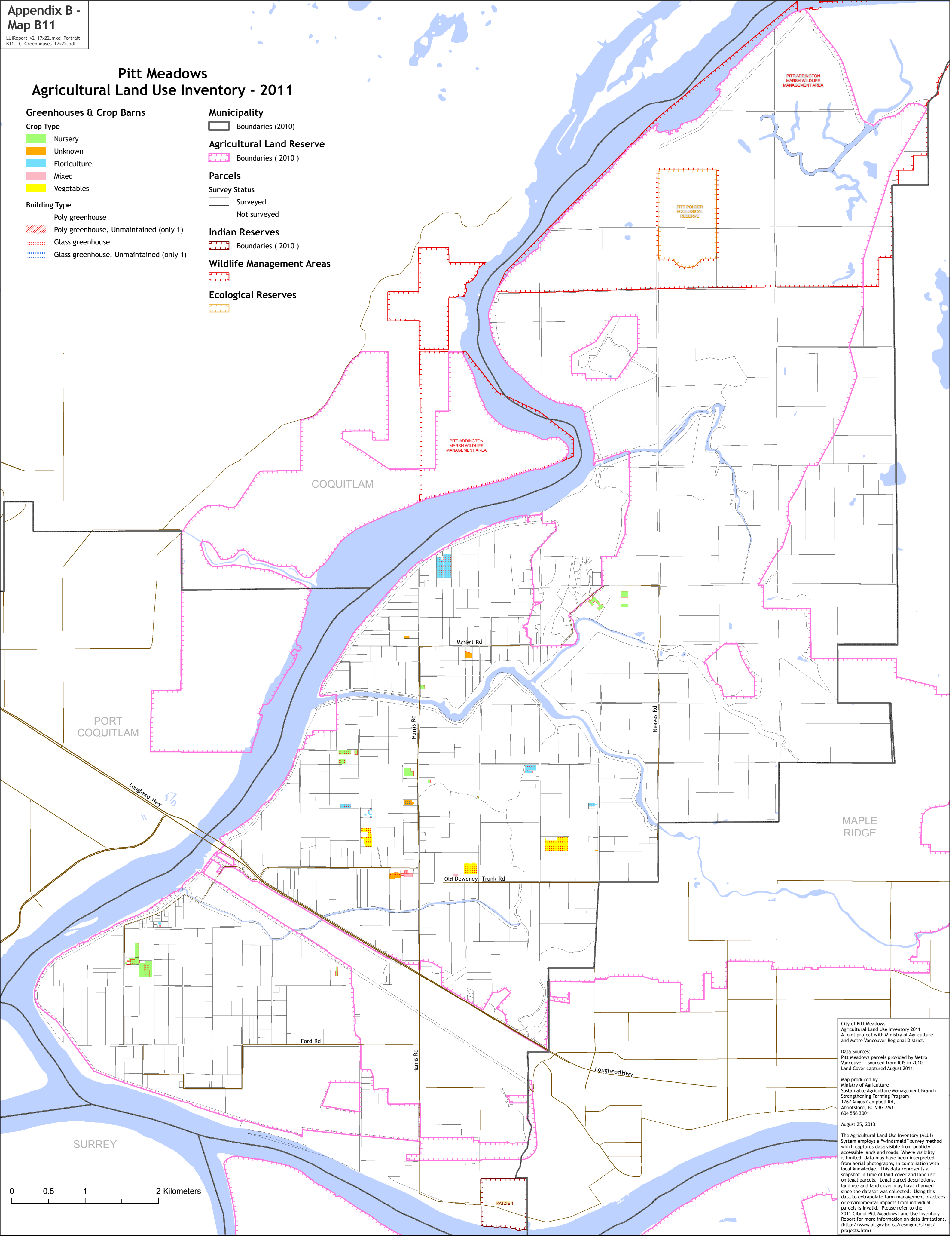
- Boundaries (2010)

Wildlife Management Areas

-

Ecological Reserves

-



City of Pitt Meadows
Agricultural Land Use Inventory 2011
A joint project with Ministry of Agriculture
and Metro Vancouver Regional District.

Data Sources:
Pitt Meadows parcels provided by Metro
Vancouver – sourced from ICIS in 2010.
Land Cover captured August 2011.

Map produced by
Ministry of Agriculture
Sustainable Agriculture Management Branch
Strengthening Farming Program
1767 Angus Campbell Rd,
Abbotsford, BC V3G 2M3
604 556 3001

August 25, 2013

The Agricultural Land Use Inventory (ALUI)
System employs a “windshield” survey method
which captures data visible from publicly
accessible lands and roads. Where visibility
is limited, data may have been interpreted
from aerial photography, in combination with
local knowledge. This data represents a
snapshot in time of land cover and land use
on legal parcels. Legal parcel descriptions,
land use and land cover may have changed
since the dataset was collected. Using this
data to extrapolate farm management practices
or environmental impacts from individual
parcels is invalid. Please refer to the
2011 City of Pitt Meadows Land Use Inventory
Report for more information on data limitations.
(<http://www.al.gov.bc.ca/resmgmt/sf/gis/projects.htm>)

Pitt Meadows
Agricultural Land Use Inventory - 2011

Irrigation

Cultivated Field Crops

- Trickle
- Sprinkler
- Giant gun (only 3)

Greenhouses

- Flood and trickle

Municipality

- Boundaries (2010)

Agricultural Land Reserve

- Boundaries (2010)

Parcels

Survey Status

- Surveyed
- Not surveyed

Indian Reserves

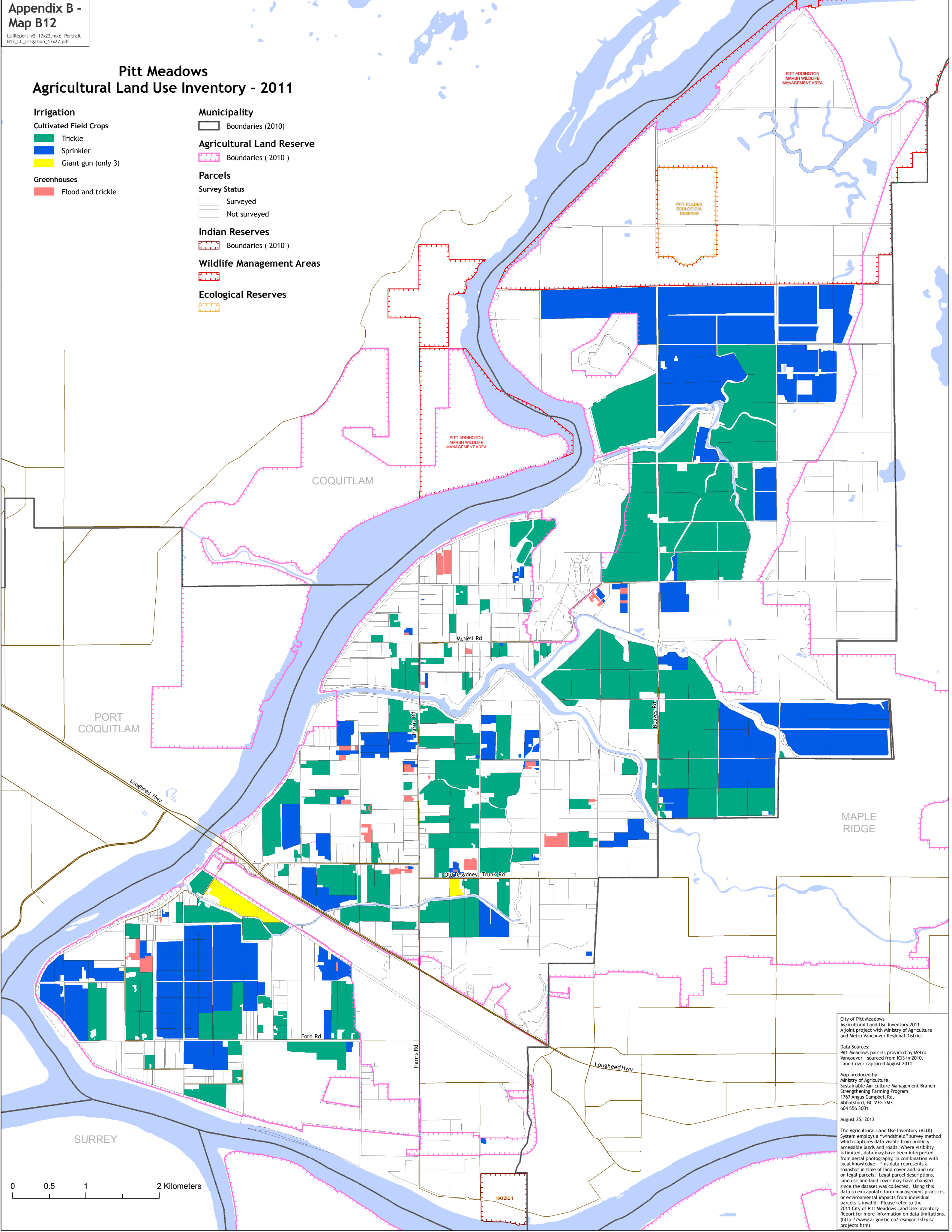
- Boundaries (2010)

Wildlife Management Areas

-

Ecological Reserves

-



City of Pitt Meadows
Agricultural Land Use Inventory 2011
A joint project with Ministry of Agriculture
and Metro Vancouver Regional District.

Data Sources:
Pitt Meadows parcels provided by Metro
Vancouver - sourced from ICIS in 2010.
Land Cover captured August 2011.

Map produced by
Ministry of Agriculture
Sustainable Agriculture Management Branch
Strengthening Farming Program
1767 Angus Campbell Rd,
Abbotsford, BC V3G 2M3
604 556 3001

August 25, 2013

The Agricultural Land Use Inventory (ALUI)
System employs a "windshield" survey method
which captures data visible from publicly
accessible lands and roads. Where visibility
is limited, data may have been interpreted
from aerial photography, in combination with
local knowledge. This data represents a
snapshot in time of land cover and land use
on legal parcels. Legal parcel descriptions,
land use and land cover may have changed
since the dataset was collected. Using this
data to extrapolate farm management practices
or environmental impacts from individual
parcels is invalid. Please refer to the
2011 City of Pitt Meadows Land Use Inventory
Report for more information on data limitations.
(<http://www.al.gov.bc.ca/resmgmt/sf/gis/projects.htm>)

Pitt Meadows
Agricultural Land Use Inventory - 2011

Livestock - Beef

- Small scale (2 -25 cattle) - Non intensive
- Large scale (>100 cattle) - Intensive

Livestock - Dairy

- Medium scale (25 - 100 cattle) - Intensive
- Large scale (>100 cattle) - Intensive

Livestock - Poultry

- Very small scale (<100 chickens) - Non intensive

Livestock - Sheep / lamb / goats

- Very small scale (< 5 goats or 10 Sheep) - Non intensive
- Small scale(5 - 125 goats or 10 - 250 sheep) - Non intensive

Livestock - Unknown type

- Very small scale (< 2 animal unit equivalents) - Non intensive
- Small scale(2 -25 animal unit equivalents) - Non intensive

Livestock - Equine

- Very small scale - Non intensive (1 equine)
- Small scale - Non intensive (2 - 25 equines)
- Medium scale - Non intensive (25 - 100 equines)

Municipality

- Boundaries (2010)

Agricultural Land Reserve

- Boundaries (2010)

Parcels

- Surveyed
- Not surveyed

Indian Reserves

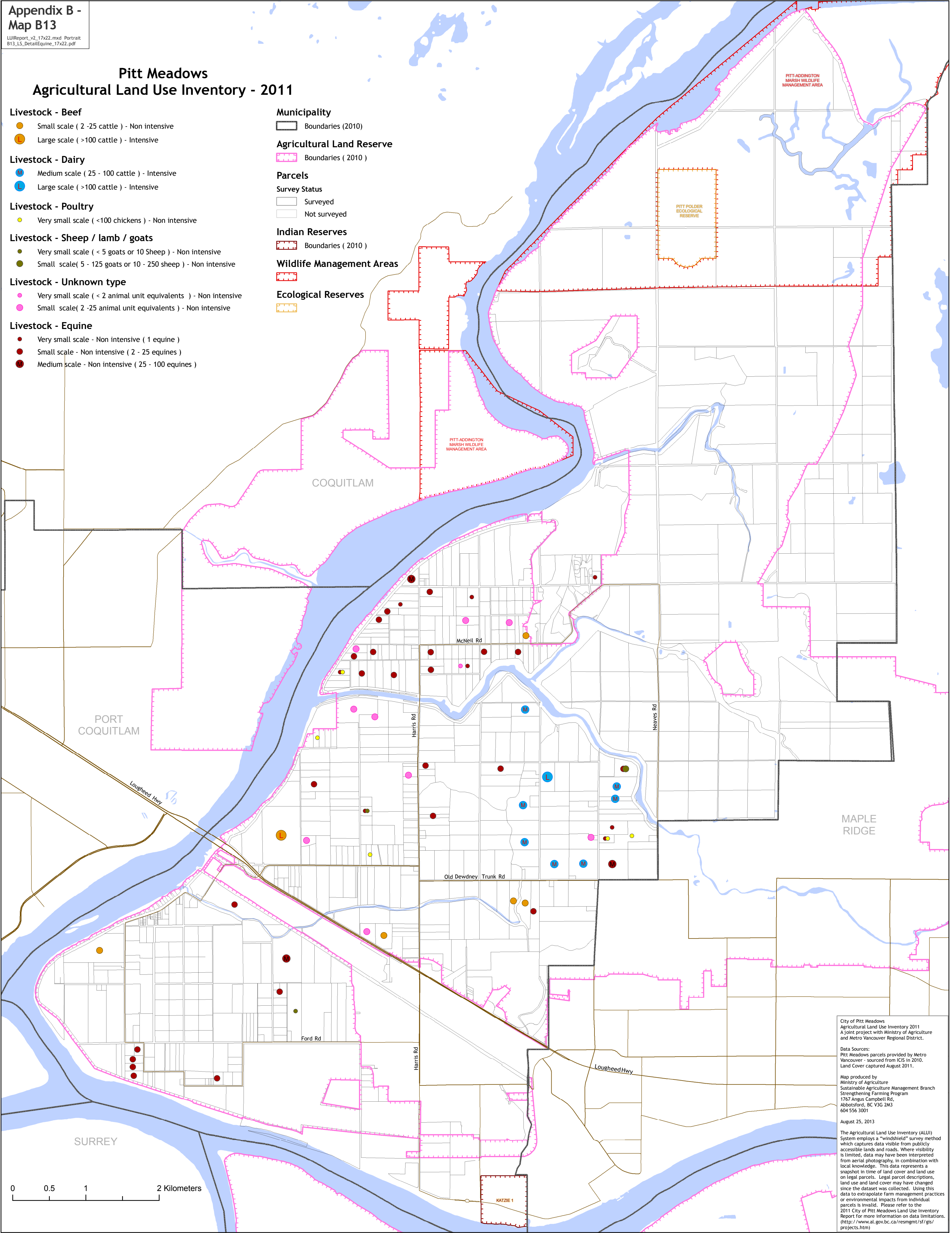
- Boundaries (2010)

Wildlife Management Areas

-

Ecological Reserves

-



City of Pitt Meadows
Agricultural Land Use Inventory 2011
A joint project with Ministry of Agriculture
and Metro Vancouver Regional District.

Data Sources:
Pitt Meadows parcels provided by Metro
Vancouver - sourced from ICIS in 2010.
Land Cover captured August 2011.

Map produced by
Ministry of Agriculture
Sustainable Agriculture Management Branch
Strengthening Farming Program
1767 Angus Campbell Rd,
Abbotsford, BC V3G 2M3
604 556 3001

August 25, 2013

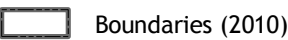
The Agricultural Land Use Inventory (ALUI)
System employs a "windshield" survey method
which captures data visible from publicly
accessible lands and roads. Where visibility
is limited, data may have been interpreted
from aerial photography, in combination with
local knowledge. This data represents a
snapshot in time of land cover and land use
on legal parcels. Legal parcel descriptions,
land use and land cover may have changed
since the dataset was collected. Using this
data to extrapolate farm management practices
or environmental impacts from individual
parcels is invalid. Please refer to the
2011 City of Pitt Meadows Land Use Inventory
Report for more information on data limitations.
(<http://www.al.gov.bc.ca/resmgmt/sf/gis/projects.htm>)

Pitt Meadows
Agricultural Land Use Inventory - 2011

Parcel Size Category (ha)



Municipality

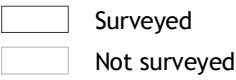


Agricultural Land Reserve

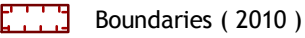


Parcels

Survey Status



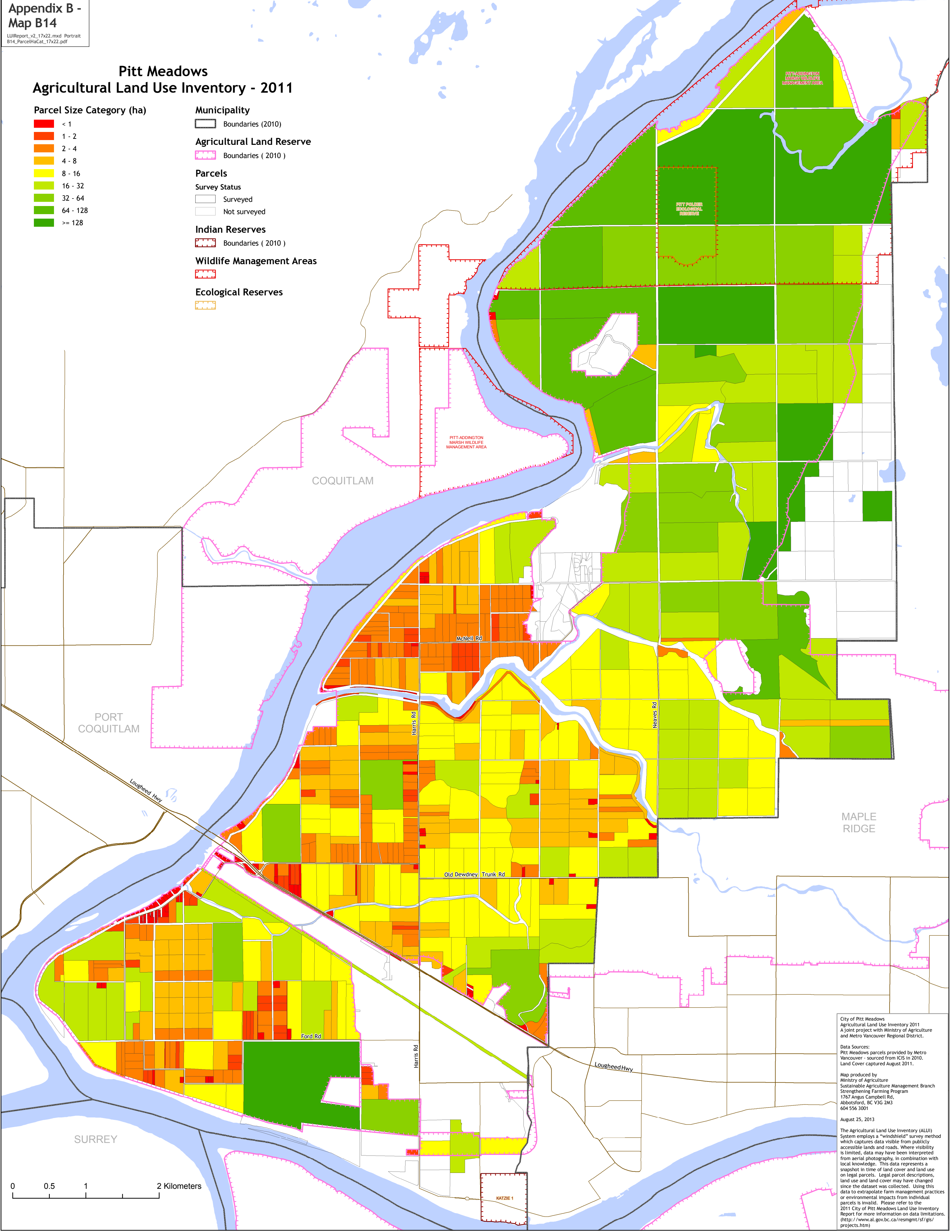
Indian Reserves



Wildlife Management Areas



Ecological Reserves



City of Pitt Meadows
Agricultural Land Use Inventory 2011
A joint project with Ministry of Agriculture
and Metro Vancouver Regional District.

Data Sources:
Pitt Meadows parcels provided by Metro
Vancouver - sourced from ICIS in 2010.
Land Cover captured August 2011.

Map produced by
Ministry of Agriculture
Sustainable Agriculture Management Branch
Strengthening Farming Program
1767 Angus Campbell Rd,
Abbotsford, BC V3G 2M3
604 556 3001

August 25, 2013

The Agricultural Land Use Inventory (ALUI)
System employs a "windshield" survey method
which captures data visible from publicly
accessible lands and roads. Where visibility
is limited, data may have been interpreted
from aerial photography, in combination with
local knowledge. This data represents a
snapshot in time of land cover and land use
on legal parcels. Legal parcel descriptions,
land use and land cover may have changed
since the dataset was collected. Using this
data to extrapolate farm management practices
or environmental impacts from individual
parcels is invalid. Please refer to the
2011 City of Pitt Meadows Land Use Inventory
Report for more information on data limitations.
(<http://www.al.gov.bc.ca/resmgmt/sf/gis/projects.htm>)