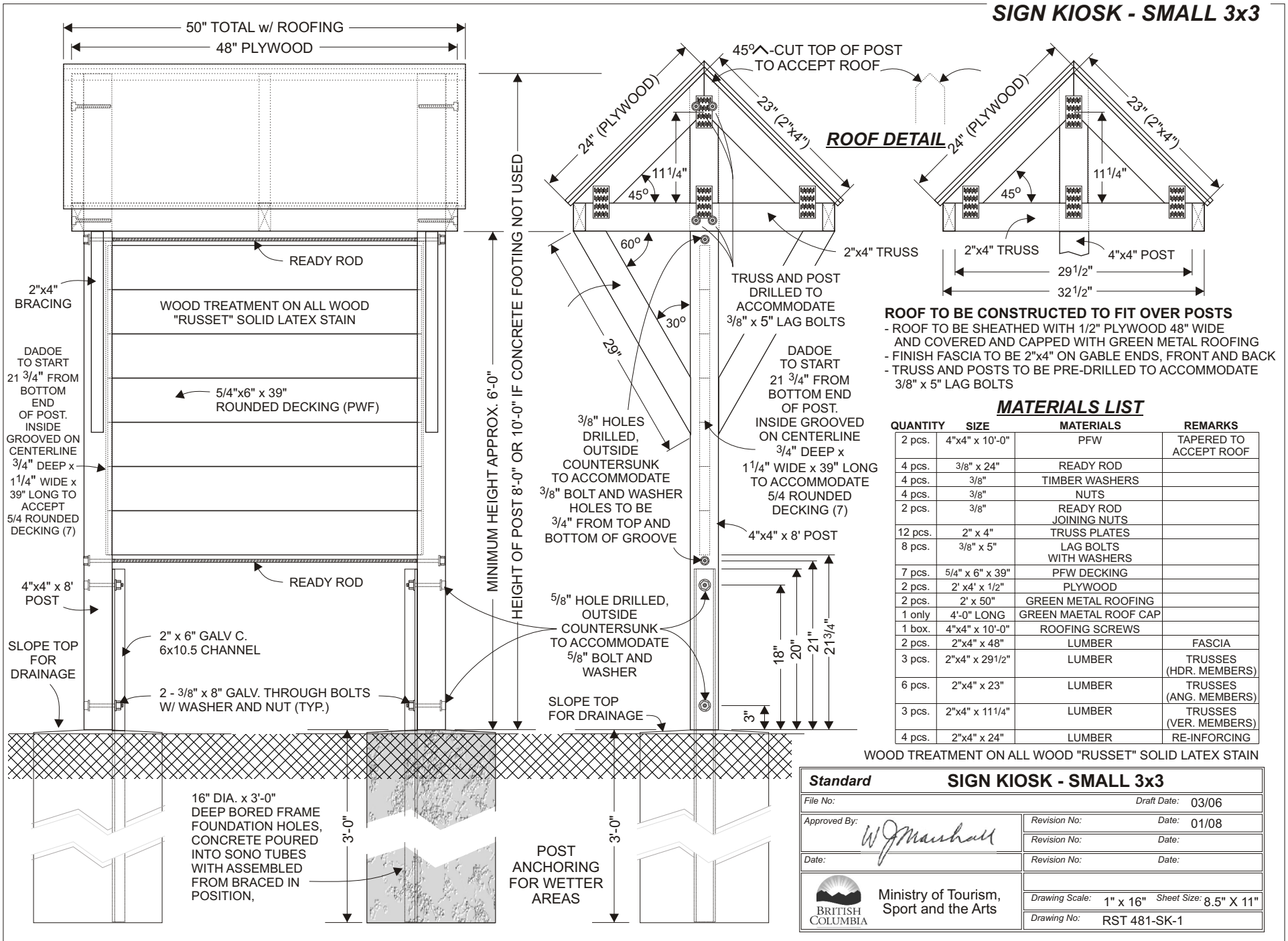


SIGN KIOSK - SMALL 3x3



ROOF TO BE CONSTRUCTED TO FIT OVER POSTS

- ROOF TO BE SHEATHED WITH 1/2" PLYWOOD 48" WIDE AND COVERED AND CAPPED WITH GREEN METAL ROOFING
- FINISH FASCIA TO BE 2"x4" ON GABLE ENDS, FRONT AND BACK
- TRUSS AND POSTS TO BE PRE-DRILLED TO ACCOMMODATE 3/8" x 5" LAG BOLTS

MATERIALS LIST

QUANTITY	SIZE	MATERIALS	REMARKS
2 pcs.	4"x4" x 10'-0"	PFW	TAPERED TO ACCEPT ROOF
4 pcs.	3/8" x 24"	READY ROD	
4 pcs.	3/8"	TIMBER WASHERS	
4 pcs.	3/8"	NUTS	
2 pcs.	3/8"	READY ROD JOINING NUTS	
12 pcs.	2" x 4"	TRUSS PLATES	
8 pcs.	3/8" x 5"	LAG BOLTS WITH WASHERS	
7 pcs.	5/4" x 6" x 39"	PFW DECKING	
2 pcs.	2' x 4" x 1/2"	PLYWOOD	
2 pcs.	2' x 50"	GREEN METAL ROOFING	
1 only	4'-0" LONG	GREEN METAL ROOF CAP	
1 box.	4"x4" x 10'-0"	ROOFING SCREWS	
2 pcs.	2"x4" x 48"	LUMBER	FASCIA
3 pcs.	2"x4" x 29 1/2"	LUMBER	TRUSSES (HDR. MEMBERS)
6 pcs.	2"x4" x 23"	LUMBER	TRUSSES (ANG. MEMBERS)
3 pcs.	2"x4" x 11 1/4"	LUMBER	TRUSSES (VER. MEMBERS)
4 pcs.	2"x4" x 24"	LUMBER	RE-INFORCING

Standard SIGN KIOSK - SMALL 3x3

File No: _____ Draft Date: 03/06

Approved By: *W. Marshall* Revision No: _____ Date: 01/08

Date: _____ Revision No: _____ Date: _____

Ministry of Tourism, Sport and the Arts

BRITISH COLUMBIA

Drawing Scale: 1" x 16" Sheet Size: 8.5" X 11"

Drawing No: RST 481-SK-1