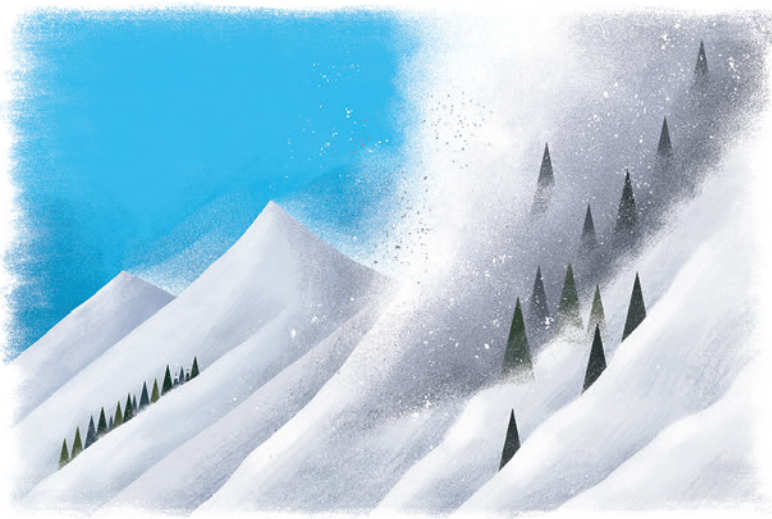




Know the risks



Avalanches:

Avalanches are caused by four factors: a slope, snow cover, a weak layer in the snow cover and a trigger. The trigger is usually a person – snowmobilers, climbers, snowboarders, snowshoers, skiers or hikers. Contrary to what you see in the movies, noise does not trigger avalanches!

Dry slab avalanches account for almost all avalanche fatalities. A slab avalanche is a cohesive chunk of snow sliding as a unit on top of weaker snow – imagine a dinner plate sliding off a table with the victim in the middle of the plate. Dry slab avalanches can travel up to 130 km/h and once the snow stops moving, it settles like concrete and makes movement for anyone trapped inside next to impossible.

WARNING SIGNS: There are usually no warning signs of an avalanche. Professional avalanche forecasters with Avalanche Canada issue daily avalanche forecasts throughout the winter. It's highly recommended that people check these forecasts before heading out into the mountainous regions and backcountry of B.C. If the avalanche risk is extremely high, Avalanche Canada may issue a Special Public Avalanche Warning.

For more information on avalanches and backcountry safety, visit [Know the Risks > Avalanches](#) on PreparedBC.