

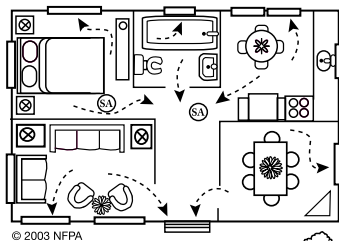


Home Fire Escape Plan

Memorize your fire department's emergency phone number and write it here: _____

Use the space below to create your home fire escape plan.

A large grid area for drawing a floor plan.



© 2003 NFPA

Meeting Place

- Draw a floor plan or a map of your home. Show all doors and windows.
- Mark two ways out of each room.
- Mark all of the smoke alarms with (SA). Smoke alarms should be in each sleeping room, outside each sleeping area, and on every level of the home.
- Pick a family meeting place outside where everyone can meet.
- Remember, practice your plan at least twice a year!



Check out www.sparky.org for fire safety games and activities. Sparky® is a trademark of NFPA.

Grown-ups: Children don't always awake when the smoke alarm sounds. Know what your child will do before a fire occurs. Get more information on smoke alarms and escape planning at www.nfpa.org/factsheets.