

This report summarizes all cases from 2006 to 2012 for which toxicological testing was positive for Methylenedioxymethamphetamine (MDMA, also known as Ecstasy), and for which the investigating coroner determined that MDMA was relevant to the death.

The BCCS operates in a live database environment. The data are considered preliminary until all investigations have been completed. Data are subject to change, and are not directly comparable to published counts from previous years.

### MDMA-Related Deaths, 2006-2012

Relevant to Death	2006	2007	2008	2009	2010	2011	*2012
Yes	7	13	23	21	18	13	5
Under Investigation*	-	-	-	-	-	1	6
<b>Total</b>	<b>7</b>	<b>13</b>	<b>23</b>	<b>21</b>	<b>18</b>	<b>14</b>	<b>11</b>

\* *Relevance of MDMA detected by toxicological testing is yet to be determined for cases which are under investigation*

### MDMA-Related Deaths by Classification, 2006-2012

Classification	2006	2007	2008	2009	2010	2011	*2012	%
Accidental	7	12	21	19	15	13	8	88.8
Natural	-	1	1	-	1	-	-	2.8
Suicide	-	-	1	1	1	1	-	3.7
Undetermined	-	-	-	1	1	-	3	4.7
<b>Total</b>	<b>7</b>	<b>13</b>	<b>23</b>	<b>21</b>	<b>18</b>	<b>14</b>	<b>11</b>	<b>100</b>

### MDMA-Related Deaths by Means of Death, 2006-2012

Means of Death	2006	2007	2008	2009	2010	2011	2012	%
Drug Overdose*	3	7	11	16	13	13	11	69.2
Motor Vehicle Incident	3	2	7	3	1	-	-	15.0
Fall	-	2	3	-	3	1	-	8.4
Natural Disease	-	1	1	-	1	-	-	2.8
Drowning	-	-	1	1	-	-	-	1.9
Poisoning: CO (Vehicle Exhaust)	1	-	-	-	-	-	-	0.9
Railway Incident	-	-	-	1	-	-	-	0.9
Aspiration	-	1	-	-	-	-	-	0.9
<b>Total</b>	<b>7</b>	<b>13</b>	<b>23</b>	<b>21</b>	<b>18</b>	<b>14</b>	<b>11</b>	<b>100</b>

\* May involve multiple drug types and/or alcohol

### MDMA-Related Drug Overdose Deaths by Drug Type, 2006-2012

Drug Type*	2006	2007	2008	2009	2010	2011	2012	%
Ecstasy and other drugs	1	4	6	7	5	7	3	44.6
Ecstasy only	2	2	3	4	3	3	1	24.3
Ecstasy, alcohol, and other drugs	-	1	2	3	5	2	1	18.9
Ecstasy and alcohol	-	-	-	2	-	-	-	2.7
Under investigation	-	-	-	-	-	1	6	9.5
<b>Total</b>	<b>3</b>	<b>7</b>	<b>11</b>	<b>16</b>	<b>13</b>	<b>13</b>	<b>11</b>	<b>100</b>

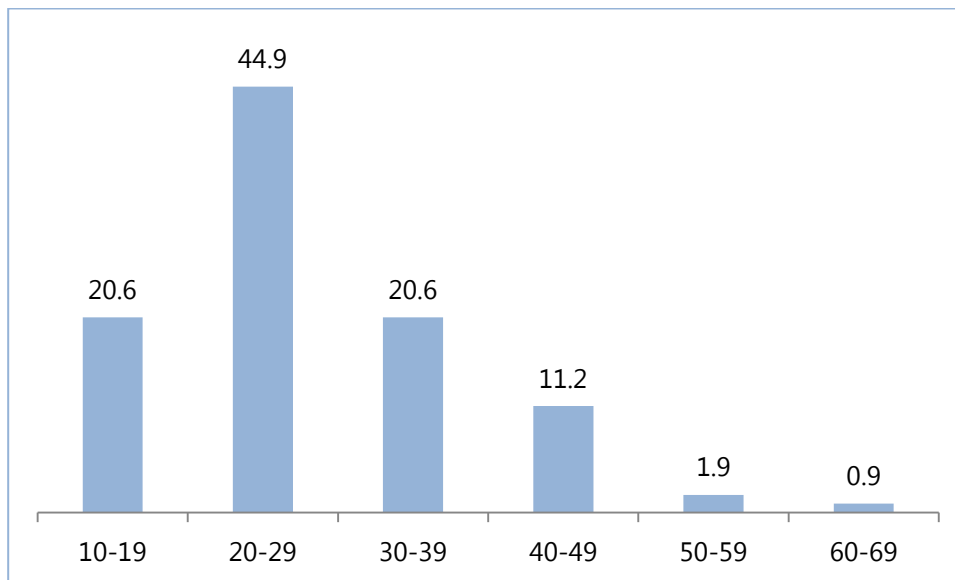
\* Ecstasy may include MDMA alone or in combination with MDA or PMMA

### MDMA-Related Deaths by Region, 2006-2012

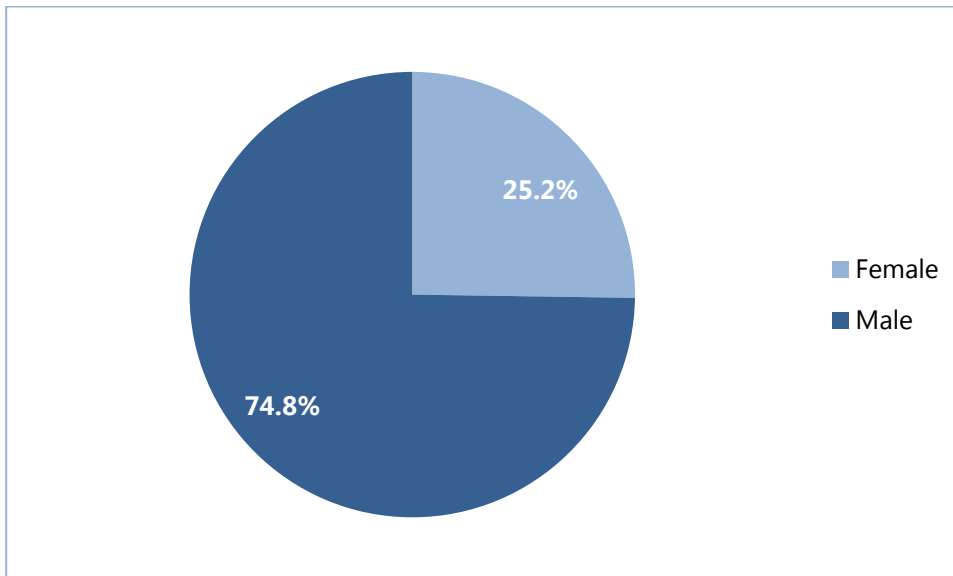
Region	2006	2007	2008	2009	2010	2011	2012	%
Fraser	5	5	7	2	6	4	4	30.8
Interior	-	3	1	5	5	3	1	16.8
Island	1	2	1	5	4	2	1	15.0
Metro	-	3	11	6	3	5	5	30.8
Northern	1	-	3	3	-	-	-	6.5
<b>Total</b>	<b>7</b>	<b>13</b>	<b>23</b>	<b>21</b>	<b>18</b>	<b>14</b>	<b>11</b>	<b>100</b>

### MDMA-Related Deaths by Gender and Age Group, 2006-2012

Gender	Age Group	2006	2007	2008	2009	2010	2011	2012	%
Female	10-19	1	1	3	2	1	1	-	33.3
	20-29	-	3	5	1	-	1	4	51.9
	30-39	-	1	1	-	-	-	2	14.8
	Subtotal	1	5	9	3	1	2	6	100
Male	10-19	3	1	2	3	1	2	1	16.3
	20-29	2	5	2	9	9	4	3	42.5
	30-39	-	2	6	3	3	3	1	22.5
	40-49	1	-	4	3	2	2	-	15.0
	50-59	-	-	-	-	2	-	-	2.5
	60-69	-	-	-	-	-	1	-	1.3
	Subtotal	6	8	14	18	17	12	5	100
<b>Total</b>		<b>7</b>	<b>13</b>	<b>23</b>	<b>21</b>	<b>18</b>	<b>14</b>	<b>11</b>	



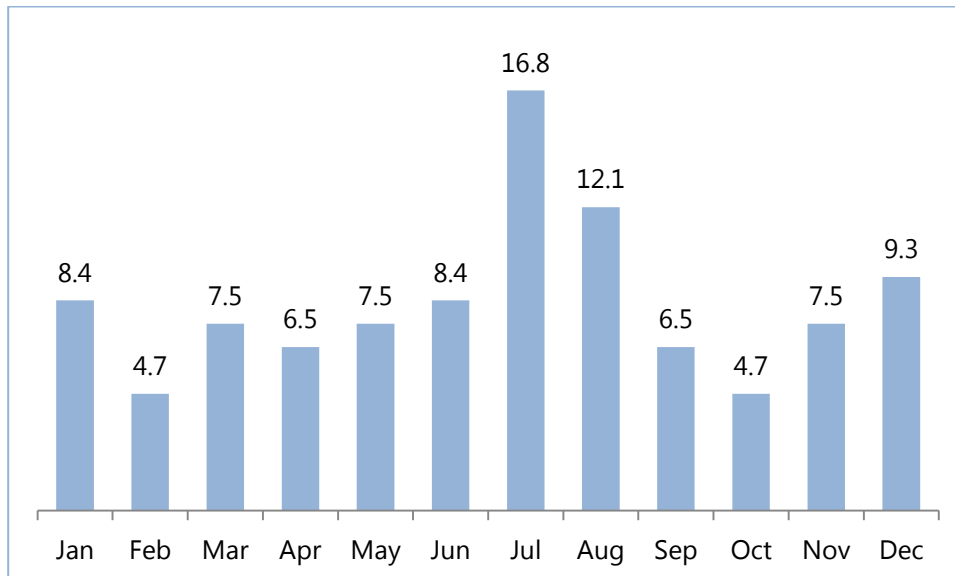
Percentage of MDMA-Related Deaths by Age Group, 2006-2012



Percentage of MDMA-Related Deaths by Gender, 2006-2012

### MDMA-Related Deaths by Month, 2006-2012

Month	2006	2007	2008	2009	2010	2011	2012
January	-	1	2	3	1	-	2
February	-	1	-	-	2	1	1
March	1	2	1	1	3	-	-
April	1	1	1	1	1	1	1
May	1	1	2	3	1	-	-
June	1	1	3	-	1	2	1
July	2	2	6	1	2	3	2
August	-	-	2	7	2	1	1
September	-	1	1	1	3	1	-
October	1	-	1	2	-	-	1
November	-	2	2	1	-	3	-
December	-	1	2	1	2	2	2
<b>Total</b>	<b>7</b>	<b>13</b>	<b>23</b>	<b>21</b>	<b>18</b>	<b>14</b>	<b>11</b>



Percentage of MDMA-Related Deaths by Month, 2006-2012

### MDMA-Related Deaths by Township\*, 2006-2012

Township	Deaths
Vancouver	26
Surrey	11
Victoria	6
Langley	5
Mission	5
Burnaby	4
Kamloops	4
Vernon	4
Prince George	3
Other	39
<b>Total</b>	<b>107</b>

\* Townships with fewer than three deaths for 2006 to 2012 are grouped under "Other"