

Modernized Reference Drug Program

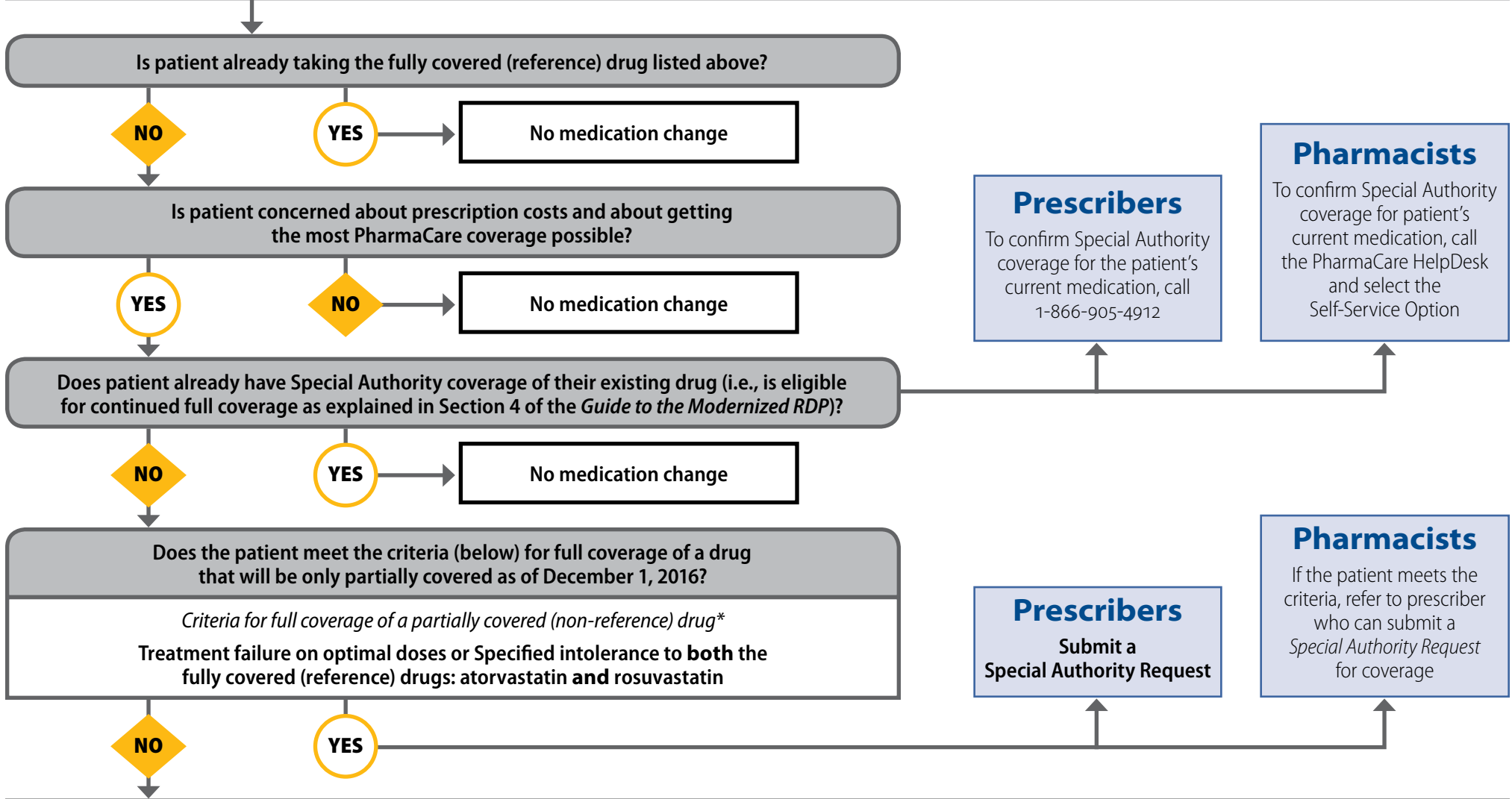
HMG-CoA Reductase Inhibitors (Statins)



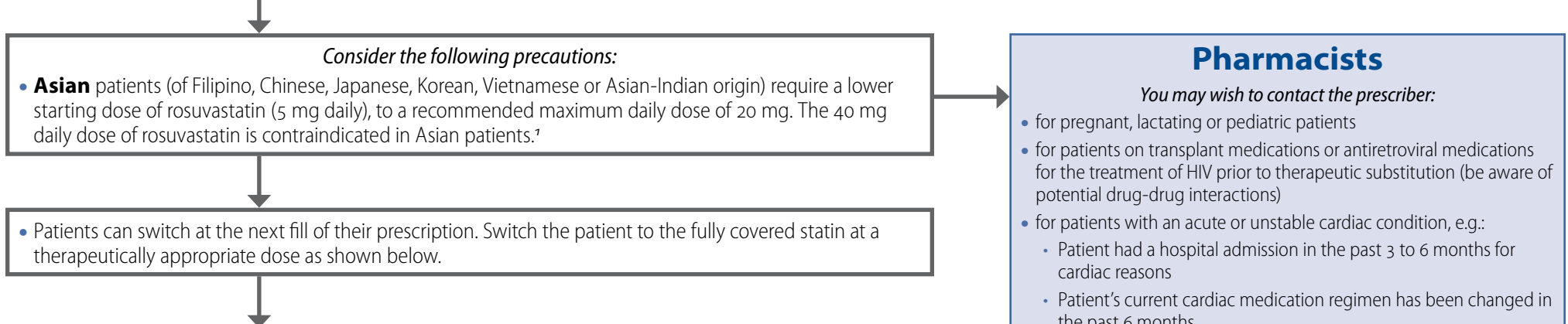
| Fully Covered (Reference Drugs) | | Partially Covered (Non-Reference Drugs) | | | |
|---------------------------------|----------------|---|--------------|---------------|---------------|
| • Atorvastatin | • Rosuvastatin | • Fluvastatin | • Lovastatin | • Pravastatin | • Simvastatin |

Information provided is not intended as a substitute for professional judgement.

Step 1 – Does your patient need to switch medications to retain PharmaCare coverage?



Step 2 – Making the switch

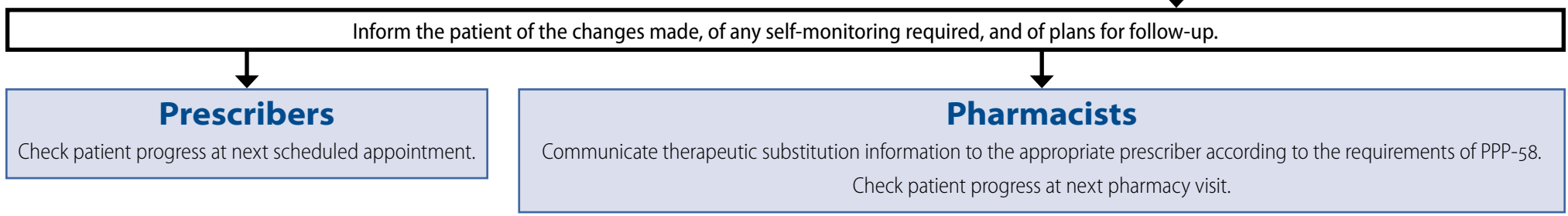


| Recommended doses of statins ^{1,2} | | |
|--|---|--|
| Indication | • Atorvastatin | • Rosuvastatin |
| Hypercholesterolemias (Doses vary, use equipotent doses) | • 10 mg to 80 mg daily | • 5 mg to 40 mg daily |
| Renal Impairment | • CrCl < 30 mL/min: Use cautiously and at lowest dosage | • CrCl < 30 mL/min: Initial dose 5 mg daily, maximum 10 mg daily |
| Hepatic Impairment | • Contraindicated in active liver disease | • Severe hepatic impairment: Maximum 20 mg daily. • Contraindicated in active liver disease |
| Race | | Asian patients: • Initial dose: 5 mg per day • Maximum dose: 20 mg per day • Contraindicated: 40 mg per day |

Refer to product monograph for recommended starting doses and additional dosing information.

| Drug | Approximate Potency (% LDL lowering) ³ | | | |
|----------------|---|----------------------------------|----------------|----------------------------------|
| • Atorvastatin | 10 mg (35-39%) | 20 mg (43%) | 40 mg (50%) | 80 mg (55-60%) |
| • Rosuvastatin | 5 mg (45%) | 5 mg (45%) | 10 mg (46-49%) | 20 mg (50-55%) 40 mg (55-63%) |
| • Fluvastatin | 20 mg (22%) 40 mg (25%) | 80 mg (35%) | | |
| • Lovastatin | 10 mg (21%) 20 mg (24-27%) | 40 mg (30-31%) 80 mg (40-42%) | 80 mg (40-42%) | |
| • Pravastatin | 10 mg (22%) 20 mg (29%) | 40 mg (34%) 80 mg (37%) | 80 mg (37%) | |
| • Simvastatin | 5 mg (26%) 10 mg (29%) | 20 mg (38%) | 40 mg (30-41%) | 80 mg (36-47%) |

Health Canada issued a safety warning regarding the 80 mg dose due to increased risk of myopathy and rhabdomyolysis



¹ CPS [Internet]. Ottawa (ON): Canadian Pharmacists Association; c2016 [updated 2015 Apr; cited 2016 Apr 25]. Crestor [product monograph]. Available from www.e-therapeutics.ca. Also available in paper copy from the publisher.
² CPS [Internet]. Ottawa (ON): Canadian Pharmacists Association; c2016 [updated 2016 Feb; cited 2016 Apr 25]. Lipitor [product monograph]. Available from www.e-therapeutics.ca. Also available in paper copy from the publisher.
³ Characteristics of Various Statins. Pharmacist's Letter/Prescriber's Letter. May 2012 (full update Nov 2013). 280502.