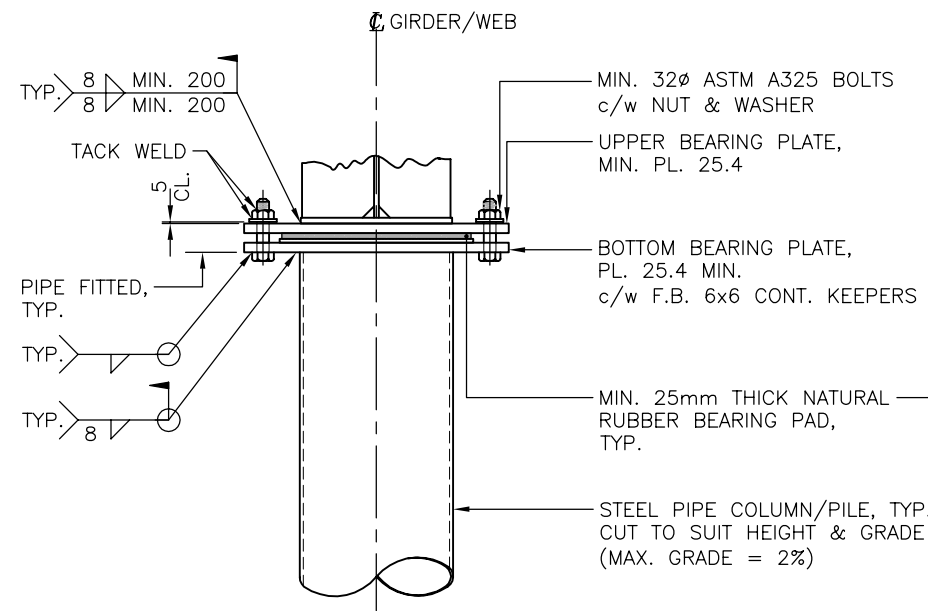
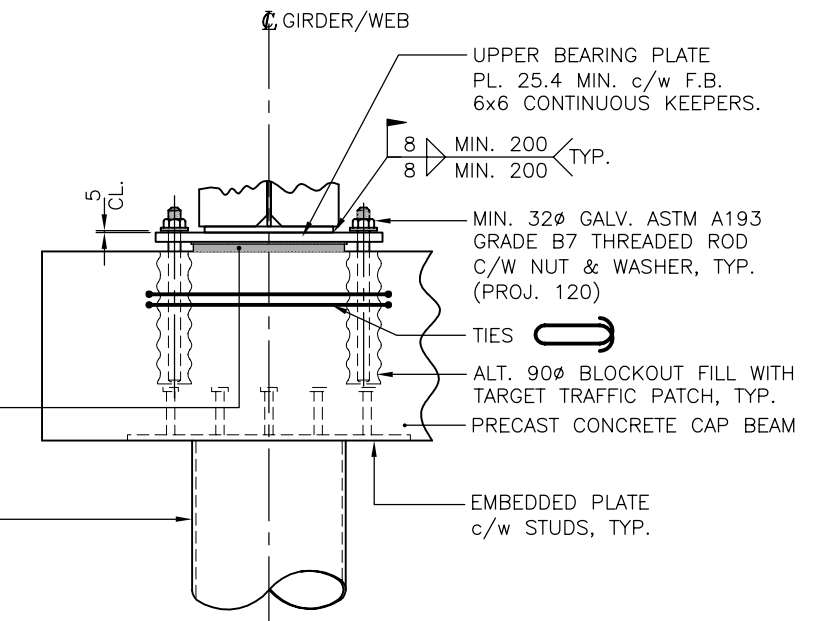


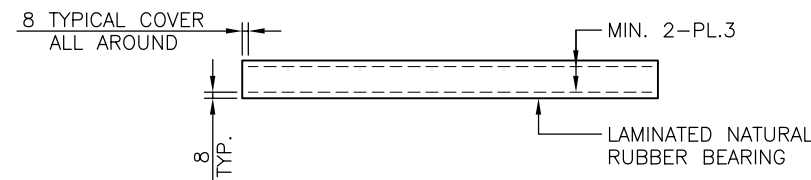
**ABUTMENT ELEVATION DETAIL**  
1:50



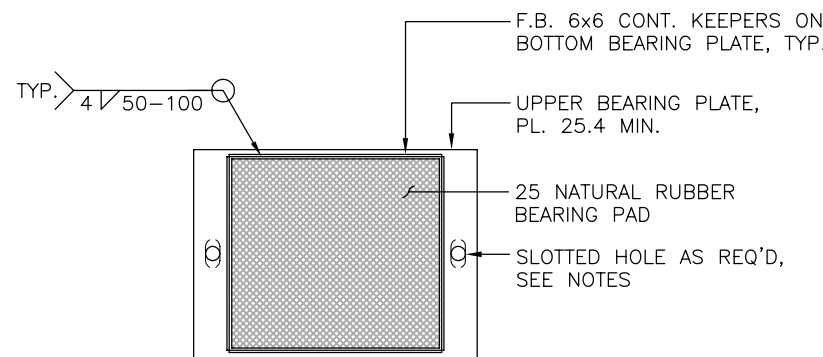
**BEARING DETAIL**  
1:20



**BEARING ON CONCRETE CAP DETAIL**  
1:20



**CONCEPTUAL LAMINATED BEARING PAD**  
1:10  
(WHERE SPECIFIED BY ENGINEER)

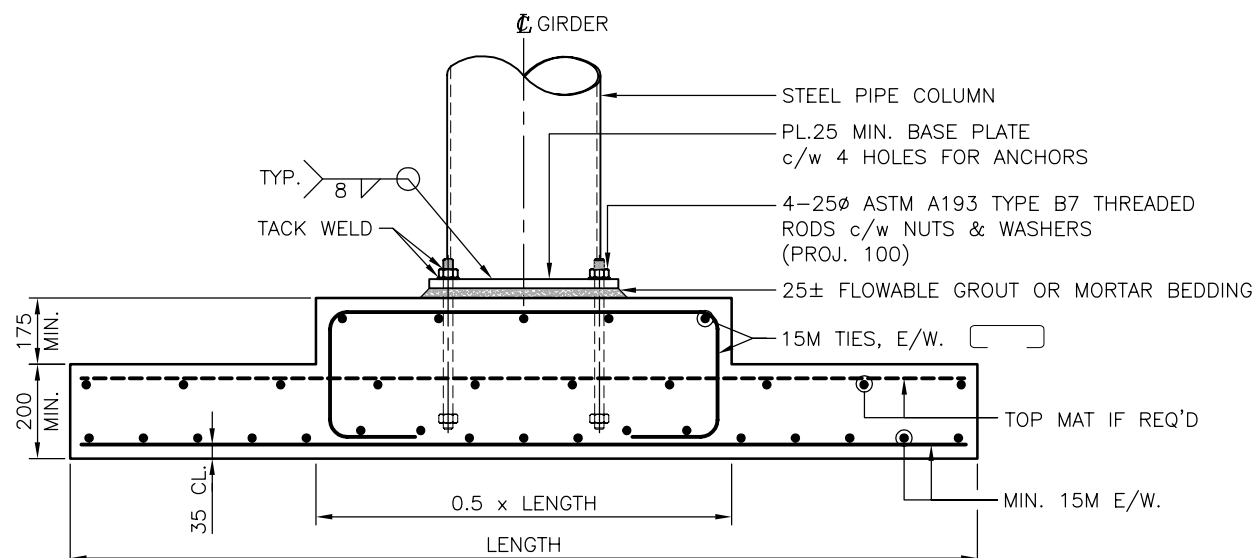


**BEARING PLAN**  
1:20

ASSUME NOT TO SCALE  
ORIGINAL SIGNED AND SEALED

**NOTES:**

1. ACCOMMODATE GRADES IN EXCESS OF 2% WITH A BEVEL PLATE OR SLOPED CAP BEAM.
2. FOR SINGLE SPAN BRIDGE WITH OVERALL LENGTH LESS THAN 40m (130'), ACCOMMODATE LONGITUDINAL SUPERSTRUCTURE DEFORMATIONS THROUGH THE USE OF SLOTTED HOLES. AS A MINIMUM PROVIDE THE FOLLOWING:
  - a. OVERALL LENGTH < 24m (80') SLOTTED HOLES AT ONE ABUTMENT
  - b. 24m (80') <= OVERALL LENGTH <= 40m (130') SLOTTED HOLES AT BOTH ABUTMENTS.
  - c. OVERALL LENGTH > 40m (130') BEARING SHALL BE AS SPECIFIED BY THE ENGINEER TO ACCOMMODATE ANTICIPATED DEFORMATIONS AND TRANSLATIONS.
3. THE DESIGN DRAWINGS SHOULD INCLUDE THE MAXIMUM APPLIED SERVICEABILITY LIMIT STATE COMBINATION 1 AND ULTIMATE LIMIT STATE STRESS FOR PRECAST CONCRETE FOOTINGS AND SERVICEABILITY LIMIT STATE COMBINATION 1 AND ULTIMATE LIMIT STATE LOADS FOR DRIVEN PILES.



**PRECAST CONCRETE FOOTING DETAIL**  
1:20

DESIGN ENGINEER	0 2 4 6 8 10 meters				SCALE AS SHOWN
	0 20 40 mm				
BAR LENGTH IS 40mm ON ORIGINAL.					
Checked JULIEN HENLEY Date 14/04/01					
Drawn ERFUN FARJOO Date 14/04/01					
Rev	Date	DESCRIPTION	Init		
1	15/03/31	REVISED NOTES & ADDED SLOTTED HOLES			
REVISIONS					
PROFESSIONAL SEAL					

Ministry of Forests, Lands and Natural Resource Operations ENGINEERING BRANCH	
<b>STANDARD BRIDGE DRAWING</b>	
DRAWING TITLE: CONCEPTUAL SUBSTRUCTURE DETAILS FOR STEEL BRIDGES	
DESIGNED BY: <b>HELEN DU, P.ENG.</b>	APPROVED BY:
COORDINATING REGISTERED PROFESSIONAL:	FLNR ENGINEER:
FILE No.	DRAWING No. <b>STD-EC-050-05</b>