

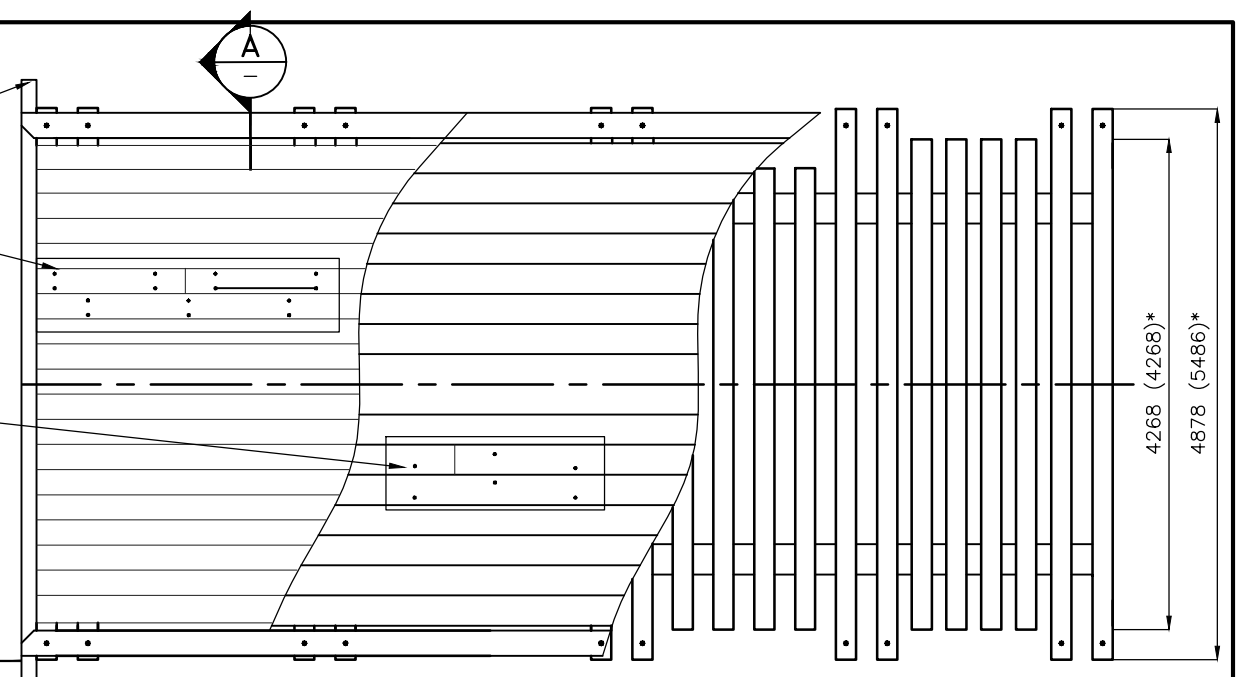
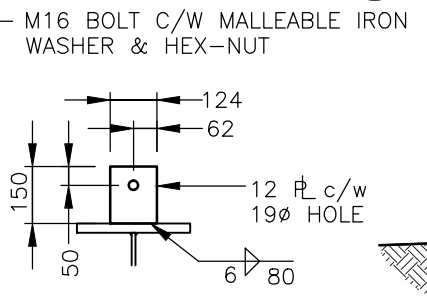
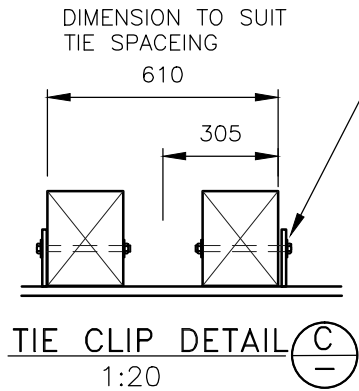
A TYPICAL END DIAPHRAGM/DECK SECTION
1:25

- GUARD RAILS SHALL ONLY BE BOLTED TO TIES THAT ARE BOLTED TO GIRDERS
- ALL TIMBER CROSS TIES TO BE INSTALLED WITH LONG SIDES VERTICAL
- DECK PLANK BUTT JOINTS SHALL BE CENTERED ON CROSS TIES. JOINTS IN ADJACENT LINES OF PLANKS SHALL BE STAGGERED A MINIMUM OF 2 TIE SPACES

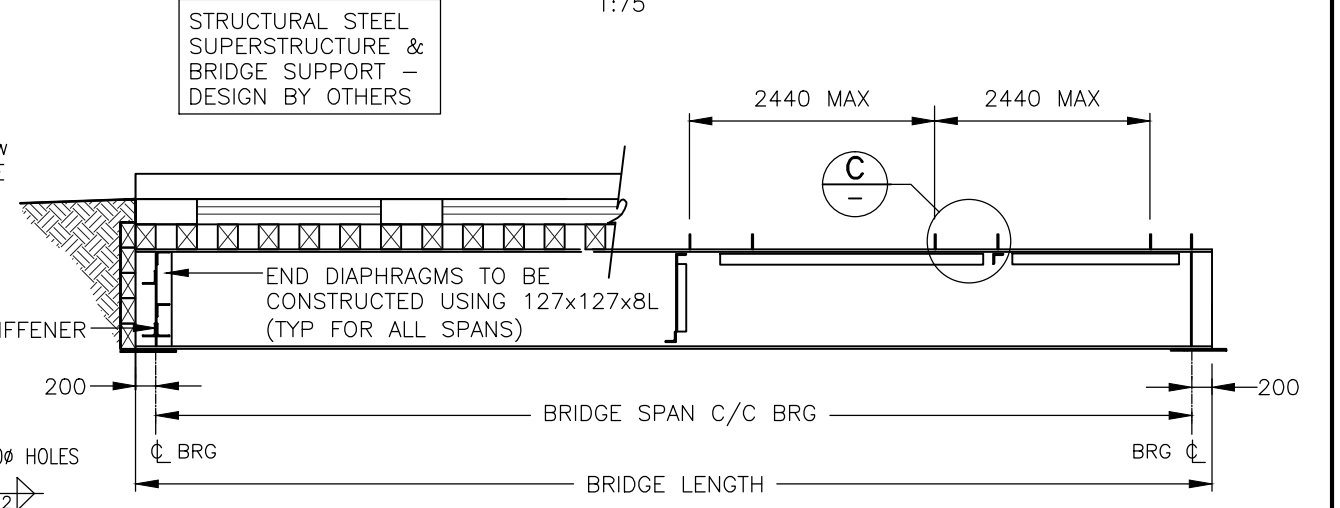
FOR PORTABLE BRIDGES BALLAST WALLS TO BE 150x300x6000 TREATED TIMBER BOLTED TO GIRDER END P's UNLESS SPECIFIED OTHERWISE.

- WEAR PLANKS NAILING PATTERN:
- WEAR PLANKS TO DECK PLANKS
 - 150mm GALV. COMMON SPIKES
 - 2@150 APART 300 FROM ENDS
 - 2@150 APART @ +/- 1000mm O/C TYPICAL

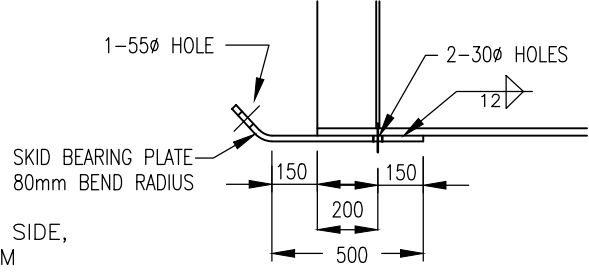
- DECK PLANKS NAILING PATTERN:
- DECK PLANKS TO CROSS-TIES
 - 200mm GALV. COMMON SPIKES
 - 1 SPIKE, CENTERED ON PLANK AND TIE AT EACH END; PRE-DRILL (6mm) TO PREVENT SPLITTING
 - 1 SPIKE EVERY TIE, STAGGERED SIDE TO SIDE @ 150 APART



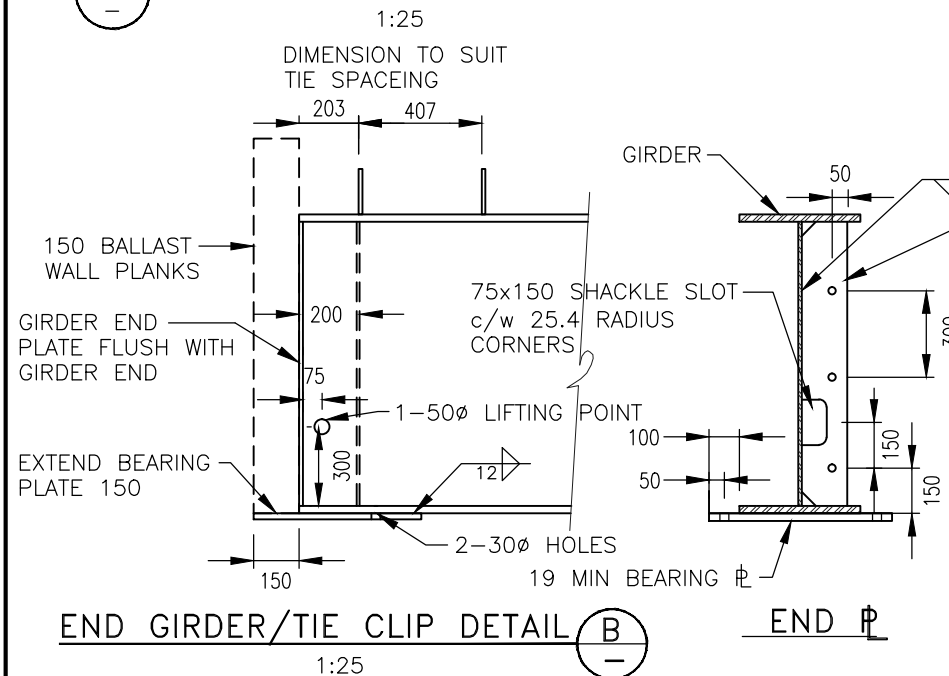
DECK PLAN
1:75



TYPICAL ELEVATION
1:75



OPTIONAL SKID PLATE BEARING DETAIL
1:25



END GIRDER/TIE CLIP DETAIL (B)
1:25

BRITISH COLUMBIA
MINISTRY OF FORESTS, LANDS AND NATURAL RESOURCE OPERATIONS
ENGINEERING BRANCH

STANDARD BRIDGE DRAWING

PORTABLE, CONTINUOUS TIMBER DECK BRIDGE
GENERAL ARRANGEMENT

SCALE AS SHOWN
Designed: ABS Date 2012/03/12
Checked: LT Date 2012/03/20
Drawn: ABS Date 2012/03/12

ORIGINAL SIGNED and SEALED BY:
A.B. SWAN, PEng

DESIGN ENGINEER: A.B. SWAN P.ENG
DATE: MARCH 26, 2012

MFR ENGINEER:
DATE

APPROVED BY: BRIAN CHOW, P.ENG, CHIEF ENGINEER
DATE:

FILE No. DRAWING No.
STD-EC-020-04

Rev	Date	DESCRIPTION	Init
-	-	-	-

REVISIONS