

Road, Utility, Telecommunications [ie hydro line], Water Power

(Oct. 21/2002)

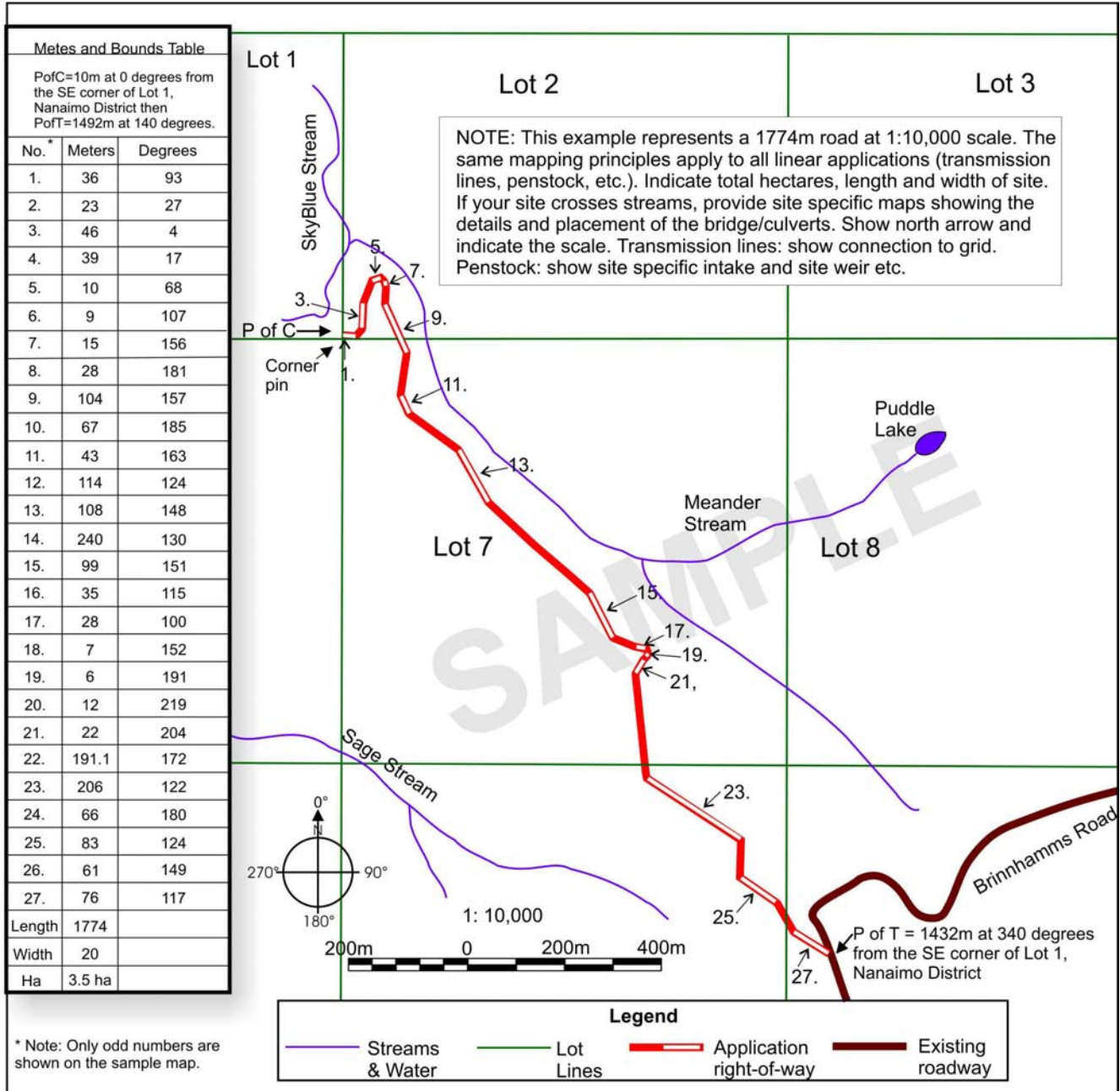
Mapping Requirements

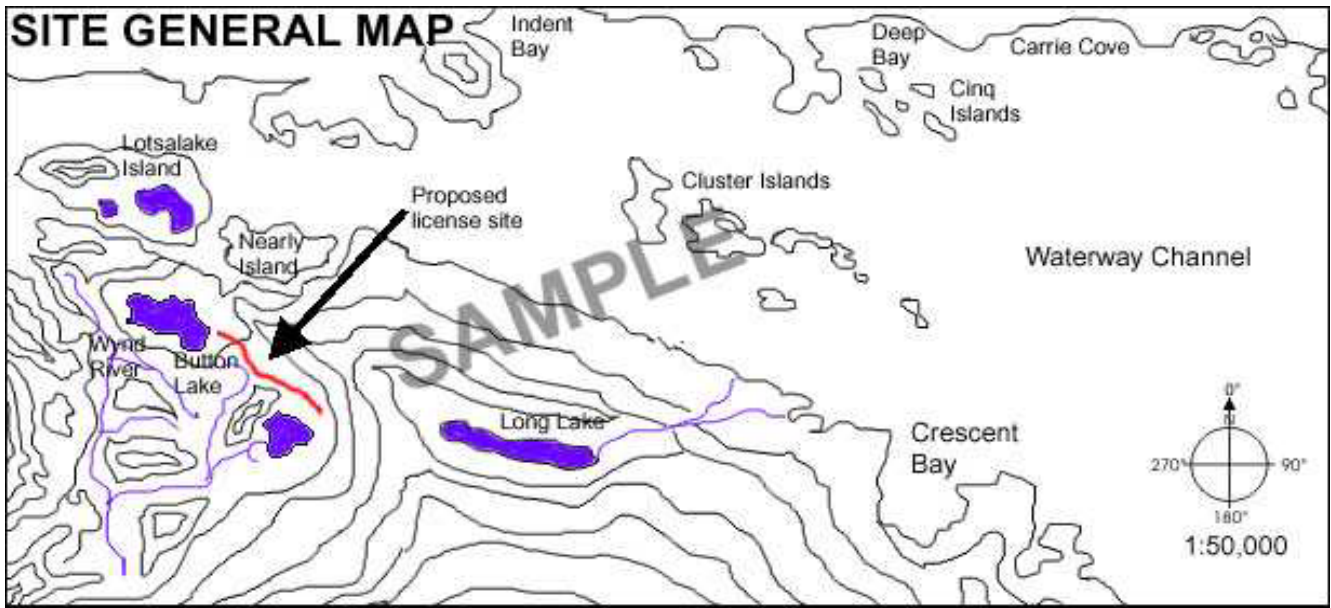
Provide a **Site Specific map** and **Site General map** on 8 ½" x 11" or 8 ½" x 14" or 11" x 17" paper only.

Submit a **Site General** map at 1:20,000 scale. The purpose of this map is to indicate the general location of the site. If the application area crosses a privately held surveyed lot, provide to scale a copy of the Survey Plan and identify the boundaries of the private land on your map. A **Site Specific map** [Management Plan] is a detailed version of the Site General map showing the boundary lines [noting metes and bounds] at a scale [i.e. 1:2,000, 1:5,000, 1:10,000 scale] showing the location of all improvements [i.e. storage areas for machinery during the building process, any bridges or culverts crossing streams etc.] within the application area. If the application site crosses a stream provide side view of the culverts, bridges etc.]. The metes and bounds for the site can be provided in table format as indicated in the Site Specific sample map. The Point of Commencement for the application area must be tied to a known point such as a geographic land feature or a corner pin of a surveyed lot that must be shown on your map and identifiable on our reference maps. Please contact our office if you would like to purchase a 1:20,000 map sheet of the application site. **Applications with incomplete mapping will be returned.**

This site map is of a road however the same mapping principles apply to any liner application. Below is a second sample map illustrating mapping for a water intake site.

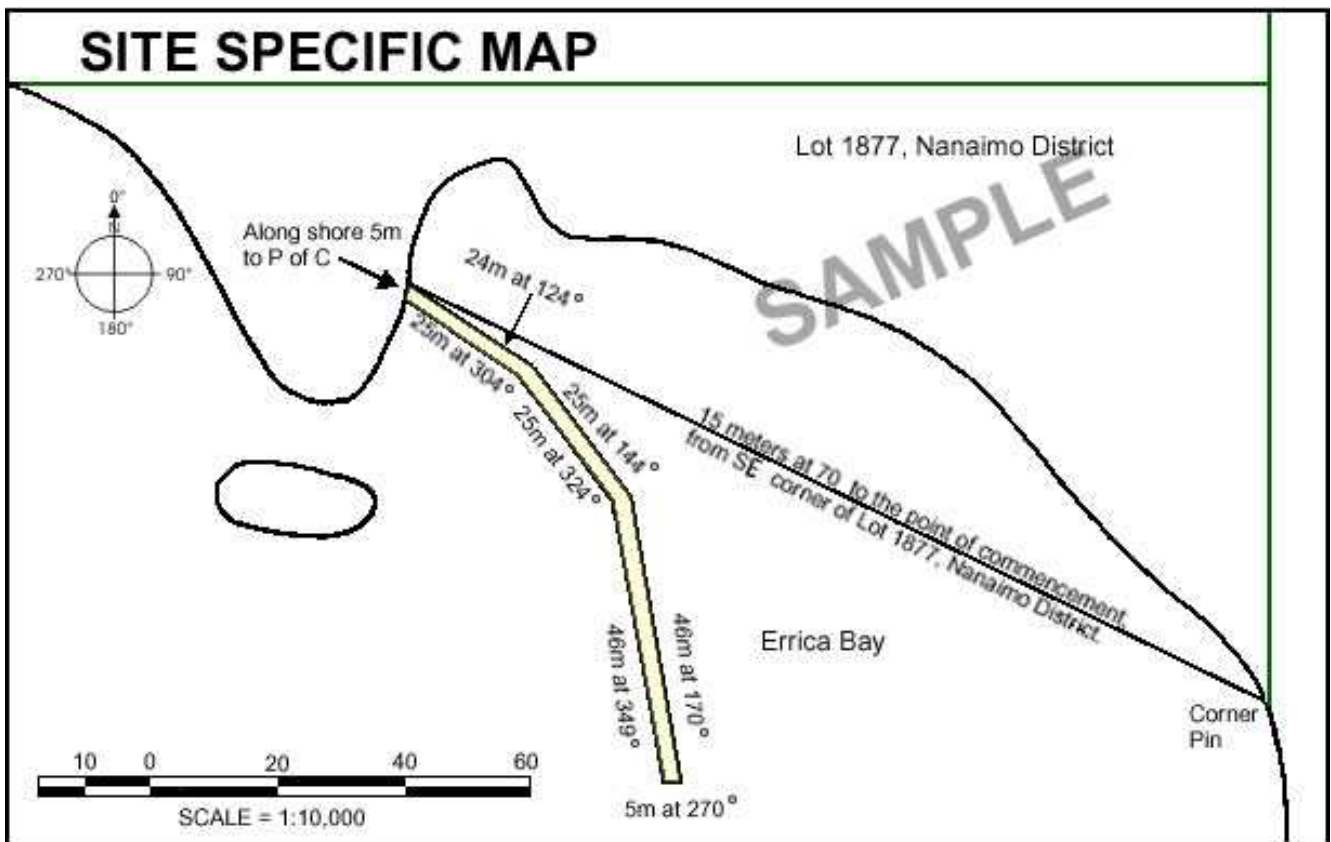
SITE SPECIFIC MAP

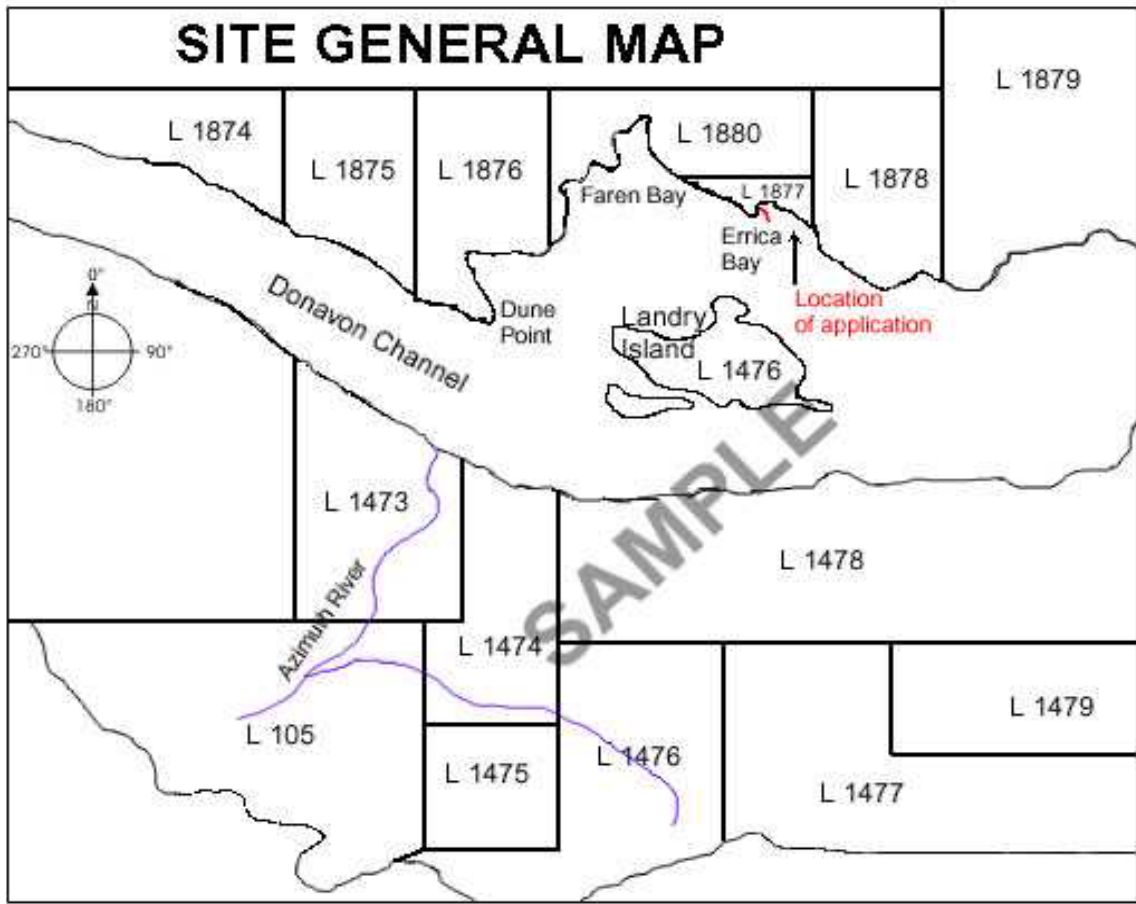




Water Intake Map Sample

Begin at the southeast corner of Lot 1877 Nanaimo District then 15 m at 70° to the Point of Commencement [PofC]
 Then 24 m at 124° Then 26 m at 144 Then 46 m at 170°
 Then 5 m at 270° Then 46 m at 349° Then 25 m at 324°
 Then 25 m at 304° Then along shore 5m returning to the PofC
 Total area containing 0.20 hectares





SCALE 1:20,000