

GATOR Expanded Image Help Guide



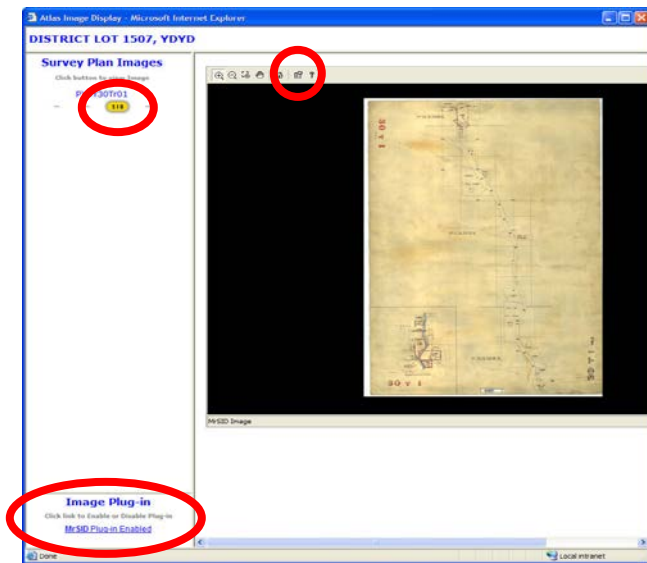
Last updated Jan 27, 2016

GATOR Expanded Image Help Guide

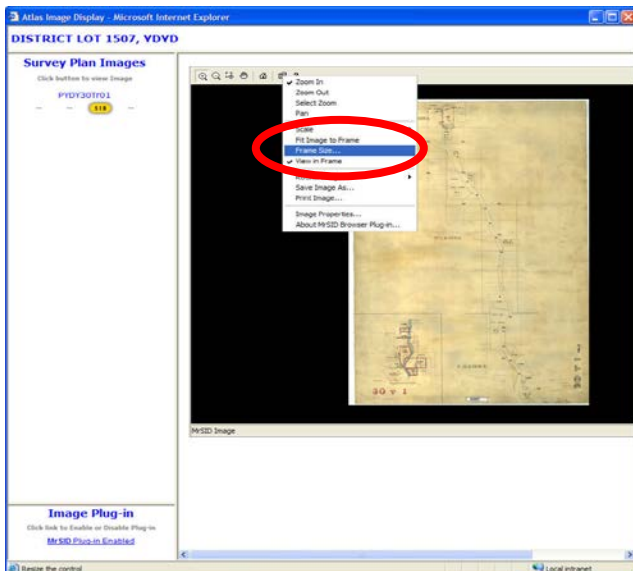


Instructions for Increasing Image Resolution and Large size Printing

The following are suggestions for printing an image using the **Enabled MrSID plug-in** and for increasing the image resolution. Click on **View Image** link in GATOR. From the Image link page, click on the MrSID plug-in link to ensure the plug-in is **Enabled**. The **MrSID plug-in** must be installed first, in order to enable. For the **MrSID plug-in** installation details see our [Image Plug-in](#) page. From the Image link page click on the **SID image button** to display image. Then from the **MrSID plug-in** Toolbar choose the **Other Options** button.



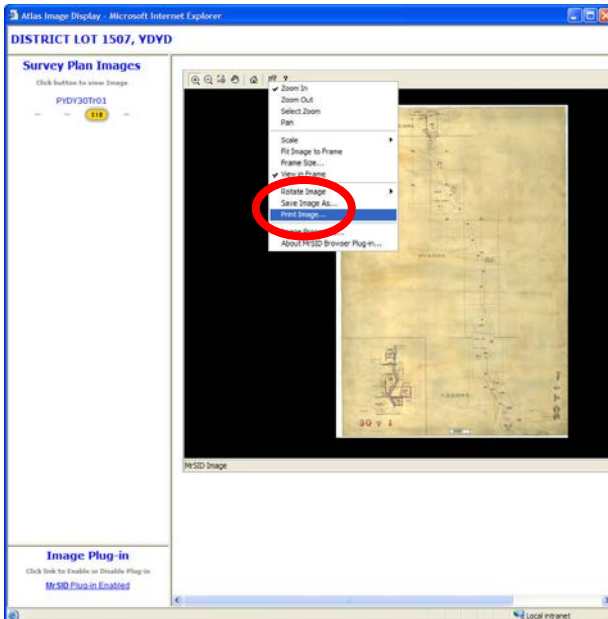
Select the **Other Options** button (beside the question mark) and choose **Frame Size** from the dropdown list.



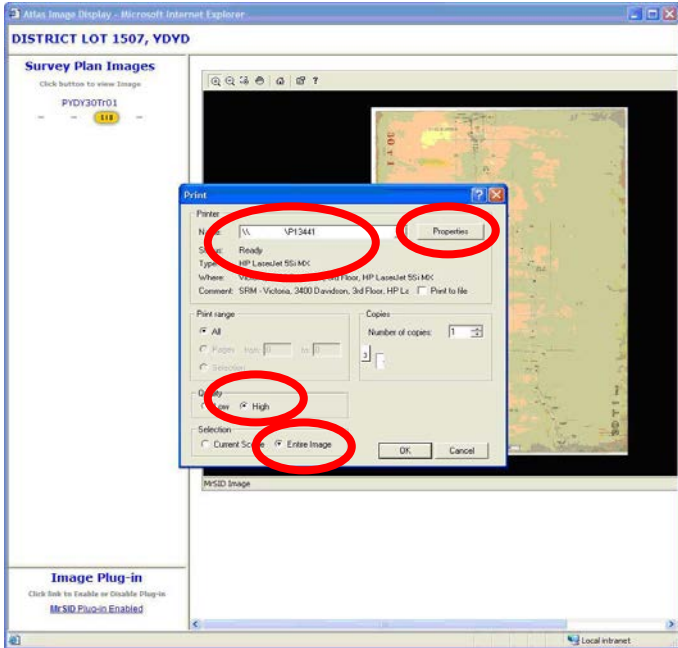
Then click on the **Custom Size** radio button and **increase** the **Frame Size** to **2000 Width and 1500 Height**. Also select the **Change Both** button. This will result in an image with higher resolution, when printed or saved. The resolution can be further increased if you first ZOOM INTO the specific area of interest, on the image, instead of saving or printing the entire plan.



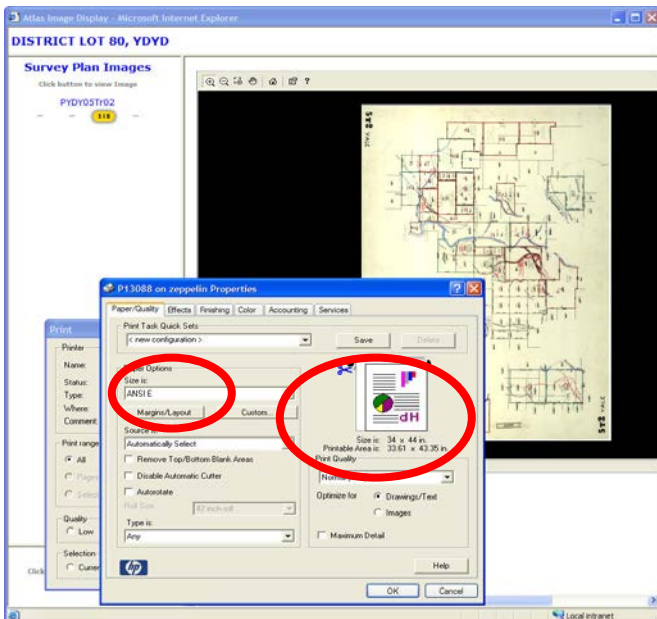
Then select **Print Image** from the dropdown menu off the **Other Options** button on the Toolbar.



A **Print Dialog box** will appear. Select the appropriate printer or plotter as well as other optional settings. Print dialog boxes will differ with each printer or plotter so there is no standard instructions that will apply to all makes or models of printers. The suggestions that follow may or may not be identical for your printer.

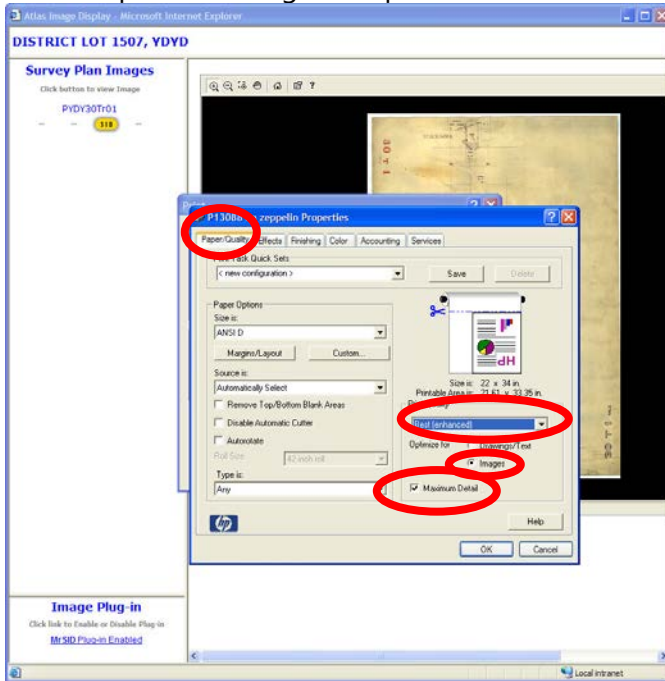


Select a **High Quality** format and the **Entire Image** option, if available, when printing the complete or entire plan or image. This will remove the black border from MrSID format images. For more printing options, click the **Properties** button. A print properties dialog box will then appear. Some printers may have an **Advanced** or **Preferences** button instead of **Properties**. For best quality print results users should consider printing from a live GATOR image.



Ensure the paper selected is the required size. Choose from the **Paper Options** dropdown list and select for instance the **ANSI E** for a 34 inch by 44 inch print or the **ANSI D** for a 22 by 34 inch print. Available paper selections will vary with each plotter or printer depending upon what is loaded on your own machine.

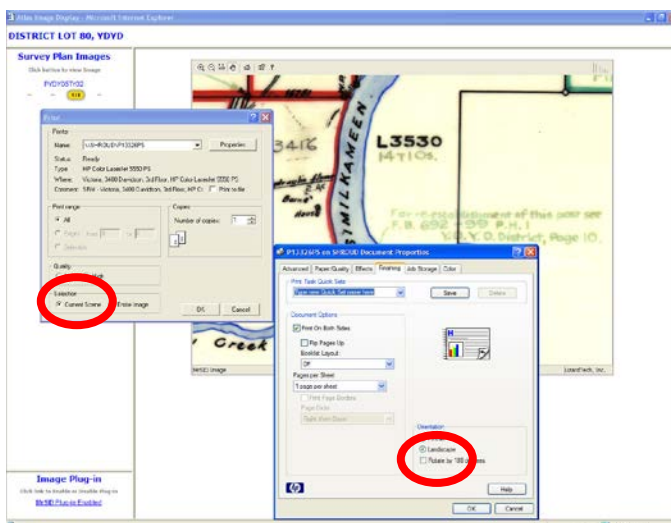
Print Properties Dialog Box Options



If available, select the **Maximum Detail** button, the **Optimize for Images** option, AND the **Best (enhanced)** selection from the Print Quality dropdown list. Each of these options refines and enhances the quality of prints made. Available printing enhancements or options will differ with each plotter. Default settings may also vary with each printer or plotter.

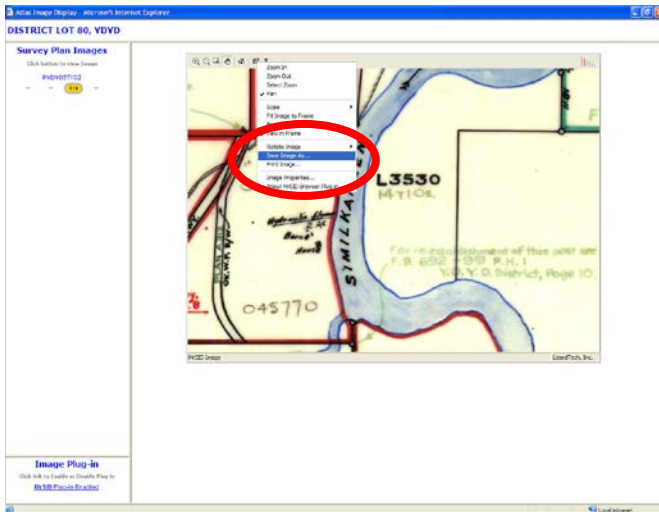
For printing a **ZOOMED** image select **Current Scene** as the print option from the print dialog box, rather than Entire Image, to print just the ZOOMED image.

Other **Tabs** in the Print Properties dialog box may provide additional printing selections, such as Portrait or **Landscape** layout.

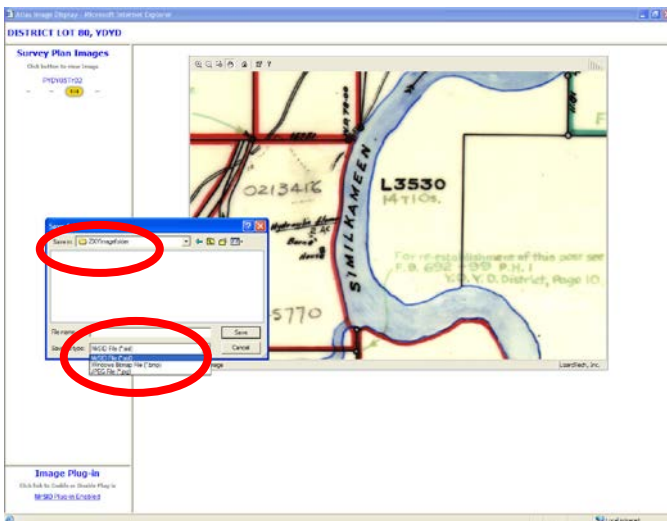


When all options have been selected, click the **OK** button and **Print**.

For Saving; a MrSID image from the MrSID plug-in, **ZOOM INTO** the image until the exact detail is shown, at the desired scale. Then select **Save As**.



NOTE; FOR ANY SAVED GATOR IMAGES - What You See Is What You Get - The resolution of **ANY SAVED** Tantalus GATOR image will be **EXACTLY** the same **pixel size** as the **SCREEN IMAGE** displayed in the Image Viewer, which can be 72 to 96 dpi. Remember to **ZOOM INTO** the image on the screen to capture all the desired details or information, as the saved image will reflect **ONLY** what you see on your monitor (**What You See Is What You Get**). You may need to **save several portions** of the image to capture your total area of interest, **at the required scale or detail**.



Right click on the image, or from the dropdown list, select the **Save As** option, then select the **File Location**, rename the image if desired, select **JPG image format**, as most computer can view JPEG (JPG) format and then **SAVE** the image. **DO NOT SAVE IMAGE AS MrSID FORMAT or HTML FORMAT**. For best quality print results users should consider printing from a live GATOR image.