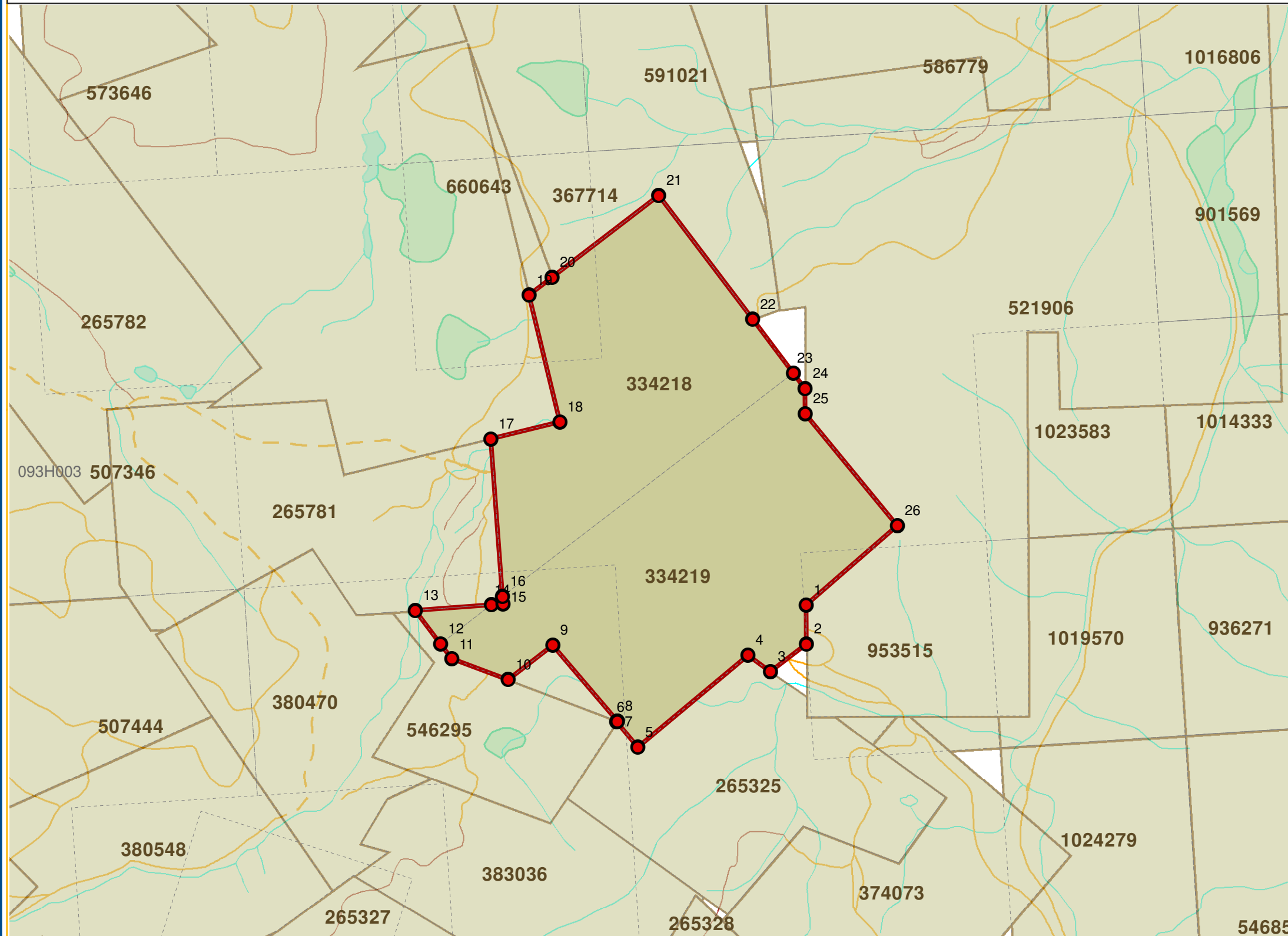


Placer Lease Application Technical Survey Plan

Application Event #: 4465251

File #: 13990-04-643



UTM Coordinates

[metres]

Point	UTM Zone	Easting	Northing
1	10	605088.884	5877932.828
2	10	605085.569	5877845.621
3	10	605001.807	5877787.229
4	10	604952.898	5877826.088
5	10	604696.223	5877630.661
6	10	604651.029	5877689.440
7	10	604652.432	5877691.372
8	10	604652.838	5877691.200
9	10	604514.500	5877867.008
10	10	604410.494	5877794.069
11	10	604285.663	5877847.056
12	10	604262.000	5877881.000
13	10	604208.345	5877957.967
14	10	604380.155	5877963.367
15	10	604406.567	5877964.198
16	10	604406.025	5877981.403
17	10	604394.917	5878334.816
18	10	604551.947	5878365.932
19	10	604494.550	5878652.616
20	10	604548.200	5878690.016
21	10	604796.404	5878863.044
22	10	604995.747	5878577.093
23	10	605082.342	5878452.873
24	10	605107.291	5878417.084
25	10	605105.146	5878360.661
26	10	605301.494	5878101.896

Area in Hectares: 67.316

I hereby agree with the boundary as identified in red.

Tenure #:	Claim Name:
334218	G 1
334219	G 2

Grouse Creek Gold Mines Ltd.
(222102)

Signature

Scale: 1:10,000

● Point with UTM Coordinates
 Placer Claim
 Parks & Protected Areas
 Mapsheet Grid
 MTO Cell Grid

