

# Seed & Seedling Costs over Time

Seed Use Efficiency Meeting 2008



# Seedling & Seed Price Trends

- Seedling Price Trends
  - Source of Information
  - Seedling Request Trends
  - Potential Influences on Seedling Prices
- Seed Price Trends
  - Source of Seed
  - Seed Price Trends
- Summary



# Seedling Price Trends

- Sources of Information
  - Ministry of Forests Programs
  - Competitive Tenders
  - Relevance on a Provincial Level
- Seedling Request Trends
- Influences on Seedling Prices



# Seedling Price Trends

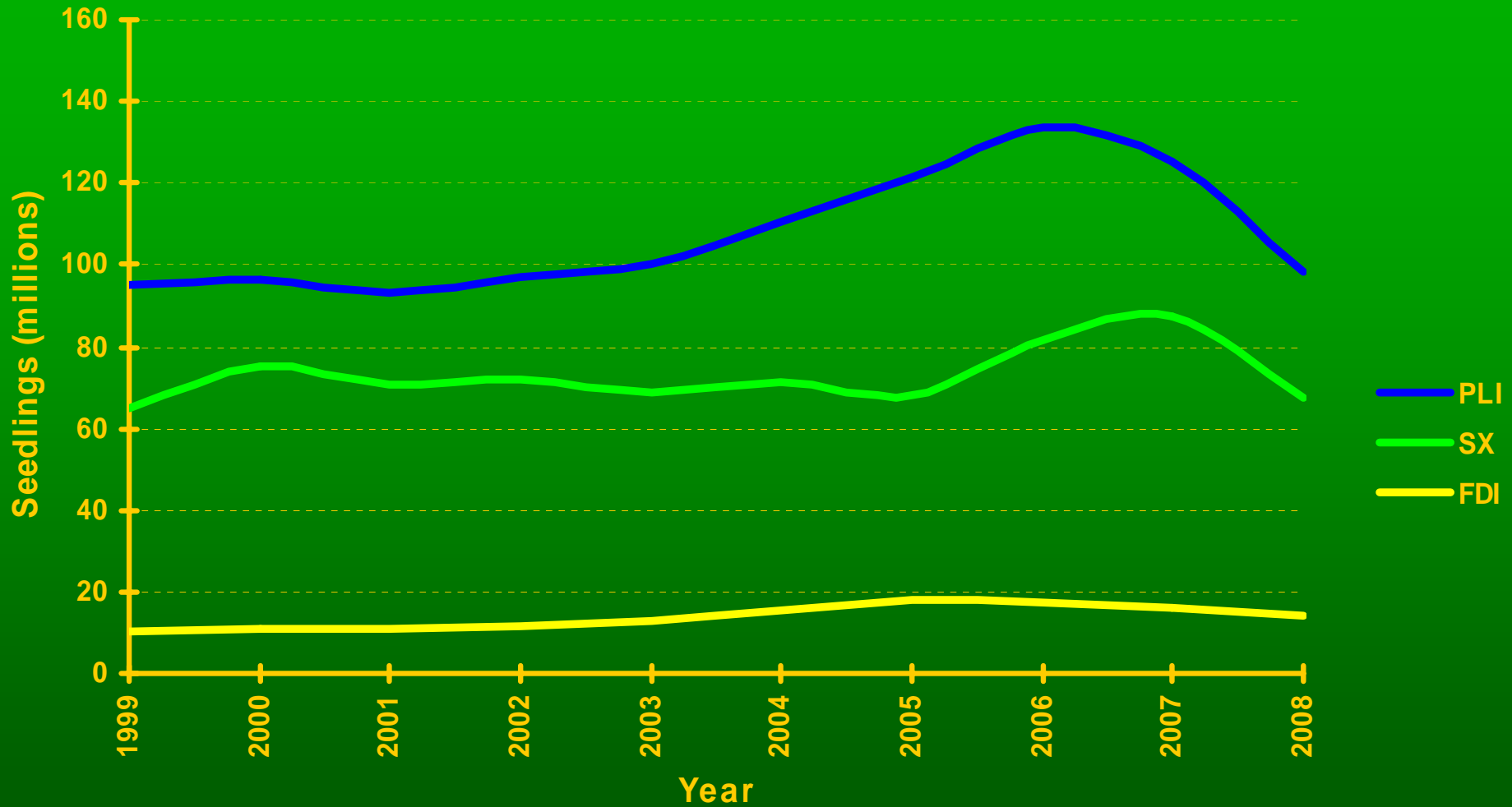
- Sources of Information
- Seedling Request Trends
  - Request Amounts, Coastal & Interior Species
  - Predominant Stocktypes
  - Price Trends
- Potential Influences on Seedling Prices



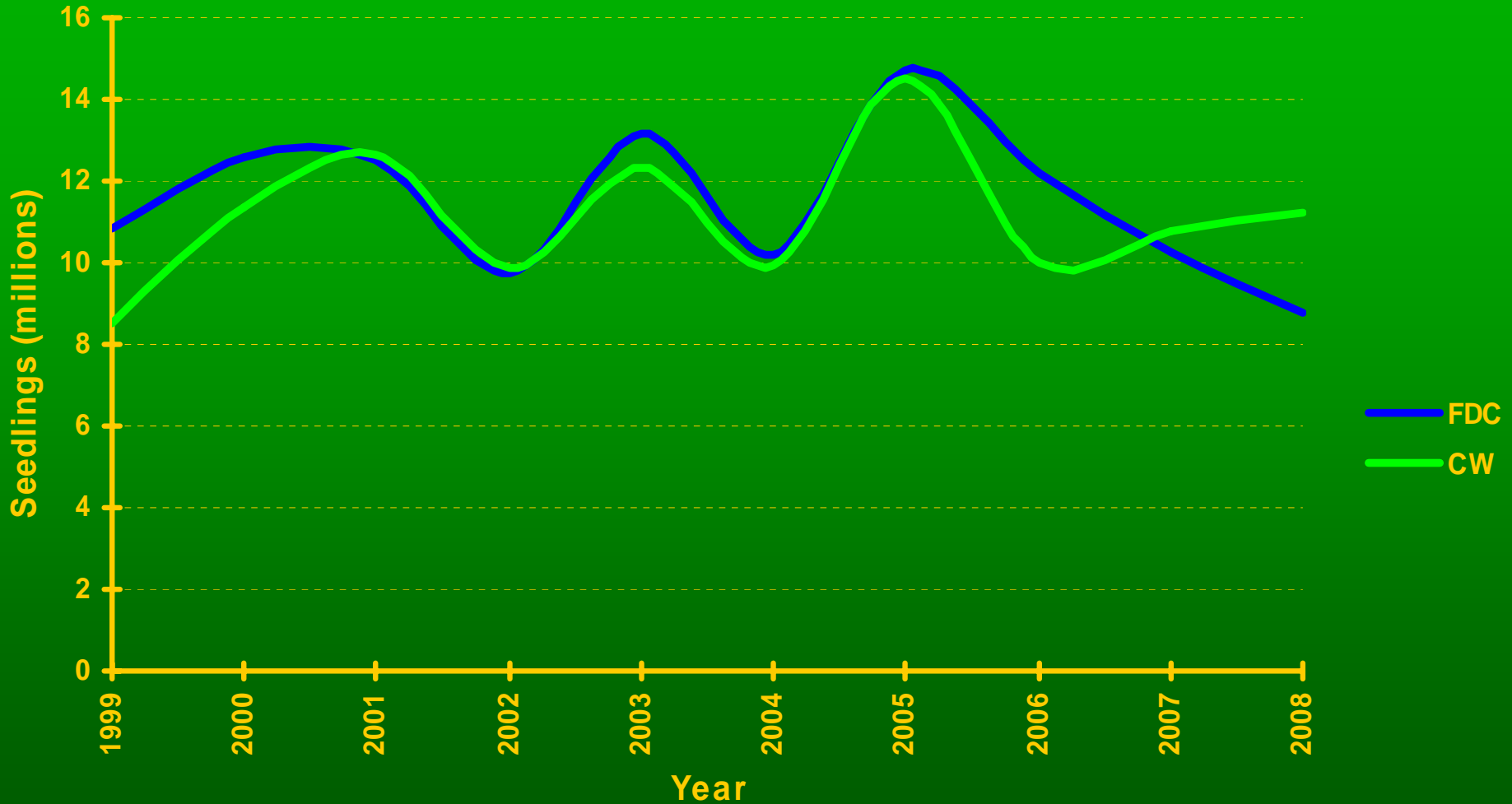
# 10 Year Request Trends - All Species



# 10 Year Request Trends - Major Interior Species



# 10 Year Request Trends - Major Coastal Species



# Seedling Price Trends

- Sources of Information
- Seedling Request Trends
  - Request Amounts, Coastal & Interior Species
  - Predominant Block Types
  - Price Trends
- Potential Influences on Seedling Prices

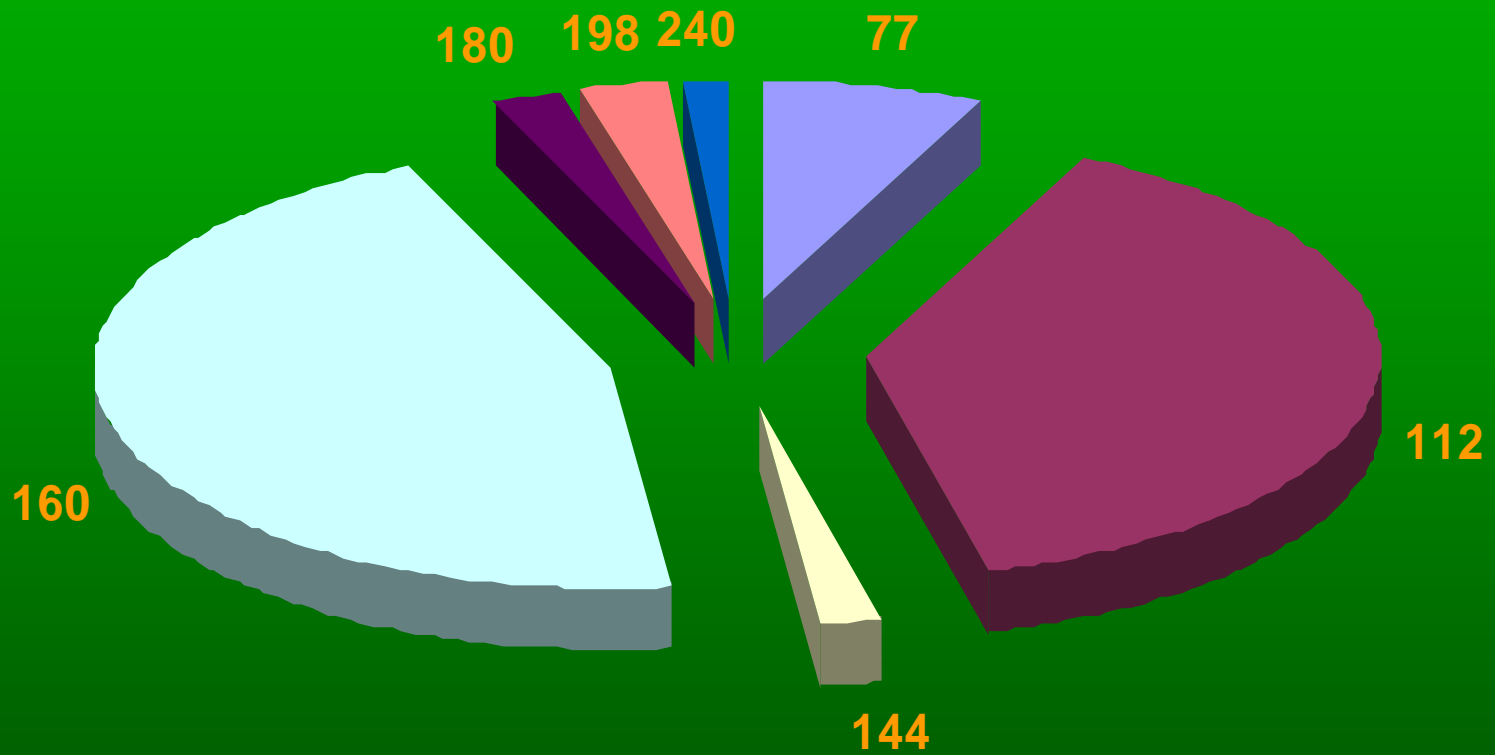




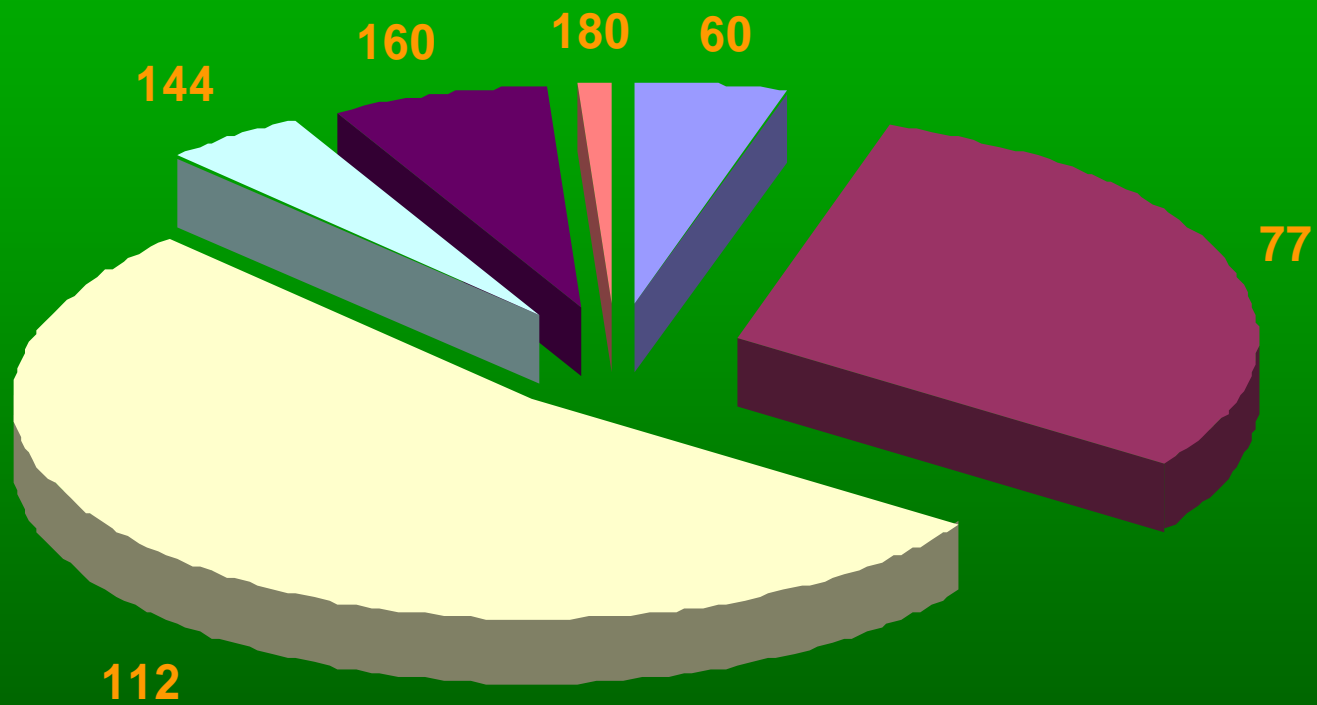
# Block Type Trends



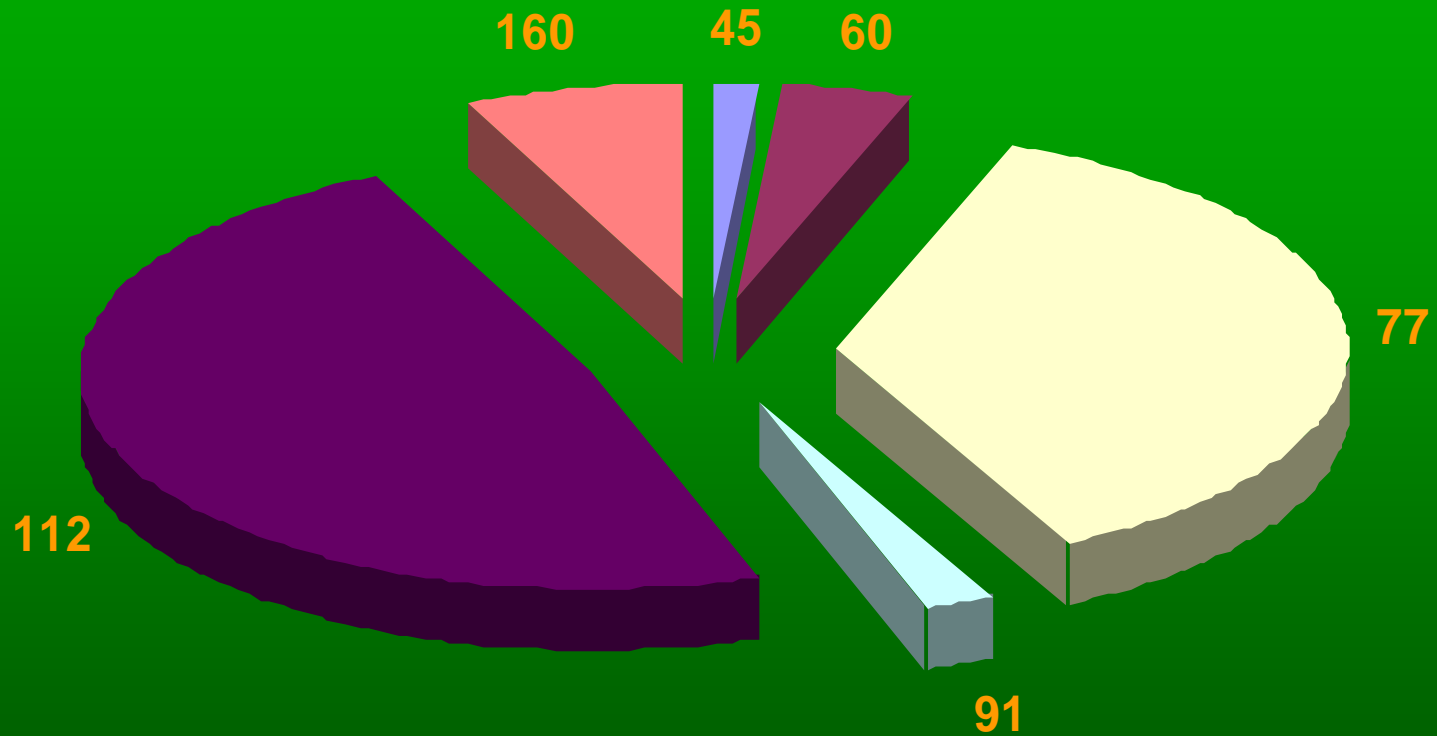
# PLI 10 Year Block Type Amounts



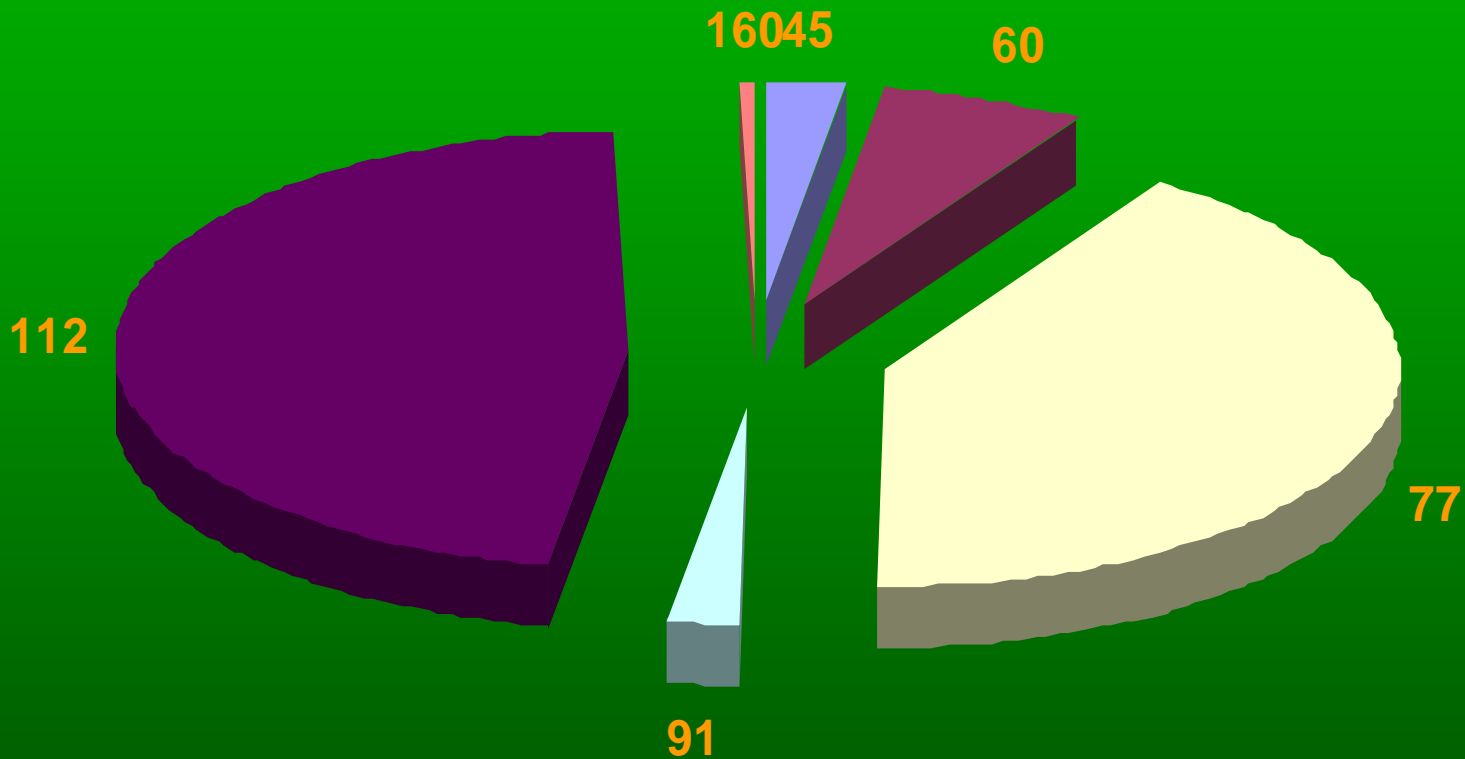
# SX 10 Year Block Type Amounts



# CW 10 Year Block Type Amounts



# FDC 10 Year Block Type Amounts



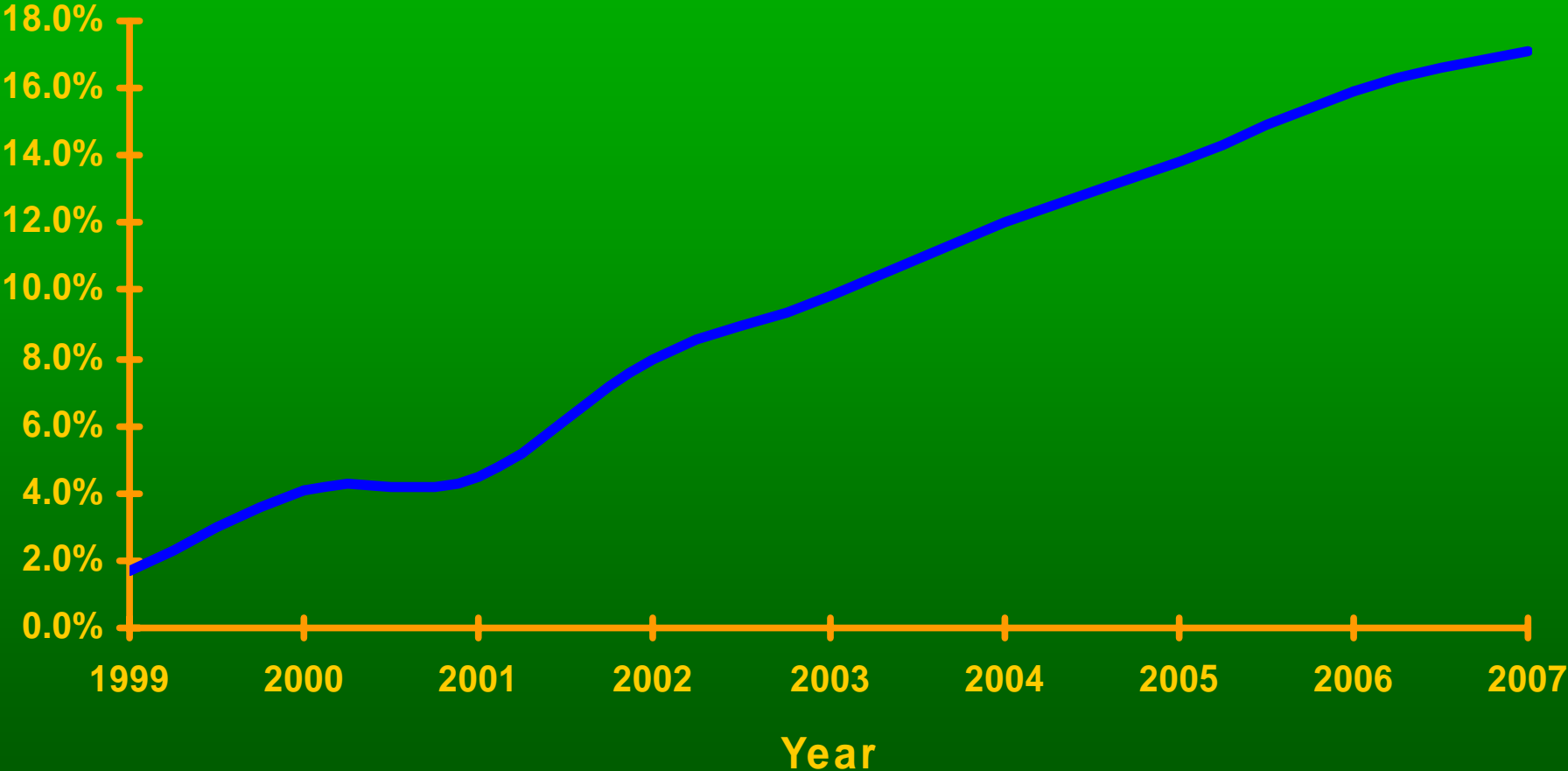
# Seedling Price Trends

- Sources of Information
- Seedling Request Trends
  - Request Amounts, Coastal & Interior Species
  - Predominant Block Types
  - Price Trends
- Potential Influences on Seedling Prices



# BC Annual Rate of Inflation

BC Stats Consumer Price Index

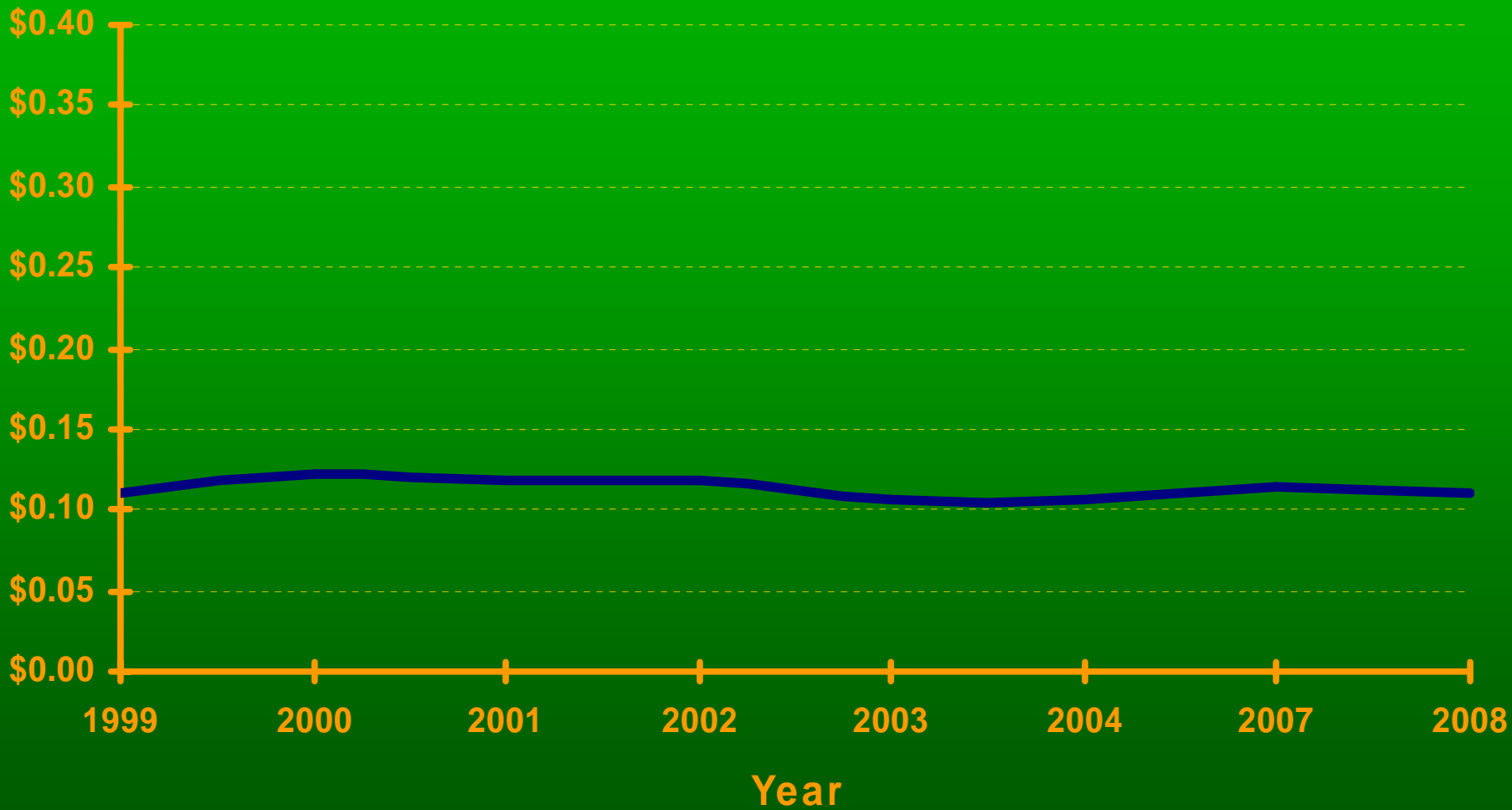


# Lodgepole Pine Seedling Price Trends -112's

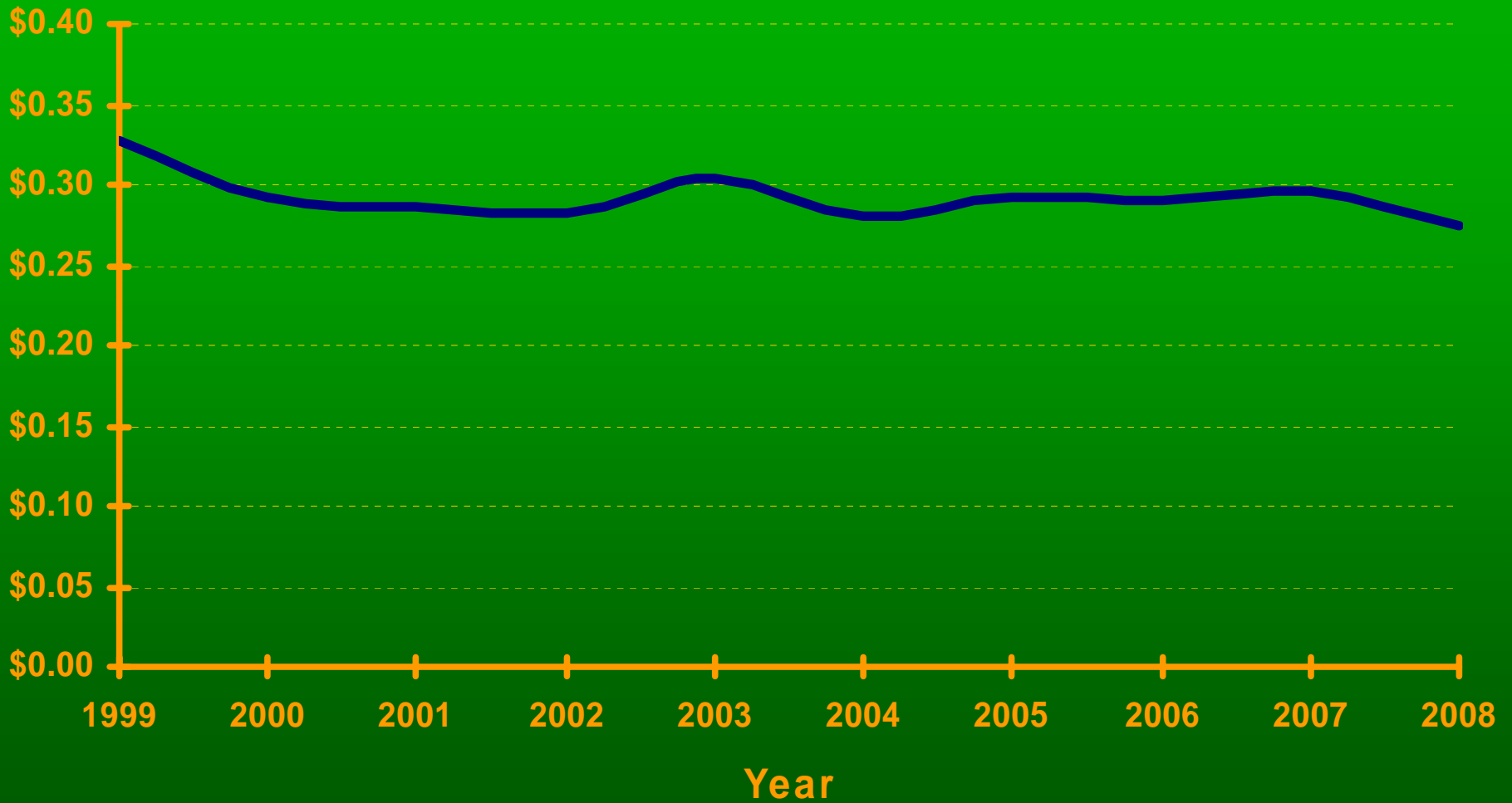




# Lodgepole Pine Seedling Price Trends -160's



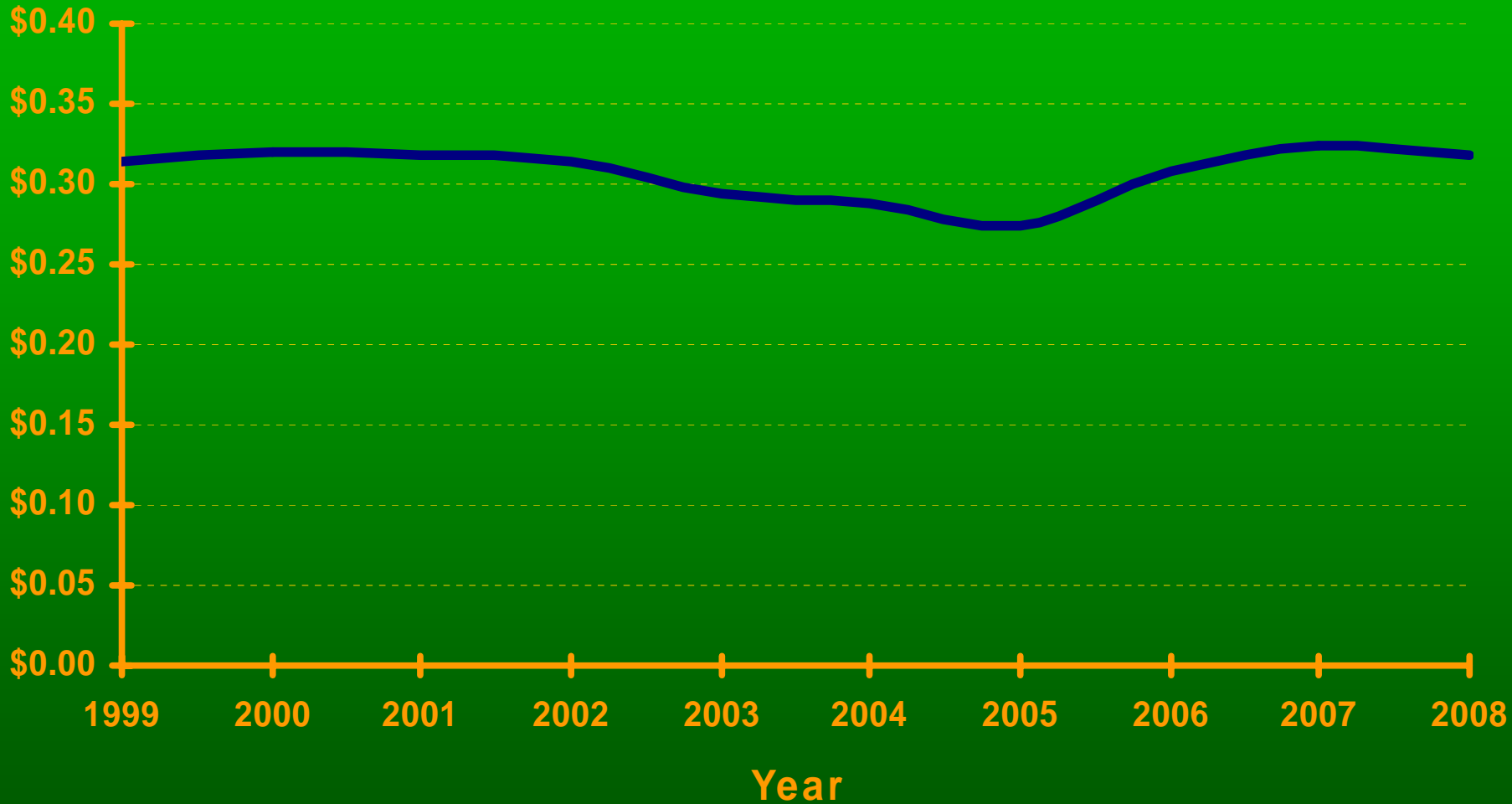
# Interior Spruce Seedling Price Trends -77's



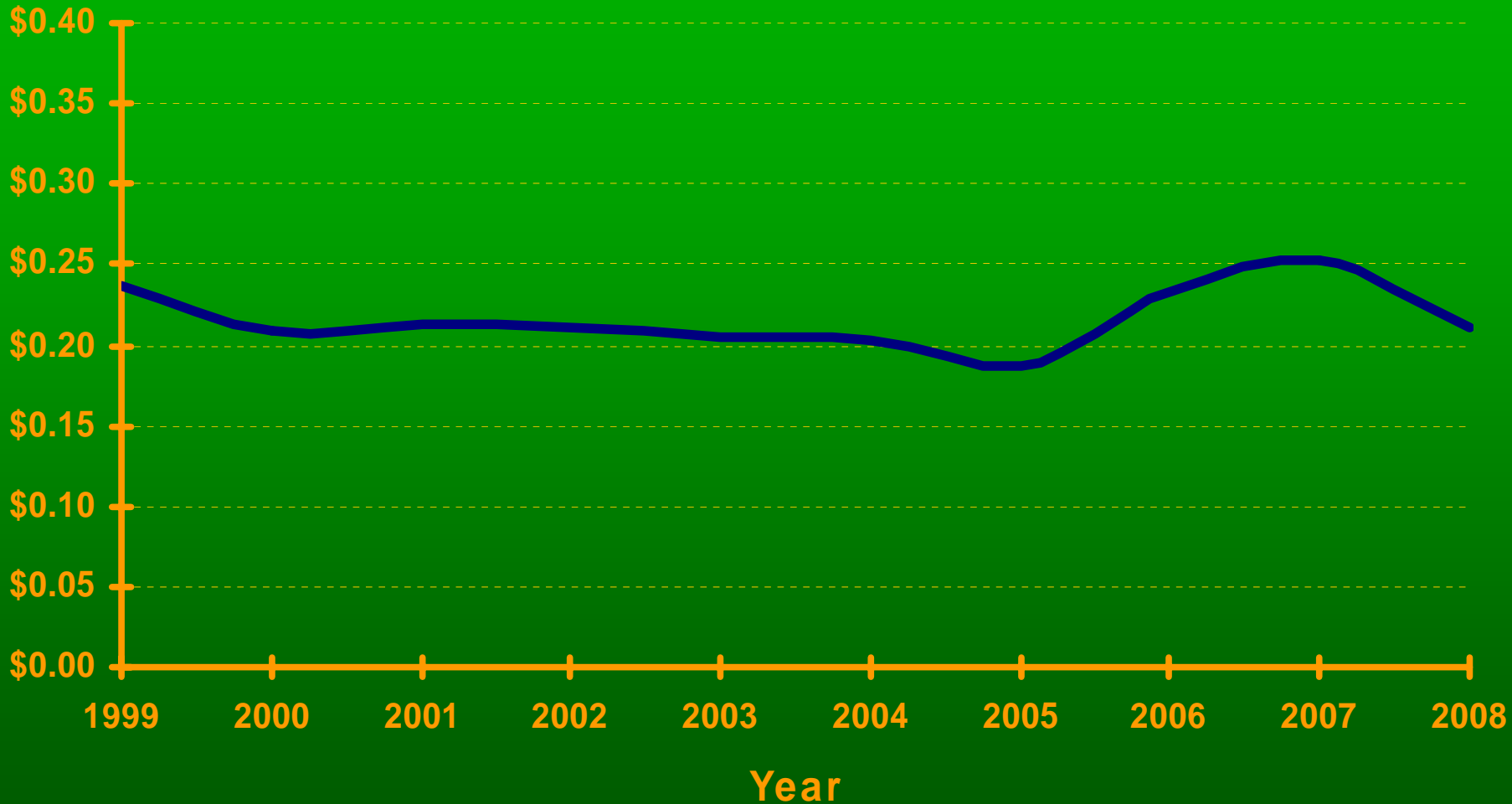
# Interior Spruce Seedling Price Trends -112's



# Western Redcedar Seedling Price Trends - 77's



# Western Redcedar Seedling Price Trends -112's



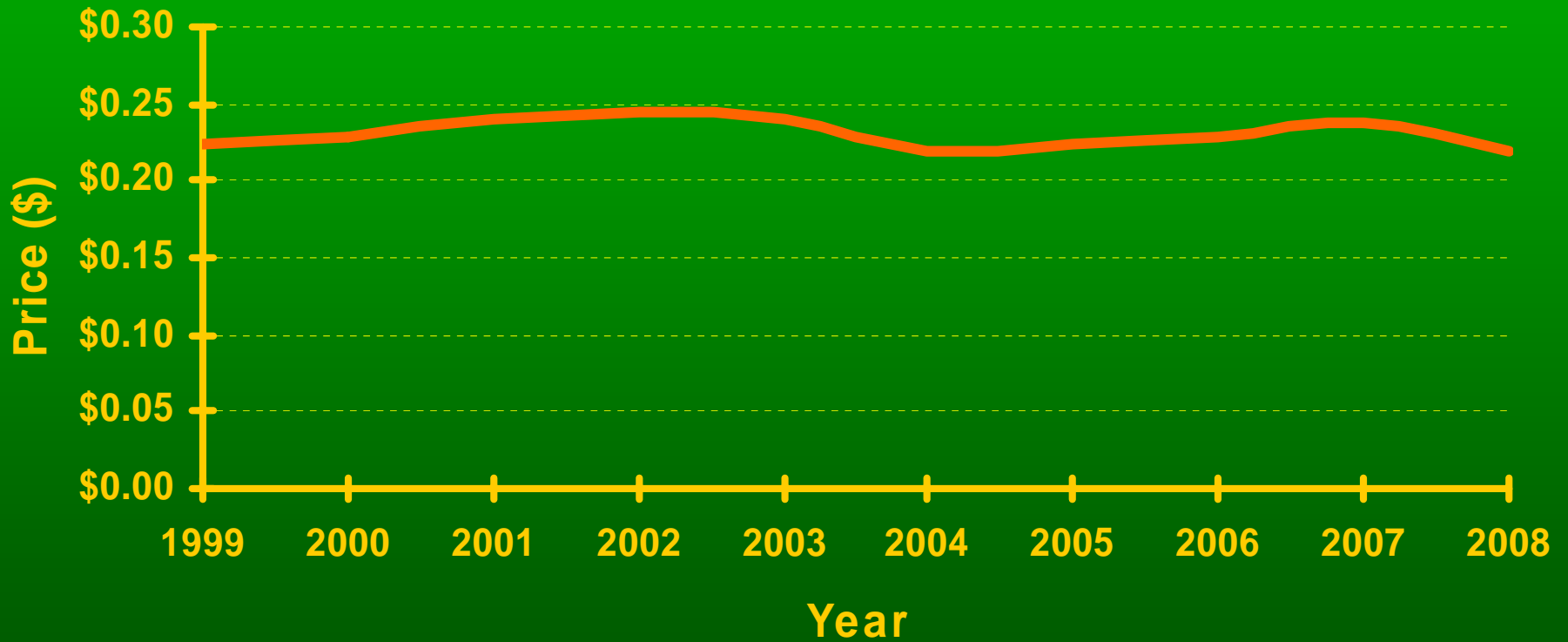
# Coastal Douglas-fir Seedling Price Trends - 77's



# Coastal Douglas-fir Seedling Price Trends -112's



# Annual Mean Seedling Price



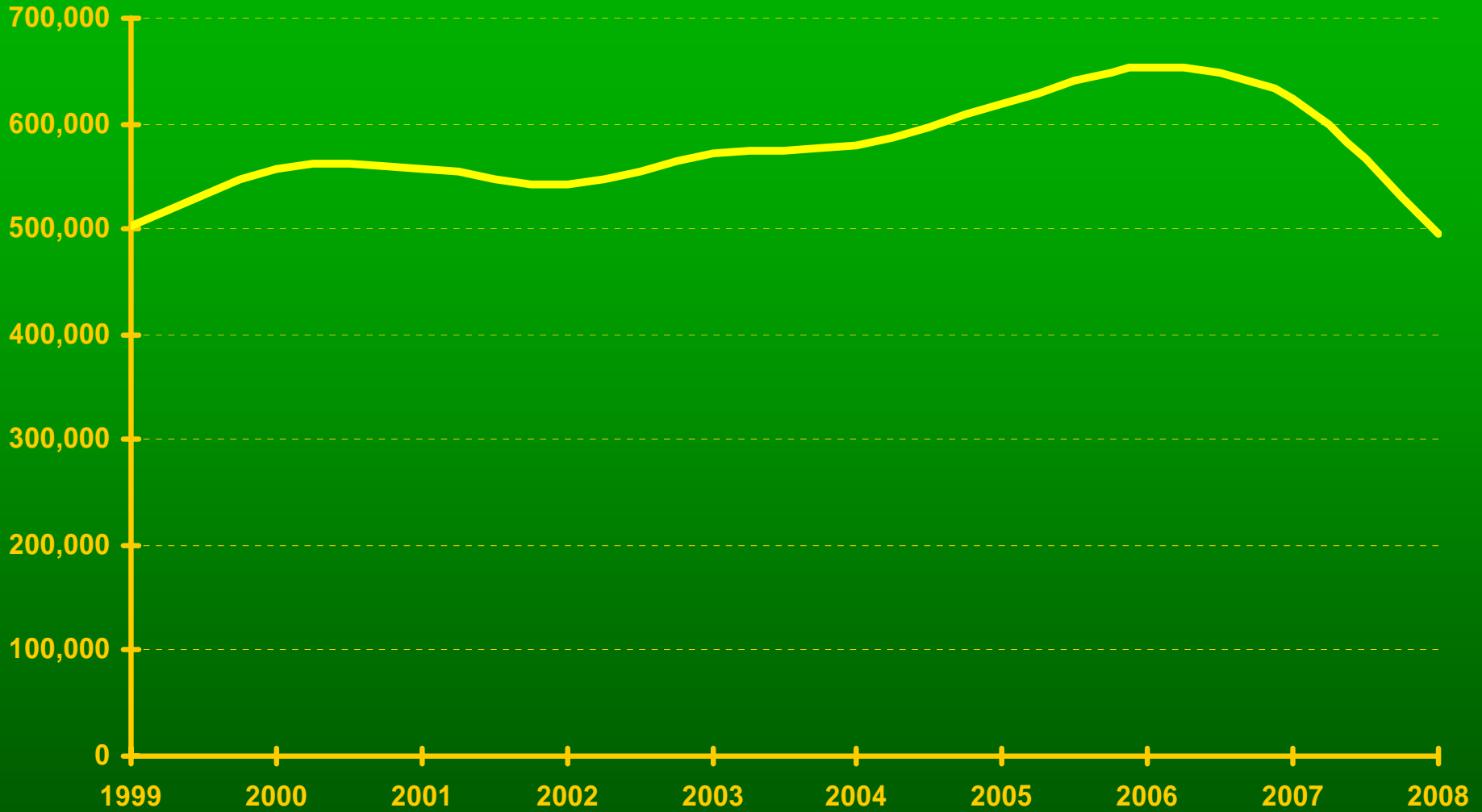


# Seedling Price Trends

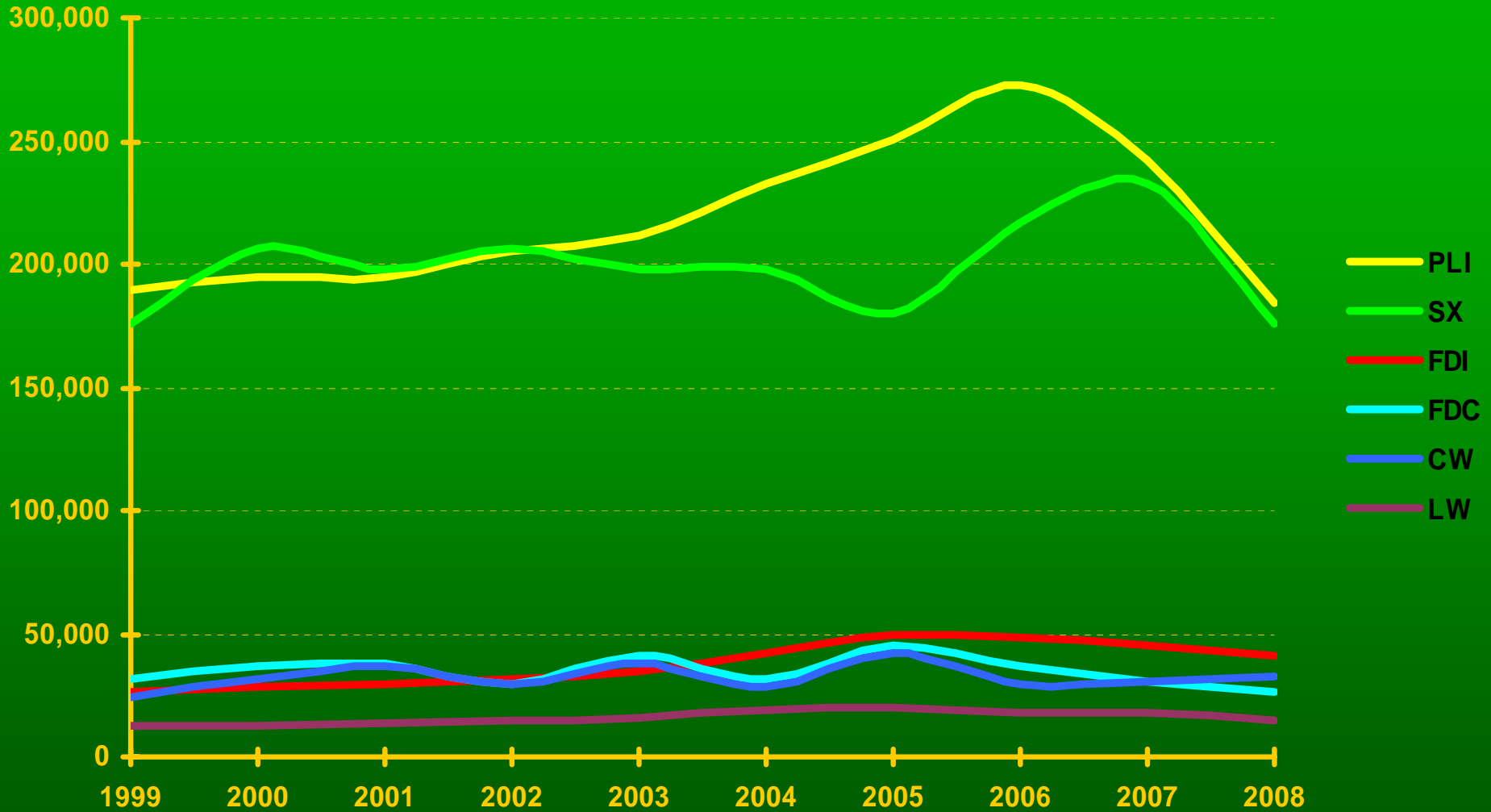
- Sources of Information
- Seedling Request Trends
- Potential Influences on Seedling Prices
  - nursery space demand
  - softwood lumber market



# Total Nursery Area in Square Metres

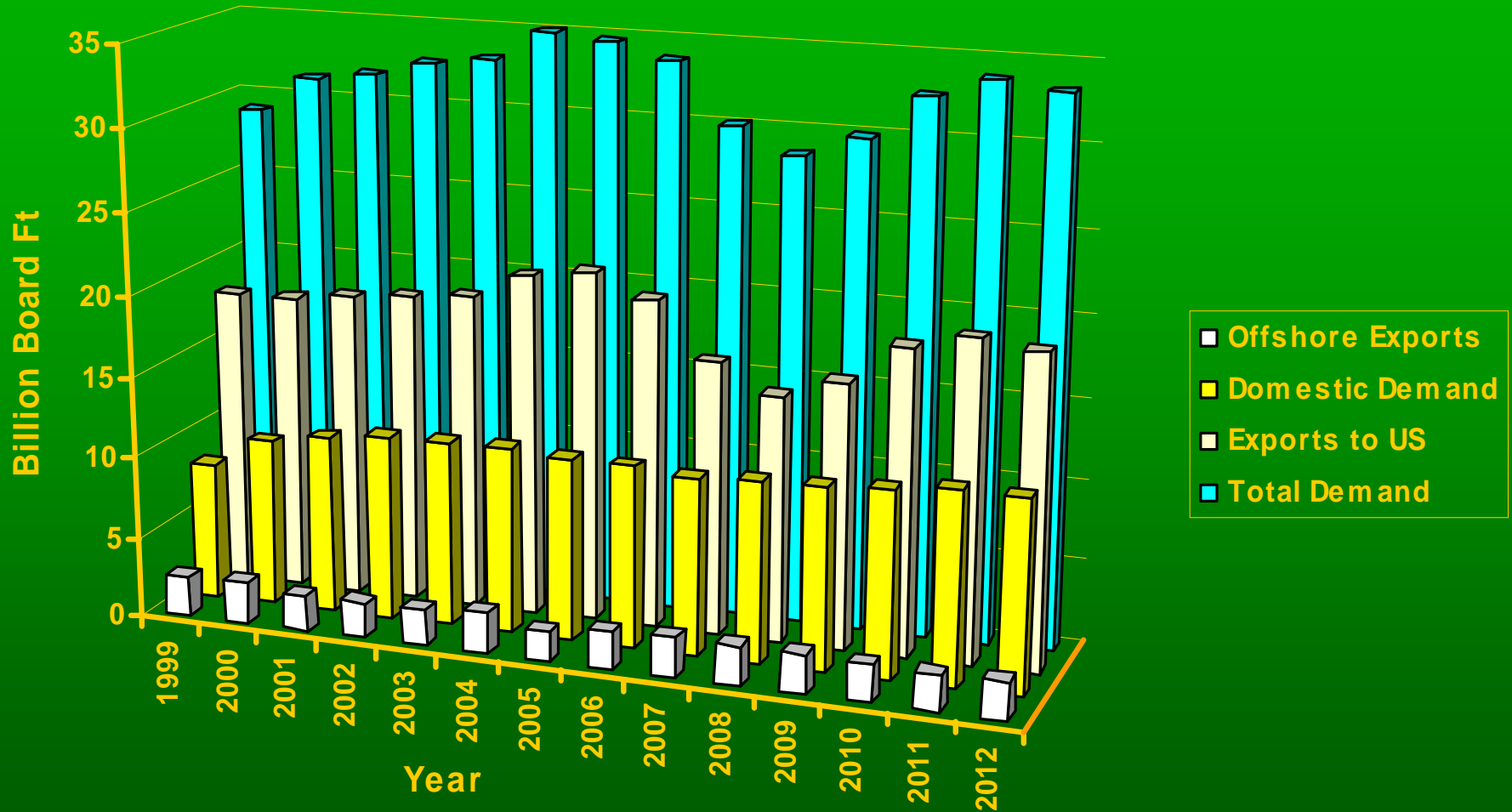


# Nursery Area in Square Metres by Species

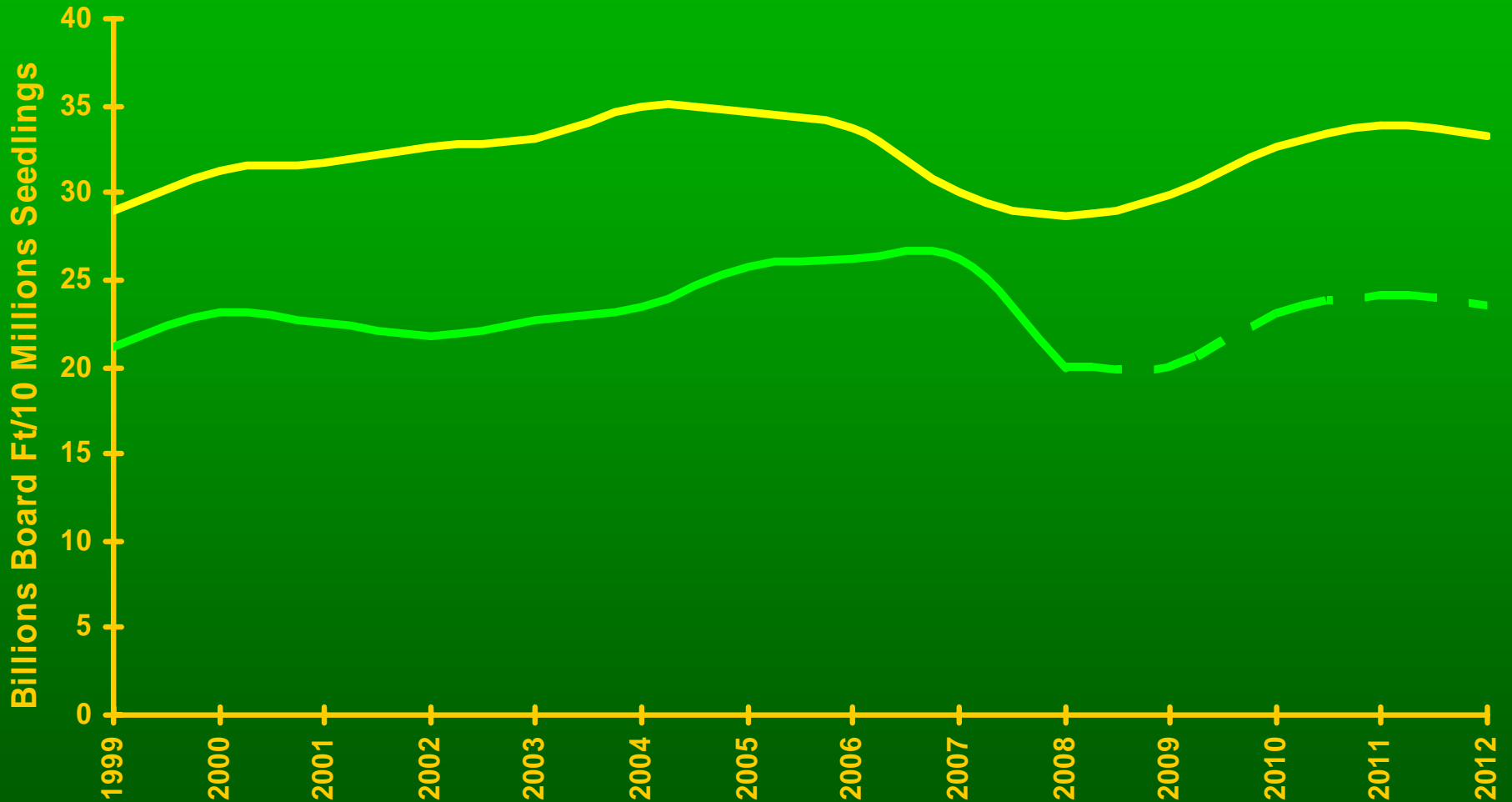


# Historical and Forecast Lumber Demand\*

\*RISI



# Softwood Lumber Demand & Seedlings Requested



# Seed Price Trends

- Source of Seed
  - Seed Orchard
  - Wild Stand Collection
- Seed per Seedling Price Trends
  - Major Species
- Portion of Total Seedling Cost
  - Major Species and Block Types



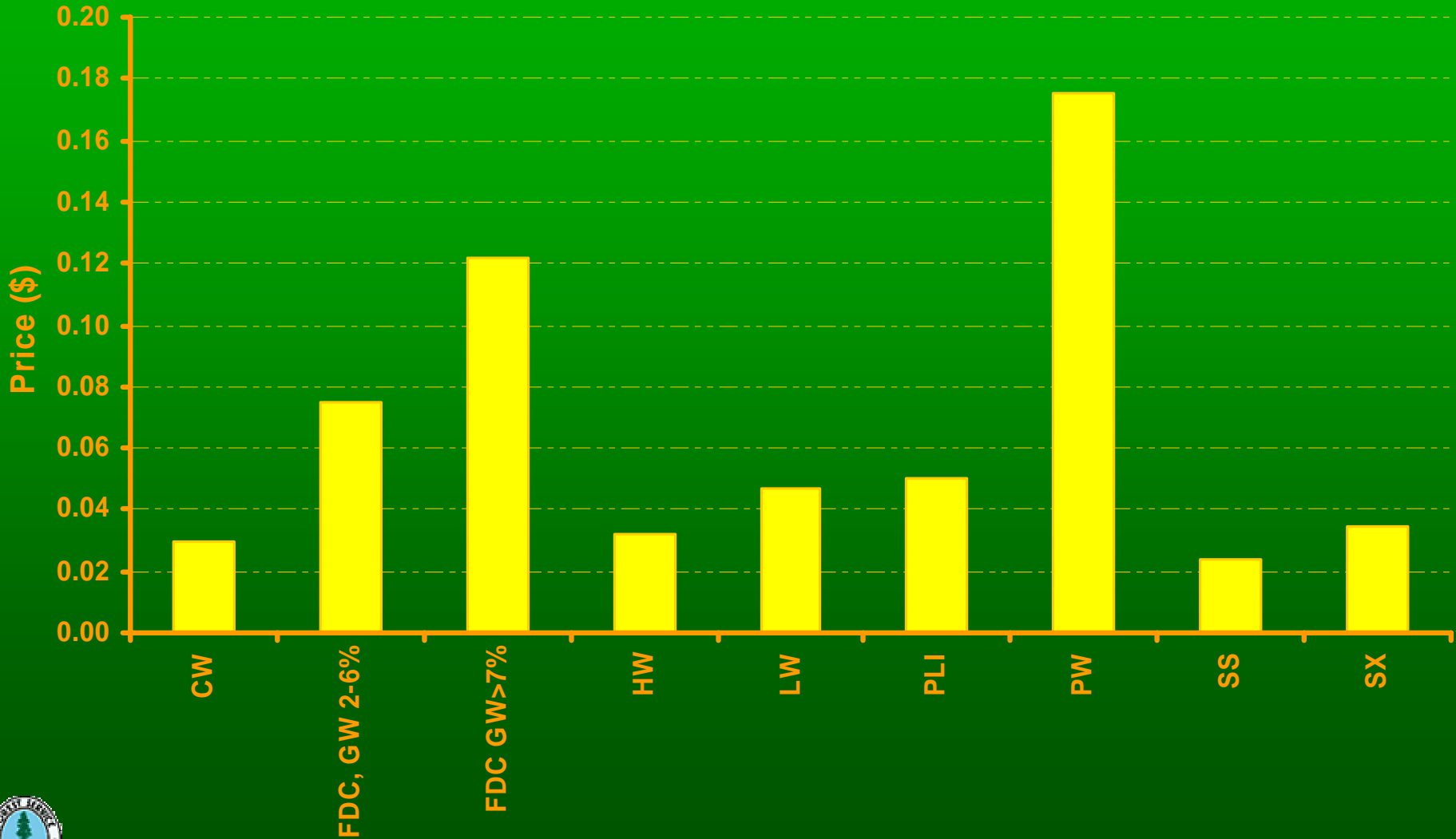
# Seed Price Trends

- Source of Seed
  - Seed Orchard
  - Wild Stand Collection
- Seed/Seedling Price Trends
  - Major Species
- Portion of Total Seedling Cost
  - Major Species and Stocktype



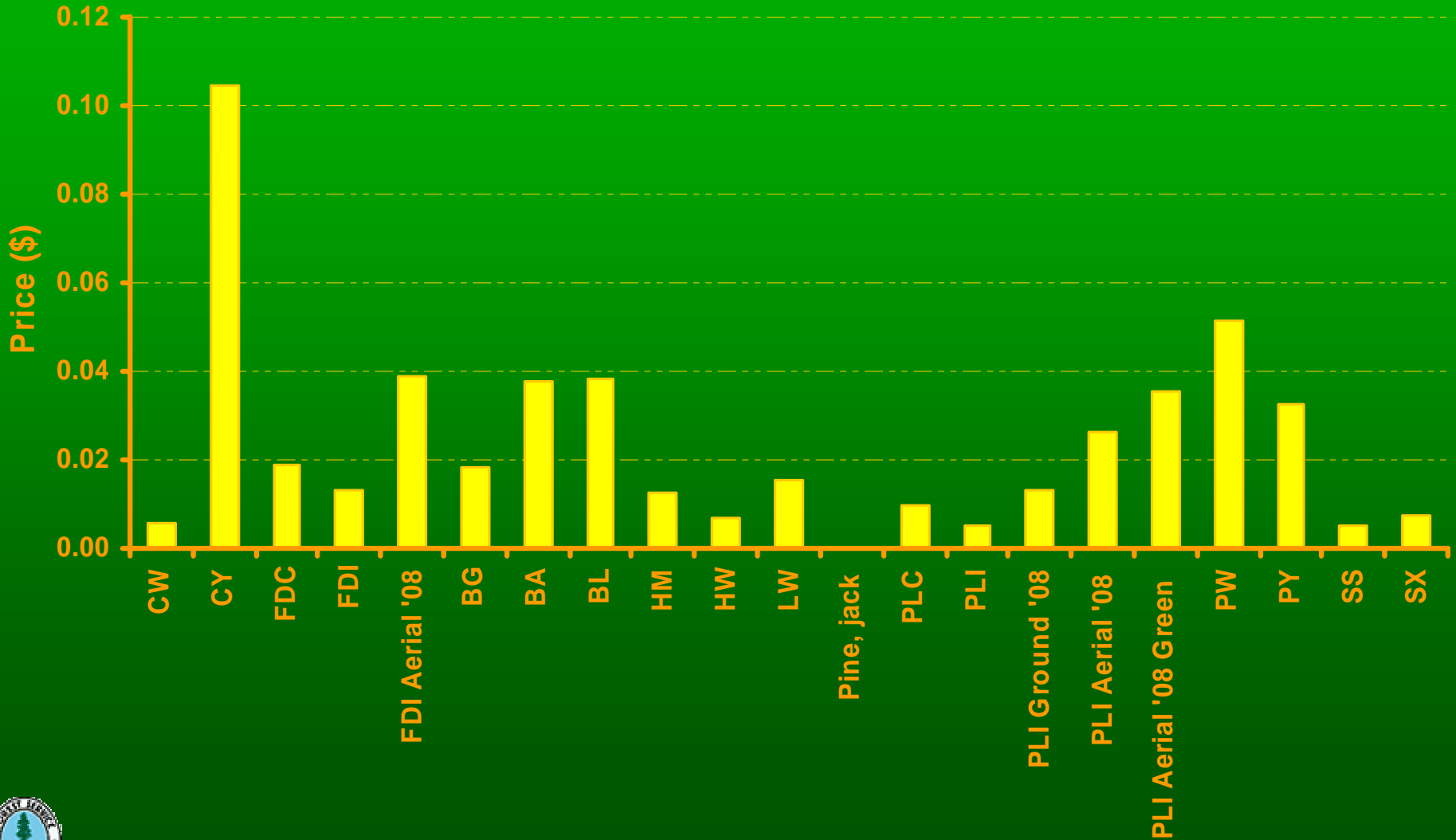
# Current Orchard Seed Price/Seedling

(L. Charleson TIB)





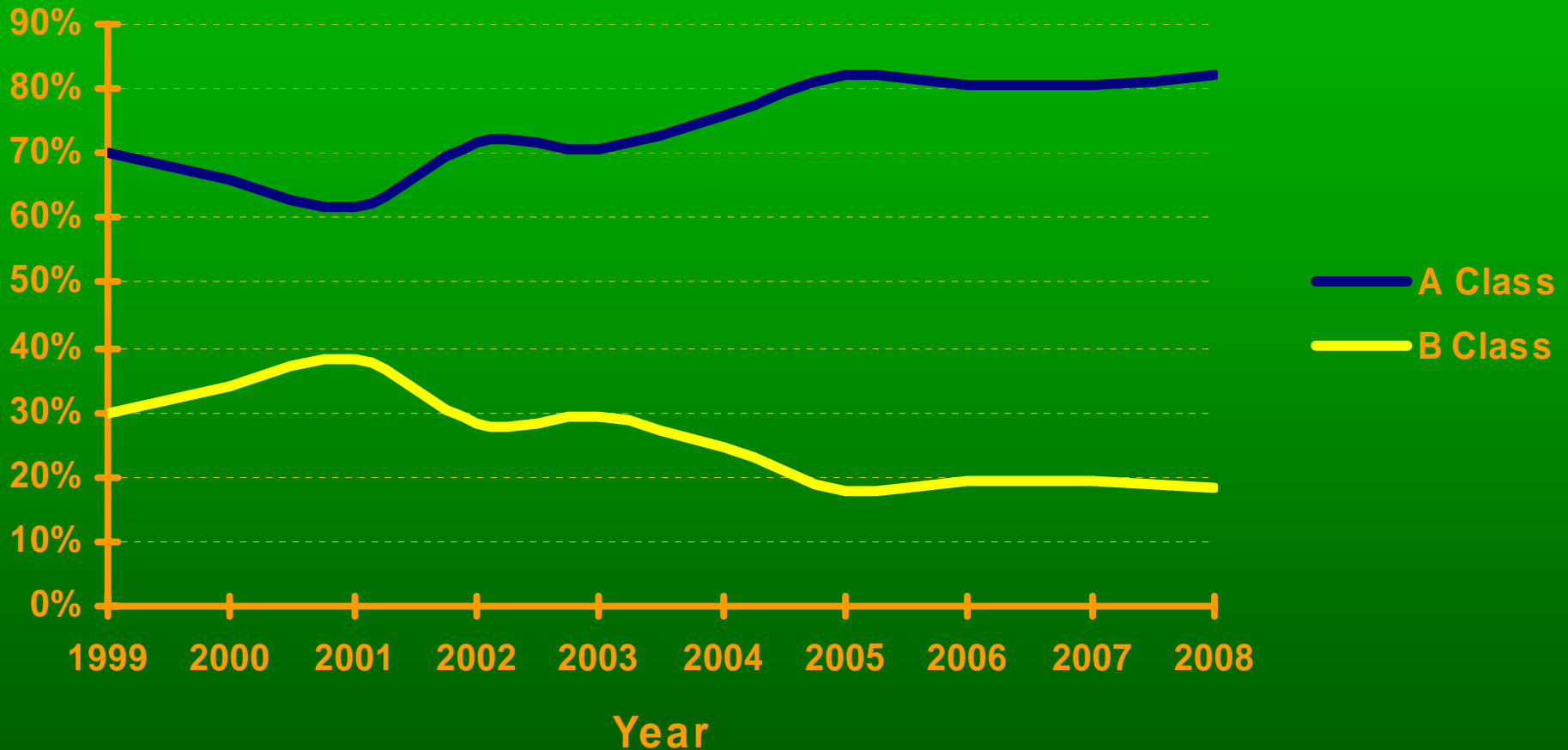
# Current Wild Stand Seed Price/Seedling (L. Charleson TIB)



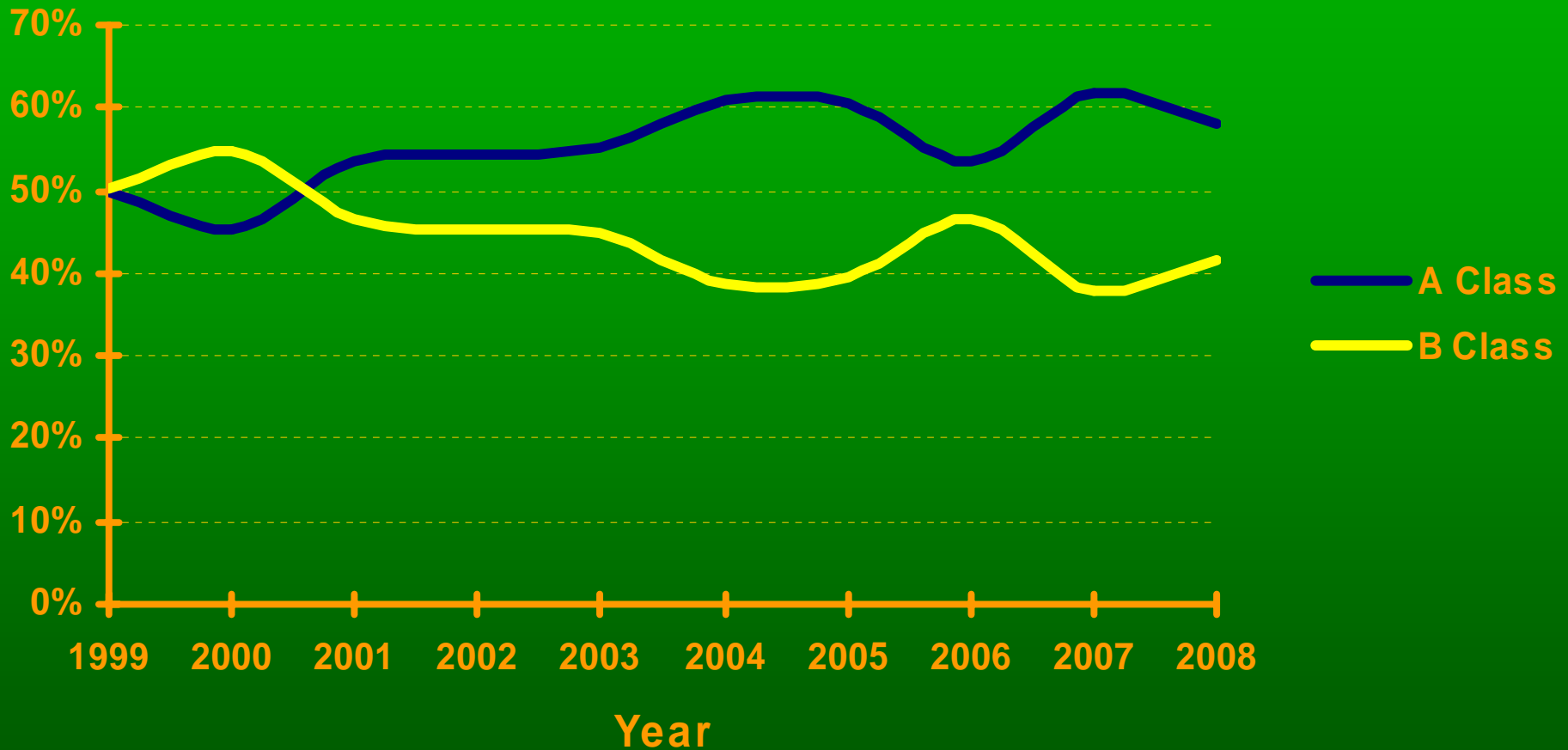
# Lodgepole Pine - Seed Use by Genetic Class



# Hybrid Spruce - Seed Use by Genetic Class



# Western Red Cedar - Seed Use by Genetic Class



# Coastal Douglas Fir- Seed Use by Genetic Class



# Seed Price Trends

- Source of Seed
  - Seed Orchard
  - Wild Stand Collection
- Seed/Seedling Price Trends
  - Major Species
- Portion of Total Seedling Cost
  - Major Species and Block Type



# Lodgepole Pine Mean Seed Price/Seedling (\$)

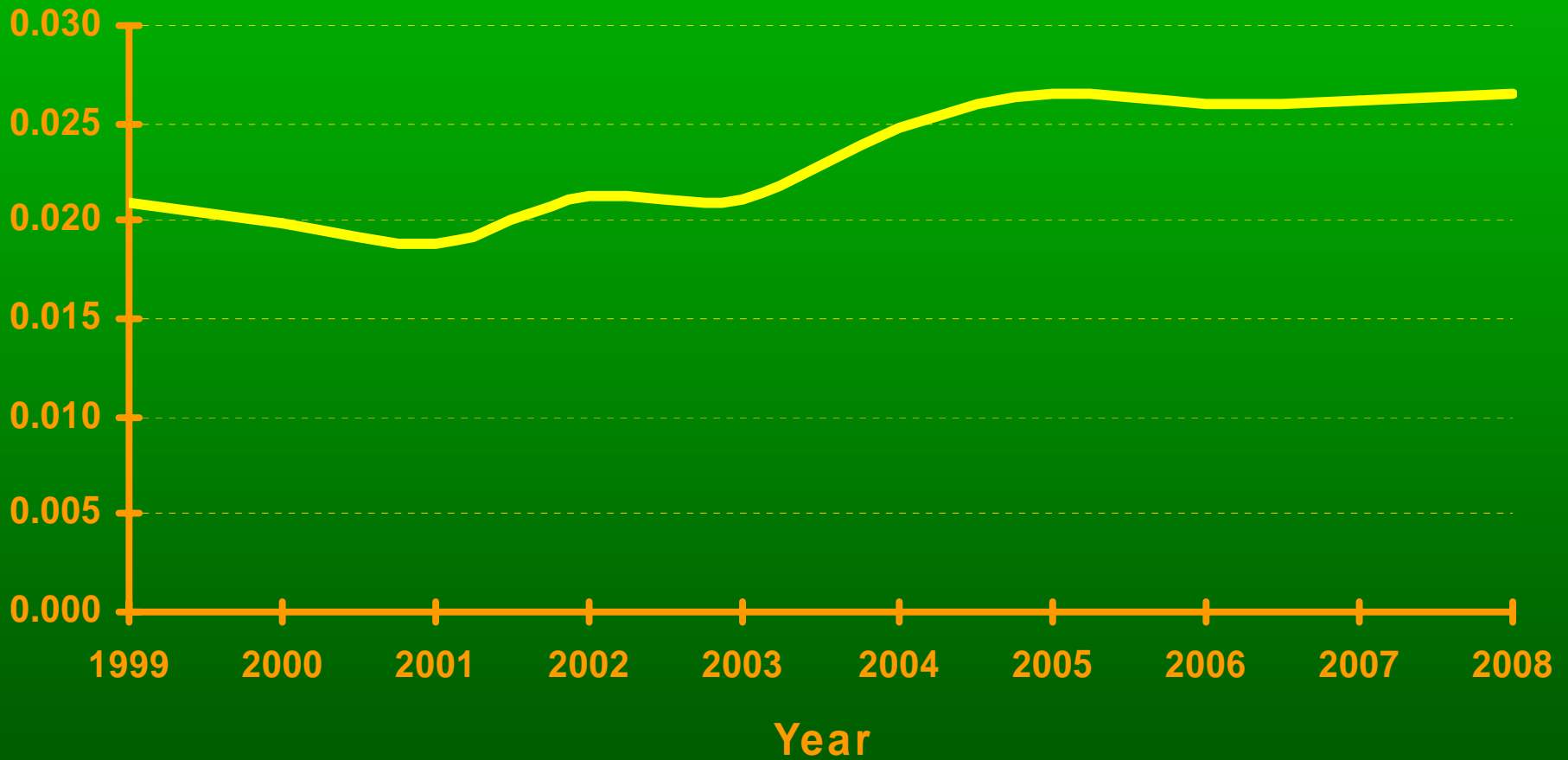


# Lodgepole Pine Mean Seed Price/Seedling (\$) \*





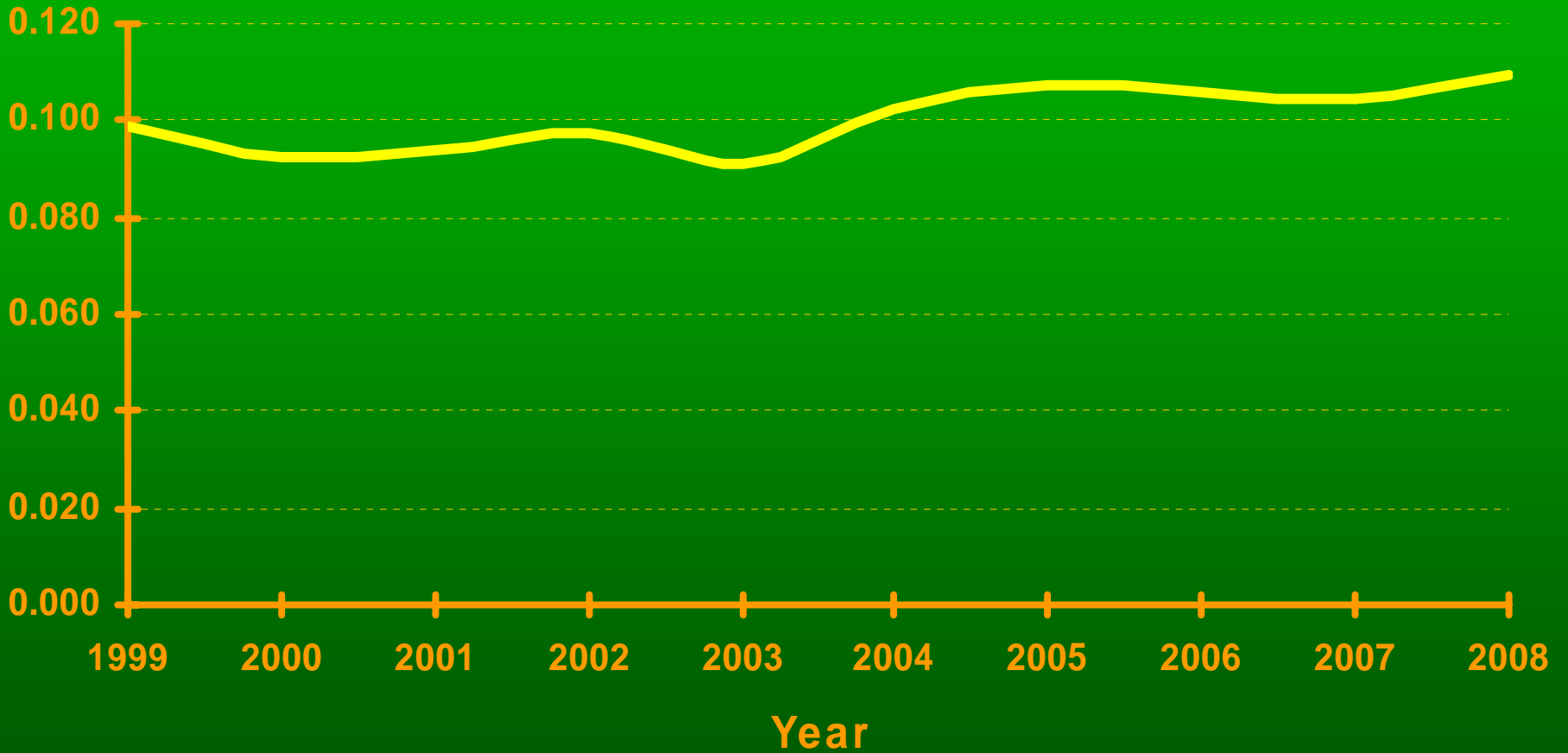
# Interior Spruce Mean Seed Price/Seedling (\$)



# Western Redcedar Mean Seed Price/Seedling (\$)



# Coastal Douglas-fir Mean Seed Price/Seedling (\$)

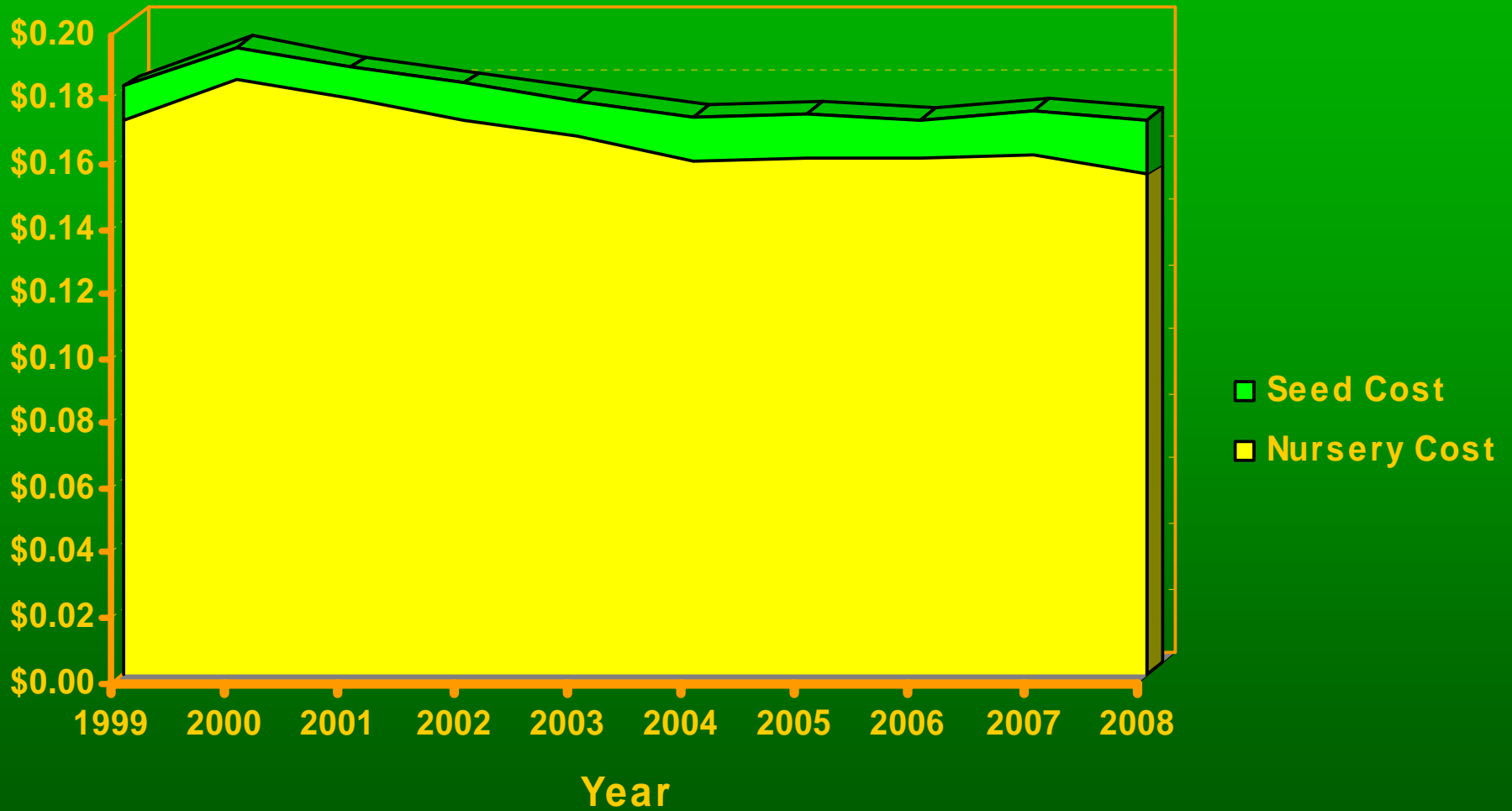


# Seed Price Trends

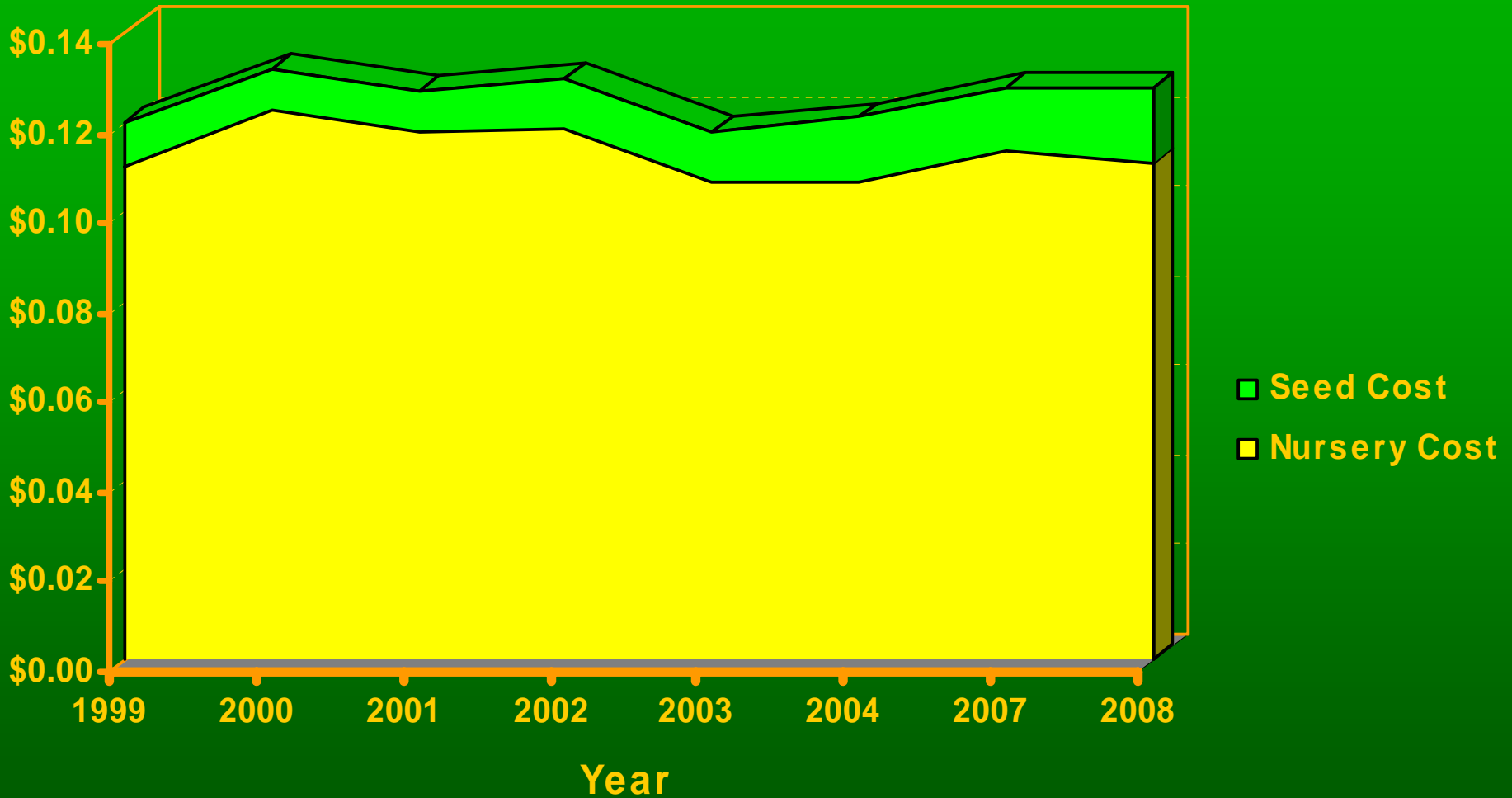
- Source of Seed
  - Seed Orchard
  - Wild Stand Collection
- Seed/Seedling Price Trends
  - Major Species
- Portion of Total Seedling Cost
  - Major Species and Block Type



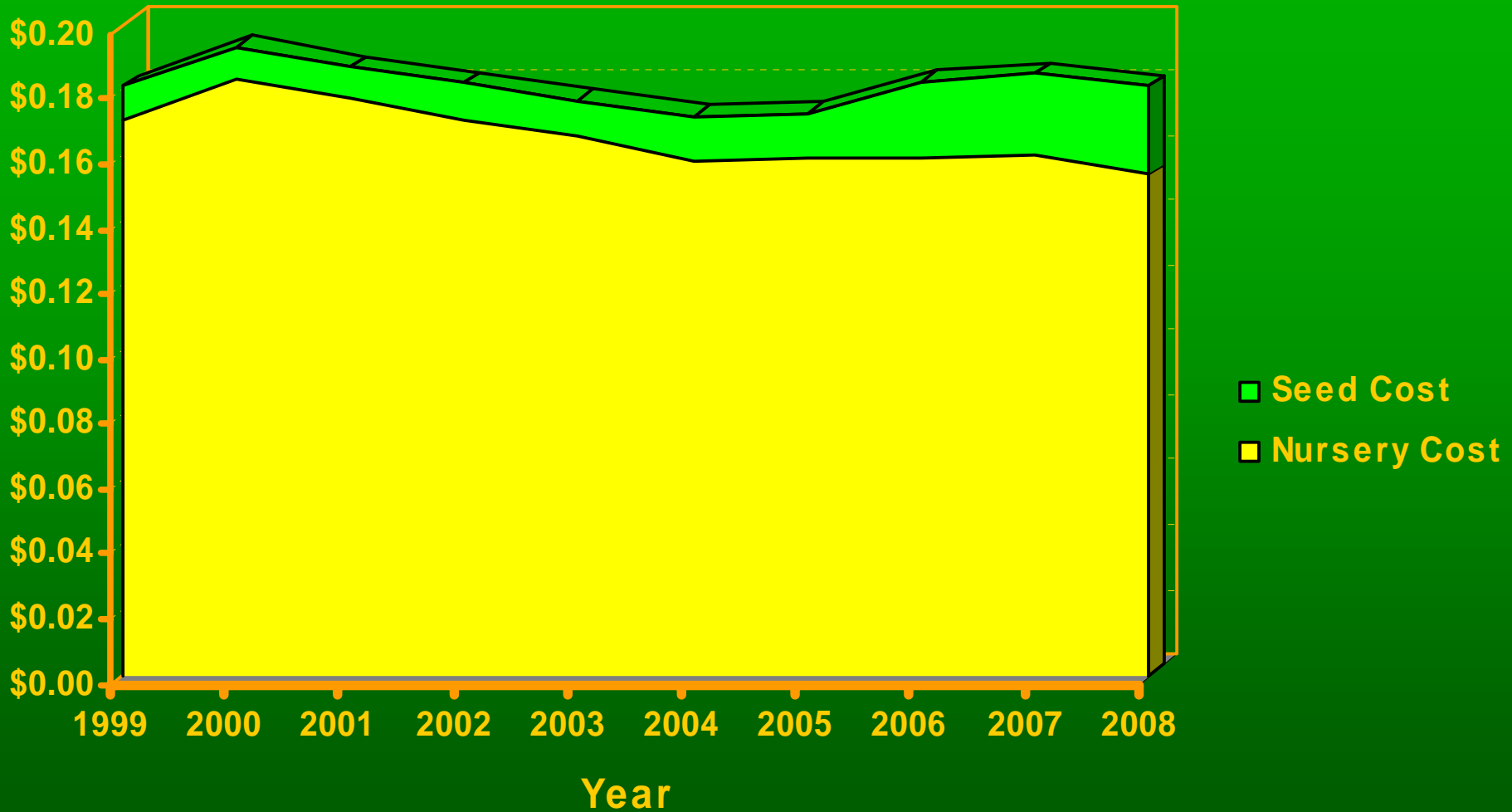
# PLI 112 Nursery & Seed Costs



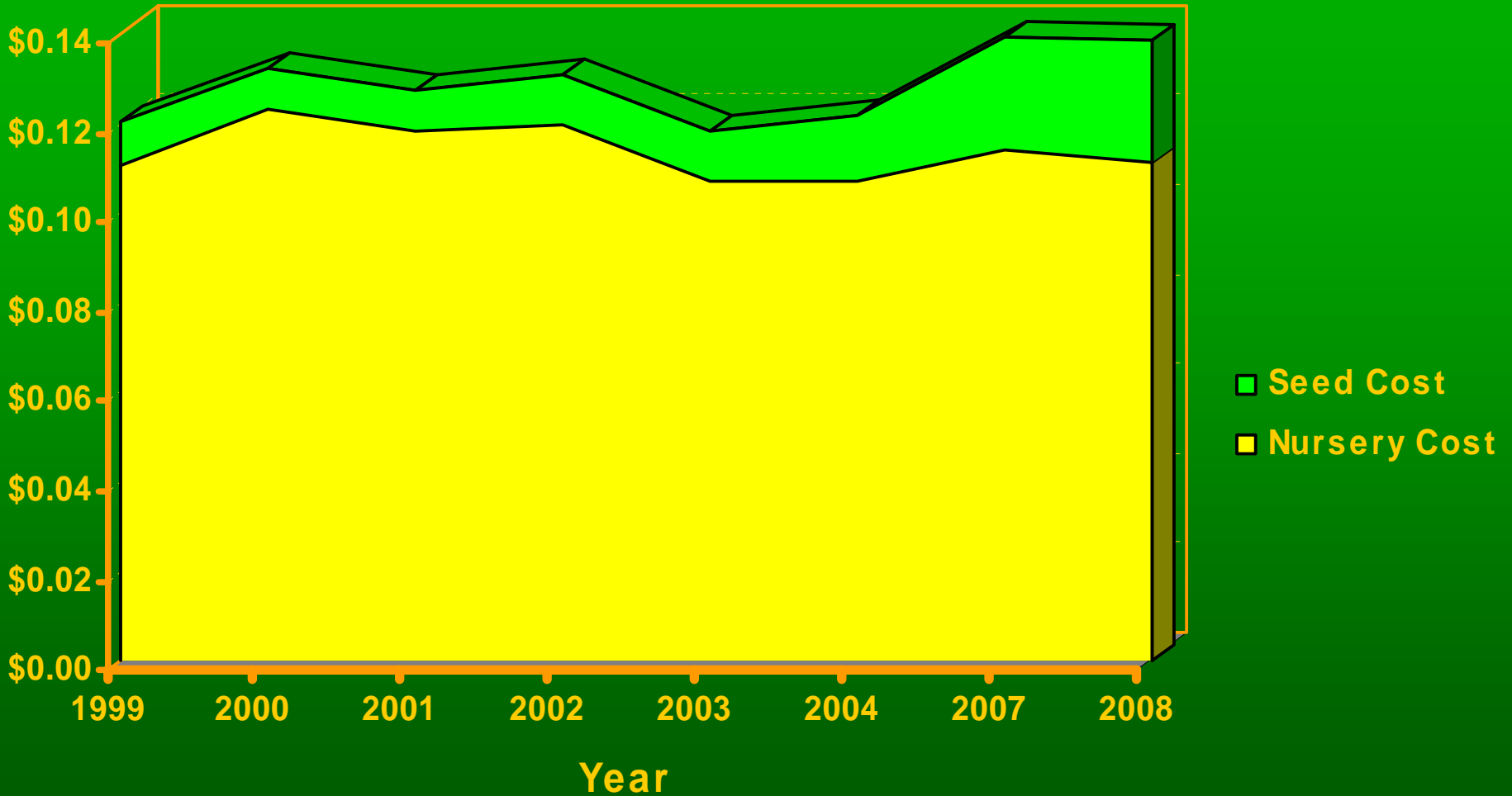
# PLI 160 Nursery & Seed Costs



# PLI 112 Nursery & Seed\* Costs

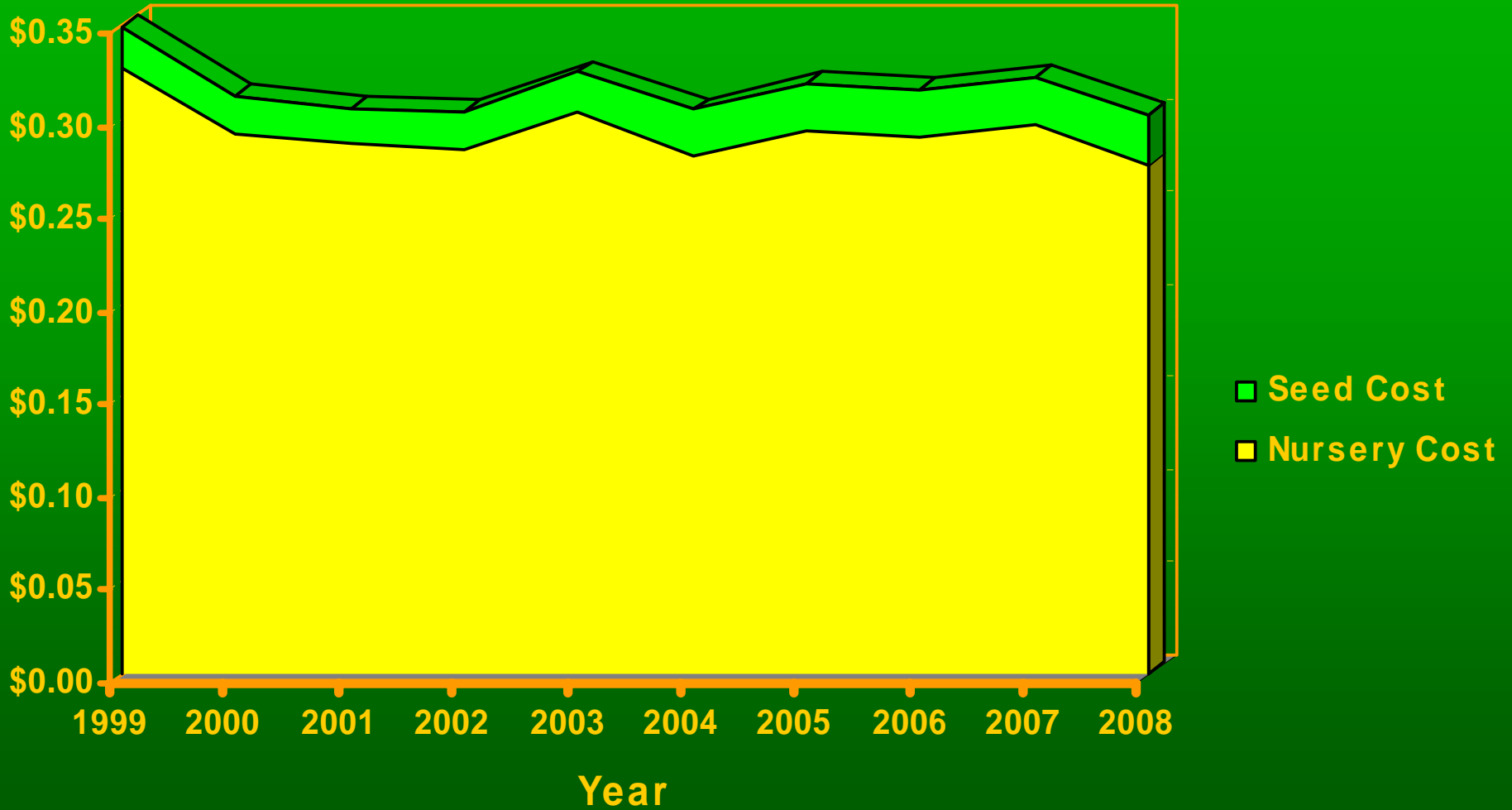


# PLI 160 Nursery & Seed Costs

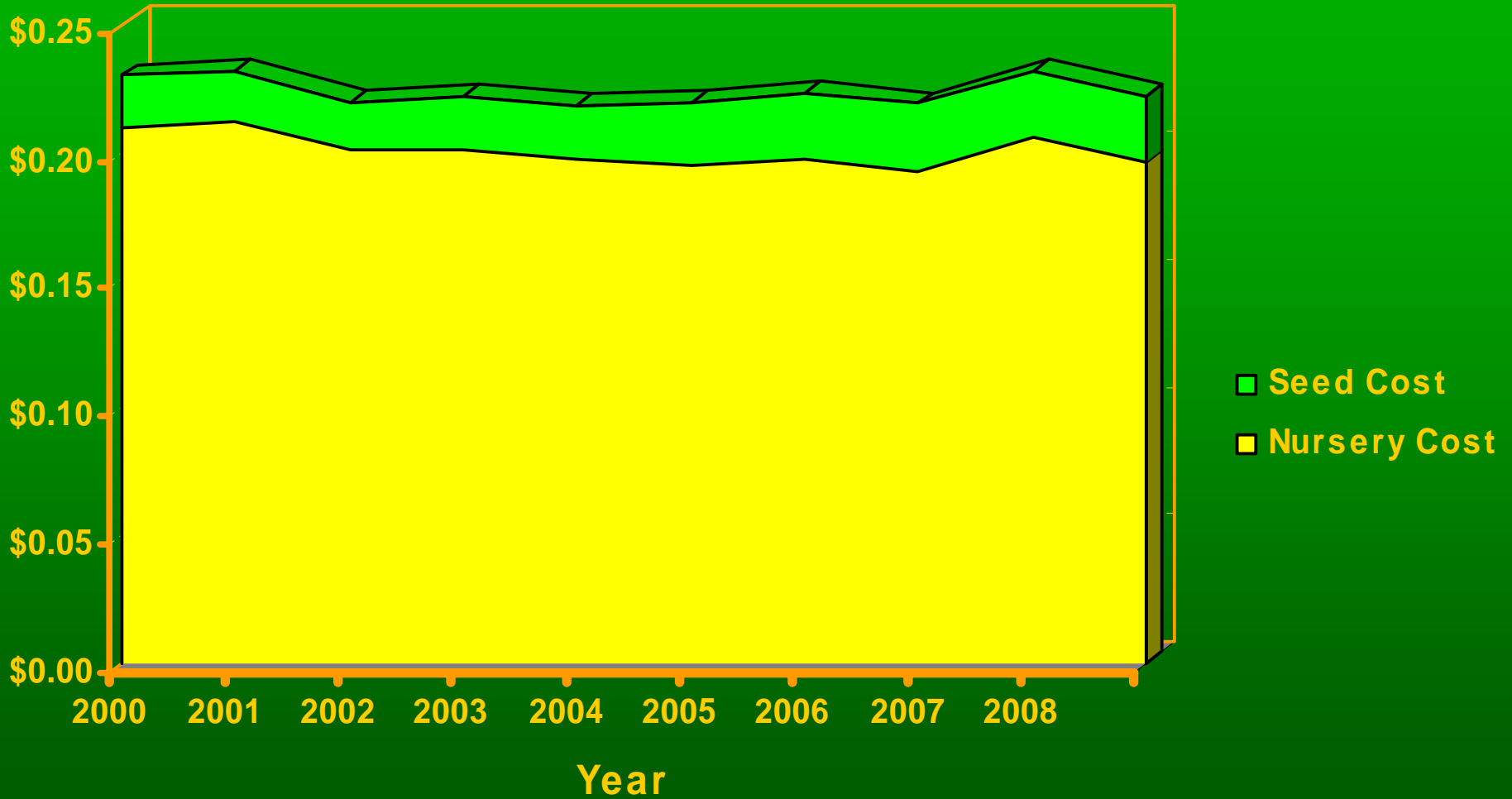




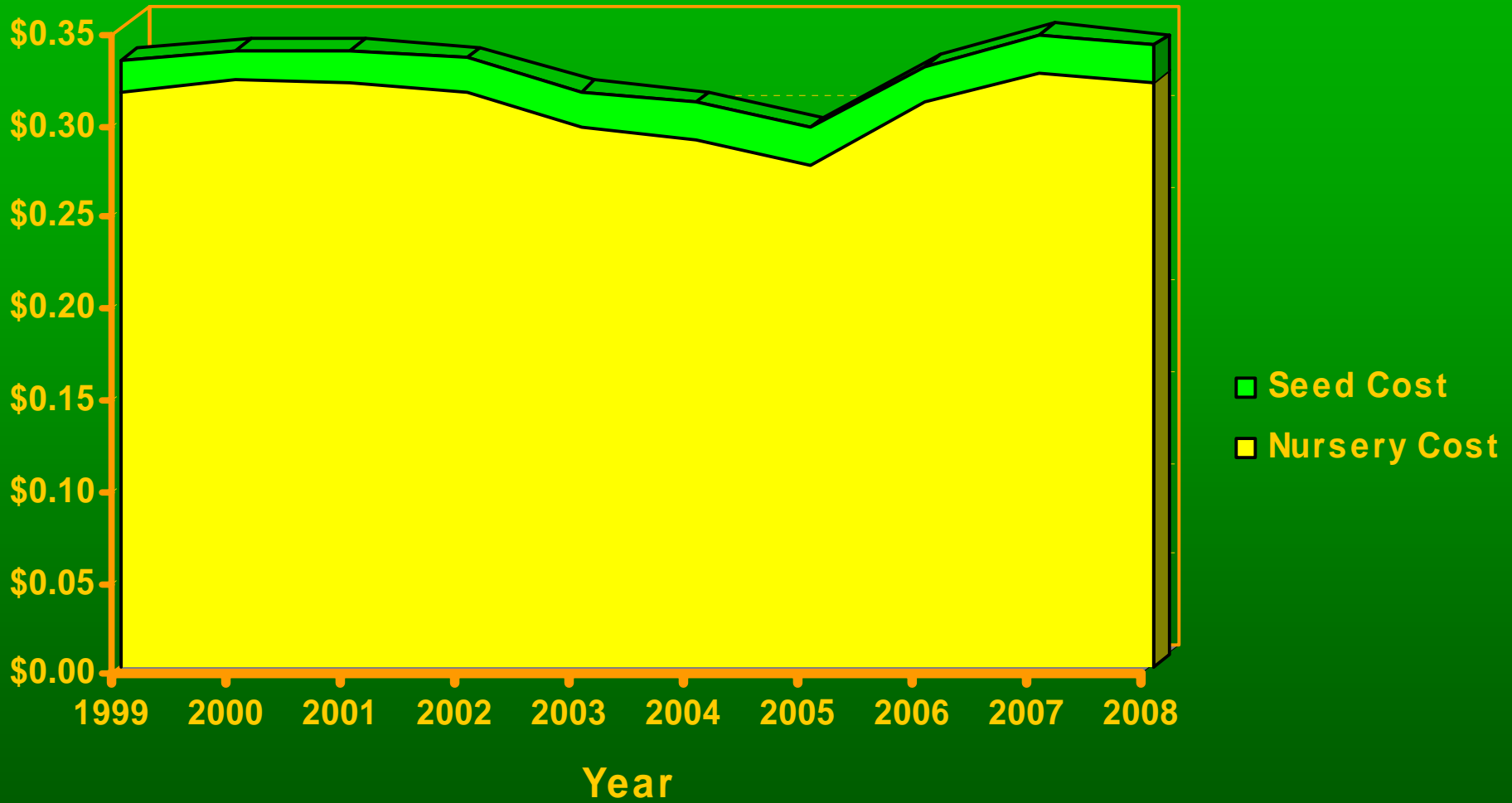
# SX 77 Nursery & Seed Costs



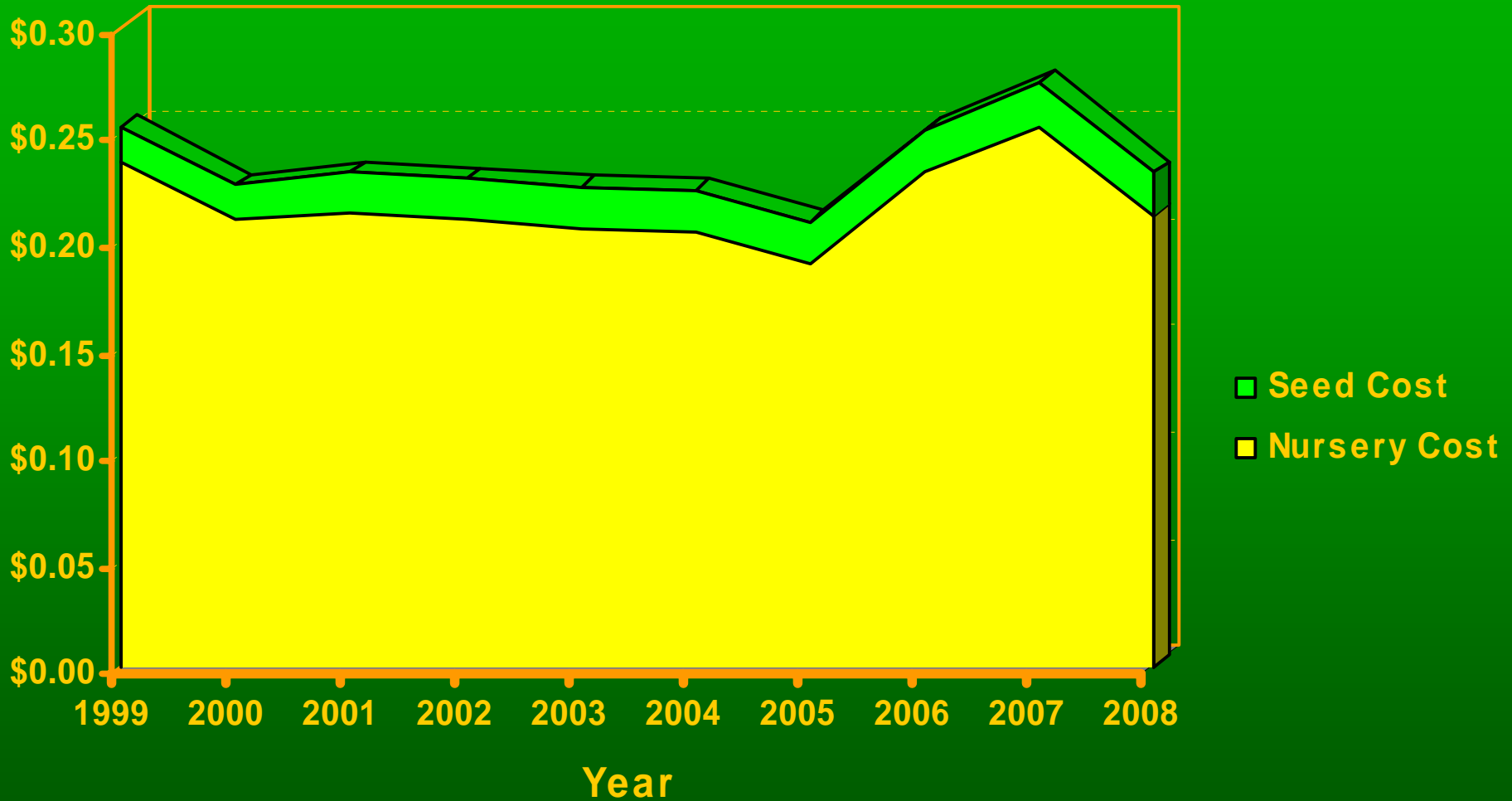
# SX 112 Nursery & Seed Costs



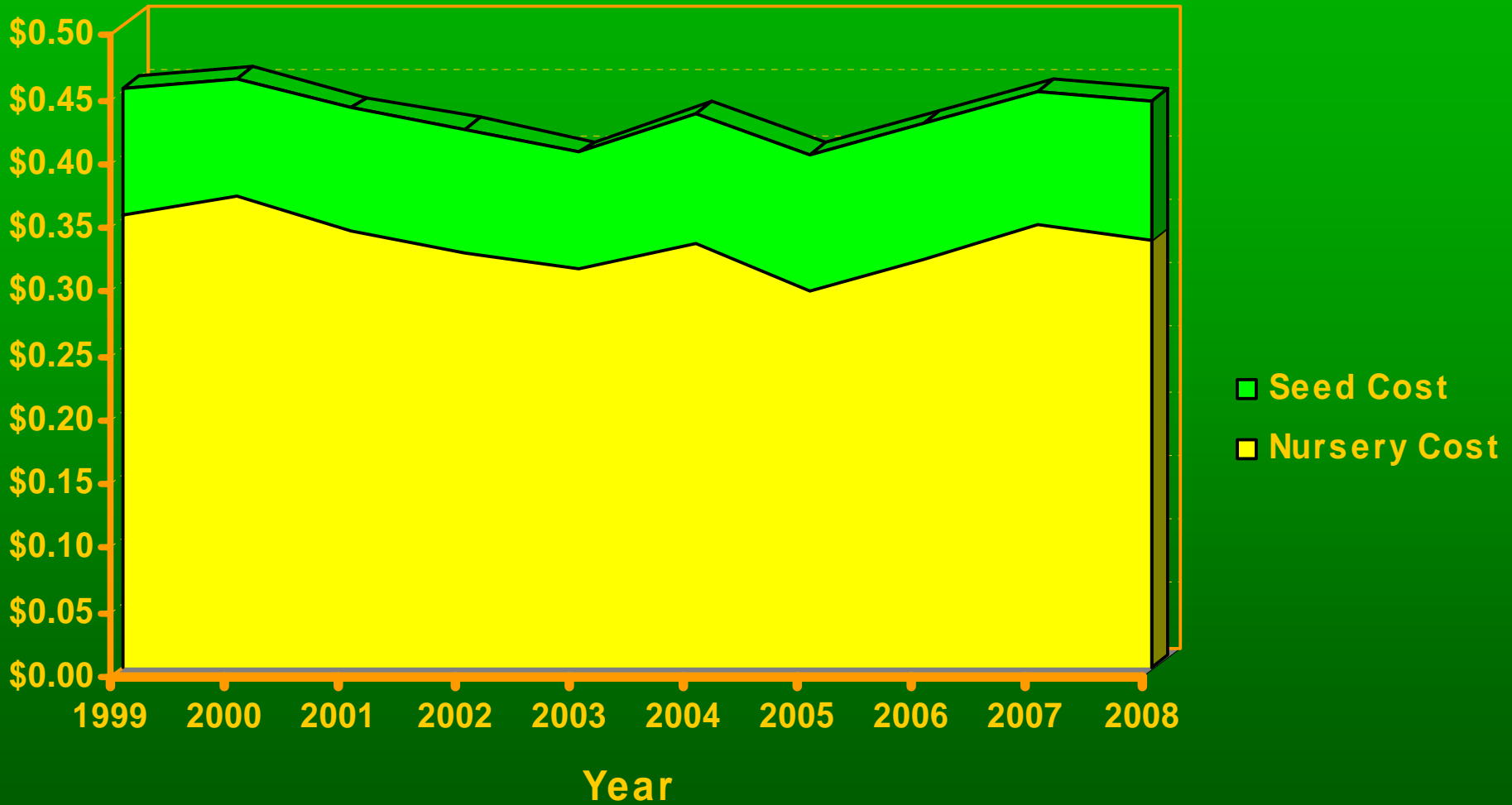
# CW 77 Nursery & Seed Costs



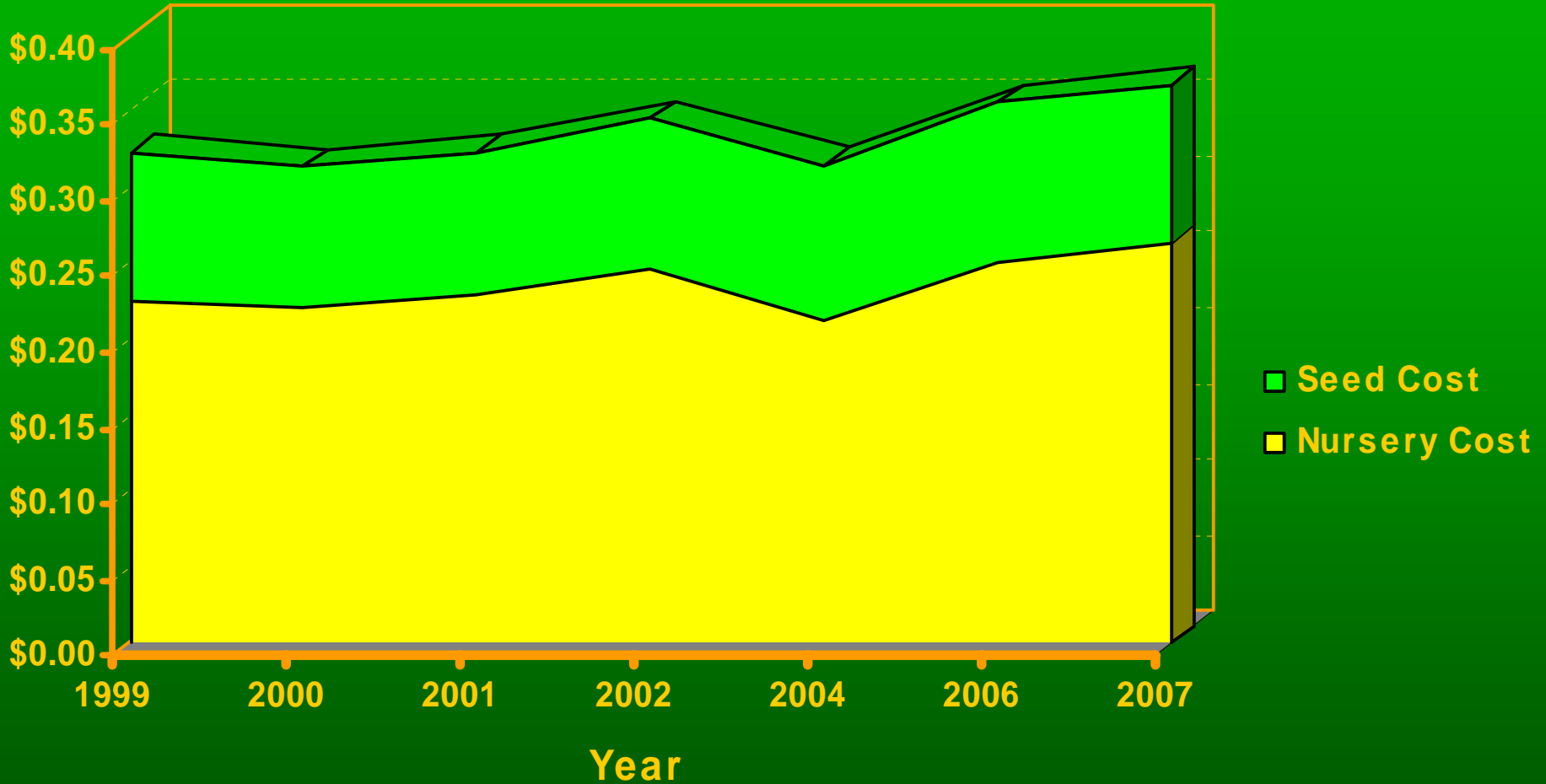
# CW 112 Nursery & Seed Costs



# FDC 77 Nursery & Seed Costs



# FDC 112 Nursery & Seed Costs



# Summary

- Seedling costs are dictated by species and stock type which is determined by planting program needs
- Nursery costs are currently very stable in spite of inflation and are likely as low as possible
- Some seed (lodgepole pine, interior Douglas-fir) has additional value resulting from scarcity of supply
- Using seed effectively provides an opportunity to control seedling prices and extend scarce and valuable seed

