

SPU # 36

Grand fir Maritime 1 - 700m
CONSERVATION -- GENECOLOGY -- SEEDLING USE

Annual planting (million): 0.05

Program category: Genecology

filename: BG M low July 12, 2015

GENETIC CONSERVATION STATUS

Conservation statistics

Seed planning unit (SPU) area	4,848,269	ha
Area protected within SPU	407,662	ha
Percentage of SPU area protected	8%	
Estimated genetic reserves with >5000 mature trees based on botanical sample data	1 or more	
Confirmed genetic reserves with >5000 mature trees based on forest inventory data	Uncertain	

Conservation status

Current in-situ protection status: Adequate

Probability of maintaining > 3 protected areas with adequate

population size given natural disturbance regimes: Uncertain *

* Ground truthing required as inventory data are less reliable for this species

For further information visit <http://www.genetics.forestry.ubc.ca/cfgc/>

GENECOLOGY

Issues:

Genecology studies and gene conservation are considered necessary to understand geographic patterns of gene variability and to ensure the genetic resource of this species does not become threatened due to urbanization.

Provenance testing:

Provenance tests planted in the late 1970's (4 test sites in the M zone).
20-year results available. Current transfer guidelines are based on data from these tests.
No further testing planned; existing sites will continue to be monitored.

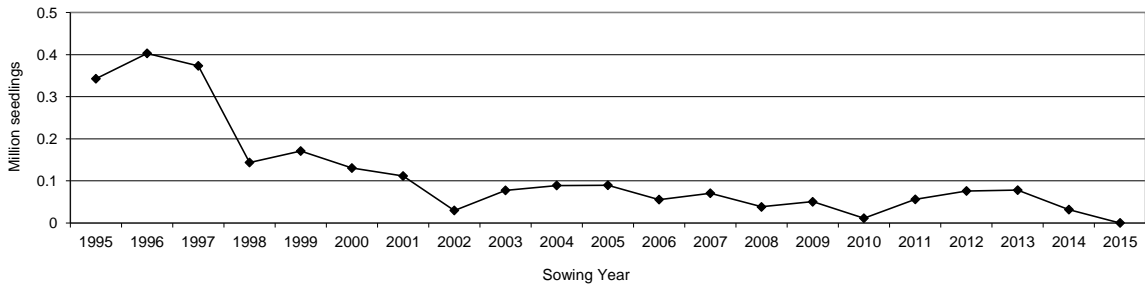
Projects:

About 45 Bg stands were surveyed in 2002 for suitability for genetic conservation and seed production. Four sites were identified as potentially suitable as B+ seed source areas. These stands surveyed do not include stands in provincial parks.

SEEDLING USE

5-year average seedling requests to SPAR (2011 - 2015) 0.05 million
No Class A seed available

Seedling Use Trend - 1995 to 2015
SPU 36 Bg M 0-700m



Notes:
- Seedling use data include 1/2 of adjacent overlap zones, where applicable
- Sowing year: Aug 1 to July 31 (i.e. 2015 sowing year starts Aug 1, 2014)

Seed production estimates are subject to change. When using this information for silviculture planning or timber supply analysis, contact the Tree Improvement Branch of the Ministry of Forests Lands and Natural Resource Operations to confirm data.

See SeedMap on www.for.gov.bc.ca/htl/seedmap for current inventory by Seed Planning Unit