

SPU # 27

Western red cedar Submaritime 200 to 1000m

CONSERVATION -- GENECOLOGY -- SEEDLING USE

Program category: Genecology

Annual planting (million): 0.58

Program rank: 41

filename: 27 Cw SM July 12, 2015

GENETIC CONSERVATION STATUS

Conservation statistics

Seed planning unit (SPU) area	3,474,595	ha
Area protected within SPU	440,547	ha
Percentage of SPU area protected	13%	
Estimated genetic reserves with >5000 mature trees based on botanical sample data	>4	
Confirmed genetic reserves with >5000 mature trees based on forest inventory data	31	

Conservation status

Current in-situ protection status: **Very well protected**
 Probability of maintaining > 3 protected areas with adequate population size given natural disturbance regimes: **Very high**

For further information visit <http://www.genetics.forestry.ubc.ca/cfgc/>

GENECOLOGY

Issues:

1. The current seed zone boundary between the Maritime and Submaritime zones is not supported by field testing, and may be conservative with respect to the movement of orchard seed from the Maritime to parts of the Submaritime.
2. Self-pollination in wild stands is potentially high. Inbreeding reduces growth potential of wild-stand seed collections.
3. North-south seed transfer guidelines are not well supported by field-testing at this time. As current research tests age, data will improve, allowing refinement of transfer limits.

Provenance testing:

Tests established in 1990 with 10 sources from the geographical range of red cedar.
 Polycross progeny tests established for the Maritime zone include selected parents from the Submaritime. Some test sites are established in the SM both in the south and in the north. Results will support decisions on zone boundaries and on north-south transfer of seed.

Projects:

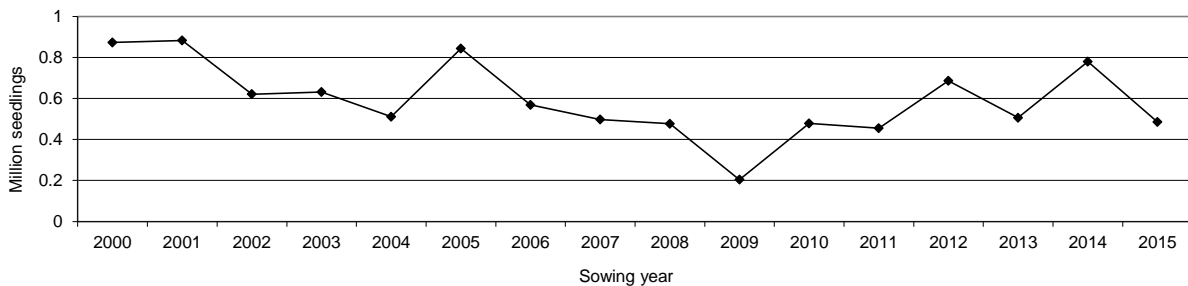
Seed collection in wild stands: GA induction and collection methods to reduce self-pollination

SEEDLING USE

5-year average seedling requests to SPAR (2011 - 2015) 0.58 million

Estimated years of class-A seed in storage 0.0 years

**Seedling Use Trend - 1996 to 2015
SPU 27 Cw SM 200-1000m**



Notes:

- Seedling use data include 1/2 of adjacent overlap zones, where applicable
- Sowing year: Aug 1 to July 31 (i.e. 2015 sowing year starts Aug 1, 2014)