

Version 2.0
Owner: Thomas Chen
Date: May 2009

Data preparation & collection

Data Validation

Data Entry

Data Verification

RVTL Data Quality Sampling

Data Cleaning

Data Analysis & Reporting

Accept random openings in IMS

Prepare map, Silverculture Prescription, field gear, etc

Field data collection

Peer review or self data validation (data correction)

Data pass (peer) review?

Enter data in IMS

Can data be saved/submitted in IMS? (data quality rules and warning)

If possible, verify data entry accuracy

Make correction if appropriate

Notify Data Co-ordinator when completed the resource value and/or the field season

RVTLs and Data Co-ordinator request checklists for DQ check

Upon receipt of request, send a photocopy to Data Co-ordinator (maps, SP, photos, etc) and keep the original checklists

Data Co-ordinator tracks the checklists

RVTLs validated the checklists and data co-ordinator returned to the district for possible data re-entry & correction

When all districts confirmed the completion of the field season, data team runs the final data quality check using Certify and data quality queries

Data team and RVTLs investigate data quality fallacy and make corrections

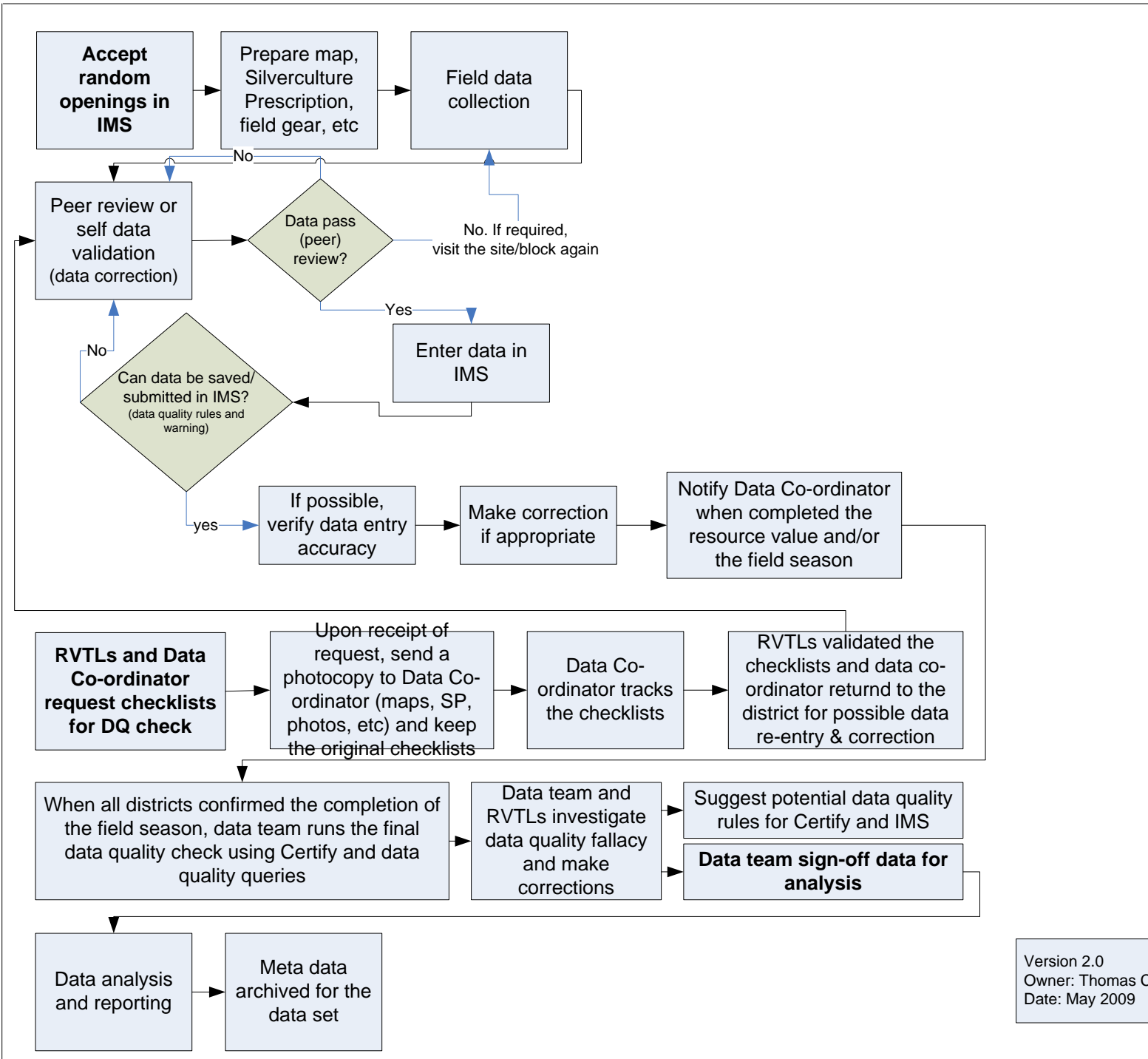
Suggest potential data quality rules for Certify and IMS

Data team sign-off data for analysis

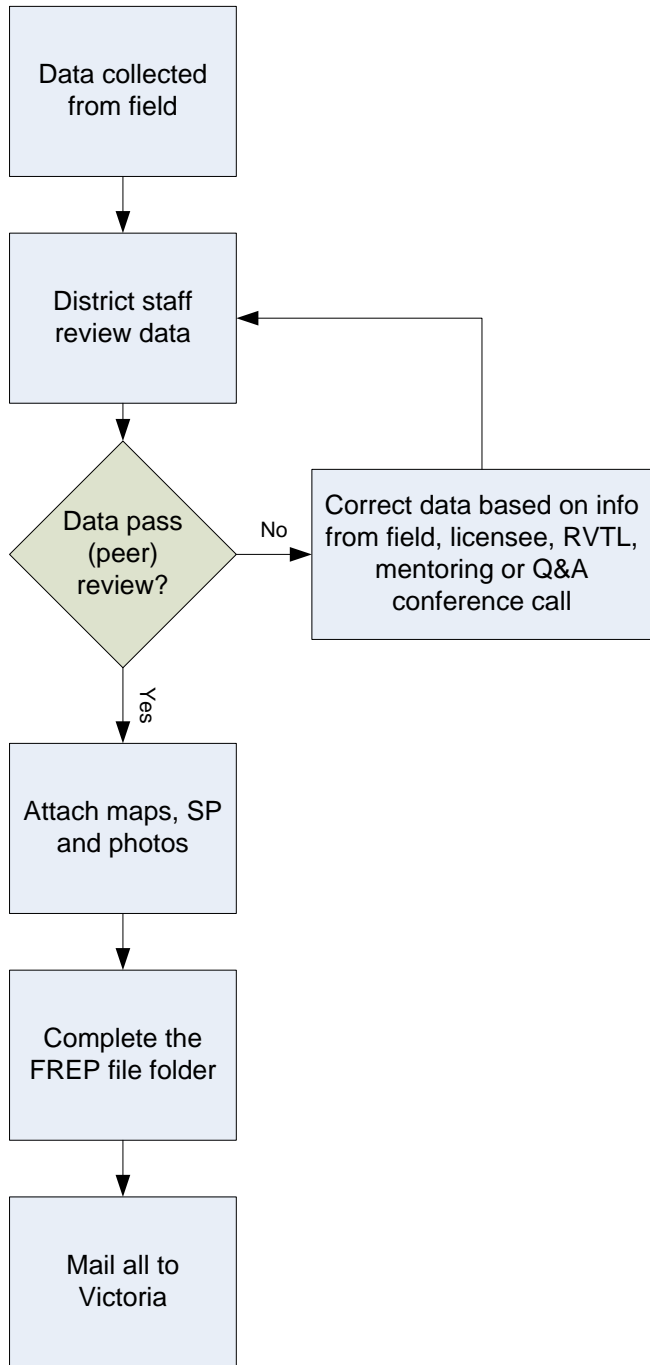
Data analysis and reporting

Meta data archived for the data set

Version 2.0
Owner: Thomas Chen
Date: May 2009

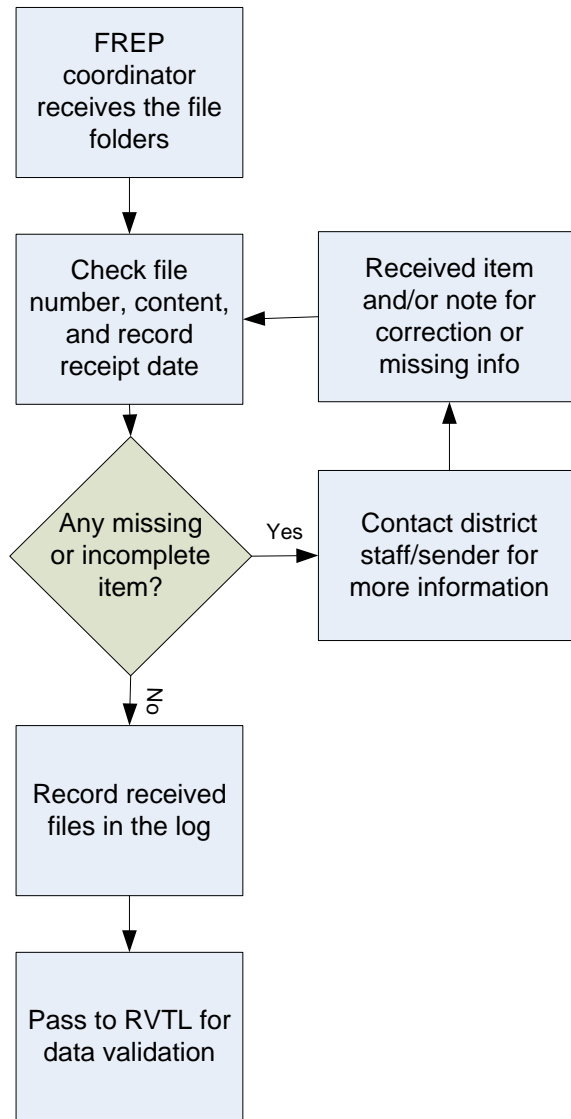


Data collected

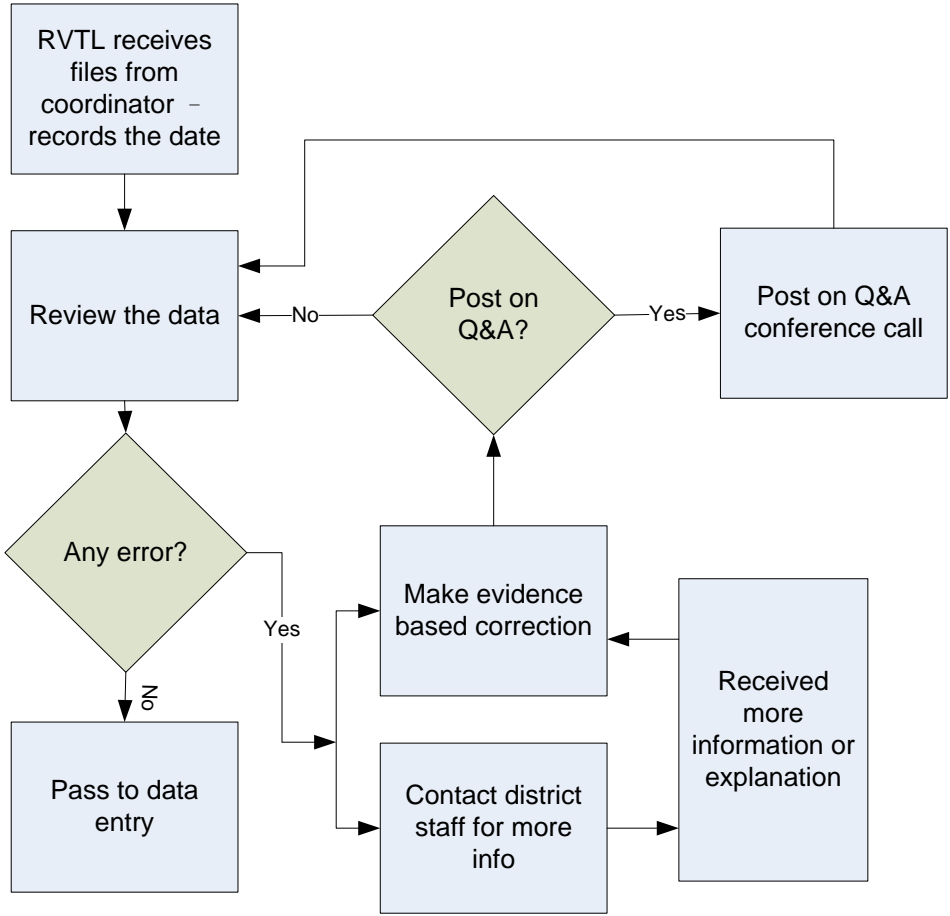


Version 2.0
Owner: Thomas Chen
Date: May 2009

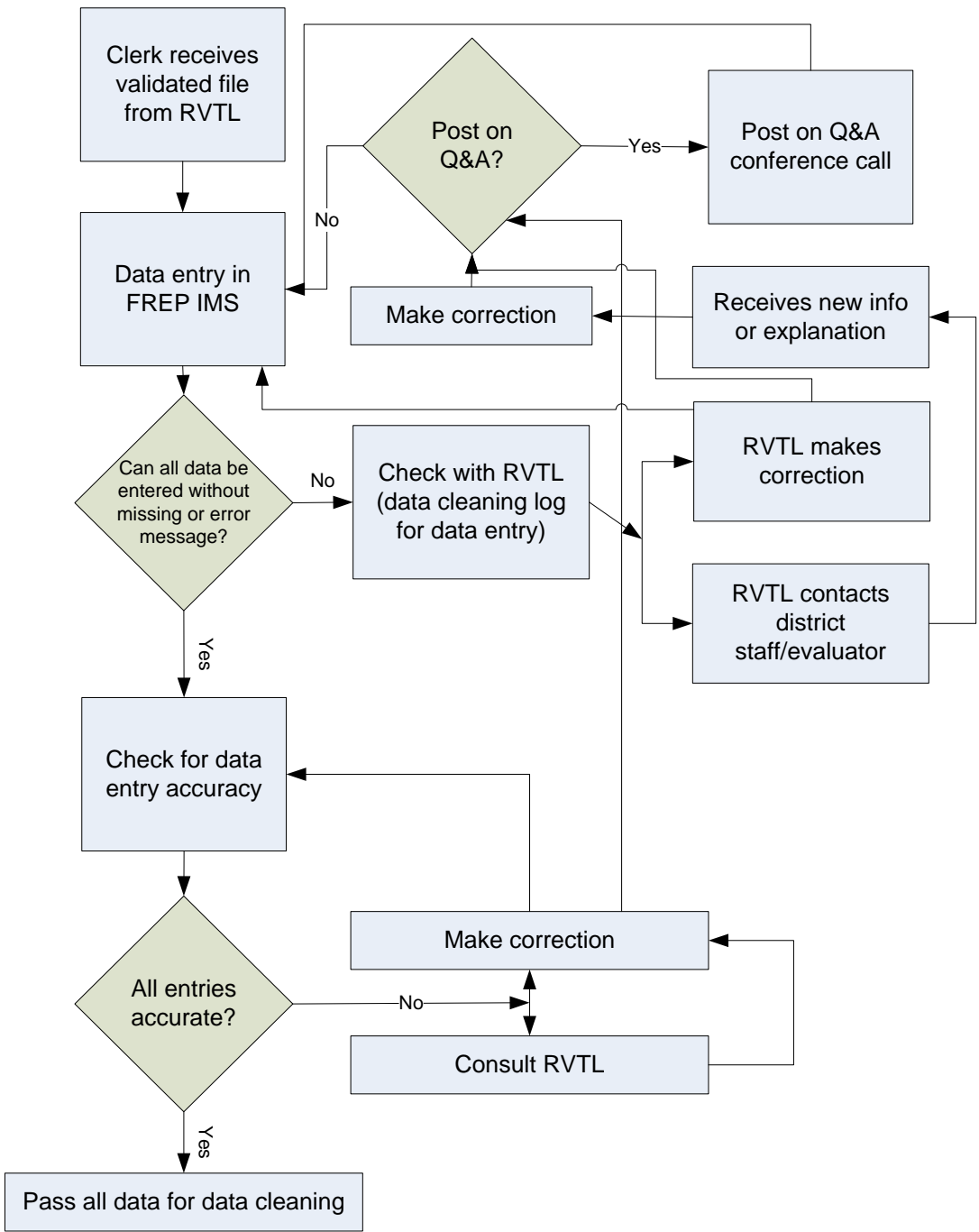
**Data
Reception**



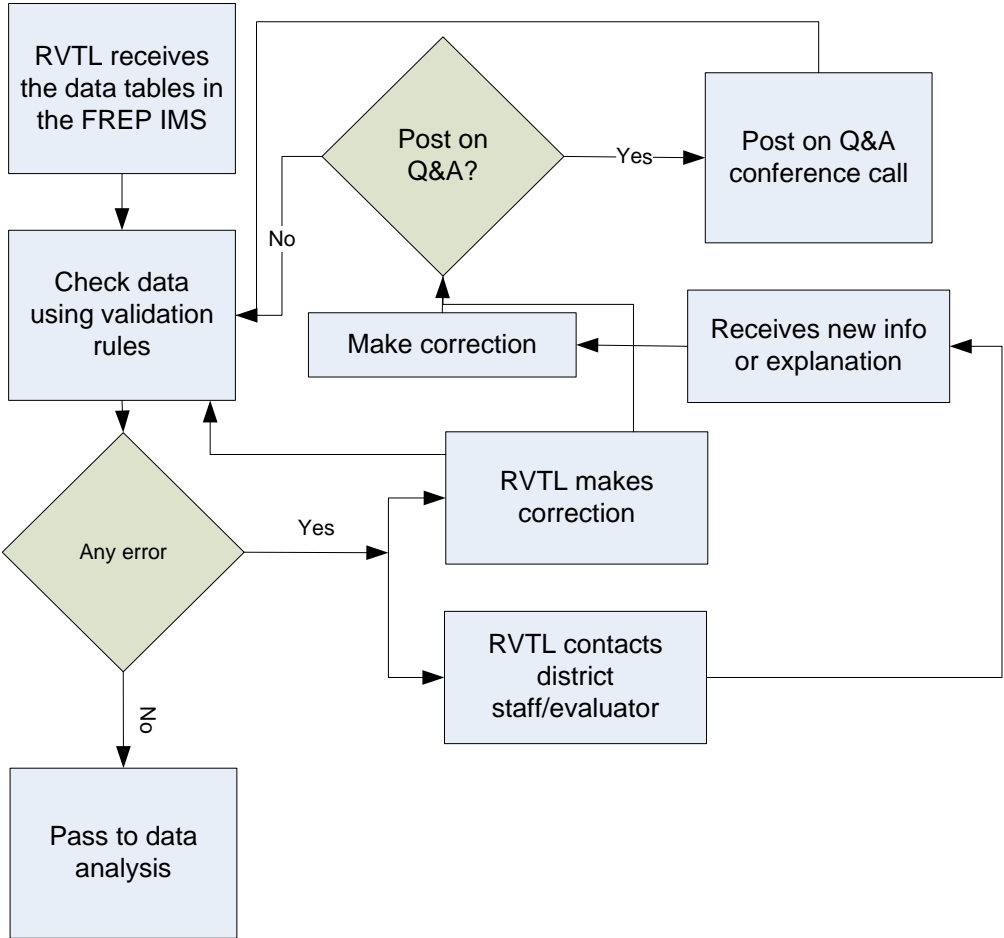
**Data
Validation**



Data Entry



Data Cleaning



Data Analysis

