
B.C. Forest Product Exports – March 2015

➤ Highlight of Exports in March 2015, compared to March 2014:

- B.C. forest product exports totalled \$1.21 billion, up 49.8% from \$0.81 billion.
- Share of export value by market: U.S. (45.0%, down from 55.9%), China + Hong Kong (32.4%, up from 26.3%), Japan (8.5%, up from 7.9%) and other destinations (14.2%, up from 9.8%).
- Share of export value by product: Softwood Lumber (47.2%, up from 39.6%), Pulp (24.0%, down from 25.3%), Other Wood Products* (13.1%, down from 15.1%), Other Paper Products** (8.9%, down from 11.4%) and Logs (6.8%, down from 8.8%).

* Note that in March 2014 there was a trucker strike at Port Metro Vancouver which reduced exports in that month.

➤ Highlight of Exports YTD 2015 (March), compared to YTD 2014 (March):

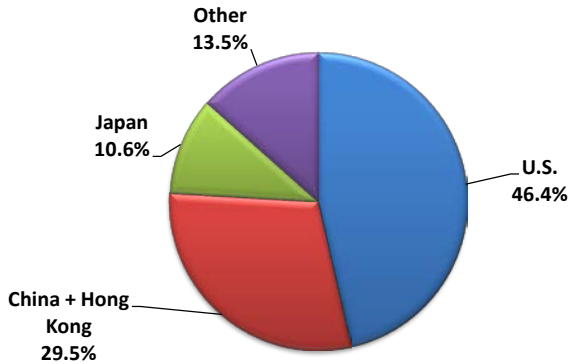
- B.C. forest product exports totalled \$3.18 billion, up 4.8% from \$2.69 billion.
- Share of export value by market: U.S. (47.0%, up from 46.4%), China + Hong Kong (30.1%, up from 29.5%), Japan (9.0%, down from 10.6%) and other destinations (13.9%, up from 13.5%).
- Share of export value by product: Softwood Lumber (46.2%, up from 43.0%), Pulp (24.8%, down from 26.5%), Other Wood Products* (13.4%, up from 12.7%), Other Paper Products** (9.3%, down from 10.2%) and Logs (6.3%, down from 7.5%).

**Includes wood products such as Veneer, OSB, Plywood, Siding, Poles, Chips, Ties, Mouldings, Panels, Furniture, Seats, Pellets, Shake and Shingles, etc.*

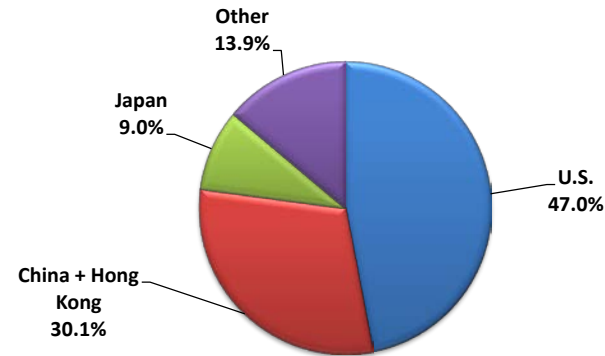
***Includes paper products such as Paper, Cards, Cartons, Rolls, Trays, Containers and Sacks & Bags, etc.*

B.C. Forest Product Exports - March 2015

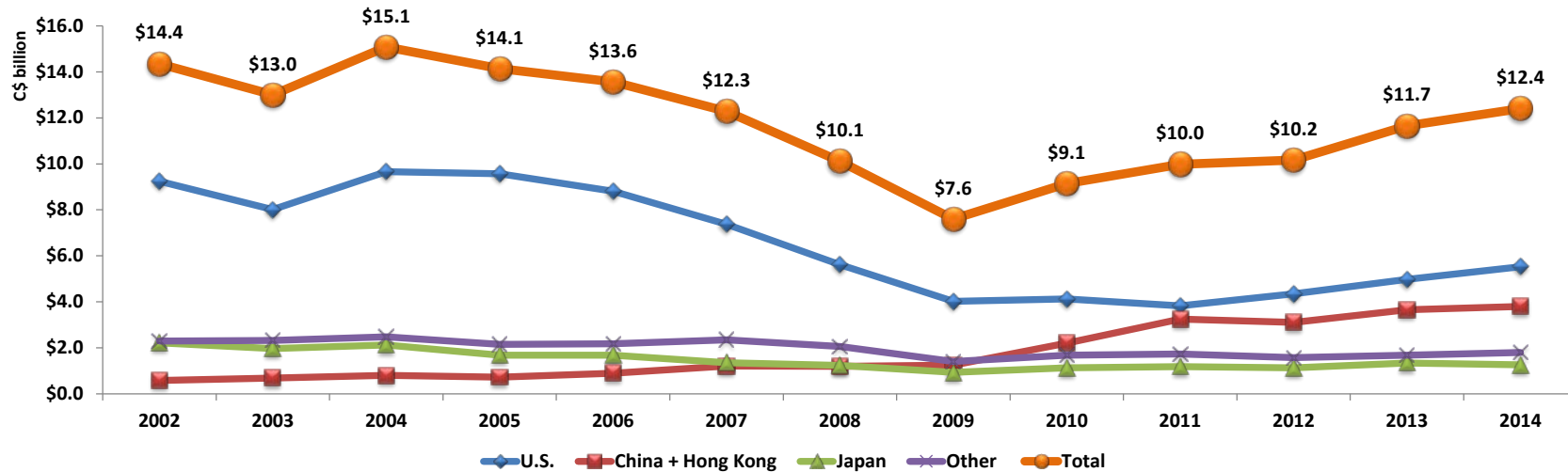
**B.C. Forest Product Export Value
(C\$2.69 billion)
Share by Market, YTD March 2014**



**B.C. Forest Product Export Value
(C\$3.18 billion)
Share by Market, YTD March 2015**



B.C. Forest Product Export Value by Market, 2002 - 2014



*YTD = Year to date

Data Source: B.C. Stats tabulation from Statistics Canada data

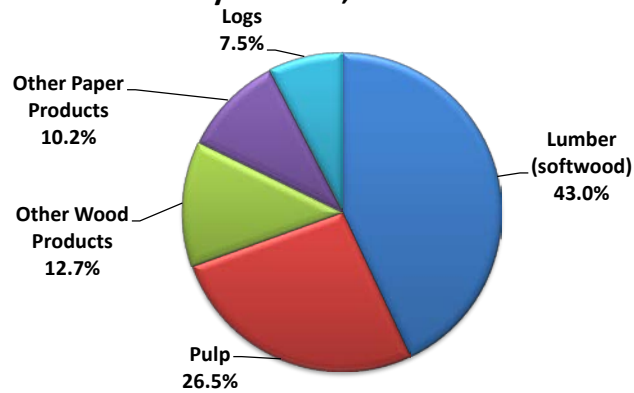
Prepared by Alex Barnes of Competitiveness and Innovation Branch, Ministry of Forests, Lands, and Natural Resource Operations

B.C. Forest Product Export Value (C\$ billion) and Share (%) by Market Current Month (March) and YTD, 2014 and 2015										
Destinations	Current Month 2014		Current Month 2015		Change %	YTD 2014		YTD 2015		Change %
	\$	Share %	\$	Share %		\$	Share %	\$	Share %	
U.S.	0.45	55.9%	0.55	45.0%	20.4%	1.25	46.4%	1.49	47.0%	19.9%
China + Hong Kong	0.21	26.3%	0.39	32.4%	84.6%	0.79	29.5%	0.96	30.1%	20.7%
Japan	0.06	7.9%	0.10	8.5%	60.5%	0.28	10.6%	0.29	9.0%	0.6%
Other	0.08	9.8%	0.17	14.2%	115.9%	0.36	13.5%	0.44	13.9%	22.0%
Total	0.81	100.0%	1.21	100.0%	49.8%	2.69	100.0%	3.18	100.0%	18.4%

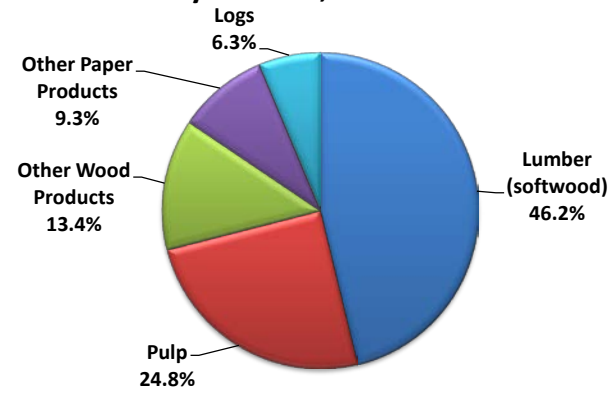
B.C. Forest Product Export Value (C\$ billion) by Market, 2002 to 2014													
Destinations	2002	2003	2004	2005	2006	2007	2008	2009	2010	2011	2012	2013	2014
U.S.	9.25	8.01	9.66	9.57	8.82	7.37	5.61	4.02	4.13	3.83	4.34	4.97	5.53
China + Hong Kong	0.59	0.69	0.81	0.73	0.89	1.21	1.20	1.25	2.20	3.25	3.11	3.66	3.80
Japan	2.22	1.97	2.13	1.68	1.68	1.35	1.24	0.93	1.14	1.18	1.13	1.34	1.26
Other	2.30	2.33	2.48	2.15	2.17	2.35	2.06	1.40	1.68	1.73	1.57	1.68	1.80
Total	14.35	13.00	15.08	14.13	13.56	12.28	10.11	7.60	9.14	9.98	10.16	11.65	12.40

B.C. Forest Product Export Value Share (%) by Market, 2002 to 2014													
Destinations	2002	2003	2004	2005	2006	2007	2008	2009	2010	2011	2012	2013	2014
U.S.	64.4%	61.7%	64.1%	67.7%	65.0%	60.0%	55.5%	52.8%	45.1%	38.3%	42.8%	42.7%	44.6%
China + Hong Kong	4.1%	5.3%	5.3%	5.2%	6.6%	9.9%	11.8%	16.5%	24.1%	32.6%	30.6%	31.4%	30.7%
Japan	15.5%	15.1%	14.1%	11.9%	12.4%	11.0%	12.3%	12.3%	12.4%	11.8%	11.2%	11.5%	10.1%
Other	16.0%	17.9%	16.5%	15.2%	16.0%	19.1%	20.4%	18.4%	18.3%	17.3%	15.5%	14.4%	14.5%
Total	100.0%	100.0%	100.0%	100.0%	100.0%	100.0%	100.0%	100.0%	100.0%	100.0%	100.0%	100.0%	100.0%

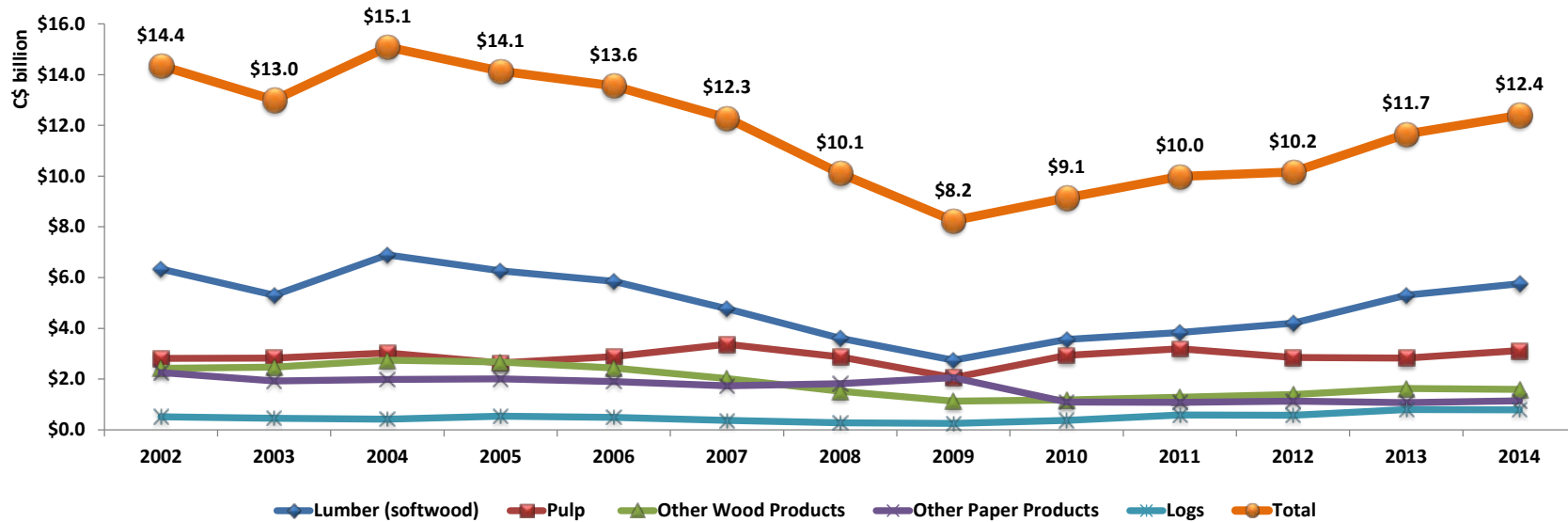
**B.C. Forest Product Export Value
(C\$2.69 billion)
Share by Product, YTD March 2014**



**B.C. Forest Product Export Value
(C\$3.18 billion)
Share by Product, YTD March 2015**



B.C. Forest Product Export Value by Product, 2002 - 2014

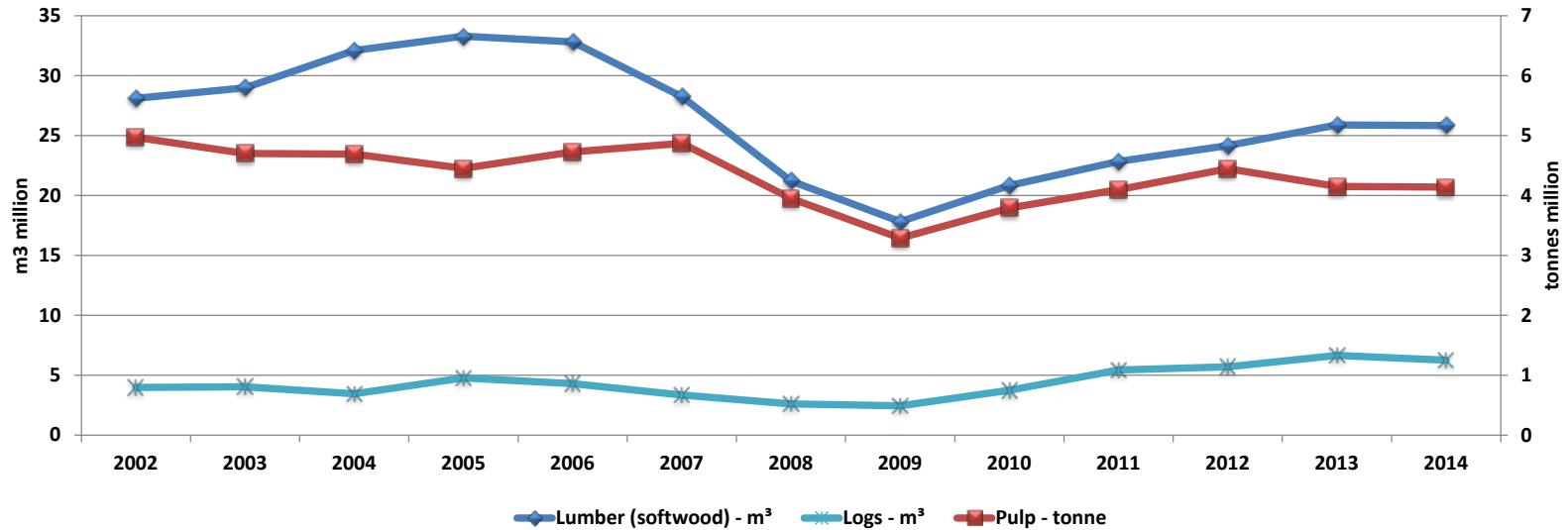


B.C. Forest Product Export Value (C\$ billion) and Share (%) by Product Current Month (March) and YTD, 2014 and 2015										
Products Category	Current Month 2014		Current Month 2015		Change %	YTD 2014		YTD 2015		Change %
	\$	Share %	\$	Share %		\$	Share %	\$	Share %	
Lumber (softwood)	0.32	39.6%	0.57	47.2%	78.8%	1.15	43.0%	1.47	46.2%	27.3%
Pulp	0.20	25.3%	0.29	24.0%	42.5%	0.71	26.5%	0.79	24.8%	10.6%
Other Wood Products	0.12	15.1%	0.16	13.1%	30.2%	0.34	12.7%	0.43	13.4%	25.0%
Other Paper Products	0.09	11.4%	0.11	8.9%	17.6%	0.28	10.2%	0.29	9.3%	7.0%
Logs	0.07	8.8%	0.08	6.8%	16.2%	0.20	7.5%	0.20	6.3%	-1.0%
Total	0.81	100%	1.21	100.0%	49.8%	2.69	100.0%	3.18	100.0%	18.4%

B.C. Forest Product Export Value (C\$ billion) by Product, 2002 to 2014													
Products Category	2002	2003	2004	2005	2006	2007	2008	2009	2010	2011	2012	2013	2014
Lumber (softwood)	6.34	5.31	6.89	6.27	5.85	4.77	3.61	2.75	3.56	3.83	4.20	5.31	5.75
Pulp	2.81	2.83	3.03	2.64	2.89	3.38	2.88	2.06	2.94	3.20	2.85	2.83	3.12
Other Wood Products	2.42	2.47	2.74	2.68	2.44	2.02	1.52	1.13	1.18	1.28	1.39	1.63	1.59
Other Paper Products	2.26	1.93	1.99	2.01	1.90	1.74	1.82	2.06	1.10	1.08	1.13	1.08	1.14
Logs	0.52	0.46	0.43	0.53	0.49	0.37	0.28	0.25	0.37	0.59	0.58	0.80	0.78
Total	14.35	13.00	15.08	14.13	13.56	12.28	10.11	8.24	9.14	9.98	10.16	11.65	12.40

B.C. Forest Product Export Value Share (%) by Product, 2002 to 2014													
Products Category	2002	2003	2004	2005	2006	2007	2008	2009	2010	2011	2012	2013	2014
Lumber (softwood)	44.2%	40.9%	45.7%	44.4%	43.1%	38.9%	35.7%	33.4%	38.9%	38.4%	41.4%	45.6%	46.4%
Pulp	19.6%	21.7%	20.1%	18.7%	21.3%	27.5%	28.5%	25.0%	32.1%	32.0%	28.1%	24.3%	25.2%
Other Wood Products	16.9%	19.0%	18.2%	19.0%	18.0%	16.5%	15.1%	13.7%	12.9%	12.9%	13.7%	14.0%	12.9%
Other Paper Products	15.7%	14.9%	13.2%	14.2%	14.0%	14.2%	18.0%	25.0%	12.0%	10.8%	11.1%	9.2%	9.2%
Logs	3.6%	3.5%	2.8%	3.8%	3.6%	3.0%	2.7%	3.0%	4.1%	5.9%	5.7%	6.9%	6.3%

B.C. Forest Product Export Volume by Product, 2002 - 2014

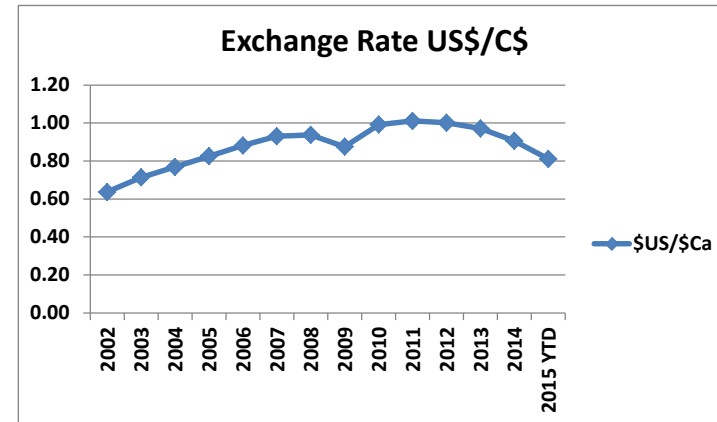


B.C. Forest Products Export Volume (million) by Product Current Month (March) and YTD, 2014 and 2015						
Products Category	Current Month 2014	Current Month 2015	Change %	YTD 2014	YTD 2015	Change %
Lumber (softwood) - m ³	1.44	2.37	63.9%	5.17	6.11	18.1%
Pulp - tonne	0.25	0.37	44.8%	0.92	0.98	7.1%
Logs - m ³	0.56	0.68	20.9%	1.62	1.60	-1.5%

B.C. Forest Products Export Volume (million) by Product, 2002 to 2014													
Products Category	2002	2003	2004	2005	2006	2007	2008	2009	2010	2011	2012	2013	2014
Lumber (softwood) - m ³	28.11	29.00	32.11	33.30	32.83	28.25	21.21	17.82	20.85	22.84	24.16	25.88	25.85
Pulp - tonne	4.97	4.70	4.69	4.45	4.73	4.87	3.95	3.29	3.79	4.10	4.45	4.15	4.14
Logs - m ³	3.97	4.05	3.46	4.77	4.31	3.34	2.62	2.46	3.74	5.45	5.71	6.67	6.27

B.C. Forest Product Export Value (C\$ billion) and Share (%) by Product and Major Market, YTD March 2015										
Products Category	U.S.		China + Hong Kong		Japan		Other		Total	
	\$	Share %	\$	Share %	\$	Share %	\$	Share %	\$	Share %
Lumber (softwood)	0.81	54.4%	0.32	33.8%	0.18	62.4%	0.15	34.7%	1.47	46.2%
Pulp	0.11	7.1%	0.51	52.8%	0.04	14.9%	0.13	30.5%	0.79	24.8%
Other Wood Products	0.34	22.8%	0.00	0.2%	0.02	7.9%	0.06	14.1%	0.43	13.4%
Other Paper Products	0.21	14.2%	0.02	2.4%	0.00	0.7%	0.06	12.9%	0.29	9.3%
Logs	0.02	1.5%	0.10	10.7%	0.04	14.1%	0.03	7.8%	0.20	6.3%
Total	1.49	100.0%	0.96	100.0%	0.29	100.0%	0.44	100.0%	3.18	100.0%

Top 3 Export Markets by Product, Based on Value, YTD March 2015						
Rank by Share	Lumber (softwood)		Pulp		Logs	
	Country	Share %	Country	Share %	Country	Share %
First	U.S.	55.3%	China + Hong Kong	64.1%	China + Hong Kong	51.3%
Second	China + Hong Kong	22.0%	U.S.	13.4%	Japan	20.1%
Third	Japan	12.2%	Indonesia	5.6%	South Korea	16.4%
Other	Other	10.4%	Other	16.9%	Other	12.2%
Total	Total	100.0%	Total	100.0%	Total	100.0%



Top 3 Export Markets by Product, Based on Volume, YTD March 2015						
Rank by Share	Lumber (softwood)		Pulp		Logs	
	Country	Share %	Country	Share %	Country	Share %
First	U.S.	58.4%	China + Hong Kong	67.2%	China + Hong Kong	52.6%
Second	China + Hong Kong	25.7%	U.S.	10.7%	Japan	18.5%
Third	Japan	8.3%	Japan	5.5%	South Korea	15.8%
Other	Other	7.5%	Other	16.7%	Other	13.0%
Total	Total	100.0%	Total	100.0%	Total	100.0%

