
B.C. Forest Product Exports – January 2015

➤ Highlight of Exports in January 2015, compared to January 2014:

- B.C. forest product exports totalled \$0.97 billion, up 1.4% from \$0.95 billion.
- Share of export value by market: U.S. (48.0%, up from 43.4%), China + Hong Kong (29.7%, down from 31.8%), Japan (10.0%, down from 10.9%) and other destinations (12.3%, down from 13.9%).
- Share of export value by product: Softwood Lumber (44.2%, up from 43.4%), Pulp (28.0%, up from 26.9%), Other Wood Products* (12.6%, up from 11.9%), Other Paper Products** (9.2%, down from 10.1%) and Logs (6.0%, down from 7.8%).

➤ Highlight of Exports YTD 2015 (January), compared to YTD 2014 (January):

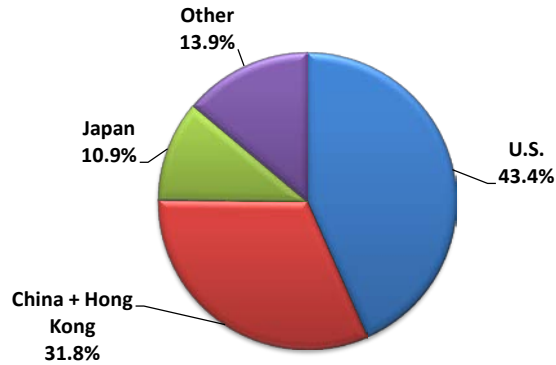
- Same as above.

**Includes wood products such as Veneer, OSB, Plywood, Siding, Poles, Chips, Ties, Mouldings, Panels, Furniture, Seats, Pellets, Shake and Shingles, etc.*

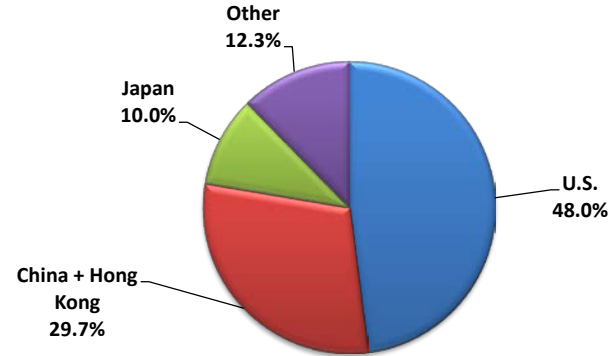
***Includes paper products such as Paper, Cards, Cartons, Rolls, Trays, Containers and Sacks & Bags, etc.*

B.C. Forest Product Exports - January 2015

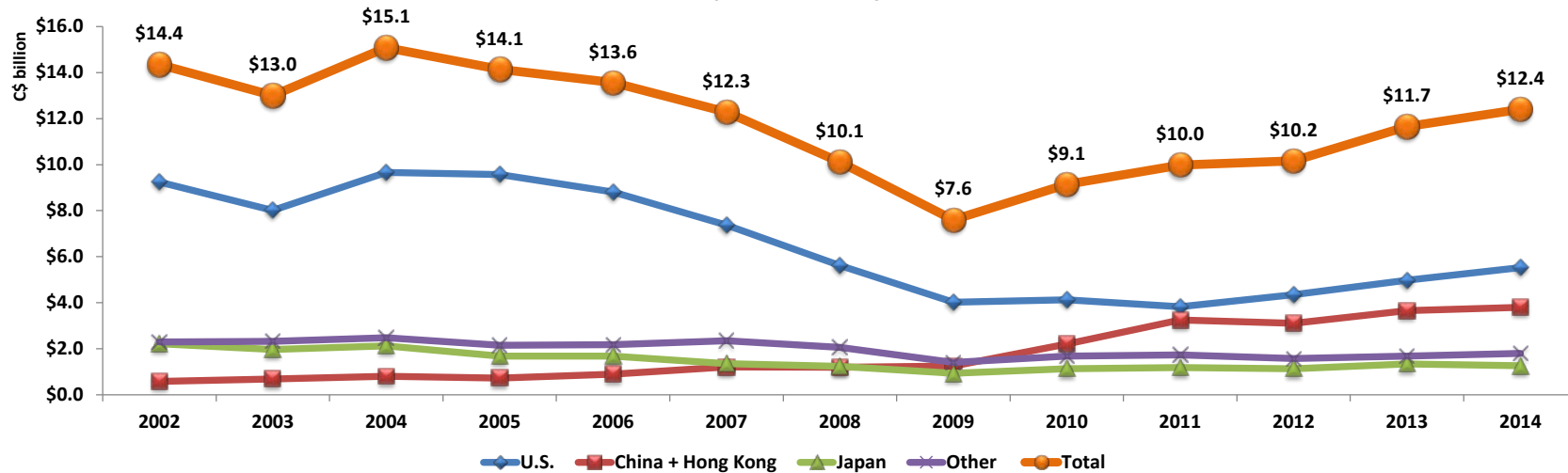
**B.C. Forest Product Export Value
(C\$0.95 billion)
Share by Market, YTD January 2014**



**B.C. Forest Product Export Value
(C\$0.97 billion)
Share by Market, YTD January 2015**



B.C. Forest Product Export Value by Market, 2002 - 2014

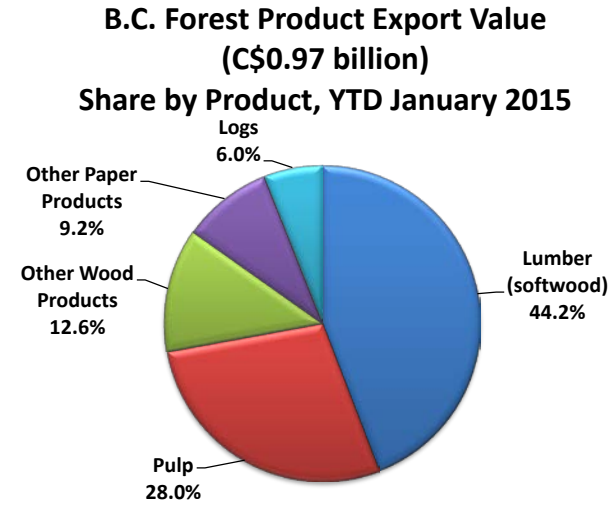
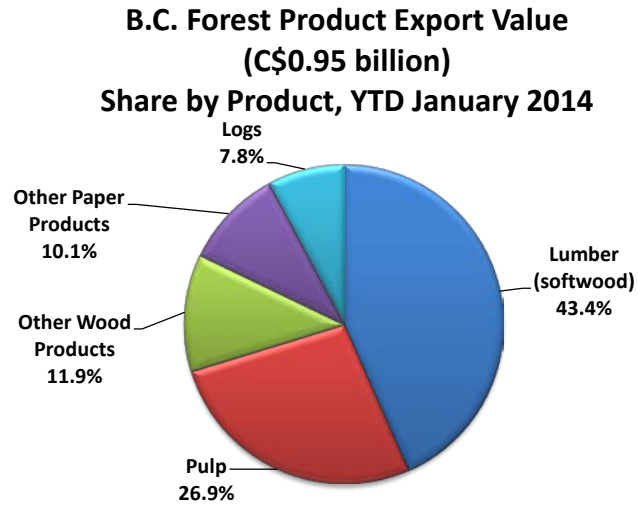


*YTD = Year to date

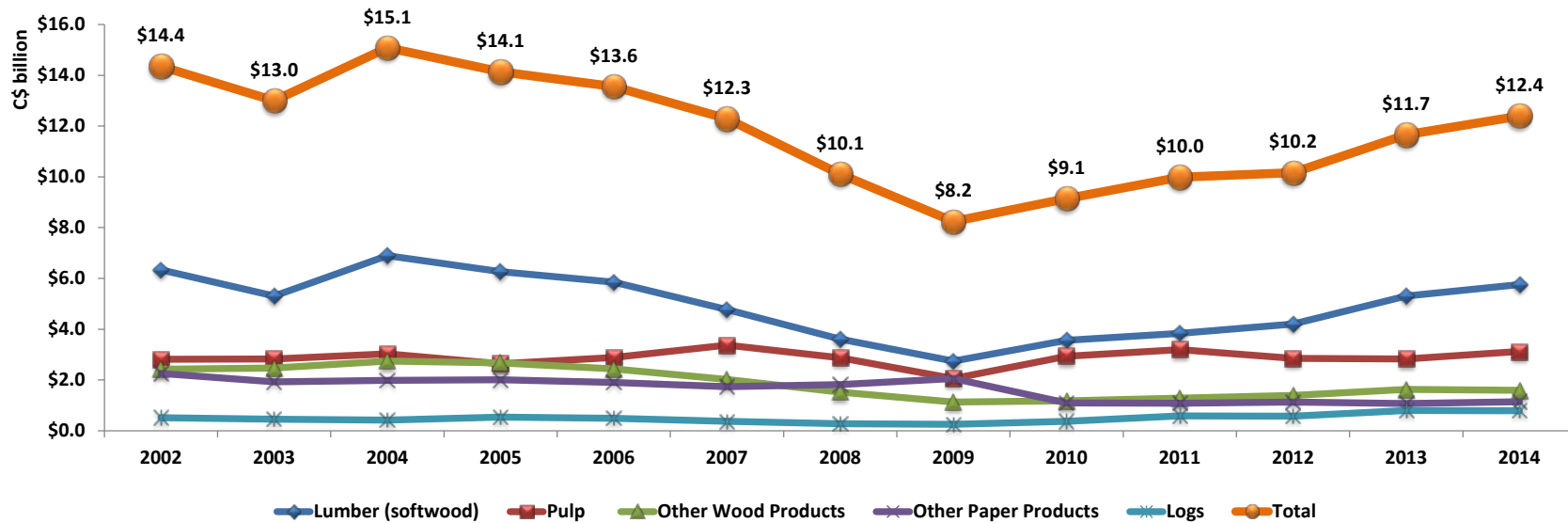
B.C. Forest Product Export Value (C\$ billion) and Share (%) by Market Current Month (January) and YTD, 2014 and 2015										
Destinations	Current Month 2014		Current Month 2015		Change %	YTD 2014		YTD 2015		Change %
	\$	Share %	\$	Share %		\$	Share %	\$	Share %	
U.S.	0.41	43.4%	0.46	48.0%	12.2%	0.41	43.4%	0.46	48.0%	12.2%
China + Hong Kong	0.30	31.8%	0.29	29.7%	-5.4%	0.30	31.8%	0.29	29.7%	-5.4%
Japan	0.10	10.9%	0.10	10.0%	-6.9%	0.10	10.9%	0.10	10.0%	-6.9%
Other	0.13	13.9%	0.12	12.3%	-10.1%	0.13	13.9%	0.12	12.3%	-10.1%
Total	0.95	100.0%	0.97	100.0%	1.4%	0.95	100.0%	0.97	100.0%	1.4%

B.C. Forest Product Export Value (C\$ billion) by Market, 2002 to 2014													
Destinations	2002	2003	2004	2005	2006	2007	2008	2009	2010	2011	2012	2013	2014
U.S.	9.25	8.01	9.66	9.57	8.82	7.37	5.61	4.02	4.13	3.83	4.34	4.97	5.53
China + Hong Kong	0.59	0.69	0.81	0.73	0.89	1.21	1.20	1.25	2.20	3.25	3.11	3.66	3.80
Japan	2.22	1.97	2.13	1.68	1.68	1.35	1.24	0.93	1.14	1.18	1.13	1.34	1.26
Other	2.30	2.33	2.48	2.15	2.17	2.35	2.06	1.40	1.68	1.73	1.57	1.68	1.80
Total	14.35	13.00	15.08	14.13	13.56	12.28	10.11	7.60	9.14	9.98	10.16	11.65	12.40

B.C. Forest Product Export Value Share (%) by Market, 2002 to 2014													
Destinations	2002	2003	2004	2005	2006	2007	2008	2009	2010	2011	2012	2013	2014
U.S.	64.4%	61.7%	64.1%	67.7%	65.0%	60.0%	55.5%	52.8%	45.1%	38.3%	42.8%	42.7%	44.6%
China + Hong Kong	4.1%	5.3%	5.3%	5.2%	6.6%	9.9%	11.8%	16.5%	24.1%	32.6%	30.6%	31.4%	30.7%
Japan	15.5%	15.1%	14.1%	11.9%	12.4%	11.0%	12.3%	12.3%	12.4%	11.8%	11.2%	11.5%	10.1%
Other	16.0%	17.9%	16.5%	15.2%	16.0%	19.1%	20.4%	18.4%	18.3%	17.3%	15.5%	14.4%	14.5%
Total	100.0%	100.0%	100.0%	100.0%	100.0%	100.0%	100.0%	100.0%	100.0%	100.0%	100.0%	100.0%	100.0%



B.C. Forest Product Export Value by Product, 2002 - 2014



Data Source: B.C. Stats tabulation from Statistics Canada data

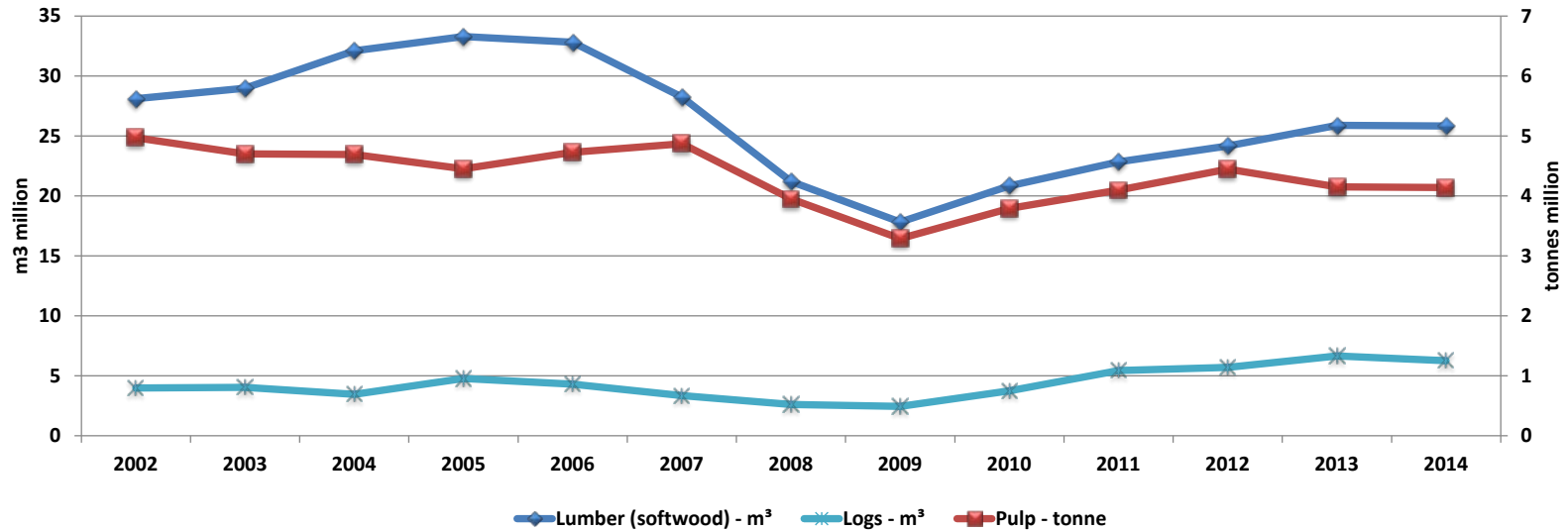
Prepared by Alex Barnes of Competitiveness and Innovation Branch, Ministry of Forests, Lands, and Natural Resource Operations

B.C. Forest Product Export Value (C\$ billion) and Share (%) by Product Current Month (January) and YTD, 2014 and 2015										
Products Category	Current Month 2014		Current Month 2015		Change %	YTD 2014		YTD 2015		Change %
	\$	Share %	\$	Share %		\$	Share %	\$	Share %	
Lumber (softwood)	0.41	43.4%	0.43	44.2%	3.2%	0.41	43.4%	0.43	44.2%	3.2%
Pulp	0.26	26.9%	0.27	28.0%	5.6%	0.26	26.9%	0.27	28.0%	5.6%
Other Wood Products	0.11	11.9%	0.12	12.6%	8.1%	0.11	11.9%	0.12	12.6%	8.1%
Other Paper Products	0.10	10.1%	0.09	9.2%	-7.5%	0.10	10.1%	0.09	9.2%	-7.5%
Logs	0.07	7.8%	0.06	6.0%	-21.8%	0.07	7.8%	0.06	6.0%	-21.8%
Total	0.95	100%	0.97	100.0%	1.4%	0.95	100.0%	0.97	100.0%	1.4%

B.C. Forest Product Export Value (C\$ billion) by Product, 2002 to 2014													
Products Category	2002	2003	2004	2005	2006	2007	2008	2009	2010	2011	2012	2013	2014
Lumber (softwood)	6.34	5.31	6.89	6.27	5.85	4.77	3.61	2.75	3.56	3.83	4.20	5.31	5.75
Pulp	2.81	2.83	3.03	2.64	2.89	3.38	2.88	2.06	2.94	3.20	2.85	2.83	3.12
Other Wood Products	2.42	2.47	2.74	2.68	2.44	2.02	1.52	1.13	1.18	1.28	1.39	1.63	1.59
Other Paper Products	2.26	1.93	1.99	2.01	1.90	1.74	1.82	2.06	1.10	1.08	1.13	1.08	1.14
Logs	0.52	0.46	0.43	0.53	0.49	0.37	0.28	0.25	0.37	0.59	0.58	0.80	0.78
Total	14.35	13.00	15.08	14.13	13.56	12.28	10.11	8.24	9.14	9.98	10.16	11.65	12.40

B.C. Forest Product Export Value Share (%) by Product, 2002 to 2014													
Products Category	2002	2003	2004	2005	2006	2007	2008	2009	2010	2011	2012	2013	2014
Lumber (softwood)	44.2%	40.9%	45.7%	44.4%	43.1%	38.9%	35.7%	33.4%	38.9%	38.4%	41.4%	45.6%	46.4%
Pulp	19.6%	21.7%	20.1%	18.7%	21.3%	27.5%	28.5%	25.0%	32.1%	32.0%	28.1%	24.3%	25.2%
Other Wood Products	16.9%	19.0%	18.2%	19.0%	18.0%	16.5%	15.1%	13.7%	12.9%	12.9%	13.7%	14.0%	12.9%
Other Paper Products	15.7%	14.9%	13.2%	14.2%	14.0%	14.2%	18.0%	25.0%	12.0%	10.8%	11.1%	9.2%	9.2%
Logs	3.6%	3.5%	2.8%	3.8%	3.6%	3.0%	2.7%	3.0%	4.1%	5.9%	5.7%	6.9%	6.3%

B.C. Forest Product Export Volume by Product, 2002 - 2014

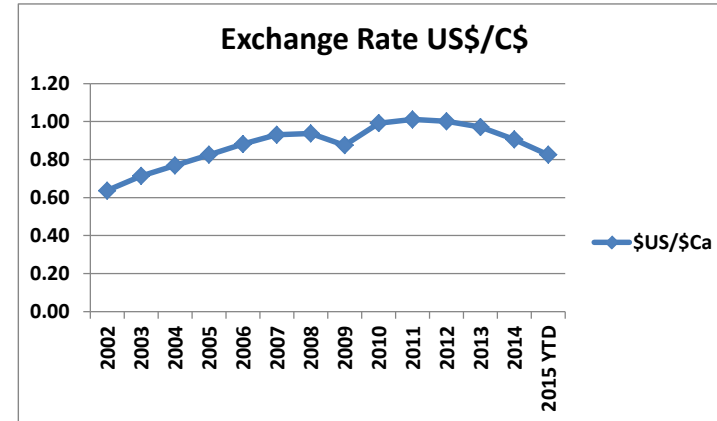


B.C. Forest Products Export Volume (million) by Product Current Month (January) and YTD, 2014 and 2015						
Products Category	Current Month 2014	Current Month 2015	Change %	YTD 2014	YTD 2015	Change %
Lumber (softwood) - m ³	1.94	1.79	-7.5%	1.94	1.79	-7.5%
Pulp - tonne	0.34	0.34	1.3%	0.34	0.34	1.3%
Logs - m ³	0.61	0.42	-31.7%	0.61	0.42	-31.7%

B.C. Forest Products Export Volume (million) by Product, 2002 to 2014													
Products Category	2002	2003	2004	2005	2006	2007	2008	2009	2010	2011	2012	2013	2014
Lumber (softwood) - m ³	28.11	29.00	32.11	33.30	32.83	28.25	21.21	17.82	20.85	22.84	24.16	25.88	25.85
Pulp - tonne	4.97	4.70	4.69	4.45	4.73	4.87	3.95	3.29	3.79	4.10	4.45	4.15	4.14
Logs - m ³	3.97	4.05	3.46	4.77	4.31	3.34	2.62	2.46	3.74	5.45	5.71	6.67	6.27

B.C. Forest Product Export Value (C\$ billion) and Share (%) by Product and Major Market, YTD January 2015										
Products Category	U.S.		China + Hong Kong		Japan		Other		Total	
	\$	Share %	\$	Share %	\$	Share %	\$	Share %	\$	Share %
Lumber (softwood)	0.25	54.6%	0.08	27.9%	0.06	57.5%	0.04	31.7%	0.43	44.2%
Pulp	0.03	7.5%	0.17	60.9%	0.02	17.0%	0.04	37.6%	0.27	28.0%
Other Wood Products	0.10	21.8%	0.00	0.1%	0.01	7.3%	0.01	11.3%	0.12	12.6%
Other Paper Products	0.07	14.2%	0.01	2.7%	0.00	0.9%	0.01	12.1%	0.09	9.2%
Logs	0.01	1.8%	0.02	8.5%	0.02	17.2%	0.01	7.2%	0.06	6.0%
Total	0.46	100.0%	0.29	100.0%	0.10	100.0%	0.12	100.0%	0.97	100.0%

Top 3 Export Markets by Product, Based on Value, YTD January 2015						
Rank by Share	Lumber (softwood)		Pulp		Logs	
	Country	Share %	Country	Share %	Country	Share %
First	U.S.	59.4%	China + Hong Kong	64.5%	China + Hong Kong	41.8%
Second	China + Hong Kong	18.7%	U.S.	12.8%	Japan	28.7%
Third	Japan	13.0%	Japan	6.1%	U.S.	14.7%
Other	Other	8.9%	Other	16.5%	Other	14.8%
Total	Total	100.0%	Total	100.0%	Total	100.0%



Top 3 Export Markets by Product, Based on Volume, YTD January 2015						
Rank by Share	Lumber (softwood)		Pulp		Logs	
	Country	Share %	Country	Share %	Country	Share %
First	U.S.	62.1%	China + Hong Kong	67.6%	China + Hong Kong	36.1%
Second	China + Hong Kong	22.4%	U.S.	10.2%	Japan	28.9%
Third	Japan	8.9%	Japan	6.3%	U.S.	18.7%
Other	Other	6.5%	Other	15.9%	Other	16.3%
Total	Total	100.0%	Total	100.0%	Total	100.0%

