

B.C. Forest Product Exports – May 2017

Highlights for Year-to-Date (YTD)

B.C. export values are up **5%** for 2017 YTD May compared to the same period in 2016 (**\$5.97** billion vs. **\$5.71**). Lumber value is up **5%** (volumes are down **-11%**). Pulp export value is up (**7%**). The value of Other Wood Products¹ has declined (**-3%**). The value of Other Paper Products² is up (**5%**).

In terms of value by destination country China (**11%**) and Japan (**10%**) are up. Value to Other countries (**6%**) is also up. The value to the United States (**0%**) is relatively unchanged.

Value and Quantity by Product (YTD)

	Value		Quantity	
	Value (\$m)	Change from 2016	Quantity (thousands)	Change from 2016
Lumber	\$ 2,921	5%	10,919 m3	-11%
Pulp	\$ 1,357	7%	1784 t	3%
Other Wood	\$ 949	-3%	-	-
Other Paper	\$ 415	5%	-	-
Logs	\$ 325	14%	2,491 m3	7%
Total	\$ 5,967	5%	-	-

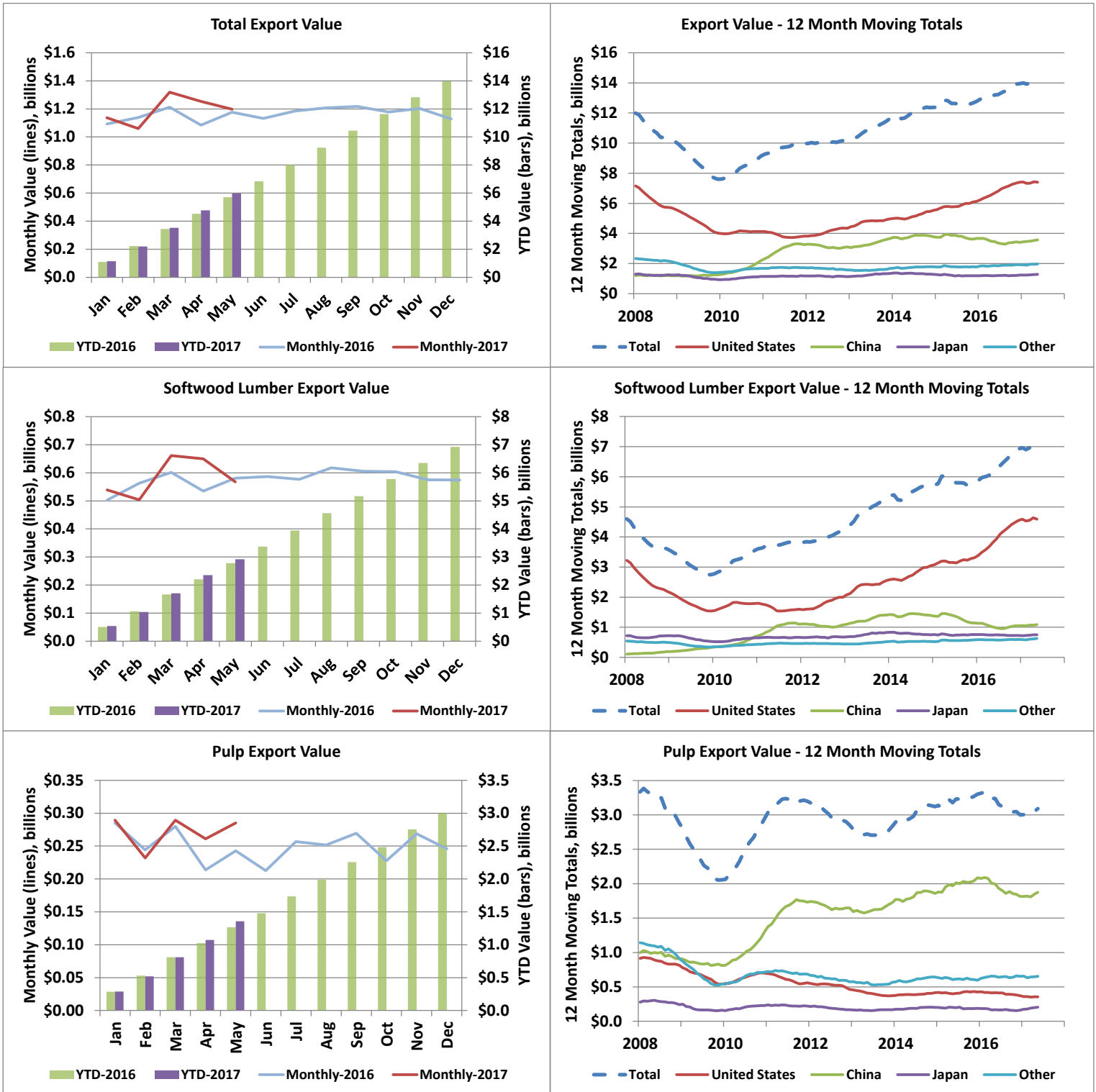
Value by Country (YTD)

	Value (\$m)	Change from 2016	Share of Value in	
			2017	Share in 2016
USA	\$ 3,014	0%	51%	53%
China	\$ 1,592	11%	27%	25%
Japan	\$ 539	10%	9%	9%
Other Countries	\$ 822	6%	14%	14%
Total	\$ 5,967	5%	100%	100%

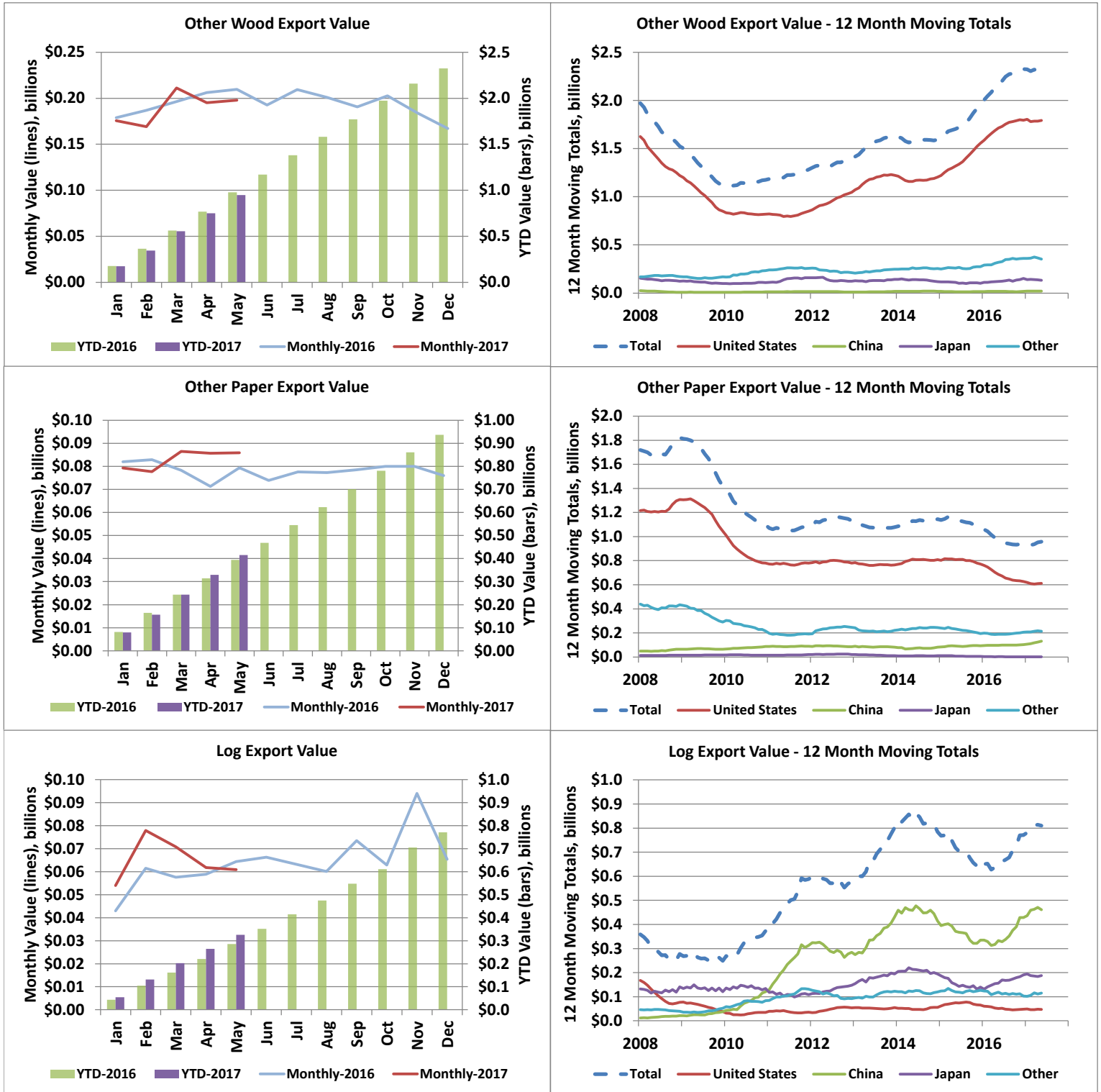
1. Includes wood products such as Veneer, OSB, Plywood, Siding, Poles, Chips, Ties, Mouldings, Panels, Furniture, Seats, Pellets, Shake and Shingles, etc.

2. Includes paper products such as Paper, Cards, Cartons, Rolls, Trays, Containers and Sacks & Bags, etc.

Export Values by Product and Destination



Export Values by Product and Destination



Value (C\$ Millions) - Current Month																
2017								Change in Total YoY	2016							
	Lumber	Pulp	Other Wood	Other Paper	Logs	Country Total	Country Share			Lumber	Pulp	Other Wood	Other Paper	Logs	Country Total	Country Share
U.S.A.	334	30	166	52	3	585	49%	-6%	U.S.A.	378	31	158	50	5	622	53%
China	105	182	4	15	31	337	28%	13%	China	91	152	5	11	42	300	25%
Japan	65	24	7	0	16	113	9%	9%	Japan	60	18	14	0	12	104	9%
Other	64	49	21	18	10	162	14%	7%	Other	52	43	33	18	5	151	13%
Product Total	568	285	198	86	61	1,198	100%	2%	Product Total	581	243	210	79	64	1,177	100%
Product Share	47%	24%	17%	7%	5%	100%			Product Share	49%	21%	18%	7%	5%	100%	
Change in Total YoY	-2%	17%	-6%	8%	-5%	2%										

*China includes exports to Hong Kong.

Value (C\$ Millions) - Year to Date																
2017								Change in Total YoY	2016							
	Lumber	Pulp	Other Wood	Other Paper	Logs	Country Total	Country Share			Lumber	Pulp	Other Wood	Other Paper	Logs	Country Total	Country Share
U.S.A.	1,853	138	752	251	21	3,014	51%	0%	U.S.A.	1,814	154	754	266	22	3,010	53%
China	479	836	17	72	188	1,592	27%	11%	China	439	771	17	45	158	1,430	25%
Japan	309	111	43	1	76	539	9%	10%	Japan	281	66	62	1	79	489	9%
Other	280	273	137	91	41	822	14%	6%	Other	249	274	144	82	27	776	14%
Product Total	2,921	1,357	949	415	325	5,967	100%	5%	Product Total	2,782	1,266	978	394	285	5,705	100%
Product Share	49%	23%	16%	7%	5%	100%			Product Share	49%	22%	17%	7%	5%	100%	
Change in Total YoY	5%	7%	-3%	5%	14%	5%										

Quantity (Thousands) - Current Month										
2017			Change YoY			2016				
	Lumber (m ³)	Pulp (tonnes)	Logs (m ³)	Lumber	Pulp	Logs		Lumber (m ³)	Pulp (tonnes)	Logs (m ³)
U.S.A.	1,360	34	27	-20%	-11%	-39%	U.S.A.	1,703	38	44
China	509	246	237	-9%	11%	-27%	China	561	221	325
Japan	183	28	113	0%	17%	17%	Japan	183	24	96
Other	171	59	77	23%	-7%	20%	Other	139	64	64
Total	2,223	367	453	-14%	6%	-14%	Total	2,585	347	529
Change in Total YoY	-14%	6%	-14%							

Quantity (Thousands) - Year to Date										
2017			Change YoY			2016				
	Lumber (m ³)	Pulp (tonnes)	Logs (m ³)	Lumber	Pulp	Logs		Lumber (m ³)	Pulp (tonnes)	Logs (m ³)
U.S.A.	6,959	162	167	-13%	-10%	-8%	U.S.A.	7,988	180	182
China	2,363	1,124	1,458	-13%	3%	13%	China	2,729	1,087	1,288
Japan	871	138	535	4%	57%	-11%	Japan	834	88	598
Other	725	360	331	4%	-3%	31%	Other	698	373	253
Total	10,919	1,784	2,491	-11%	3%	7%	Total	12,249	1,727	2,321
Change in Total YoY	-11%	3%	7%							

Share of Value - 2017 YTD						
Country	Lumber	Pulp	Other Wood	Other Paper	Logs	Country Share
U.S.A.	63%	10%	79%	60%	6%	51%
China	16%	62%	2%	17%	58%	27%
Japan	11%	8%	5%	0%	23%	9%
Other	10%	20%	14%	22%	12%	14%
Total	100%	100%	100%	100%	100%	100%
Product Share	49%	23%	16%	7%	5%	100%

Share of Quantity - 2017 YTD					
Country	Lumber	Pulp	Logs	Panels	Pellets
U.S.A.	64%	9%	7%	85%	1%
China	22%	63%	59%	2%	0%
Japan	8%	8%	21%	8%	6%
South Korea	1%	7%	13%	0%	6%
Indonesia	0%	5%	0%	0%	0%
U.K	0%	0%	0%	1%	79%
Other	5%	7%	0%	4%	8%
Total	100%	100%	100%	100%	100%

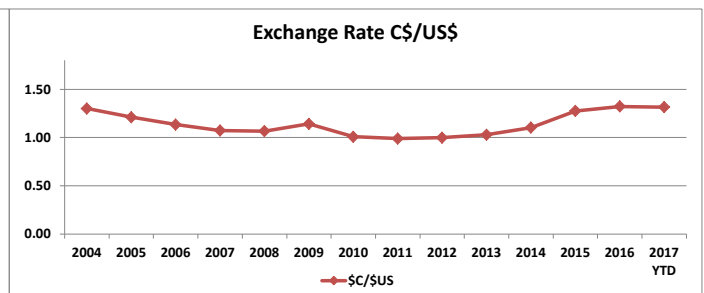
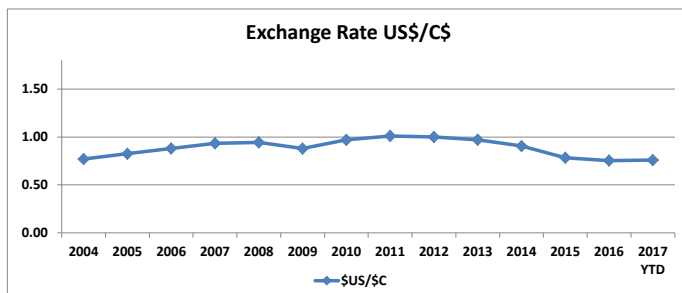
*Panels include OSB, plywood, particleboard, and fibreboard

B.C. Forest Product Export Value (C\$ Million) by Market, 2004 to 2017 YTD														
Country	2004	2005	2006	2007	2008	2009	2010	2011	2012	2013	2014	2015	2016	2017 YTD
U.S.A.	9,662	9,572	8,816	7,373	5,613	4,017	4,125	3,825	4,344	4,973	5,532	6,132	7,393	3,014
China	807	731	890	1,212	1,196	1,253	2,205	3,252	3,107	3,662	3,804	3,741	3,412	1,564
Japan	2,130	1,677	1,680	1,350	1,241	933	1,136	1,178	1,135	1,343	1,257	1,188	1,230	539
Other	2,482	2,154	2,175	2,347	2,057	1,400	1,677	1,729	1,574	1,676	1,804	1,815	1,919	850
Total	15,081	14,134	13,560	12,282	10,107	7,602	9,143	9,985	10,159	11,654	12,397	12,876	13,955	5,967

B.C. Forest Product Export Value (C\$ Million) by Product, 2004 to 2017 YTD														
Products Category	2004	2005	2006	2007	2008	2009	2010	2011	2012	2013	2014	2015	2016	2017 YTD
Lumber (softwood)	6,895	6,272	5,849	4,773	3,606	2,749	3,558	3,833	4,204	5,311	5,754	5,897	6,924	2,921
Pulp	3,033	2,643	2,887	3,379	2,878	2,056	2,939	3,200	2,852	2,831	3,121	3,301	2,998	1,357
Other Wood Products	2,742	2,679	2,440	2,022	1,524	1,129	1,175	1,284	1,394	1,633	1,594	1,948	2,325	949
Other Paper Products	1,986	2,006	1,897	1,739	1,821	1,419	1,098	1,079	1,132	1,077	1,144	1,066	937	415
Logs	425	534	487	369	278	249	373	588	577	802	784	666	771	325
Total	14,353	12,997	15,081	14,134	13,560	12,282	10,107	8,239	9,143	9,985	10,159	11,654	12,396	5,967

B.C. Forest Product Export Quantity (millions) by Product, 2004 to 2017 YTD														
Products Category	2004	2005	2006	2007	2008	2009	2010	2011	2012	2013	2014	2015	2016	2017 YTD
Lumber (softwood) - m ³	32.11	33.30	32.83	28.25	21.21	17.82	20.85	22.84	24.16	25.88	25.85	26.21	29.24	10.92
Pulp - tonnes	4.69	4.45	4.73	4.87	3.95	3.29	3.79	4.10	4.45	4.15	4.14	4.27	4.07	1.78
Logs - m ³	3.46	4.77	4.31	3.34	2.62	2.46	3.74	5.45	5.71	6.67	6.27	5.57	6.28	2.49
Panels - m ³	2.59	2.53	2.90	2.68	1.86	1.25	1.10	1.63	1.57	1.67	1.52	1.78	2.14	0.86
Pellets - tonnes	0.39	0.41	0.51	0.63	0.68	0.76	1.06	1.22	1.17	1.28	1.29	1.26	1.93	0.69

*Panels include OSB, plywood, particleboard, and fibreboard. Veneer is excluded.



Source: OANDA Additional exchange rates will be included in the near future

Additional annual data and charts can be found in the annual Economic State of B.C.'s Forest Sector

Export Quantities by Product and Destination

