

B.C. Forest Product Exports – February 2017

Highlights for Year-to-Date (YTD)

B.C. export values are down **-1%** for 2017 YTD February compared to the same period in 2016 (**\$2.20** billion vs. **\$2.23**). Lumber value is down **-2%** (volumes are down **-10%**). Pulp export value is down (**-2%**). The value of Other Wood Products¹ has declined (**-6%**), and the value of Other Paper Products² has declined (**-5%**).

In terms of value by destination country China (**+9%**) and Japan (**+3%**) are up. The value to the United States (**-5%**) and to Other countries (**-7%**) are down.

Value and Quantity by Product (YTD)

	Value		Quantity	
	Value (\$m)	Change from 2016	Quantity (thousands)	Change from 2016
Lumber	\$ 1,043	-2%	3,993 m3	-10%
Pulp	\$ 521	-2%	711 t	2%
Other Wood	\$ 345	-6%	-	-
Other Paper	\$ 157	-5%	-	-
Logs	\$ 132	26%	1044 m3	28%
Total	\$ 2,198	-1%	-	-

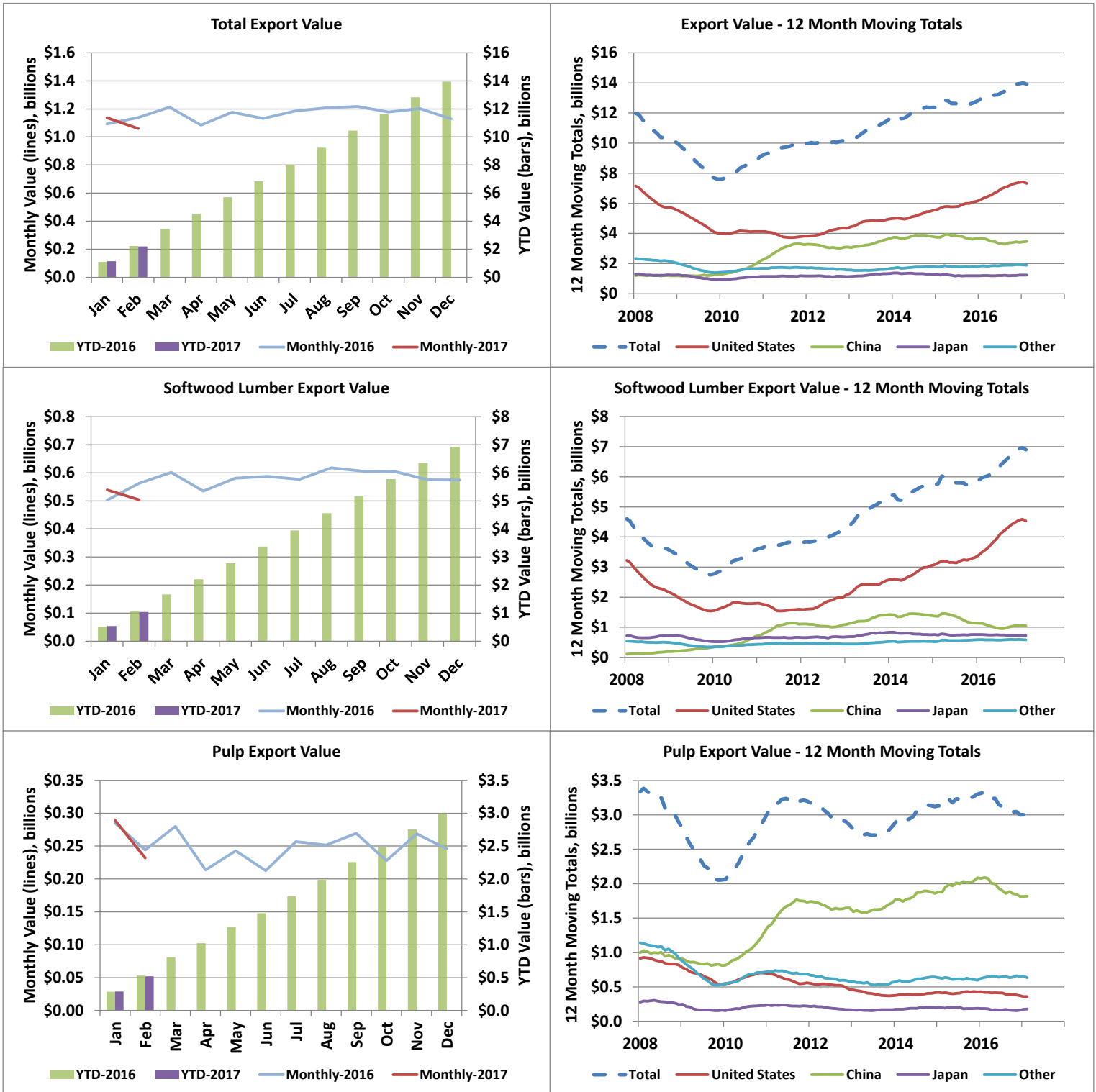
Value by Country (YTD)

	Value (\$m)	Change from 2016	Share of Value in	
			2017	Share in 2016
USA	\$ 1,098	-5%	50%	52%
China	\$ 598	9%	27%	25%
Japan	\$ 198	3%	9%	9%
Other Countries	\$ 304	-7%	14%	15%
Total	\$ 2,198	-1%	100%	100%

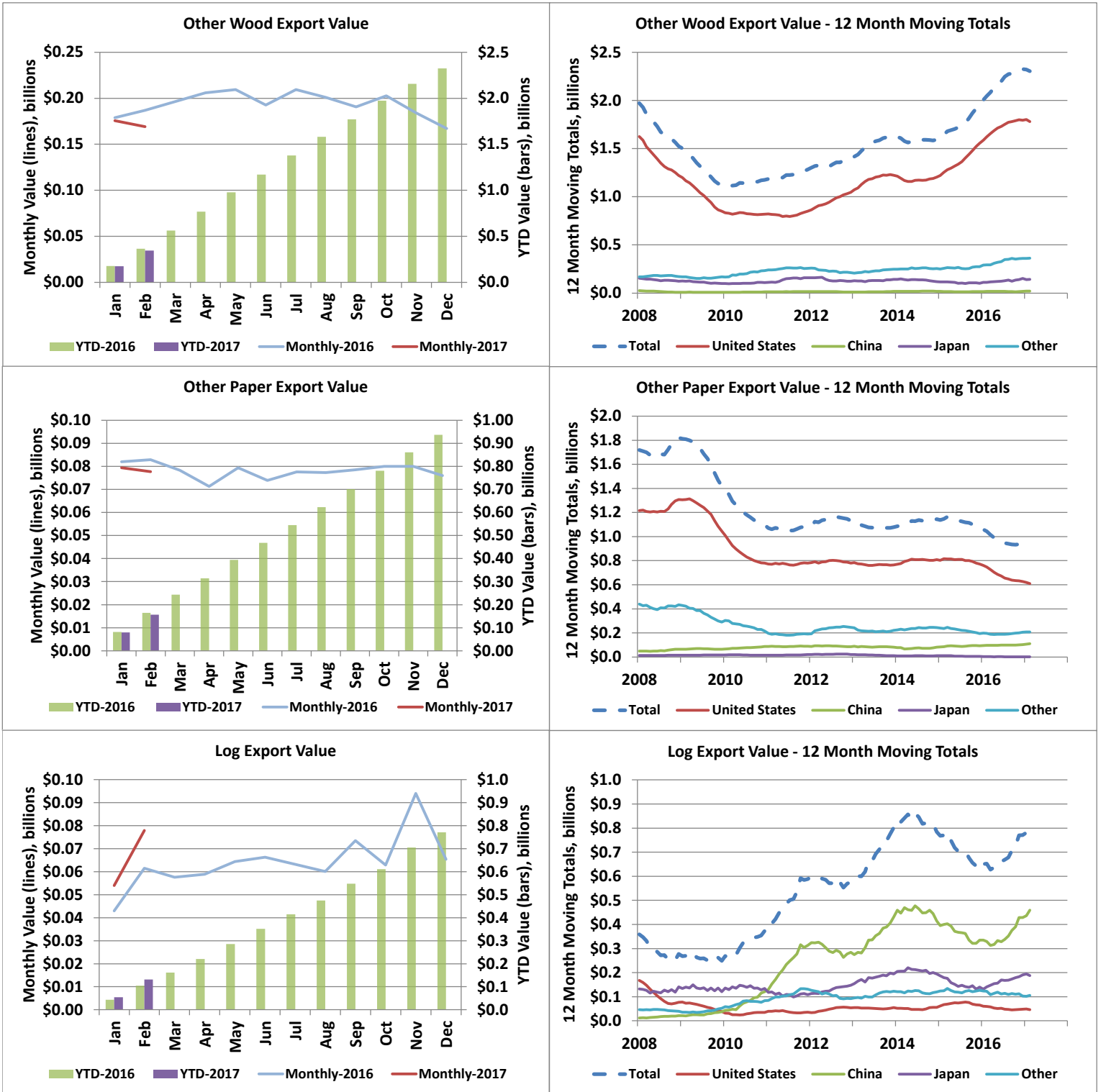
1. Includes wood products such as Veneer, OSB, Plywood, Siding, Poles, Chips, Ties, Mouldings, Panels, Furniture, Seats, Pellets, Shake and Shingles, etc.

2. Includes paper products such as Paper, Cards, Cartons, Rolls, Trays, Containers and Sacks & Bags, etc.

Export Values by Product and Destination



Export Values by Product and Destination



Value (C\$ Millions) - Current Month																
2017								Change in Total YoY	2016							
	Lumber	Pulp	Other Wood	Other Paper	Logs	Country Total	Country Share			Lumber	Pulp	Other Wood	Other Paper	Logs	Country Total	Country Share
U.S.A.	307	24	127	46	5	508	48%	-16%	U.S.A.	367	24	148	56	7	602	53%
China	90	159	3	13	46	311	29%	9%	China	94	154	5	10	24	286	25%
Japan	59	15	11	0	16	102	10%	8%	Japan	51	11	10	0	23	95	8%
Other	48	33	28	18	11	139	13%	-11%	Other	52	56	24	17	7	155	14%
Product Total	504	232	169	78	78	1,061	100%	-7%	Product Total	563	244	187	83	61	1,139	100%
Product Share	48%	22%	16%	7%	7%	100%			Product Share	49%	21%	16%	7%	5%	100%	
Change in Total YoY	-11%	-5%	-9%	-6%	27%	-7%										

*China includes exports to Hong Kong.

Value (C\$ Millions) - Year to Date																
2017								Change in Total YoY	2016							
	Lumber	Pulp	Other Wood	Other Paper	Logs	Country Total	Country Share			Lumber	Pulp	Other Wood	Other Paper	Logs	Country Total	Country Share
U.S.A.	679	50	268	92	9	1,098	50%	-5%	U.S.A.	697	61	281	110	11	1,161	52%
China	164	324	5	26	78	598	27%	9%	China	160	317	6	18	50	550	25%
Japan	112	42	16	0	28	198	9%	3%	Japan	108	25	26	1	32	192	9%
Other	89	105	55	39	16	304	14%	-7%	Other	100	126	52	37	12	328	15%
Product Total	1,043	521	345	157	132	2,198	100%	-1%	Product Total	1,066	529	366	165	104	2,230	100%
Product Share	47%	24%	16%	7%	6%	100%			Product Share	48%	24%	16%	7%	5%	100%	
Change in Total YoY	-2%	-2%	-6%	-5%	26%	-1%										

Quantity (Thousands) - Current Month										
2017			Change YoY			2016				
	Lumber (m ³)	Pulp (tonnes)	Logs (m ³)	Lumber	Pulp	Logs		Lumber (m ³)	Pulp (tonnes)	Logs (m ³)
U.S.A.	1,219	30	34	-20%	8%	-32%	U.S.A.	1,523	28	51
China	473	220	361	-17%	2%	88%	China	569	217	192
Japan	165	19	123	17%	35%	-26%	Japan	141	14	165
Other	125	44	83	-12%	-38%	38%	Other	142	72	60
Total	1,983	313	600	-16%	-5%	28%	Total	2,374	330	468
Change in Total YoY	-16%	-5%	28%							

Quantity (Thousands) - Year to Date										
2017			Change YoY			2016				
	Lumber (m ³)	Pulp (tonnes)	Logs (m ³)	Lumber	Pulp	Logs		Lumber (m ³)	Pulp (tonnes)	Logs (m ³)
U.S.A.	2,594	61	70	-9%	-8%	-12%	U.S.A.	2,854	66	79
China	846	450	645	-15%	3%	57%	China	997	437	410
Japan	319	55	207	4%	76%	-9%	Japan	306	31	228
Other	233	145	122	-16%	-9%	23%	Other	279	159	100
Total	3,993	711	1,044	-10%	2%	28%	Total	4,436	694	817
Change in Total YoY	-10%	2%	28%							

B.C. Forest Product Exports - February 2017

Share of Value - 2017 YTD						
Country	Lumber	Pulp	Other Wood	Other Paper	Logs	Country Share
U.S.A.	65%	10%	78%	59%	7%	50%
China	16%	62%	2%	17%	59%	27%
Japan	11%	8%	5%	0%	21%	9%
Other	9%	20%	16%	25%	12%	14%
Total	100%	100%	100%	100%	100%	100%
Product Share	47%	24%	16%	7%	6%	100%

Share of Quantity - 2017 YTD					
Country	Lumber	Pulp	Logs	Panels	Pellets
U.S.A.	65%	9%	7%	84%	2%
China	21%	63%	62%	3%	0%
Japan	8%	8%	20%	7%	3%
South Korea	1%	7%	12%	1%	1%
Indonesia	0%	6%	0%	0%	0%
U.K	0%	0%	0%	1%	93%
Other	5%	8%	0%	5%	0%
Total	100%	100%	100%	100%	100%

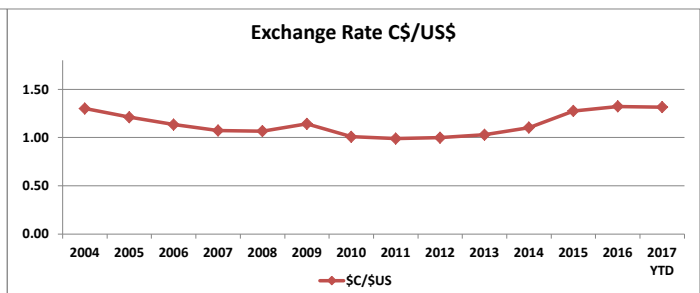
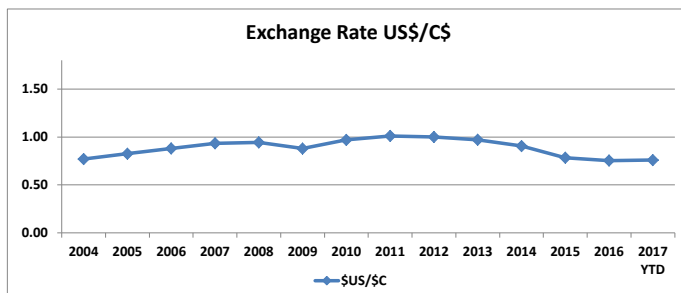
*Panels include OSB, plywood, particleboard, and fibreboard

B.C. Forest Product Export Value (C\$ Million) by Market, 2004 to 2017 YTD														
Country	2004	2005	2006	2007	2008	2009	2010	2011	2012	2013	2014	2015	2016	2017 YTD
U.S.A.	9,662	9,572	8,816	7,373	5,613	4,017	4,125	3,825	4,344	4,973	5,532	6,132	7,393	1,098
China	807	731	890	1,212	1,196	1,253	2,205	3,252	3,107	3,662	3,804	3,741	3,412	594
Japan	2,130	1,677	1,680	1,350	1,241	933	1,136	1,178	1,135	1,343	1,257	1,188	1,230	198
Other	2,482	2,154	2,175	2,347	2,057	1,400	1,677	1,729	1,574	1,676	1,804	1,815	1,919	308
Total	15,081	14,134	13,560	12,282	10,107	7,602	9,143	9,985	10,159	11,654	12,397	12,876	13,955	2,198

B.C. Forest Product Export Value (C\$ Million) by Product, 2004 to 2017 YTD														
Products Category	2004	2005	2006	2007	2008	2009	2010	2011	2012	2013	2014	2015	2016	2017 YTD
Lumber (softwood)	6,895	6,272	5,849	4,773	3,606	2,749	3,558	3,833	4,204	5,311	5,754	5,897	6,924	1,043
Pulp	3,033	2,643	2,887	3,379	2,878	2,056	2,939	3,200	2,852	2,831	3,121	3,301	2,998	521
Other Wood Products	2,742	2,679	2,440	2,022	1,524	1,129	1,175	1,284	1,394	1,633	1,594	1,948	2,325	345
Other Paper Products	1,986	2,006	1,897	1,739	1,821	1,419	1,098	1,079	1,132	1,077	1,144	1,066	937	157
Logs	425	534	487	369	278	249	373	588	577	802	784	666	771	132
Total	14,353	12,997	15,081	14,134	13,560	12,282	10,107	8,239	9,143	9,985	10,159	11,654	12,396	2,198

B.C. Forest Product Export Quantity (millions) by Product, 2004 to 2017 YTD														
Products Category	2004	2005	2006	2007	2008	2009	2010	2011	2012	2013	2014	2015	2016	2017 YTD
Lumber (softwood) - m ³	32.11	33.30	32.83	28.25	21.21	17.82	20.85	22.84	24.16	25.88	25.85	26.21	29.24	3.99
Pulp - tonnes	4.69	4.45	4.73	4.87	3.95	3.29	3.79	4.10	4.45	4.15	4.14	4.27	4.07	0.71
Logs - m ³	3.46	4.77	4.31	3.34	2.62	2.46	3.74	5.45	5.71	6.67	6.27	5.57	6.28	1.04
Panels - m ³	2.59	2.53	2.90	2.68	1.86	1.25	1.10	1.63	1.57	1.67	1.52	1.78	2.14	0.32
Pellets - tonnes	0.39	0.41	0.51	0.63	0.68	0.76	1.06	1.22	1.17	1.28	1.29	1.26	1.93	0.27

*Panels include OSB, plywood, particleboard, and fibreboard. Veneer is excluded.



Source: OANDA Additional exchange rates will be included in the near future

[Additional annual data and charts can be found in the annual Economic State of B.C.'s Forest Sector](#)

Export Quantities by Product and Destination

