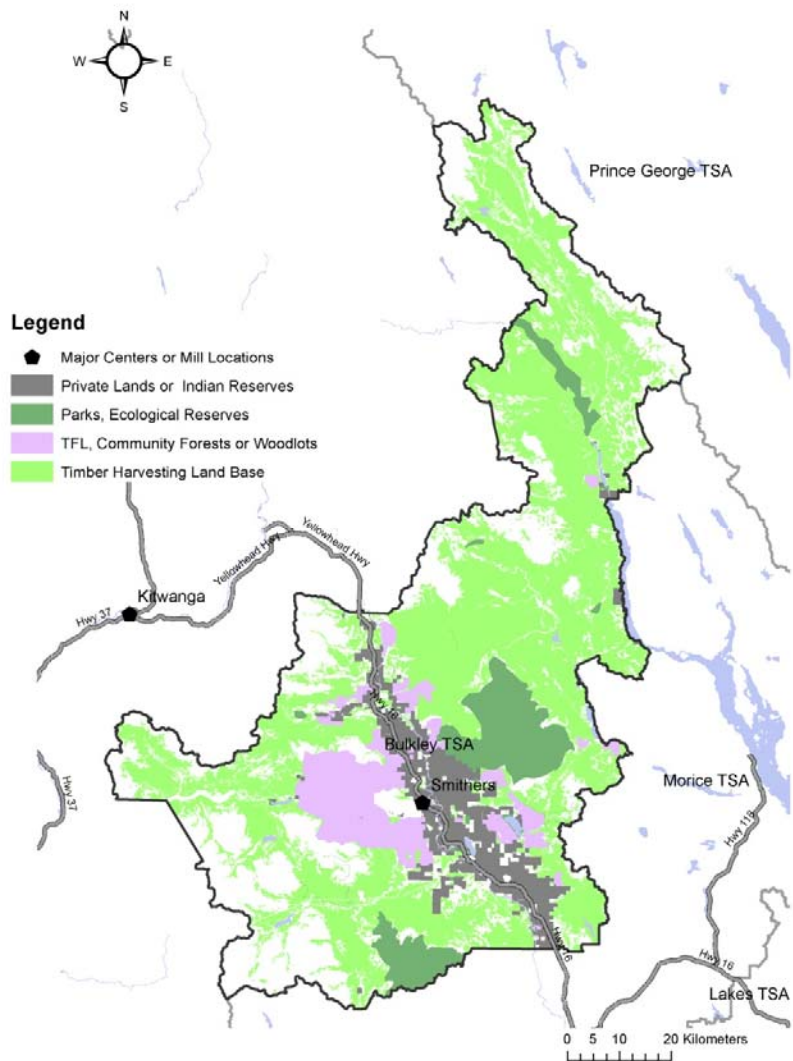


June 8, 2012

## Bulkley Timber Supply Area

### Background



The Bulkley Timber Supply Area covers 762,500 hectares:

- about 45% is considered to be available for timber harvesting

*Communities:* The Bulkley Timber Supply Area includes the communities of Smithers, Telkwa, Moricetown and Fort Babine. Residents frequently work outside of the area, such as the Morice and Lakes timber supply areas.

### **Status of Land Use Plans**

- Bulkley Land and Resource Management Plan (approved 1997)

### **Past Allowable Annual Cut**

- Set at 882,000 cubic metres in 2001, including partitions of 520,000 cubic metres for sawlog quality wood and 362,000 cubic metres for marginal sawlog/pulpwood quality wood
- Currently 852,000 cubic metres, after accounting for new area-based tenures established since 2001

### **Mid-Term Timber Supply Forecasts**

- Mid-term timber supply in the Bulkley Timber Supply Area is not expected to be as significantly impacted as in the Morice and Lakes timber supply areas because of the lower pine content, lower infestation levels and lower spread rates.
- The marginal sawlog/pulpwood portion of the allowable annual cut presents economic challenges for harvesting because of the low timber values as compared to costs.

### **Mountain Pine Beetle Forecasts**

- Pine stands in the Bulkley Timber Supply Area occupy about 85,000 hectares or 25% of the timber harvesting land base. About half are young, regenerating stands.
- The pine stands tend to be mixed with more non-pine tree species than in neighbouring timber supply areas and are not distributed evenly over the landscape. This reduces both the susceptibility of mature stands to the mountain pine beetle, and the rate at which it spreads.
  - Strong, westerly prevailing winds also slowed the spread. However, between 2003 and 2008, the epidemic did spread into the south and east central landscape units, resulting in significant pine mortality.
  - Overview flights in 2009 and 2010 over the entire timber supply area indicated that there are very few landscape units with extensive new pine mortality. A timber supply review for the Bulkley Timber Supply Area is currently in progress, and new timber supply projections are expected to be available later this year. According to the March 2011 data package, it is assumed mountain pine beetle infestation levels will revert to previous, endemic levels within the next two decades, with the exception of a few infestation pockets.

### **More information:**

#### **Mid-Term Timber Supply Project**

[http://www.for.gov.bc.ca/hfp/mountain\\_pine\\_beetle/#whatsnew](http://www.for.gov.bc.ca/hfp/mountain_pine_beetle/#whatsnew)

#### **Forest Analysis: Bulkley Timber Supply Area**

<http://www.for.gov.bc.ca/hts/tsa/tsa03/index.htm>

#### **Bulkley Land and Resource Management Plan**

<http://www.ilmb.gov.bc.ca/slrp/lrmp/smithers/bulkley/index.html>