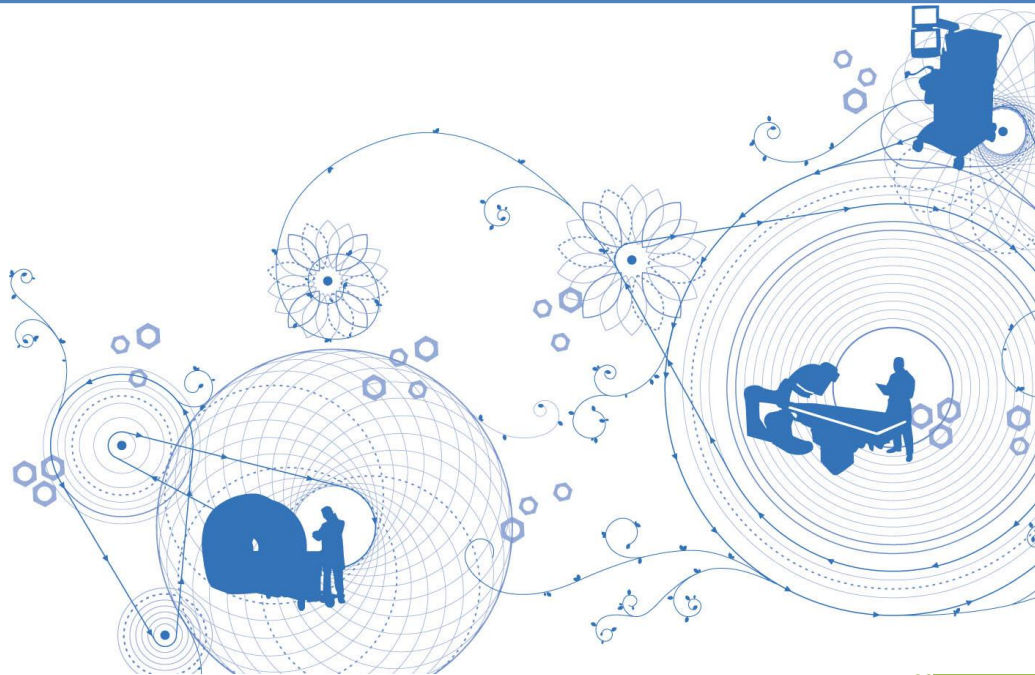




2012-2016

GE Healthcare Product Stewardship Plan



B.C. Recycling Regulation - Schedule 3,
Phase 5 Electronic and Electrical Products

Submitted: November 14, 2011

Revised & Re-Submitted: June 28, 2012

General Electric Canada (Healthcare)

Table of Contents

	Page
1. Background and Summary	2
2. Products Included in the Stewardship Plan	4
3. Product Recovery Targets	5
4. Stakeholder Consultation	5
5. Collection System	6
6. Environmental Handling Fees	7
7. Consumer Awareness	8
8. Program Performance Measurements	8
9. Dispute Resolution	9
10. Product Life Cycle Management	9
11. Pollution Prevention Hierarchy	12
12. References	14
Appendix A Stakeholder Consultation Summary	15

GE Healthcare Product Stewardship Plan

1. **Background and Summary**

GE Healthcare (GEHC), a business unit of General Electric Canada (GE) sells and offers for sale a wide range of electrical and electronic equipment for use in the medical and health care sector in Canada. Although GEHC operates distribution and handling facilities in Canada, it does not operate or own a manufacturing facility in British Columbia ("BC").

GE Healthcare is proposing its own product stewardship plan (the "stewardship plan") for those Phase 5 products of the electronic and electrical product category under BC's Recycling Regulation (the "Phase 5 Category") that exceed 200 kilograms in weight and are excluded from the Stewardship Plan submitted by EPRA BC (Electronic Products Recycling Association of British Columbia).

This stewardship plan is being submitted in a manner and format that we trust is satisfactory to the Director for those Phase 5 products that exceed 200 kilograms in weight, that GEHC, as producer, sells, offers for sale or distributes in BC and that are excluded by the EPRA Stewardship Plan. GEHC does not sell, offer for sale or distribute any of the products under this plan to retail consumers, including through retail sales. Instead, the products covered by this stewardship plan are sold by GE, offered for sale, distributed or used in a commercial enterprise for health care and medical professionals.

GE Healthcare is currently a member and a registered producer with the EPRA BC (Electronic Stewardship Association of British Colombia) for Phase 1 and 2 products. As EPRA BC has an approved end-of-life electronics program for Phase 1 and 2 products, GEHC has appointed EPRA BC as their agent to meet these obligations under the *B.C. Recycling Regulation*. GEHC currently reports and submits the appropriate EHF (environmental handling fee) to EPRA BC on a monthly basis, for those products that fall under Phase 1 and 2 (ie: computers, monitors, computer peripherals etc.) and are sold as part of medical equipment and devices into the province of B.C.

GE Healthcare Product Stewardship Plan

On June 18, 2012, GE Healthcare registered with EPRA BC for those Phase 5 products covered by their Stewardship Plan.

We understand that the EPRA BC submitted their Stewardship Plan for 2012-2016 on September 7, 2011 to the B.C. Ministry of Environment for review and approval and has included Phase 5 products in this plan and received MOE approval on April 23, 2012.

GE Healthcare is committed to managing its products in an environmentally responsible manner by designing products for improved environmental performance to:

- facilitate re-use and recycling at the EOL (end-of-life) stage,
- minimize the use of restricted hazardous materials,
- improve energy efficiency; and
- to continually evaluate and develop technologies which allows a reduction in the types and quantities of waste materials generated.

GE Healthcare has extensive product take-back and recycling programs that are offered to our customers for the environmental management of GE products. Re-use and recycling reduces the environmental impact of a product as well as providing a method of cost recovery for products that retain commercial value. GE Healthcare operates a Renewable Resource Centre in Oak Creek, Wisconsin which is involved in the reprocessing of approximately 6 million kilograms of obsolete medical equipment and parts each year. Further details on GEHC's take-back and recycling programs are included in Section 10 of this plan.

GE Healthcare is submitting this stewardship plan for those Phase 5 products and parts in order to offer an avenue to eliminate or reduce the environmental impacts of GEHC products at end-of-life. In addition, GE Healthcare services equipment currently being used by its' customers that may no longer be manufactured or sold. Parts and critical components from the existing install base are reclaimed, refurbished and re-used in order to continue to provide patient care and reduce capital expenditures for our customers.

GE Healthcare Product Stewardship Plan

2. Products Included in the Stewardship Plan

Per Schedule 3, Section 2.3 of the *B.C. Recycling Regulation* (effective July 1, 2012), the electronic and electrical product category is expanded to include the following products:

- (d) electronic or electrical medical devices or equipment for detecting, preventing, monitoring, treating or alleviating illness, injury or disability, except those devices that have been implanted in a person or have been exposed to infectious matter.

The following is a list of products applicable to this Stewardship Plan that are in the Phase 5 Category and may exceed 200 kilograms by weight, which GE Healthcare, as producer, sells, offers for sale, distributes or uses in a commercial enterprise in British Columbia. The list describes the products to the best of our knowledge, at this time, and will be reviewed and updated as appropriate.

Equipment Type	GE Healthcare Equipment and Modalities
Radiology and Diagnostic Imaging	<ul style="list-style-type: none"> ● X-Ray: The X-Ray portfolio is comprised of radiography, fluoroscopy, mammography, bone densitometry, & body composition. ● Computed Tomography (CT): CT Equipment are designed to quickly diagnose and guide treatment of every disease with the most innovative CT scanners and advanced imaging solutions. This includes workstation equipment such as computers and monitors. ● Magnetic Resonance (MR): The MR product portfolio offers a system from wide bore scanners to specialty scanners for musculoskeletal imaging to all-purpose 1.5T scanners. MR provides high definition results, offering the broadest range of applications, to meet a variety of clinical imaging needs. ● Molecular Imaging (MI): MI enables healthcare providers to detect and diagnose disease earlier, and to evaluate treatment efficacy more quickly. MI includes Positron Emission Tomography (PET), Nuclear Medicine, Radiopharmacy and Pre-Clinical Imaging.
Hospital & Medical Equipment	<ul style="list-style-type: none"> ● Interventional and Surgery Products: Interventional and surgery products include all equipment and products used to treat diseases besides diagnosis. Among this modality, there are products of surgical applications. ● Patient Care Solutions (PCS): PCS equipment mainly includes monitoring of patients. Today, GE Healthcare is integrating patient monitors, state-of-the-art parameters, wireless devices, workflows and integrated IT solutions to create a fluent system of clinical intelligence.

3. Product Recovery Targets

GE Healthcare is committed to achieving the highest recovery rates feasible for the products, in light of all applicable circumstances, including the nature of the products and the purchasers of the products, which do not include sales to retail consumers. Generally, the recovery rate is a measurement of what is collected over what is sold. Medical device monitoring and control instrumentation products typically have a lengthy useful life, and therefore a significant lag time between date of purchase and disposal of an end-of-life product. Furthermore, given the capital investment for these products, customers are inclined to maintain these devices rather than incur additional capital investments.

GE Healthcare's ability to meet a set recycling target may be impacted by several influencing factors. GE Healthcare customers may elect to sell or donate obsolete or retired medical devices to a 3rd party which may be out of province or out of Country. In this case, the owner of the medical device will transfer the title of the device to the 3rd party. As a result, this will directly impact the recovery rate achieved by GE Healthcare. Also, the ability to meet the recycling target may be impacted by the availability, delays and conditions imposed by the *Export and Import of Hazardous Waste and Hazardous Recyclable Materials Regulations* (enacted under the Canadian Environmental Protection Act, 1999) should any materials captured by Phase 5 be subject to those requirements.

As such, in light of the nature of the products, GE Healthcare will undertake to conduct a study for the first 18 months of the program to determine the best measurement to be used to determine the appropriate recovery rate for the Stewardship Plan.

4. Stakeholder Consultation

GE Healthcare recognizes that stakeholder involvement starts at the design of the consultation plan. It is important to note that, for the products under the stewardship plan, GE Healthcare does not sell, offer for sale or distribute these products to retail consumers. Sales of medical devices occur, directly to hospitals, health care or medical facilities. Sales of

GE Healthcare Product Stewardship Plan

monitoring and control instrumentation occur directly to healthcare facilities as well as universities, research and development centers and pharmaceutical manufacturers. As such, the consultation process involves a limited number of specific stakeholders.

To develop the stewardship plan, GE Healthcare consulted with its major customers as well as other stakeholders such as existing product stewardship agencies such as EPRA BC, Product Care and CESA, MEDEC¹, trade associations and the B.C. MOE (Ministry of the Environment). GE Healthcare offered a series of live webinars and teleconferences with its major customers located in British Columbia, including Vancouver Island Health Authority, Interior Health Authority, Northern Health Authority and Fraser Health Authority. Stakeholders were encouraged to review the document and send their comments and questions directly to GE Healthcare. The results of the consultation including specific stakeholder feedback have been included in Appendix A.

GE Healthcare will also continue to solicit feedback from stakeholders, customers, governments, product stewardship agencies, waste and recycling vendors, and others whose interests may be affected by the plan. Stakeholders will be encouraged to provide GE Healthcare ongoing comments prior to and during the implementation of the stewardship plan. In addition, details and contact information regarding the GE Healthcare B.C. Product Stewardship Plan will be posted on GEHC's external public website and updated as necessary as the plan is implemented.

5. Collection System

GE Healthcare will arrange for collection and management of those products weighing > 200 kilograms that it sells, offers to sell or distributes in B.C. Given the products do not include sales or distribution to retail consumers, there is no need for consumers to have access to collection facilities related to the plan.

It is very important to note that given the use of the products listed above, products must be properly decommissioned and disinfected prior to take-back. For example, certain products utilizing radioactive sources or which generate ionizing radiation are regulated by the

GE Healthcare Product Stewardship Plan

Canadian Nuclear Safety Commission (CNSC), and the licensee has legal requirements to properly decommission products at end of life. In most cases, GE Healthcare is not the CNSC licensee and therefore not authorized to perform the licensee obligations. Other products will be used in medical procedures and therefore will be exposed to biohazardous materials. It is the customer's obligation to disinfect or sterilize the equipment prior to product take-back.

GE Healthcare will use its existing take-back and recycling process for the collection, transportation and processing of end-of-life electronic medical devices and equipment exceeding 200 kilograms in weight. This process involves contracting with an existing service provider (s) for the transportation from collection sites to the processor(s) or recycler(s). Standards and procedures for the collection, transportation, and recycling services will be developed in compliance with applicable local, provincial and federal regulations. Compliance to these standards and procedures will be required of all service providers and GE Healthcare facilities which will be verified through EHS (environmental, health & safety) audits. GE Healthcare 's Stewardship Plan does not apply to medical devices or obligated products that have been exposed to infectious matter unless these products are properly decommissioned, disinfected and/or sterilized.

GE Healthcare will communicate with its customers directly regarding the details of the product take-back and recycling programs available for those products exceeding > 200 kilograms in weight and inform them of the EPRA BC program for obligated products < 200 kilograms. A tracking system will be utilized to track all obligated GE Healthcare products exceeding > 200 kilograms from the point of collection in B.C. to final disposition stage.

6. Environmental Handling Fees

GE Healthcare is currently evaluating the application of an environmental handling fee (EHF) to cover the costs of collection, transportation, recycling and administration costs required to operate and administer the program for those products > 200 kilograms in weight.

GE Healthcare Product Stewardship Plan

Prior to initiating an EHF for products weighing > 200 kilograms, the Product Stewardship Plan will be revised and re-submitted to the B.C. MOE and our customers will be notified regarding the change in fee structure.

7. Consumer Awareness

Given that the GE Healthcare products (obligated products exceeding > 200 kilograms in weight) do not include sales or distribution to retail consumers, there is no need to make consumers aware of the stewardship plan, location of collection facilities or how to manage the products in a safe manner.

GE Healthcare has and will continue to make its customers aware of this stewardship plan through direct involvement and posting. In addition, consumers and customers will be able to access the GE external public website for details regarding the GE Healthcare Stewardship Plan involving those products exceeding 200 kilograms in weight.

8. Program Performance Measurements

The Stewardship Plan will be managed and assessed by GE Healthcare. GE Healthcare will assess (i) the performance of the stewardship plan, (ii) the management of costs incurred for the plan and (iii) the management of environmental impacts of the plan, if any and modify the plan accordingly.

GE Healthcare will develop an annual report describing the performance of the plan, as well as plans for further continuous improvement where practicable. To assess the annual performance of the plan, information will be collected on the GE equipment covered by the Stewardship Plan from de-installs, performed by GEHC, estimates of GE Healthcare product expected lifespans, and the GEHC equipment installed in the province of B.C. This data will be compared to the actual performance by tracking the amount of equipment returned, where it went and the application of the Pollution Prevention Hierarchy. GEHC will seek to modify data collection efforts to support program performance measurements.

GE Healthcare Product Stewardship Plan

As stated in Section 3 of this plan, GE Healthcare will undertake to conduct a study for the first 18 months of the program to determine the most appropriate measurement to be used to determine the appropriate recovery rate for the Stewardship Plan. Once the performance measurements are clearly defined, GE Healthcare will then submit to the B.C. MOE by July 1 each year, and post on its external website a copy of its report on the stewardship plan.⁴ The report will document the performance in GE Healthcare's adherence to the plan, and will include any steps that GE Healthcare will do to reduce or eliminate any gap between actual and projected performance.

9. Dispute Resolution

Any dispute, between GE Healthcare as a producer and a person providing services related to the collection and management of products will be resolved in accordance with the terms and conditions of specific contracts, including dispute resolution procedures and applicable law. Otherwise, GE Healthcare will handle disputes in a responsible, timely and commercially reasonable manner.

10. Product Life Cycle Management

GE Healthcare is committed to managing its products in an environmentally responsible manner by designing products for improved environmental performance, energy efficiency and minimizing the use of restricted hazardous materials. Where practicable, GE Healthcare will strive to eliminate or reduce the environmental impacts of the products throughout the product's life cycle.

Ecomagination

Ecomagination is a GE-wide business initiative to help meet customers' demand for more energy-efficient products and to drive reliable growth for GE.⁵ GE Healthcare's ecomagination products are aimed at helping healthcare companies and hospitals reduce cost and waste while positively impacting the environment. In order to be recognized as an

GE Healthcare Product Stewardship Plan

ecomagination offering, each product has to complete a rigorous review process of the operating and environmental performance improvements it delivers to customers.

The Signa HDe 1.5T Magnetic Resonance Imaging system was one of the first GE Healthcare products to receive ecomagination product certification. Magnetic resonance imaging (MRI) is a medical imaging technique used to visualize the structure and function of the body. It provides detailed images of the body in any plane. This system is currently the most energy efficient 1.5T MRI system commercially available, consuming 62 percent less energy than previous generation systems by integrating software and hardware as well as the use of water-cooling technology. Under normal operating conditions, the HDe saves a clinic or hospital about 100,000 kWh per year.

The GE Healthcare ecomagination portfolio contains the following additional products:

- ✚ Centricity™ Enterprise Electronic Medical Records
- ✚ Wave™ Bioreactor for Biotherapeutics Production
- ✚ +PLUSPAK™ Polymer Bottle
- ✚ Digital Mammography
- ✚ Digital X-Ray
- ✚ High Efficiency CT (Computed Tomography) Systems
- ✚ High Efficiency MR (Magnetic Resonance) Systems™
- ✚ Hospitals Inspired by ecomagination
- ✚ Voluson™ E Series Ultrasound

GE Healthcare's Centricity Enterprise software solution is an integrated clinical, financial and administrative Electronic Medical Record (EMR) solution that assists hospitals in saving lives, time and money.

GE's WAVE Bioreactor system, used for vaccine and other biotherapeutics production, enables cell culturing without requiring cleaning or steam sterilization by using disposable bags rather than large stainless steel tanks. This method reduces water and energy consumption, as well as staff time requirements, compared to the stainless steel bioreactor

GE Healthcare Product Stewardship Plan

it replaces. GE's WAVE Bioreactor system reduces annual energy consumption for users by up to 43%.

GE Healthcare's +PLUSPAK™ polymer bottle for contrast media offers significant advantages over traditional glass packaging, including less cost for waste disposal, reduced storage, and improved workplace safety for healthcare workers who administer contrast media to patients. By using the GE Healthcare +PLUSPAK™ polymer bottle, a radiology department can reduce the weight of its contrast media red bag waste by over 75%.

Energy Efficiency

GE Healthcare is proactively participating in the voluntary agreement of the ErP Energy Related Products Directive which focuses on reducing energy consumption of targeted medical devices.

Restriction of Hazardous Substances

GEHC has initiated a global strategy to redesign products for the minimization of specific hazardous substances, cadmium, mercury, hexavalent chromium, lead, PBB's and PBDE's from the electrical and electronic equipment.

11. Pollution Prevention Hierarchy

GE Healthcare will manage the products in adherence to the order of preference in the pollution prevention hierarchy.

Below is the pollution prevention hierarchy, in descending order of preference:

1. Reduce the environmental impact of producing the product by eliminating toxic components and increasing energy efficiency and resource efficiency
2. Redesign the product to improve reusability or recyclability
3. Eliminate or reduce the generation of unused portions of a product that is consumable
4. Reuse the product
5. Recycle the product
6. Recover material or energy from the product
7. Otherwise dispose of the waste from the product in compliance with applicable laws

As noted in the previous section (Product Lifecycle Management), GE Healthcare has ongoing initiatives to design products for improved environmental performance, energy efficiency and for minimizing the use of restricted hazardous materials.

GE Healthcare has extensive product take-back and recycling programs that are offered to our customers for the management of GE devices and instruments at end-of-life. GEHC may refurbish and re-sell medical devices such as X-ray machines, MR units, CT scanners etc. as well as medical instrumentation. One example of an instrument take-back program involves the MicroCal line of products.² MicroCal instruments are used in the field of biocalorimetry. These systems are designed and optimized for analysis of biomolecules in solution and are widely used at major pharmaceutical, biotech, academic and government institutions worldwide. GE Healthcare has instituted a product take back program for the collection, treatment, re-use, recovery, recycling and disposal of MicroCal products at the end of their life cycle.³

GE Healthcare Product Stewardship Plan

GE Healthcare also offers collection and recycling services to our customers for both GE and non-GE medical devices and instruments. At end-of-life, many of our products retain an inherent value, parts and components are reclaimed for re-use and the majority of the metals, electronic circuit boards, and other materials are recycled.

GE Healthcare operates a Renewable Resource Centre (RRC) in Oak Creek, Wisconsin which is involved in the reprocessing of approximately 6 million kilograms of de-installed and returned medical equipment and parts each year. The Oak Creek facility receives a wide variety of devices and parts, including:

- Diagnostic imaging and biomedical equipment that customers have retired.
- Obsolete or excess parts from the GE Healthcare supply chain.
- Batteries, circuit boards and other returned parts.
- Scrap materials from GE Healthcare facilities in the United States & Canada.

The Renewable Resources Centre has a current combined reuse, redeploy and/or recycling rate of 94 percent with only 6% of the incoming material, by weight, being disposed of by the RRC. Imaging systems may be sent to repair suppliers for use as test beds for repair parts. Others are disassembled and the usable components are reclaimed or placed into inventory or added to our repair pools. The remainder is separated into material streams for recycling.

Of all material received:

- About 30 percent is redeployed or reused in some manner.
- About 64 percent (batteries, circuit boards, metals, fluids, glass and other items) goes to GE-approved processors and salvage dealers for recycling.
- Just 6 percent (such as fiberglass and plastics) is landfilled.

12. References

1. MEDEC website link: <http://www.medec.org/>
2. MicroCal Product Info: <http://www.microcal.com/products/>
3. MicroCal Take-Back link: <http://www.microcal.com/about/weee-rohs.asp>
4. GE Healthcare Website <http://www.gehealthcare.com>
5. Ecomagination Website <http://www.ecomagination.com/about>
6. GE Citizenship Website <http://www.gecitizenship.com/>

GE Healthcare Product Stewardship Plan

Appendix A

Stakeholder Consultation Summary

GE Healthcare consulted with its major customers as well as other stakeholders such as existing product stewardship agencies such as EPRA BC, Product Care, CESA, MEDEC, trade associations and the B.C. MOE. Stakeholders have been encouraged to review the Product Stewardship plan and send their comments and questions directly to GE Healthcare.

GE Healthcare offered a series of live webinars and teleconferences with its major customers located in British Columbia. Table 1 below, provides a summary of the customer stakeholder meetings and dates completed.

Table 1. Stakeholder Consultation Meetings / Webinars:

No.	Stakeholder / Customer Consultation	Date Completed
1	VIHA (Vancouver Island Health Authority) Victoria, British Columbia	October 25/2011
2	Interior Health Authority Kelowna, British Columbia	November 3/2011
3	Northern Health Authority Prince George, British Columbia	Did not accept webinar invitation.
4	Fraser Health Authority Surrey, British Columbia	October 26/2011

GE Healthcare Product Stewardship Plan

During the webinar / stakeholder consultation meetings, GE Healthcare reviewed the following topic areas and requested feedback on the following elements of the GE Healthcare Stewardship Plan:

- Electronics Regulation Status (by Province)
- Background on B.C.'s Recycling Regulation / Producer Responsibilities / Obligated Products, Phase 5 Medical Devices & July 1/2012 deadline
- GE Healthcare's Stewardship Plan Elements
 - Overview of the Stakeholder Consultation Process
 - GE Healthcare - Applicable Phase 5 Products
 - Product Recovery Targets
 - Performance Measurements
 - GE Healthcare's Environmental Commitment & Existing Medical Device Recycling Facility / Program
 - GE Healthcare online references
 - Questions & Feedback Communication Details (contact details, phone & email) for Stakeholders to provide comments on plan.

All Customers / Stakeholders noted in Table 1 were provided with a copy of the webinar materials. In addition, webinar materials were also circulated to the Chair of the British Columbia Clinical Engineering Committee and were discussed during their November 4th, 2011 meeting. All Stakeholders were requested to provide GE Healthcare with comments and feedback on the Stewardship Plan prior to submitting the plan to the B.C. MOE on November 14, 2011.

Stakeholders, Customers and the Chair of the B.C. Clinical Engineering Committee were provided with the final submitted GE Healthcare Product Stewardship Plan on Feb 17/2012.

The results of the consultation including specific stakeholder feedback can be found below in Table 2.

GE Healthcare Product Stewardship Plan

Table 2. Stakeholder Consultation Comments & Feedback

#	Comment	Response
Topic: General		
1	This is the first time hearing about the B.C. Regulation affecting medical devices, Stewardship Plans etc. It has not yet filtered down to the Hospital Directors that are responsible for waste and product recycling. No other manufacturers have contacted us.	Stakeholders can refer to the B.C. MOE's website (Product Stewardship) for additional details on the Recycling Regulation. http://www.env.gov.bc.ca/epd/recycling/
2	GE Healthcare's Stewardship Plan has a good focus on the environment / environmental commitment, following P2 hierarchy, energy efficiency, reducing hazardous substances and recycling.	Refer to GE's Environmental Commitment for more information.
3	Stakeholder Engagement: As a result of GE Healthcare Stakeholder Consultation meetings, it is suggested that the topic be added to the Clinical Engineering Committee quarterly meeting agenda (all B.C. Engineering Directors) for wider engagement.	Materials were provided to the Chair of the Clinical Engineering Committee and discussed at the quarterly meeting.
4	Is the regulation retroactive? Is the producer required to take back equipment sold 10 years ago?	It is our understanding that as of July 1, 2012 producers wishing to continue to sell, offer for sale, distribute or use an obligated product are required to operate a stewardship program for the product regardless of when the product was sold. Stakeholders should consult with their own legal counsel for additional regulatory guidance. GE Healthcare will take back those products it continues to sell, offer for sale, distribute or use in a commercial enterprise after July 1, 2012.

#	Comment	Response
Topic: Logistics		
5	Product Take Back: Currently, we are recycling our waste electronics and medical devices locally. How large a shipment is needed to collect a waste medical device? Need to have space to collect and store equipment. Where will it be shipped? There may be more paperwork and separation work for us.	It is not a requirement that you utilize the GE recycling program if there is a preference to recycle locally. For GE Healthcare products < 200 kg in weight, GE has appointed the EPRA B.C. (formerly ESABC) as their stewardship body. Contact EPRA directly in order to arrange for recycling of your < 200 kg GE Healthcare obligated products. http://www.esabc.ca/cfm/index.cfm GE will continue to provide product take-back services for those obligated products weighing > 200 kg. GE Healthcare stores obsolete electrical and electronic products in Ontario before shipping them to the GE Renewable Resource Centre in Oakcreek, WI.

GE Healthcare Product Stewardship Plan

#	Comment	Response
Topic: Costs / EHF's		
6	Will costs be transferred to the Customer using an Environmental Handling Fee (EHF)?	Environmental handling fees (EHFs) may be applied depending on the specific project or sale. GE is in the process of developing an EHF structure that makes sense for both GE and our customers. Communication and details will be provided to customers prior to the implementation of an EHF program.

#	Comment	Response
Topic: Title Transfer / Ownership of Medical Device		
7	Most (~95%) of devices are recycled by companies in the lower mainland or local vendors purchase to remarket for vets or offshore (transfer of title). Who is responsible for take-back in this situation?	GE Healthcare meets the definition of "producer" under the B.C. Recycling Regulation if it sells, offers for sale, distributes or uses the obligated product in a commercial enterprise in B.C. If the sale is outside B.C., GE would not be considered the "producer" under the B.C. Recycling Regulation. If a product is resold by a customer, GE Healthcare would take back the product so long as it remains in British Columbia.
8	In the case of new equipment installs and de-installs of obsolete equipment, other companies may be contracted to remove GE waste medical devices and visa versa. Title of the waste medical equipment will transfer from the hospital to GE or the other company. Is GE responsible for what the other company does with GE equipment if awarded the contract?	GE continues to collaborate with other major manufacturers and distributors in the medical industry to determine the simplest method for tracking waste medical equipment during equipment de-installs. For GE Healthcare products < 200 kg in weight, GE has appointed the EPRA B.C. (formerly ESABC) as their stewardship body. Contact EPRA directly in order to arrange for recycling of your < 200 kg GE Healthcare obligated products. http://www.esabc.ca/cfm/index.cfm GE will continue to provide product take-back services for those obligated products weighing > 200 kg per the GE Healthcare Stewardship Plan. As part of this plan, a recovery rate metric will be developed over the next 12-18 months. Contact GE directly, if you have any questions regarding obsolete or waste GE equipment.