



Waste

Municipal Solid Waste Disposal in B.C. (1990-2012)

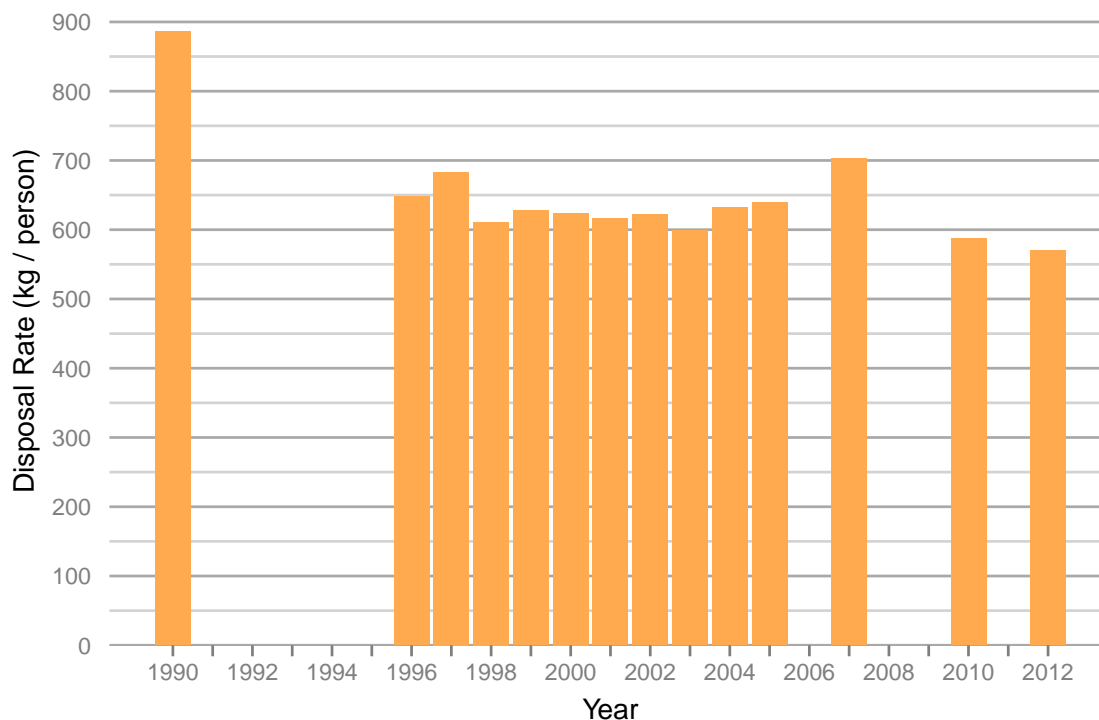
What is municipal solid waste?

Municipal solid waste includes waste from residential, commercial, institutional, demolition, land clearing and construction sources. It does not include hazardous waste, biomedical waste, agricultural waste, motor vehicles or components, or contaminated soil.

- BC Stats estimates that 2.9 million tonnes of solid waste were disposed of in B.C.'s landfills in 2010 and that disposal will increase by 17.5% by 2025 if current practices continue¹.
- This increasing waste disposal rate will put pressure on local government waste management budgets.
- Much of the waste disposed of could be composted or recycled, or not generated in the first place.
- Tracking waste disposal across B.C. is important as we work to reduce the amount of waste we create and avoid waste disposal where possible.

The following chart shows the per-capita municipal solid waste disposal rate in British Columbia, from 1990-2012.

Municipal Solid Waste disposal rates in British Columbia, 1990–2012



Comparisons:

- Nova Scotians disposed of approximately 401 kg of waste per person in 2010, with a target to [reduce this to 300 kg per person by 2015](#). This is the lowest provincial rate in Canada.
- *The 2012 provincial per capita disposal rate was 570 kg/person.*
- By 2025 daily global garbage generation could reach 6 million tonnes, enough to fill a line of garbage trucks 5,000 kilometres long every day.².

The table below shows the per capita weight of solid waste disposed of in each regional district in B.C. for selected years from 1990-2012 (Table 1). For the full dataset, see the “Data” section below.

Table 1: Estimated disposal rates (kg/person) for B.C. regional districts in 1990, 2000, 2005, and 2012

Regional District	1990		2000		2005		2012	
	Population	Rate	Population	Rate	Population	Rate	Population	Rate
Alberni-Clayoquot	30257	550	34000	511	32692	839	31090	759
Bulkley-Nechako	37136	700	44204	610	43933	470	39679	599
Capital	291880	620	334940	408	351022	452	368728	394
Cariboo	58641	400	73549	360	70329	406	62861	709
Central Coast	3500	400	4332	350	3905	256	3258	N/A
Central Kootenay	49587	701	61790	301	60237	494	58864	477
Central Okanagan	103304	1210	152000	643	167936	492	183912	609
Columbia-Shuswap	40510	710	52973	408	53245	603	50993	602
Comox Valley	N/A	N/A	N/A	N/A	N/A	N/A	63994	680
Cowichan Valley	59059	770	76820	366	76523	415	81780	297
East Kootenay	48773	700	62240	716	61862	873	57093	818
Fraser-Fort George	85971	700	106933	711	101601	812	94064	871
Fraser Valley	209641	945	243008	502	264370	499	285735	709
Kitimat-Stikine	39431	700	46870	469	42919	476	37818	750
Kootenay Boundary	30425	850	34065	474	33118	471	31168	668
Metro-Vancouver	1610899	990	2041399	722	2188573	706	2417081	561
Mount Waddington	14086	900	15058	528	13684	526	11452	573
Nanaimo	91879	550	137003	406	141080	496	148464	354
North Okanagan	57611	1040	79047	551	80474	654	81739	489
Northern Rockies	4565	1800	6434	1088	6607	1695	6035	N/A
Okanagan-Similkameen	66239	1200	80448	1075	83037	1001	81954	662
Peace River	50083	920	57726	764	62967	969	62273	871
Powell River	18728	690	21060	251	21114	225	20091	387
Skeena-Queen Charlotte	22700	790	25514	541	22464	N/A	18948	778
Squamish-Lillooet	32437	1200	45523	651	54367	554	56092	499
Stikine	N/A	N/A	N/A	N/A	N/A	N/A	623	N/A
Strathcona	N/A	N/A	N/A	N/A	N/A	N/A	43619	645
Sunshine Coast	19119	900	27438	423	28557	493	29115	401
Thompson-Nicola	104386	670	130192	582	128790	690	130541	630

Notes:

- The 2012 disposal rates were provided by regional districts and municipalities, or where data was missing, estimated by the Ministry of Environment based on available information.
- In some cases a verifiable estimate was not available; these cases are marked with N/A.
- The composition of waste counted towards per capita disposal may vary between regional districts. Data comparability may also vary due to other factors such as regional district staff resources and use of weigh scales and landfill tipping fees.
- The 2012 Squamish-Lillooet Regional District per capita disposal rate accounts for tourist and visitor populations, which are significant for this area.
- The disposal rates cannot be directly compared between years because the data were collected using different methods. However, the data are useful in showing general patterns.

Regional districts that wish to update the waste disposal data reported above should contact the Environmental Standards Branch at eqb@victoria1.gov.bc.ca. Input from regional districts will also serve to inform future waste reporting methodology development.

References and Other Useful Links:

Find out where to recycle using the Recycling Council of British Columbia's Recyclepedia: <http://www.rcbc.bc.ca/>

Extended Producer Responsibility in B.C.: <http://www2.gov.bc.ca/gov/topic.page?id=BEBA70369C274C8FBA4FB42BE828A9EB&title=Product%20Stewardship>

Solid Waste Management Planning in B.C.: <http://www2.gov.bc.ca/gov/topic.page?id=CBCECCAABAA2401B9FB3B7CE63129709>

¹BC Stats: Solid Waste Generation in British Columbia: 2010-2025 Forecast (report and fact sheet): <http://www.bcstats.gov.bc.ca/Publications/AnalyticalReports.aspx>

²Hoorweg, D., P. Bhada-Tata, C. Kennedy. 31 October 2013. Environment: Waste production must peak this century. *Nature* 502: 615-617. doi:10.1038/502615a <http://www.nature.com/news/environment-waste-production-must-peak-this-century-1.14032>

2007: Trends in Municipal Solid Waste Disposed and Recycled: http://www.env.gov.bc.ca/soe/archive/reports/et07/EnvironmentalTrendsBC_2007_fullreport.pdf#page=41

British Columbia's *Environmental Management Act*: <http://www.env.gov.bc.ca/epd/main/ema.htm>

Waste Management in Canada; Statistics Canada (2012); see section 3.1, Municipal solid waste: <http://www.statcan.gc.ca/pub/16-201-x/16-201-x2012000-eng.pdf>

Data

*By accessing these datasets, you agree to the license associated with each file, as indicated below.

- Municipal solid waste disposal, 1990-2012: http://pub.data.gov.bc.ca/datasets/178704/BC_Municipal_Solid_Waste_Disposal.csv.
- *License:* B.C. OGL (<http://www.data.gov.bc.ca/local/dbc/docs/license/OGL-vbc2.0.pdf>).
- *Dataset Details:* <http://www.data.gov.bc.ca/dbc/catalogue/detail.page?config=dbc&P110=recordid:178704>.

Published and Available On-Line at Environmental Reporting BC (July 2014): http://www.env.gov.bc.ca/soe/indicators/waste/municipal_solid_waste.html