

The Government of the Province of British Columbia
Ministry of Environment
Water Management Branch

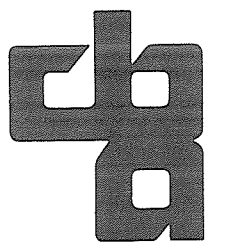
Canada – British Columbia
Fraser River Flood Control 1968 Agreement
Project No. 7 District of Mission

DRAWING LIST

CONTRACT DRAWINGS

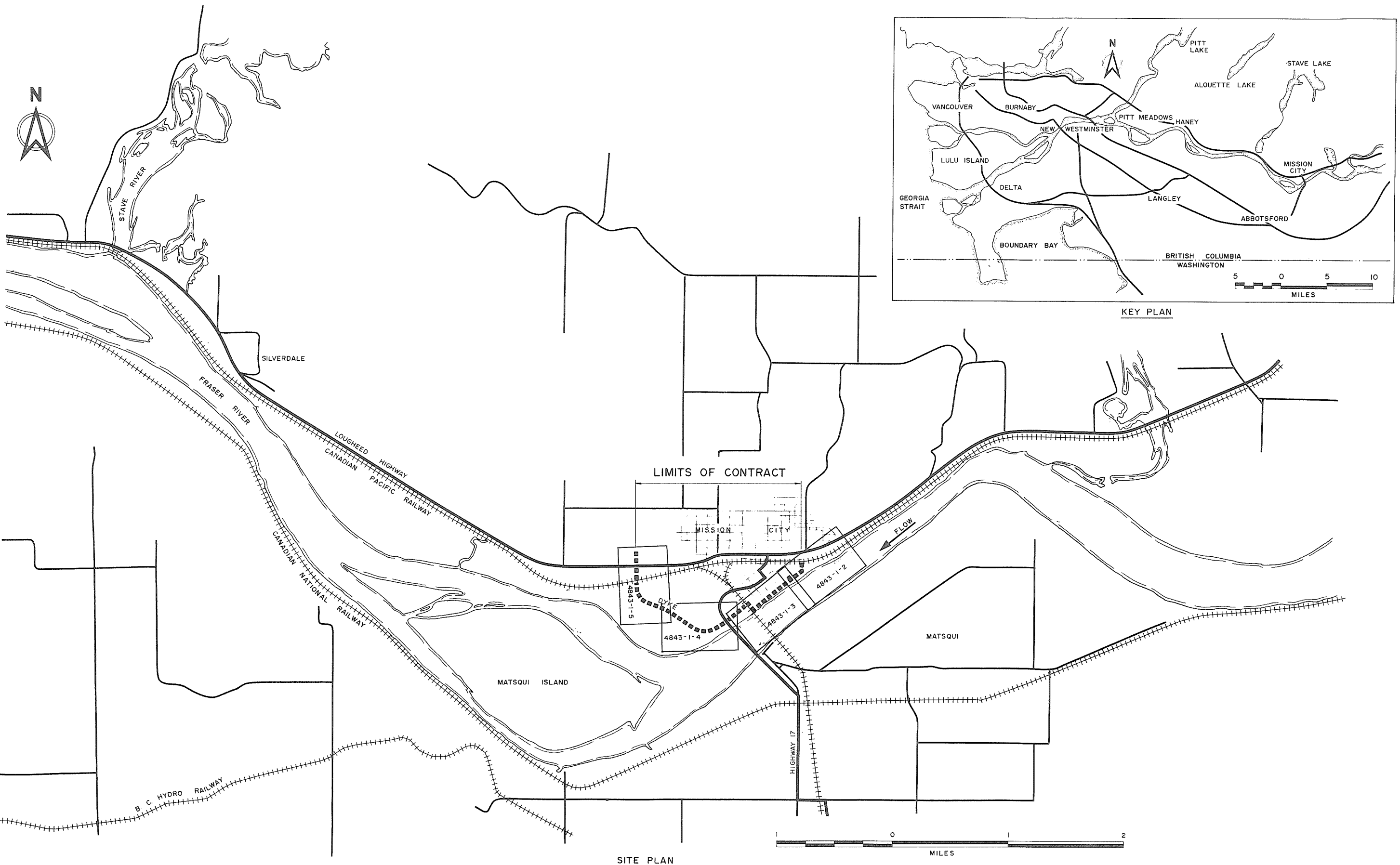
4843-1-1 A KEY PLAN AND SITE PLAN
4843-1-2 A ALIGNMENT PLAN, SHEET 1 OF 4
4843-1-3 A ALIGNMENT PLAN, SHEET 2 OF 4
4843-1-4 A ALIGNMENT PLAN, SHEET 3 OF 4
4843-1-5 A ALIGNMENT PLAN, SHEET 4 OF 4
4843-1-6 A DYKE PROFILE

**Contract No. 1
Mission Dykes**





CBA ENGINEERING LTD

Consulting Engineers
Vancouver, Canada

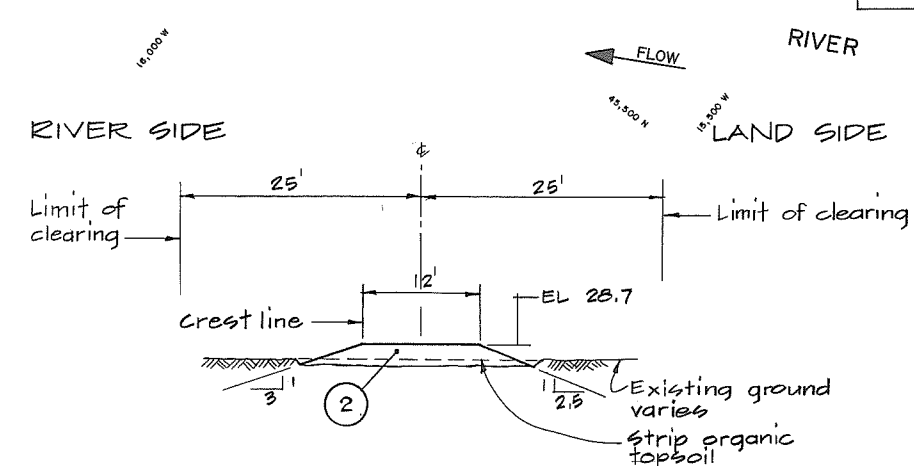
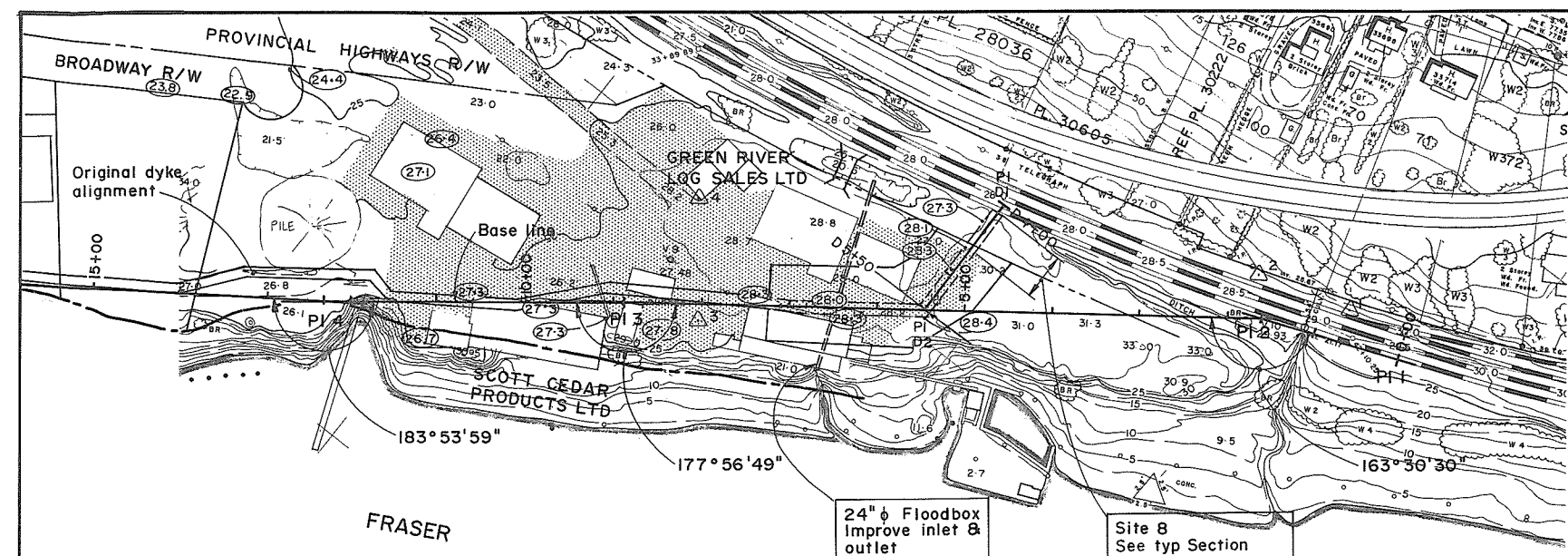


SITE PLAN

KEY PLAN

 CBA ENGINEERING LTD. CONSULTING ENGINEERS - VANCOUVER - CANADA	NO. BY REVISIONS DATE	A PLC As constructed March 1990	RECOMMENDED CHIEF, PROJECTS DIV DATE	 Province of British Columbia Ministry of Environment WATER MANAGEMENT BRANCH CANADA - BRITISH COLUMBIA FRASER RIVER FLOOD CONTROL 1968 AGREEMENT	DESIGNED SURVEYED DRAWN <i>yeo/13</i> DATE
		APPROVED DIRECTOR DATE	PROJECT NO. 7 - DISTRICT OF MISSION CONTRACT NO. 1 - MISSION DYKES KEY PLAN AND SITE PLAN		CHECKED FILE NO. SCALE AS SHOWN DATE DWG. NO. 4843-1-1A SHEET OF SHEETS

Neg No 342039



TYP SECTION
SITE 8 CH D4+10 to CH D4+65

THEORETICAL DYKE PROFILE		
CHAINAGE	DESIGN FLOOD ELEVATION	DESIGN CREST ELEVATION
4+00	26.7	28.7
10+00	26.6	28.6
20+00	26.4	28.4
30+00	26.2	28.2
40+00	26.0	28.0
50+00	25.9	27.9
60+00	25.8	27.8
70+00	25.7	27.7
80+00	25.6	27.6
90+00	25.5	27.5
100+00	25.4	27.4
110+00	25.3	27.3
114+00	25.3	27.3
115+00	29.0	31.0
118+00	29.0	31.0

BASE LINE DATA					
PI	Bearing	Chainage	Interval	Co-Ordinates	
				North	East
1	S 70°21'45" W	0+00.01	162.20	46,312.97	15,091.79
2	S 53°52'15" W	1+12.20	729.46	46,258.46	15,244.56
3	S 51°49'04" W	8+91.66	343.36	45,878.36	15,833.73
4	S 55°43'03" W	12+35.02	355.60	45,616.11	16,103.63
5		15+90.00		45,415.81	16,397.45
D1	N 00°00'00" E	D4+00	150.00	46,179.81	15,557.78
D2		D5+50		46,029.81	15,557.78

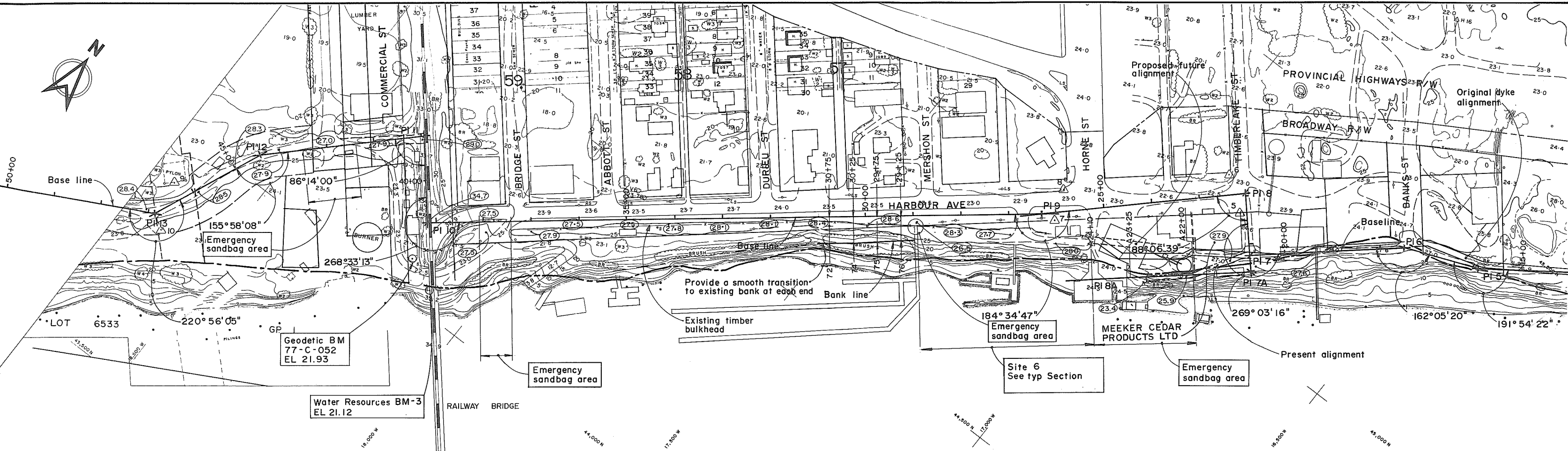
SURVEY MONUMENTS			
Mon	Type	Co-Ordinates	
		North	East
1	Bolt	46,327.23	15,170.82
2	Pipe in concrete	46,295.43	15,275.30
3	Lead plug	45,861.67	15,751.10
4	Lead plug	45,971.69	15,837.73

NOTES
• For General Notes see Dwg 4843-1-7

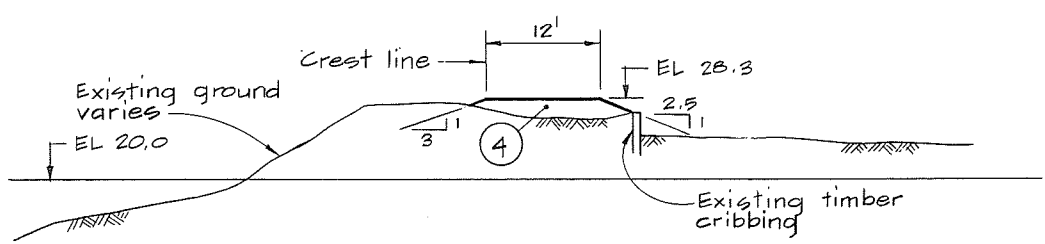
LEGEND
 Asphalt pavement
 Surveyed EL Oct, 1985
 Monument



CBA ENGINEERING LTD. CONSULTING ENGINEERS - VANCOUVER - CANADA	RECOMMENDED _____ CHIEF, PROJECTS DIV.	Province of British Columbia Ministry of Environment WATER MANAGEMENT BRANCH CANADA-BRITISH COLUMBIA FRASER RIVER FLOOD CONTROL 1988 AGREEMENT PROJECT NO. 7 - DISTRICT OF MISSION CONTRACT NO. 1 - MISSION DYKES ALIGNMENT PLAN	DESIGNED <u>DLC/EMH</u> DRAWN <u>WN/EC</u> CHECKED <u>DLC/EMH</u> SCALE <u>AS SHOWN</u> DWG. NO. <u>4843-1-2A</u>	SURVEYED _____ DATE _____ FILE NO. <u>0281550-C25-1</u> DATE <u>MARCH 1990</u> SHEET <u>1</u> OF <u>4</u> SHEETS
	APPROVED _____ DIRECTOR		Neg No 342040	



FRASER RIVER
← FLOW




TYP SECTION
SITE 6 CH 25+30 to CH 28+90

BASE LINE DATA					
PI	Bearing	Chainage	Interval	Co-Ordinates	
				North	West
5	S 67°37'25" W	15+90.62	159.64	45,415.81	16,397.45
6	S 49°42'45" W	17+50.25	323.25	45,355.04	16,545.07
7	N 41°13'59" W	20+73.50	130.09	45,146.02	16,791.65
8	S 46°52'41" W	22+03.50	427.27	45,243.85	16,877.39
9	S 51°27'28" W	26+30.26	1281.63	44,951.79	17,189.25
10	N 39°59'19" W	39+12.49	179.94	44,153.21	18,191.68
11	S 46°14'40" W	40+92.43	346.87	44,291.08	18,307.32
12	S 22°09'48" W	44+39.30	249.34	44,051.19	15,557.86
13		46+88.64		43,820.27	18,651.92
7	S 40°17'15" E	20+73.50	34.00	45,146.02	16,791.65
A7	S 49°42'45" W	A20+73.50	326.50	45,120.08	16,769.66
A8		A24+00.00		44,908.96	17,018.72

SURVEY MONUMENTS			
Mon	Type	Co-Ordinates	
		North	East
5	Lead plug	45,204.49	16,859.13
6	Fire hydrant	45,243.98	16,929.33
7	Nail	44,953.83	17,155.05
8	Lead plug	45,027.81	17,182.78
9	Mark	43,898.26	18,659.30
10	Bolt	43,801.97	18,623.88

NOTES
 • For Legend see Dwg 4843-1-2
 • For General Notes see Dwg. 4843-1-7






CBA ENGINEERING LTD.
CONSULTING ENGINEERS - VANCOUVER - CANADA

RECOMMENDED _____ CHIEF, PROJECTS DIV.

DATE _____

APPROVED _____ DIRECTOR

DATE _____



Province of British Columbia
Ministry of Environment
WATER MANAGEMENT BRANCH
CANADA - BRITISH COLUMBIA
FRASER RIVER FLOOD CONTROL 1968 AGREEMENT
PROJECT NO. 7 - DISTRICT OF MISSION
CONTRACT NO 1 - MISSION DYKES

ALIGNMENT PLAN

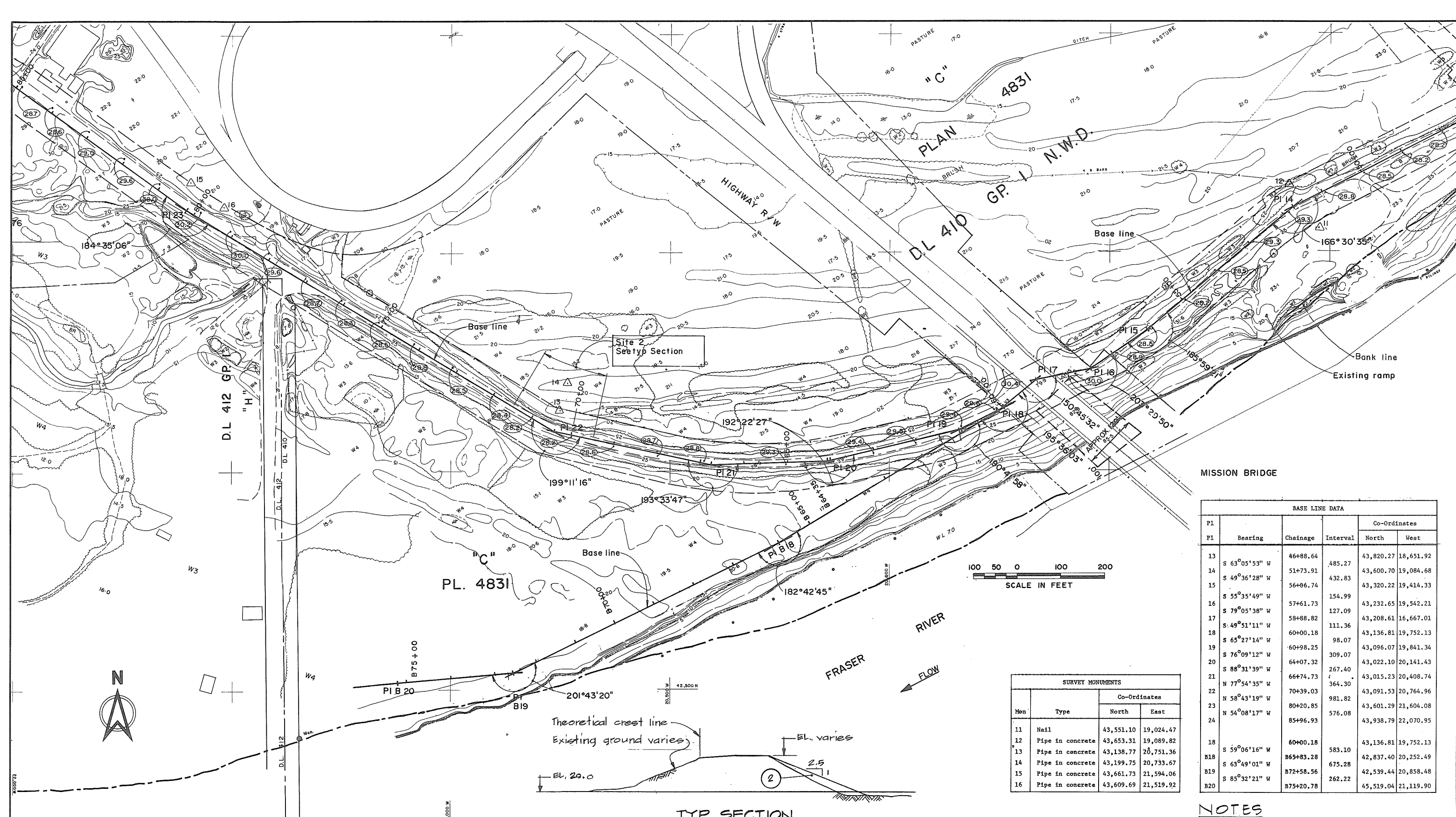
DESIGNED DLC/EMH SURVEYED _____

DRAWN WJH DATE _____

CHECKED DLC/EMH FILE NO. 0281550-C25-1

SCALE AS SHOWN DATE MARCH 1990

DWG. NO. 4843-1-3A SHEET 2 OF 4 SHEETS



MISSION BRIDGE

BASE LINE DATA					
P1	Bearing	Chainage	Interval	Co-Ordinates	
				North	West
13	S 63°05'53" W	46+88.64	485.27	43,820.27	18,651.92
14	S 49°36'28" W	51+73.91	432.83	43,600.70	19,084.68
15	S 55°35'49" W	56+06.74	154.99	43,320.22	19,414.33
16	S 79°05'38" W	57+61.73	127.09	43,232.65	19,542.21
17	S 49°51'11" W	58+88.82	111.36	43,208.61	16,667.01
18	S 65°27'14" W	60+00.18	98.07	43,136.81	19,752.13
19	S 76°09'12" W	60+98.25	309.07	43,096.07	19,841.34
20	S 88°31'39" W	64+07.32	267.40	43,022.10	20,141.43
21	N 77°54'35" W	66+74.73	364.30	43,015.23	20,408.74
22	N 58°43'19" W	70+39.03	981.82	43,091.53	20,764.96
23	N 54°08'17" W	80+20.85	576.08	43,601.29	21,604.08
24		85+96.93		43,938.79	22,070.95
18	S 59°06'16" W	60+00.18	583.10	43,136.81	19,752.13
B18	S 63°49'01" W	865+83.28	675.28	42,837.40	20,252.49
B19	S 85°32'21" W	872+58.56	262.22	42,539.44	20,858.48
B20		875+20.78		45,519.04	21,119.90

SURVEY MONUMENTS			
Mon	Type	Co-Ordinates	
		North	East
11	Nail	43,551.10	19,024.47
12	Pipe in concrete	43,653.31	19,089.82
13	Pipe in concrete	43,138.77	20,751.36
14	Pipe in concrete	43,199.75	20,733.67
15	Pipe in concrete	43,661.73	21,594.06
16	Pipe in concrete	43,609.69	21,519.92

TYP SECTION
SITE 2 CH 69+50 to CH 71+50

NOTES
 • For Legend see Dwg 4843-1-2
 • For General Notes see Dwg 4843-1-7



CBA ENGINEERING LTD.
CONSULTING ENGINEERS - VANCOUVER - CANADA

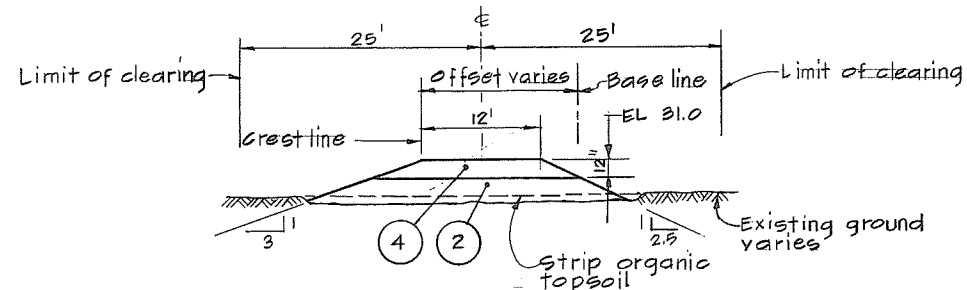
NO.	BY	REVISIONS	DATE
1	RL	As constructed	March 1990

RECOMMENDED _____ CHIEF, PROJECTS DIV.
 DATE _____
 APPROVED _____ DIRECTOR
 DATE _____

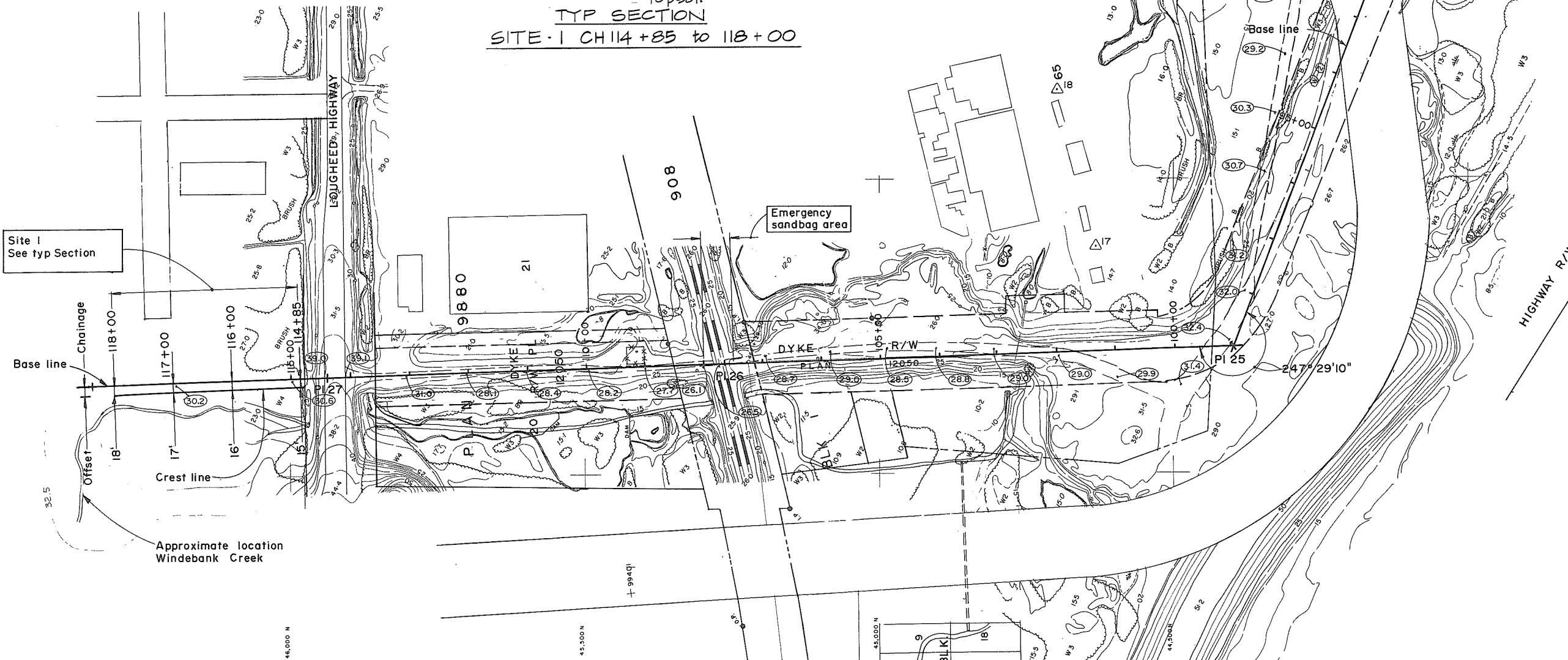
Province of British Columbia
 Ministry of Environment
 WATER MANAGEMENT BRANCH
 CANADA - BRITISH COLUMBIA
 FRASER RIVER FLOOD CONTROL 1988 AGREEMENT
 PROJECT NO. 7 - DISTRICT OF MISSION
 CONTRACT NO. 1 - MISSION DYKES
 ALIGNMENT PLAN

DESIGNED	DLC/EMH	SURVEYED	
DRAWN	WN	DATE	
CHECKED	DLC/EMH	FILE NO.	0281550-C25-1
SCALE	AS SHOWN	DATE	MARCH 1990
DWG. NO.	4843-1-4A	SHEET	3 OF 4 SHEETS

Neg No 342042



TYP SECTION
SITE 1 CH 114+85 TO 118+00




BASE LINE DATA					
PI	Bearing	Chainage	Interval	Co-Ordinates	
				North	West
24	N 69°17'03" W	85+96.93	1297.12	43,938.79	22,070.95
25	N 01°47'53" W	98+94.05	864.87	44,397.62	23,284.21
26	N 01°47'53" W	107+58.92	676.60	45,262.06	23,311.35
27	N 01°47'53" W	114+35.52	400.00	45,938.33	23,332.58
28	N 01°47'53" W	118+35.52		46,338.09	23,346.29

SURVEY MONUMENTS			
Mon	Type	Co-Ordinates	
		North	East
17	Nail	44,632.35	23,117.90
18	Nail	44,697.67	22,852.72

NOTES
 • For Legend see Dwg 4843-1-2
 • For General Notes see 4843-1-7

Neg No 342043

 CBA ENGINEERING LTD. CONSULTING ENGINEERS - VANCOUVER - CANADA	RECOMMENDED <small>CHIEF, PROJECTS DIV.</small>	Province of British Columbia Ministry of Environment WATER MANAGEMENT BRANCH CANADA - BRITISH COLUMBIA FRASER RIVER FLOOD CONTROL 1968 AGREEMENT PROJECT NO. 7 - DISTRICT OF MISSION CONTRACT NO. 1 - MISSION DYKES ALIGNMENT PLAN	DESIGNED DLG/EMH DRAWN Wn CHECKED DLG/EMH SCALE AS SHOWN DWG. NO. 4843-1-5A	SURVEYED DATE FILE NO. 0281550-C25-1 DATE MARCH 1990 SHEET 4 OF 4 SHEETS
	APPROVED <small>DIRECTOR</small>	PROJECT NO. 7 - DISTRICT OF MISSION CONTRACT NO. 1 - MISSION DYKES ALIGNMENT PLAN	DATE DATE	DATE

