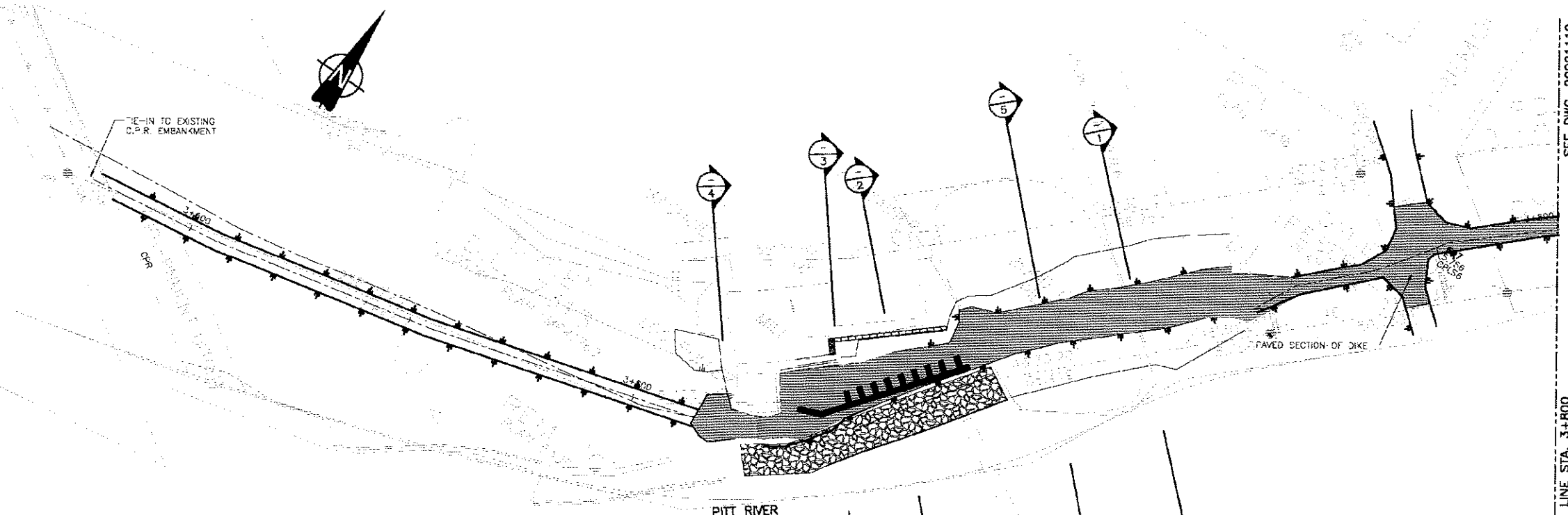


CADD FILE: N:\Bur-Graphica\Projects\2007\1411\07-1411-0098\Drafting\1000\Report_2\07141100098-1000-A_05A-E.dwg

REVISION DATE: 07/09/13 03:11PM By: areddy

SEE DWG. 20021108
MATCH LINE STA. 3+450

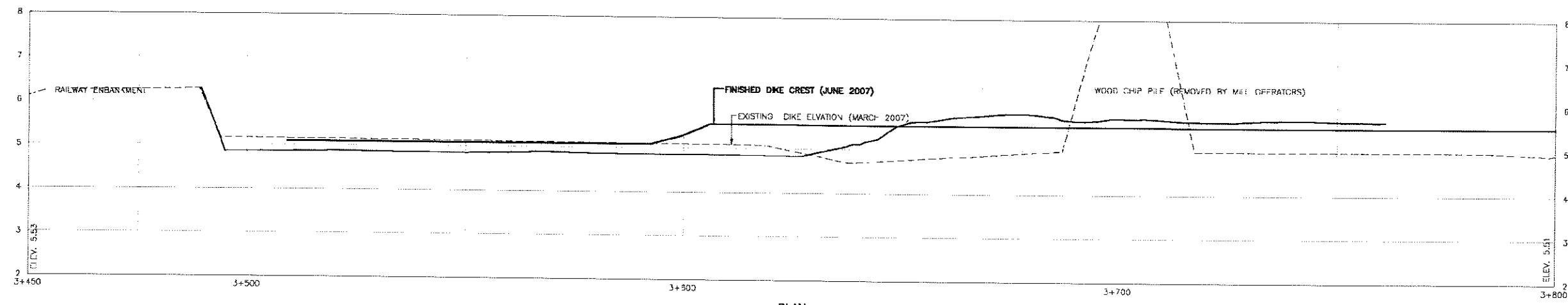
SEE DWG. 20021110
MATCH LINE STA. 3+800



PITT RIVER

PLAN
1:500

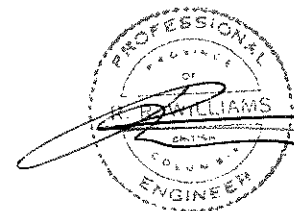
NOTE: "AS-BUILT" SURVEY
 1. DIKE CENTRE LINE PROFILE AT EVERY 100m C/C
 2. DIKE CROSS-SECTIONS AT 500m INTERVALS
 3. IMPROVEMENTS FOR THIS AREA SEE DWG 109A, 109B
 4. LEGAL SURVEY AND M.L.L. FOOTPRINT PROVIDED BY CITY OF PORT COQUITLAM



PLAN
H:1:500 V:1:50

REFERENCES

- 1) Associated Engineering
 Project No. 20072002
 Dwg.No. 20021109d
 Date: June 2007
 Rev.2



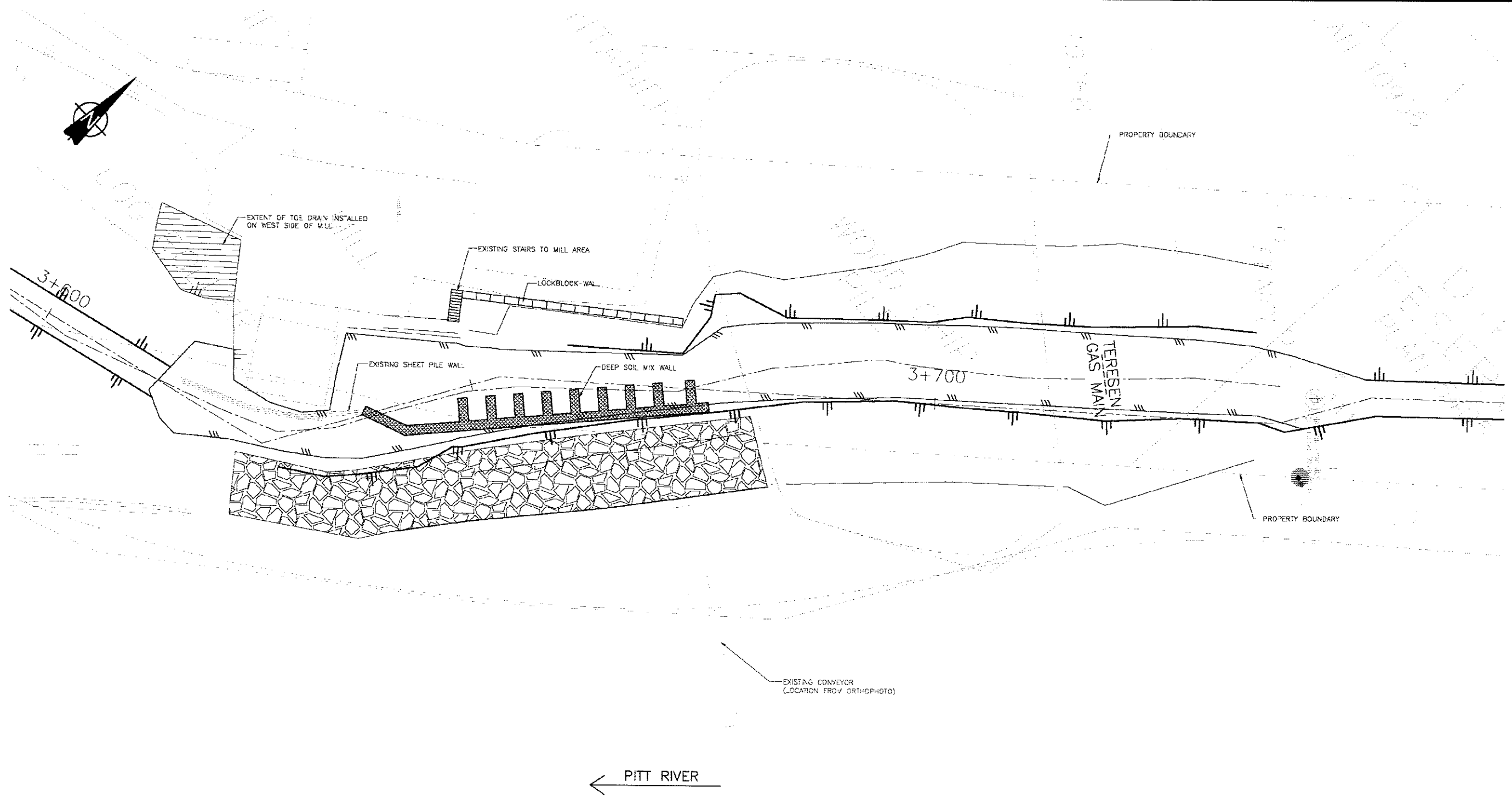
NOT TO SCALE

PROJECT		ASSOCIATED ENGINEERING URGENT MITIGATIVE FLOOD WORKS PITT RIVER, PORT COQUITLAM, B.C.	
TITLE		AS-CONSTRUCTED DRAWINGS	
PROJECT No. 07-1411-0098		FILE No. 07141100098-1000-A_05A-E	
DESIGN	JP	27AUG07	SCALE AS SHOWN
CADD	SRR	27AUG07	REV. -
CHECK			FIGURE 5A
REVIEW			



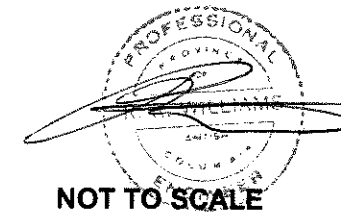
CADD FILE: N:\Bur-Graphics\Projects\2007\1411\07-1411-0098\Drafting\1000\Report_2\07141100098-1000-A_05A-E.dwg

REVISION DATE: 07/09/13 03:11PM By: sreddy



REFERENCES

- 1) Associated Engineering
 Project No. 20072002
 Dwg.No. 20021109d
 Date: June 2007
 Rev.2



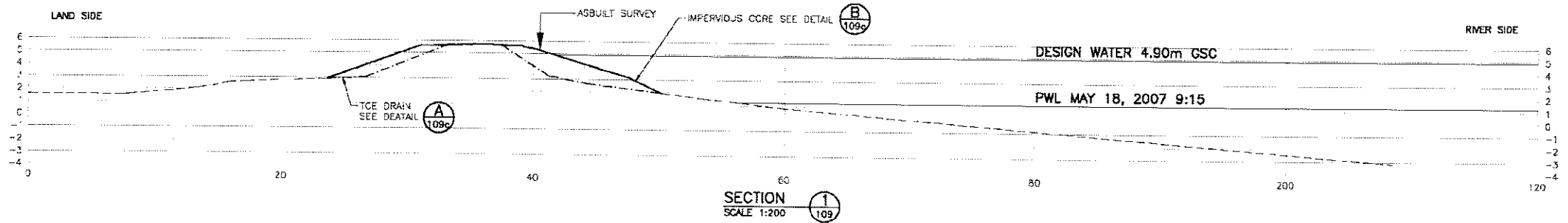
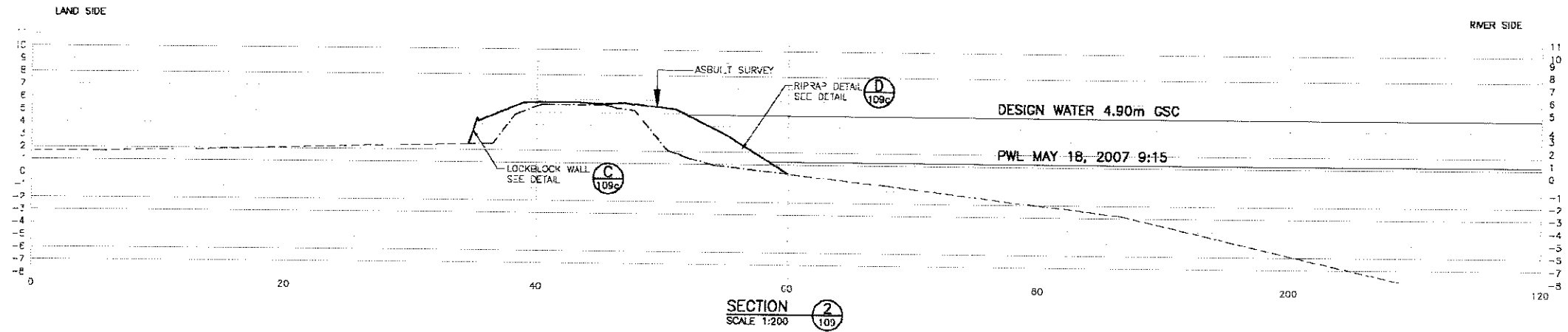
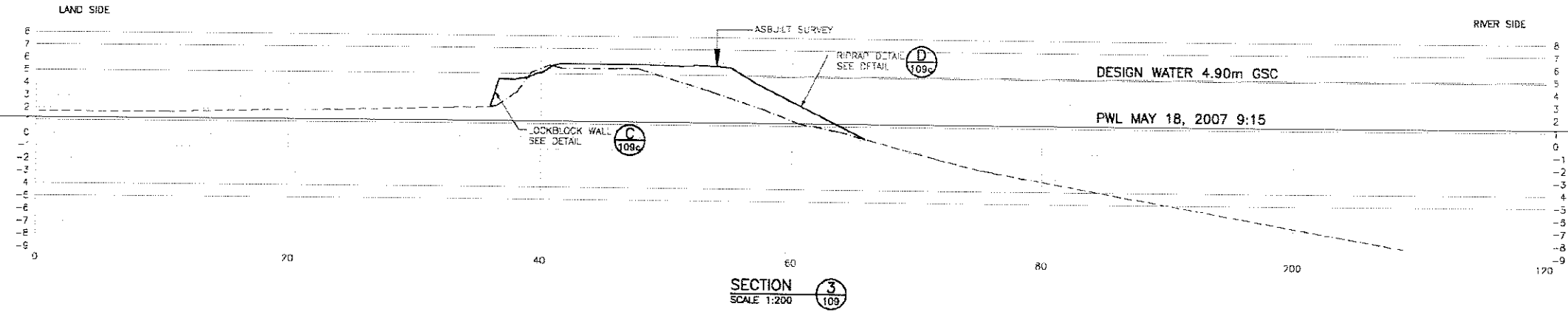
PROJECT		ASSOCIATED ENGINEERING URGENT MITIGATIVE FLOOD WORKS PITT RIVER, PORT COQUITLAM, B.C.			
TITLE		AS-CONSTRUCTED DRAWINGS			
PROJECT No. 07-1411-0098		FILE No. 07141100098-1000-A_05A-E			
DESIGN	JP	27AUG07	SCALE	AS SHOWN	REV. -
CADD	SRR	27AUG07			
CHECK					
REVIEW					



FIGURE 5B

CADD FILE: N:\Bur-Graphics\Projects\2007\1411\07-1411-0098\Drafting\1000\Report_2\07141100098-1000-A_05A-E.dwg

REVISION DATE: 07/09/13 03:11PM By: areddy



LEGEND

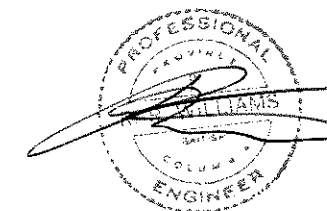
- EXISTING GROUND
- FINISH DIKE SECTION
- LIMIT OF EXCAVATION

NOTE:

---LOCATION OF WOOD CHIP PILES ON LAND AND WATER SIDE ARE NOT SHOWN

REFERENCES

- 1) Associated Engineering
Project No. 20072002
Dwg.No. 20021109a
Date: June 2007
Rev.2

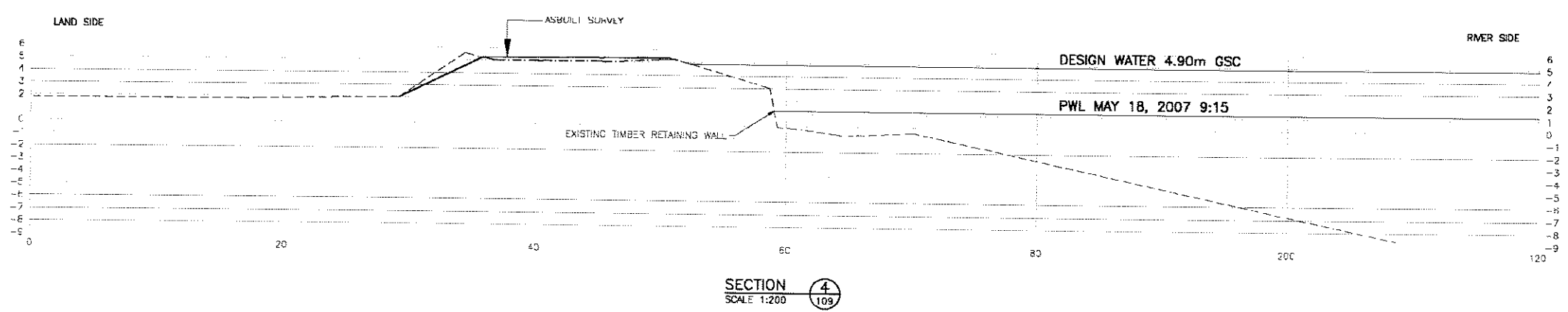
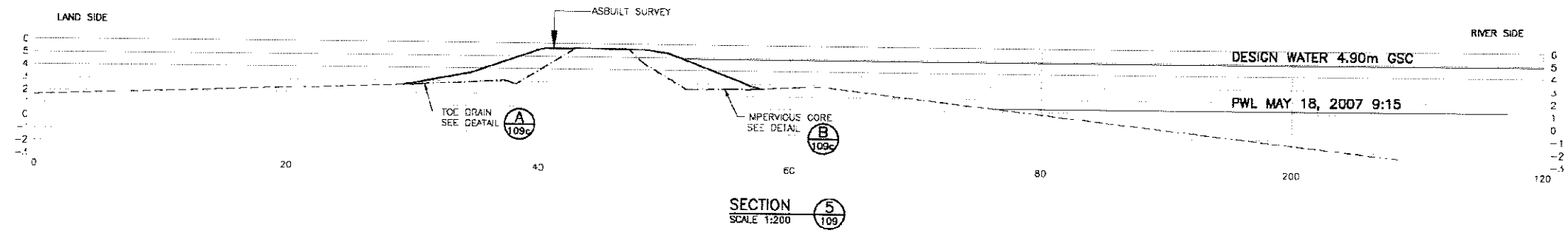


NOT TO SCALE

PROJECT		ASSOCIATED ENGINEERING URGENT MITIGATIVE FLOOD WORKS PITT RIVER, PORT COQUITLAM, B.C.			
TITLE		AS-CONSTRUCTED DRAWINGS			
PROJECT No. 07-1411-0098		FILE No. 07141100098-1000-A_05A-E			
DESIGN	JP	27AUG07	SCALE	AS SHOWN	REV. --
CADD	SRR	27AUG07			
CHECK					
REVIEW					
			FIGURE 5C		

CADD FILE: N:\Bur-Graphica\Projects\2007\1411\07-1411-0098\Drafting\1000\Report_2\07141100098-1000-A_05A-E.dwg

REVISION DATE: 07/09/13 03:11PM By: sreddy



LEGEND

--- EXISTING GROUND

— FINISH DKE SECTION

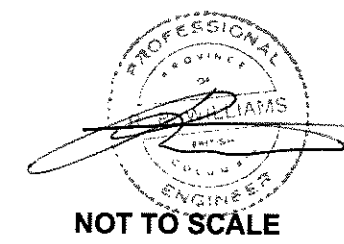
- - - - - LIMIT OF EXCAVATION

NOTE:

- LOCATION OF WOOD CHIP PILLS ON LAND AND WATER SIDE ARE NOT SHOWN

REFERENCES

- 1) Associated Engineering
Project No. 20072002
Dwg.No. 20021109b
Date: June 2007
Rev.2

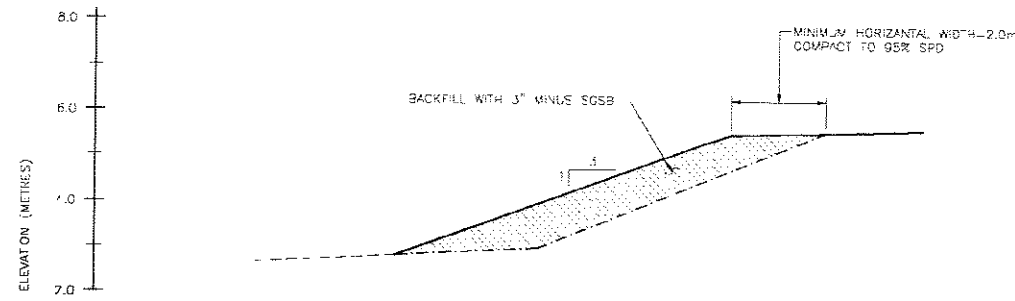


PROJECT		ASSOCIATED ENGINEERING	
		URGENT MITIGATIVE FLOOD WORKS	
		PITT RIVER, PORT COQUITLAM, B.C.	
TITLE		AS-CONSTRUCTED DRAWINGS	
PROJECT No. 07-1411-0098		FILE No. 07141100098-1000-A_05A-E	
DESIGN	JP	27AUG07	SCALE AS SHOWN
CADD	SRR	27AUG07	REV. -
CHECK			FIGURE 5D
REVIEW			



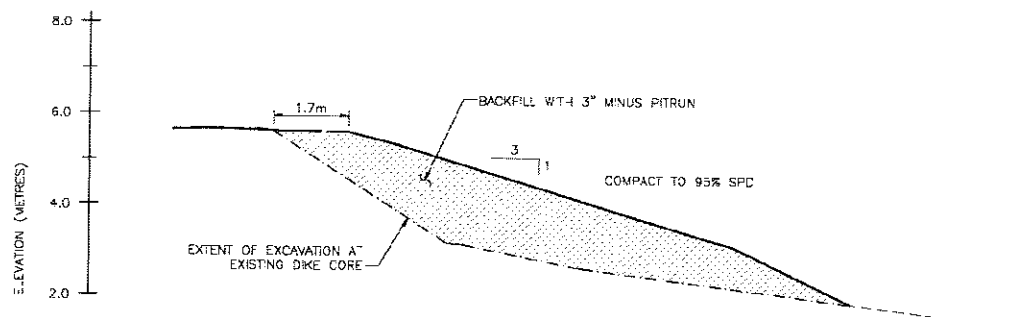
CADD FILE: N:\Bur-Graphics\Projects\2007\1411\07-1411-0098\Drafting\1000\Report_2\07141100098-1000-A_05A-E.dwg

REVISION DATE: 07/09/13 03:11PM By: sreddy



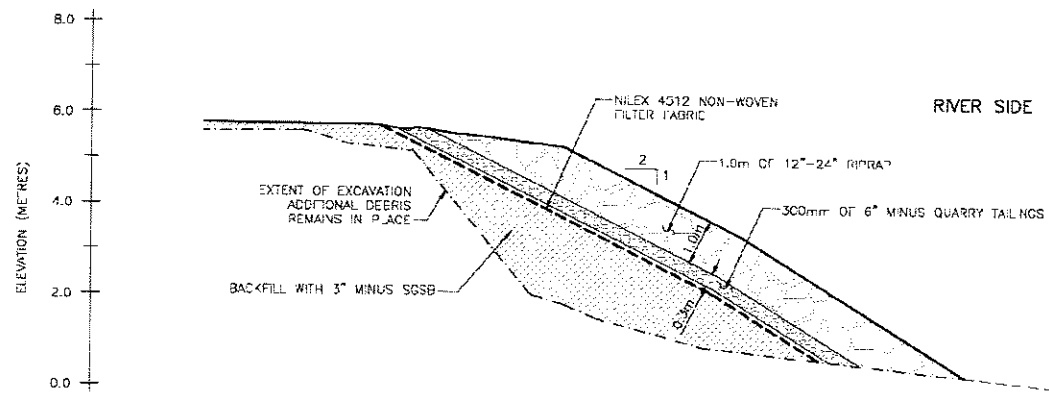
LAND SIDE TOE DRAIN
BASED ON SURVEY SECTION 1

DETAIL A
1:75
1096



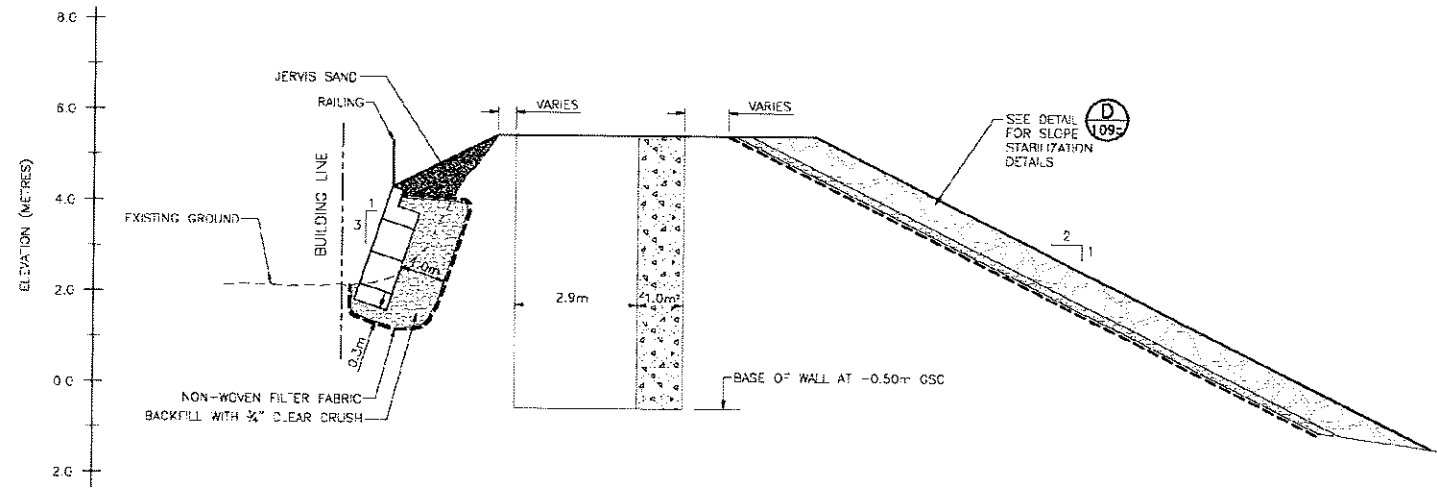
WATER SIDE IMPERVIOUS CORE
BASED ON SURVEY SECTION 1

DETAIL B
1:75
1096



WATER SIDE RIPRAP SLOPE STABILIZATION
BASED ON SECTION 2

DETAIL D
1:75
1096



LOCKBLOCK WALL

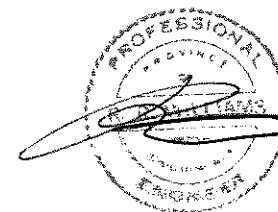
DETAIL B
1:75
1096

NOTES:

1. 3/4 MINUS SCSB USED FOR TOE DRAIN MATERIAL. SEE GOLDER'S REPORT FOR MATERIAL GRADATION
2. 3/4 MINUS PITRUN USED FOR IMPERVIOUS CORE. SEE GOLDER'S REPORT FOR MATERIAL GRADATION
3. ALL ELEVATIONS ARE GEODETIC

LEGEND

- EXISTING GROUND
- FINISH DWF SECTION
- LIMIT OF EXCAVATION



NOT TO SCALE

REFERENCES

- 1) Associated Engineering
Project No. 20072002
Dwg.No. 20021109d
Date: June 2007
Rev.2

PROJECT		ASSOCIATED ENGINEERING URGENT MITIGATIVE FLOOD WORKS PITT RIVER, PORT COQUITLAM, B.C.	
TITLE		AS-CONSTRUCTED DRAWINGS	
PROJECT No.	07-1411-0098	FILE No.	07141100098-1000-A_05A-E
DESIGN	JP 27AUG07	SCALE	AS SHOWN
CADD	SRR 27AUG07	REV.	-
CHECK		FIGURE 5E	
REVIEW			





CROSS SECTION THROUGH DIKE AT FLOODBOX

TO PUMP STATION #2

PUMP STATION #1

EXISTING WOOD RETAINING WALL

NEW RETAINING WALL

PUMP STATION #3

TOE DRAIN AND FILTER FABRIC INSTALLED

STAIRS

DIKE CREST

750mm# STEEL FLOODBOX

CONCRETE HEADWALL

FENCE

FENCE

DIKE CREST

PITT RIVER

FLAPGATES

EXISTING FLAPGATE

PUMP STATION DETAILS
 #1 - DATE OF CONSTRUCTION UNKNOWN
 #2 - CONSTRUCTED AS PART OF FRFCP IN 1970'S
 #3 - CONSTRUCTED IN 2002

NOTES:
 1) FLOODBOX ON PUMP STATION #1 MAY NOT HAVE SEEPAGE COLLARS. RECORD DRAWINGS ARE NOT AVAILABLE.
 2) SIGNIFICANT CORROSION NOTED ON FLOODBOX #1 ON LAND SIDE OF DIKE.
 3) TOE DRAIN AND FILTER FABRIC INSTALLED IN ORDER TO REDUCE SEEPAGE GRADIENT AT LANDSIDE FACE OF THE DIKE DUE TO POSSIBLE LACK OF SEEPAGE COLLARS

John A. Hull
 Spt 07
 PROFESSIONAL ENGINEER
 PROVINCE OF BRITISH COLUMBIA
 JOHN A. HULL
 BRITISH COLUMBIA ENGINEER

SPECIAL NOTE

Temporary works as constructed in May at pump station will be investigated this summer and the temporary retaining wall under the pump station access ramp will be checked and removed or fixed by December 2007.

0 0.5 1 1.5 2 2.5
 Scale in Metres

REFERENCES

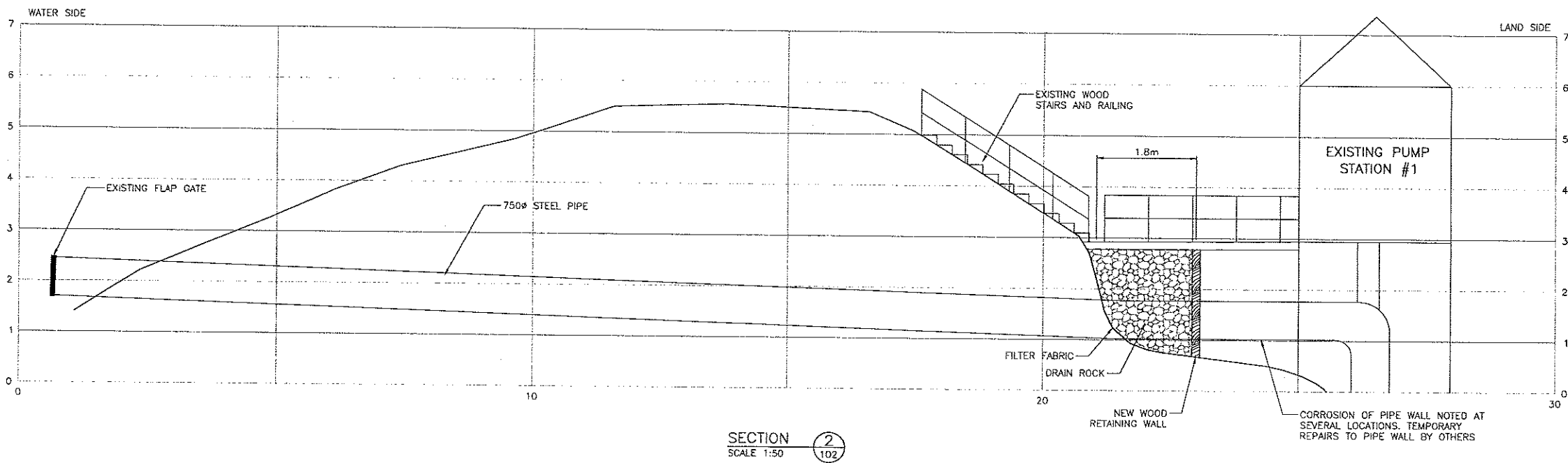
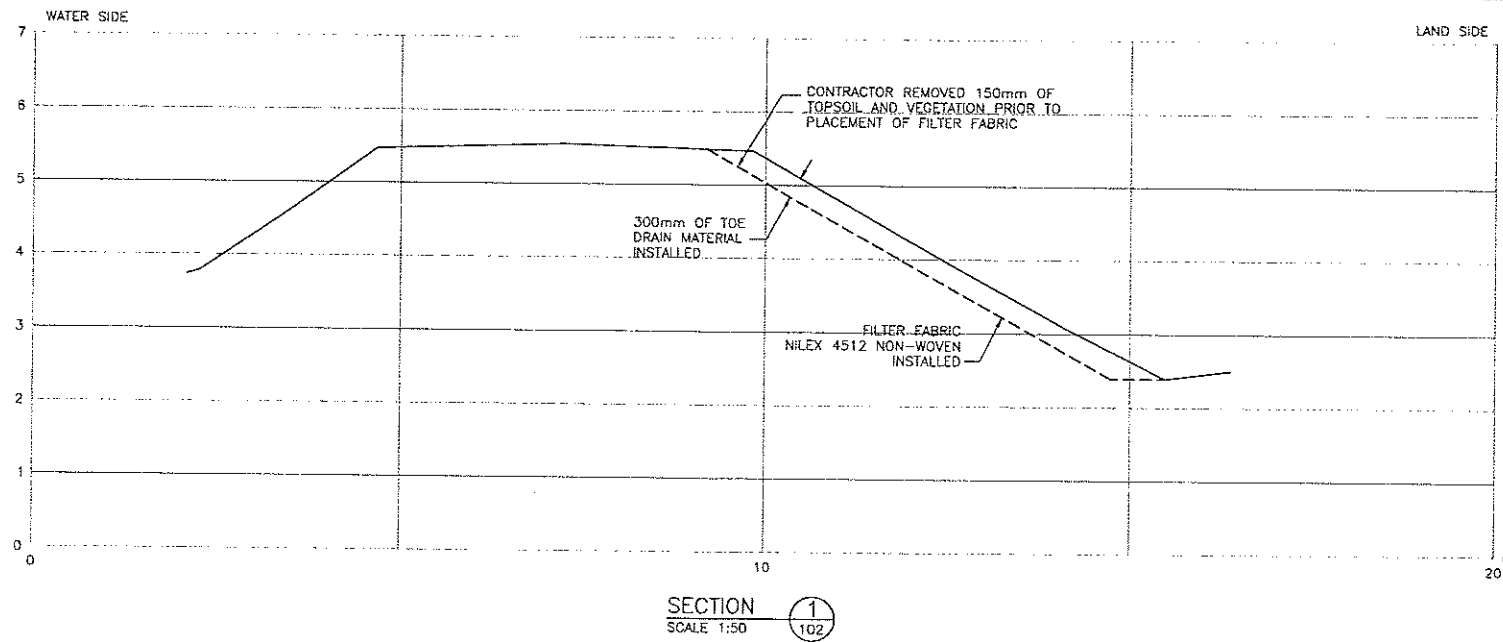
- Associated Engineering
 Received July 12, 2007
 City of Port Coquitlam - Plan
 Dwg.No. 20021102a
- Survey conducted by Associated Engineering

PROJECT		ASSOCIATED ENGINEERING	
		URGENT MITIGATIVE FLOOD WORKS	
		PITT RIVER, PORT COQUITLAM, B.C.	
TITLE		HARBOUR STREET PUMP STATION	
		AS-CONSTRUCTED DRAWINGS	
PROJECT No. 07-1411-0098		FILE No. 1000	
DESIGN	JP	13JUL07	SCALE AS SHOWN REV. -
CADD	SRR	13JUL07	
CHECK			
REVIEW			

FIGURE 5A

Golder Associates

DRAWN DATE: 07/09/07 10:00am DR: wedy
 CADD FILE: H:\baron\projects\0007\1411\07-1411-0098\Drawings\0007\0714110098-1000-5A.dwg



- NOTES:
- 1) TOE DRAIN MATERIAL IS 3" MINUS SGSB FROM PIPELINE QUARRY.
 - 2) CORRODED PIPE WALL RESULTED IN SIGNIFICANT LEAKAGE

SPECIAL NOTE

Temporary works as constructed in May at pump station will be investigated this summer and the temporary retaining wall under the pump station access ramp will be checked and removed or fixed by December 2007.

[Handwritten signature]
 28 Sept 07

- REFERENCES**
- 1) Associated Engineering
 Received July 12, 2007
 City of Port Coquitlam - Plan
 Dwg. No. 20021102a
 - 2) Survey conducted by Associated Engineering

PROJECT		ASSOCIATED ENGINEERING		
		URGENT MITIGATIVE FLOOD WORKS		
		PITT RIVER, PORT COQUITLAM, B.C.		
TITLE		HARBOUR STREET PUMP STATION		
		AS-CONSTRUCTED DRAWINGS		
	PROJECT No.	07-1411-0098	FILE No.	1000
	DESIGN	JP	13JUL07	SCALE AS SHOWN
	CADD	SRR	13JUL07	REV. -
	CHECK			
	REVIEW	<i>[Signature]</i>	<i>[Signature]</i>	

FIGURE 5B

REVISION DATE: 07/20/07 TO: 08/01/07 BY: *[Signature]*
 CADD FILE: A:\Users\jgibson\Projects\2007\1411\07-1411-0098\Drawings\1000\07-1411-0098-1000-ASB.dwg

City of Port Coquitlam

Freshet 2007 - Urgent Mitigative Flood Works MOE: 07-02-01A

AE Project No. 20072002
Record Drawings

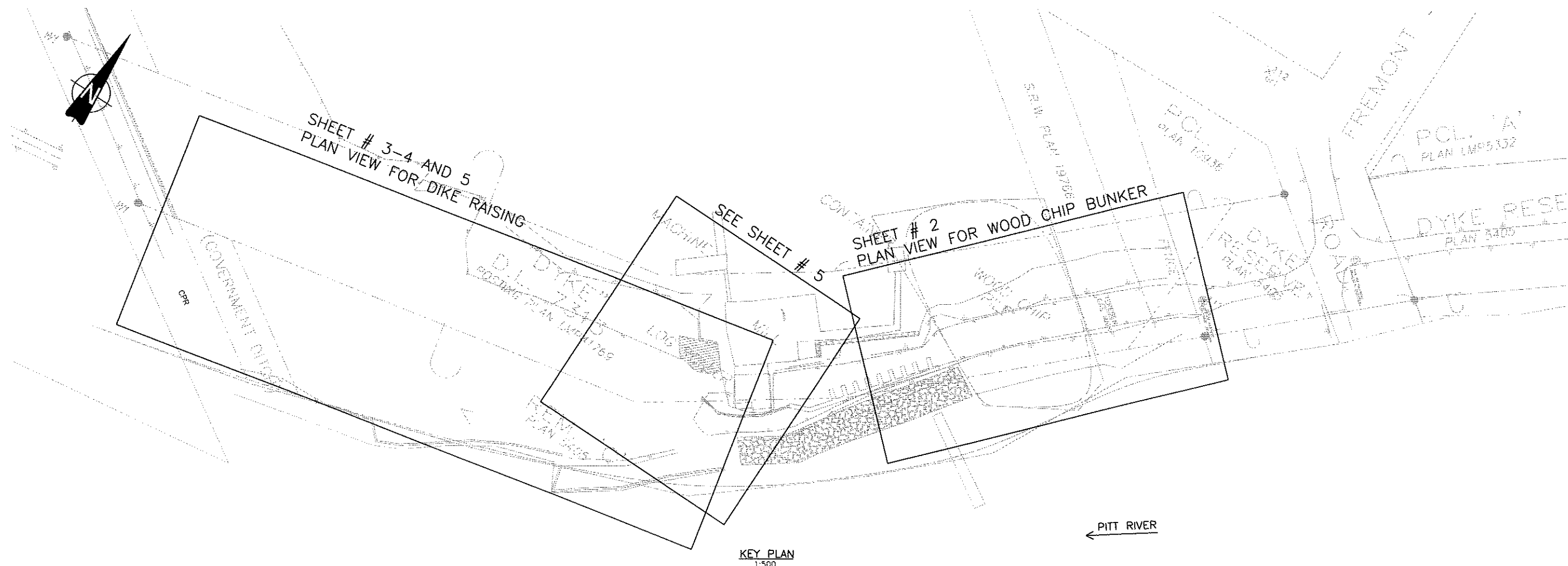
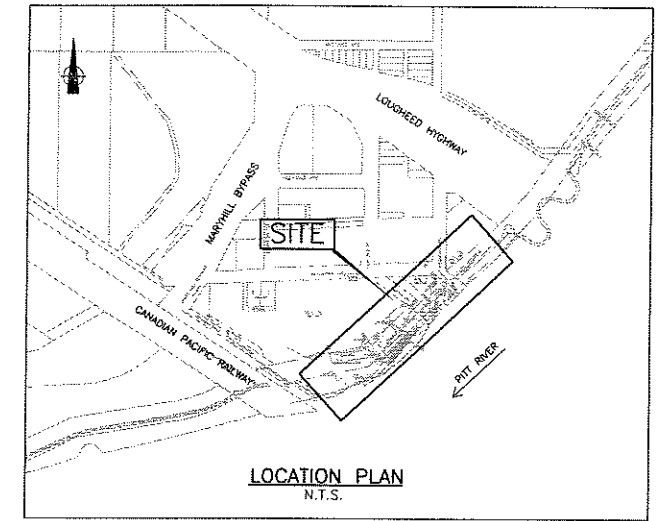
DRAWING LIST	
	GENERAL
2002-2-100	COVER AND DRAWING LIST
	CIVIL
2002-2-101	LOCATION PLAN - KEY PLAN
2002-2-102	WOOD CHIP BUNKER PLAN AND TYPICAL SECTION
2002-2-103	DIKE RAISING PLAN
2002-2-104	DIKE RAISING SECTIONS AND PROFILE
2002-2-105	DETAILS



**Associated
Engineering**

*GLOBAL PERSPECTIVE.
LOCAL FOCUS.*

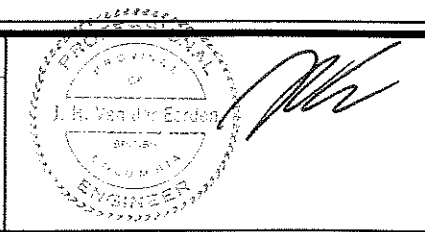
This Drawing is For The Use Of The Client And Project Indicated
No Representations Of Any Kind Are Made To Other Parties



Date: 08/27/07
Plot Scale: 1:1
Path: C:\Users\jordan\Documents\20072002\02_POCO_DIKE_RAISING\07A_Civil\Source of Mill Dike Raising\07A_Civil\Source of Mill Dike Raising\07A_Civil.dwg
User: jordan

NO.	DATE	ENC.	BY	SUBJECT
1	SEPT. 2007	A.W.	G.G.	RECORD DRAWINGS
REVISIONS				

VERIFY SCALES
BAR IS 20mm ON ORIGINAL DRAWING
0 — 20mm
IF NOT 20mm ON THIS SHEET, ADJUST SCALES ACCORDINGLY

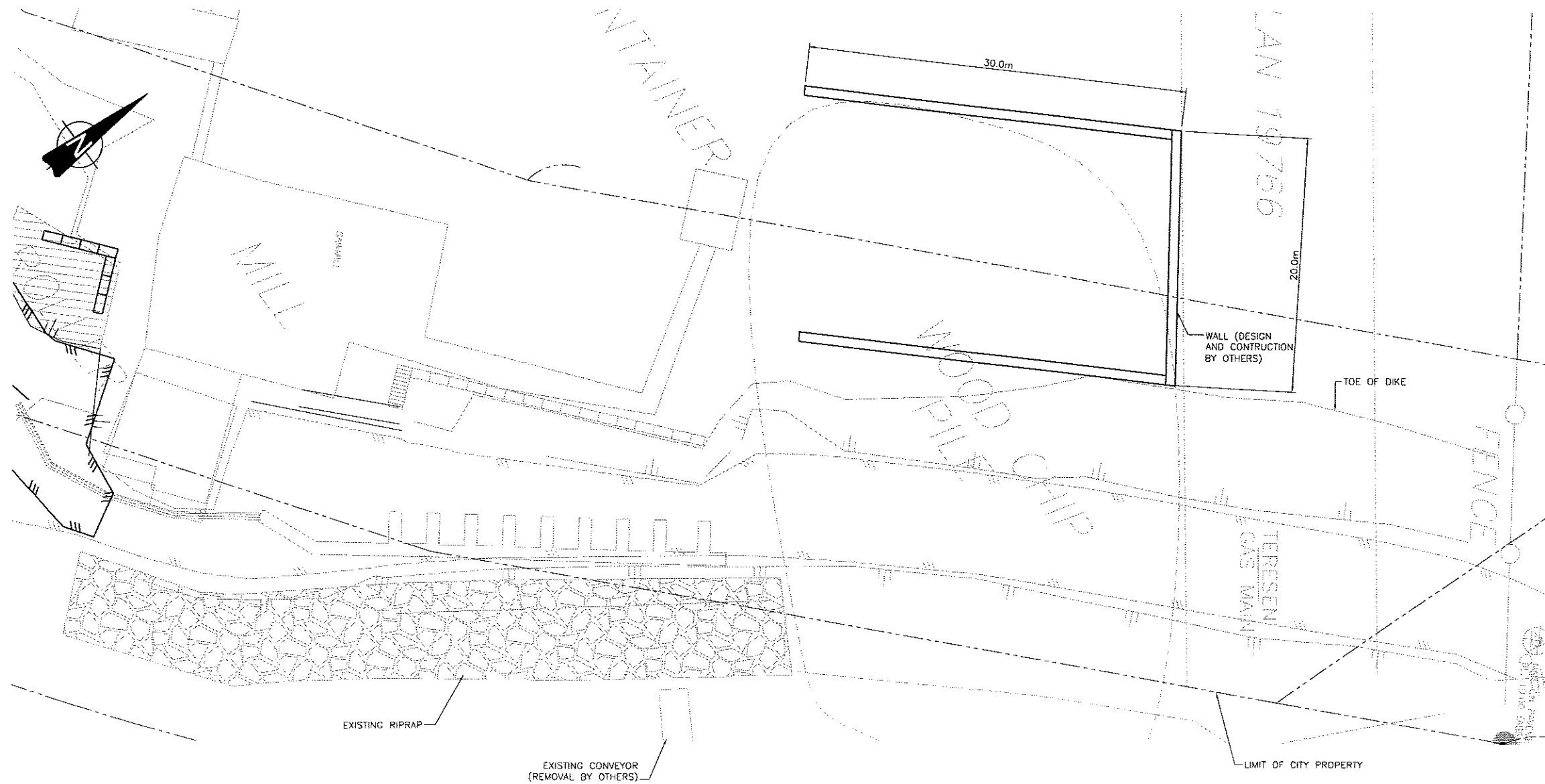


PROJECT No.	20072002
SCALE	AS NOTED
DRAWN	G.Q. AUG. 2007
DESIGNED	A.W. AUG. 2007
CHECKED	
APPROVED	
DATE	INITIAL

CITY OF PORT COQUITLAM
LOCATION PLAN - KEY PLAN

FRESHET 2007-URGENT MITIGATIVE FLOOD WORKS MOE: 07-02-01A		
DRAWING NUMBER	REV. NO.	SHEET
20022101	1	1

This Drawing is For The Use Of The Client And Project Indicated
No Representations Of Any Kind Are Made To Other Parties



NOTES:

1. SAWMILL OPERATOR RESPONSIBLE FOR OBTAINING NECESSARY APPROVALS FOR TERESEN GAS
2. PROPOSED WALL LOCATIONS ARE APPROXIMATE. DESIGN AND CONSTRUCTION BY OTHERS
3. THIS DRAWING PROVIDED FOR INFORMATION ONLY. ACTUAL BUNKER MAY DIFFER FROM CONCEPT SHOWN ON THIS DRAWING

WOOD CHIP BUNKER PLAN
1:200

Date: 18.12.07
Proj. Name: 2007-02-01A
Drawing Title: WOOD CHIP BUNKER PLAN
Drawing No: 20022102
Drawing Scale: 1:200
Drawing Status: ISSUED FOR CONSTRUCTION

NO.	DATE	ENG.	BY	SUBJECT
1	SEPT. 2007	A.W.	C.Q.	INFORMATION ONLY
REVISIONS				

VERIFY SCALES
BAR IS 20mm ON ORIGINAL DRAWING
0' — 20mm
IF NOT 20mm ON THIS SHEET, ADJUST SCALES ACCORDINGLY

PRELIMINARY
NOT FOR
CONSTRUCTION

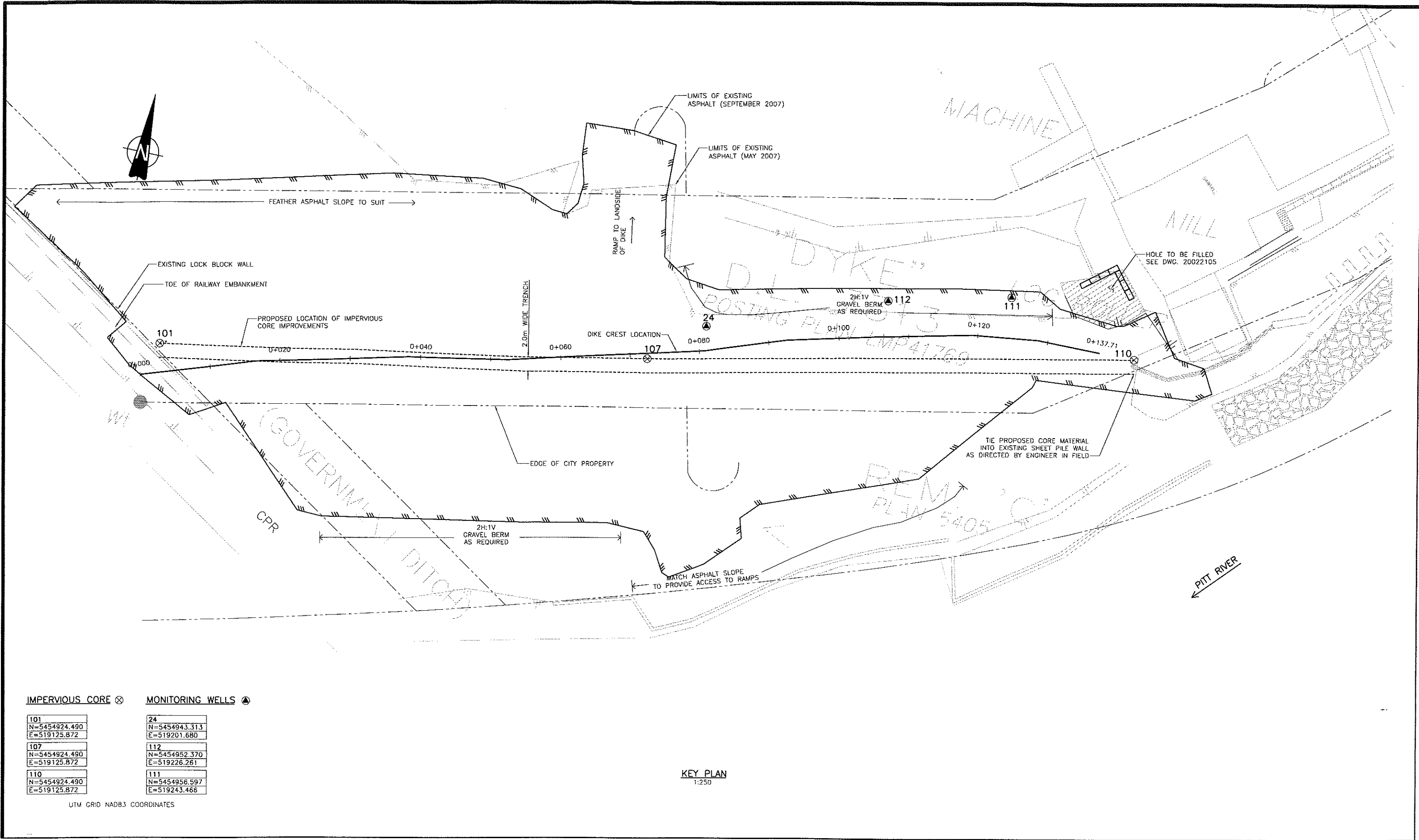


PROJECT No.	20072002		
SCALE	AS NOTED		
DRAWN	C.Q.		AUG. 2007
DESIGNED	A.W.		AUG. 2007
CHECKED			
APPROVED			
DATE		INITIAL	

CITY OF PORT COQUITLAM	
WOOD CHIP BUNKER PLAN AND TYPICAL SECTION	

FRESHET 2007-URGENT MITIGATIVE FLOOD WORKS MOE: 07-02-01A		
DRAWING NUMBER	REV. NO.	SHEET
20022102	1	1

This Drawing is For The Use Of The Client And Project Indicated
No Representations Of Any Kind Are Made To Other Parties



IMPERVIOUS CORE ⊗ MONITORING WELLS ▲

101	N=5454924.490 E=519125.872
107	N=5454924.490 E=519125.872
110	N=5454924.490 E=519125.872

24	N=5454943.313 E=519201.680
112	N=5454952.370 E=519226.261
111	N=5454956.597 E=519243.466

UTM GRID NAD83 COORDINATES

KEY PLAN
1:250

Time: 0:58
Plot Size: 11x17 (Paper Size)
AutoCAD File: \\C:\Users\james\Documents\Projects\2007\07-02-01A\2007-02-01A.dwg
Date: 2007-09-19 10:04:00
User: james

NO.	DATE	ENG.	BY	SUBJECT
1	SEPT. 2007	A.W.	G.D.	RECORD DRAWINGS
REVISIONS				

VERIFY SCALES
BAR IS 20mm ON ORIGINAL DRAWING
0 20mm

IF NOT 20mm ON THIS SHEET, ADJUST SCALES ACCORDINGLY

[Signature]

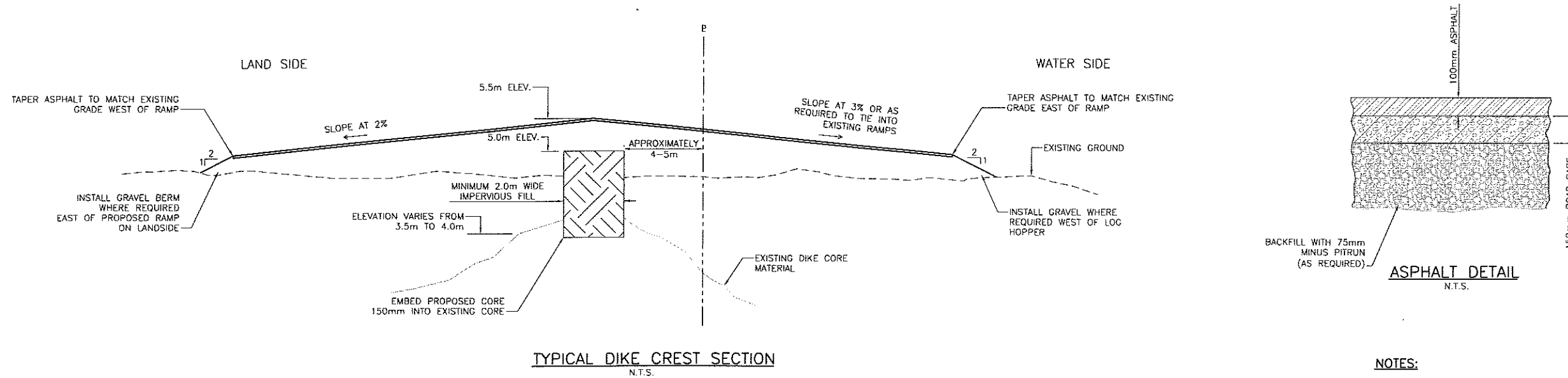
Associated Engineering

PROJECT No.	20072002
SCALE	AS NOTED
DRAWN	C.Q. AUG. 2007
DESIGNED	A.W. AUG. 2007
CHECKED	
APPROVED	
DATE	INITIAL

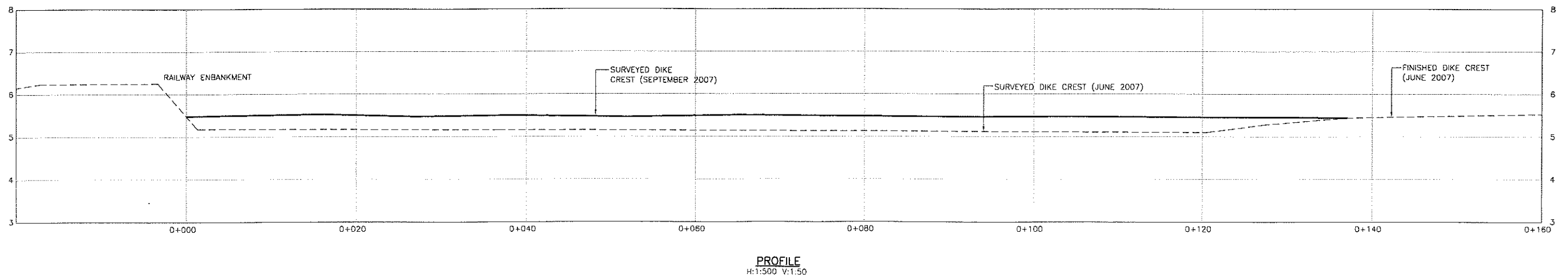
CITY OF PORT COQUITLAM	
DIKE RAISING PLAN	

FRESHET 2007-URGENT MITIGATIVE FLOOD WORKS MOE: 07-02-01A		
DRAWING NUMBER	REV. NO.	SHEET
20022103	1	

This Drawing is For The Use Of The Client And Project Indicated
No Representations Of Any Kind Are Made To Other Parties



- NOTES:**
- ROAD BASE TO MEET MMCD (GOLD BOOK) SPECIFICATIONS FOR GRANULAR BASE
 - ASPHALT PAVING TO MEET MMCD (GOLD BOOK) SPECIFICATIONS FOR SECTIONS 02S12
 - IMPERVIOUS FILL TO CONTAIN MINIMUM 20% PASSING THE #200 SIEVE COMPACT TO 95% MPD
 - HORIZONTAL LOCATION OF IMPROVED IMPERVIOUS CORE VARIES WITH RESPECT TO DIKE CREST LOCATION. SEE DWG 20022103 FOR PLAN VIEW



Time: 16:20
Date: 08/27/07
User: gq
AutoCAD File: P:\2007\2002\00_POCO_DICES\WORKING_DWGS\100_Civil\South of Mill Dike Raising\07_20022104.DWG (G0)

NO.	DATE	ENG.	BY	SUBJECT
1	SEPT. 2007	A.W.	G.Q.	RECORD DRAWINGS
REVISIONS				

VERIFY SCALES

BAR IS 20mm ON ORIGINAL DRAWING

0 20mm

IF NOT 20mm ON THIS SHEET, ADJUST SCALES ACCORDINGLY

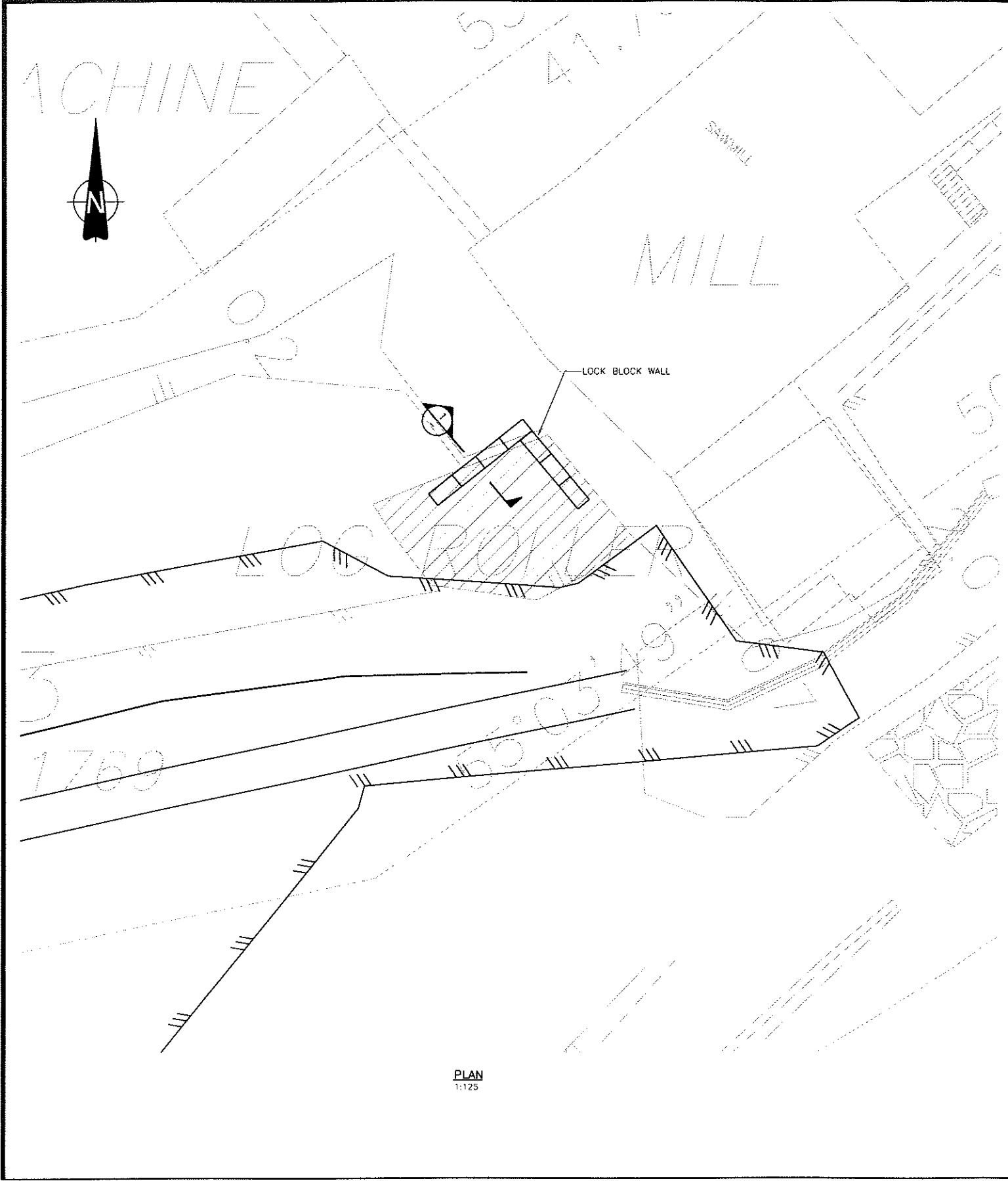


PROJECT No.	20072002
SCALE	AS NOTED
DRAWN	G.Q. AUG. 2007
DESIGNED	A.W. AUG. 2007
CHECKED	
APPROVED	
DATE	INITIAL

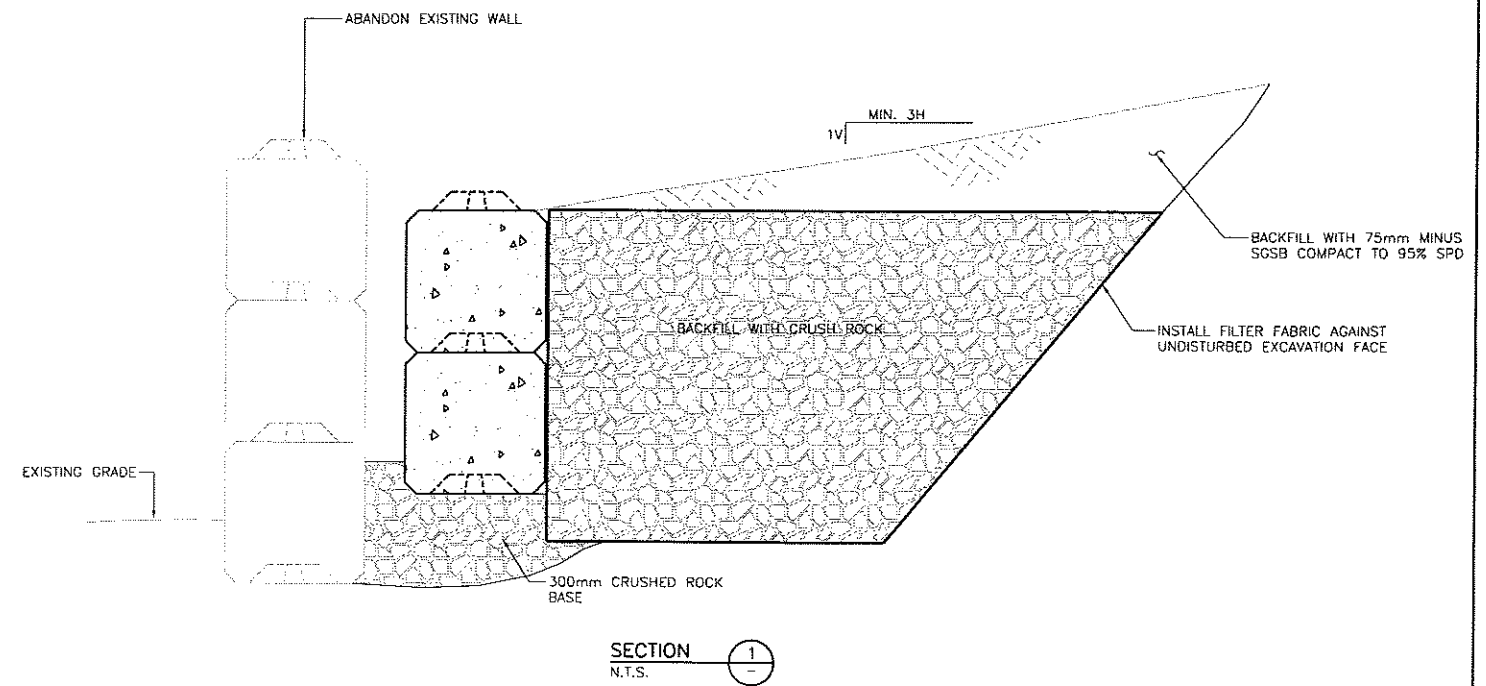
CITY OF PORT COQUITLAM	
DIKE RAISING SECTIONS AND PROFILE	

FRESHET 2007-URGENT MITIGATIVE FLOOD WORKS MOE: 07-02-01A		
DRAWING NUMBER	REV. NO.	SHEET
20022104	1	1

This Drawing Is For The Use Of The Client And Project Indicated
No Representations Of Any Kind Are Made To Other Parties



PLAN
1:125

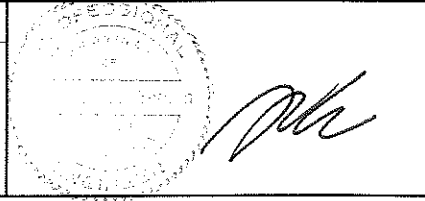


- NOTES:**
1. PREPARED EXCAVATION TO BE INSPECTED AND APPROVED BY ENGINEER PRIOR TO CONSTRUCTION
 2. 75mm MINUS SGSB TO CONTAIN A MAXIMUM OF 5% FINES PASSING THE #200 SIEVE
 3. CRUSH ROCK TO BE 19" MINUS CLEAR CRUSH COMPACTED TO 95% SPD

Time: 18:20
Date: 2007/07/17
User: Sisco
AutoCAD File: P:\20072002\F000_P000_000001.dwg
User: WILCOB2R104_MILCOB2R103

NO.	DATE	ENG.	BY	SUBJECT
1	SEPT. 2007	A.W.	G.Q.	RECORD DRAWINGS
REVISIONS				

VERIFY SCALES
BAR IS 20mm ON ORIGINAL DRAWING
0 20mm
IF NOT 20mm ON THIS SHEET, ADJUST SCALES ACCORDINGLY



PROJECT No.	20072002
SCALE	AS NOTED
DRAWN	G.Q. AUG. 2007
DESIGNED	A.W. AUG. 2007
CHECKED	
APPROVED	
DATE	INITIAL

CITY OF PORT COQUITLAM
DETAILS

FRESHET 2007-URGENT MITIGATIVE FLOOD WORKS MOE: 07-02-01A		
DRAWING NUMBER	REV. NO.	SHEET
20022105	1	