

Whistler - North

whistler_n_37

Local Diking Authority
Resort Municipality of Whistler

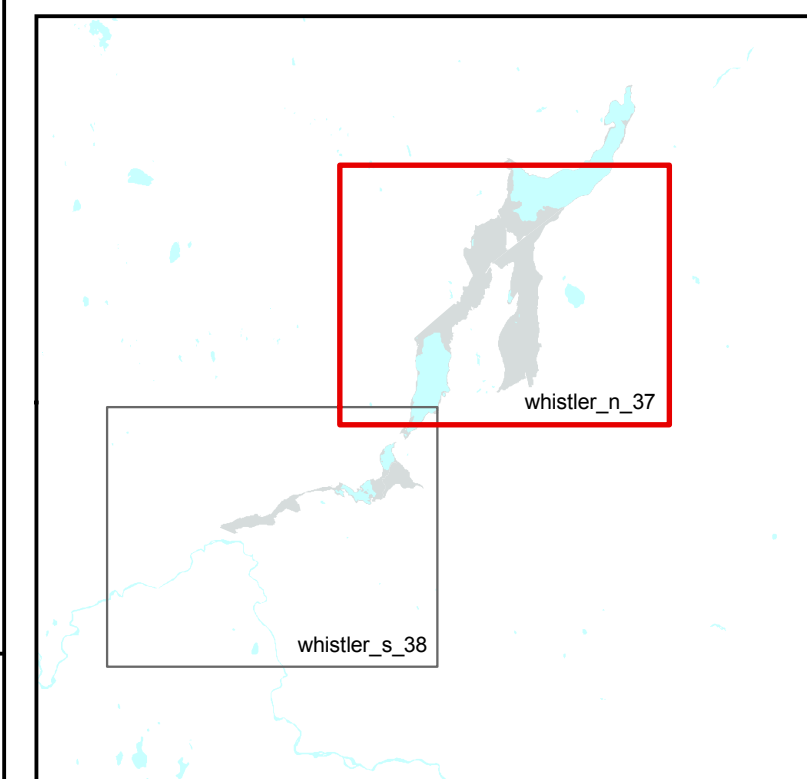
Legend

- Pumpstation / Floodbox
- Pumpstation
- Floodbox
- Open Culvert
- Staff Gauge
- Dike Crest Gauge
- Water Survey Canada (WSC) Real Time Gauge
- Relief Well
- Low Dike
- Special Concern
- Metric Stationing 0+000
- Imperial Stationing 0+00
- Flood Profile Line
- Riprap
- Local Authority's Standard Dike §
- Local Authority's Non-Standard Dike §§
- Other Flood Control Works
- Fish and Wildlife Water Related Structure
- Dikes Outside Local Area (See Note 1)
- Floodplain
- Municipal Boundary
- Indian Reserves
- Provincial Park
- Regional District Park
- Water Pipeline
- Sewer Pipeline
- Gas Pipeline
- Energy Pipeline
- Oil
- Electrical transmission line
- Pipeline
- Railway

Note 1: Dikes are shown for reference purposes and are outside local diking authority area.

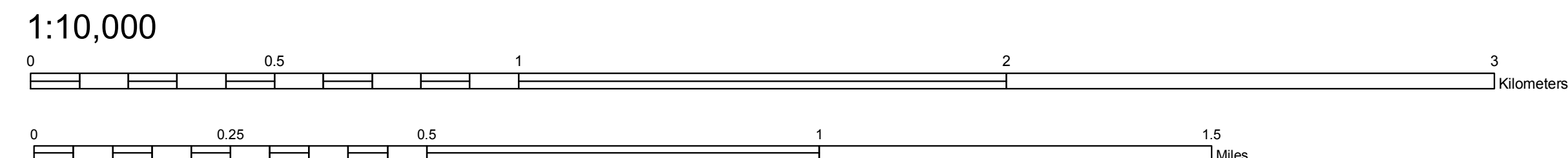
Notes Specific to Local Diking Authorities

Index Map



Maps produced for Ministry of Environment,
Lower Mainland Region.
Printed from Digital Files by
the Integrated Land Management Bureau
Map Projection: Albers, NAD83
Grid Projection: UTM Zone 10N, NAD 83
Revised Date: April 23, 2007
File: whistler_n_37

WHISTLER - NORTH



IMPORTANT NOTICE & DISCLAIMER
The floodplain boundaries and related flood protection infrastructure shown are provided to support flood emergency preparedness, planning and response, broad-based floodplain management, planning and reviews, and other related activities. It is NOT intended to replace detailed floodplain maps designated under the 1987 Canada/BC Floodplain Mapping Agreement.
FLOODING MAY OCCUR OUTSIDE OF THE FLOODPLAIN AREAS SHOWN.
The data was compiled from various sources; it is not warranted as to its accuracy or sufficiency by the Ministry of Environment, and is not intended for legal purposes.

§ Standard dike - a flood protection structure that meets, or has met, provincial dike standards that are regulated by the Inspector of Dikes under the Dike Maintenance Act. Due to morphological, hydrological, and other changes in or about river systems, such a dike shown on the map may not continue to meet current standards.
IMPORTANT: To verify a standard dike's current status, the Inspector of Dikes office should be contacted.
§§ Non-standard dike - a flood protection structure that has a lower level of protection than that provided by a standard dike. Flood protection works that conform to this classification often protect rural agricultural lands and are sometimes referred to as agricultural dikes.

Whistler North

whistler_n_37