

LEGEND

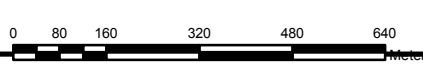
- Point of Diversion Licence
- ⊕ Groundwater Wells
- ▼ Sediment and/or Surface Water Sample Location
- Roads
- ▭ Floodplains
- ▭ Cadastral Boundaries

NOTES

1. Original in colour.
2. Numerical scale reflects full-size print. Print scaling will distort this scale, however scale bar will remain accurate.
3. Intended for illustration purposes, accuracy has not been verified for construction or navigation purposes.

REFERENCES

1. BCGOV ILMB Crown Registry and Geographic Base Branch (CRGB) (data accessed through www.GeoBC.gov.bc.ca)
2. GPS Data Collected using an eTrex. Accuracy expected to be approximately +/- 3.5m



CLIENT NAME: Executive Flight Centre
PROJECT LOCATION: Slocan River Near Winlaw, BC

Sample Locations and Groundwater Well/ Point of Diversion Tags

| | | | |
|-----------|------------------|--------------------|--------|
| BY: DMB | DATE: 2013/08/18 | REF No: 614668-000 | REV: 0 |
| CHK'D: RW | SCALE: 1:15,000 | | |

MXD Path: P:\LOB\EIAM\BC\Current\Projects\Executive Flight Centre\614668\0 GIS\Geomatics\GIS\Map Series\Maps used for Planning\614668-008_SlocanRiver_SamplePlan.mxd