



**SNC-LAVALIN**  
**Environment**

Client :  
Shell Canada Products

**Borehole No. : 06-17**

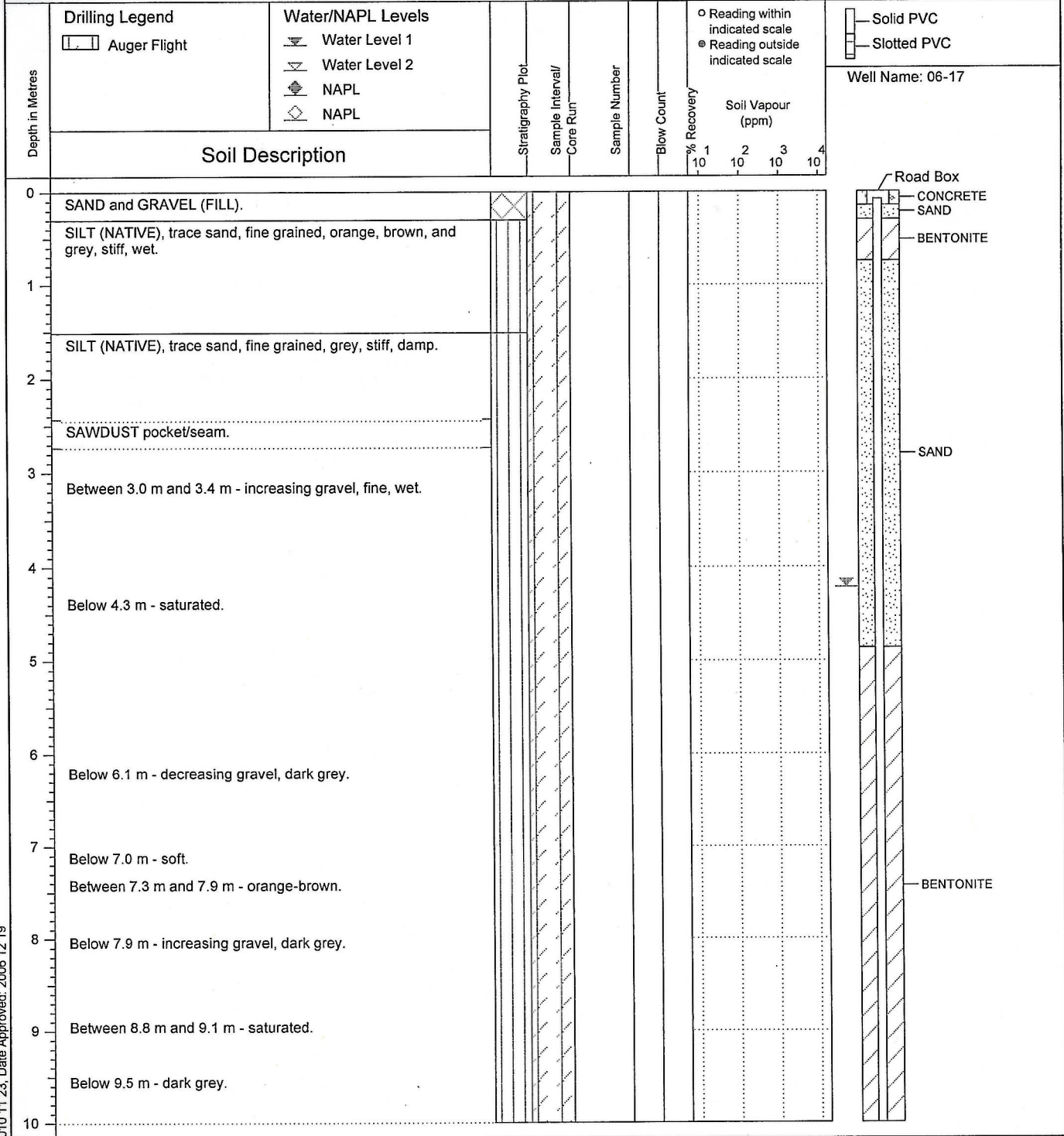
Location :  
4508 Gertrude Street, Port Alberni, BC

(Page 1 of 2)

Drilling Contractor: Drillwell Enterprises Ltd.  
Drilling Method : Solid Stem Auger  
Borehole Dia. (m) : 0.15  
Pipe/Slotted Pipe Dia. (m): 0.05, 0.05

Date Monitored : 2008 07 30  
Ground Surf Elev. (m) : 5.65  
Top of Casing Elev. (m) : 5.57

Project Number :130446  
Borehole Logged By :GDH  
Date Drilled :2006 12 07  
Log Typed By :MAL



...Continued

Notes:

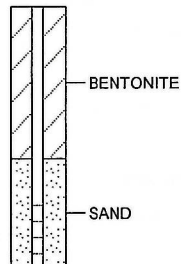


Drilling Contractor: Drillwell Enterprises Ltd.  
Drilling Method : Solid Stem Auger  
Borehole Dia. (m) : 0.15  
Pipe/Slotted Pipe Dia. (m): 0.05, 0.05

Date Monitored : 2008 07 30  
Ground Surf Elev. (m) : 5.65  
Top of Casing Elev. (m) : 5.57

Project Number :130446  
Borehole Logged By :GDH  
Date Drilled :2006 12 07  
Log Typed By :MAL

Depth in Metres	Drilling Legend	Water/NAPL Levels	Stratigraphy Plot	Sample Interval/ Core Run	Sample Number	Blow Count	% Recovery	Soil Vapour (ppm)	Well Name: 06-17
	Auger Flight	Water Level 1 Water Level 2 NAPL NAPL							
Soil Description									
10									
11									
12									
	SILTY SAND, fine grained sand, dark grey, loose, wet.								
	End of borehole at 12.2 m.								
13									
14									
15									
16									
17									
18									
19									
20									



**Notes:**