

COREX ENVIRONMENTAL LTD.

DRILLHOLE NO. BH6/MW6

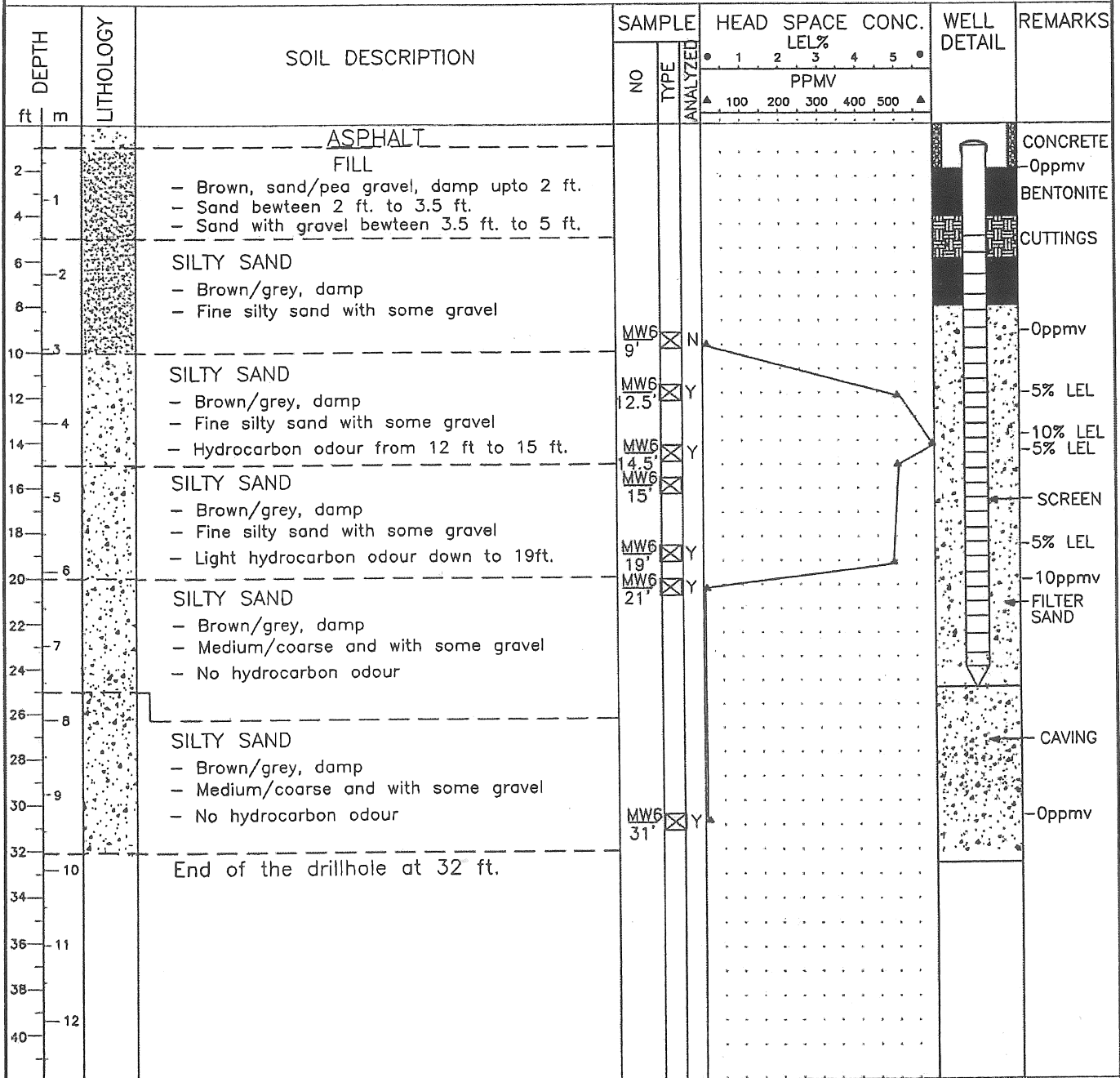
BUS: 604-277-2755
FAX: 604-277-5785

PROJECT NO: JDS-0128-0907

BOREHOLE SIZE: 6" (150mm)	PROJECT NAME: DSI
RISER CASING: 2" (150mm) i/d PVC	CLIENT NAME: B&K Distributors Inc.
SCREEN TYPE: PVC with #10 Horizontal Slots	SITE ADDRESS: 33590 King Road, Abbotsford., B.C.
SCREEN LENGTH: 20ft. (6.09m)	DRILLING COMPANY: Beck Drilling Ltd.
DATUM: Base of the Light Post near King Road	DRILLING METHOD: Solid Stem Auger
SUR. ELEV: 101.868 (top of stand pipe)	DRILLING DATE: OCT. 29, 2007
GWT. ELEV: 99.388m DATE: JUNE 01, 2006	SUPERVISED BY: MM

SAMPLE TYPE: AUGER SPLIT SPOON GRAB SHELBY TUBE CORE

LEGEND: FILTER PACK BENTONITE CEMENT GROUT CUTTING/BACKFILL SCREEN



NOTE: LEL-Lowest Explosive Limit; ppmv-Parts per million by volume