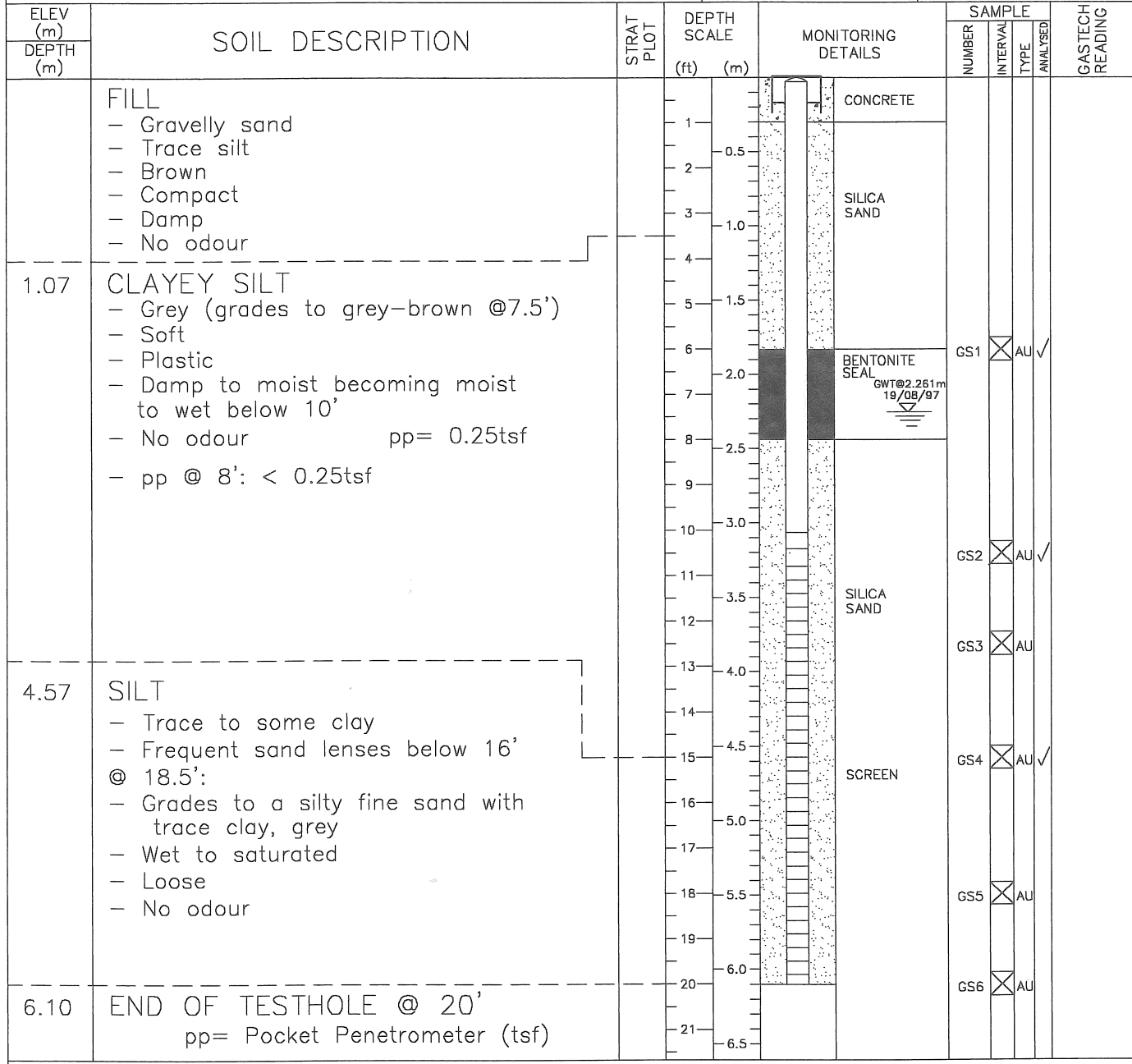


CLIENT: <u>SEKHON</u> PROJECT No: <u>J9708.061</u> PROJECT: <u>5611 RIVERSIDE STREET, MATSQUI, B.C.</u> AUGERHOLE LOCATION: <u>MW1(AH1)</u> DRILLER: <u>SDS DRILLING</u> DATE DRILLED: <u>AUG 13/97</u> DRILLING SUPERVISED BY: <u>JAS BINPAL</u> DRILLING METHOD: <u>SOLID STEM AUGER</u>	<b>AUGERHOLE MW1(AH1) SHEET 1 OF 11</b> ELEVATION: - DATUM: <u>ARBRITRARY 100.0m</u> - REF. PT. (TBM): <u>TOP OF LAMP POST ON CONC. PAD (SEE SITE SKETCH)</u> - ELEV TO GWT: <u>97.961m</u>		
MONITORING WELL DATA - PIPE: <u>2" DIA. PVC</u> - SCREEN: <u>10 FT. WITH NO.10 HORIZONTAL SLOTS</u> OTHER MONITORS:	<table border="1" style="width: 100%; border-collapse: collapse;"> <tr> <td style="width: 50%; vertical-align: top;">  WELL SCREEN (WATER LEVEL ELEV. m. YEAR/MONTH/DAY)   GAS MONITOR SCREEN (VAPOR READING, YEAR/MONTH/DAY)                 </td> <td style="width: 50%; vertical-align: top;"> <b>SAMPLE TYPE</b>                  SS - SPLIT SPOON SAMPLE                  WA - WASH SAMPLE                  AU - AUGER SAMPLE                  CN - CONTINUOUS SAMPLER                  RX - ROCK CORE                  GS - GRAB SAMPLE             </td> </tr> </table>	WELL SCREEN (WATER LEVEL ELEV. m. YEAR/MONTH/DAY) GAS MONITOR SCREEN (VAPOR READING, YEAR/MONTH/DAY)	<b>SAMPLE TYPE</b> SS - SPLIT SPOON SAMPLE WA - WASH SAMPLE AU - AUGER SAMPLE CN - CONTINUOUS SAMPLER RX - ROCK CORE GS - GRAB SAMPLE
WELL SCREEN (WATER LEVEL ELEV. m. YEAR/MONTH/DAY) GAS MONITOR SCREEN (VAPOR READING, YEAR/MONTH/DAY)	<b>SAMPLE TYPE</b> SS - SPLIT SPOON SAMPLE WA - WASH SAMPLE AU - AUGER SAMPLE CN - CONTINUOUS SAMPLER RX - ROCK CORE GS - GRAB SAMPLE		



PREPARED BY: BSK CHECKED BY: JSB DATE PREPARED: OCT 16/97  
 NOTE: THIS AUGERHOLE LOG WAS PREPARED FOR HYDROGEOLOGICAL AND/OR ENVIRONMENTAL ASSESSMENT PURPOSES AND DOES NOT NECESSARILY CONTAIN INFORMATION SUITABLE FOR A GEOTECHNICAL ASSESSMENT OF THE SUBSURFACE CONDITIONS. AUGERHOLE DATA REQUIRES INTERPRETATION BY CANASIA ENVIRONMENTAL PERSONNEL BEFORE USE BY OTHERS.