

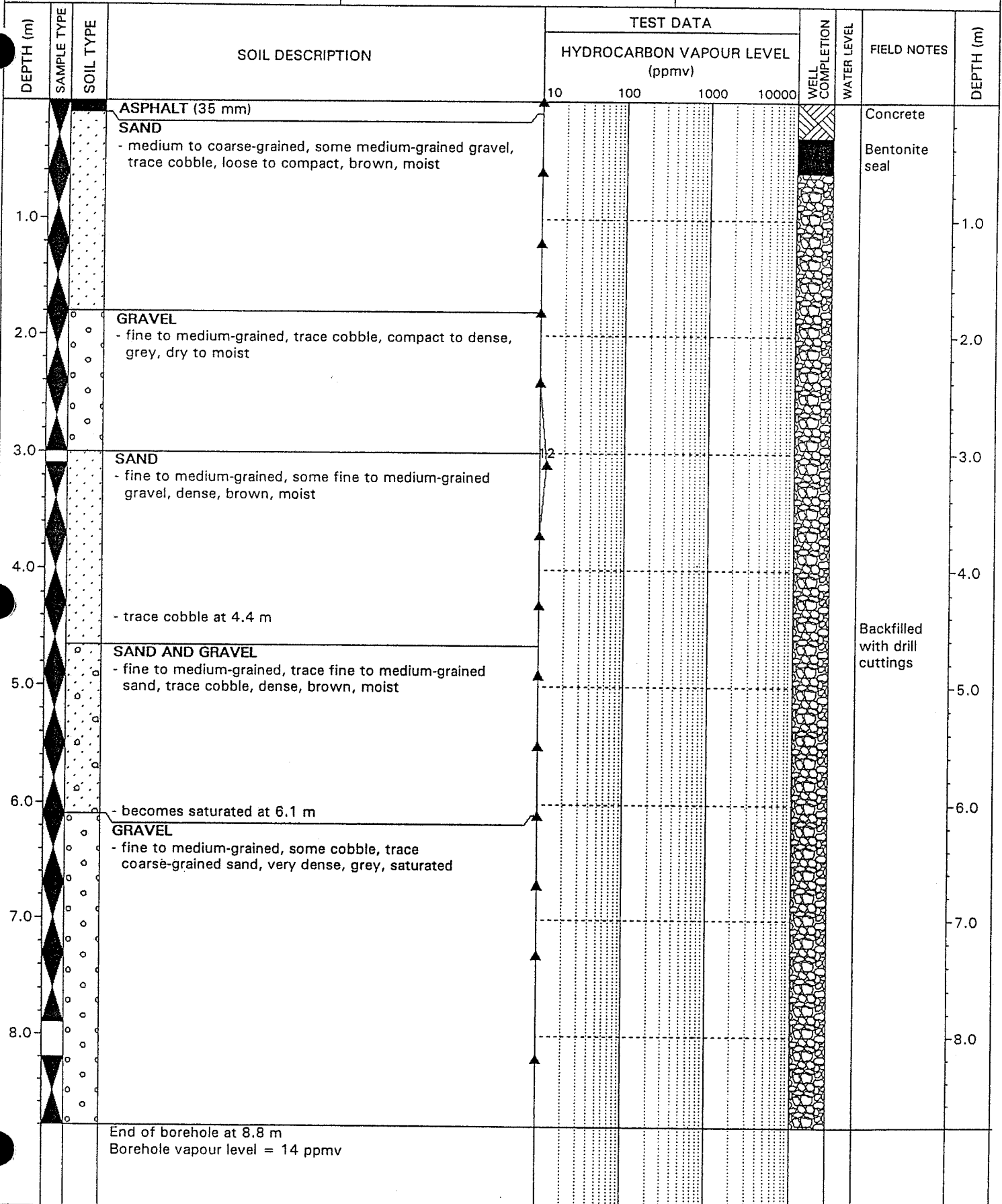
**SEACOR**  
ENVIRONMENTAL ENGINEERING INC.

CLIENT: CHEVRON CANADA LIMITED  
PROJECT: Chevron Service Station No. 1862  
1025 Trans Canada Highway  
Cache Creek, B.C.

**BOREHOLE LOG**

BOREHOLE NO: BH-1  
ELEVATION: 99.71 m

SEACOR JOB NO: K0002-158



DRILLING METHOD: Percussion Hammer: Logged by SK

DATE DRILLED: 9/22/97

- Notes:
-  NO RECOVERY
  -  AUGER SAMPLE
  -  SPLIT SPOON SAMPLE
  -  CONTINUOUS SAMPLE