



SNC-LAVALIN
Morrow Environmental

Client :
Shell Canada Products

Borehole No. : 08-21

Location :
Former Turbo Station (#4015), Williams Lake, BC

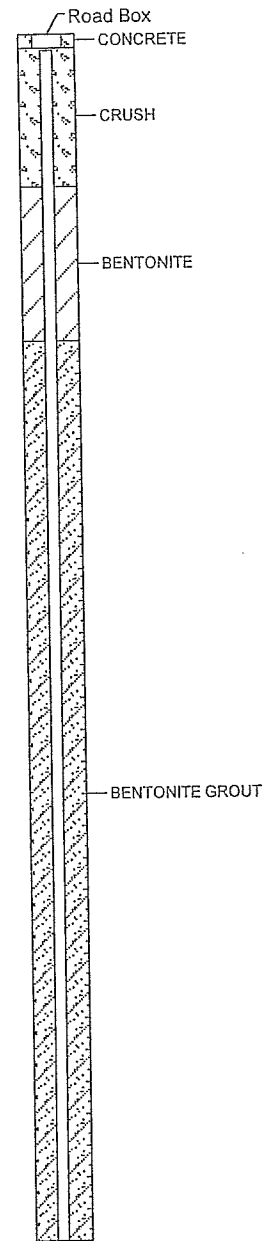
(Page 1 of 7)

Drilling Contractor: Spruce City/Mud Bay
Drilling Method : Hydrovac/Vibratory Sonic
Borehole Dia. (m) : 0.15
Pipe/Slotted Pipe Dia. (m): 0.05, 0.05

Date Monitored : 2008 11 03
Ground Surf Elev. (m) : 608.759
Top of Casing Elev. (m) : 608.603

Project Number : 130986
Borehole Logged By : RP
Date Drilled : 2008 10 26
Log Typed By : MB

Depth in Metres	Drilling Legend	Water/NAPL Levels	Stratigraphy Plot	Sample Interval/ Core Run	Sample Number	Blow Count	% Recovery	Soil Vapour (ppm)				Well Name: MW08-21				
								1	2	3	4					
0	<p>Drilling Legend</p> <p>▨ Sample Interval</p> <p>▧ Vibrasonic</p> <p>▩ Day-Lighting</p> <p>Water/NAPL Levels</p> <p>▽ Water Level 1</p> <p>▽ Water Level 2</p> <p>◆ NAPL</p> <p>◇ NAPL</p>	<p>○ Reading within indicated scale</p> <p>● Reading outside indicated scale</p>	<p>— Solid PVC</p> <p>— Slotted PVC</p>	<p>Soil Description</p>												
0 - 1				GRAVEL (FILL), fine and coarse, sandy, fine and coarse grained, orange brown, medium dense, dry.												
1 - 2																
2 - 3																
3 - 4										63						
4 - 5																
5 - 6								21-01				150				
6 - 7				CLAY and SILT, some gravel, fine and coarse, trace sand, coarse grained, grey brown/green grey, firm, low to medium plasticity, damp.				21-02				25				
7 - 8				CLAY, silty, some sand, fine grained, trace gravel, fine, subangular, brown/grey brown, firm, medium plasticity, damp. Below 7.6 m - trace cobble, coarse, subrounded.				21-03				50				
8 - 9				CLAY and GRAVEL, fine and coarse gravel, subangular, subrounded, trace sand, medium to coarse grained, red brown, dense, stiff, medium plasticity, damp. At 8.2 m - boulder. Below 8.5 m - brown.				21-04				50				
9 - 10				GRAVEL, fine and coarse, subrounded, silty, trace sand, fine grained, trace cobble, light grey brown, dense, dry.				21-05				25				
10 - 11				SILT, clayey, some gravel, fine and coarse subangular, grey brown, very stiff, dense, damp. Below 11.3 m - friable.						150						
11 - 12																



Print Date: 2009 05 12, Date Approved: 2008 11 05

...Continued

Notes:
 Bolded sample denotes sample analyzed.
 Sample 21-11 is a blind field duplicate of sample 21-10.
 Sample 21-21 is a blind field duplicate of sample 21-20.
 Sample 21-31 is a blind field duplicate of sample 21-30.



SNC-LAVALIN
Morrow Environmental

Client :
Shell Canada Products

Borehole No. : 08-21

Location :
Former Turbo Station (#4015), Williams Lake, BC

(Page 2 of 7)

Drilling Contractor: Spruce City/Mud Bay
Drilling Method : Hydrovac/Vibratory Sonic
Borehole Dia. (m) : 0.15
Pipe/Slotted Pipe Dia. (m) : 0.05, 0.05

Date Monitored : 2008 11 03
Ground Surf Elev. (m) : 608.759
Top of Casing Elev. (m) : 608.603

Project Number : 130986
Borehole Logged By : RP
Date Drilled : 2008 10 26
Log Typed By : MB

Depth in Metres	Drilling Legend	Water/NAPL Levels	Stratigraphy Plot	Sample Interval/ Core Run	Sample Number	Blow Count	% Recovery	Soil Vapour (ppm)				Well Name: MW08-21
								1	2	3	4	
12	<p>Sample Interval</p> <p>Vibrasonic</p> <p>Day-Lighting</p>	<p>Water Level 1</p> <p>Water Level 2</p> <p>NAPL</p> <p>NAPL</p>	[Stratigraphy Plot]	21-06	[Sample Number]	[Blow Count]	[% Recovery]	660				BENTONITE GROUT
13								075				
14	[Stratigraphy Plot]	[Water/NAPL Levels]	[Stratigraphy Plot]	21-07	[Sample Number]	140	[% Recovery]	075				BENTONITE GROUT
15								075				
16	[Stratigraphy Plot]	[Water/NAPL Levels]	[Stratigraphy Plot]	21-08	[Sample Number]	[Blow Count]	[% Recovery]	0200				BENTONITE GROUT
17								0200				
18	[Stratigraphy Plot]	[Water/NAPL Levels]	[Stratigraphy Plot]	21-09	[Sample Number]	140	[% Recovery]	475				BENTONITE GROUT
19								475				
20	[Stratigraphy Plot]	[Water/NAPL Levels]	[Stratigraphy Plot]	21-10 21-11	[Sample Number]	[Blow Count]	[% Recovery]	0150				BENTONITE GROUT
21								0150				
22	[Stratigraphy Plot]	[Water/NAPL Levels]	[Stratigraphy Plot]	21-12	[Sample Number]	[Blow Count]	[% Recovery]	0				BENTONITE GROUT
23								0				
24	[Stratigraphy Plot]	[Water/NAPL Levels]	[Stratigraphy Plot]	21-13	[Sample Number]	[Blow Count]	[% Recovery]	0				BENTONITE GROUT
24								0				

Print Date: 2009 05 12, Date Approved: 2008 11 05

...Continued

Notes:

Bolded sample denotes sample analyzed.
Sample 21-11 is a blind field duplicate of sample 21-10.
Sample 21-21 is a blind field duplicate of sample 21-20.
Sample 21-31 is a blind field duplicate of sample 21-30.



SNC-LAVALIN
Morrow Environmental

Client :
Shell Canada Products

Borehole No. : 08-21

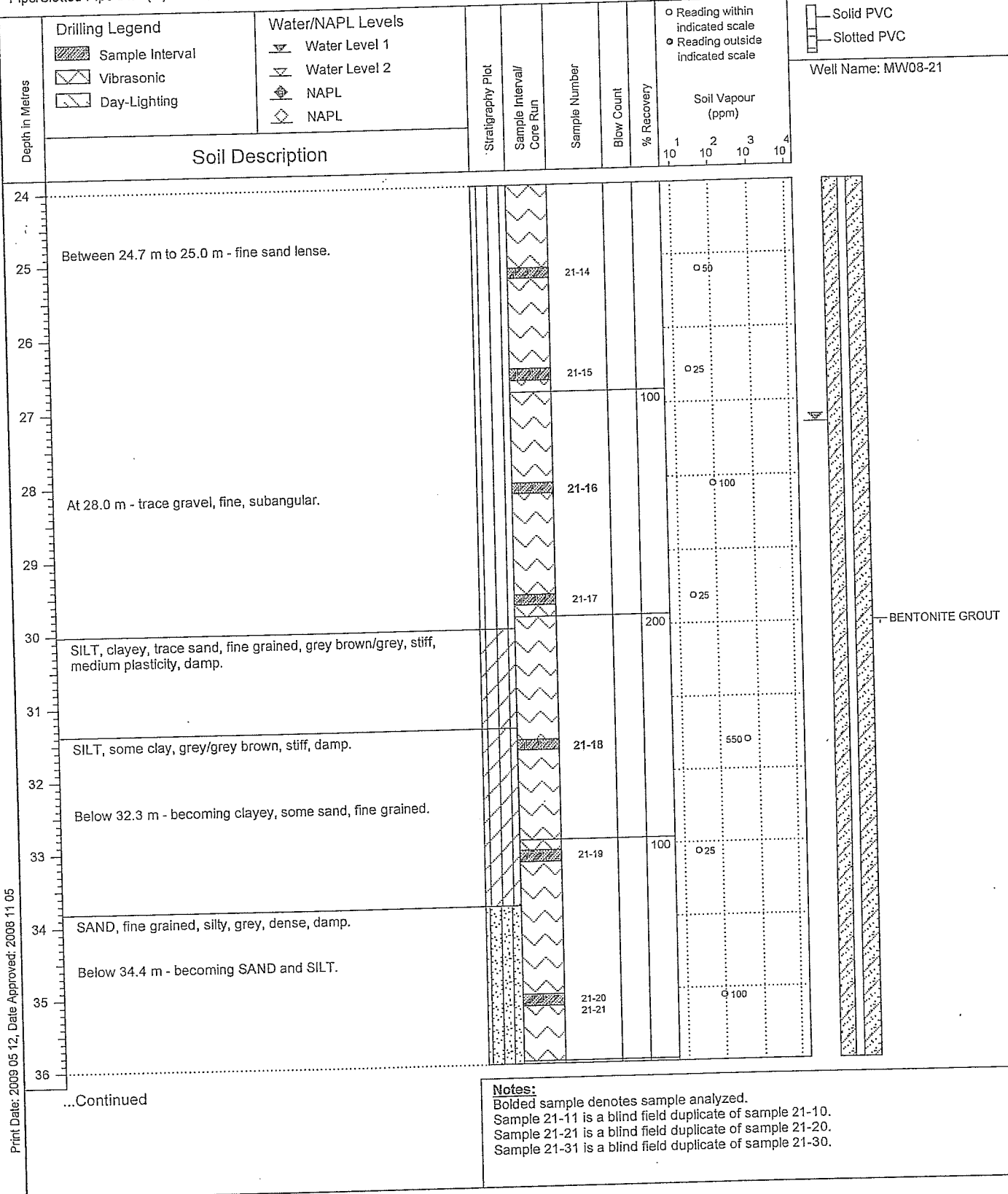
Location :
Former Turbo Station (#4015), Williams Lake, BC

(Page 3 of 7)

Drilling Contractor: Spruce City/Mud Bay
Drilling Method : Hydrovac/Vibratory Sonic
Borehole Dia. (m) : 0.15
Pipe/Slotted Pipe Dia. (m): 0.05, 0.05

Date Monitored : 2008 11 03
Ground Surf Elev. (m) : 608.759
Top of Casing Elev. (m) : 608.603

Project Number : 130986
Borehole Logged By : RP
Date Drilled : 2008 10 26
Log Typed By : MB



Print Date: 2009 05 12, Date Approved: 2008 11 05

Notes:
 Bolded sample denotes sample analyzed.
 Sample 21-11 is a blind field duplicate of sample 21-10.
 Sample 21-21 is a blind field duplicate of sample 21-20.
 Sample 21-31 is a blind field duplicate of sample 21-30.



SNC-LAVALIN
Morrow Environmental

Client :
Shell Canada Products

Borehole No. : 08-21

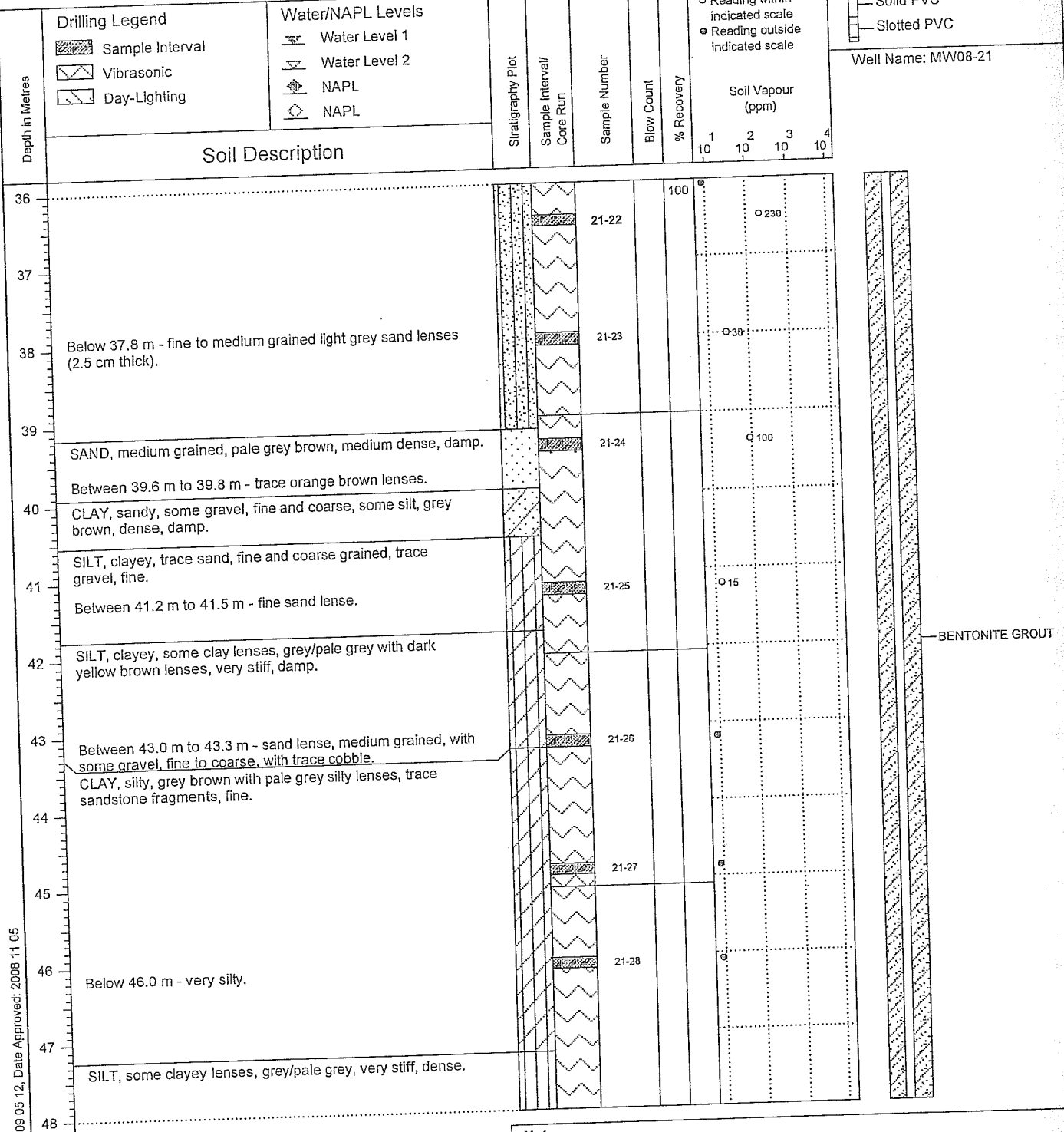
Location :
Former Turbo Station (#4015), Williams Lake, BC

(Page 4 of 7)

Drilling Contractor: Spruce City/Mud Bay
Drilling Method : Hydrovac/Vibratory Sonic
Borehole Dia. (m) : 0.15
Pipe/Slotted Pipe Dia. (m): 0.05, 0.05

Date Monitored : 2008 11 03
Ground Surf Elev. (m) : 608.759
Top of Casing Elev. (m) : 608.603

Project Number : 130986
Borehole Logged By : RP
Date Drilled : 2008 10 26
Log Typed By : MB



Notes:
 Bolded sample denotes sample analyzed.
 Sample 21-11 is a blind field duplicate of sample 21-10.
 Sample 21-21 is a blind field duplicate of sample 21-20.
 Sample 21-31 is a blind field duplicate of sample 21-30.

Print Date: 2009 05 12, Date Approved: 2008 11 05



SNC-LAVALIN
Morrow Environmental

Client:
Shell Canada Products

Borehole No. : 08-21

Location:
Former Turbo Station (#4015), Williams Lake, BC

(Page 5 of 7)

Drilling Contractor: Spruce City/Mud Bay
Drilling Method : Hydrovac/Vibratory Sonic
Borehole Dia. (m) : 0.15
Pipe/Slotted Pipe Dia. (m): 0.05, 0.05

Date Monitored : 2008 11 03
Ground Surf Elev. (m) : 608.759
Top of Casing Elev. (m) : 608.603

Project Number : 130986
Borehole Logged By : RP
Date Drilled : 2008 10 26
Log Typed By : MB

Depth in Metres	Drilling Legend	Water/NAPL Levels	Stratigraphy Plot	Sample Interval/ Core Run	Sample Number	Blow Count	% Recovery	Soil Vapour (ppm)				Well Name: MW08-21	
								1	2	3	4		
48	At 47.9 m - trace compact siltstone gravel, trace sand, coarse grained.				21-29		110						
49	SILT, clayey, some gravel, coarse, subrounded, trace sand, medium to coarse grained, grey brown with red/rust patches around gravel, dense, damp.				21-30 21-31					125			
50	CLAY, silty, some silt lenses, trace sand, coarse grained, grey, stiff, dense, low to medium plasticity, damp.												
51	SILT, trace sand, fine grained, trace clay, grey, dense, very low to low plasticity, damp.				21-32					30			
52	Between 51.5 m to 52.4 m - some clayey sand and trace gravel and trace rust brown/orange brown sandy inclusions.				21-33		140			140			
53	Below 53.3 m - trace coarse grained sand, trace gypsum crystals, polished surfaces.				21-34					25			
54													
55	CLAY, silty, trace sand, medium grained, trace gravel, fine, brown/grey brown.				21-35					325			
56	Below 55.8 m - some coarse subangular sand.												
57	CLAY, silty, grey/green grey, very stiff, dense, damp.				21-36					40			
58	Below 57.6 m - becoming SILT, clayey.				21-37					50			
59													
60	Below 59.7 m - trace brown laminations.				21-38					30			

○ Reading within indicated scale
● Reading outside indicated scale

Well Name: MW08-21

BENTONITE GROUT

...Continued

Notes:

Bolded sample denotes sample analyzed.
Sample 21-11 is a blind field duplicate of sample 21-10.
Sample 21-21 is a blind field duplicate of sample 21-20.
Sample 21-31 is a blind field duplicate of sample 21-30.



SNC-LAVALIN
Morrow Environmental

Client :
Shell Canada Products

Borehole No. : 08-21

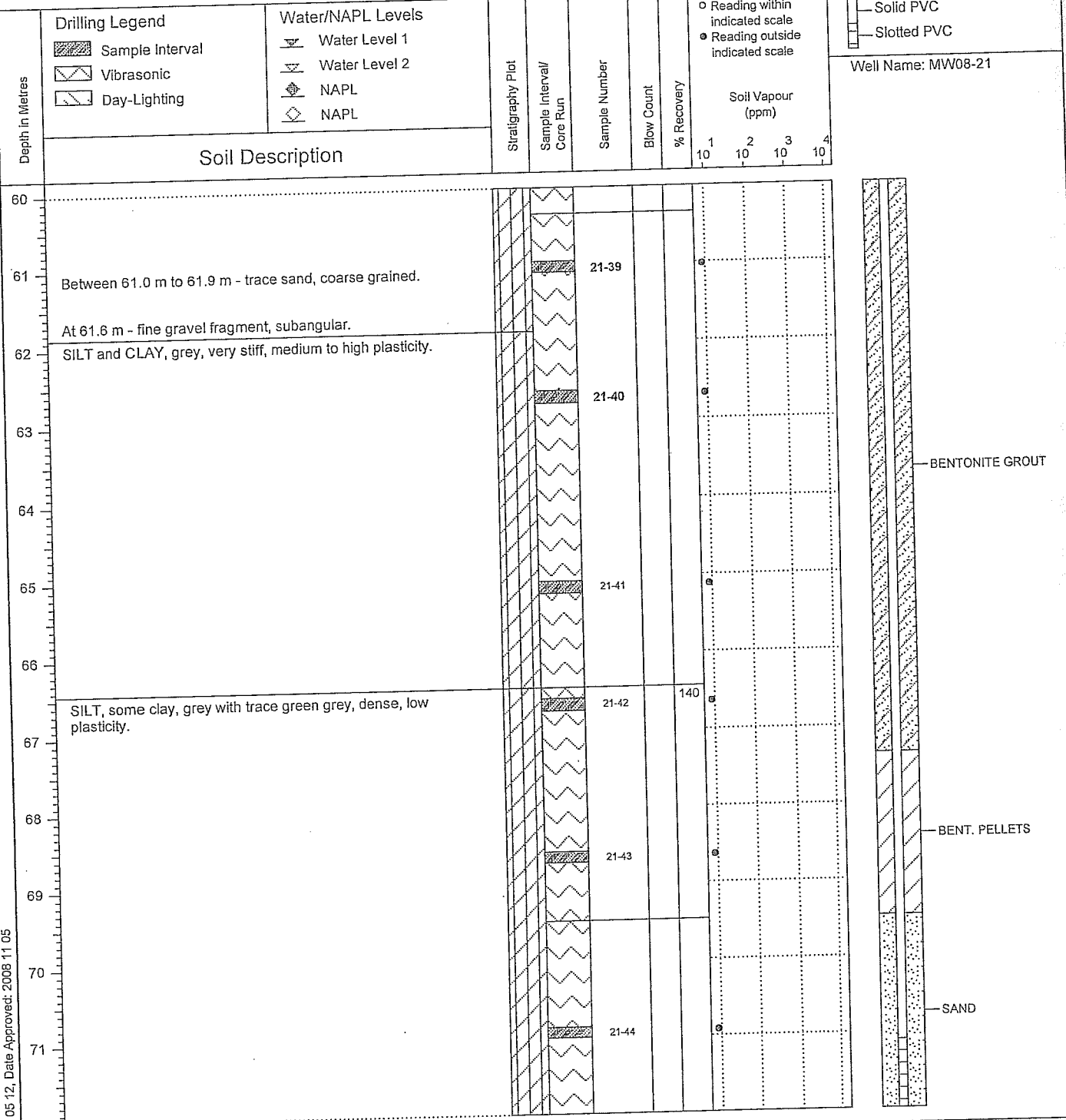
Location :
Former Turbo Station (#4015), Williams Lake, BC

(Page 6 of 7)

Drilling Contractor: Spruce City/Mud Bay
Drilling Method : Hydrovac/Vibratory Sonic
Borehole Dia. (m) : 0.15
Pipe/Slotted Pipe Dia. (m): 0.05, 0.05

Date Monitored : 2008 11 03
Ground Surf Elev. (m) : 608.759
Top of Casing Elev. (m) : 608.603

Project Number : 130986
Borehole Logged By : RP
Date Drilled : 2008 10 26
Log Typed By : MB



Print Date: 2009 05 12, Date Approved: 2008 11 05

...Continued

Notes:
 Bolded sample denotes sample analyzed.
 Sample 21-11 is a blind field duplicate of sample 21-10.
 Sample 21-21 is a blind field duplicate of sample 21-20.
 Sample 21-31 is a blind field duplicate of sample 21-30.



SNC-LAVALIN
Morrow Environmental

Client :
Shell Canada Products

Borehole No. : 08-21

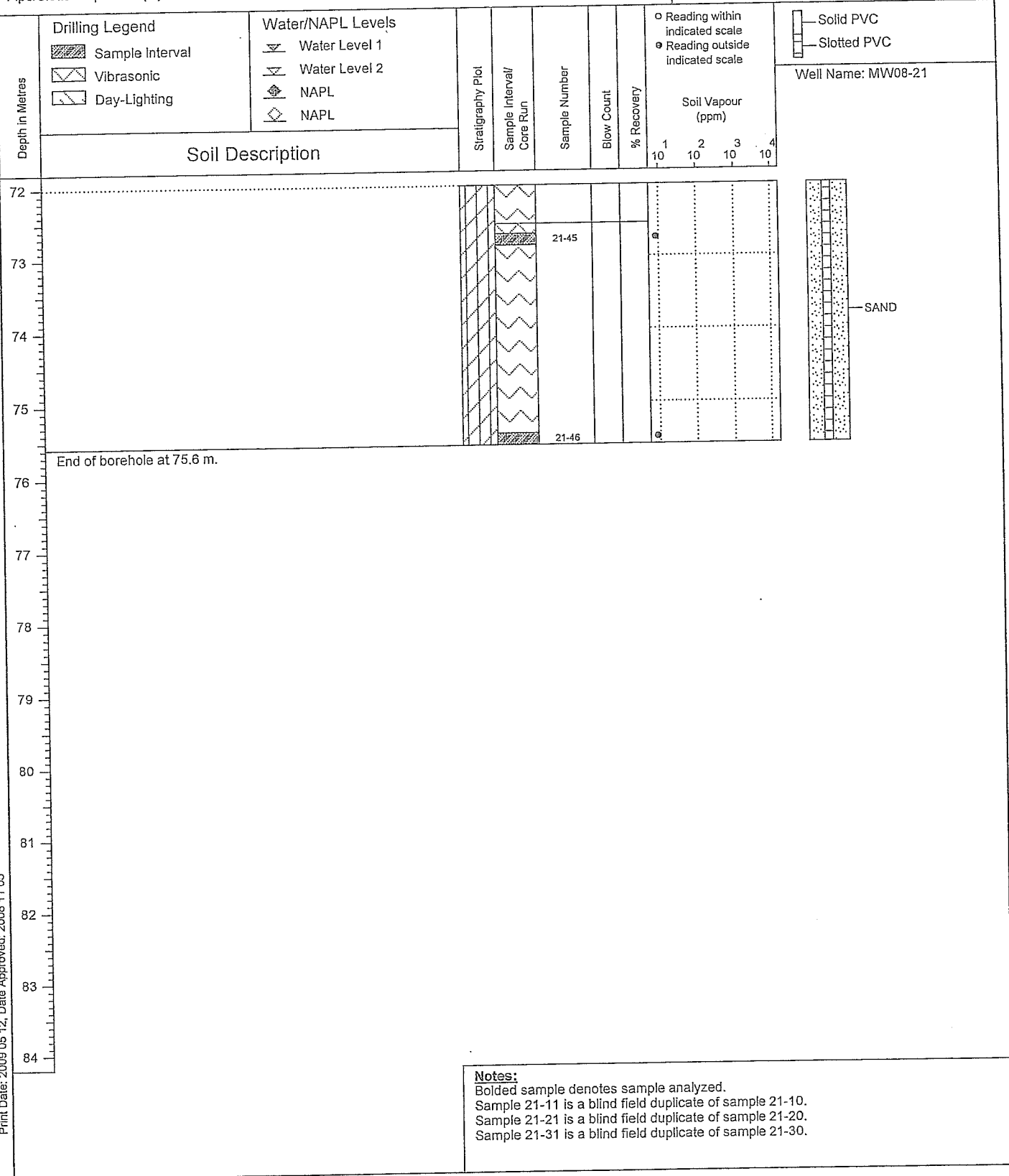
Location :
Former Turbo Station (#4015), Williams Lake, BC

(Page 7 of 7)

Drilling Contractor: Spruce City/Mud Bay
Drilling Method : Hydrovac/Vibratory Sonic
Borehole Dia. (m) : 0.15
Pipe/Slotted Pipe Dia. (m): 0.05, 0.05

Date Monitored : 2008 11 03
Ground Surf Elev. (m) : 608.759
Top of Casing Elev. (m) : 608.603

Project Number : 130986
Borehole Logged By : RP
Date Drilled : 2008 10 26
Log Typed By : MB



Notes:
 Bolded sample denotes sample analyzed.
 Sample 21-11 is a blind field duplicate of sample 21-10.
 Sample 21-21 is a blind field duplicate of sample 21-20.
 Sample 21-31 is a blind field duplicate of sample 21-30.