



SNC-LAVALIN
Morrow Environmental

Client :
Focus Holdings (Victoria) Ltd.

Borehole No. : 06-2

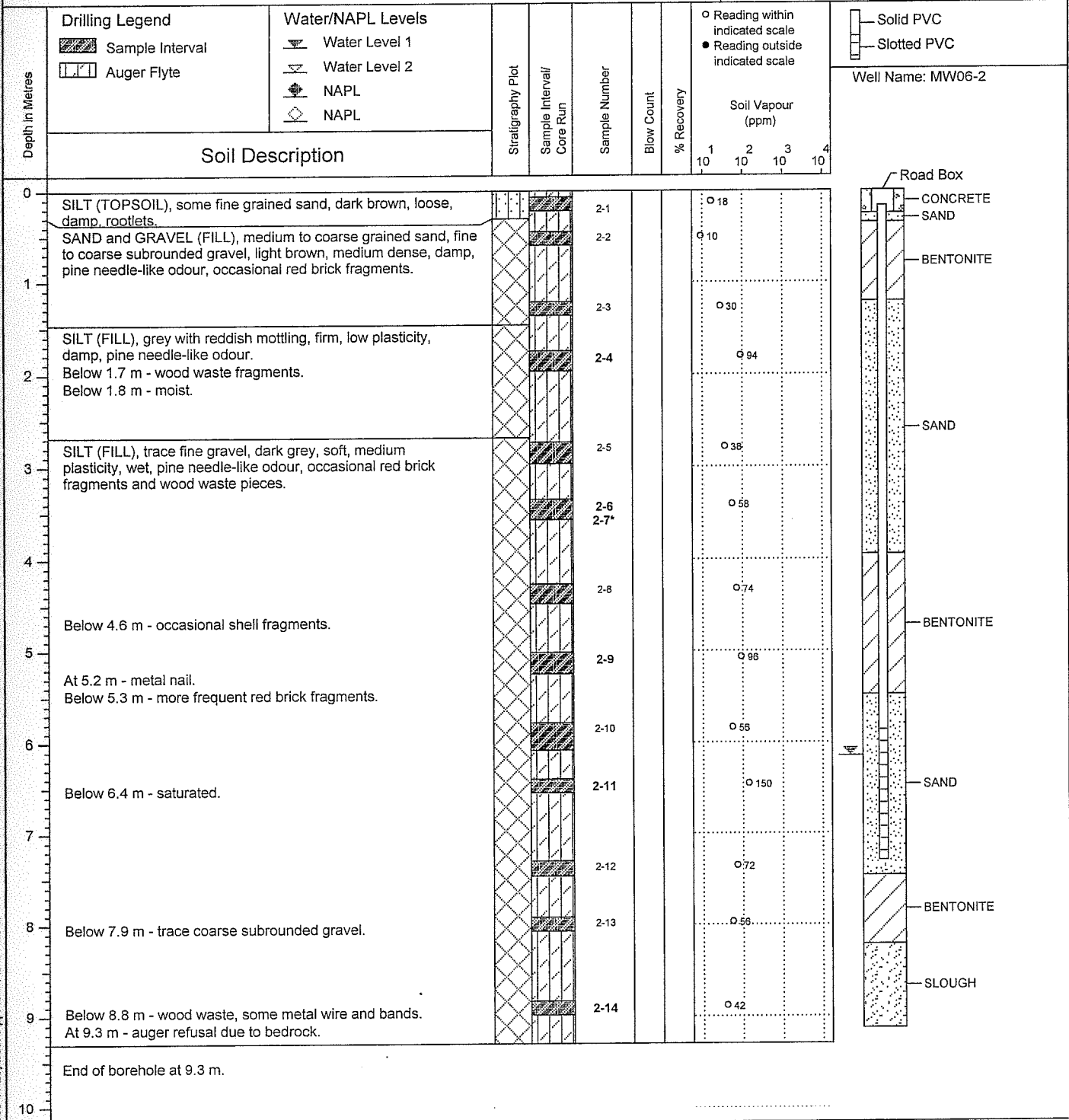
Location :
CP Rail Songhees Yard, Victoria, BC

(Page 1 of 1)

Drilling Contractor: Drillwell Enterprises Ltd.
Drilling Method : Solid Stem Auger
Borehole Dia. (m) : 0.20
Pipe/Slotted Pipe Dia. (m): 0.05, 0.05

Date Monitored : 2006 01 30
Ground Surf Elev. (m) : 11.11
Top of Casing Elev. (m) : 10.95

Project Number : 130752
Borehole Logged By : DGP
Date Drilled : 2006 01 26
Log Typed By : MAL



Notes:
 Bolded sample denotes sample analyzed.
 *Sample 2-7 is a blind field duplicate of 2-6.

Print Date: 2006 10 20, Date Approved: 2006 04 17