

Project No: 507-0199

Borehole No.: BH07-1 (MW07-1)

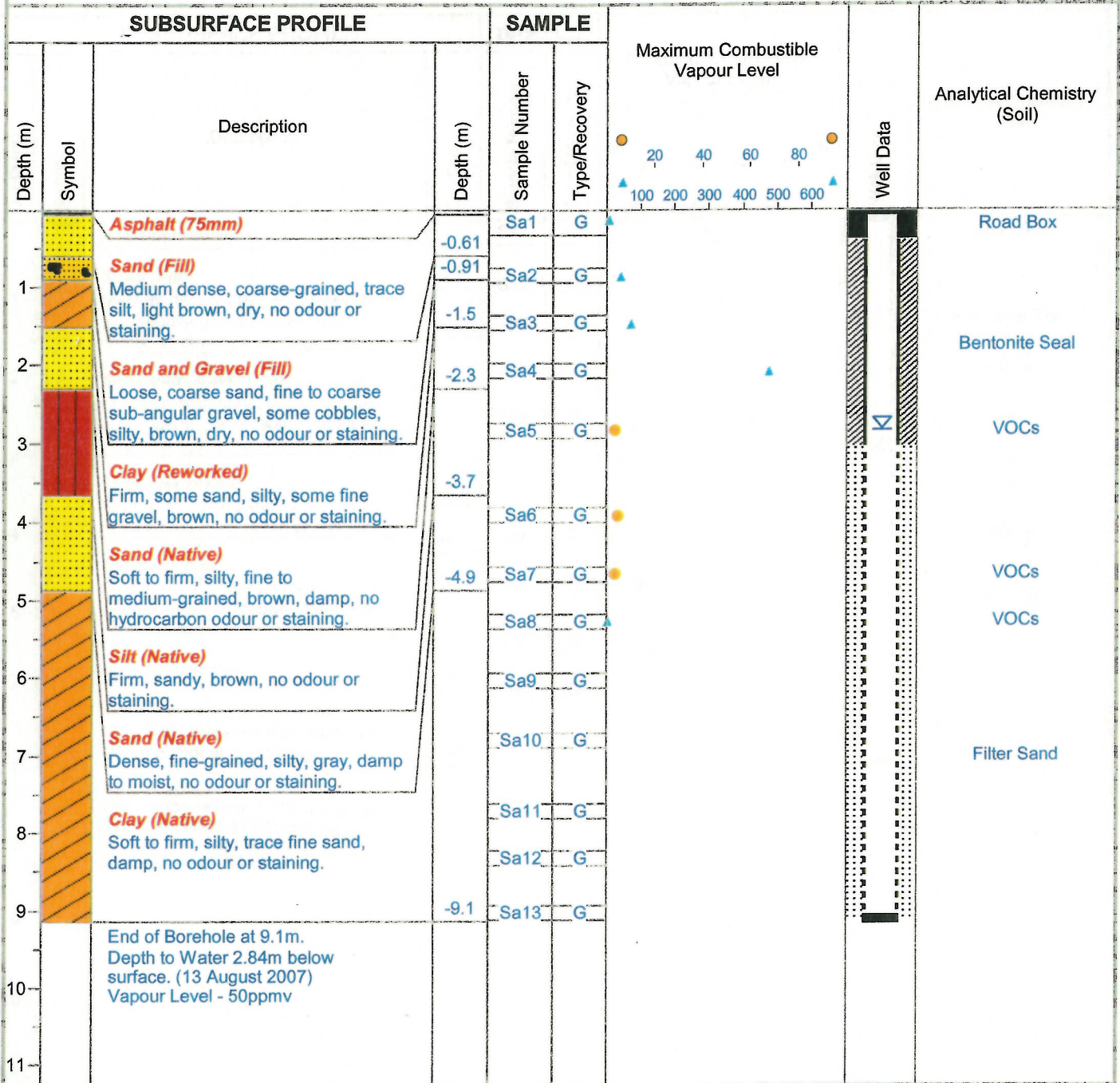
Project: Stage 2 Preliminary Site Investigation

Client: 1917 Sooke Road LP

Date: 9 August 2007

Location: 1913 and 1917 Sooke Road, Colwood, BC

Logged By: Wendy Beairsto, B.Sc.



Completed By: Drillwell Enterprises Ltd.

LEVELTON CONSULTANTS LTD.
760 Enterprise Crescent
Victoria, BC
V8Z 6R4

Method: GP 1300

Ground Elevation (m): N/A

Date: 8 August 2007

Sheet: 1 of 1