



SNC-LAVALIN
Environment

Client :
Shell Canada Products

Borehole No. : 09-40D

Location :

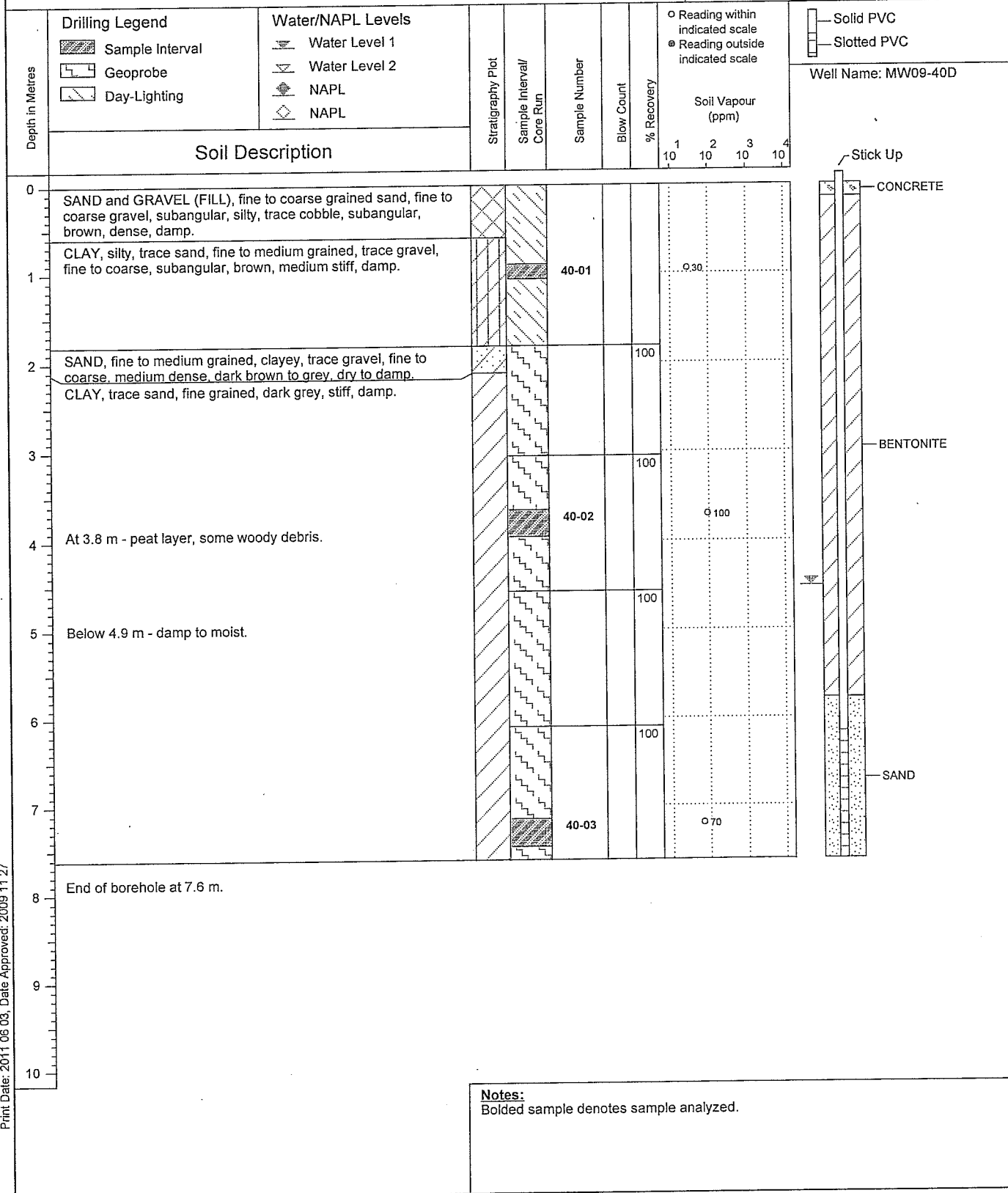
Former Shell Cardlock - 1737 Alaska Ave, Dawson Creek, BC

(Page 1 of 1)

Drilling Contractor: Eveready/Geotech
Drilling Method : Hydrovac/Geoprobe
Borehole Dia. (m) : 0.08
Pipe/Slotted Pipe Dia. (m): 0.04, 0.04

Date Monitored : 2011 03 29
Ground Surf Elev. (m) : 671.892
Top of Casing Elev. (m) : 672.682

Project Number :130262
Borehole Logged By :JM
Date Drilled :2009 10 15
Log Typed By :NN



Print Date: 2011 06 03, Date Approved: 2009 11 27

Notes:
Bolded sample denotes sample analyzed.

K Summary Table - 130262

| Well ID | Type of Test | Hydraulic Conductivity (m/s) | Stratigraphy Within the Saturated Screen Interval |
|----------|--------------|------------------------------|---|
| MW07-30 | Rising Head | 2.50E-09 | CLAY, trace silt, trace gravel, dark grey with light grey mottling, still damp, rootlets, organics |
| MW08-33 | Rising Head | 5.90E-10 | CLAY silty, some fine to coarse grain sand, trace fine gravel, grey brown, medium still, non-plastic, damp |
| MW09-40S | Rising Head | 5.37E-10 | CLAY trace sand, fine grained, dark grey, stiff, damp |
| MW09-40D | Rising Head | 1.60E-10 | CLAY trace sand, fine grained, dark grey, stiff, damp to moist |
| MW09-43D | Rising Head | 1.03E-10 | SILT, some clay, trace sand, fine grained, dark brown to black, grey mottling, soft, plastic, moist organic odour dry to damp |