



SNC-LAVALIN
Environment

Client :
Shell Canada Products

Borehole No. : BH12-7D

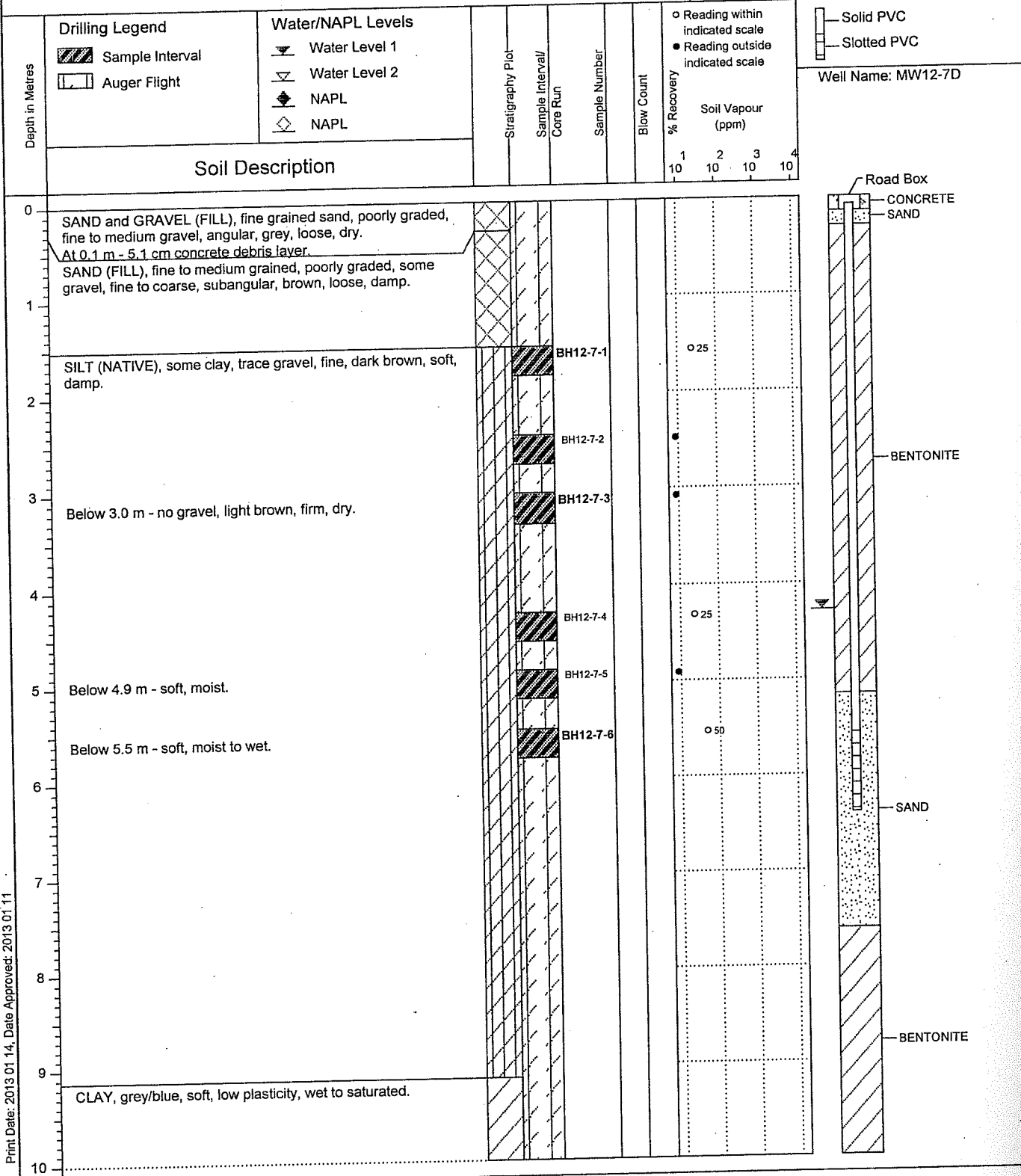
Location :
550 Bay Street, Victoria, BC

(Page 1 of 2)

Drilling Contractor: Drillwell Enterprises Ltd.
Drilling Method : Solid Stem Auger
Borehole Dia. (m) : 0.20
Pipe/Slotted Pipe Dia. (m): 0.05, 0.05

Date Monitored : 2012 09 12
Ground Surf Elev. (m) : 5.94
Top of Casing Elev. (m) : 5.86
Northing: 4961.21233 Easting: 4984.5527

Project Number :134081
Borehole Logged By :PKS
Date Drilled :2012 08 21
Log Typed By :MAL



Print Date: 2013 01 14, Date Approved: 2013 01 11

...Continued

Notes:
Bolted sample denotes sample analyzed.
Well installed with hollow stem auger.
MW12-7D screen interval - 5.5 m to 6.4 m.



SNC-LAVALIN
Environment

Client :
Shell Canada Products

Borehole No. : BH12-7D

Location :
550 Bay Street, Victoria, BC

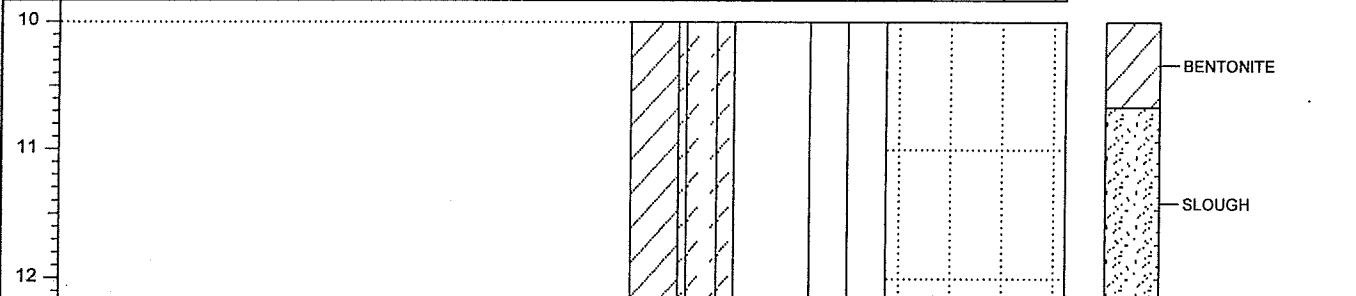
(Page 2 of 2)

Drilling Contractor: Drillwell Enterprises Ltd.
Drilling Method : Solid Stem Auger
Borehole Dia. (m) : 0.20
Pipe/Slotted Pipe Dia. (m): 0.05, 0.05

Date Monitored : 2012 09 12
Ground Surf Elev. (m) : 5.94
Top of Casing Elev. (m) : 5.86
Northing: 4961.21233 Easting: 4984.5527

Project Number :134081
Borehole Logged By :PKS
Date Drilled :2012 08 21
Log Typed By :MAL

| | | | | | | | | | |
|-----------------|---------------------------------|--|-------------------|------------------------------|---------------|------------|------------|----------------------|--|
| Depth in Metres | Drilling Legend | Water/NAPL Levels | Stratigraphy Plot | Sample Interval/ Core Run | Sample Number | Blow Count | % Recovery | Soil Vapour (ppm) | Solid PVC Slotted PVC Well Name: MW12-7D |
| | Sample Interval Auger Flight | Water Level 1 Water Level 2 NAPL NAPL | | | | | | | |



End of borehole at 12.2 m.

Print Date: 2013 01 14, Date Approved: 2013 01 11

Notes:
 Bolded sample denotes sample analyzed.
 Well installed with hollow stem auger.
 MW12-7D screen interval - 5.5 m to 6.4 m.