



SNC-LAVALIN
Morrow Environmental

Client :
Shell Canada Products

Borehole No. : BH06-1

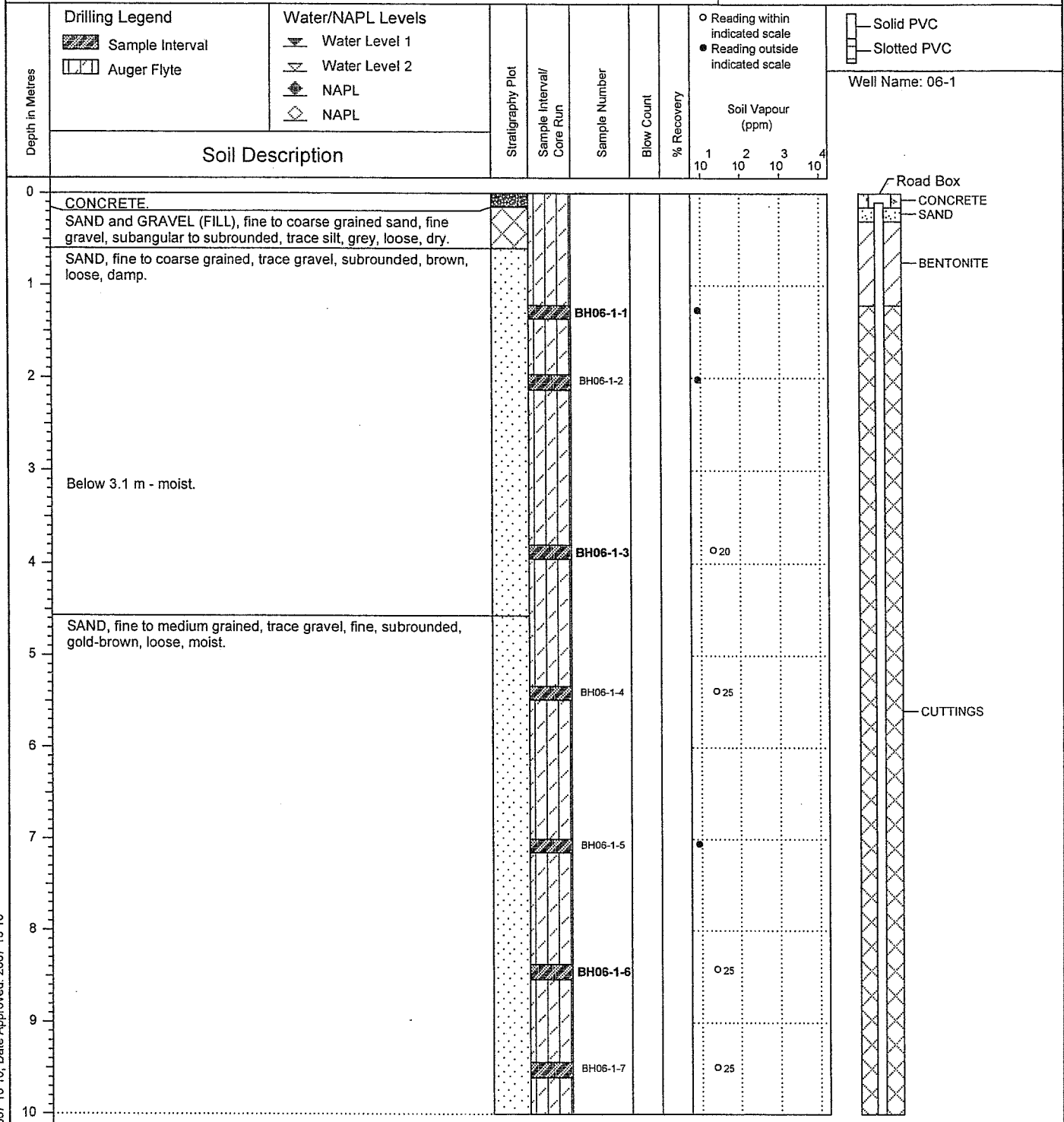
Location :
662 Goldstream Avenue, Langford, BC

(Page 1 of 3)

Drilling Contractor: Drillwell Enterprises Ltd.
Drilling Method : Solid Stem Auger
Borehole Dia. (m) : 0.20
Pipe/Slotted Pipe Dia. (m): 0.05, 0.05

Date Monitored : 2006 05 25
Ground Surf Elev. (m) : 73.94
Top of Casing Elev. (m) : 73.853

Project Number : 131203
Borehole Logged By : JM
Date Drilled : 2006 05 15
Log Typed By : MAL



...Continued

Notes:

- Bolded sample denotes sample analyzed.
- *Sample BH06-1-11 is a blind field duplicate of BH06-1-10.
- *Sample BH06-1-13 is a blind field duplicate of BH06-1-12.
- *Sample BH06-1-18 is a blind field duplicate of BH06-1-17.



SNC-LAVALIN
Morrow Environmental

Client :
Shell Canada Products

Borehole No. : BH06-1

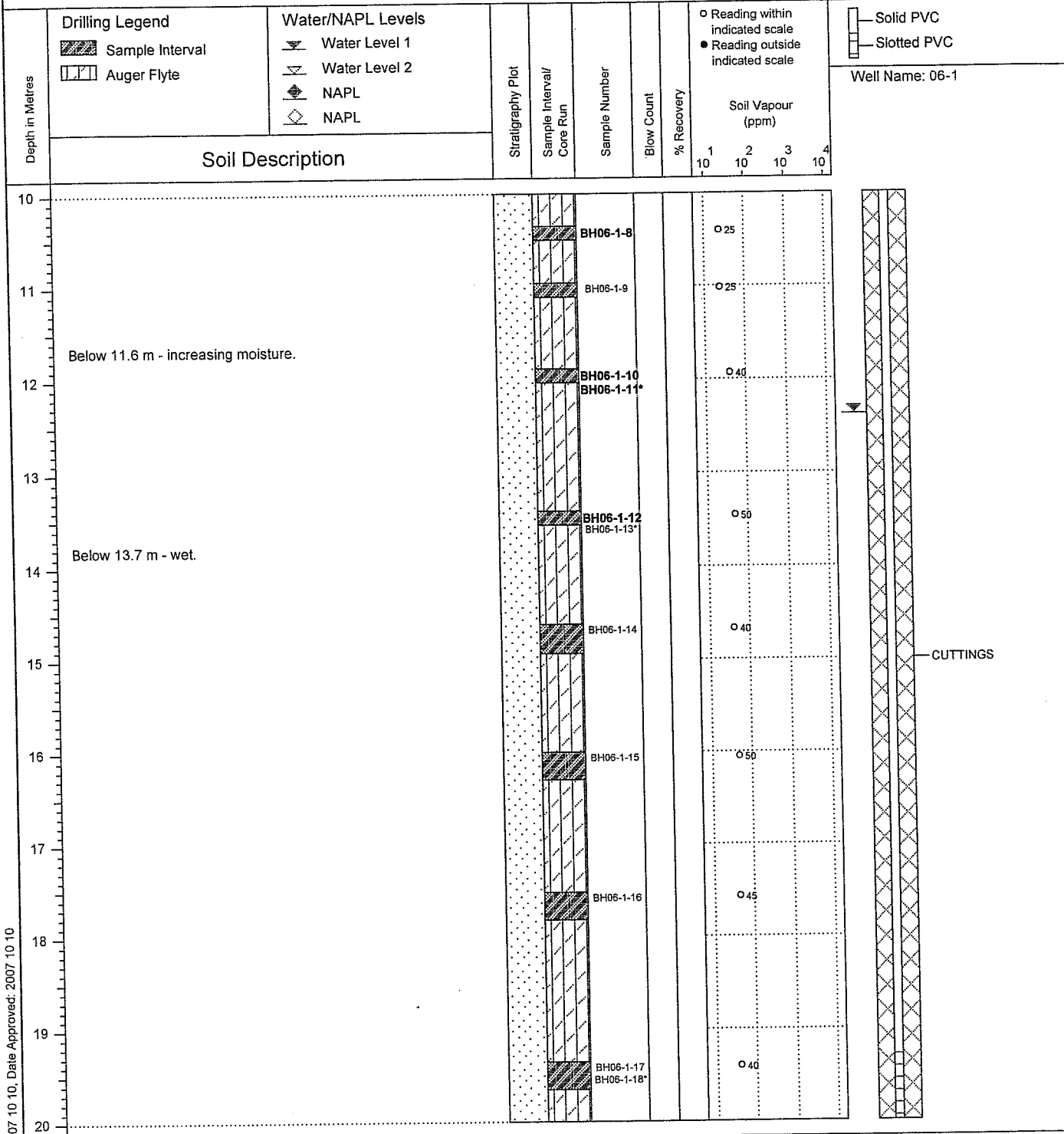
Location :
662 Goldstream Avenue, Langford, BC

(Page 2 of 3)

Drilling Contractor: Drillwell Enterprises Ltd.
Drilling Method : Solid Stem Auger
Borehole Dia. (m) : 0.20
Pipe/Slotted Pipe Dia. (m): 0.05, 0.05

Date Monitored : 2006 05 25
Ground Surf Elev. (m) : 73.94
Top of Casing Elev. (m) : 73.853

Project Number : 131203
Borehole Logged By : JM
Date Drilled : 2006 05 15
Log Typed By : MAL



Print Date: 2007 10 10, Date Approved: 2007 10 10

...Continued

Notes:
 Bolded sample denotes sample analyzed.
 *Sample BH06-1-11 is a blind field duplicate of BH06-1-10.
 *Sample BH06-1-13 is a blind field duplicate of BH06-1-12.
 *Sample BH06-1-18 is a blind field duplicate of BH06-1-17.



SNC-LAVALIN
Morrow Environmental

Client :
Shell Canada Products

Borehole No. : BH06-1

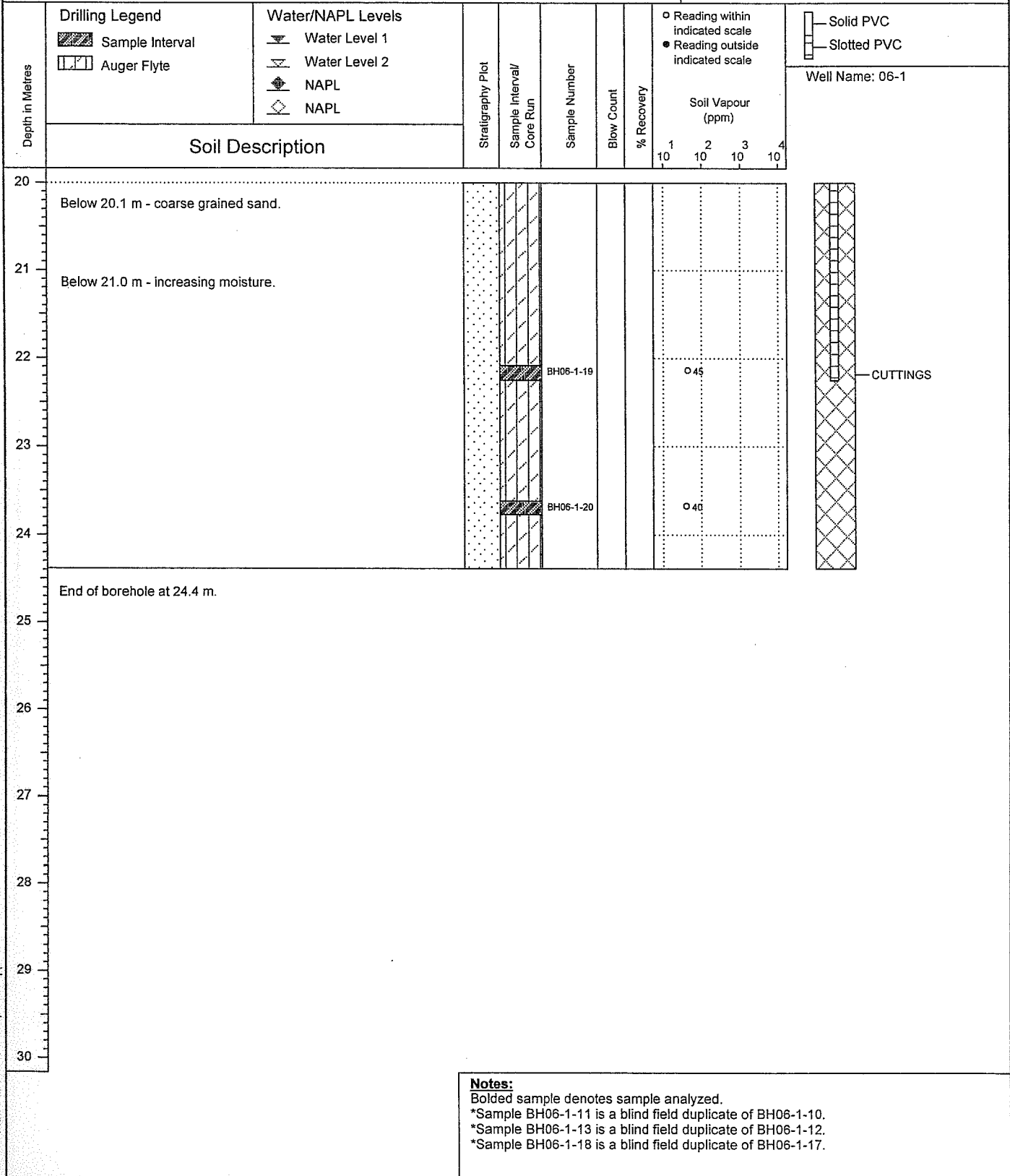
Location :
662 Goldstream Avenue, Langford, BC

(Page 3 of 3)

Drilling Contractor: Drillwell Enterprises Ltd.
Drilling Method : Solid Stem Auger
Borehole Dia. (m) : 0.20
Pipe/Slotted Pipe Dia. (m): 0.05, 0.05

Date Monitored : 2006 05 25
Ground Surf Elev. (m) : 73.94
Top of Casing Elev. (m) : 73.853

Project Number : 131203
Borehole Logged By : JM
Date Drilled : 2006 05 15
Log Typed By : MAL



Notes:
 Bolded sample denotes sample analyzed.
 *Sample BH06-1-11 is a blind field duplicate of BH06-1-10.
 *Sample BH06-1-13 is a blind field duplicate of BH06-1-12.
 *Sample BH06-1-18 is a blind field duplicate of BH06-1-17.

Print Date: 2007 10 10, Date Approved: 2007 10 10