

Appendix 1.

HS Jansen and Sons 2017 Nutrient Management Plan – Site Maps

(all maps but Figure 1 courtesy of AGRI)

Figure 1. Location Map – HS Jansen and Sons Hullcar Farm

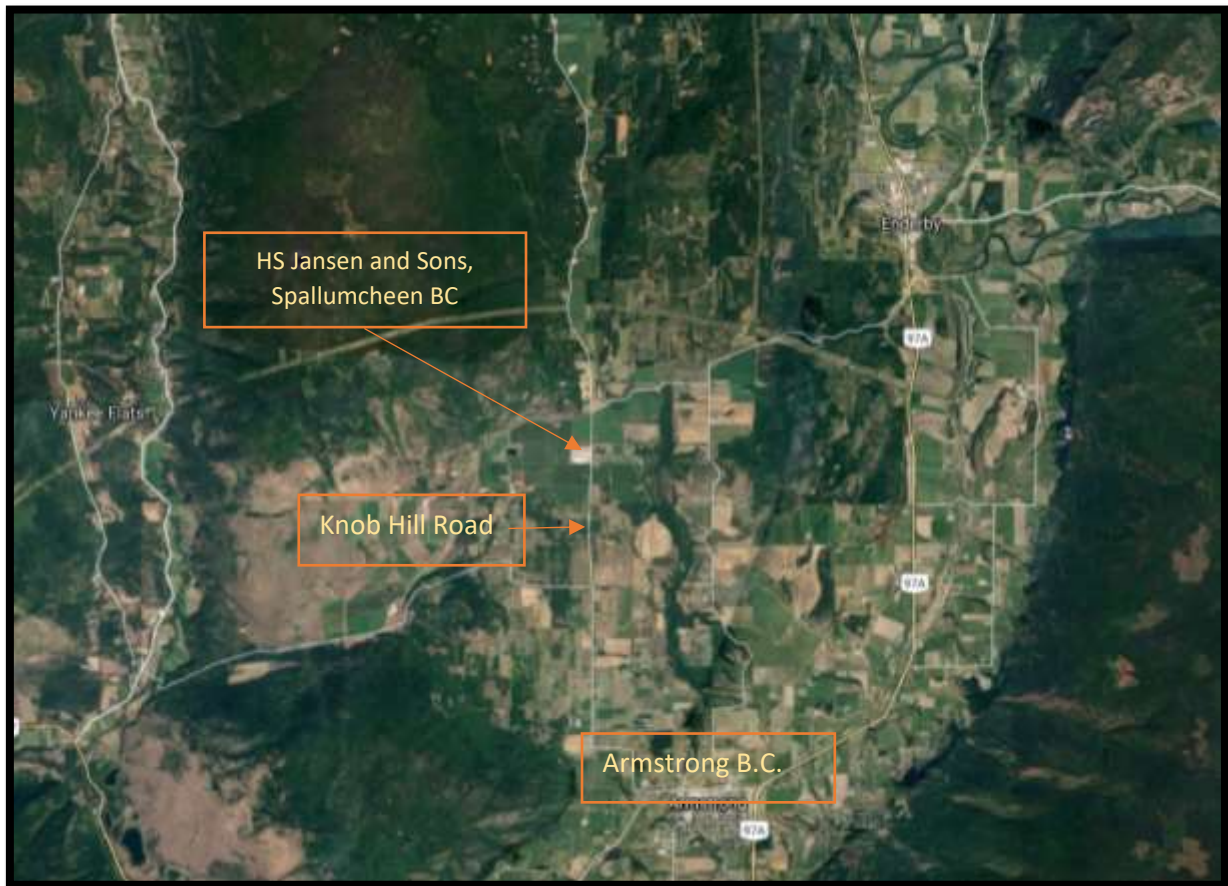
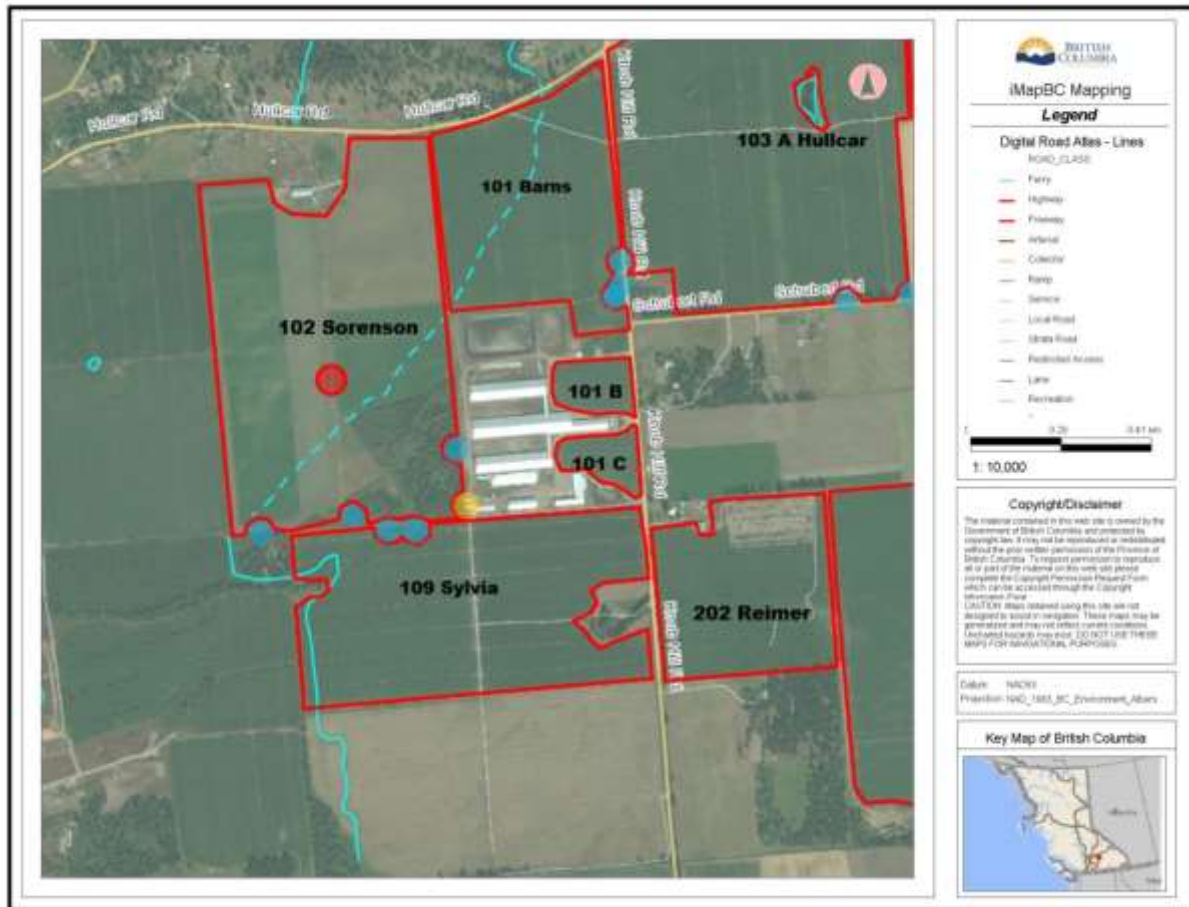


Figure 2. Fields 101, 102, 109 and 202







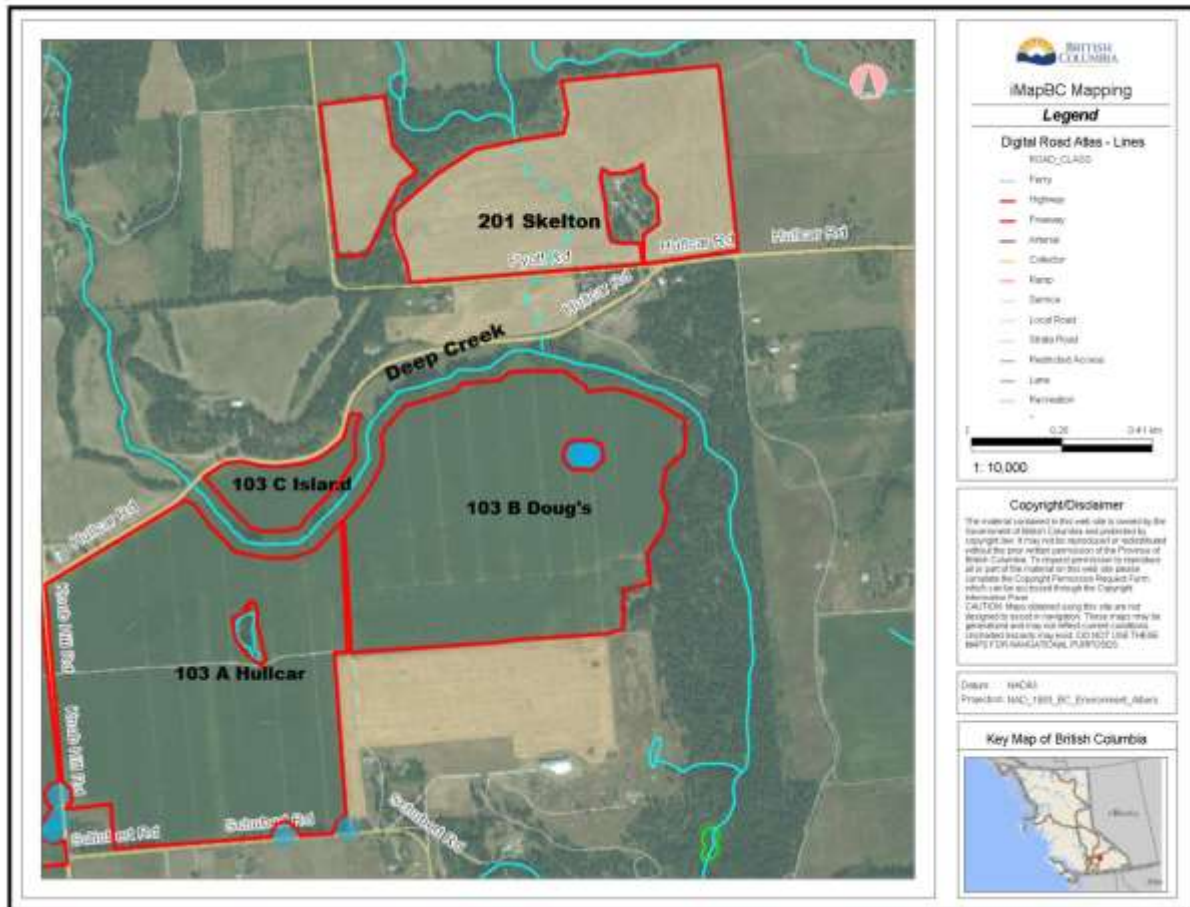
Legend	
	Field borders*
	Domestic well
	Livestock watering well
	Irrigation Well
*nutrient application areas including 30m setbacks to wells and surface water	

Figure 3. Fields 103A, B and C, and 201







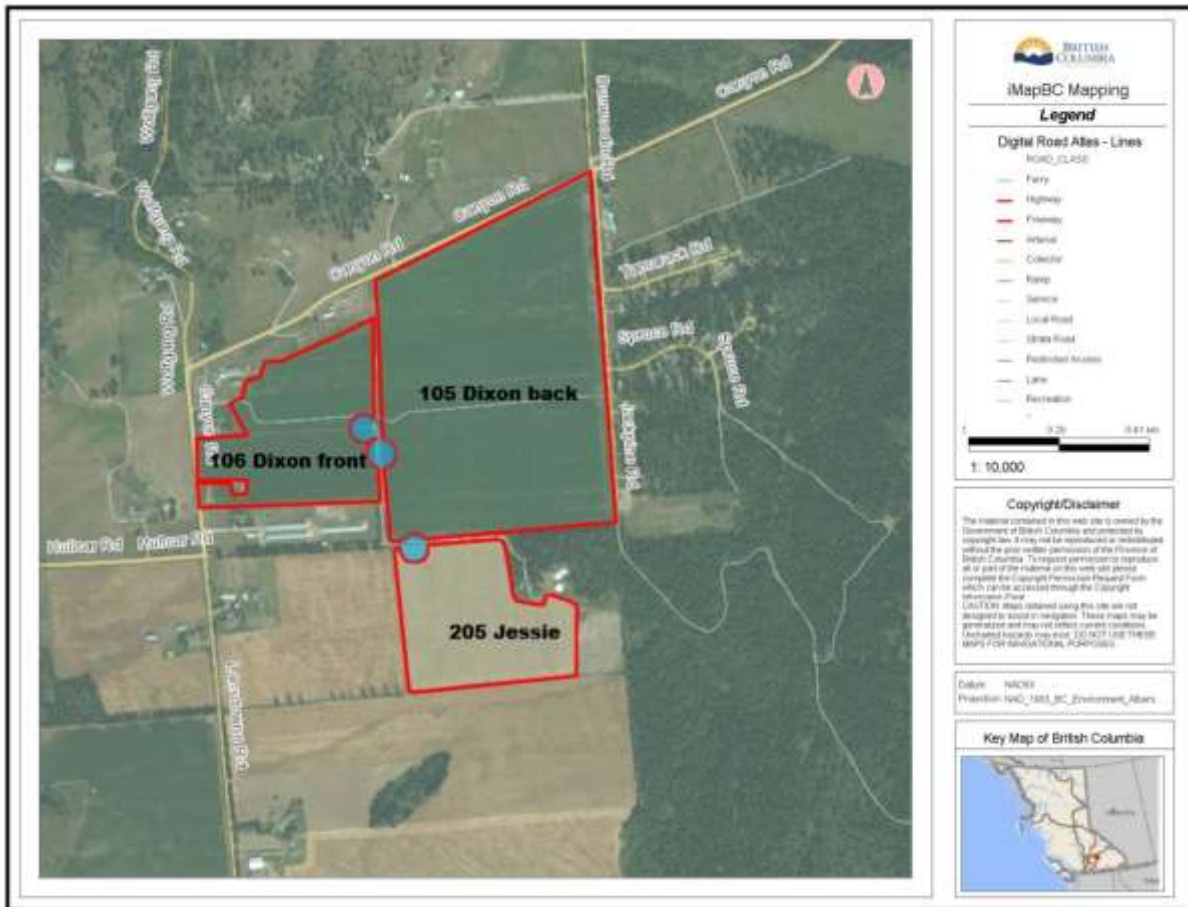
Legend	
	Field borders*
	Domestic well
	Livestock watering well
	Irrigation Well
*nutrient application areas including 30m setbacks to wells and surface water	

Figure 4. Fields 105, 106 and 205







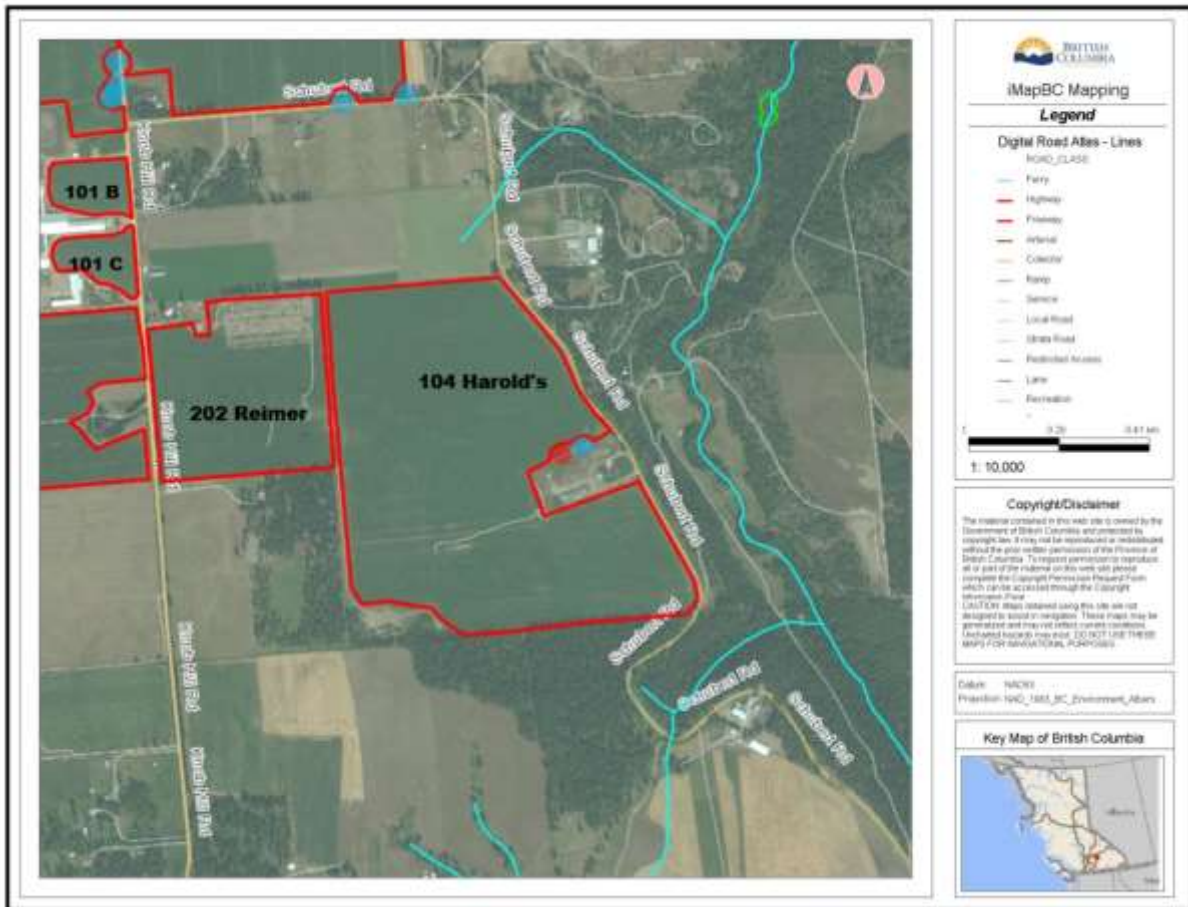
Legend	
	Field borders*
	Domestic well
	Livestock watering well
	Irrigation Well
*nutrient application areas including 30m setbacks to wells and surface water	

Figure 5. Fields 104 and 202










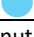
Legend	
	Field borders*
	Domestic well
	Livestock watering well
	Irrigation Well
*nutrient application areas including 30m setbacks to wells and surface water	

Figure 6. Field 400 (401 and 402) Lavington



Legend	
	Field borders*
	Domestic well
	Livestock watering well
	Irrigation Well
*nutrient application areas including 30m setbacks to wells and surface water	