

Overview of Class Size and Composition in British Columbia Public Schools 2015/16

School District 041 Burnaby

These class size data are current as of October 31, 2015 and have been verified by school districts.



Ministry of
Education

December 2015
Analysis and Reporting Unit

PLEASE NOTE

The Ministry makes small and continuous improvements to the quality of its data. Sometimes these changes result in differences from previously published reports. The data in this report are the most accurate data available at time of publication.

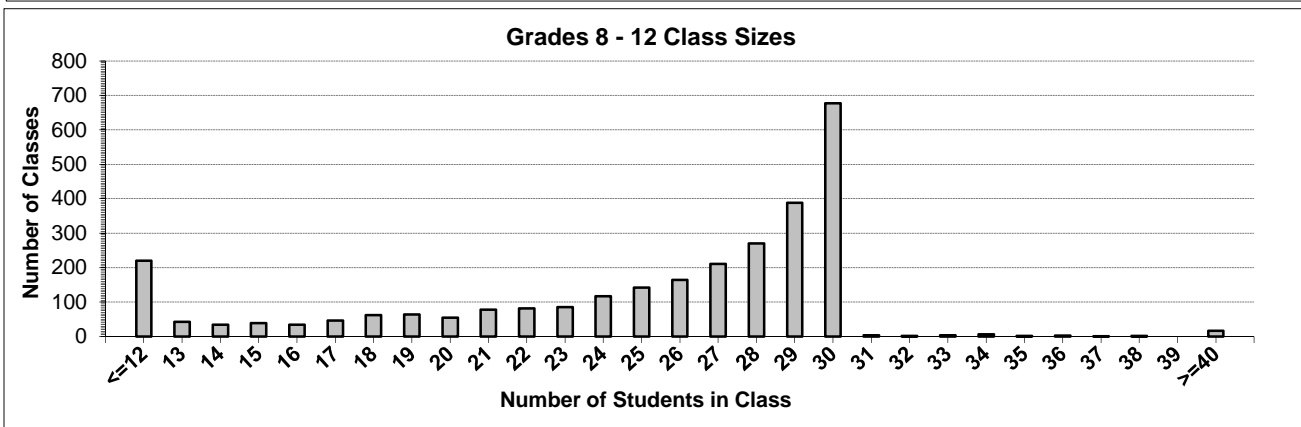
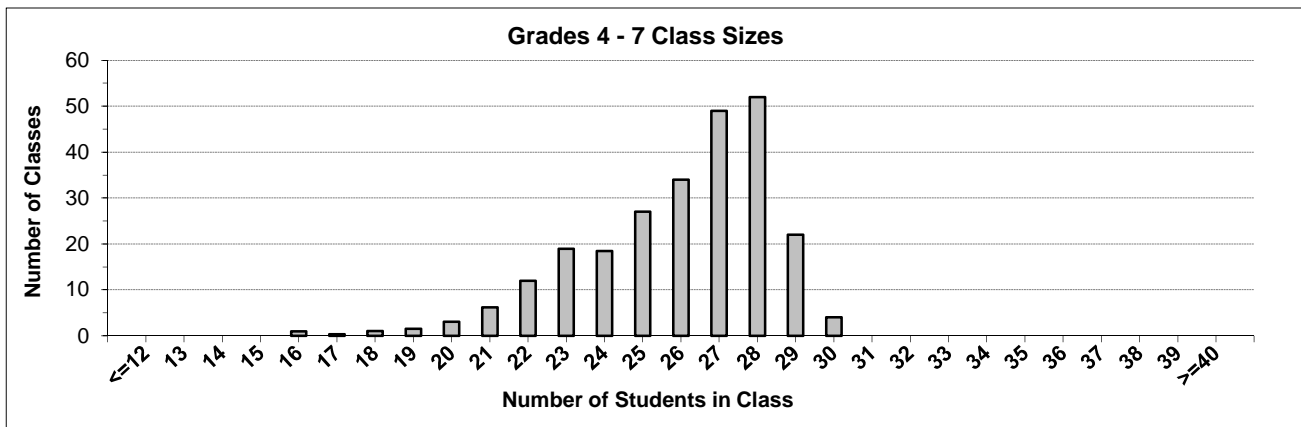
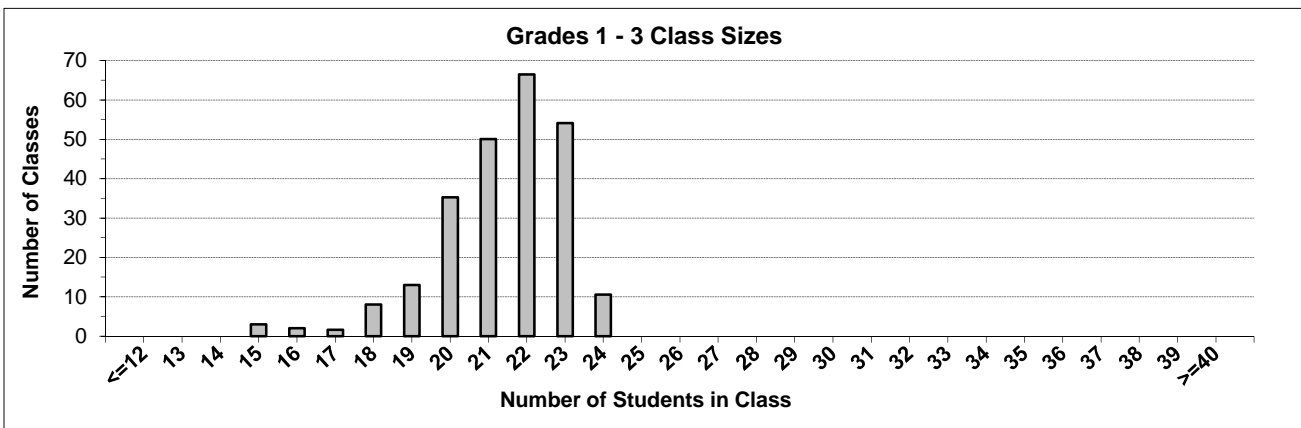
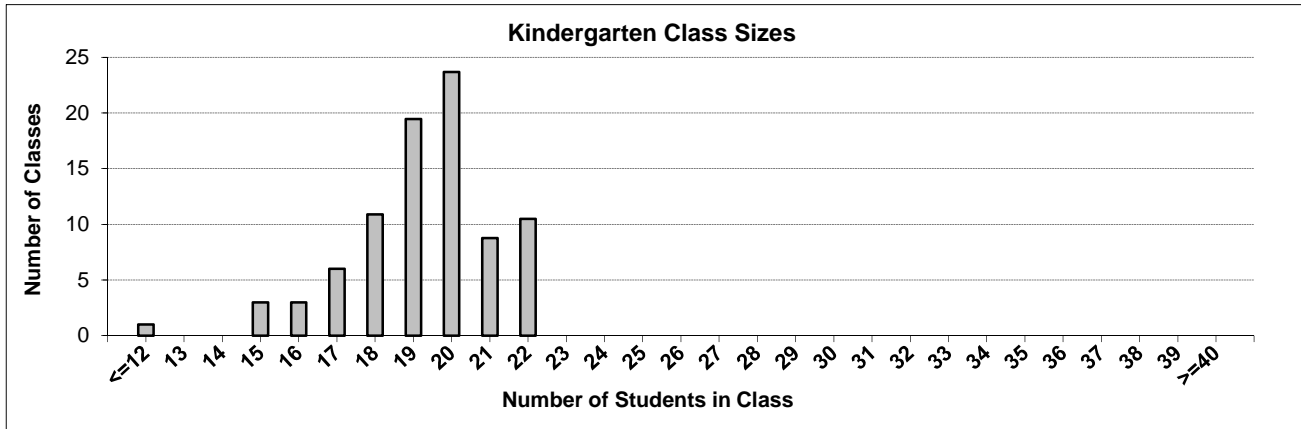
Ministry reports are available at <http://www.bced.gov.bc.ca/reporting/>

Contact the Analysis and Reporting Unit at educ.reportingunit@gov.bc.ca

District Class Sizes

041 Burnaby

Source: Class size data collection (as of October 31) from BC public schools.



District - Average Class Size

041 Burnaby

Source: Class size data collection (as of October 31) from BC public schools.

District - Average Class Size	Kindergarten	Grade 1 - 3	Grade 4 - 7	Grade 8 - 12
	19.2	21.4	25.9	24.8

Province - Average Class Size	Kindergarten	Grade 1 - 3	Grade 4 - 7	Grade 8 - 12
	19.7	21.8	26.0	23.4

Number of Reported Classes with Assigned Education Assistants	630
---	-----

Number of Reported Schools in District	49
--	----

Number of Reported Classes in District	3,433
--	-------

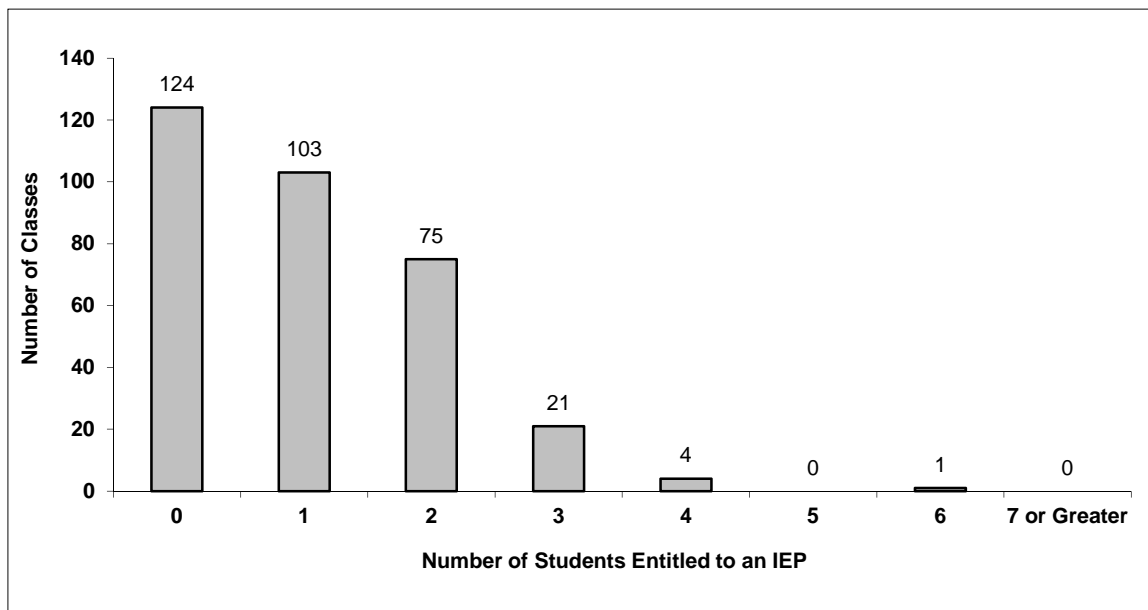
Number of Reported Classes in District with more than 30 Students	41
---	----

District - Students Entitled to an Individual Education Plan (IEP)

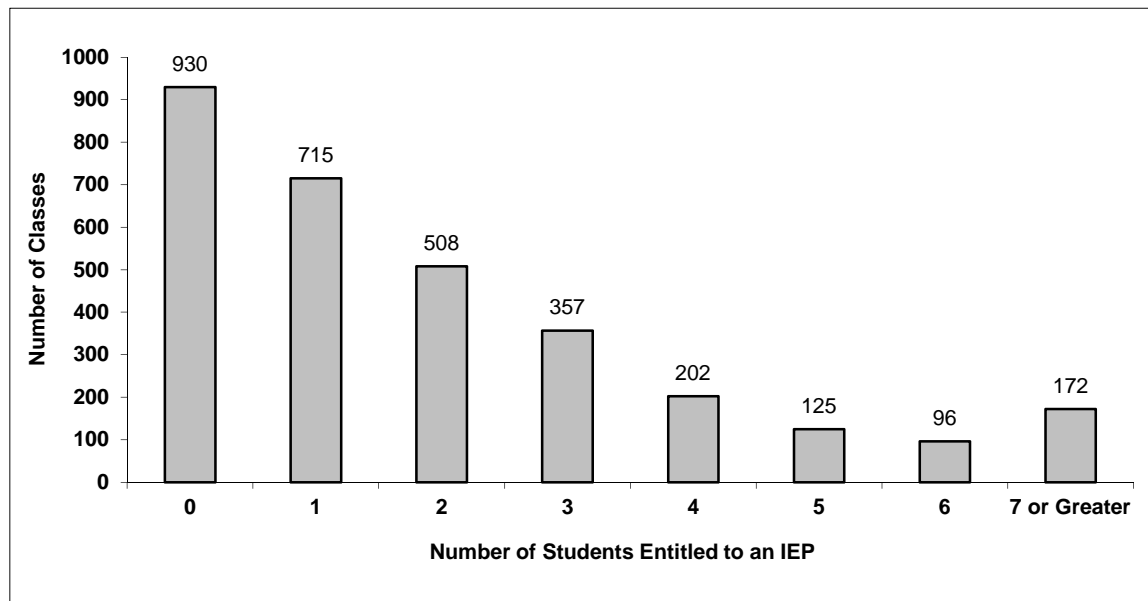
041 Burnaby

Source: Class size data collection (as of October 31) from BC public schools.

Grades K-3 - Number of Classes in District with 'X' Number of Students Entitled to an IEP



Grades 4-12 - Number of Classes in District with 'X' Number of Students Entitled to an IEP

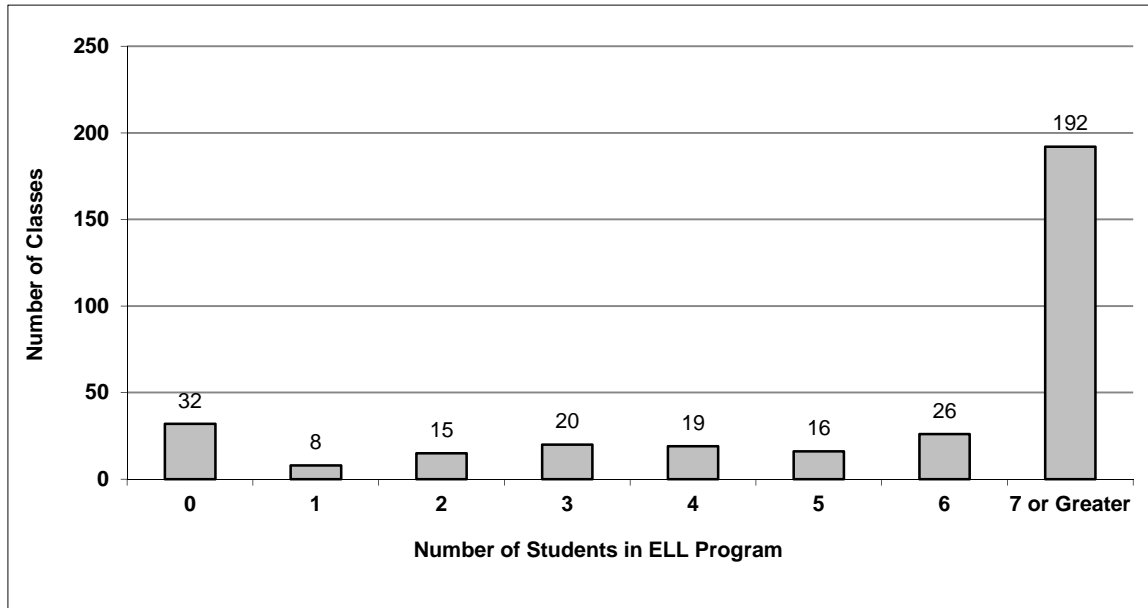


District - English Language Learners (ELL)

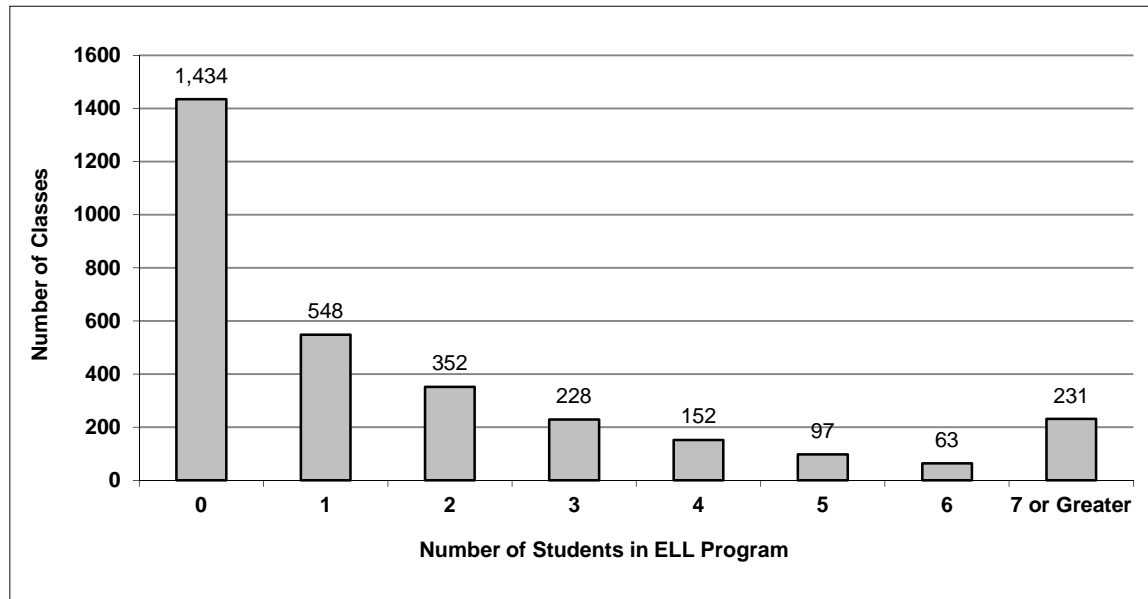
041 Burnaby

Source: Class size data collection (as of October 31) from BC public schools.

Grades K-3 - Number of Classes in District with 'X' Number of ELL



Grades 4-12 - Number of Classes in District with 'X' Number of ELL



041 Burnaby - Average Class Size by School

Source: Class size data collection (as of October 31) from BC public schools.

Ministry Code	School Name	Kindergarten	Grade 1 - 3	Grade 4 - 7	Grade 8 - 12
04141005	Alpha Secondary	-	-	-	24.1
04141015	Armstrong Elementary	19.0	20.5	26.6	-
04141016	Aubrey Elementary	20.6	20.5	27.1	-
04141017	Brantford Elementary	20.3	22.0	22.5	-
04141018	Brentwood Park Elementary	19.3	22.8	27.2	-
04141019	Buckingham Elementary	19.6	22.1	26.8	-
04141001	Burnaby Central Secondary	-	-	-	26.5
04141063	Burnaby Mountain Secondary	-	-	-	25.1
04141002	Burnaby North Secondary	-	-	-	26.5
04141062	Burnaby South Secondary	-	-	-	24.9
04141068	Byrne Creek Community School	-	-	-	24.0
04141020	Cameron Elementary	17.9	21.5	25.4	-
04141021	Capitol Hill Elementary	19.5	21.5	25.5	-
04141007	Cariboo Hill Secondary	-	-	-	20.9
04141022	Cascade Heights Elementary	20.1	22.4	26.7	-
04141023	Chaffey-Burke Elementary	17.7	21.2	25.7	-
04141024	Clinton Elementary	19.4	22.1	26.9	-
04141025	Confederation Park Elementary	20.4	21.4	25.4	-
04141026	Douglas Road Elementary	17.0	21.4	26.9	-
04141032	Ecole Inman Elementary	18.5	19.6	27.8	-
04141046	Ecole Seaforth Elementary	19.7	22.5	26.6	-
04141008	Edmonds Community	15.5	16.9	22.2	-
04141060	Forest Grove Elementary	19.2	19.7	24.2	-
04141029	Gilmore Community Elementary	20.0	21.8	26.4	-
04141030	Gilpin Elementary	19.3	22.2	25.5	-
04141031	Glenwood Elementary	19.0	19.3	23.3	-
04141033	Kitchener Elementary	19.4	21.4	25.9	-
04141034	Lakeview Elementary	18.0	21.2	28.8	-
04141035	Lochdale Community	19.6	22.6	24.4	-
04141036	Lyndhurst Elementary	20.0	19.1	20.9	-
04141037	Marlborough Elementary	20.2	23.2	27.1	-
04141038	Maywood Community School	20.0	20.8	26.6	-
04141056	Montecito Elementary	21.0	21.4	25.3	-
04141039	Morley Elementary	14.2	21.2	25.8	-
04141011	Moscrop Secondary	-	-	-	24.1
04141040	Nelson Elementary	20.6	22.7	28.3	-
04141041	Parkcrest Elementary	19.0	21.2	26.3	-
04141044	Rosser Elementary	19.0	20.0	22.8	-
04141047	Second Street Community	18.9	20.2	25.3	-
04141061	South Slope Elementary	19.7	20.5	27.0	-
04141048	Sperling Elementary	21.4	21.9	27.0	-
04141057	Stoney Creek Elementary	20.6	19.5	24.8	-
04141049	Stride Avenue Community School	18.5	22.2	27.4	-
04141050	Suncrest Elementary	20.4	21.1	23.2	-
04141065	Taylor Park Elementary	20.3	21.3	27.2	-
04141052	Twelfth Avenue Elementary	16.5	22.0	26.9	-
04141069	University Highlands Elementary	18.6	21.5	25.8	-
04141053	Westridge Elementary	20.9	21.6	23.6	-
04141054	Windsor Elementary	16.0	21.7	22.7	-

Glossary

Term	Definition / Notes
English Language Learners (ELL)	<ul style="list-style-type: none">• A program offered to students whose primary language(s) is/are other than English, and who may require additional services.
Grade	<ul style="list-style-type: none">• The assigned grade of a student on October 31.
K	<ul style="list-style-type: none">• Kindergarten
Number of Students	<ul style="list-style-type: none">• Student population is calculated by headcount.
Student	<ul style="list-style-type: none">• A person enrolled in a BC school. Student populations are calculated by headcount. Students include all adult and school-aged persons who are working toward a certificate of graduation.
Student Entitled to an Individual Education Plan	<ul style="list-style-type: none">• A student for whom an Individual Education Plan (IEP) must be designed under the Individual Education Plan order, Ministerial Order 638/95.