

# Overview of Class Size and Composition in British Columbia Public Schools 2014/15

## School District 034 Abbotsford

These class size data are current as of October 31, 2014 and have been verified by school districts.



Ministry of  
Education

December 2014  
Analysis and Reporting Unit

---

**PLEASE NOTE**

The Ministry makes small and continuous improvements to the quality of its data. Sometimes these changes result in differences from previously published reports. The data in this report are the most accurate data available at time of publication.

Ministry reports are available at <http://www.bced.gov.bc.ca/reporting/>

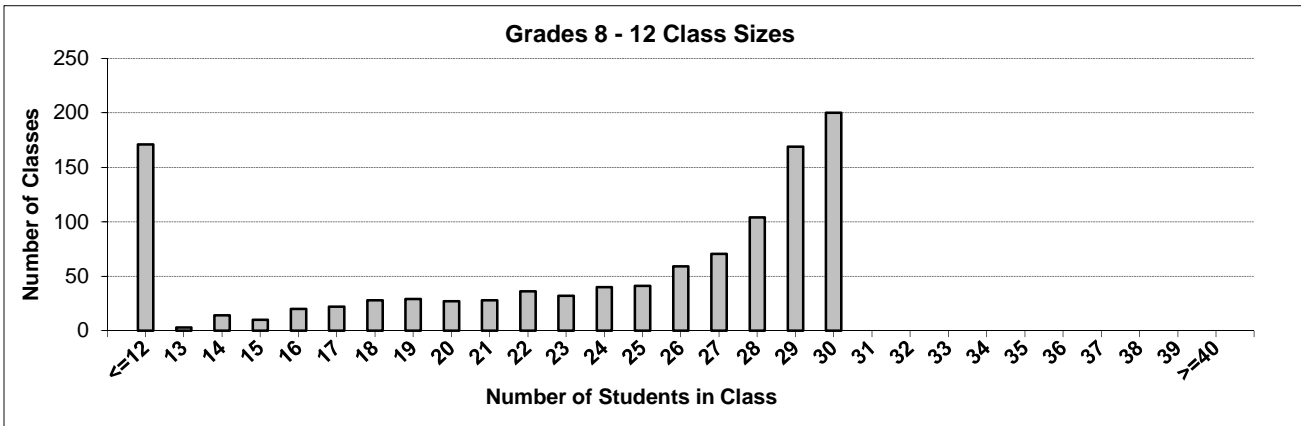
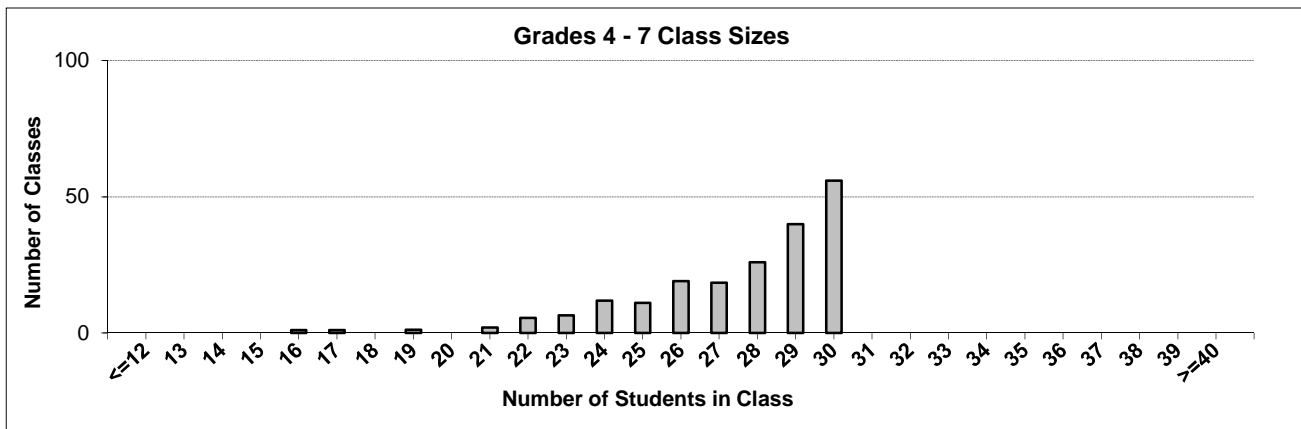
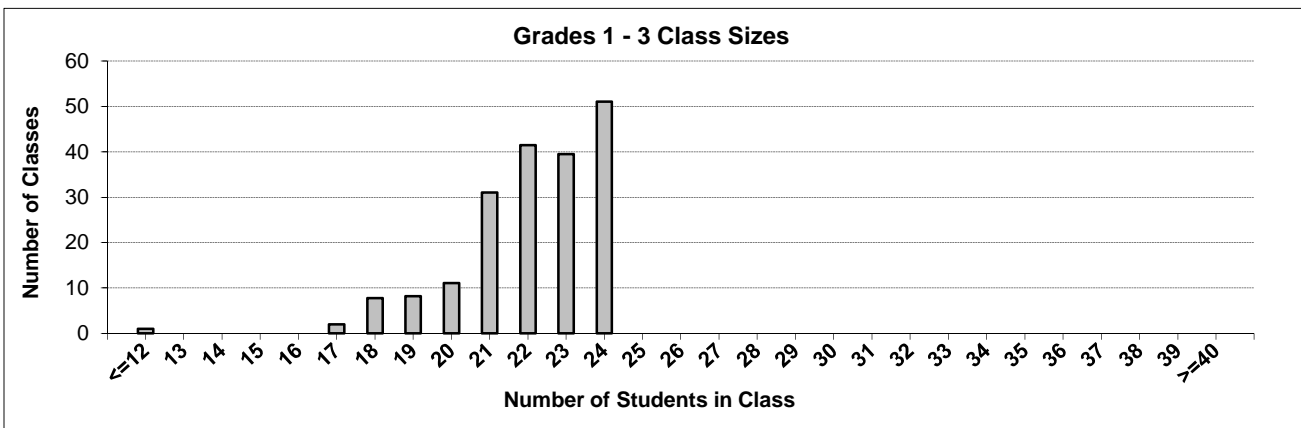
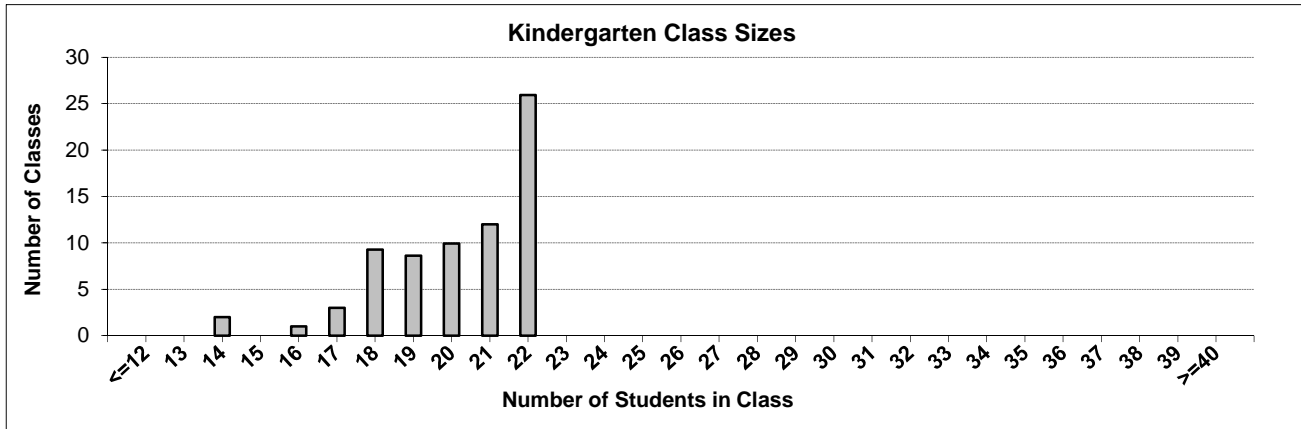
Contact the Analysis and Reporting Unit at [educ.reportingunit@gov.bc.ca](mailto:educ.reportingunit@gov.bc.ca)

---

# District Class Sizes

## 034 Abbotsford

Source: Class size data collection (as of October 31) from BC public schools.



---

## District - Average Class Size

---

### 034 Abbotsford

Source: Class size data collection (as of October 31) from BC public schools.

District - Average Class Size	Kindergarten	Grade 1 - 3	Grade 4 - 7	Grade 8 - 12
	20.2	22.0	27.5	22.5

Province - Average Class Size	Kindergarten	Grade 1 - 3	Grade 4 - 7	Grade 8 - 12
	19.5	21.5	25.6	23.2

Number of Reported Classes with Assigned Education Assistants	600
---	-----

Number of Reported Schools in District	45
--	----

Number of Reported Classes in District	1,568
--	-------

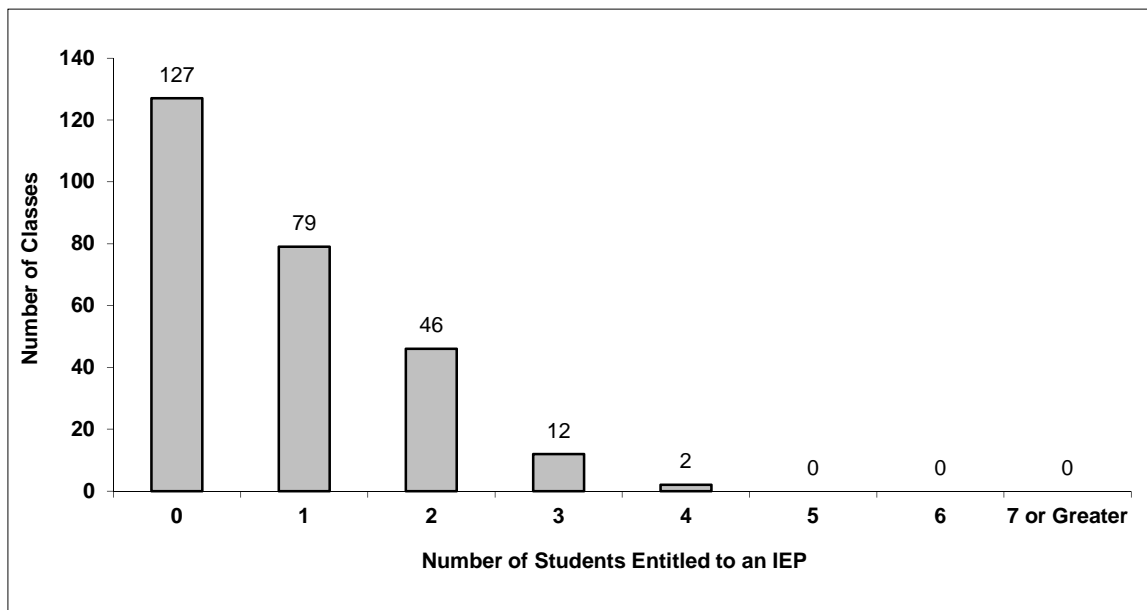
Number of Reported Classes in District with more than 30 Students	0
---	---

## District - Students Entitled to an Individual Education Plan (IEP)

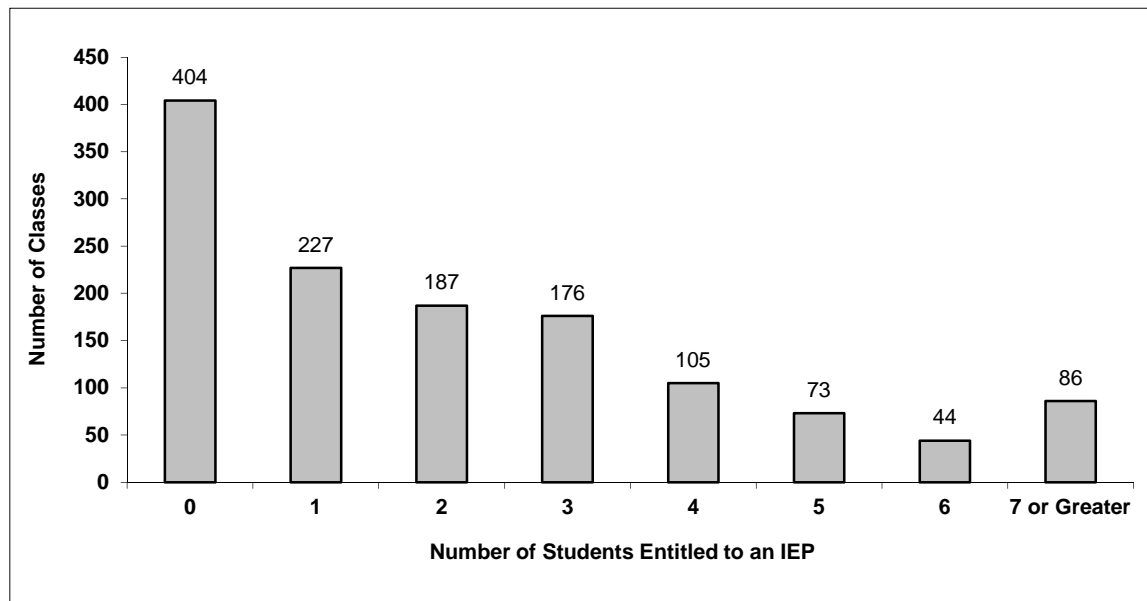
### 034 Abbotsford

Source: Class size data collection (as of October 31) from BC public schools.

Grades K-3 - Number of Classes in District with 'X' Number of Students Entitled to an IEP



Grades 4-12 - Number of Classes in District with 'X' Number of Students Entitled to an IEP

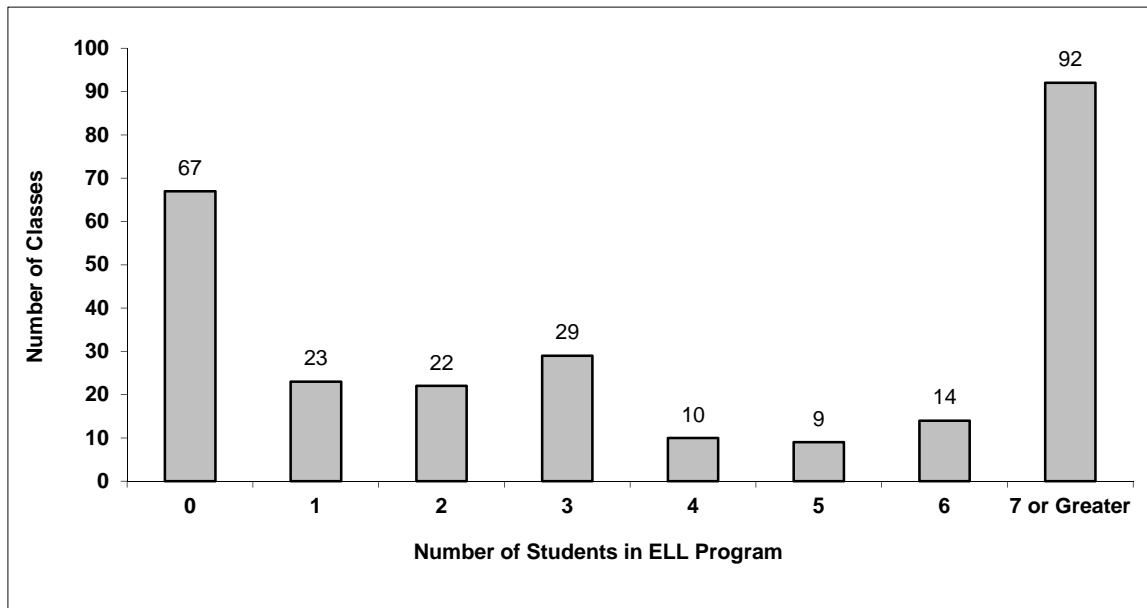


## District - English Language Learners (ELL)

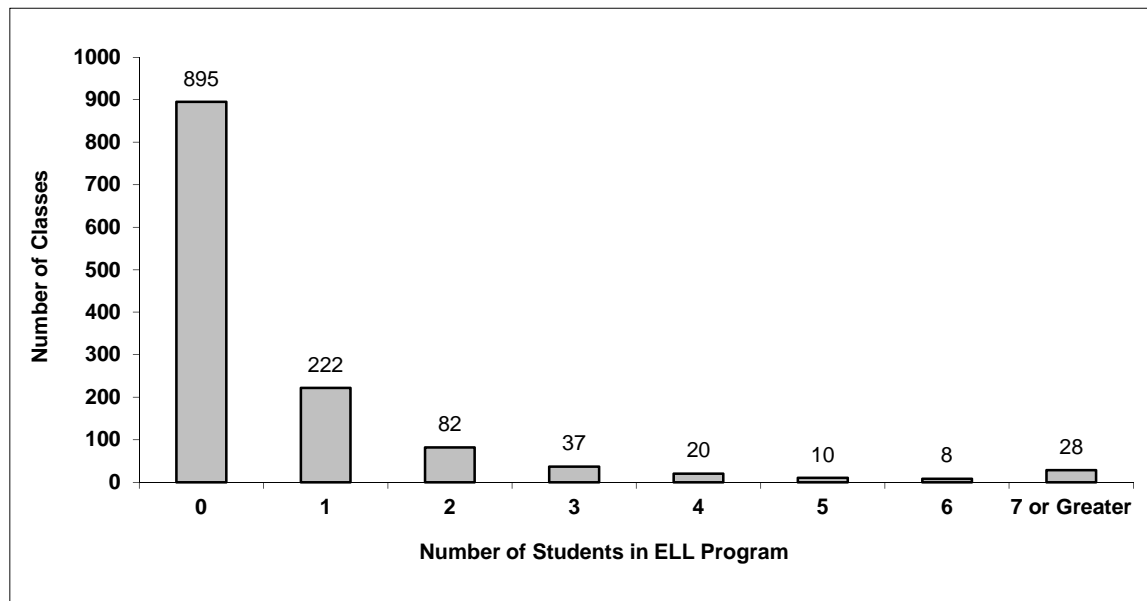
### 034 Abbotsford

Source: Class size data collection (as of October 31) from BC public schools.

Grades K-3 - Number of Classes in District with 'X' Number of ELL



Grades 4-12 - Number of Classes in District with 'X' Number of ELL



## 034 Abbotsford - Average Class Size by School

Source: Class size data collection (as of October 31) from BC public schools.

Ministry Code	School Name	Kindergarten	Grade 1 - 3	Grade 4 - 7	Grade 8 - 12
03434005	ASIA - North Poplar	22.0	23.0	26.7	-
03434062	ASIA - Sumas Mountain 6-9	-	-	28.0	21.5
03434064	ASIA - Sumas Mountain 9-12	-	-	-	17.9
03434025	Abbotsford Middle School	-	-	29.4	27.7
03434022	Abbotsford Senior Secondary School	-	-	-	21.3
03434020	Abbotsford Traditional Middle School	-	-	28.1	29.0
03434061	Abbotsford Traditional Senior Secondary	-	-	-	24.5
03434026	Aberdeen Elementary	22.0	21.0	24.0	-
03434021	Alexander Elementary	22.0	16.0	25.0	-
03434035	Auguston Traditional Elementary	21.0	22.1	28.3	-
03434023	Barrowtown Elementary	19.0	17.3	17.4	-
03434049	Blue Jay Elementary	21.7	22.8	28.2	-
03434011	Bradner Elementary	16.0	23.1	26.8	-
03434037	Centennial Park Elementary	19.0	20.4	22.4	-
03434047	Chief Dan George Middle	-	-	25.4	29.0
03434060	Clayburn Middle School	-	-	29.3	28.4
03434018	Clearbrook Elementary	19.6	23.0	26.7	-
03434057	Colleen and Gordie Howe Middle School	-	-	28.3	29.2
03434056	Dave Kandal Elementary	19.9	22.8	29.3	-
03434043	Dormick Park Elementary	21.3	20.5	24.0	-
03434055	Dr Roberta Bondar Elementary	19.5	21.3	27.4	-
03434045	Dr Thomas A Swift Elementary	21.5	21.9	28.3	-
03434058	Eugene Reimer Middle School	-	-	28.1	28.6
03434028	Godson Elementary	17.7	21.1	26.5	-
03434051	Harry Sayers Elementary	22.0	22.6	28.4	-
03434031	Jackson Elementary	19.7	21.0	26.5	-
03434044	John Maclure Community School	19.0	21.2	23.4	-
03434019	King Traditional Elementary	21.7	22.5	28.9	-
03434033	Margaret Stenersen Elementary	21.5	23.3	26.7	-
03434059	Matsqui Elementary	21.0	22.0	24.0	-
03434027	McMillan Elementary	21.0	23.2	29.8	-
03434053	Mountain Elementary	21.2	23.3	27.6	-
03434003	Mt Lehman Elementary	22.0	22.6	25.3	-
03434048	Prince Charles Elementary	18.4	22.2	29.7	-
03434052	Rick Hansen Secondary	-	-	-	21.3
03434054	Robert Bateman Secondary	-	-	-	21.2
03434032	Ross Elementary	18.9	22.4	26.0	-
03434050	Sandy Hill Elementary	20.2	22.5	27.9	-
03434016	South Poplar Traditional Elementary	22.0	23.7	25.0	-
03434036	Ten Broeck Elementary	19.3	20.2	28.1	-
03434046	Terry Fox Elementary	17.7	21.3	29.3	-
03434007	Upper Sumas Elementary	14.0	24.0	29.4	-
03434041	W J Mouat Secondary	-	-	-	24.2
03434042	William A. Fraser Middle School	-	-	29.3	28.7
03434038	Yale Secondary	-	-	-	22.4

---

## Glossary

---

Term	Definition / Notes
<b>English Language Learners (ELL)</b>	• A program offered to students whose primary language(s) is/are other than English, and who may require additional services.
<b>Grade</b>	• The assigned grade of a student on October 31.
<b>K</b>	• Kindergarten
<b>Number of Students</b>	• Student population is calculated by headcount.
<b>Student</b>	• A person enrolled in a BC school. Student populations are calculated by headcount. Students include all adult and school-aged persons who are working toward a certificate of graduation.
<b>Student Entitled to an Individual Education Plan</b>	• A student for whom an Individual Education Plan (IEP) must be designed under the Individual Education Plan order, Ministerial Order 638/95.