

# Overview of Class Size and Composition in British Columbia Public Schools 2014/15

## School District 033 Chilliwack

These class size data are current as of October 31, 2014 and have been verified by school districts.



Ministry of  
Education

December 2014  
Analysis and Reporting Unit

---

#### **PLEASE NOTE**

The Ministry makes small and continuous improvements to the quality of its data. Sometimes these changes result in differences from previously published reports. The data in this report are the most accurate data available at time of publication.

Ministry reports are available at <http://www.bced.gov.bc.ca/reporting/>

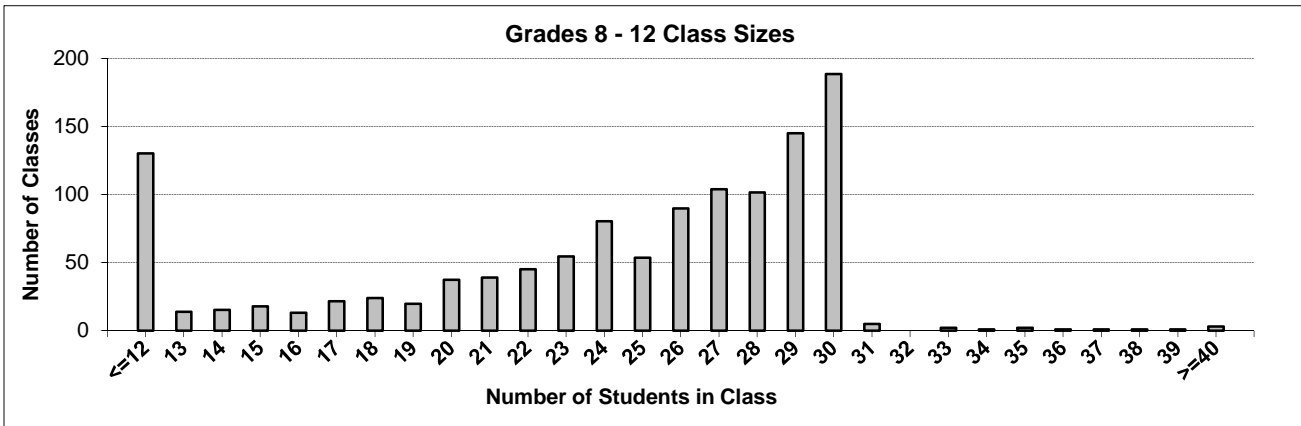
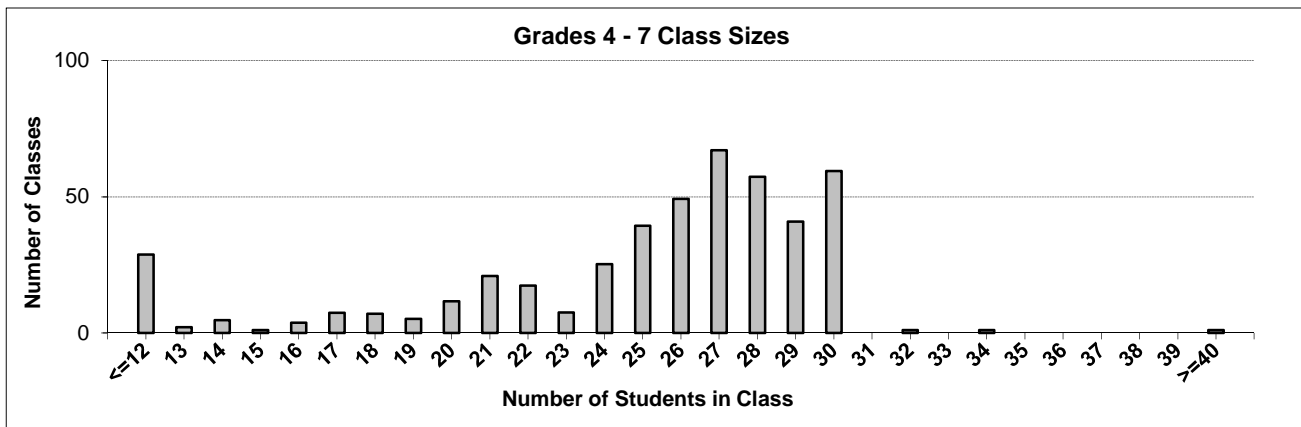
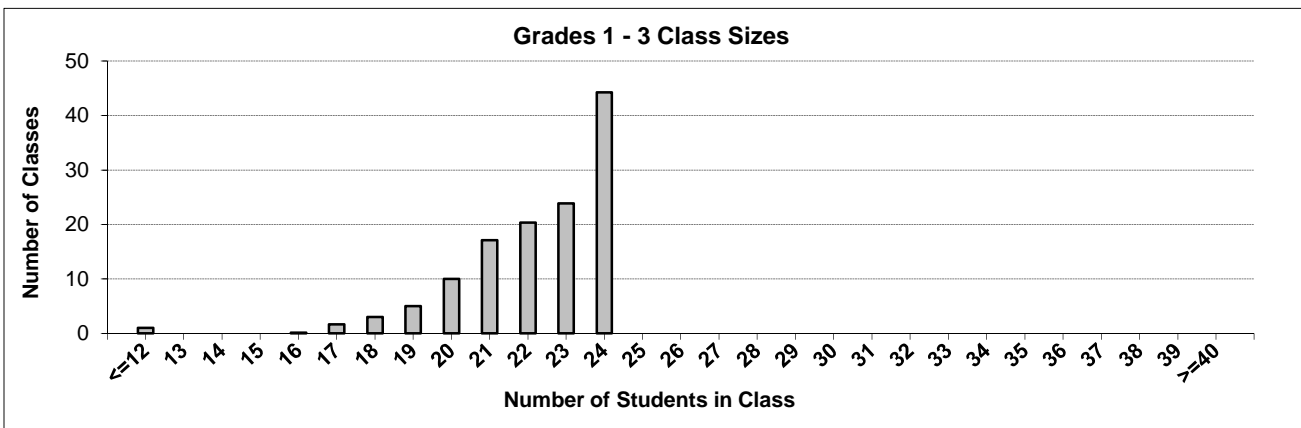
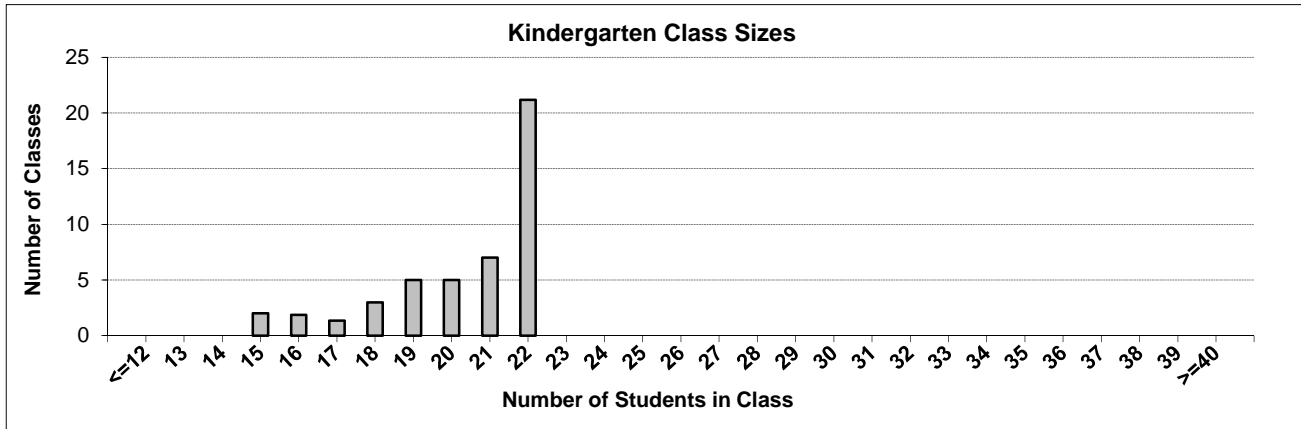
Contact the Analysis and Reporting Unit at [educ.reportingunit@gov.bc.ca](mailto:educ.reportingunit@gov.bc.ca)

---

# District Class Sizes

## 033 Chilliwack

Source: Class size data collection (as of October 31) from BC public schools.



---

## District - Average Class Size

---

### 033 Chilliwack

Source: Class size data collection (as of October 31) from BC public schools.

District - Average Class Size	Kindergarten	Grade 1 - 3	Grade 4 - 7	Grade 8 - 12
	20.4	22.2	24.5	23.4

Province - Average Class Size	Kindergarten	Grade 1 - 3	Grade 4 - 7	Grade 8 - 12
	19.5	21.5	25.6	23.2

Number of Reported Classes with Assigned Education Assistants	527
---	-----

Number of Reported Schools in District	27
--	----

Number of Reported Classes in District	1,844
--	-------

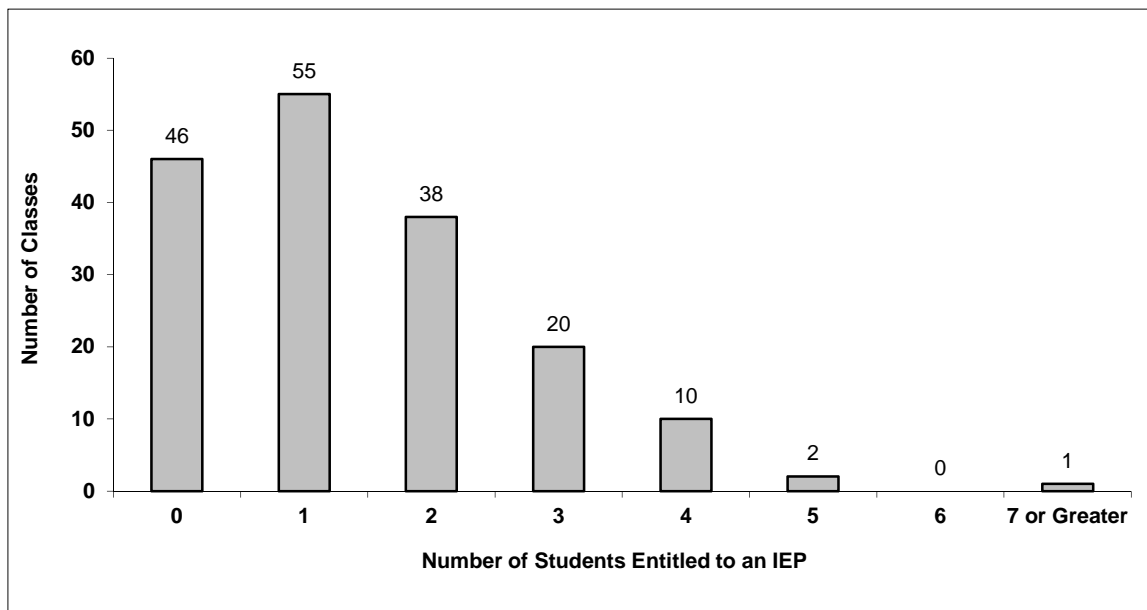
Number of Reported Classes in District with more than 30 Students	20
---	----

## District - Students Entitled to an Individual Education Plan (IEP)

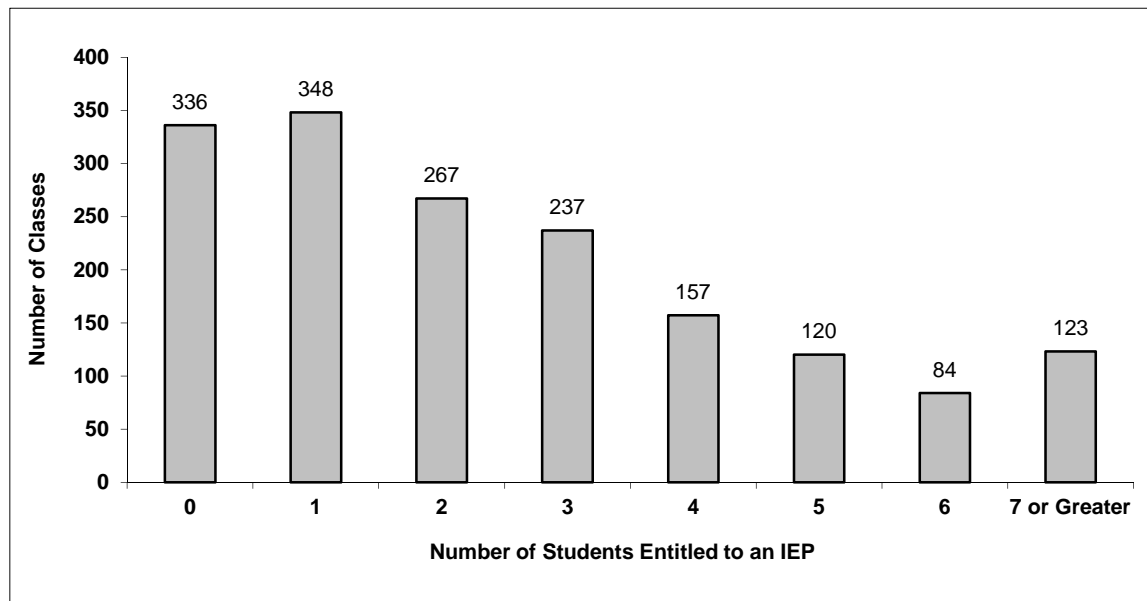
### 033 Chilliwack

Source: Class size data collection (as of October 31) from BC public schools.

Grades K-3 - Number of Classes in District with 'X' Number of Students Entitled to an IEP



Grades 4-12 - Number of Classes in District with 'X' Number of Students Entitled to an IEP

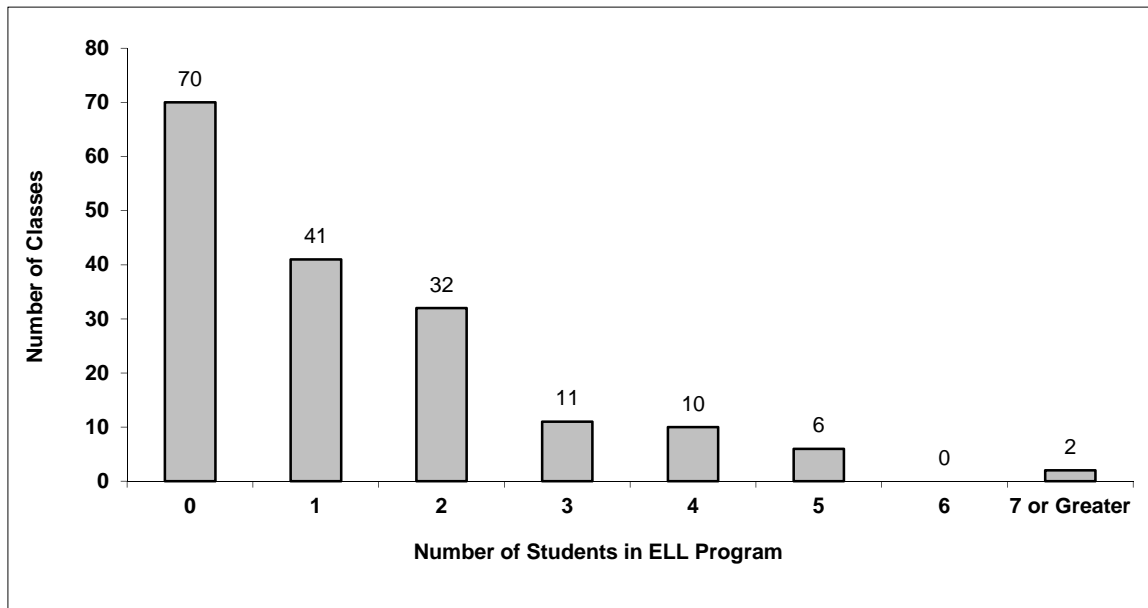


# District - English Language Learners (ELL)

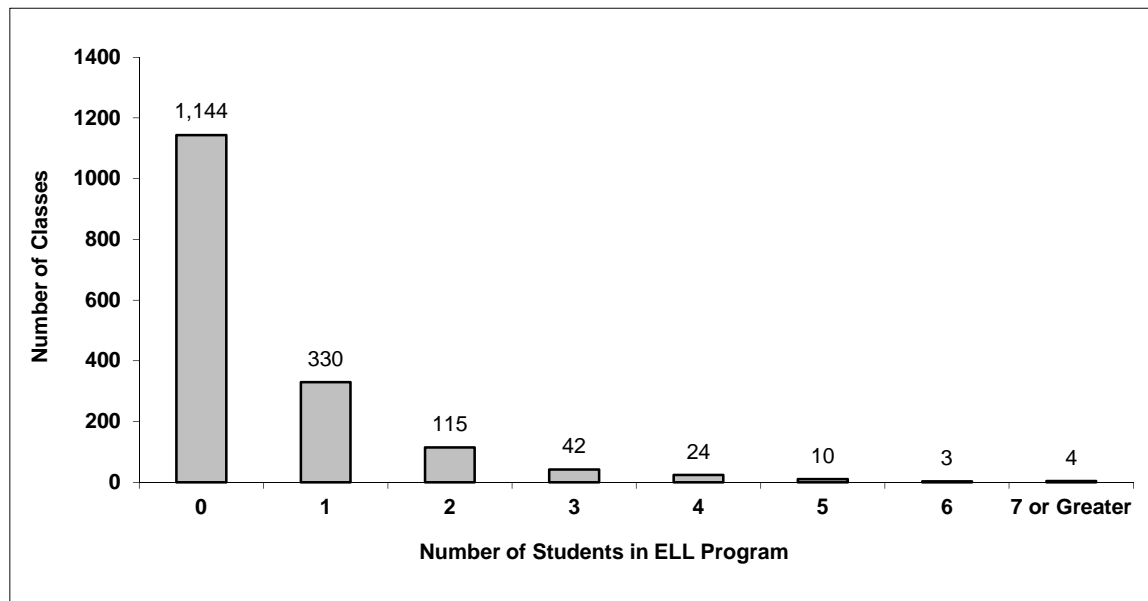
## 033 Chilliwack

Source: Class size data collection (as of October 31) from BC public schools.

Grades K-3 - Number of Classes in District with 'X' Number of ELL



Grades 4-12 - Number of Classes in District with 'X' Number of ELL



## 033 Chilliwack - Average Class Size by School

Source: Class size data collection (as of October 31) from BC public schools.

Ministry Code	School Name	Kindergarten	Grade 1 - 3	Grade 4 - 7	Grade 8 - 12
03333033	A D Rundle Middle School	-	-	25.6	23.8
03333019	Bernard Elementary	21.0	19.4	23.0	-
03333013	Cheam Elementary	15.3	22.4	26.0	-
03333008	Chilliwack Central Elementary Community	21.5	22.4	27.5	-
03333004	Chilliwack Middle School	-	-	22.2	22.7
03333012	Chilliwack Secondary	-	-	-	22.4
03333009	Cultus Lake Community School	17.0	22.7	27.5	-
03333010	East Chilliwack Elementary	22.0	22.6	28.0	-
03333039	Evans Elementary	22.0	21.2	28.5	-
03333030	F G Leary Fine Arts Elementary	22.0	23.2	28.2	-
03333043	GW Graham Middle Secondary	-	-	24.4	21.9
03333042	Greendale Elementary	18.5	20.0	21.3	-
03333016	Little Mountain Elementary	22.0	20.1	29.4	-
03333028	McCammon Traditional Elementary	17.0	22.5	25.8	-
03333038	Mount Slesse Middle School	-	-	24.0	23.9
03333040	Promontory Heights Community Elementary	20.0	24.0	29.8	-
03333024	Robertson Elementary	20.5	20.5	25.6	-
03333023	Rosedale Traditional Community	22.0	23.5	27.0	23.9
03333005	Sardis Elementary	21.0	23.5	28.5	-
03333018	Sardis Secondary	-	-	-	25.8
03333003	Strathcona Elementary	21.3	21.5	28.3	-
03333035	Tyson Elementary	21.0	21.7	26.7	-
03333029	Unsworth Elementary	21.3	22.6	27.7	-
03333011	Vedder Elementary	22.0	22.9	28.9	-
03333034	Vedder Middle School	-	-	22.2	24.4
03333017	Watson Elementary	18.5	22.1	28.7	-
03333015	Yarrow Community School	22.0	23.7	28.5	-

---

## Glossary

---

Term	Definition / Notes
English Language Learners (ELL)	<ul style="list-style-type: none"><li>• A program offered to students whose primary language(s) is/are other than English, and who may require additional services.</li></ul>
Grade	<ul style="list-style-type: none"><li>• The assigned grade of a student on October 31.</li></ul>
K	<ul style="list-style-type: none"><li>• Kindergarten</li></ul>
Number of Students	<ul style="list-style-type: none"><li>• Student population is calculated by headcount.</li></ul>
Student	<ul style="list-style-type: none"><li>• A person enrolled in a BC school. Student populations are calculated by headcount. Students include all adult and school-aged persons who are working toward a certificate of graduation.</li></ul>
Student Entitled to an Individual Education Plan	<ul style="list-style-type: none"><li>• A student for whom an Individual Education Plan (IEP) must be designed under the Individual Education Plan order, Ministerial Order 638/95.</li></ul>