

# Overview of Class Size and Composition in British Columbia Public Schools 2014/15

## School District 020 Kootenay-Columbia

These class size data are current as of October 31, 2014 and have been verified by school districts.

---

**PLEASE NOTE**

The Ministry makes small and continuous improvements to the quality of its data. Sometimes these changes result in differences from previously published reports. The data in this report are the most accurate data available at time of publication.

Ministry reports are available at <http://www.bced.gov.bc.ca/reporting/>

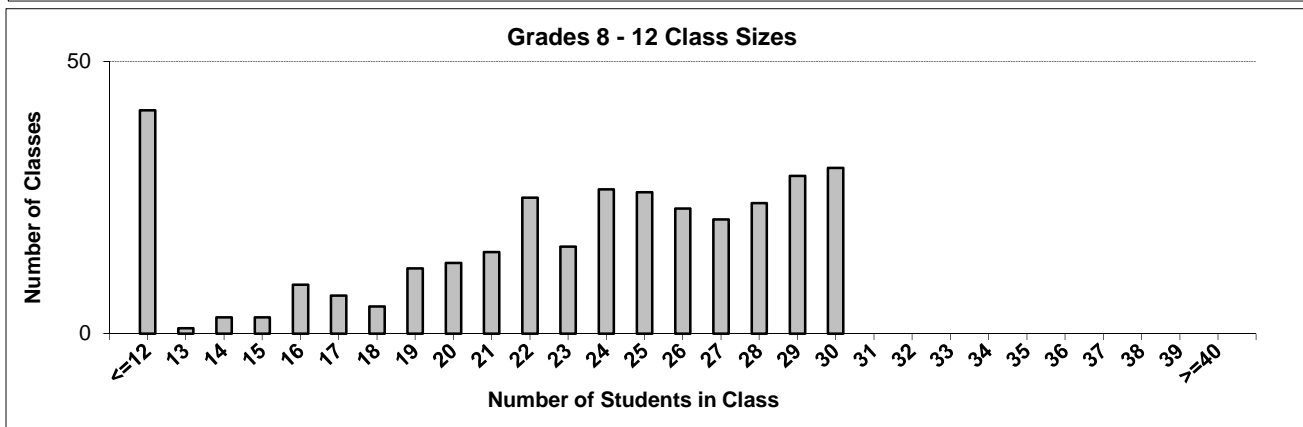
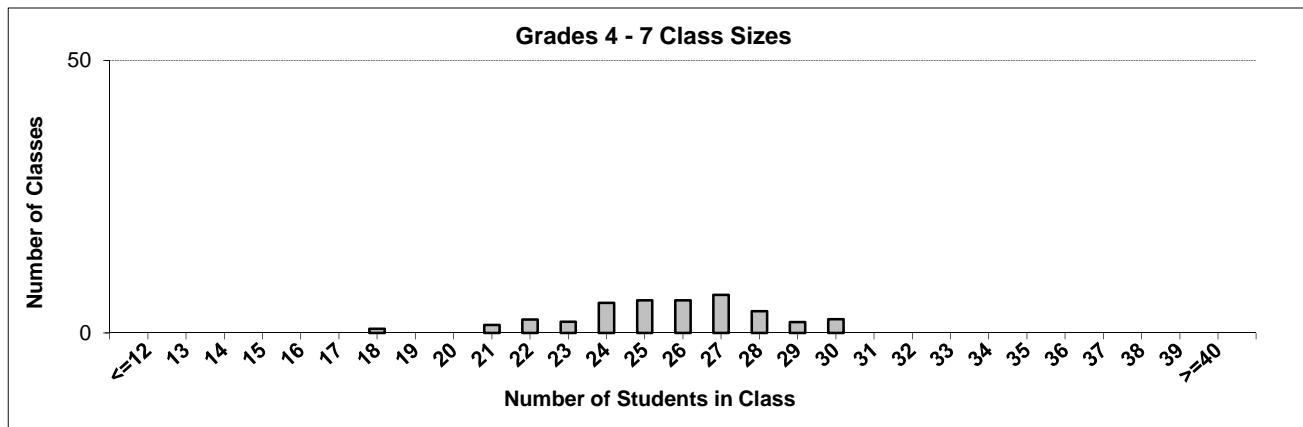
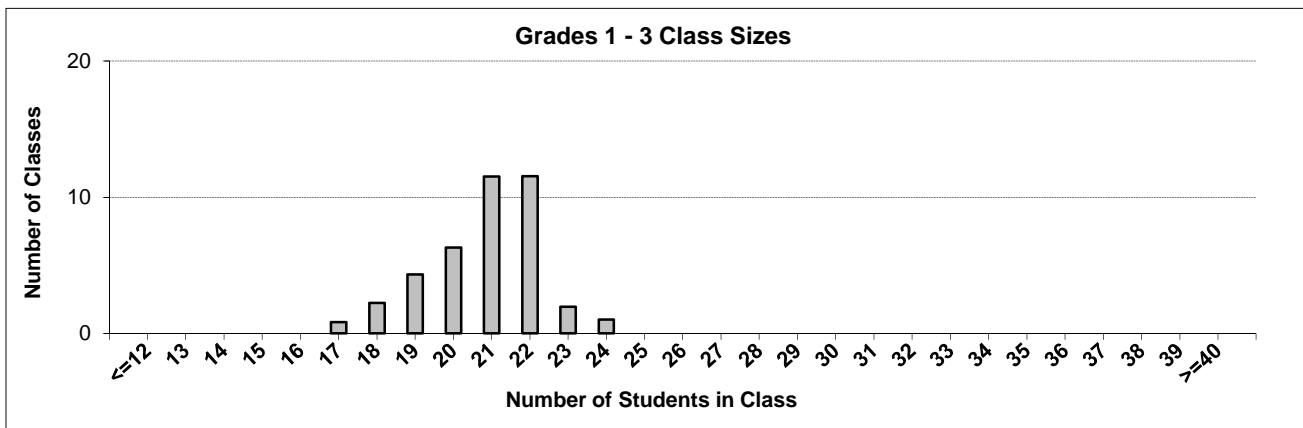
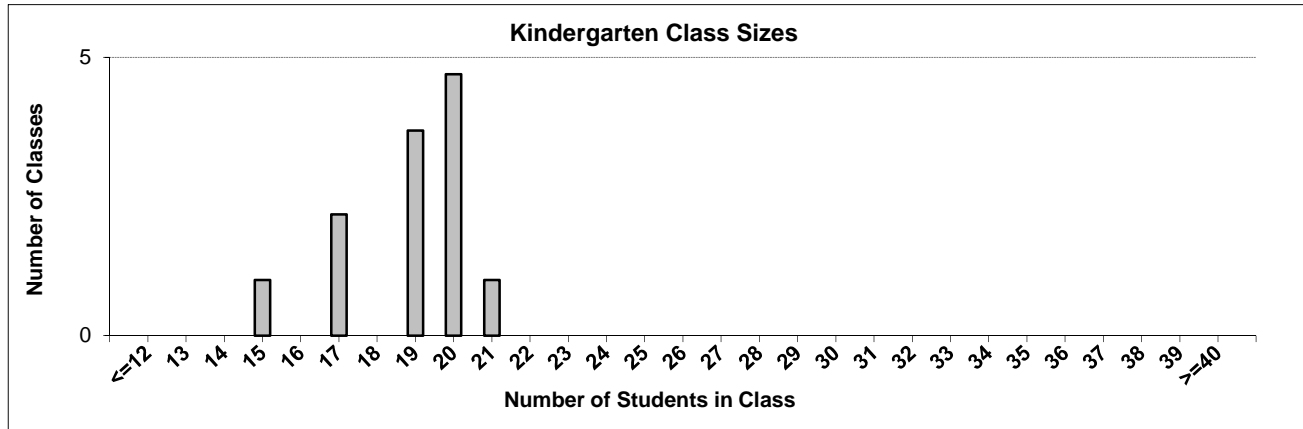
Contact the Analysis and Reporting Unit at [educ.reportingunit@gov.bc.ca](mailto:educ.reportingunit@gov.bc.ca)

---

# District Class Sizes

## 020 Kootenay-Columbia

Source: Class size data collection (as of October 31) from BC public schools.



---

## District - Average Class Size

---

### 020 Kootenay-Columbia

Source: Class size data collection (as of October 31) from BC public schools.

District - Average Class Size	Kindergarten	Grade 1 - 3	Grade 4 - 7	Grade 8 - 12
	18.9	20.8	25.6	21.8

Province - Average Class Size	Kindergarten	Grade 1 - 3	Grade 4 - 7	Grade 8 - 12
	19.5	21.5	25.6	23.2

Number of Reported Classes with Assigned Education Assistants	148
---	-----

Number of Reported Schools in District	9
--	---

Number of Reported Classes in District	422
--	-----

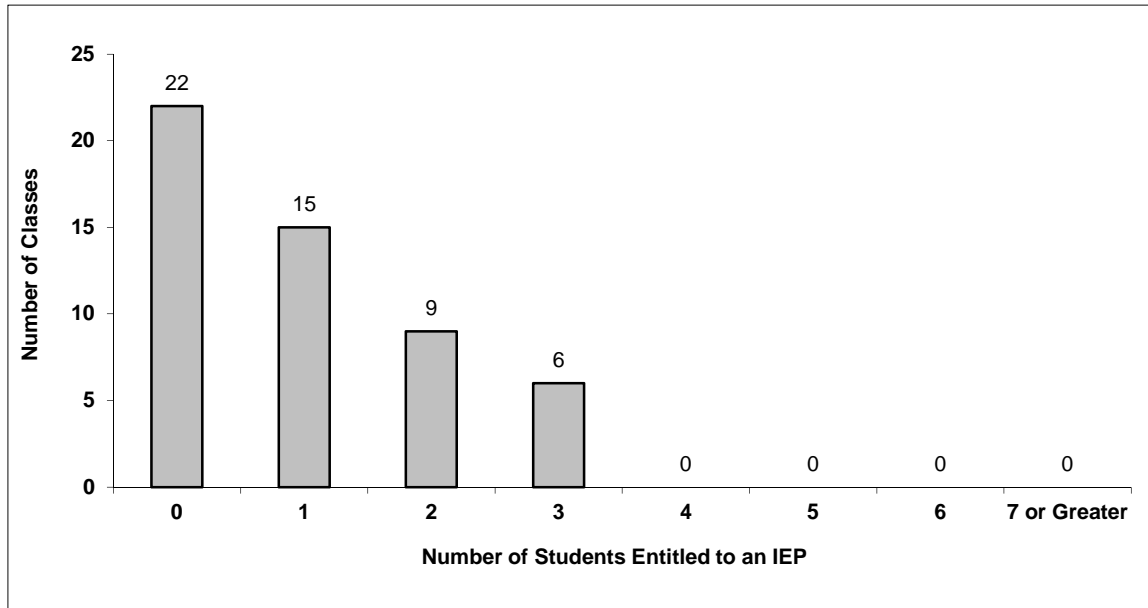
Number of Reported Classes in District with more than 30 Students	0
---	---

# District - Students Entitled to an Individual Education Plan (IEP)

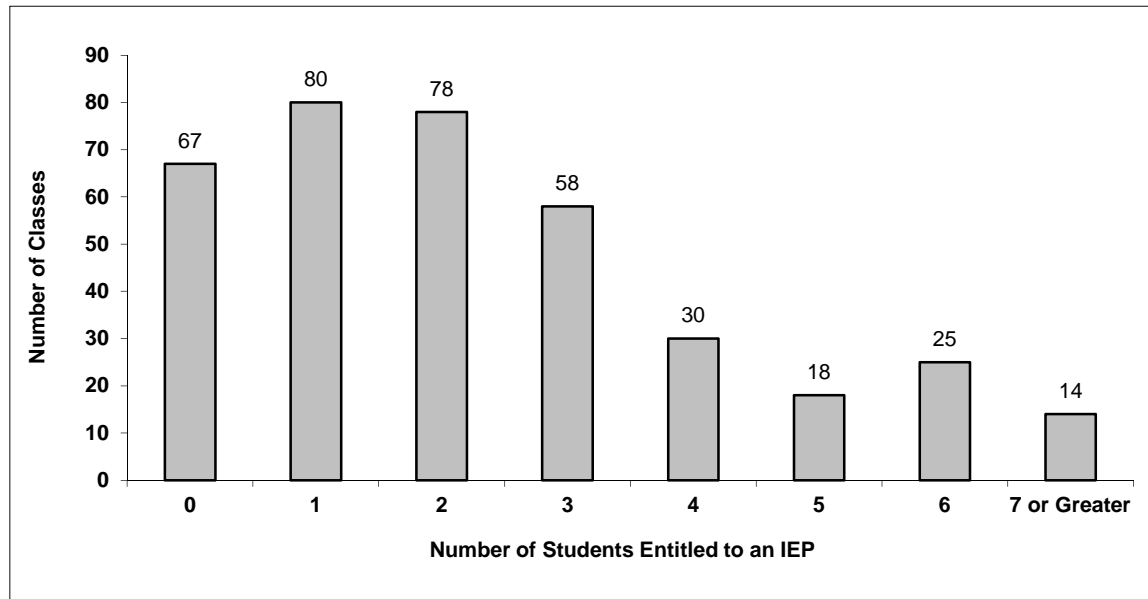
## 020 Kootenay-Columbia

Source: Class size data collection (as of October 31) from BC public schools.

Grades K-3 - Number of Classes in District with 'X' Number of Students Entitled to an IEP



Grades 4-12 - Number of Classes in District with 'X' Number of Students Entitled to an IEP

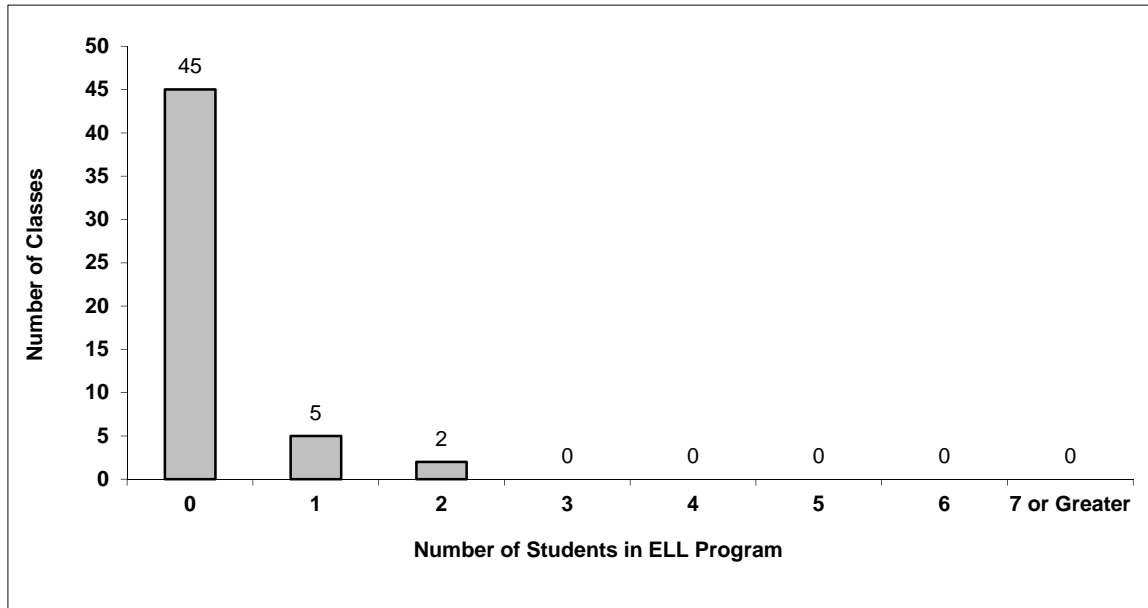


# District - English Language Learners (ELL)

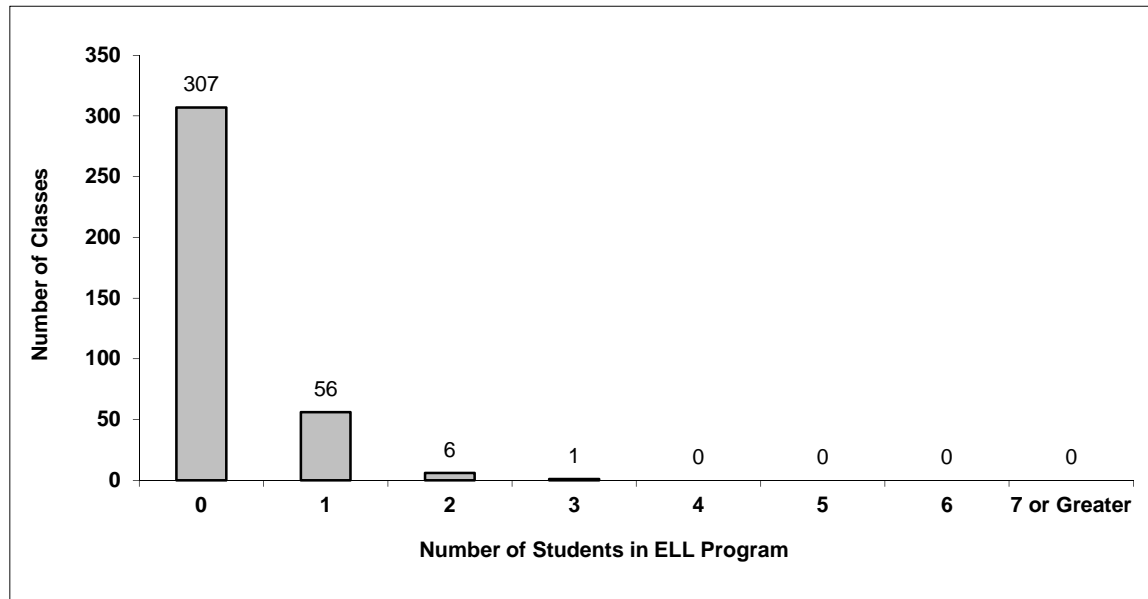
## 020 Kootenay-Columbia

Source: Class size data collection (as of October 31) from BC public schools.

Grades K-3 - Number of Classes in District with 'X' Number of ELL



Grades 4-12 - Number of Classes in District with 'X' Number of ELL



## 020 Kootenay-Columbia - Average Class Size by School

Source: Class size data collection (as of October 31) from BC public schools.

Ministry Code	School Name	Kindergarten	Grade 1 - 3	Grade 4 - 7	Grade 8 - 12
02011005	Fruitvale Elementary	19.5	21.4	24.0	-
02011015	Glenmerry Elementary	18.5	20.4	25.5	-
02011012	J Lloyd Crowe Secondary	-	-	-	22.6
02011009	James L Webster Elementary	20.7	20.8	25.2	-
02009006	Kinnaird Elementary	19.0	20.7	27.3	-
02020021	Robson Community School	15.3	18.4	22.2	-
02011014	Rossland Summit School	19.6	21.6	27.0	19.7
02009010	Stanley Humphries Secondary	-	-	-	20.9
02009011	Twin Rivers Elementary	18.7	21.5	26.3	-

---

## Glossary

---

Term	Definition / Notes
<b>English Language Learners (ELL)</b>	• A program offered to students whose primary language(s) is/are other than English, and who may require additional services.
<b>Grade</b>	• The assigned grade of a student on October 31.
<b>K</b>	• Kindergarten
<b>Number of Students</b>	• Student population is calculated by headcount.
<b>Student</b>	• A person enrolled in a BC school. Student populations are calculated by headcount. Students include all adult and school-aged persons who are working toward a certificate of graduation.
<b>Student Entitled to an Individual Education Plan</b>	• A student for whom an Individual Education Plan (IEP) must be designed under the Individual Education Plan order, Ministerial Order 638/95.