

# Overview of Class Size and Composition in British Columbia Public Schools 2014/15

## School District 005 Southeast Kootenay

These class size data are current as of October 31, 2014 and have been verified by school districts.

---

**PLEASE NOTE**

The Ministry makes small and continuous improvements to the quality of its data. Sometimes these changes result in differences from previously published reports. The data in this report are the most accurate data available at time of publication.

Ministry reports are available at <http://www.bced.gov.bc.ca/reporting/>

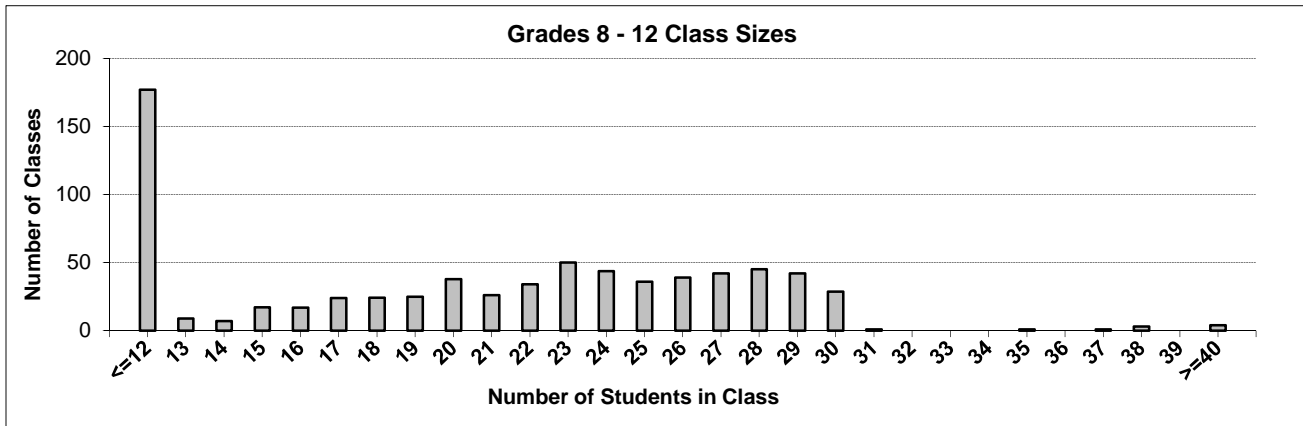
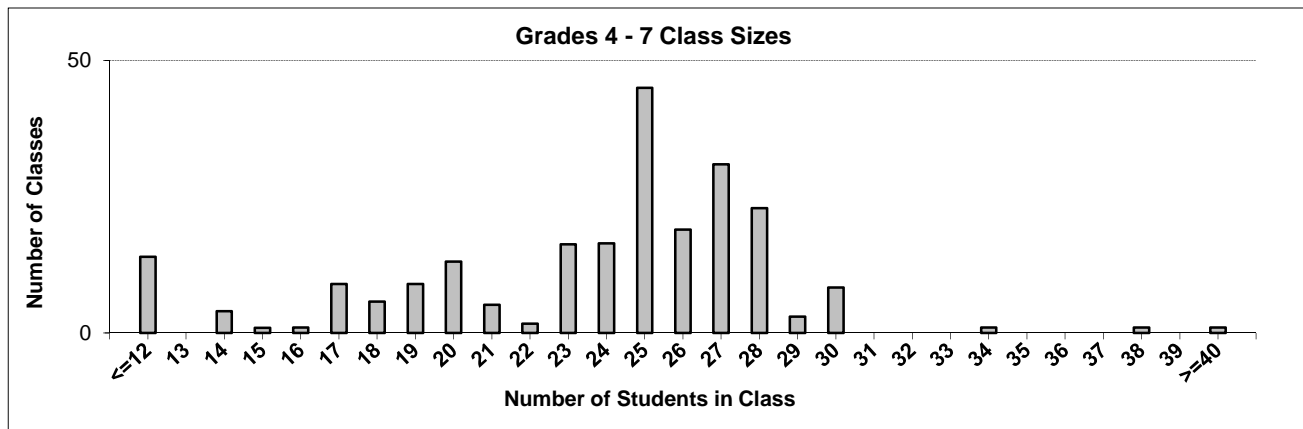
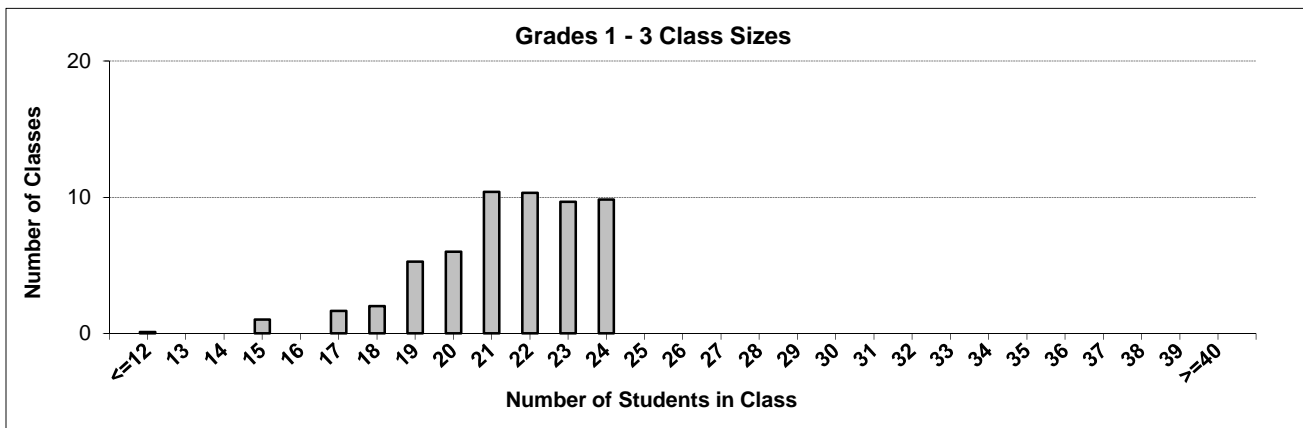
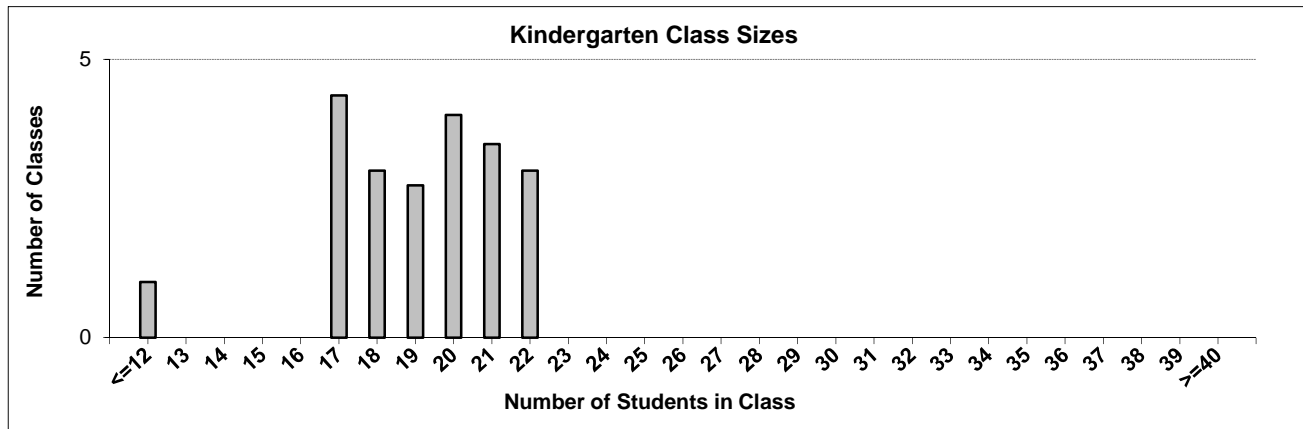
Contact the Analysis and Reporting Unit at [educ.reportingunit@gov.bc.ca](mailto:educ.reportingunit@gov.bc.ca)

---

# District Class Sizes

## 005 Southeast Kootenay

Source: Class size data collection (as of October 31) from BC public schools.



---

## District - Average Class Size

---

### 005 Southeast Kootenay

Source: Class size data collection (as of October 31) from BC public schools.

District - Average Class Size	Kindergarten	Grade 1 - 3	Grade 4 - 7	Grade 8 - 12
	19.1	21.4	23.5	19.3

Province - Average Class Size	Kindergarten	Grade 1 - 3	Grade 4 - 7	Grade 8 - 12
	19.5	21.5	25.6	23.2

Number of Reported Classes with Assigned Education Assistants	395
---	-----

Number of Reported Schools in District	17
--	----

Number of Reported Classes in District	1,041
--	-------

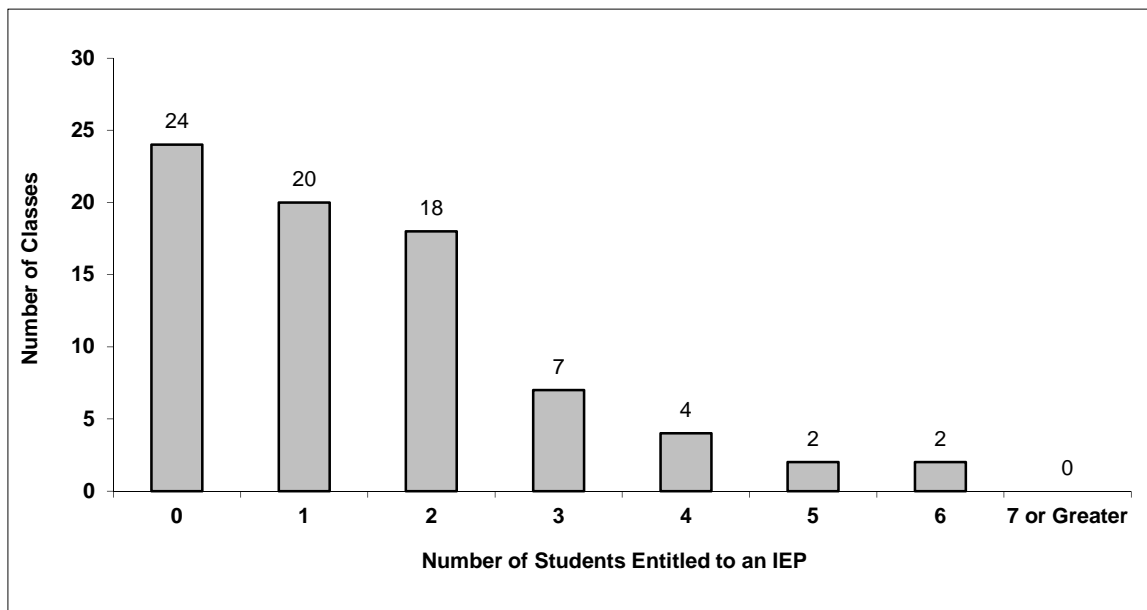
Number of Reported Classes in District with more than 30 Students	13
---	----

# District - Students Entitled to an Individual Education Plan (IEP)

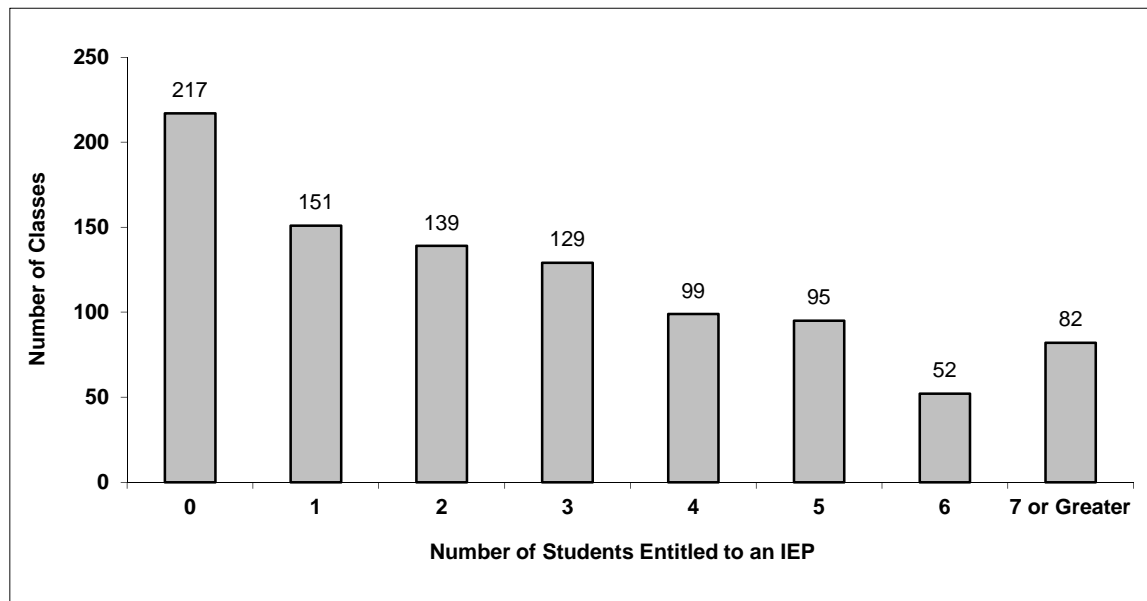
## 005 Southeast Kootenay

Source: Class size data collection (as of October 31) from BC public schools.

Grades K-3 - Number of Classes in District with 'X' Number of Students Entitled to an IEP



Grades 4-12 - Number of Classes in District with 'X' Number of Students Entitled to an IEP

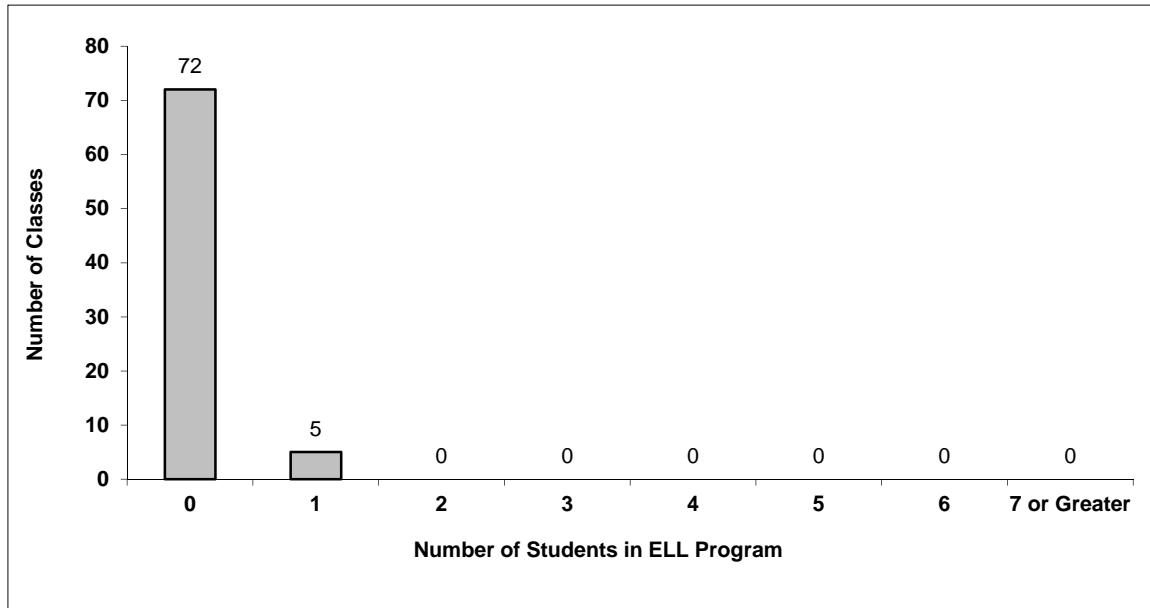


# District - English Language Learners (ELL)

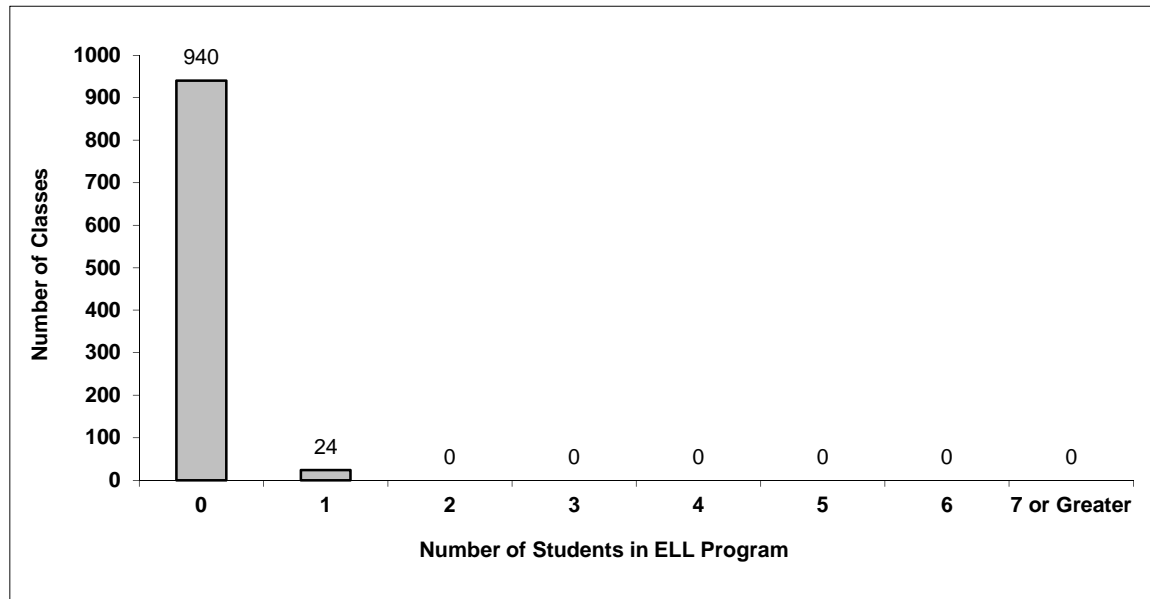
## 005 Southeast Kootenay

Source: Class size data collection (as of October 31) from BC public schools.

Grades K-3 - Number of Classes in District with 'X' Number of ELL



Grades 4-12 - Number of Classes in District with 'X' Number of ELL



## 005 Southeast Kootenay - Average Class Size by School

Source: Class size data collection (as of October 31) from BC public schools.

Ministry Code	School Name	Kindergarten	Grade 1 - 3	Grade 4 - 7	Grade 8 - 12
00502023	Amy Woodland Elementary	17.5	20.6	23.2	-
00505033	Elkford Elementary Secondary	-	-	19.5	15.0
00505034	Fernie Secondary	-	-	18.4	20.8
00501010	Frank J Mitchell Elementary	20.6	22.2	26.1	-
00502028	Gordon Terrace Elementary	22.0	21.4	27.7	-
00502029	Highlands Elementary	17.5	22.7	27.9	-
00501009	Isabella Dicken Elementary	20.3	21.1	24.7	-
00501007	Jaffray Elem-Jr Secondary	21.3	19.4	14.1	10.7
00502032	Kootenay Orchards Elementary	19.0	22.8	27.0	-
00502011	Laurie Middle School	-	-	25.5	18.1
00502001	Mount Baker Secondary	-	-	-	20.7
00505018	Parkland Middle School	-	-	24.2	23.6
00502030	Pinewood Elementary	17.0	22.5	27.5	-
00501017	Rocky Mountain Elementary	20.4	20.6	23.6	-
00505035	Sparwood Secondary	-	-	25.3	15.2
00502031	Steeples Elementary	19.2	19.9	25.2	-
00502024	T M Roberts Elementary	15.7	21.5	22.2	-

---

## Glossary

---

Term	Definition / Notes
English Language Learners (ELL)	<ul style="list-style-type: none"><li>• A program offered to students whose primary language(s) is/are other than English, and who may require additional services.</li></ul>
Grade	<ul style="list-style-type: none"><li>• The assigned grade of a student on October 31.</li></ul>
K	<ul style="list-style-type: none"><li>• Kindergarten</li></ul>
Number of Students	<ul style="list-style-type: none"><li>• Student population is calculated by headcount.</li></ul>
Student	<ul style="list-style-type: none"><li>• A person enrolled in a BC school. Student populations are calculated by headcount. Students include all adult and school-aged persons who are working toward a certificate of graduation.</li></ul>
Student Entitled to an Individual Education Plan	<ul style="list-style-type: none"><li>• A student for whom an Individual Education Plan (IEP) must be designed under the Individual Education Plan order, Ministerial Order 638/95.</li></ul>