

District Literacy Plan – School District #62 (Sooke)

Overview

School District No. 62 (Sooke) submitted an Expression of Interest to Literacy Now on behalf of the community of Sooke, B.C. in spring 2007 and the Westshore in spring 2008. Literacy Now approved both applications and Gillian Petrini was hired on a contract-basis to be the Community Literacy Plan Coordinator for both communities.

The Sooke Community Literacy Plan was completed in April 2009 and is included in this plan. A Literacy Outreach Coordinator, Mylene Brousseau, was hired in May 2009 to implement this plan. The Westshore Community Literacy Plan is currently being developed and a summary of the planning process, to date, is included in this plan.

K-12 School District #62 Initiatives

One of the goals of School District #62's Achievement Contract is "improving student achievement in literacy". The District is focused on increasing reading and writing success rates for Grade 4 males, increasing reading success for all Grade 6 and 9 students, increasing reading success of all Aboriginal students – Grades 3-9, increasing writing success of all Grade 7 students, and increasing the pass rate of English 10. The District has a District Vice-Principal, three part-time Literacy Curriculum Coordinators, and a part-time Curriculum Support teacher at each of our middle schools supporting teachers and administrators in best practice literacy strategies. A variety of targeted Curriculum Team and Aboriginal Education actions are identified below:

- Offer literacy curriculum support to teachers during school-based literacy weeks
- Support school-based inquiry/action research teams focused on reading or writing
- Support schools in a school-wide focus on the adoption of assessment for learning strategies
- Continue to support teachers in Year 2 of their pilot of Nelson and Scholastic literacy materials for Grades 4, 5 and 7
- Complete a 3-part grading and reporting workshop series for all middle and secondary teachers
- Build capacity among primary, intermediate, middle and secondary teachers through focused literacy network meetings
- Offer support in utilizing Fountas & Pinnell, for primary, and fall DART, for intermediate, to plan and focus reading instruction
- Offer workshops focused on boy's learning interests and styles
- Build capacity among First Nations Teachers and Aboriginal Early Literacy Support Teachers in reading instruction strategies
- Offer support to First Nations Teachers and Aboriginal Early Literacy Support Teachers in utilizing fall DART data to plan and focus instruction
- Introduce teachers to relevant Aboriginal content resources through literacy network meetings
- Offer academic support via Aboriginal Teachers and Support Workers at middle and secondary schools

- Support for literacy needs at elementary school via Aboriginal Early Literacy Support Teachers

Additionally, many of our schools are involved in a number of school-based goals and initiatives related to literacy.

Westshore Community Literacy Plan Summary

This community literacy plan includes the four municipalities of Colwood, Highlands, Langford and Metchosin, otherwise known as the Westshore. This region is located just west of Victoria, the capital city of British Columbia. These municipalities are very diverse and range from rural natural settings to bustling, developing city cores. The main town cores of Colwood and Langford offer the majority of services for the area, including recreation, libraries, commercial retail and small industry. The outlying areas of Metchosin and Highlands are rural/ residential and have little commercial development. All areas have a number of local elementary schools and nearby middle schools. There are two secondary schools and two post-secondary institutions.

The Westshore Literacy Plan began in December 2008 with a meeting of interested individuals and community representation. This meeting established the Literacy Now task group and identified those who should also be contacted. A “soft” Launch was held during January and February 2009, where presentations were made to all mayors and councils, as well as the local Chamber of Commerce. Local organizations, agencies and businesses were also contacted individually.

Monthly meetings were held every third Thursday of the month and consistently brought new members to the Literacy Now task group. During this time, vision and mission statements were created. The group discussed the creation of the Literacy Inventory and created a comprehensive questionnaire. This questionnaire was sent out to over 100 local agencies/ organizations at the end of March 2009 to be completed and returned either by email, fax, or conducted by phone. Over the following month, the coordinator focused on gathering this information from community members and organizations and compiled data to create the Literacy Assets Inventory. This time was also devoted to begin collecting demographic and statistical information for the four municipalities designated in this plan.

In May 2009, community members met again to review and analyze all the community literacy information compiled. Meetings were held both during the day and in the evening to accommodate community member’s schedules. During these meetings, strengths, gaps, challenges and needs were identified for each age grouping. There were opportunities to provide input and feedback and a chance to begin identifying areas of focus for the literacy plan. The Literacy Assets Inventory and strengths, gaps, challenges and needs summaries are not included in this plan but will be a part of the final Westshore Community Literacy Plan.

Now that a number of areas of focus have been identified, the coordinator will be engaging the community for their feedback on these ideas. This will be done through focus groups, meetings out in the community, with a variety of groups, such as those residing on the Scai’ New reserve, members of parent and tot groups, members of the local Senior Centre, youth in various programs, teaching staff, health nurses, etc. Many such focus groups will be held to ensure that a wide range of perspectives are heard and that all community groups are represented. There may also be opportunities to have a literacy table at such venues as the library, recreation centre,

and mall to reach a further number of community members. The completion of the Westshore Community Literacy Plan is anticipated for early fall 2009.

PARTICIPANTS OF THE WESTSHORE LITERACY NOW PLANNING PROCESS

Those involved in the Literacy Now initiative were continually updated on the process through whichever means were most suitable, i.e. email or phone. Meetings were held in locations that were wheelchair accessible and meeting times aimed to accommodate as many different schedules as possible.

SOOKE LITERACY NOW TASK GROUP MEMBERS
Andrea Brimmell- Juan de Fuca Library Manager
Brenda Storr- Camosun College
Carolyn Vincent- Literacy Curriculum Coordinator - School District 62
Claire Rettie-READ Society
Dianna Seaton- School District 62 Trustee
Doris London- Colwood Rotary Club
Frances Krusekopf- Vice Principal Staff Development- School District 62
Gabrielle Goudy- Community Member
Gillian Petrini- Sooke Community Literacy Plan Coordinator
Jane Hammond- Metchosin Community House/ Metchosin Municipal Representative
Lisa Hoskins- Children’s Library Programmer- Juan de Fuca Library
Liz Wanzel- Literacy Victoria
Luba Panayotof-Schaan- Capital Families Association
Mary Nall- Highlands Municipal Representative
Nadine Charles- Community Coordinator- Beecher Bay First Nation
Stephen McHugh- Westshore Centre for Learning and Training
Susan Chandler- Regional Literacy Coordinator
Vivian Collyer- SD 62
SOOKE LITERACY NOW COMMUNITY PARTNERS
Bobby Neal- Westshore Parks and Recreation
Cynthia Day- Colwood Councilor
Janice Booth- Worklink
Jennifer Lucas- Capital Families Association

Jim Cambridge- School District 62 Superintendent

John Borass- Camosun College

Marc Bissley- Camosun College

Kathryn Lacerte- British Columbia Association of Friendship Centres

Pam Richmond- Principal of Aboriginal Ed

Scott Manning- School District 62

Sharon Leonard- School District 62

Tammy Moore- READ Society

SOOKE LITERACY NOW SUPPORTERS

Andrea Harding- Boys and Girls Club

Bob Belcher- SD 62

Barbara Arden- Community Member

Bonnie Stacy- SD62

Bryan Johnson- SD62

Dallas Dixon- Pacific Centre Family Association

Darcy Morgan- Hulitan Social Services Society

Darren Russell-SD62

Diana Clarke- READ Society

Freda Morgan- SD62

George Kruse- SD62

Ingrid Vaughan- Westshore Chamber of Commerce

Julia Sahota- SD62

L. Magiera- SD62

Nancy Watters- READ Society

Ramon McArthur- SD62

Ross Wallace- RCMP

Scott Branch- Military Family Resource Centre

Scott Stinson- SD62

Steven Ternert- Langford Municipality

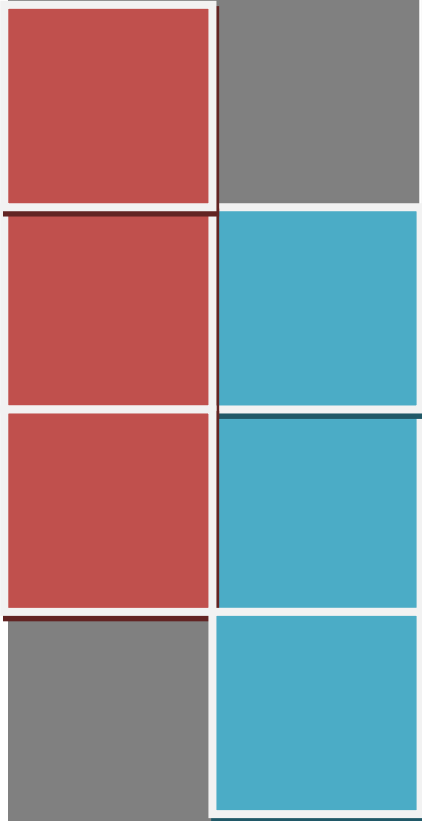
Teresa Stachowski- Lighthouse Christian Academy

Windy Beadall – SD62

2008
2009

SOOKE COMMUNITY LITERACY PLAN

Learning For All, Learning For Life.





SOOKE COMMUNITY LITERACY PLAN

East Sooke to Port Renfrew

2008/ 2009

A collaborative effort of the Sooke Literacy Now Task Group,
Community Partners and Supporters

TABLE OF CONTENTS

EXECUTIVE SUMMARY.....	5
THE VISION.....	6
Definition of Literacy.....	6
The Purpose	6
The Vision.....	6
Guiding Principles.....	7
GLOSSARY OF TERMS.....	9
PART 1: SOOKE COMMUNITY LITERACY PLAN.....	10
THE PROCESS.....	10
Participants in the Literacy Now Process.....	11
COMMUNITY PROFILE.....	13
Location and Description.....	13
History.....	14
Age Distribution.....	15
Family Structure.....	16
Ethnic Identity.....	16
Education.....	17
Economy.....	17
SUMMARY OF LITERACY ASSETS INVENTORY.....	19
Prenatal to Age 5.....	19
Elementary and Middle Years.....	21
Secondary and Young Adults.....	22
Adults.....	24
Seniors.....	25
Community.....	26
THE COMMUNITY LITERACY ACTION PLAN.....	28

PART 2: PORT RENFREW COMMUNITY LITERACY PLAN....	36
THE PROCESS.....	36
Participants in the Literacy Now Process.....	37
COMMUNITY PROFILE.....	38
Location and Description.....	38
History.....	38
Education.....	38
Economy.....	39
SUMMARY OF LITERACY ASSETS INVENTORY.....	40
Prenatal to Age 5.....	40
Elementary and Middle Years.....	40
Secondary and Young Adults.....	42
Adults.....	43
THE COMMUNITY LITERACY ACTION PLAN.....	44
REFERENCES.....	48

APPENDICES

- A Sooke Literacy Assets Inventory**
- B Port Renfrew Literacy Assets Inventory**
- C Budget**

EXECUTIVE SUMMARY

This community literacy plan includes the area from East Sooke to Port Renfrew, located on the southwestern tip of Vancouver Island. This region is inclusive of a number of communities; Sooke, East Sooke, Otter Point, Shirley, Jordan River, Port Renfrew. The District of Sooke is the main town core and offers the majority of services for the area, including four elementary schools, a middle school and secondary/ community school. The outlying areas are rural/ residential and have little commercial development with one elementary school located in Port Renfrew.

The Sooke Literacy Now Initiative began with an Expression of Interest submitted by the School District 62 in December 2007. Following this a Community Literacy Plan Coordinator was hired to continue facilitating the Literacy Now process and oversee the completion of a community literacy plan. In April 2008, a Launch meeting was held and attended by 50 community members. This meeting generated information on literacy issues and challenges in the community, as well as brought many on board the Literacy Now initiative to serve as task group members, community partners and supporters. Over the following months, a community profile and a literacy asset inventory were developed. This information was then brought forward at a community meeting in September 2008 where strengths, gaps and challenges were identified. This led to the identification of the following areas of focus: coordination, accessibility and communication. Specific goals were identified for the community of Port Renfrew which due to its isolated location and community characteristics, required unique goal setting to meet community need.

Each area of focus was reviewed and goals created. Objectives were then established to outline how goals would be met, as well as resources, success statements and timelines produced. The draft plan was created and presented to the task group and community members for review. A final plan was then submitted to 2010 Legacies Now for approval.

THE VISION

The task group worked through ideas of what literacy is and what the purpose and vision for this project would be. It was agreed that the definition from the International Adult Literacy Survey (IALS) would serve the planning process well, as it was both inclusive of key ideas of literacy while also providing parameters to frame the scope of the project. The purpose followed what is expected out of the community planning process and the vision is a culmination of important ideas and values. The guiding principles guided the process and were inclusive of and extending from those of Literacy Now.

DEFINITION OF LITERACY

IALS defines 'literacy' as a particular capacity and mode of behavior: the ability to understand and employ printed information in daily activities, at home, at work and in the community - to achieve one's goals, and to develop one's knowledge and potential.
www.conferenceboardofcanada.com/workplaceliteracy/about-skills.asp

THE PURPOSE

To identify learning needs of the East Sooke to Port Renfrew area and respond to these by collaborating with others to create a literacy plan for the communities of East Sooke to Port Renfrew.

THE VISION

Learning For All, Learning For Life

“To build community partnerships and help create an accessible and sustainable learning community for the area, one that offers choice, fosters lifelong learning and encourages individuals to reach their potential”

GUIDING PRINCIPLES

The Task Group operates on a set of guiding principles.

1. Providing opportunities for all community members to be included in literacy programs.
2. Being proactively responsive to local needs across the community.
3. Networking and cooperating with interested individuals, groups, programs, organizations, and businesses.
4. Fostering and building partnerships in the community that support literacy and lifelong learning.
5. Increasing the profile of literacy and lifelong learning and increasing awareness of literacy issues in the community
6. Incorporating an inclusive understanding of literacy
7. Seeing literacy as part of community capacity building, building on community strengths and programs without duplicating services.

Guiding Principles of Literacy Now

COLLABORATION

Networking and cooperating with interested individuals, groups, programs, organizations, and businesses is essential.

It is important to foster and build partnerships in the community that support literacy and lifelong learning.

INNOVATION

Existing programs are valued and innovative ways will be used to build on and create new literacy supports for the community.

RESPECT

All perspectives are valued and all voices welcomed and respected.

ACCESS FOR ALL

Opportunities will be provided for all community members to be included in the planning process and in community literacy programs.

An inclusive understanding of literacy will be incorporated.

CAPACITY AND STRENGTH BUILDING

Literacy is seen as part of community capacity building, building on community strengths and programs without duplicating services.

SUSTAINABILITY

Initiatives will be developed in a thoughtful and sustainable manner.

JOY

People will be welcomed and involved in friendly, positive ways. Efforts and successes will be acknowledged and celebrated.

GLOSSARY OF TERMS

CRD- Capital Regional District

DISTRICT OF SOOKE- the name for the incorporated community of Sooke

EMCS- Edward Milne Community School

IALS- International Adult Literacy Survey

LOC- Literacy Outreach Coordinator

MCFD- Ministry of Child and Family Development

MFRC-Military Family Resource Centre

PRHSSS- Port Renfrew Health and Social Services Society

RCMP- Royal Canadian Mounted Police

SD #62- School District #62- Sooke zone

SEAPARC- Sooke and Electoral Area Parks and Recreation Centre

SFRS-Sooke Family Resource Society

Sooke Region CHI- Sooke Region Community Health Initiative

VIHA- Vancouver Island Health Authority

SOOKE COMMUNITY LITERACY PLAN

THE PROCESS

The Literacy Now process was initiated by an Expression of Interest submitted by the School District #62 in December 2007. This initial step involved a number of dedicated individuals from the School District, The District of Sooke, the Regional Literacy Coordinator and the staff of the READ society.

In December 2007 a job posting was advertised for the position of Community Literacy Coordinator. Gillian Petrini was hired for the position and began in January 2008.

Throughout the months of February and March, a number of meetings were held with the established task group to prepare for the Literacy Now Launch meeting. This preparation involved creating a contact list, sending out invites, notifying media, organizing location and materials, etc. The Launch was held on April 8th and was attended by 50 community members. The evening generated information regarding the current programs in place and the community hopes and dreams for the future. The evening also brought forward a number of community members to join the task group, become community partners and supporters. In the weeks following the Launch, information from the evening's event was compiled and distributed to those involved. As well, the coordinator met with a variety of community groups to ensure that many perspectives were heard and that all groups were represented.

In May and June, monthly meetings were held and involved the new members of the Literacy Now task group. In May vision and mission statements were created and in June, the group discussed the creation of the Literacy Inventory and a comprehensive questionnaire was created.

During the summer months, the coordinator focused on gathering information from community members and organizations to create the Literacy Assets Inventory. This time was also devoted to summarizing demographic and statistical information in a Community Profile for the areas designated in this plan.

In September, community members met again to review and analyze all the community literacy information compiled. Meetings were held both during the day and in the evening to accommodate community member's schedules. As well, locations were also chosen in order to be accessible to all people. During these meetings, strengths, gaps,

challenges and needs were identified for each age grouping. There were opportunities to provide input and feedback and all members had opportunities to discuss and agree upon the areas of focus identified for the literacy plan. This led to the creation of key goals and the production of relevant actions to be completed in order to meet the goals. This was the foundation of the Literacy Action Plan.

PARTICIPANTS OF THE SOOKE LITERACY NOW PLANNING PROCESS

Those involved in the Literacy Now initiative were continually updated on the process through whichever means were most suitable, i.e. email or phone. Meetings were held in location that were wheelchair accessible and meeting times aimed to accommodate as many different schedules as possible.

SOOKE LITERACY NOW TASK GROUP MEMBERS	
Carolyn Vincent- Early Success Advisor	Liz Wanzel- Literacy Victoria
Claire Rettie-READ Society	Laura Lancaster- Literacy Advisor
Frances Krusekopf- Vice Principal Staff Development	Nicky Logins-Sooke Family Resource Society
Fleur Harvey-Kelly- Rotary Club	Pam Richmond- Principal of Aboriginal Ed
Gillian Petrini- Sooke Community Literacy Plan Coordinator	Rusi Jokhi- Library Manager
Heather Ratcliffe-Hood- Westshore Learning Centre	Rita Button- School District 62
Jan Dupuis- Regional Literacy Coordinator	Roberta MacDonald- Community School Coordinator
John Borass- Camosun College	Sheila Beech- District of Sooke
Les Haddad- Junior Youth Empowerment Program	Sheila Wallace- Community Member
	Tena Atley- Community Member

SOOKE LITERACY NOW COMMUNITY PARTNERS

Betina Pickelein- community member	Laurie Szadkowski- School District 62
Bonnie Wilde- Tutor	and Spirit of BC
Brenda Parkinson- District of Sooke	Roberta Kubik- School District 62
Denise Chewka- Pacheedaht First Nations	Vanessa Boylan- British Columbia
Elaine Haddad- School District 62	Association of Friendship Centres
Jennefer Byrne- School District 62	

SOOKE LITERACY NOW SUPPORTERS

Alegha Van Haneuse- Literacy Victoria	Kerrie Maclean- T'Souke Band
Ben Temple- Community Member	Administrator
Bob Phillips- School District 62 Trustee	Krista Stafford
Brian Fox- School District 62	Kirsten Hull- Vancouver Island Health
Superintendent	Authority
Claire Winstanley- Community Member	Marg Rose- Victoria Foundation
Denise Riley- School District 62 Trustee	Margot Swinburnson- School District 62
Dianna Seaton- School District 62 Trustee	Trustee
Glenda Dhillon- School District 62	Nancy Watters- READ Society
Gordon Planes- Chief of TSouke Nation	Niki Munro- Mental Health Clinician
Helen Thomas- READ Society	Rick Amour- District of Sooke
Janet Evans- Mayor of Sooke	Scott Branch- Military Family Resource
Janice Booth- Worklink	Centre
Jennefer Burgis- School District 62	Shirley Skidmore- Rotary Club
Jim Cambridge- School District 62	Terry Honer- School District 62
Assistant Superintendent	Wendy Palynchuk- Worklink
Kathryn Lacerte- British Columbia	
Association of Friendship Centres	

COMMUNITY PROFILE

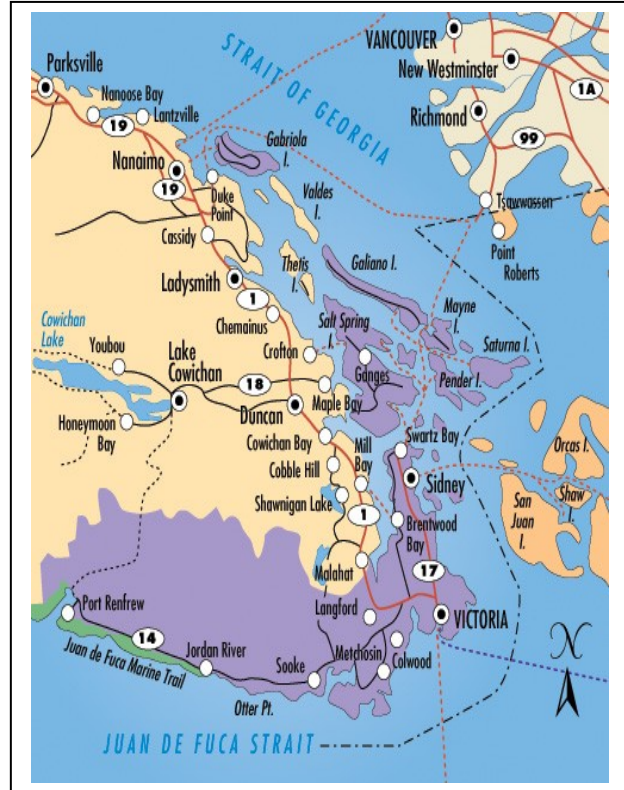
LOCATION AND DESCRIPTION

The region identified in this plan is from East Sooke to Port Renfrew.

This area is a part of the Capital Regional District (CRD) which is the regional Government for the municipality of Sooke and the Juan de Fuca Electoral area.

This includes the communities of Otter Point, Shirley, Jordan River and Port Renfrew.

The area designated in this plan is located at the southern tip of Vancouver Island on the West Coast of the Pacific Ocean. It is reached by one main road and is approximately 72 km from Port Renfrew to Sooke and another 38 km from Sooke to



major health services. This means a long and windy 110 km drive, or over two hours, from Port Renfrew to Victoria. Weather conditions and accidents can often cause the road to be closed, leaving many in this designated area often isolated and far away from the major amenities of the bigger city.

The District of Sooke: The District of Sooke is a rural town situated on the Pacific Ocean and surrounded by an expanse of nature, where the “Rainforest Meets the Sea”. The District of Sooke has a population of 9,700 and is the traditional territory of the T’Souke First Nations, who have two reserves in the area. The town features many amenities including a library, recreation centre, museum, family resource centre, employment centre, retail, four elementary schools, one middle school and one secondary school/ community school.

The surrounding communities of Sooke, which include East Sooke, Otter Point, Shirley, Jordan River, Port Renfrew, comprise another 4,000 in population.

East Sooke: East Sooke is located southwest of the District of Sooke, on a peninsula surrounded by the Sooke Basin, Sooke Harbour and the Strait of Juan de Fuca. This region boasts the largest park area in the Capital Regional District with an extensive trail system and pristine beaches. East Sooke is home to small residential areas, large properties and a vast expanse of wilderness. It is a sparsely populated area with 1,600 residents in total. The Scia' Neu or Beecher Bay First Nations reside here and have one reserve within East Sooke.

Otter Point: The community of Otter Point is found just north of the District of Sooke and is home to another 1,500 people. It is predominately rural with many small hobby farms and large forested areas. There are no commercial facilities in the area except for a corner store and some light industry from area residents. Otter Point also has a volunteer fire department.

Shirley and Jordan River: Beyond Otter Point, the road winds along the rugged West Coast of Vancouver Island, passing through the rural/ residential community of Shirley and further north Jordan River. These two small communities have a combined population of approx. 200. Shirley has an active community association, community hall and a volunteer fire department. Jordan River is located about 1/3 of the way between Sooke and Port Renfrew and is a small logging community. Jordan River features an open view of the Pacific Ocean, making it a popular spot for surfing.

Port Renfrew: Port Renfrew is the last community at the end of Highway 14 and is the start of the renowned West Coast Trail. The village has approx. 180 residents and offers a variety of services, such as accommodations, groceries and retail. Port Renfrew has a growing recreational tourism industry and is home to a number of fishing charters and other adventure touring businesses. There is one elementary school and various community services offered in Port Renfrew. This area is the ancestral home to the Pacheedaht First Nations, who have 100 members living adjacent to the village.

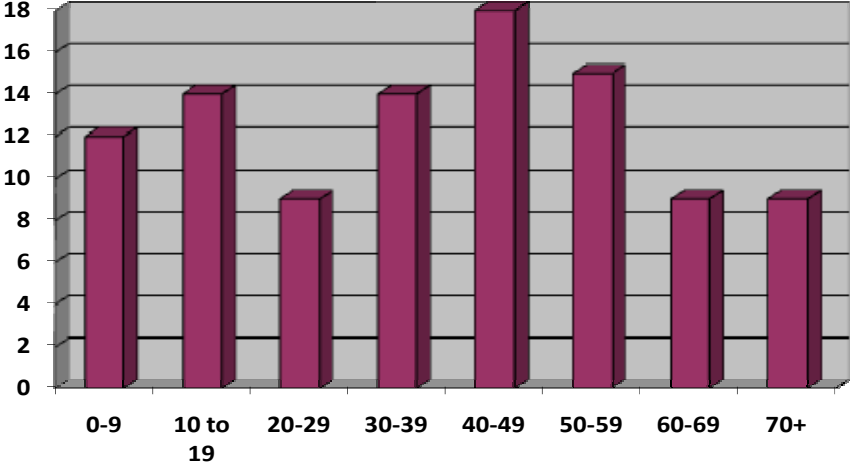
HISTORY

The T'Souke First Nations people, Scia' Neu to the east and Pacheedaht to the north, first resided in the East Sooke to Port Renfrew area. Sheltered by the forest, they lived graciously on the abundance of both the forest and the sea.

In the 1800's, the Hudson's Bay Company established a fur trading fort at Camosun, now the city of Victoria. This saw the emergence of settlements which soon reached the Sooke Basin. Pioneering families began settling into the region and creating their way of life. The great douglas firs, cedars and spruces of this area attracted many to the area and the business men of the time saw their value as timber. Operations, such as a sawmill, began appearing in the mid 1800's and was the start of the logging industry for this region. Commercial fish traps also began to appear in the early 1900's. These resource based industries would build both the town and the economy of the Sooke area. Although these industries were a long time economic force, extensive harvesting depleted resources leaving many residents to find alternative employment. With the regions natural beauty, tourism has become a growing industry.

AGE DISTRIBUTION

The median age within the Sooke District is 41 years which is similar to the provincial average. However, the outlying areas have a slightly lower median age. Overall the population breakdown for both town and area are as follows:



FAMILY STRUCTURE

According to Statistics Canada 2006 figures, 52% of Sooke area residents, over the age of 15 are legally married. Over a quarter of the population 29%, over the age of 15, are single, while 11% are divorced, 3% separated and 5% widowed. Of the approximately 14,000 people residing in the East Sooke to Port Renfrew area, 4,300 are family households, 1/3 of these have children. Of these approximately 1,500 households with children, over 600 of these families are single parent, 80% female single parents.

Overall, the average household size in the East Sooke to Port Renfrew area is 2.5.

The average family income in 2005 was similar to the provincial average family income with the median income being \$64,141. For single parent families this was also similar to the provincial making provincial median, with females' income being \$33,927 and single male parent families earning \$42,755, slightly more than the provincial median.

ETHNIC IDENTITY:

Aboriginal Population:

The area designated in this plan is home to the T'Souke First Nation, Scia' Neu First Nation and Pacheedaht First Nation. The District of Sooke is on the traditional territory of the T'Souke First Nation. The T'Souke Band has 2 reserves on 67.2 hectares of land and is home to 209 residents. The band has a community hall and band office, preschool, kindergarten, after school. Southwest of Sooke, in East Sooke, is the Scia' Neu First Nations. Their reserves are home to 140 residents. The total Aboriginal population of the area is approx. 1,000. The Pacheedaht reside in the Port Renfrew area with 4 reserves on 174 acres of land, with approximately. 100 on reserve members.

Language

The main language spoken in the area is English with 90% of people speaking English only. There are 300 people with French as their mother tongue and over 1000 residents whose first language is either German, Punjabi, Dutch or Cantonese.

EDUCATION:

The School District #62 operates 4 elementary schools (K-Grade 5) within the District of Sooke area and one elementary school in Port Renfrew. There is also one middle school (Grades 6-8) in the town of Sooke, as well as one secondary school (Grades 9-12). The secondary school has an associated alternative education program which offers grade 9-11 courses. As well, the secondary school also serves as a community school, offering adult education and community learning to those living in Sooke and the surrounding areas. Sooke has the 6th lowest high school graduation rate in the province of BC. According to BC Ministry of Education SD 62 Data 2005, 66% of students graduated in 2005, compared to the BC average of 75%.

In adults ranging from 25-34, 18% have not finished high with most of this population having completed high school and many completed further education either in the trades (19%), college (18%) and university (16%). In the age group 35- 64, 17% had not finished high school. On the reserve areas, in the age groups between 25 and 64 generally half do not have a high school diploma. Of those who have completed this level, many have gone onto training within the trades or onto college education.

ECONOMY

Traditionally, the economy of the region has been mainly resource based, both forestry and fishing, and although this still represents a component of this area's employment, there is increasing growth in other sectors. As of 2006, the industries employing the most residents of the East Sooke to Port Renfrew region were the business services sector, health care and social services, retail and construction.

Over the past few years, the tourism and hospitality industries have flourished. Many visitors are drawn to the region each year to experience the stunning, natural setting. The area offers many recreational activities, both leisurely and challenging, from kayaking sheltered bays, exploring tidal pools at Botanical Beach to hiking the extreme trails of the West Coast or Juan de Fuca trails. There are also numerous fishing charter companies. As well, the area is home to many artisans, small businesses and quaint accommodations.

The population of Sooke has grown 11% from 2001 to 2006 and has continued to steadily increase since this time. As housing prices recently skyrocketed in Victoria,

many have found affordable housing in Sooke. There are numerous development projects underway and more in the planning stages for both Sooke and outer lying areas. These developments include mainly residential and multi-family units and ensure lots of work for the trades. As of 2006, the unemployment rate for the area was 4.3, lower than the provincial rate 6.0.

SUMMARY OF LITERACY ASSETS INVENTORY

BIRTH TO AGE 5: PRENATAL, PERINATAL, UP TO KINDERGARTEN

Assets and Opportunities:

For those expecting a child there are resources through the Sooke Family Resource Centre, however there are no prenatal classes offered within the Sooke area. Pregnant women at high risk are able to get additional support through VIHA and midwives will sometimes offer one on one or small prenatal classes. Once the baby is born, Vancouver Island Health Authority VIHA, in conjunction with the Vancouver Island Regional Library VIRL, provides a Books for Babies program which promotes reading to infants. Books and sometimes CD's are provided. Screening for hearing is done at the hospital or through the VIHA Westshore Health unit if missed. Ongoing and regular checkups for hearing and vision are provided by VIHA staff in Sooke or referrals made through them.

For young children to preschool age, there are a number of community programs found within Sooke. The Sooke Family Resource Society offers a wide variety of programs to support families. There are a number of parent and tot groups, play groups as well as drop in programs for children and their childcare providers. The centre also partners with other organizations and agencies to offer programming such as the Mother Goose story time and Ready, Set, Learn events (an introduction to school initiative). There is a large book bank lending library offering a large range of resource materials, including parenting resources, children books and literacy software. The Regional Library also provides a weekly preschool story time. Strong Start, a free early learning drop in centre, is offered daily (M-F) at John Muir Elementary. There is also a SD62 Early Learning Initiatives committee which provides networking between School District 62 and community representatives. As well, a positive parenting program, called Triple P, is a new collaborative initiative between VIHA, Ministry of Child and Family Development (MCFD) and the School District, providing parenting workshops in the community. The local recreation centre offers a number of programs for young children including swimming, skating and other recreational activities.

The Sooke area has a number of day care and preschool options available from infant to school age. There are approximately 500+ spaces in the region and approx. 800

under the age of five living with the area designated in this plan. There are licensed not required family day cares, group care facilities and preschools. Many spaces are available in the family, preschool and group care facilities with few spaces offered for the under 36 month age bracket. T'Souke First Nations offers its own preschool, Kindergarten and afterschool program which is open to Native and non-native children. There are four preschool program in Sooke- Kingfisher Childcare Services, Sooke Co-operative, Sumsattatlillum Preschool and a Montessori Preschool. Outside of the community, the Military Family Resource Centre, located in Colwood and Esquimalt, has a number of resources and services for military families.

Challenges and Gaps:

- Create more Family Literacy programs involving parents, teaching parents how to help with their child's literacy skills
- Agencies, organizations compete for funding
- Increase programming that attracts Aboriginal families
- Transportation as barrier
- More outreach
- More support for young parents
- More awareness and understanding of childhood development and importance of early learning

Needs:

- Regular communication between 0-5 literacy providers
- Stronger connection between pre-school literacy partners, school district, parents, caregivers
- Training for literacy volunteers
- More parent education- understanding of child development and role of parents in learning

Areas of Focus

Communication and links between partners- service providers, parents, caregivers
Universal access, more availability of Early Learning Programs that include parents

ELEMENTARY (6-11) AND MIDDLE SCHOOL (12-15) YEARS

Assets and Opportunities

The School District #62 has four elementary schools and one middle school. Many literacy supports are available through the schools, for both school staff and students, such as a curriculum and literacy advisor, teaching supports, reading recovery, deaf and hard of hearing programs, Homebound program (home instruction for certain circumstances), peer helpers, leadership programs, DARE- a drug awareness program offered in partnership with the RCMP and PARTNERS- a parent as teacher program. As well, a positive parenting program, called Triple P, is a new collaborative initiative between VIHA, Ministry of Child and Family Development MCFD and the School District #62, providing parenting workshops in the community. There are also a number of families who chose to school their children from home and use various services such as the Victoria Home Learning Network.

Outside of the school setting, there is after school care at the Sooke Family Resource Society and through T'Souke First Nation. Youth centres are offered through the T'Souke First Nation and the local recreation centre. The Youth for Christ has a refuge bus that serves as a weekly youth hang out. There is also a Junior Empowerment Program offered to youth ages 11-14. Various clubs and organizations have programming for this age group such as the Boy Scouts and Girl Guides, the Vancouver Island Regional Library summer reading club at the library, museum, and various recreation programs offered through the local recreation centre. There are also tutoring services available within the area at a cost. The Military Family Resource Centre, located in Colwood and Esquimalt, also has a number of resources and services for military families.

Challenges and Gaps:

- Families unable to afford tutoring fees
- Beliefs- community, parents believe schools are responsible for teaching children to read
- More expertise and comfort level with technology for parents and teachers to help children

- More support for families facing challenges (such as mental health issues, addictions)
- Transportation as barrier
- Lack of outreach programs

Needs:

- Community involvement in schools and in the community (i.e. the sewing instructor helping kids read patterns etc.)
- Big brothers, big sisters involvement
- School involvement in community i.e. children visiting Ayre Manor
- More outreach programs

Areas of Focus:

Parent and significant adult involvement in children's literacy (open dialogue, materials, workshops, open-minded teachers)

Technology projects to support changing student interests for greater buy in

SECONDARY/ YOUNG ADULT: AGES 16-19

Assets and Opportunities

Edward Milne Community School offers a comprehensive secondary school program with numerous additional programming such as the culinary arts program. There is learning assistance and behavioral support programs at EMCS. ED West is the alternative education program, a satellite of Pacific Secondary School. This program offers a number of grade 9-11 courses and allows students to complete work on their schedule. There are also a number of families who chose to school their children from home and use various services such as the Victoria Home Learning Network.

The Sooke Scribblers, a community writing group, offer contests and opportunities for youth to join through the secondary school. Tutoring services are also available again for this age group.

Similar to the pre-teen group, there is a youth hang out available through the recreation centre and also T'Souke First Nation. Youth in the community who have left school to go into the workforce can be assisted by Worklink. Worklink is a community organization which helps provide skill building and employment resources. The library

and museum are also available to youth and the local rec. centre provides various recreational programming. As well, a positive parenting program, called Triple P, is a new collaborative initiative between VIHA, Ministry of Child and Family Development (MCFD) and the School District #62, providing parenting workshops in the community. Outside of the town of Sooke there are a variety of services that this age group can access but they need to go outside the community to the Western communities or Victoria. West Shore Centre for Training and Learning has a wide variety of programs, including upgrading and distance ed. Camosun College also has upgrading courses tuition free and through the School of Access offers young adult learners various courses and programs to prepare them for the workforce. The READ Society offers small group tutoring programs, Adult Basic Skills, Computer Literacy and ESL. The Military Family Resource Centre also has a number of resources and services for military families.

Challenges and Gaps:

- Lack of connection between different agencies/ organizations
- Getting to kids before they drop out, one third of students are bored and are B students
- How could we use technology projects as a hook into literacy learning
- Keeping parents, significant adults engaged through these years
- Transportation as barrier

Needs:

- Need people to interact with students around literacy issues
- Need to use agencies before students are in trouble
- Need volunteers, tutors that can work with students
- Needs to be in context of family literacy, if possible
- Need times that work for the students
- Need to understand benefits of literacy
- Need to involve youth, asking youth to engage them in determining motivational factors around literacy- staying in school

Areas of Focus:

Tutors trained to work with kids, tutors the students would want to work with

Technology projects to engage students- youth as researchers
Seek partnerships with agencies

ADULT: AGES 20-64

Assets and Opportunities The Sooke Family Resource Society offers a wide variety of programs to support families. There are a number of parent and tot groups, play groups as well as drop in programs for children and their childcare provider. There is a large book bank lending library offering a large range of resource materials, including parenting resources, children books and literacy software. There are also parent discussion groups, support circles, a young parent group for those under 25, a monthly home front bistro, a bi-weekly supper circle and a positive parenting program. For parents of elementary school children, there is a program through the schools which trains parents to be teachers in helping their children learn to read. Edward Milne Community School offers a variety of adult education programming that are literacy related including computer training, creative writing techniques, job training and more. Worklink is available to those needing assistance finding work, employment skills and job training.

Sooke Scribblers is a community writing group open to adults interested in sharing and learning about writing. The local library sometimes features guest speakers, the recreation centre offers various adult programming and the museum provides a wealth of books, archives and resources.

For those adults seeking learning assistance or upgrading, there are a number of services, however all of these are outside of the community in the Western communities and Victoria area. Camosun College and Westshore Centre for Training and Learning offer upgrading and adult educational courses. Literacy Victoria provides a Learners' Network (one to one tutoring), Learning Webs (on-line learning, First Nations tutor program for T'Souke, Beecher Bay and Pacheedaht and outreach with plans on extending outreach tutoring program to Sooke and Pt. Renfrew). The READ Society offers Adult Basic Skills, Computer Literacy and ESL and their services are used by a number of clients from the Sooke area. The Military Family Resource Centre also has a number of resources and services for military families.

Challenges and Gaps:

- Childcare is an issue
- Transportation as a barrier
- Space needed for providing local programs for learning

Needs:

- Bus service to areas not on routes
- Schedule classes around transportation routes
- Services to be free
- Sustainable funding
- Shift community thinking around literacy
- Create program that income assistance clients can participate in without being \$ penalized
- Daytime services
- Support for Workplace literacy initiatives
- Local learning space

Areas of Focus:

Partnerships to provide local space for learning services

Sustainable funding- i.e. community service tax added to mill rate

Communicating services to clients-through library, care providers, schools, media

Workplace literacy

SENIORS: 65+

Assets and Opportunities The Sooke Seniors Centre is a well used resource for the senior population of the community and is open to anyone in the community over the age of 50. The Centre is a place for seniors to come and connect with others in their community. Hot lunches are offered twice a month, occasional guest speakers, BINGO, card groups, as well there is a resource library and help available to fill out tax forms etc. Ayre Manor, a wonderful new care facility, has recently opened in the Sooke area. Other groups such as the New Horizons activity Centre provide ongoing bridge groups and the Red Hat Sirens are a women's only activity group. The local library, recreation centre, museum and community school have programming open for seniors. Outside of

the Sooke community, Camosun College and Literacy Victoria have programs available to the senior population.

Challenges and Gaps:

- Transportation as barrier
- Needing a resource person to help with filling out forms, etc.
- More intergenerational learning

Needs:

- Bus service to areas not on routes
- Schedule classes around transportation routes
- Services to be free
- Sustainable funding
- Shift community thinking around literacy
- Daytime services
- Local learning space

Areas of Focus:

Partnerships to provide local space for learning services

Sustainable funding- i.e. community service tax added to mill rate

Communicating services to clients-through library, care providers, schools, media

COMMUNITY

Assets and Opportunities The community has two book stores within the Town of Sooke. There are also a number of organizations which have literacy components to them or help sponsor literacy initiatives. Spirit of BC is a provincial initiative which works on literacy projects, such as this year's literacy competition in the local schools. Rotary Club of Sooke has a literacy aspect and has supported initiatives such as the Literacy Now launch. Lions groups and the Legion also offer support to learning projects and programs. For the Sooke area and community there are many organizations providing various social services, from the women's transition house, to the food bank, to the hospice society. As well, the Regional Literacy Advisory Group meets regarding literacy initiatives, needs, issues and regional coordination. Literacy BC is a provincial service which provides resources at no cost to communities, such as

books, speakers, and a website. Legacies 2010 is another provincial service which provides numerous literacy resources and funds the community literacy planning process.

Challenges and Gaps:

- Combining instead of competing for funding
- Learning spaces for young adults, adults
- Transportation as barrier
- Sustainable funding and programming
- Coordination- team to oversee literacy initiatives
- Communication between service providers and community

Needs:

- A learn line- system providing telephone consultation re: literacy needs, private or confidential, staffed, coaching callers re: resources, follow up and documentation of progress
- Partnerships between literacy organizations to create local learning programs

Areas of Focus:

Increased community awareness, learn line

Increased communication

Transportation issues

Coordination of space for Victoria literacy outreach programs to provide programming in Sooke

SOOKE LITERACY NOW ACTION PLAN

AREAS OF FOCUS

Coordination

Goal #1: *To coordinate the development and implementation of the Sooke literacy plan, ensuring program financial sustainability and broad community participation.*

Goa #2: *To coordinate development and implementation of literacy programming to address identified gaps and needs in the community*

Accessibility

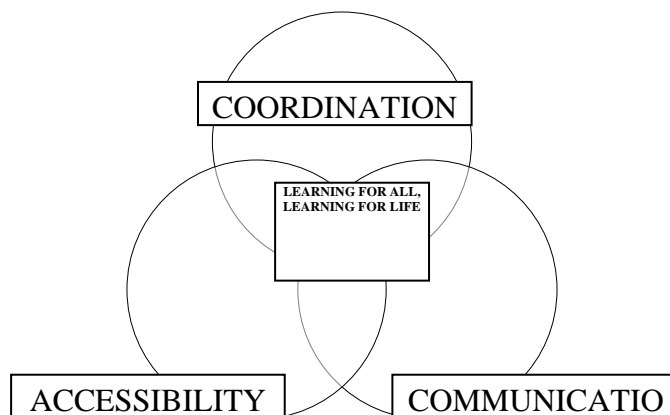
Goal #3: *To work in partnerships with community organizations to help ensure financial and transportation accessibility to existing and newly developed literacy programs for families, youth and seniors.*

Goa #4: *To increase availability of literacy programs and services within the community*

Communication

Goal #5: *To increase communication and facilitate working partnerships between community members, service providers, employers, government agencies, First Nation communities, faith communities and literacy programs*

Goal #6: *To increase community awareness in regards to literacy issues and literacy services available*



Goal #1: To coordinate the development and implementation of the Sooke literacy plan, ensuring program financial sustainability and broad community participation.

Objective #1.1: To hire a Literacy Outreach Coordinator to oversee implementation and evaluation of literacy plan.

<p>Strategies</p> <ul style="list-style-type: none"> • Establish head agency to oversee coordinator and who coordinator will report to • Establish steering committee • Create detailed job description • Develop hours and details of contract • Post ad- local papers, websites, etc. • Interview and select appropriate candidate 	<p>Resources</p> <ul style="list-style-type: none"> • Local community agency • Sooke Community Literacy Plan Coordinator • 2010Legacies Now- online resource for job description and details
---	--

Evaluation: when Literacy Coordinator position has been filled

Timeframe: Short term

Objective #1.2: To develop Volunteer Advisory committee to support literacy coordinator

<p>Strategies</p> <ul style="list-style-type: none"> • ask those already involved in Sooke Literacy Now initiative • create expectations/ guidelines for membership 	<p>Resources</p> <ul style="list-style-type: none"> • Sooke Literacy Now task group, community partners, supporters
--	---

Evaluation: when Volunteer Advisory committee has been formed to support Literacy Outreach Coordinator

Timeframe: Short term

Goal #2: To coordinate development and implementation of literacy programming to address identified literacy gaps and needs in the community

Objective #2.1: to work in partnerships with community organizations to create and properly a Book Bins program (providing free book in public places)

<p>Strategies</p> <ul style="list-style-type: none"> • Identify appropriate location for a book bin and propose book bin idea to appropriate person/ organization • Identify ways of acquiring books on a regular basis- liaise with the schools, library to create a regular pick up for donated books • Ensure person or sub-committee is available to oversee cleanliness and maintenance of book bin 	<p>Resources</p> <ul style="list-style-type: none"> • Literacy Outreach Coordinator • Book Bin committee • Local agencies/ organization to host book bin • Other regions which have successfully implemented book bin programs
--	---

Evaluation: one successfully maintained book bin in the community

Timeframe: Long term

Objective #2.2: *research the logistics of setting up a BLOCK READ program- bringing books into neighbourhoods similar to a mobile book bin*

Strategies

- Identify logistics of such a program and a community area in need of such a structure
- Identify safe community place in the neighbourhood for Block READ- a place to house the book bin for neighbours to access
- Guidelines and structure would need to be created
- Ensure availability of books- both in quantity and age appropriateness
- Pilot project one area and evaluate programs success

Resources

- Literacy Outreach Coordinator
- Local library for support
- Community members
- Library, schools etc. for book donations

Evaluation: determine viability of BLOCK READ program through researching logistics of project

Timeframe: Long term

Goal #3: To work in partnerships with community organizations to help ensure financial and transportation accessibility to existing and newly developed literacy programs for families, youth and seniors.

Objective #3.1: *To research existing documentation and consult with local agencies/groups around status of community transportation issues and initiatives*

Strategies

- Gather documentation surrounding community transportation issues
- Contact Sooke Region CHI, CRD and District of Sooke

Resources

- Literacy Outreach Coordinator
- Sooke Region Community Healthy Initiative group (CHI)
- CRD Transportation and Health Initiative Final Report
(www.crd.bc.ca/regional_planning/transportation/documents/FinalReport/public251107wmaps.pdf)
- District of Sooke

Evaluation: LOC to be informed as to state of community transportation research and initiatives

Timeframe: Short term

Objective #3.2: To work in partnership with agencies/groups to develop a strategic plan to address local transportation issues

Strategies

- identify role in partnership for LOC to help improve access to literacy programs and services
- with needs assessment and inventory, continue to develop action

Resources

- Literacy Outreach Coordinator
- Sooke Region Community Healthy Initiative group (CHI) and past research for survey
- Volunteer Advisory Group

<ul style="list-style-type: none"> plan to help improve access to programs, services • seek community partnerships • Participate in funding proposal process with community partners. 	<ul style="list-style-type: none"> • Transportation providers/community partners
Evaluation: improved transportation access to literacy programs	
Timeframe: Long term	

Goal #4: To increase availability of literacy programs and services within community	
<i>Objective #4.1: To create partnerships with various literacy agencies interested in offering their programs and services within the community</i>	
Strategies <ul style="list-style-type: none"> • Identify the literacy programs and services residents are leaving the community to access • Communicate with these agencies • Develop partnerships and ongoing communication 	Resources <ul style="list-style-type: none"> • Literacy Outreach Coordinator • Literacy agencies: READ Society, Literacy Victoria, Camosun College, etc.
Evaluation: create list of partners interested and able of offer programs/ services within the community	
Timeframe: Ongoing	
<i>Objective #4.2: To create an inventory of potential local spaces available in the community for literacy programs and services</i>	
Strategies <ul style="list-style-type: none"> • Find out what is available, inventory of spaces that already exist- survey, email • Compile list of spaces and what each space offers (i.e. Wheelchair accessibility, wired for computers, size, amenities- bathroom, kitchen, distance to bus transportation, parking, cost) 	Resources <ul style="list-style-type: none"> • Literacy Outreach Coordinator • Network of Literacy Now supporters for assistance in identifying local spaces
Evaluation: list of available local spaces	
Timeframe: Long term	
<i>Objective #4.3: To create an action plan for sustainably funding multi-age use learning spaces</i>	
Strategies <ul style="list-style-type: none"> • From inventory identify most appropriate, viable space • Identify potential funding partners- i.e. Literacy Now, school districts, local organizations i.e. Chamber of commerce, District of Sooke • Research grants available 	Resources <ul style="list-style-type: none"> • Literacy Outreach Coordinator

<ul style="list-style-type: none"> • Possible fundraising 	
Evaluation: strategic plan for funding securing local learning space(s)	
Timeframe: Long term	

Goal #5: To increase working partnerships between community members, service providers, employers, government agencies, First Nation communities, faith communities and literacy programs

Objective #5.1: *to liaise with agencies and organizations in the community to offer literacy support for current programs and find ways of interweaving literacy into already existing initiatives*

<p>Strategies</p> <ul style="list-style-type: none"> • Work with community partners i.e. First Nations, SFRS, MRCD, SD 62, VIHA, Sooke Region CHI and existing Family Literacy teams and initiatives • Create connections with First Nations community educators • Engage in communications with area daycares/ preschools • Create connections with youth programmers in the area and youth advisory council • Create partnership with Seniors Drop in Centre and other seniors' groups 	<p>Resources</p> <ul style="list-style-type: none"> • Literacy Outreach Coordinator • Local Family Literacy related agencies and organizations • Literacy Assets Inventory
--	--

Evaluation: increased communication among those involved in literacy related initiatives and identification of various ways of embedding literacy into programming

Timeframe: Ongoing

Objective #5.2: *Develop workplace initiative goals with business community*

<p>Strategies</p> <ul style="list-style-type: none"> • Literacy Coordinator to research possible provincial workplace initiatives for Sooke community • Present at monthly directors meeting (Chamber of Commerce, business networks) on benefits of workplace Literacy Initiative • Meet with business owners in their places of business 	<p>Resources</p> <ul style="list-style-type: none"> • Literacy Outreach Coordinator • READ Society • Nancy Watters-researcher: Workplace Learning Project • Literacy BC • Chamber of commerce • 2010 Legacies Now
--	--

Evaluation: successful partnership with business community and plan for workplace initiatives in community

Timeframe: Long term

Objective #5.3: *to work in partnership with VIHA/ Public Health Nurses to increase family literacy*

Strategies	Resources
------------	-----------

<ul style="list-style-type: none"> • Contact VIHA and understand current Books For Babies programming and home visits • Contact VIHA management to converse on potential of interweaving literacy into interactions of Public Health Nurses with the public • Hold focus meeting with Public Health Nurses to discuss literacy and how/ when/ where Public Health Nurse could facilitate connections with parents of young children and literacy support/programming • Explore potential partnerships with Public Health Nurses and Outreach Coordinator 	<ul style="list-style-type: none"> • Literacy Outreach Coordinator • VIHA
--	---

Evaluation: developing working partnership between the Literacy Outreach Coordinator and Public Health Nurses

Timeframe: Long term

Objective #5.4: *to create regular communications with interested community partners*

Strategies

- Create regular updates on literacy in the community
- Literacy Coordinator to attend regular Regional Literacy Advisory meetings and monthly Sooke Region CHI meetings
- Literacy coordinator to attend other community meetings, if relevant, or facilitate specific literacy meetings for interested partners

Resources

- Literacy Outreach Coordinator

Evaluation: increased communication and awareness of community programming among community partners

Timeframe: ongoing

Goal #6: To increase community awareness in regards to literacy issues and literacy services available

Objective #6.1: *Create a Sooke Literacy website*

Strategies

- Enlist help of senior high school student or contract to web manager to create a Sooke Literacy website
- Website to have links to literacy agencies and relevant, current information, possible chat area
- Plan to ensure website is regularly

Resources

- Literacy Outreach Coordinator
- Volunteer Advisory Committee
- Literacy Now funding
- Community volunteers (i.e. students)

<p>updated</p> <ul style="list-style-type: none"> • Advertise and market website address within community 	
Evaluation: creation of website	
Timeframe: Long term	
Objective #6.2: <i>To have a regular literacy column in the local newspaper</i>	
<p>Strategies</p> <ul style="list-style-type: none"> • Contact Sooke News Mirror with proposal of regular literacy column • Literacy Outreach Coordinator to write column • Column could be book review, information on literacy agencies 	<p>Resources</p> <ul style="list-style-type: none"> • Literacy Outreach Coordinator • Sooke News Mirror
Evaluation: regular literacy column in local paper	
Timeframe: Long term	
Objective #6.3: <i>To participate in annual local events- Sooke Rotary Auction and Sooke Fall Fair, to promote literacy awareness</i>	
<p>Strategies</p> <ul style="list-style-type: none"> • Secure attendance at events • Create visually interesting and interactive presentation board and set up to be used at events • Secure sub-committee to volunteer to oversee manning the booths • Potential for creating literacy event in community i.e. "Word on the street", Family Literacy Week 	<p>Resources</p> <ul style="list-style-type: none"> • Literacy Outreach Coordinator and Volunteer Advisory Committee • Literacy BC website: www2.literacy.bc.ca
Evaluation: participation in 2 annual local events	
Timeframe: Ongoing	
Objective: <i>to distribute literacy assets inventory resource and website address to community members</i>	
<p>Strategies:</p> <ul style="list-style-type: none"> • Create a document from literacy assets inventory which lists program description, contact details, location, cost, bus routes, etc. • Partner with community organizations to distribute document i.e. Welcome wagon, VIHA, congregations, visitor information, chamber of commerce • Create a plan for updating document • Approach District of Sooke to explore potential of signage for the Town to display referral information for literacy support 	<p>Resources</p> <ul style="list-style-type: none"> • Literacy Outreach Coordinator

Evaluation: creation of document and distribution plan	
Timeframe: Long term	
Objective: <i>create a community bulletin board specifically for literacy related information</i>	
Strategies: <ul style="list-style-type: none"> • Identify high traffic public areas i.e. grocery stores, retail, liquor store, recreation centre • Follow appropriate procedures to ensure allowable use of space • Create highly visible bulletin board • Post with easy to read or picture images information related to literacy • Ensure that it is visually appealing, well cared for and current • Look at disguising “literacy” term to make it more appealing 	Resources: <ul style="list-style-type: none"> • Literacy Outreach Coordinator
Evaluation: creation of community literacy bulletin board	
Timeframe: Long term	

PORT RENFREW COMMUNITY LITERACY PLAN

THE PROCESS

The Literacy Now process was initiated by an Expression of Interest submitted by the Sooke School District #62 in December 2007. This expression of interest included the areas from East Sooke to Port Renfrew.

In December 2007 a job posting was advertised for the position of Community Literacy Coordinator. Gillian Petrini was hired for the position and began in January 2008.

Throughout the months of February and March, a number of meetings were held with the established task group to prepare for the Literacy Now Launch meeting. This preparation involved creating a contact list, sending out invites, notifying media, organizing location and materials, etc. The Launch was held on April 8th and was attended by 50 community members. The evening generated information regarding the current programs in place and the community hopes and dreams for the future. The evening also brought forward a number of community members to join the task group, become community partners and supporters. There was one representative from the Pacheedaht First Nation.

It was apparent that due to the distance to Port Renfrew, attendance from Port Renfrew community members at meetings would be difficult and that gathering community input would be a challenge. It was decided by the task group to pursue the potential of Port Renfrew having their own community plan. After discussions with Leona Gatsby, 2010 Legacies Now, it was determined that in order to have a separate plan, the Port Renfrew community would need to submit their own expression of interest and take responsibility for the process. After many contacts with various members of the Port Renfrew community, there was no one in the position to take on the additional work of the Literacy Now process. Due to the uniqueness of the Port Renfrew community, it was still important to the task group to have specific goals to address literacy issues for this area. A compromise was reached by deciding to have a separate chapter within the Sooke literacy plan dedicated to the needs of Port Renfrew. Literacy Now provided funding to allow for this additional focus. Ongoing communication and updates were made between community representatives in Port Renfrew and the Community Literacy Plan Coordinator.

During the summer months, the coordinator focused on gathering information from community members and organizations to create the Literacy Assets Inventory. This time was also devoted to summarizing demographic and statistical information in a Community Profile for the areas designated in this plan.

In the fall, the process of planning a community meeting for Port Renfrew began. In early December 2008, the Community Literacy Plan Coordinator traveled to Port Renfrew and hosted a community discussion on literacy issues in the area. During this meeting, strengths, gaps, challenges and needs were identified for each age grouping. There were opportunities to provide input and feedback and all members discussed and agreed upon the areas of focus identified for the literacy plan. This led to the creation of key goals and the production of relevant actions to be completed in order to meet the goals. This was the foundation of the Port Renfrew Literacy Action Plan.

The draft action plan was sent back to participants and distributed to interested community members for feedback and approval.

PARTICIPANTS OF THE PORT RENFREW LITERACY NOW PLANNING PROCESS

Those involved in the Literacy Now initiative were updated on the process through whichever means were most suitable, i.e. email, phone, mail. Meetings were held in a location that was wheelchair accessible and meeting times aimed to accommodate as many different schedules as possible.

PORT RENFREW LITERACY NOW PARTICIPANTS
Donna Jones- Pacheedaht Band
Dorothy Jones- Pacheedaht Band
Kristy Green- Port Renfrew Elementary
John Schell- Port Renfrew Beach Camp
Dustin Ross- San Juan Collective
Shannon Streit- Port Renfrew Health and Social Services Society
Denise Chewka- Pacheedaht Band

COMMUNITY PROFILE

LOCATION AND DESCRIPTION

Port Renfrew is the last community at the end of Highway 14, approximately 110 km northwest of Victoria. The road to Port Renfrew is a winding scenic drive along the west coast of Vancouver Island. It is a narrow two lane highway, sometimes one lane in areas, and can be quite treacherous in poor weather conditions. The drive in and out leaves Port Renfrew a very secluded, often isolated community.

The village of Port Renfrew has approx. 400 residents and offers limited services, such as accommodations, groceries, restaurant, pub, recreation centre, library and some retail. Port Renfrew has a growing recreational tourism industry and is home to a number of fishing charters and other adventure touring businesses. There is one elementary school and various community services offered in Port Renfrew.

This area is the ancestral home to the Pacheedaht First Nations, who have 100 First Nations members living adjacent to the village. The Pacheedaht First Nation has 4 reserves on 174 hectares, approximately 110 km from Victoria. Facilities on reserve include a Band Office, longhouse and campground.

HISTORY

This area is the territorial land of the Pacheedaht First Nations. This land, known as the San Juan Valley, began attracting large scale logging operations in the mid 1930s. The Malahat Logging Company built a railway line from their beach camp, extending 22 km to beyond the Bear Creek Valley. Beach Camp was located where the present Port Renfrew town site is today.

EDUCATION

Port Renfrew has an elementary school which has 22 students from Kindergarten to Grade 5. There are two teachers at this school and visiting specialists, including a Speech and Language Pathologist, Occupational Therapist and Physio Therapist. After Grade 5, students must travel by bus to Sooke for both middle school and secondary school.

There are adult education programs offered through the Pacheedaht First Nations. Other services require travelling to the Town of Sooke or even further into the city of Victoria, over 110km away.

ECONOMY

Forestry has been the long-standing economic force in this region, but extensive harvesting in the forest industry has led residents to find other economic activities in the area. The tourism sector is being promoted to help address this need.

Visitors come to this region to experience the beauty and ruggedness of the west coast. Port Renfrew is the starting point for the West Coast Trail, the popular 77 km trail between Port Renfrew and Bamfield. Tourism activities have flourished in this region due to the popularity of the Trail. The area offers many beautiful beaches. Sombrio beach, southeast of Port Renfrew, is a popular destination for surfers. One of the reasons for Sombrio's popularity is its location within 100km from Victoria.

SUMMUARY OF LITERACY ASSETS INVENTORY

Port Renfrew

BIRTH TO AGE 5: PRENATAL, PERINATAL, UP TO KINDERGARTEN

Assets and Opportunities:

There are numerous programs offered in Port Renfrew, both on the Pacheedaht reserve and within the village of Port Renfrew. On the Pacheedaht reserve there are programs for the 0-5 age group. This includes a preschool and kindergym programs which is funded by the Pacheedaht and is at no cost to families. The Port Renfrew Health and Social Services Society (PRHSSS) offers baby days which take place once a week and partners with the Vancouver Island Health Authority (VIHA). The PRHSSS also provides an open environment for various programs and services, including free games and recreation area, as well as a community free store for various home and clothing items. As well, the local library is open throughout the week.

Challenges and Gaps:

- Create more Family Literacy programs involving parents

Needs:

- Get children hooked on reading

Areas of Focus

Get children/ youth hooked on reading

Early year's intervention

Create a community centre/ school

ELEMENTARY (6-11) AND MIDDLE SCHOOL (12-15) YEARS

Assets and Opportunities:

The Port Renfrew Health and Social Services Society provides a safe environment for children and youth. This centre offers various programs such as a youth program for ages 7-18yrs, offered 6 days a week. There is also a Summer Youth Program with various out trips such as trips to Horne Lake, Parksville, Forest Museum and Lizard Lake. There are also a number of services at PRHSSS, including free games and recreation area, a community free store for various home, books and clothing item and 4 computers with internet access. The local library is open throughout the week

providing the opportunity for this age group to take out books. Students in Kindergarten to Grade 5 attend the local elementary school. This school has 22 students within 2 classrooms. Port Renfrew elementary has 2 teachers, a regular visiting Speech and Language Pathologist and occasional trips from the Occupational and Physio therapist. There is also an afterschool programs for these students. At the middle school levels, Grades, 6-8, students must bus to Journey Middle School in Sooke. The bus leaves at approx 7 and returns to Port Renfrew at 4:45pm. There are programs outside of Port Renfrew that this age group can access. These include SEAPARC afterschool program which offers assistance with homework. There is a bus, funded by Community link, which leaves late on Fridays to allow for students to participate in this afterschool program.

Challenges and Gaps:

- Create more Family Literacy programs involving parents, teaching parents literacy strategies for teaching their own children
- Middle school outside of the community
- No local tutoring program

Needs:

- Understanding students difficulties with travelling everyday to middle school
- Better transition periods between elementary and middle school
- Local programs
- Get youth hooked on reading

Areas of Focus

Get youth hooked on reading

Create safe, learning environments

Better transition to middle school, alternate education options (including looking at Lake Cowichan as district for junior, senior secondary)

Create a community centre/ school

Local tutoring/ mentorship, more local youth programs

SECONDARY/ YOUNG ADULT: AGES 16-19

Assets and Opportunities:

The Port Renfrew Health and Social Services Society provides a safe environment for youth. This centre offers various programs such as a youth program for ages 7-18yrs, offered 6 days a week. There is also a Summer Youth Program with various out trips such as trips to Horne Lake, Parksville, Forest Museum and Lizard Lake. There are also a number of services at PRHSSS, including free games and recreation area, a community free store for various home, books and clothing item and 4 computers with internet access. The local library is open throughout the week providing the opportunity for this age group to take out books. For secondary school Grades 9-12, students must bus to Edward Milne Community School in Sooke. The bus leaves at approx 7 and returns to Port Renfrew at 4:45pm. There are programs outside of Port Renfrew that this age group can access. These include SEAPARC afterschool program which offers assistance with homework. There is a bus, funded by Community link, which leaves late on Fridays to allow for students to participate in this afterschool program.

Challenges and Gaps:

- Engaging local youth
- Secondary school outside of the community
- No local tutoring programs

Needs:

- Understanding students difficulties with travelling everyday to middle school
- Better transition periods between middle school and secondary school
- More local programs that engage youth
- Get youth hooked on reading

Areas of Focus

Get youth hooked on reading

Create safe, learning environments

Better transition to middle school, alternate education options (including looking at Lake Cowichan as district for junior, senior secondary)

Create a community centre/ school

Local tutoring/ mentorship, more local youth programs

ADULT: AGES 20+

Assets and Opportunities:

The Pacheedaht First Nations offers many programs and services including: Adult Education programming. In partnership with Sooke School District #62 provides Adult Education program, runs Tues, Wed, Thurs 3hrs a day, 4hrs on Wed, course include math, English, Home Economics, PE, Native Art- carving, paddles, cedar bark stripping. There is also a Community Kitchen which cooks lunches every day, Employment Opportunities assistance, a Community Garden, a Good Food Box program and childcare services. The PRHSSS offers various programs and services, including free games and recreation area, as well as a community free store for various home and clothing items. They also have 4 computers all with an Internet connection, word processors, image editors and much more. Volunteers on staff to help set up email accounts, help surf the net, and learn about computers in general.

Challenges and Gaps:

- Create more Family Literacy programs involving parents, teaching parents how
- Local tutoring and mentorship programs

Needs:

- Create more Family Literacy programs involving parents, teaching parents how
- Local tutoring and mentorship programs

Areas of Focus

Create a community centre/ school

Local tutoring/ mentorship

PORT RENFREW LITERACY NOW ACTION PLAN

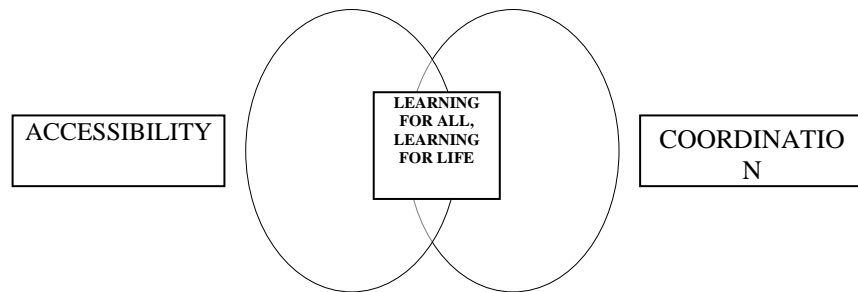
AREAS OF FOCUS

Coordination

Goal #1: *To coordinate the development and implementation of the Port Renfrew literacy plan, ensuring program financial sustainability and broad community participation.*

Accessibility

Goal #2: *Create opportunities for tutoring services to be available within the community*
Goal #3: *Increase literacy related programs and services in the community for families, youth, children.*



Goal #1: To coordinate the development and implementation of the Port Renfrew literacy plan, ensuring program financial sustainability and broad community participation.

Objective #1.1: To hire a Literacy Outreach Coordinator to oversee implementation and evaluation of literacy plan.

<p>Strategies</p> <ul style="list-style-type: none"> • Establish head agency to oversee coordinator and who coordinator will report to • Establish steering committee • Create detailed job description • Develop hours and details of contract • Post ad- local papers, websites, etc. • Interview and select appropriate candidate 	<p>Resources</p> <ul style="list-style-type: none"> • Local community agency • Sooke Community Literacy Plan Coordinator • 2010Legacies Now- online resource for job description and details
---	--

Evaluation: when Literacy Coordinator position has been filled

Timeline: Short term

Objective #1.2: To develop Volunteer Advisory committee to support literacy coordinator

<p>Strategies</p> <ul style="list-style-type: none"> • ask those already involved in Sooke Literacy Now initiative • create expectations/ guidelines for membership 	<p>Resources</p> <ul style="list-style-type: none"> • Literacy Now task group, community partners, supporters
--	---

Evaluation: when Volunteer Advisory committee has been formed to support Literacy Outreach Coordinator

Timeline: Short term

Goal #2: Create opportunities for tutoring services to be available within the community

Objective #2.1: To find capable volunteers within the Port Renfrew community to offer their time to tutor others in the community

<p>Strategies</p> <ul style="list-style-type: none"> • Create simple criteria for advertising for available tutors • Advertise for volunteers in school newsletter, rec. centre newsletter, mail out, posters • Ensure that available tutors meet criteria and are appropriate candidates 	<p>Resources</p> <ul style="list-style-type: none"> • Literacy Outreach Coordinator • PRHSSS
---	---

Evaluation: Identify one or two available and capable tutors

Timeline: Long term

Objective #2.2: Create tutor training workshop opportunities

<p>Strategies</p> <ul style="list-style-type: none"> • Contact READ Society and Literacy 	<p>Resources</p> <ul style="list-style-type: none"> • Literacy Outreach Coordinator
--	---

<p>Victoria to see if they would be interested in providing tutor training</p> <ul style="list-style-type: none"> Find available funding for workshop-potential from builders/ developers coming to the area 	<ul style="list-style-type: none"> READ Society, Literacy Victoria
Evaluation: Find tutor training workshop opportunities for Port Renfrew tutor volunteers	
Timeline: Long term goal	
Objective #2.3: Partner trained tutors with community members in need of literacy support	
<p>Strategies</p> <ul style="list-style-type: none"> Advertisements and word of mouth, availability of tutors Create drop in time for tutoring session or signup sheet Tutoring time held at local venue i.e. Rec. centre ensure parental involvement and even participation 	<p>Resources</p> <ul style="list-style-type: none"> Literacy Outreach Coordinator PRHSSS
Evaluation: Community tutors supporting literacy needs of others in the community	
Timeline: Long term	

Goal #3: Increase literacy related programs and services in the community for youth and children	
Objective #3.1: Offer weekly or monthly story time program to children	
<p>Strategies</p> <ul style="list-style-type: none"> Ask rec. centre or library if there is an available time and space for story time to occur Find local community volunteer to read story to young children Negotiate a commitment of time and duration of program Explore potential of Mother Goose program 	<p>Resources</p> <ul style="list-style-type: none"> Literacy Outreach Coordinator and Volunteer Advisory Group Community volunteers in Port Renfrew
Evaluation: Weekly or monthly story time consistently being offered	
Timeline: Long term	
Objective #3.2: Partner with PRHSSS to identify what additional youth programs and services would be best suited to engage the youth of the community	
<p>Strategies</p> <ul style="list-style-type: none"> Partner with the Port Renfrew Recreation Centre Identify programs already being offered Look at what other programs/ events could be put in place i.e., games nights, crafts, community dances, fashion shows, talent show 	<p>Resources</p> <ul style="list-style-type: none"> Literacy Outreach Coordinator Community Volunteers PRHSSS

<ul style="list-style-type: none"> • Talk to the youth to find out what they want • Identify top priority programs 	
Evaluation: identify top three priority programs or services for the youth of the community	
Timeline: Long term	
Objective #3.2: <i>Partner with PRHSSS to identify strategies and resources needed to provide additional youth programs and services</i>	
Strategies <ul style="list-style-type: none"> • Identify strategies and resources needed to implement each program/ event/ service • Commit to one program and begin gathering resources 	Resources <ul style="list-style-type: none"> • Literacy Outreach Coordinator • Community Volunteers • PRHSSS
Evaluation: Successfully implement one program/ service or event	
Timeline: Long term	

References

BC Ministry of Education. (2005) *BC Ministry of Education SD 62 Data*. BC Ministry of Education, Canada.

Capital Regional District, (2008). *Juan de Fuca Electoral Area*. Retrieved August 2008 from www.crd.bc.ca.

Capital Regional District. (2007). *CRD Transportation and Health Initiative Final Report*. Retrieved January 2009 from www.crd.bc.ca.

Conference Board of Canada. (2008). *About Workplace Literacy and Basic Skills*. Retrieved April 2008 from www2.conferenceboard.ca/workplaceliteracy/about-skills.asp.

District of Sooke. (2008). *Welcome to the District of Sooke*. Retrieved August 2008 from www.sooke.ca.

Eastsooke.com. (2008). *EastSooke.com*. Retrieved August 2008 from www.eastsooke.com.

Literacy BC. (2008). *Making Literacy Everyone's Responsibility*. Retrieved April 2008 from www2.literacybc.ca.

Partnership in Learning and Advocacy for Young Children. (2007). *The Westshore Early Years Report*. Victoria, BC: Partnership in Learning and Advocacy for Young Children.
School District #62. (2007). *School District #62 Transitional District Literacy Plan*. School District #62, Sooke, BC.

Sooke Region Community Health Information Project/ Community Health Initiative.
Statistics Canada. (2006). *2006 Community Profiles*. Retrieved August 2008 from www.statcan.ca.

West coast Aquatic, (2008). *Pacheedaht First Nation*. Retrieved August 2008 from www.westcoastaquatic.ca/Pacheedaht.htm.

2010 Legacies Now. (2006). *2010 Legacies Now- Community Literacy Planning Guide*. Vancouver, BC: 2010 Legacies Now.

APPENDIX A
SOOKE LITERACY ASSETS INVENTORY

Sooke Family Resource Society : Parent-Child Mother Goose										
Target Clientele	When?	"served (yearly)	staff	Funding	Successes	Future Goals	Bu s	\$	Re f	CC A
0-5	weekly	2 sess 16 fam 1p+ 1c =64 total	2 trained Mother Goose Facilitators/ per program	Success by 6	Increased support networks for families Increased literacy opportunities for children Increased access to information for parents	Obtain increased funding for ongoing services/ staffing requirements	Y	N	N	Y
<p>Program Details: The Parent-Child Mother Goose Program is funded by 'Success by 6' and is delivered in partnership with the Neighborhood House Coalition. This program is a group experience for parents and their babies or young children that focus on building attachment and early literacy skills through using rhymes, songs and stories. Parents gain skills and confidence which can enable them to create positive family patterns during their children's crucial early years, and give their children healthy early experiences with language and communication. The Parent-Child Mother Goose Program levels at SFRS are: Infant Program: 0-18 months, Toddler Program: 18 months- 3 years , Preschool Program: 3-5 years</p>										
Partnerships: Success by 6										

Sooke Family Resource Society: Ready, Set Learn										
Target Clientele	When?	"served (yearly)	staff	Funding	Successes	Future Goals	Bu s	\$	Re f	CC A
3 yrs	yearly	55 total	1 SFRS staff 1 VIHA Health Nurse Principal/ Teachers	School District #62, MCFD, Ministry of Ed, Ministry of Health	Increased support networks for families Increased literacy opportunities for children Increased access to information for parents	Obtain increased funding for ongoing services/ staffing requirements	Y	N	N	Y
<p>Program Details: Ready, Set, Learn! is a pre-literacy and school readiness early childhood initiative for three-year old</p>										

children co-sponsored by the Ministry of Education, the Ministry of Children and Family Development and the Ministry of Health Services. At RSL families can obtain information regarding the elementary school system and community agencies that provide early childhood development resources, support and services.										
Partnerships: Sooke School District- principals and teachers (John Muir ???)										
Strong Start BC- John Muir Elementary										
Target Clientele	When?	“served (yearly)	staff	Funding	Successes	Future Goals	Bu s	\$	Re f	CC A
Preschool aged	Daily	40 children and caregivers	Certified Early Childhood Educator	Ministry of Education	Pilot project conducted in May and June	New program to start in September	Y	N	N	N
<p>Program Details: Strong Start BC is a free, drop-in early learning program for preschool aged children accompanied by a parent or caregiver. Qualified early childhood educators lead learning activities, including stories, music and art to help children get ready for success in kindergarten. Parents and caregivers attending Strong Start BC centres can expect to participate in organized sessions like story time, in play activities, and in serving a healthy snack. Parents and caregivers are likely to discover new ways to support their children’s learning at home, and may make valuable connections with others attending the centre.</p> <p>http://www.bced.gov.bc.ca/literacy/early_learning/strongstart_bc.htm</p>										
Partnerships: BC Ministry of Ed, School District #62										

Sooke Family Resource Centre: TD Book Bank										
Target Clientele	When?	“served (yearly)	staff	Funding	Successes	Future Goals	Bu s	\$	Re f	CC A
Children and Family	Daily	First year open	SFRS Staff, CASA receptionist	TD Canada Trust	Increased literacy opportunities for children Increased access to information for parents	Open longer hours, more accessible to those who work	Y	N	N	Y
<p>Program Details: The TD Book Bank is a partnership between the Queen Alexandra Foundation, the Sooke Family Resource Society and TD Canada Trust. The book bank is a lending library service for children and families in the Sooke</p>										

community. The library includes a variety of parenting resources, picture books and literacy software.

Partnerships: Queen Alexandra, SFRS, TD Canada Trust

Sooke Family Resource Centre: Drop in Programs- Parent Tot, Day care Drop in, Friday Play Group										
Target Clientele	When?	“served (yearly)	staff	Funding	Successes	Future Goals	Bu s	\$	Re f	CC A
0-5	Weekly	250	SFRS staff	(CAPC) Capital Children’s Coalition Donations	Reducing isolation, parent support, resources, networking, modeling, socialization for children	Ongoing funding, standardized programming for Neighbourhood Houses, links with families on reserves	Y	Y/N	N	Y
Program Details: Parent- Tot drop in- structured play experiences, art and circle time , Daycare Drop In- drop in for children, support and ideas for parents from CRR consultants, Friday Play Group- structured drop in playgroup for parents and children with free play, arts, crafts and circle time										
Partnerships:										

Daycares and Preschools										
Target Clientele	When?	“served (yearly)	staff	Funding	Successes	Future Goals	Bu s	\$	Re f	CC A
0-5	Daily	250	Care Providers, ECE, assistants	Monthly payments			Y/N	Y	N	N
<p>8 Sooke Day Care Providers-License not required (3-4 children ages 0-5)= approx. 32 children Charlie Brown Childcare, Daffy Ducks, Mom Bear Daycare, 4 no titles, Little Buckaroos 10 Licensed Family (7 children max ages 0-5)=70 Busy Bees, Cuddle Bugs, Hand in Hand, Happy Face, Kid’s Cottage, Moondance Family Childcare, Oopsie Daisy, Radsma Family Daycare, Wishing Tree Childcare, 1 no title Licensed Group (0-5- may include infant toddler, 3-5 year olds, out of school care, preschool, kindercare) ratio 1-8 usually 2 caregivers: Kingfisher preschool (54 children ages 3-5) Kingfisher out of school program (6 children ages 6-11), Playland daycare and out of school care (70 children), Sooke Montessorri Preschool, Sooke Preschool Association Sum’Sha Thut’ Lellum after school care,</p>										

Sunriver Child Care Centre (30 children), Doodlebug Preschool (SEAPARC)- approx 30 ages 3 and 4

Partnerships:

TSouke First Nations- preschool, kindergarten, afterschool care										
Target Clientele	When?	"served (yearly)	staff	Funding	Successes	Future Goals	Bu s	\$	Re f	CC A
0-5	Daily	30-35	2.5	INAC and SD62	Full program/early learning opportunities esp. for TN children/yrly waiting lists	offer schooling Kindergarten to Grade 5	Y	Y	N	N
Program Details: Kindergarten enrollment through SD62, preschool and after school care enrollment at TN band office										
Partnerships: School District 62										

School District #62- Early Learning Initiatives Committee

Program Details:
Collaborative networking of those agencies and organization involved in Early Childhood learning including SD62 and community representatives such as PVP, CUPE. STA and parents

SEAPARC Leisure Complex- preschool programs and services										
Target Clientele	When?	"served (yearly)	staff	Funding	Successes	Future Goals	Bu s	\$	Re f	CC A
0-5	Daily weekly month yearly	District of Sooke and JDF elec. area	Instructors, contractors and volunteers	Supported through taxes and program/ service fee	Participation numbers in our recreation classes	Continue to serve the community	Y	Y	N	N
Program Details: www.crd.bc.ca/seaparc/program										
Partnerships: various community partnerships depending on program/ service offered										

Sooke Regional Museum										
Target Clientele	When?	“served (yearly)	staff	Funding	Successes	Future Goals	Bu s	\$	Re f	CC A
Gen. pop	Daily	35,000 to 40,000	Staff and volunteers	Largely volunteer, corporate support, small	-great number of people using the museum and accessing resources	Continue to serve area to the whole area in the best way possible and promote cultural knowledge and understanding of heritage	Y	*	N	N
<p>Program Details: twice a year (Nov/ Dec May/ June) programs are offered to local schools (used by preschool K-elementary, sometimes high school for special projects), American schools also visit, extensive resource library, archives, Sooke News Mirror from beginning to present, research material, participate in various events such as Sooke Fall Fair, interactive with many organization, Spirit of BC (Literacy competition for students), produced several books, host exhibits</p> <p>*entrance by donation</p>										
<p>Partnerships: many community agencies and organizations</p>										

VIHA: Books for Babies										
Target Clientele	When?	“served (yearly)	staff	Funding	Successes	Future Goals	Bu s	\$	Re f	CC A
Babies	When born	approx 150	Nurse deliver with routine home visits	Gov’t , sponsors	Parents like the books, its often their babies first book		Y	N	N	Y
<p>Program Details: Program Details: Bookbag from VIRL for all new babies born in Sooke. Includes board book, music CD, pamphlets from library, DVD re: early literacy. Not really a VIHA program-nurses encourage parents to access library and attend local play groups</p> <p>****All newborns are screened at birth in the hospital or at the Hearing Clinic in Westshore Health Unit if they miss it. Then if parents have concerns throughout childhood, they can contact the Hearing Clinic directly or by referral for assessment anytime. At Kindergarten level, there's a basic hearing and vision screening done at school (by VIHA staff) and referrals are made as necessary. All children under 19yrs are eligible for free yearly eye exams at the optometrist. This is covered under the medical plan. Hearing</p>										

screenings can be done by VIHA on request for school aged children (usually done through the schools with referrals from teachers/parents).

Partnerships: VIRL

Vancouver Island Regional Library- Sooke Branch- Preschool Story time										
Target Clientele	When?	“served (yearly)	staff	Funding	Successes	Future Goals	Bu s	\$	Re f	CC A
0-5	weekly	10 per session	VIRL employees	Local taxes, some prov. funding	Use of the library	Offer more adult and children’s programs	Y	N	N	Y
Program Details: Public Library open to the public 6 days a week, offers various children’s programming including Preschool storytime										
Partnerships: Public Library Services Branch of the Prov Govt										

Vancouver Island Regional Library- Sooke Branch- Summer Reading Club										
Target Clientele	When?	“served (yearly)	staff	Funding	Successes	Future Goals	Bu s	\$	Re f	CC A
3-12	weekly	75	VIRL employees	Local taxes, some prov. funding	Use of the library	Offer more adult and children’s programs	Y	N	N	Y
Program Details: Public Library open to the public 6 days a week, offers various children’s programming including a Summer Reading Club										
Partnerships: Public Library Services Branch of the Prov Govt										

Vancouver Island Regional Library- Sooke Branch- Literacy Theme Kits										
Target Clientele	When?	“served (yearly)	staff	Funding	Successes	Future Goals	Bu s	\$	Re f	CC A
0-5	daily	6 kits avail.	VIRL employees	TC grant		Increase number of kits available	Y	N	N	Y
Program Details: Public Library open to the public 6 days a week, themed library resource kits with books, puppets, CD’s,										

DVD's as well as early literacy resource handbook full of fun activities, appropriate for one on one sharing as well as in group situations

Partnerships: Public Library Services Branch of the Prov Govt, Times Colonist Raise a Reader Grant

OFFSITE PROGRAMS/SERVICES

Military Family and Resource Centre (Colwood and Esquimalt)- prenatal- preschool programs

Target Clientele	When?	"served (yearly)	staff	Funding	Successes	Future Goals	Bu s	\$	Re f	CC A
Military population	Daily/ weekly month yearly	500 families	Instructors, counselors,	Federal gov't			Y	N	N	Y

Program Details: Prenatal: pregnancy and labour companion program, Getting Ready for Baby 0-5: music programs, short term intervention and crisis support ie. rainbow program (grief and loss), Mother Goose, Parent, Baby and Toddler Groups, daycare and respite child care, preschool, French story time, Read me a Bedtime story (video taping parent reading story to child), various recreational programs

Partnerships: Federal Government

Elementary (6-11)/ Middle (12-15)

Boy Scouts and Girl Guides

Target Clientele	When?	"served (yearly)	staff	Funding	Successes	Future Goals	Bu s	\$	Re f	CC A
10-14 years	weekly		Coordinators, leaders and volunteers	Royal Canadian Legion			Y	uniform	N	N

Program Details: Scouting's Mission is achieved by: involving youth throughout their formative years in a non-formal educational process. , using a specific method that makes each individual the principal agent in his or her development as a self-reliant, supportive, responsible and committed person. ,assisting youth to establish a value system based upon spiritual, social and personal

Partnerships: Royal Canadian Legion



Junior Youth Empowerment Program										
Target Clientele	When?	“served (yearly)	staff	Funding	Successes	Future Goals	Bu s	\$	Re f	CC A
11-14 yrs	Weekly		2 volunteers	Sooke Baha'i community	completed a workbook focusing on literacy, youth also made a video for elementary schools (community service project)	Completion of the next workbook which focuses on literacy and the development of values and morals.	Y	N	N	N
<p>Program Details: The Junior Youth Empowerment Program (http://www.devlp.com), meets at Journey Middle School every Wednesday from 3:00 – 5:00. Benefits of the program will include more community engagement on the part of junior youth in the neighborhood, a sense of global citizenship and appreciation for unity within the community’s diversity. A typical meeting consists of; studying the curriculum, games, arts, science activities, and the planning of service projects. The program will assist the junior youth in: enhancing the power of expression, developing higher levels of literacy, recognizing the moral issues underlying every day decisions and identifying the moral implications of speech and action, gaining an appreciate for service through service projects, building self-esteem and assisting in withstanding negative peer pressures, creating the identity of being a world-citizen</p>										
Partnerships: Sooke Baha'i Community										

P.A.R.T.N.E.R.S.- Parents Are Ready to Teach and Nurture Effective Reading Skills										
Target Clientele	When?	“served (yearly)	staff	Funding	Successes	Future Goals	Bu s	\$	Re f	CC A
Parent, children 6-11	Daily	50	Teachers	Grants, school funds, donations	Kids become readers!		Y	N	N	N
<p>Program Details: P.A.R.T.N.E.R.S. stands for Parents Are Ready to Teach and Nurture Effective Reading Skills. I created the program to be able to reach more students who were struggling to read than I was able to do on my own. We know that children who are struggling are much more successful when they can have intensive one-on-one support. I was unable to provide that type of service when I was a learning assistance teacher as there were too many kids to fit into my daily schedule. I began training parents so that the parents could do the one-on-one daily work and I could do the weekly conferencing with the students, assessing their reading level and support the parents. The more I worked with this philosophy and the more parents I engaged, the more success I was seeing. I have been using the program for three years now.</p>										
Partnerships: None										

RCMP- D.A.R.E. Drug Abuse Resistance Education										
Target Clientele	When?	"served (yearly)	staff	Funding	Successes	Future Goals	Bu s	\$	Re f	CC A
Grade 5 Grade 7	1hr week for 10 weeks grad at end	300+ youth	4 Sooke RCMP officers	Private donation and annual donation by Sooke Rotary	The positive relationships found btn youth and police Having older kids / adults say how if helped them in making good choices		Y	N	N	N
Program Details: Teaches kids harmful effects of drug abuse and tobacco. Learn process of making decisions, peer pressure, ways to say no, friendships, effects of media (workbook used).										
Partnerships: Sooke School District, RCMP										

Rotary Club of Sooke										
Target Clientele	When?	"served (yearly)	staff	Funding	Successes	Future Goals	Bu s	\$	Re f	CC A
youth	school year	all schools in School District 62	Fleur Harvey-Kelly: Chair of the Sooke Rotary Literacy Committee Karen Mason: Member of the Sooke Rotary Literacy Committee		Provide money to all Schools in District 62 to purchase books. We donate a book and dedicate it to one of our Speakers. Number of books donated to date is approximately 250. Sponsored initial Sooke Literacy Now Forum. International sponsor	Identify needs of the community and set initiatives accordingly.		*		

					of girls school in Malawi.					
Program Details: as detailed above *\$2000 per year approx \$2000 per year for our books in the school program from the Sooke Rotary Club of Sooke. plus provide approximately \$6000 in scholarships and one \$500 bursary to graduating students from EMCS. Contact Information:Fleur Harvey-Kelly, Cell: 250-858-5012E-mail: fleur@wesltd.net										
Partnerships: To Be Announced										

SEAPARC Leisure Complex- youth programs and services										
Target Clientele	When?	“served (yearly)	staff	Funding	Successes	Future Goals	Bu s	\$	Re f	CC A
6-11, 12-15	Daily weekly month yearly	District of Sooke and JDF elec. area	Instructors, contractors and volunteers	Supported through taxes and program/ service fee	Participation numbers in our recreation classes	Continue to serve the community	Y	Y	N	N
Program Details: www.crd.bc.ca/seaparc/program Youth Action night (games, pool, food, video games etc.) - Friday nights ages 11-14 approx 75 youth attend and Saturday nights ages 13-15 approx 20-25 attend										
Partnerships: various community partnerships depending on program/ service offered										

Sooke Family Resource Centre- After School Care										
Target Clientele	When?	“served (yearly)	staff	Funding	Successes	Future Goals	Bu s	\$	Re f	CC A
6-11	daily		Staff: Early Childhood Educators, Program Assistants	Funder: Parent Fees, Operating Grants			Y	Y	N	N

Program Details: The school age group is licensed for 10 children. The program is recreation based and includes life skills activities and homework support. Also with this age group Kingfisher places high emphasis on emotional and social skills development.

Partnerships:

Sooke School District #62- Elementary Schools

Sooke Elementary School

Target Clientele	When?	"served (yearly)	# of staff	Funding	Successes and Future Goals	Bu s	\$	Ref	CC A
6-11yr K- Gr 5	M-F	approx 200	11 teachers 10 Support Staff 1 Administrator	Ministry of Education through School District #62	Student successes (measured by standard classroom assessments), communication with families, students, professionals Offer more services for what we refer to as the "grey area" students – students that are not progressing at average pace, but are able to complete assignments, work with friends etc at the younger grades, but as they get older struggle more and more to understand both non-fiction and fiction print. Retention and transfer of comprehension skills (basic understanding of print) becomes more challenging	Y	N	N	N

John Muir Elementary

6-11 k-Gr 5	M-F	176	Teachers, Support Staff, Admin	Ministry of Education through School District #62	StrongStart initiative and the PARTNERS program	Y	N	N	
----------------	-----	-----	--------------------------------------	---	---	---	---	---	--

Saseenos Elementary

6-11 K- Gr 5	M-F	120	Teachers, Support Staff, Admin	Ministry of Education through School	Sooke Parents Book Club- offered by retired teacher, runs workshop four week book club for parents, parent as teacher,	Better classroom libraries and home reading programs More literacy events for parents ie. authors in	Y	N	N	Y
--------------------	-----	-----	--------------------------------------	---	--	---	---	---	---	---

				District #62	parenting education re: learning (10participants at \$40 in October) Partnership with Big Brothers program targets students in school- teen mentors Montesorri Preschool TSouke Preschool connection (new)	residence				
--	--	--	--	--------------	--	-----------	--	--	--	--

Poirier Elementary

6-11 K- Gr 5	M-F	321	Teachers, Support Staff, Admin	Ministry of Education through School District #62	School goal to use common language around literacy Using “Reading Power” Students, teachers, parents use common words: connect, questioning, visualizing, transforming, inference Monthly workshops with parents regarding these words Tied in with assessment for learning Baseline testing, mid-year, end year to evaluate program Reading buddies	Have common language around literacy develop Narrow gender gap in learning	Y	N	N	Y
-----------------	-----	-----	--------------------------------------	---	--	---	---	---	---	---

Program Details: Elementary Education program Kindergarten to Grade 5

Partnerships: Links with School District programs, community programs, and other school-based programs.

Sooke School District- Aboriginal Education

Target Clientel	When?	“served (yearly)	staff	Funding	Successes	Future Goals	Bu s	\$	Re f	CC A
-----------------	-------	------------------	-------	---------	-----------	--------------	------	----	------	------



e										
Aboriginal Population Gr. K-12	Daily		Teachers and Support Staff	SD62- Aboriginal Education	Increase in grade to grade transition and graduation rates.	Continue to improve success for Aboriginal students.	Y	N	N	Y
Program Details: Literacy Support Teachers and Aboriginal Education Support Workers in all schools										
Partnerships: Works within existing schools and regular programs.										

Sooke School District #62- K-5 Literacy Curriculum Advisor										
Target Clientele	When?	“served (yearly)	staff	Funding	Successes	Future Goals	Bu s	\$	Re f	CC A
K-5	daily	100-200 teachers / admin	Full time Literacy Curric. Advisor	District Funding	Expanded use of service, measure by various assessments ie. DART, FSA, Prov. Exam results	More funding to expand school-based support	Y	N	N	Y
Program Details: : provides workshops, literacy network meeting (4x a year), demos lessons and coaching at schools, inquiry team action research										
Partnerships: networks with other district on the island, participate in prov. DART network										

Sooke School District- Journey Middle School										
Target Clientele	When?	“served (yearly)	staff	Funding	Successes	Future Goals	Bu s	\$	Re f	CC A
12-15	M-F	481	29 Teachers, 19 support staff, 1 principal, 1 vp	Ministry of Education	Our action research project was extremely successful!	lit. and technology... assessment of literacy, pinpointing areas of weakness so that we can apply targeted	Y	N	N	Y

						intervention. Based on the action research of one of our people last year (Martha Gerow)				
<p>Program Details: We currently have a .5 teacher supporting literacy in the school. On top of that, we have a .1 teacher specifically looking at assessment of literacy as well as the integration of technology to support literacy (SMART boards... something new and exciting for us!) Her role is to work directly with teachers. Future goals include looking at the impact of new technologies on literacy.</p> <p>We also have a group of teachers (6) working on action research. This group works on individual projects around literacy, but comes together once every 2 months to discuss their current situation and get feedback from the group.</p> <p>Homework club offered 2x a week</p>										
Partnerships:										

Sooke School District #62- Middle School Curriculum Support Teacher										
Target Clientele	When?	"served (yearly)	staff	Funding	Successes	Future Goals	Bu s	\$	Re f	CC A
Grade 6-8	daily	100-200 teachers / admin	One .125FTE curriculum support teacher @Journey Middle School	Literacy Innovation Grant	Expanded use of service, measure by various assessments ie. DART, FSA, Prov. Exam results	More funding to expand school-based support	Y	N	N	Y
Program Details: : demos lessons and coaching at home and schools, distribution of new ideas and best practice										
Partnerships: networks with other district on the island, participate in prov. DART network										

Sooke Regional Museum										
Target Clientele	When?	"served (yearly)	staff	Funding	Successes	Future Goals	Bu s	\$	Re f	CC A
Gen. pop	Daily	35,000 to	Staff and volunteers	Largely volunteer,	-great number of people using the	Continue to serve area to the whole area in	Y	*	N	N

		40,000		corporate support, small	museum and accessing resources	the best way possible and promote cultural knowledge and understanding of heritage				
--	--	--------	--	--------------------------	--------------------------------	--	--	--	--	--

Program Details: twice a year (Nov/ Dec May/ June) programs are offered to local schools (used by preschool K-elementary, sometimes high school for special projects), American schools also visit, extensive resource library, archives, Sooke News Mirror from beginning to present, research material, participate in various events such as Sooke Fall Fair, interactive with many organization, Spirit of BC (Literacy competition for students), produced several books, host exhibits
*entrance by donation

Partnerships: many community agencies and organizations

TSouke First Nations- youth centre

Target Clientele	When?	"served (yearly)	staff	Funding	Successes	Future Goals	Bu s	\$	Re f	CC A
Any age	Approx 20hrs week	5-10	Youth worker	FNESC- First Nations Education Steering Committee and INAC through Nat. Child Benefit	New computers in lab/ cultural programs/ community support	More hours, more funding	Y	N	N	Y

Program Details: Youth worker plans programs geared to after school activities/ tutoring/ fieldtrips/ fundraising, etc..

Partnerships: none

Tutoring Services

Loftier Learning Literacy

Target Clientele	When?	"served (yearly)	staff	Funding	Successes	Future Goals	Bu s	\$	Re f	CC A



Gen pop	weekdays , evenings and Sundays, if needed	6 students	4 staff	SDA Church	17 years of 2-4 grades in all students per 21-lesson delivery (dyslexia included)	Rehab reading- word attack and comprehension ESL	Y	Y*	Y**	Y
---------	--	------------	---------	------------	---	---	---	----	-----	---

Program Details: pre-employment upgrade, elementary, junior and senior high decoding, ESL *sponsorships available, ** referrals from schools

Jowett Tutoring

--	--	--	--	--	--	--	--	--	--	--

Program Details:

Victoria Home Learning Network- East Sooke to Port Renfrew families

Target Clientele	When?	“served (yearly)	staff	Funding	Successes	Future Goals	Bu s	\$	Re f	CC A
Grades K-12	Daily	35-50 families , approx 120 children	No staff Online hotline for home learners				Y	N	N	Y

Program Details: home learning support program, families can access online home learning hotline and post info/ events etc. , unstructured program, up to each family to create own programs and activities in accordance with BC curriculum

Partnerships: local library is a huge resource for these learners

Vancouver Island Regional Library- Sooke Branch-Summer Reading Club

Target Clientele	When?	“served (yearly)	staff	Funding	Successes	Future Goals	Bu s	\$	Re f	CC A
3-12	weekly	75	VIRL employees	Local taxes, some prov. funding	Use of the library	Offer more adult and children’s programs	Y	N	N	Y

Program Details: Public Library open to the public 6 days a week, offers various children’s programming including a Summer Reading Club

Partnerships: Public Library Services Branch of the Prov. Govt.

Youth for Christ Refuge Bus										
Target Clientele	When?	“served (yearly)	staff	Funding	Successes	Future Goals	Bu s	\$	Re f	CC A
11-18 years	weekly		Trained youth and adults from area churches	Youth for Christ Victoria			Y	N	N	N
<p>Program Details: Kids come to our weekly community drop -in to play video games, listen to music, and get a bite to eat, hang out with staff and other kids and participate in our group discussion. We encourage youth to access needed services in their communities.</p> <p>Refuge is open in Sooke on Wednesday 7-9:00 PM next to A&W in Evergreen Mall.</p> <p>Partnerships: churches, businesses, individuals and community groups</p>										

OFFSITE SERVICES/PROGRAMS

Military Family and Resource Centre (Colwood And Esquimalt)- youth programs/ services										
Target Clientele	When?	“served (yearly)	staff	Funding	Successes	Future Goals	Bu s	\$	Re f	CC A
Military population	Daily/ weekly month yearly	500 families	Instructors, counselors,	Federal gov’t			Y	N	N	Y
<p>Program Details: youth leadership, Teen council, Homework assistance, various recreation programs, Short term intervention and crisis support, counseling</p> <p>Partnerships: Federal Government</p>										

READ Society: Children and Youth Learning Support Programs										
Target Clientele	When?	“served (yearly)	staff	Funding	Successes	Future Goals	Bu s	\$	Re f	CC A



Children and Youth	Daily	Given the hours we have access to facilities, we could current serve up to 40 children/youth per week	professional teachers; number of teachers depends on number of students	fee-payer; Education Access program for low-income households; MCF; Band Councils	<p>Greatest successes: students moving from performing, on the average three grade levels below expected levels, to being at grade level and being interested in learning.</p> <p>Measurement: formal/informal academic assessments conducted at intake; learning goals set at the beginning of each session; successes are measured both formally and informally depending on the length of time a learner is in the program</p>	We would like to be running at maximum capacity over the next year. If that is successful we would like to expand our service to this geographic region.	Y	N	N*	Y
--------------------	-------	---	---	---	---	--	---	---	----	---

Program Details: Children and Youth learning support programs

* No. We have students who come with referrals but these are not required and these students do not form the majority of our population. Students who are referred come through the Ministry for Children and Families; Learning Assistance teachers; school counselors and educational psychologists.

Partnerships: We partner with social support agencies; family service agencies, Band Councils and traditional educational institutions. We also partner with government ministries at the funding level. Our Education Access program raises funds for children and youth from low-income households to attend this individualized support program. There are multiple service clubs, businesses and individuals who support this part our work

Secondary/ Young Adults (16-19)

Rotary Club of Sooke

Target Clientele	When?	“served (yearly)	staff	Funding	Successes	Future Goals	Bu s	\$	Re f	CC A
youth	school year	all schools in School District 62	Fleur Harvey-Kelly: Chair of the Sooke Rotary Literacy Committee Karen Mason: Member of the Sooke Rotary Literacy Committee Contact Information: Fleur Harvey-Kelly, Cell: 250-858-5012 E-mail: fleur@wesltd.net	approx \$2000 per year for our books in the school program from the Sooke Rotary Club of Sooke. plus provide approximately \$6000 in scholarships and one \$500 bursary to graduating students from EMCS.	Provide money to all Schools in District 62 to purchase books. We donate a book and dedicate it to one of our Speakers. Number of books donated to date is approximately 250. Sponsored initial Sooke Literacy Now Forum. International sponsor of girls school in Malawi.	Identify needs of the community and set initiatives accordingly.		*		

Program Details: as detailed above *\$2000 per year

Partnerships: To Be Announced

SEAPARC Leisure Complex-young adult programs and services										
Target Clientele	When?	“served (yearly)	staff	Funding	Successes	Future Goals	Bu s	\$	Re f	CC A
Young adults	Daily weekly month yearly	District of Sooke and	Instructors, contractors and volunteers	Supported through taxes and program/service fee	Participation numbers in our recreation classes	Continue to serve the community	Y	Y	N	N

		JDF elec. area								
Program Details: www.crd.bc.ca/seaparc/program										
Partnerships: various community partnerships depending on program/ service offered										

Sooke Regional Museum										
Target Clientele	When?	"served (yearly)	staff	Funding	Successes	Future Goals	Bu s	\$	Re f	CC A
Gen. pop	Daily	35,000 to 40,000	Staff and volunteers	Largely volunteer, corporate support, small	-great number of people using the museum and accessing resources	Continue to serve area to the whole area in the best way possible and promote cultural knowledge and understanding of heritage	Y	*	N	N
<p>Program Details: twice a year (Nov/ Dec May/ June) programs are offered to local schools (used by preschool K-elementary, sometimes high school for special projects), American schools also visit, extensive resource library, archives, Sooke News Mirror from beginning to present, research material, participate in various events such as Sooke Fall Fair, interactive with many organization, Spirit of BC (Literacy competition for students), produced several books, host exhibits</p> <p>*entrance by donation</p>										
Partnerships: many community agencies and organizations										

Sooke School District- ED West										
Target Clientele	When?	"served (yearly)	staff	Funding	Successes	Future Goals	Bu s	\$	Re f	CC A
Grades 9-11	Daily	26	1 ft, 1 pt teacher	School district funding	Many students receiving course credits (20+ in 11 months), some students back in	Continue, find funding	Y	N	N	Y

Aboriginal Population Gr. K-12	Daily		Teachers and Support Staff	SD62-Aboriginal Education	Increase in grade to grade transition and graduation rates.	Continue to improve success for Aboriginal students.	Y	N	N	Y
Program Details: Literacy Support Teachers and Aboriginal Education Support Workers in all schools										
Partnerships: Works within existing schools and regular programs.										

Sooke Scribblers										
Target Clientele	When?	“served (yearly)	staff	Funding	Successes	Future Goals	Bu s	\$	Re f	CC A
Gen. pop	Monthly	10-12	na	na	Published anthologies, contests for high school students	Have a literary show in Sooke	na	N	N	N
Program Details: Group started 8 years ago by writer doing her own craft in a vacuum, needed other ears and eyes and group formed when discovered there were others with the same need. The group has created own book to be published this fall. Sooke Scribblers also offered writing contests to high school students with prizes- very popular!										
Partnerships: Sooke Arts Council										

Tutoring Services										
Loftier Learning Literacy										
Target Clientele	When?	“served (yearly)	staff	Funding	Successes	Future Goals	Bu s	\$	Re f	CC A
Gen pop	weekdays , evenings and Sundays, if needed	6 students	4 staff	SDA Church	17 years of 2-4 grades in all students per 21-lesson delivery (dyslexia included)	Rehab reading- word attack and comprehension ESL	Y	Y *	Y **	Y
Program Details: pre-employment upgrade, elementary, junior and senior high decoding, ESL *sponsorships available, ** referrals from schools										
Partnerships:										

Vancouver Island Regional Library- Sooke Branch										
Target Clientele	When?	"served (yearly)	staff	Funding	Successes	Future Goals	Bu s	\$	Re f	CC A
General population	6 days a week	5000+	VIRL employees	Local taxes, some prov. funding	Use of the library	Offer more adult and children's programs	Y	N	N	Y
Program Details: Public Library open to the public 6 days a week, once every three months or so a guest speaker or local author may present										
Partnerships: Public Library Services Branch of the Prov Govt										

Worklink										
Target Clientele	When?	"served (yearly)	staff	Funding	Successes	Future Goals	Bu s	\$	Re f	CC A
Serve all Canadians, determine eligibility for other funded programs and services	Daily	3,000 using centre 250 cases managed	1 ft Manager /Coordinator, 1 ft & 2 pt case managers (including outreach) 1 facilitator/job coach, 2 Resource/ Reception staff, 3pt itinerant	Major funder Service Canada, prov funding from Ministry of HSD, sub contracts, Gaming funding	Assisting people to gain employment, helping them to overcome barriers to employment and become self-sufficient Success measurement= 70+% of cases working	More funding, having more qualitative measurements of success	Y	N	EI	Y
Program Details: serve those unemployed: provide needs determination assessment, help those to utilize in house services, assist in making application for Service Canada interventions(wage subsidies, skill enhancement), help with employer applications, create return-to-work action plans Youth Centre open- Monday to Wednesday 4-6pm										
Partnerships: numerous partnerships locally and provincially										

Youth for Christ Refuge Bus

Target Clientele	When?	“served (yearly)	staff	Funding	Successes	Future Goals	Bu s	\$	Re f	CC A
11-18 years	weekly		Trained youth and adults from area churches	Youth for Christ Victoria			Y	N	N	N
Program Details: Kids come to our weekly community drop -in to play video games, listen to music, get a bite to eat, hang out with staff and other kids and participate in our group discussion. We encourage youth to access needed services in their communities. Refuge is open in Sooke on Wednesday 7-9:00 PM next to A&W in Evergreen Mall.										
Partnerships: churches, businesses, individuals and community groups										

OFFSITE SERVICES/ PROGRAMS

Military Family and Resource Centre (Colwood And Esquimalt)- youth programs/ services										
Target Clientele	When?	“served (yearly)	staff	Funding	Successes	Future Goals	Bu s	\$	Re f	CC A
Military population	Daily/ weekly month yearly	500 families	Instructors, counselors,	Federal gov't			Y	N	N	Y
Program Details: youth leadership, Teen council, Homework assistance, various recreation programs, Short term intervention and crisis support, counseling										
Partnerships: Federal Government										

READ Society- Adult Basic Skills; Computer Literacy; ESL (Westshore location)										
Target Clientele	When?	“served (yearly)	staff	Funding	Successes	Future Goals	Bu s	\$	Re f	CC A
Young Adult/ Adult	Daily	Average of 62 clients	professional teachers; number of teachers	federal/ provincial funding; fee-payer	Greatest successes: learners who achieve their goals and are able to move forward with	We would like to find a partner in Sooke and/or Langford Colwood who could	Y	*	*	Y

			depends on number of students		their lives Measurement: formal/informal academic assessments conducted at intake; students and teachers set learning and personal goals at the beginning of each session; successes are measured both formally and informally depending on the length of time a learner is in the program	provide space for us to offer this program in the immediate community. Many of our students come from the Sooke/West Shore geographic area and a presence in the immediate community would help reduce a barrier to learning.				
--	--	--	-------------------------------	--	---	---	--	--	--	--

Program Details: Adult Basic Skills; Computer Literacy; ESL (Westshore location)
 * Our program accepts both referred and non-referred individuals. Those who come without referrals are fee-payers. Students who are referred come through Service Canada referring bodies, BC Employment referring bodies and various employment service agencies

Partnerships: We partner with employment referring agencies; social support agencies; traditional educational institutions and other agencies that could support the learners in the program. We also partner with government ministries at the funding level and in some cases with private organizations prepared to support adult learners.

Westshore Training and Learning Centre- Westshore location										
Target Clientele	When?	"served (yearly)	staff	Funding	Successes	Future Goals	Bu s	\$	Re f	CC A
Adult	M-F		Teachers, support staff admin	Ministry of Ed			Y	Y/ N	N	Y

Program Details "WestShore Centre for Learning and Training, in operation for 20 years, provides more options and choices for your learning and training needs. Complete high school graduation, prepare for college, or train for a



job. WestShore Centre programs help you take that first step to a new career. With flexible teacher-led classes offered morning, afternoon, evening, or online, you can choose an option that works for your busy schedule.” : www.learnforlife.ca

Offers grad programs, First Nations grad program, computer programming, Reading Resource Library, Juan De Fuca Distributed Learning courses 8-12, paper based and online learning

Partnerships:

Adult (20-64)

P.A.R.T.N.E.R.S.- Parents Are Ready to Teach and Nurture Effective Reading Skills

Target Clientele	When?	“served (yearly)	staff	Funding	Successes	Future Goals	Bu s	\$	Re f	CC A
Parent, children 6-11	Daily	50	Teachers	Grants, school funds, conations	Kids become readers!		Y	N	N	N

Program Details: P.A.R.T.N.E.R.S. stands for Parents Are Ready to Teach and Nurture Effective Reading Skills. I created the program to be able to reach more students who were struggling to read than I was able to do on my own. We know that children who are struggling are much more successful when they can have intensive one-on-one support. I was unable to provide that type of service when I was a learning assistance teacher as there were too many kids to fit into my daily schedule. I began training parents so that the parents could do the one-on-one daily work and I could do the weekly conferencing with the students, assessing their reading level and support the parents. The more I worked with this philosophy and the more parents I engaged, the more success I was seeing. I have been using the program for three years now.

Partnerships: None

Reading Room Bookstore- Book Club

Target Clientele	When?	“served (yearly)	staff	Funding	Successes	Future Goals	Bu s	\$	Re f	CC A
Adults	monthly	8	na	na			Y	N	N	wifi

Program Details: Reading Room bookstore hosts a monthly book club gathering. As well there are book launches held at the store. The bookstore also offers wifi services to customers.

Partnerships: Sooke Scribblers

SEAPARC Leisure Complex-adult programs and services

Target Clientele	When?	“served (yearly)	staff	Funding	Successes	Future Goals	Bu s	\$	Re f	CC A
adult	Daily weekly month yearly	District of Sooke and JDF elec. area	Instructors, contractors and volunteers	Supported through taxes and program/ service fee	Participation numbers in our recreation classes	Continue to serve the community	Y	Y	N	N

Program Details: www.crd.bc.ca/seaparc/program

Partnerships: various community partnerships depending on program/ service offered

Sooke Family Resource Centre: Parent Groups, Supper Circle, Positive Parenting Program

Target Clientele	When?	“served (yearly)	staff	Funding	Successes	Future Goals	Bu s	\$	Re f	CC A
Family/ Parents	Weekly/ Monthly	100+	SFRS staff	(CAPC) Capital Children’s Coalition Donations Cold Star donates food for suppers, volunteers	Reducing isolation, parent support, resources, networking, modeling, socialization for children	Ongoing funding, standardized programming for Neighbourhood Houses, links with families on reserves	Y	Y/ N	N	Y

Program Details: Parent Discussion Groups, Parent Support Circle, Supper Circle

Partnerships:

Sooke Regional Museum

Target	When?	“served	staff	Funding	Successes	Future Goals	Bu	\$	Re	CC
--------	-------	---------	-------	---------	-----------	--------------	----	----	----	----

Clientele		(yearly)					s		f	A
Gen. pop	Daily	35,000 to 40,000	Staff and volunteers	Largely volunteer, corporate support, small	-great number of people using the museum and accessing resources	Continue to serve area to the whole area in the best way possible and promote cultural knowledge and understanding of heritage	Y	*	N	N
<p>Program Details: twice a year (Nov/ Dec May/ June) programs are offered to local schools (used by preschool K-elementary, sometimes high school for special projects), American schools also visit, extensive resource library, archives, Sooke News Mirror from beginning to present, research material, participate in various events such as Sooke Fall Fair, interactive with many organization, Spirit of BC (Literacy competition for students), produced several books, host exhibits</p> <p>*entrance by donation</p>										
<p>Partnerships: many community agencies and organizations</p>										

Sooke Scribblers										
Target Clientele	When?	“served (yearly)	staff	Funding	Successes	Future Goals	Bu s	\$	Re f	CC A
Gen. pop	Monthly	10-12	na	na	Published anthologies, contests for high school students	Have a literary show in Sooke	na	N	N	N
<p>Program Details: Group started 8 years ago by writer doing her own craft in a vacuum, needed other ears and eyes and group formed when discovered there were others with the same need. The group has created own book to be published this fall. Sooke Scribblers also offered writing contests to high school students with prizes- very popular!</p>										
<p>Partnerships: Sooke Arts Council</p>										

Sooke School District- Edward Milne Community School										
Target Clientele	When?	“served (yearly)	staff	Funding	Successes	Future Goals	Bu s	\$	Re f	CC A

e										
Adult and Senior	Daily, weekly, monthly, yearly	Of the above mentioned courses, approx. 75	Hired instructors	Cost recovery through course fees	Courses that have sufficient enrolment to run. In terms of content, feedback from participants.	More programs for Seniors and Youth	Y	Y	N	N
Program Details: Computer Skills courses: Word, Excel, PowerPoint, File Management, Computers for Older Beginners, Introduction to University Writing, Spanish Level 1 & 2										
Partnerships: Not the above programs										

Tutoring Services										
Loftier Learning Literacy										
Target Clientele	When?	"served (yearly)	staff	Funding	Successes	Future Goals	Bu s	\$	Re f	CC A
Gen pop	weekdays, evenings and Sundays, if needed	6 students	4 staff	SDA Church	17 years of 2-4 grades in all students per 21-lesson delivery (dyslexia included)	Rehab reading- word attack and comprehension ESL	Y	Y*	Y**	Y
Program Details: pre-employment upgrade, elementary, junior and senior high decoding, ESL *sponsorships available, ** referrals from schools										
Partnerships:										

Vancouver Island Regional Library- Sooke Branch										
Target Clientele	When?	"served (yearly)	staff	Funding	Successes	Future Goals	Bu s	\$	Re f	CC A
General population	6 days a week	5000+	VIRL employees	Local taxes, some prov. funding	Use of the library	Offer more adult and children's programs	Y	N	N	Y
Program Details: Public Library open to the public 6 days a week, once every three months or so a guest speaker or local										

author may present
Partnerships: Public Library Services Branch of the Prov Govt

Worklink										
Target Clientele	When?	“served (yearly)	staff	Funding	Successes	Future Goals	Bu s	\$	Re f	CC A
Serve all Canadian s, determine eligibility for other funded programs and services	Daily	3,000 using centre 250 cases managed	1 ft Manager /Coordinator, 1 ft & 2 pt case managers (including outreach) 1 facilitator/job coach, 2 Resource/ Reception staff, 3pt itinerant	Major funder Service Canada, prov funding from Ministry of HSD, sub contracts, Gaming funding	Assisting people to gain employment, helping them to overcome barriers to employment and become self-sufficient Success measurement= 70+% of cases working	More funding, having more qualitative measurements of success	Y	N	EI	Y
<p>Program Details: serve those unemployed: provide needs determination assessment, help those to utilize in house services, assist in making application for Service Canada interventions(wage subsidies, skill enhancement), help with employer applications, create return-to-work action plans Youth Centre open- Monday to Wednesday 4-6pm</p> <p>Partnerships: many partnerships local, provincial and federal</p>										

OFF SITE SERVICES/PROGRAMS

Camosun College- Victoria/ Interurban location										
Target Clientele	When?	“served (yearly)	staff	Funding	Successes	Future Goals	Bu s	\$	Re f	CC A
Adult and Seniors	Daily, weekly, monthly, yearly	2006/2007 – 786 students	Faculty, support staff, Managers	Ministry of Advanced Education	Student course and program completion, students to the workforce with		Y	Y*	N	Y

		from Sooke			enhanced abilities and skills					
Program Details: Mission “The School of Access offers adult learners quality educational programs and services that provide the skills for further studies and for enhanced participation in the economic and social life of their communities” *Upgrading is Tuition Free										
Partnerships: high school and community agencies involved in adult literacy, integration and language dev. of newcomers to Canada, adult clients with developmental delay or brain trauma										

Literacy Victoria- Victoria location										
Target Clientele	When?	“served (yearly)	staff	Funding	Successes	Future Goals	Bu s	\$	Re f	CC A
Adult - senior *see program details	Daily	unsure how many from Sooke area	3 ft and 1 pt	Combo of Federal, Provincial and local funding	Helping others, measured by both formal and informal feedback from our learners	Looking to also offer services to young adults	Y	N	N	Y
Program Details: Learners’ Network (one to one tutoring), Learning Webs (on-line learning, Outreach- planning on extending outreach tutoring program to Sooke and Pt. Renfrew, First Nations tutor program (TSouke, Beecher Bay and Pacheedaht) *program aims to serve adults and seniors including First Nations, Women, Special Needs and marginalized people such as those homeless, experiencing poverty, drug addictions etc.										
Partnerships: many partnerships										

Military Family and Resource Centre (Colwood and Esquimalt)- adult programs/services										
Target Clientele	When?	“served (yearly)	staff	Funding	Successes	Future Goals	Bu s	\$	Re f	CC A
Military population	Daily/ weekly month yearly	500 families	Instructors, counselors,	Federal gov’t			Y	N	N	Y

Program Details: Homefront Bistro- every 2nd Thursday of each month meeting in Sooke at CASA, also if demand exists will offer workshops in Sooke, Employment and Educational Assistance program, parent education and support committee, Navigator program, women's circle, parent network, support workshops, language programs, recreational programs

Partnerships: Federal Government

READ Society- Adult Basic Skills; Computer Literacy; ESL (Westshore location)

Target Clientele	When?	"served (yearly)	staff	Funding	Successes	Future Goals	Bu s	\$	Re f	CC A
Young Adult/ Adult	Daily	Average of 62 clients	professional teachers; number of teachers depends on number of students	federal/ provincial funding; fee-payer	<p>Greatest successes: learners who achieve their goals and are able to move forward with their lives</p> <p>Measurement: formal/informal academic assessments conducted at intake; students and teachers set learning and personal goals at the beginning of each session; successes are measured both formally and informally depending on the length of time a learner is in the program</p>	We would like to find a partner in Sooke and/or Langford Colwood who could provide space for us to offer this program in the immediate community. Many of our students come from the Sooke/West Shore geographic area and a presence in the immediate community would help reduce a barrier to learning.	Y	*	*	Y

Program Details: Adult Basic Skills; Computer Literacy; ESL (Westshore location)

* Our program accepts both referred and non-referred individuals. Those who come without referrals are fee-payers. Students who

are referred come through Service Canada referring bodies, BC Employment referring bodies and various employment service agencies

Partnerships: We partner with employment referring agencies; social support agencies; traditional educational institutions and other agencies that could support the learners in the program. We also partner with government ministries at the funding level and in some cases with private organizations prepared to support adult learners.

Westshore Training and Learning Centre- Westshore location

Target Clientele	When?	“served (yearly)	staff	Funding	Successes	Future Goals	Bu s	\$	Re f	CC A
Adult	M-F		Teachers, support staff admin	Ministry of Ed			Y	Y/ N	N	Y

Program Details “WestShore Centre for Learning and Training, in operation for 20 years, provides more options and choices for your learning and training needs. Complete high school graduation, prepare for college, or train for a job. WestShore Centre programs help you take that first step to a new career. With flexible teacher-led classes offered morning, afternoon, evening, or online, you can choose an option that works for your busy schedule.” : www.learnforlife.ca

Offers grad programs, First Nations grad program, computer programming, Reading Resource Library, Juan De Fuca Distributed Learning courses 8-12, paper based and online learning

Partnerships:

Seniors (65+)

Sooke Elderly Citizen’s Society- Ayre Manor

Program Details: “Ayre Manor Lodge, located at 6744 Ayre Road in Sooke, will combine 25 assisted living apartments and 32 residential care beds into a campus of care within the same development for a total of 57 new beds and units. Construction is expected to begin this month with anticipated completion in June 2008. Ten of the 25 assisted living suites will be funded through the Independent Living BC (ILBC) program. The assisted living units are all one-bedroom units. Eligible residents pay 70 per cent of their after-tax income for their units and services, which include weekly housekeeping and linen services, 24-hour response, personal care

services, and social and recreational opportunities. Thirty of the 32 residential care beds will be funded through VIHA. The beds are built to current complex care guidelines, meaning they are single occupancy rooms with a private washroom facility. Beckley Farm Lodge will operate and provide the care services upon opening. The beds are supported by 24/7 registered nurse care as well as other health support services aimed at providing the high level of health-care services that are required by individuals with complex care needs. The three-storey building will have two hospice units, dining rooms, meeting rooms and courtyards. There are 18 pre-existing independent living cottages, which will bring the total number of care beds in the campus of care to 75. Four levels of care will be offered on-site, including independent, assisted, hospice and complex.”www2.news.gove.bc.ca

Partnerships: Prov. Govt., District of Sooke, VIHA, CRD, Sd 62, Sooke Elderly Citizens Society

Red Hat Sooke Sirens

Target Clientele	When?	“served (yearly)	staff	Funding	Successes	Future Goals	Bu s	\$	Re f	CC A
Women 50+	weekly									

Program Details: the group meets for fun events, lunch, dinners and shopping sprees , as well as various fundraising endeavors

Partnerships:

Sooke New Horizons

Target Clientele	When?	“served (yearly)	staff	Funding	Successes	Future Goals	Bu s	\$	Re f	CC A
65+	weekly									

Program Details: meets on Tuesdays for Bridge

Partnerships:

Sooke Regional Museum

Target Clientele	When?	“served (yearly)	staff	Funding	Successes	Future Goals	Bu s	\$	Re f	CC A
Gen. pop	Daily	35,000 to 40,000	Staff and volunteers	Largely volunteer, corporate	-great number of people using the museum and	Continue to serve area to the whole area in the best way possible	Y	*	N	N

				support, small	accessing resources	and promote cultural knowledge and understanding of heritage				
--	--	--	--	-------------------	---------------------	---	--	--	--	--

Program Details: twice a year (Nov/ Dec May/ June) programs are offered to local schools (used by preschool K-elementary, sometimes high school for special projects), American schools also visit, extensive resource library, archives, Sooke News Mirror from beginning to present, research material, participate in various events such as Sooke Fall Fair, interactive with many organization, Spirit of BC (Literacy competition for students), produced several books, host exhibits
*entrance by donation

Partnerships: many community agencies and organizations

Sooke Seniors Drop In Centre

Target Clientele	When?	"served (yearly)	staff	Funding	Successes	Future Goals	Bu s	\$	Re f	CC A
65+	Daily M- f 10-4	230	volunteers	Charity- raise money through lunches, bingo, donations from local groups ie. Red Hats	Providing a place where people can come and visit and talk, bring their problems, connect with others	New and bigger facility coming soon with billiard table, bring more men in, also more compilers	Y	Y *	N	Y

Program Details: centre provides company and inexpensive meals to seniors in the community, run Bingo, card groups, 2 hot lunches a month, followed by various guest speakers, offer various book resources and services to help with forms ie. taxes

Partnerships: Red Hats, CAPS organization to help with computer upgrades

Vancouver Island Regional Library- Sooke Branch

Target Clientele	When?	"served (yearly)	staff	Funding	Successes	Future Goals	Bu s	\$	Re f	CC A
General populati	6 days a week	5000+	VIRL employees	Local taxes, some prov.	Use of the library	Offer more adult and children's programs	Y	N	N	Y

on				funding					
Program Details: Public Library open to the public 6 days a week, once every three months or so a guest speaker or local author may present									
Partnerships: Public Library Services Branch of the Prov Govt									

OFFSITE SERVICES/ PROGRAMS

Literacy Victoria- Victoria location										
Target Clientele	When?	“served (yearly)	staff	Funding	Successes	Future Goals	Bu s	\$	Re f	CC A
Adult - senior *see program details	Daily	unsure how many from Sooke area	3 ft and 1 pt	Combo of Federal, Provincial and local funding	Helping others, measured by both formal and informal feedback from our learners	Looking to also offer services to young adults	Y	N	N	Y
<p>Program Details: Learners' Network (one to one tutoring), Learning Webs (on-line learning, Outreach- planning on extending outreach tutoring program to Sooke and Pt. Renfrew, First Nations tutor program (TSouke, Beecher Bay and Pacheedaht) *program aims to serve adults and seniors including First Nations, Women, Special Needs and marginalized people such as those homeless, experiencing poverty, drug addictions etc.</p>										
Partnerships: many partnerships										

Westshore Training and Learning Centre- Westshore location										
Target Clientele	When?	“served (yearly)	staff	Funding	Successes	Future Goals	Bu s	\$	Re f	CC A
Adult	M-F		Teachers, support staff admin	Ministry of Ed			Y	Y/N	N	Y
<p>Program Details “WestShore Centre for Learning and Training, in operation for 20 years, provides more options and choices for your learning and training needs. Complete high school graduation, prepare for college, or train for a</p>										

job. WestShore Centre programs help you take that first step to a new career. With flexible teacher-led classes offered morning, afternoon, evening, or online, you can choose an option that works for your busy schedule.” : www.learnforlife.ca. Offers grad programs, First Nations grad program, computer programming, Reading Resource Library, Juan De Fuca Distributed Learning courses 8-12, paper based and online learning

Partnerships:

Other Related Community Organizations:

Name	Target Clientele	Program Details	Other
Bookstores: Reading Room Bookstore Well Read Books	General Population	Bookstores offering children to adults books. The Reading Room Bookstore has a book club and hosts various book launches. There is also wireless internet offered to customers.	
BC Literacy Initiatives: -Regional Literacy Advisory Group -Literacy BC - Legacies 2010	General Population	RLAG meets regarding literacy initiatives, needs, issues and has a regional coordinator Literacy BC will sent out books/ recourses at no cost to communities, speakers are available, number of resources on website 2010 Legacies Now- numerous literacy resources	
CHI and Navigators Steering Committee	General Population	Community Health Initiative:	
Community Associations -Sooke - Shirley	General Population	Sooke Community Association: owns community hall and ball/ soccer fields, many groups operate out of hall such as seniors groups, meals on wheels, food bank, classes are also offered and include, karate and boxing, music classes for disabled peoples	
Legion Branch 54		The Legion Branch 54 supports many community events, youth sports, seniors housing, and student scholarships. Remembrance Day essay contest	
Lions/ Lioness Club		“With the Lions Clubs, we support the major service commitments and activities of Lionism, particularly sight	

		conservation and work with the blind and hearing conservation and work with the deaf - the Dog Guides of Canada Programs (Canine Vision, Hearing Ear Dogs, Special Skills Dogs) of the Lions Foundation of Canada. Within the SOOKE COMMUNITY and SURROUNDING AREA, we support a variety of organizations such as the Food Bank, Port Renfrew Elementary School, Royal Canadian Legion #54, Shirley Community Association, and Sooke CASA, Christmas Bureau, Fall Fair, Family Resource Society, Health Clinic, Hospice, Options for Community Living, Residents in Need, and Transition House Society.” www.sookedistrictlioness.org	
Salvation Army-Thrift Store	General Population	All proceeds from thrift store go towards helping the needy and the disadvantaged in the area	
Sooke Arts Council	General Population	Local Arts Council working to advance the role of arts and culture in the community and community development	
Sooke Community Choir	Adult and Youth	Community Choir of 40 members, performs 2 concerts annually and sings at numerous local events,	Partners with elementary school choirs
Sooke Community Food Bank Society	Those in need of service	Provides food hampers to those in need	
Sooke Fall Fair	General Population	The Sooke Fall Fair is one of the community’s longest running annual events and is a chance for the community to showcase their local talents from various areas of interest.	Runs beginning of September
Sooke Harbour Chamber of Commerce	Business population of Sooke	“The Sooke Harbour Chamber of Commerce is business people in the Sooke region working together for the economic and social well-being of the community. As the voice of business in the area, the Chamber works to create an environment in which business can thrive and co-exist with our natural surroundings. Membership in the Chamber offers business a chance to network with other members and improve the economic viability of our neighbourhood.” www.sookeharbourchamber.com	

Sooke Hospice	Patients with life threatening illnesses and their families	Hospice offers care for those with life threatening illnesses, provides comfort and support to their families, The Hospice team includes a physician and nurse and trained volunteers.	
Sooke Mirror	General Population	Biweekly paper committed to local reporting	
Sooke Options for Community Living	People who live with developmental and physical disabilities, their families and caregivers.	Offers summer camp for approx.15 families, provides day support, provides resources and support for families and caregivers	
Spirit of BC	General Population	For BC's 150 anniversary: "Supported by 2010 Legacies Now and the Province of BC, Spirit of BC is a province-wide initiative that promotes community innovation, pride and excellence, and involves British Columbians in the opportunities arising from the 2010 Olympic and Paralympics Winter Games." www.spiritofbc.caom Poetry contest- Sooke Then Now and Forever, sponsorship for cash prizes and certificates, all entries at the museum	
Stage West Players	General Population	Mission: To provide quality theatre performances for local and visiting audiences. Also, to welcome new members! Auditions are always open to the public	Performs shows annually at the Sooke Community Theatre
Transition House Annie's Place	Any woman who has been abused or at risk of being abused is eligible to receive our services at no cost	Services available:, 24 hour pager access.,Crisis intervention and support. , Shelter and food. Access to emergency clothing. Provide information about violence and abuse in relationships. Supportive counseling – specific to abuse issues, with the goal of creating an environment that enables women to become empowered to take charge of their own lives. Advocacy and referral services. Transportation arrangements. Accompaniment to appointments (police, MCFD, MHR, lawyer, etc.). Community education. www.anniesplacetransitionhouse.ca	Programs offered: Women's support groups, individual counseling, public education, volunteering

APPENDIX B
PORT RENFREW LITERACY ASSETS INVENTORY

Port Renfrew Inventory Summary

Birth to Age 5

Baby Days
Target Clientele: 0-3
Program Details: Program offered every Wednesday, Vancouver Island Health Authority nurses visit to teach parenting skills to parents, sometimes hearing and vision checks as well
Kindergym
Target Clientele: 0-5
Program Details: Playtime for under five year olds, happens once a week, no cost for families, funded by Pacheedaht First Nations
Pachedaht First Nations- Preschool
Target Clientele: 3-4 years
Program Details: Preschool program offered Monday through Thursday 10am to 2pm
Port Renfrew Health and Social Services Society
Target Clientele: General Population
Program Details: Provides safe environment for the Port Renfrew population. Offers various programs and services, including free games and recreation area, as well as a community free store for various home and clothing items
Vancouver Island Regional Library
Target Clientele: General Population
Program Details: The library is open Tues and Thurs. afternoon and evenings and offers free wireless services.

Elementary (6-11)/ Middle School(12-15)

Port Renfrew Elementary School Afterschool program
Target Clientele: 6-10yrs
Program Details: Afterschool care program runs Monday to Friday from 3-4:30pm, provides activities crafts, etc, as well as field trips to those 7 and older, funded by Port Renfrew Health and Social Services Society
Port Renfrew Health and Social Services Society
Target Clientele: General Population
Program Details: Provides safe environment for the Port Renfrew population. Offers various programs and services, including free games and recreation area, as well as a community free store for various home and clothing items Also, offer 4 computes with internet access.
Sooke School District #62- Port Renfrew Elementary School
Target Clientele: Kindergarten to Grade 5
Program Details: School offers K through Gr. 5 programming, 22 students in 2 classrooms, Speech and Language Pathologist visit once a week, Occupational Therapist and Physio Therapist visit occasionally
Vancouver Island Regional Library
Target Clientele: General Population
Program Details: The library is open Tues and Thurs. afternoon and evenings and offers free wireless services.
Outside of Area services
SEAPARC- Sooke
Target Clientele: middle and secondary school students
Program Details: For two hours afterschool on Tuesdays SEAPARC offers an optional afterschool program to assist with homework, safe place to be afterschool

Sooke School District #62- Journey Middle School
Target Clientele: Grade 6-8
Program Details: Offers Grades 6-8 programming, students from Port Renfrew bus into Sooke, bus leaves approx 7 and returns by 4:45pm

Young Adult (16-19)

Port Renfrew Health and Social Services Society-
Target Clientele: General Population
Program Details: Provides safe environment for the Port Renfrew population. Offers various programs including Peer Helper Group which provides referrals, youth program (7-18yrs) offered 6 days a week, Summer Youth Program- various out trips such as Horne Lake, Parksville, Forest Museum, Lizard Lake The centre has free games and recreation area, as well as a community free store for various books, clothing items, etc. and 4 computers with internet access.

Vancouver Island Regional Library
Target Clientele: General Population
Program Details: The library is open Tues and Thurs. afternoon and evenings and offers free wireless services.

Outside of Area Services

SEAPARC- Sooke
Target Clientele: middle and secondary school students
Program Details: For two hours afterschool on Tuesdays SEAPARC offers an optional afterschool program to assist with homework, safe place to be afterschool

Sooke School District #62- Edward Milne Community School
Target Clientele: Grade 9-12
Program Details: Offers Grades 9 through 12 programming, students from Port Renfrew bus into Sooke, bus leaves approx 7am and returns by 4:45pm



Adults (20+)

Pachedaht First Nations
Target Clientele: Adult
Program Details: Pachedaht First Nations offers many programs and services including: <ul style="list-style-type: none">• Adult Education- In partnership with Sooke School District #62 provides Adult Education program, runs Tues, Wed, Thurs 3hrs a day, 4hrs on Wed, course include math, English, Home Economics, PE, Native Art- carving, paddles, cedar bark stripping• Community Kitchen- cooks lunches everyday• Employment Opportunities assistance• Community Garden• Good Food Box• Childcare services
Port Renfrew Health and Social Services Society
Target Clientele: General Population
Program Details: Provides safe environment for the Port Renfrew population. Offers various programs and services, including free games and recreation area, as well as a community free store for various home and clothing items Also have 4 computers all with an Internet connection, word processors, image editors and much more. volunteers on staff to help set up email accounts, help surf the net, and learn about computers in general.
Vancouver Island Regional Library
Target Clientele: General Population
Program Details: The library is open Tues and Thurs. afternoon and evenings and offers free wireless services.

APPENDIX C
BUDGET



Literacy Financial Report worksheet with formulas	Column A	Column B	Column C	
EXPENDITURES	Total Cost (Cash and In-Kind)	Amount of Cash	Amount of Column A that is In-Kind	Notes
Salaries and contracts			\$2,000	Administrative time for VP Staff Development, School District No. 62
		\$11,000		Literacy Coordinator, Gillian Petrini
Salaries and Contracts Sub-total:	\$0	\$11,000	\$2,000	
Direct Costs				
Travel				
Childcare				
Program Supplies				
Professional Development				
Other (specify): Food for events/meetings		\$1,569		
Direct Costs Sub-total:	\$0	\$1,569	\$0	
Communications				
Printing/copying		\$339	\$100	
Website design and maintenance				
Marketing, publicity and promotion		\$229		
Telecommunications (phone, internet)				

Other (specify):Postage		\$44		
Communications Sub-total:	\$0	\$612	\$100	
Funds Subcontracted to other organizations				
Subcontracted funds Sub-total:	\$0	\$0	\$0	
Communications Sub-total:	\$0	\$0	\$0	
Overhead				
Office supplies				
Rental of space		\$30	\$350	
Overhead Sub-total:	\$0	\$30	\$350	
TOTAL EACH COLUMN	\$0	\$13,211	\$2,450	
REVENUES	Cash		In-Kind Value	Notes
Contribution from Applicant and Partners				
Applicant and Partner Sub-total:	\$0		\$0	
Local government grants (specify)				
Local Government Sub-total:	\$0		\$0	
Provincial government grants (specify)				

Provincial government Sub-total:	\$0		\$0	
Other Government (Federal etc) (specify)				
GST Rebate		\$60		
Other Government Sub-total:	\$0		\$0	
Foundations (specify)				
Rotary Club		\$300		
Foundations Sub-total:	\$0		\$0	
Fundraising & Donations (specify)				
Fundraising & Donation Sub-total:	\$0		\$0	
Earned Revenue (specify)				
Earned Revenue Sub-total:	\$0		\$0	
Other (specify)				
Other Sub-total:	\$0		\$0	
Revenue from 2010 Legacies Now	\$13,211			
Revenue from 2010 Legacies Now for Literacy Outreach Coordinator	\$13,211			

TOTAL ALL REVENUE SUBTOTALS AND 2010 LEGACIES NOW CONTRIBUTION	\$13,211		\$0	
TOTAL REVENUES (Column A + C)	\$13,211			
SURPLUS/DEFICIT	\$13,211			

If there are 2010 Legacies Now funds remaining, the use of these will be discussed with the Director of Community and Adult Literacy at 2010 Legacies Now as per the contribution agreement.



