

District Literacy Plan

A Community Literacy Plan

July 15, 2009

School District No. 57 (Prince George)



Acknowledgments

The District Literacy Plan is a statement of commitment by a school district to work with community partners to improve literacy for young children, school-aged children, adults and Aboriginal people. District Literacy Plans provide a new way for school districts to support all members of a community, as individuals and organizations work together to promote literacy. Literacy planning is a community-wide process that includes the school district as one of many partners. The most important aspect of building the plan is developing working relationships within the community.

This plan includes a summary of literacy initiatives both within the district and in the general community. We would like to acknowledge all of the efforts of our community partners to promote literacy in our communities and to thank them for their efforts in this area. We hope that we can continue to build strong supportive structures to improve literacy.

We would particularly like to extend a heartfelt thank you to Donna Preston, retired curriculum administrator. Donna agreed to be contracted to consult, collate and write this literacy plan, and we are indebted to her for the quality of her work.

Bonnie Chappell
Director, School Services
School District No. 57 (Prince George)

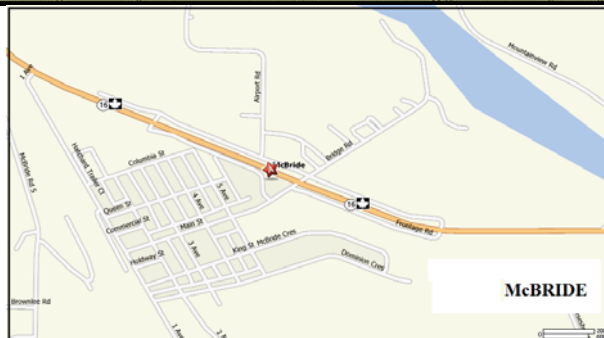
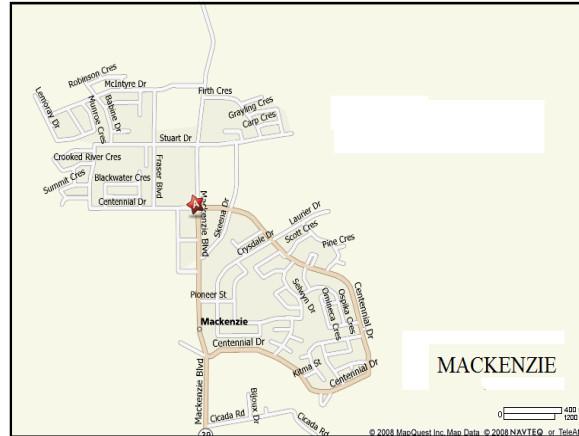
Table of Contents

Community Maps	page 5
Introduction	page 6
Background	page 6
Defining Literacy	page 7
Community Planning Process	page 7
District Context	page 8
Overview	page 9
McBride	page 10
Community Profile	page 10
Community Context	page 10
Stage of Planning	page 10
Planning Process	page 10
References/ Potential Partners	page 11
Mackenzie	page 12
Community Profile	page 12
Community Context	page 12
Stage of Planning	page 13
Planning Process	page 13
References /Potential Partners	page 14
Valemount	page 15
Community Profile	page 15
Community Context	page 15
Stage of Planning	page 15
Partnerships formed so far	page 15
References /Partners	page 16
Prince George	page 18
Community Profile	page 18
Community Context	page 18
Stage of Planning	page 19
Partnerships formed so far	page 19
References	page 25
Future Planning	page 26
Summary	page 27

List of Appendices

- Appendix 1 Valemount Area Community Literacy Plan 2009: Second Plan Yearly Review
- Appendix 2 Literacy Now Prince George Strategic Plan
- Appendix 3 2010 Legacies Now Report Form and Guidelines: Literacy Now Communities Program Stage Three Implementation 2008-2009
- Appendix 4 Literacy Programs Prince George 2009

COMMUNITY MAPS



I

Introduction

This District Literacy Plan (School District No.57) is grounded in the belief that building strong relationships between the community and the school district is a crucial component for life long learning. The purpose of this document is to continue to develop and sustain working relationships within our community. The intent of this document is to be inclusive from early learning through to adult learning. This District Literacy Plan has been collaboratively developed with input from School District No. 57 personnel, Public Libraries, Early Learning Organizations and Community Organizations. In essence, the District Literacy Plan is a statement of commitment by School District No.57 to "identify areas of focus for the improvement of literacy, describe strategic actions, including opportunities for improved access to literacy programs and services, and outline processes to monitor progress and make adjustments in order to improve literacy." (B.C Ministry of Education, DLP Transitional Guidelines 2007-2008, August 2007).

A. Background

"In *Reading the Future*, the Canadian Council on Learning (CCL) projects that there will be little to no progress in our population's level of literacy. In fact, by 2031, 47% of adults aged 16 and over—totaling more than 15 million—will continue to have low literacy skills below IALSS Level 3, or the internationally-accepted Level of literacy required to cope in a modern society."
Canadian Council on Learning
June 2008

When we consider the literacy research findings in Canada and particularly in British Columbia, it is clear we need to improve our literacy results. The world's first internationally comparative survey of adult literacy, which created comparable profiles across national, linguistic and cultural boundaries, is the International Adult Literacy Survey (IALS). In 1994, seven countries took part; namely, Germany, the Netherlands, Poland, Sweden, Switzerland, the United States and Canada. In 2003, the International Adult Literacy and Life Skills Survey (IALSS) built on its predecessor. The IALSS measured Canadian adults' knowledge and skills in four domains: prose literacy, document literacy, numeracy, and problem solving. Proficiencies were rated and reported on the basis of five levels: Levels 1 through 5. Based on results of the IALSS, almost half (42%) of all "working-age" adults (16-65) have low literacy skills. The proportion of low-skilled adults grows to 48% when seniors aged 66 and over are included. These figures have not changed over the last decade.

In British Columbia, 35% of the working-age population (16 to 65) had an average Prose literacy proficiency below level 3². Level 3 is considered the minimum desired level of literacy for Canadians. But most importantly, British Columbia had one million people with low literacy skills and about 40 per cent of them at Level 1 (Dr. Satya Brink, Director of National Learning Policy Research, *and Literacy in British Columbia/Implications of Findings from IALSS 2003*, presented June 2006).

B. Defining Literacy

In the past literacy was measured in terms of reading, writing, and math skills. Today the definition of literacy has expanded to reflect our ever changing world. The International Adult Literacy and Life Skills Survey (IALLS 2005) defines literacy as “the ability to understand and employ printed information in daily activities, at home, at work and in the community- to achieve one’s goals, and to develop one’s knowledge and potential. ” The definition of literacy in the Literacy Now Planning Guide will be used for this District Literacy Plan...

Literacy is an essential cultural, social and academic practice that involves not only reading, writing and numeracy, but also a variety of abilities including viewing and representing, aural literacy including language, musical and listening skills, cultural literacy including civic skills.

Literacies enable us to communicate, represent and evaluate knowledge in multiple ways. The more literacies we learn, the greater our understanding of the world. Literacy is a continuum of skills. We can become more literate. (Source: Literacy Now Planning Guide, p.4, 2004)

By working as a community we can increase the life chances of everyone in our community.

C. Community Planning Process

“We aim to make British Columbia the best educated, most literate jurisdiction on the continent.”

Premier Gordon Campbell
Swearing in ceremony Speech
June 16, 2005

Gordon Campbell wishes to leave as part of his legacy for the 2010 Winter Olympics, a highly-literate and skilled populous. Launched in 2005, ‘Literacy Now’ is a vital component of the Legacies 2010 initiative: with a fund of \$5 million from the provincial government. The organization is dedicated to identifying local literacy needs and increasing participation, sustainability and performance through partnerships, mentoring and communities (Literacy Now, 2005). The heart of this goal is to provide opportunities to discuss literacy at a community level. The hope is that literacy will be one of the lasting legacies of the 2010 Olympics in Vancouver, B.C.

Communities are encouraged to develop a District Literacy Plan that demonstrates collaboration with all community partners. This plan will include the following components from the ReadNOW BC framework:

1. School Readiness in Young Children
2. Reading Success in Schools
3. Reading Success for Adults
4. Reading Success for Aboriginal People

D. District Context

School District No. 57 (Prince George) is located in the centre of the province, extending north to include the town of Mackenzie, south to Hixon, and east to include McBride and Valemount. The district encompasses 52,000 square kilometers and is the second largest school district in the province in geographical size. It has a total student population of 13,776 students enrolled in 36 elementary schools, one middle school, 2 junior high schools, 8 secondary schools, and a Centre for Learning Alternatives which includes Continuing, Distance, International and Alternate Programs. The number of aboriginal students in all of our schools has increased from 1,244 in February 07 to the most current number of 3,286 in February 09. The school district administers a budget of \$130,236,252 and employs 776.6 (f.t.e.) teachers and 700 (f.t.e.) support staff.

The Prince George School District faces the unique challenge of being a large district with three outlying communities included within our boundaries. Approximately 9% of our student population live in McBride, Mackenzie and Valemount. Our district has a significant segment of the population with socioeconomic issues. According to the Ministry of Children and Families Vulnerability Index, 4 of the 14 elementary schools in the province with the highest number of at risk students are located in Prince George. The school district also receives a number of First Nation students from outlying and remote areas of the north who come to attend school and stay with relatives and friends.

District Profile

- 24% aboriginal students
- 8% ESL students
- 8% Special Needs students
- 5% French Immersion students

Student Support Programs

- FASD Regional Program
- Camp Trapping
- Hospital/Detox
- SET BC Program
- Area Support Teams of District
Itinerant Staff
- Career and Technical Centre at
College of New Caledonia
- Carrier Language and Culture
Program
- Aboriginal Art and Culture
Program

Programs of Choice

- French Immersion
- Advanced Placement
- Montessori
- Career and Technical Centre
- Continuing and Distance Education
- Alternate Education
- Traditional
- Fine Arts

Northern communities have been facing many challenges; an unprecedented downturn in the forest sector led by a collapse in the U.S. housing market means that more than 3,000 forestry jobs have been lost in the past two years. According to the Prince George Citizen Newspaper on May 13 2009, Prince George, with its more diversified economy, has shown more resilience than communities like Mackenzie, which has seen all its forestry plants shut down causing an estimated 1,600 job losses in the community of 4,500.

School District No. 57 faces other challenges as well. Being the second largest school district in the province geographically, means distances can be challenging. Each day 4,500 students ride on school buses totaling 11,400 km a day. It is interesting to note that 11,400 km. a day times 186 school days a year means buses travel a total of 2.1 million km per year. Northern winter conditions often make travelling dangerous and difficult for months at a time. Also, communication for rural communities is often an issue.

Despite these many challenges, communities within School District No. 57 have a “can do” attitude and a resilient spirit.

A. Overview

Since School District No. 57 includes four distinct community areas, the District Literacy Plan will include a summary of literacy planning in all four communities. Each Community’s Literacy Planning is at a different stage of development. For instance, in Prince George and Valemount, community literacy planning is in progress. Community literacy task groups have been established and these groups are considering current literacy programming, discussing assets and challenges, looking for opportunities to work together and planning for action. Mc Bride and Mackenzie however, continue to be at the awareness stage.

For each Community, the community profile, context, and information about literacy planning specific to that community is included.

II

McBride

A. Community Profile

The community of McBride is located on the Yellowhead Highway 16 in the heart of the Robson Valley. McBride is 211km east of Prince George and is accessible by rail, bus and small aircraft. Dunster is a small community located 35 km from McBride and 246 km from the School District Office in Prince George on Highway 16 East. This community is rich in history and known for its artistic endeavors. The main industries in these communities are forestry, agriculture, and tourism.

The town of McBride has a population of 711 people, but in the greater area there are approximately 2,500 people. There are three public schools in the McBride area; McBride Centennial Elementary enrolling 124 students, Dunster Elementary enrolling 30 students and McBride Secondary enrolling 121 students.

A. Community Context

Cutbacks in the forest industry continue to affect McBride. In the fall of 2006, *McBride Forest Industries* went bankrupt, and therefore, there was a loss of 60 jobs (Citizen March 8th, 2008). Some families are waiting to see if they need to move for employment or if they will they are able to find other jobs in their community.

B. Stage of Planning- Community Literacy Planning is not yet taking place.

In November 2008, I travelled to McBride and Dunster to meet with a number of school district personnel and community members to generate interest in applying for funding from 2010 Legacies Now.

C. Planning process to date (to create community literacy plan)

As yet, there is not a formalized task group that is leading the community planning process. This community has not applied for funding from 2010 Legacies Now and to date is not following the Community Literacy Planning Guide to create a plan. Melinda Worfolk, the Regional Literacy Coordinator and I have both travelled to McBride to talk people whom we think will be able to develop a community literacy plan.

The first step for the community could include: initiating a meeting of interested people involved in community services, the library, early childhood programs, and schools.

D. References /Potential Partners

Children and Family Development- Ministry of
300 Robson Centre McBride
Tel. 250 569-3760

Infant Development Program

Infant Development Consultant provides out reach from birth to age three to help determine if your child is meeting developmental milestones, encourage growth in physical, intellectual, and social skills, and promote healthy development.

942 3rd Ave.
McBride
Tel. 250 569-2266

McBride Adult Literacy Program

McBride Adult Literacy Program teaches adults basic literacy skills to improve both written and verbal communication.

942 3rd Ave. McBride
Tel.250 569-2200

Northern Interior Health Unit

Provides a variety of health programs and services including: Parenting support, and Vision and Hearing Screening.

1126 5th Ave. McBride
Tel. 250 569-2251

McBride & District Public Library

241 Dominion
Tel. 250 569-2411

Parenting Programs

Provides outreach family support, How to Talk so Kids will Listen, How to Listen so Kids will Talk, Supported Child Care.

942 3rd. Ave. McBride
Tel.250 569-2266

Robson Valley Home Support Society

Organization offering many services to the elderly, disabled, children, families, women and families in crises. Programs such as the following: Parenting Programs, Toy Lending Library, McBride Adult Literacy Program, and Employment Services

942 3rd Ave. McBride
Tel. 250 569-2266

III

Mackenzie

A. Community Profile

Mackenzie is located in the Northern Rocky Mountain Trench, about 190 km north of Prince George. Mackenzie is the gateway to the largest manmade lake in Canada, Williston Lake, and offers a variety of outdoor recreational activities for families. Mackenzie's economy is dependent on the forest industry. Currently, local companies are looking towards servicing mining exploration and the development sector. Mackenzie has a population of 4,500 and has three public schools in the town; namely, Mackenzie Elementary-184 students, Morfee Elementary-170 students, and Mackenzie Secondary -274 students.

B. Community Context

"We're happy. Our membership has been outside our mill for more than nine months now."
PPWC Local 18 president Dave Seright speaking about Canfor's plan to reopen a sawmill in Mackenzie
(The Prince George Citizen, May 5, 2009)

In the last year the loss of forestry jobs in the town has continued to affect all families in Mackenzie. *Canfor* closed one of its two sawmills in Mackenzie in the summer of 2007 which meant the loss of 130 jobs. Another 75 jobs were cut with the elimination of the third shift in *Canfor's* second sawmill. *AbitibiBowater's* newsprint mill, employing 240 people shut down in February 2008 and is not expected to start up again. Also, two *AbitibiBowater* sawmills employing 240 workers shut down indefinitely. *East Fraser Fiber* also dropped a shift costing another 40 jobs. All these closures and loss of jobs means families in the area face an uncertain future. However, Mackenzie residents are optimistic their town will survive. The plan to re-open a *Canfor* sawmill in early July with one shift means 60 workers will be back to work. The District of Mackenzie is also providing property tax reductions worth \$300,000 over the next three years to assist local citizens.

We have not seen the movement I had expected. Many people have gone to look at places where they have a spouse working and have come back discouraged. Even if they could sell their home in Mackenzie it would be for around \$150,000 and house in other towns are going for \$350 000. Who knows what the summer will bring.
Lori Dennill, Principal of Morfee Elementary School, June 2nd, 2008

C. Stage of Planning-Mackenzie has not submitted an Expression of Interest to Literacy Now for the community.

D. Planning process to date

As yet, there is no formalized task group leading a community literacy planning process. This community has not applied for funding from 2010 Legacies Now and to date is not following the Community Literacy Planning Guide to create a plan.

Melinda Worfolk, the Regional Literacy Coordinator and I have both travelled to Mackenzie to talk to people whom we think will be able to develop a community literacy plan.

The first step for the community could include: initiating a meeting of interested people involved in community services, the library, early childhood programs, and schools.

E. References /Potential Partners

Children and Family Development- Ministry of

Ministry of Children and Family Development provides various services: relating to children and families such as child protection, child abuse/neglect investigations, and social workers.

540 Mackenzie Blvd.

Tel. 250 997-3966

College of New Caledonia-CNC

CNC is a Community college offering a variety of vocational, professional development, personal interest, university credit, educational upgrading, and special program courses.

540 Mackenzie Blvd.

Tel.250 997-7200

Counselling Services Society

Counselling Services Society offers a variety of social services including programs for children, teens, and adults; such as, Family Services Program, Infant Development Program, Programs for Children, Programs for Teens, and Programs for Adults.

220 Mackenzie Blvd.

Tel.250 997-6595

Mackenzie Public Library

400 Skeena

Tel. 250 9976343

Northern Interior Health Unit

Northern Interior Health Unit provides a variety of health programs and services including Pre-Natal Classes, Speech and Hearing Clinics.

45 Centennial Dr.

Tel. 250 997-3263

Supported Child Development Program

Staff ensures that children who need extra support are able to participate in a typical community child care setting.

220 Mackenzie Blvd.

Tel. 250 997-6595

IV

Valemount

A. Community Profile

Valemount is an Alpine type village situated between the Rocky Mountains to the east, the Monashee Mountains to the south and the Caribou Mountains to the west. In terms of driving distances, Valemount is 300 km to Prince George, 320 km to Kamloops, 120 km to Jasper, and 495 km to Edmonton. With a total population of 1,195 Valemount has two schools: Valemount Elementary (141 students), and Valemount Secondary (126 students). Valemount offers visitors spectacular scenery in both summer and winter. Mount Robson, the highest peak in the Rocky Mountains, is located only 20 minutes away from Valemount in the Mount Robson Provincial Park. Valemount is internationally known as a skiing destination offering both heli-skiing and many snowmobile trails.

B. Community Context

"Even the most hopeful people have given up on the mill. They must decide now, to move or accept a lower paying tourism job here and make it work. I think we will see a more transient population of young people filling our tourism jobs as families just can't survive on the low wage."

Pat Powell, Learning Consultant, Valemount Learning Centre. Dec 2, 2008

In the past few years Valemount has experienced many challenges and economic setbacks. The Valemount Learning Centre has seen a significant rise in the number of adults who want to upgrade their education to get a job. It is difficult for some clientele to open up and ask for help. In a small town there is a need to house many kinds of support in one building for clientele convenience and to protect the client's privacy.

C. Stages of Planning (implementation stage)

The 'Literacy Now' Community Literacy Plan process for Valemount was initiated by the Columbia Basin Alliance for Literacy in June of 2007. The Valemount coordinator, Janey Weeks, was hired, and has been invaluable in this position. Unfortunately, she will be leaving this position May 2009.

D. Partnerships formed so far

There is much interest in community partnerships in Valemount (see Appendix 1 *Valemount Area Community Plan 2009: Second Plan Yearly Review*, for full details of their plan.)

E. References - To assist with on-going literacy planning for the Valemount community, a Contact Information List is provided.

Contact Information

Children and Family Development- Ministry of

Provides various services relating to children such as child protection, community living, services for the mentally disabled, child abuse/neglect investigations and social workers.

300 Robson Centre McBride B.C

Tel. 250 569-3760

Columbia Basin Alliance for Literacy

Janey Weeks (until May 09) Work telephone 250 566-9107

Email jweeks@thehub.literacy.bc.ca

Infant Development Program

Infant Development Consultant provides outreach to children from birth to age three to help determine if your child is meeting developmental milestones, encourage growth in physical, intellectual, and social skills, and promote healthy development.

99 Gorse St. Valemount B.C.

Tel. 250 566-9107

Learning Centre

The Learning Centre offers Industrial, academic and general interest courses. Also offers employment counseling and job search skills.

99 Gorse St. Valemount B.C.

Tel. 250 566-4601

Northern Interior Health Unit

The Northern Interior Health Unit provides a variety of health programs and services including: Speech and Hearing Services School and Youth Services and Pre-Natal Classes.

1445 5th Ave. Valemount, B.C.

Tel. 250 566-9138

Robson Valley Home Support Society

Organization offering many services to the elderly, disabled, children, families, women and families in crises. Programs include Toy Lending Library, and Parenting Programs.

99 Gorse St. Valemount B.C.

Tel. 250 566-9107

Valemount Community TV

Local TV station personal promotes community awareness by working on literacy with students in the area.

101 Gorse St. Valemount B.C.

Tel. 250 566-8288

Valemount Play School

101 Gorse St. Valemount B.C.

Tel. 250566-4826

Valemount Public Library

1090 Main St. Valemount B.C.
Tel. 250 566-4367

V

Prince George

A. Community Profile

Prince George is situated where the Nechako River joins the Fraser River near the center of British Columbia. The north-south Highway 97 and the east-west Highway 16 intersect at Prince George. It is 786 km northeast of Vancouver on Hwy 97 and nearly midway between Jasper, on the BC/Alberta border, and Prince Rupert, on BC's West Coast, on Hwy 16 (the Yellowhead Hwy). The city is also the junction of the British Columbia and Canadian National Railways. The main industries are forestry, resource management, mining and oil and gas.

With a population of 78,000, Prince George is an interesting blend of rural and urban neighbourhoods. For instance, in the city of Prince George there are 32 elementary schools, one middle school, 2 junior highs and five high schools, totally 14,051 students, but some schools are in sub-divisions, some are downtown and some are in rural settings such as Shady Valley (14.5 km), Salmon Valley (31.5 km), Nukko Lake (38.4 km), Giscome (46.5 km) and Hixon (61.4 km).

B. Community Context

“John Rustad foresees a challenging year ahead. But the Prince George – Omineca MLA is upbeat about developments in mining and other sectors that offer diversification in the North.”
The Prince George Citizen, Wed.
March 19, 2008

In the past few years the forestry in the Prince George area has been hit hard. Examples include: Gateway Forest Products succumbing to bankruptcy proceedings with a loss of about 50 jobs, Winton Global's sawmill cutting a third shift in 2007 (80 jobs) planning to be closed indefinitely again next summer, Dunkley Lumber reducing shifts at planer mill and moving to three-day work week (60 jobs), Lakeland Mills moving to a four day work (25 jobs), Canfor cutting shifts at Rustad Bros. at Polar and Clear Lake (225 jobs), and Brink Forest Products operating at 60 percent (50 jobs) The fallout from the fire that destroyed North central Plywood's Plant affected an estimated 250 sawmill workers, 40 loggers and 40 truckers. Despite these hardships there are some examples of growth in the region. Examples include the 36 million dollar Prince George Airport runway expansion, investments at UNBC and CNC and the intension to build a 50 million dollar bioenergy plant in the BCR industrial site.

The inner city of Prince George includes a number of high needs schools as supported by the Ministry of Children and Families Vulnerability index. For rural families, weather conditions and long distances are daily challenges. Dr. Clyde Hertzman, of the University of British Columbia, says Prince George has “big city problems with little city

resources.” *Despite all these challenges, Prince George has a “can do” attitude and a northern sense of working together to tackle these issues.

A. Stages of Planning (implementation stage)

The Prince George Literacy Now Task Group consisting of Marcia Timbres (recently retired) Dean, College Foundations, College of New Caledonia; Marc Saunders, Public Service Manager, Prince George Public Library; Rod Mulligan, retired teacher; Sharel Warrington, Trustee, Board of Education; School District No. 57 personnel; Keith Henry Literacy Coordinator, Native Friendship Centre; and Helen Domshy the Literacy Outreach Coordinator, meet monthly. This year with the assistance of facilitator Dr. Theresa Healy, we developed a *Literacy Now Prince George Strategic Plan* to work on next year (see Appendix 2 for a copy of the new plan.) A copy of the *2010 Legacies NOW Report Form and Guidelines: Literacy Now Community Program Stage Three Implementation 2008-2009* submitted in 2009 (see Appendix 3) is a record of the community’s progress to date.

B. Partnerships formed so far

Strong partnerships have been developed between School District No. 57 and some community organizations to support literacy programs A copy of *Literacy Programs Prince George B.C. 2009* prepared by Helen Domshy is provided as Appendix 4.

The following charts attempt to capture many school district programs, community programs based in schools, community programs with school district connections and in school programs with outside funding. As a decentralized School District that spans several communities, there are many individual school-based initiatives that partner with their communities.

0-5Year Olds -Early Learning	5 Year Olds	6-8 year olds Primary
School District Programs	School District Programs	School District Programs
StrongStart BC Early Learning Centres <ul style="list-style-type: none"> • Peden Hill Elementary • Ron Brent Elementary • Harwin Elementary • Outreach StrongStart in rural schools <ul style="list-style-type: none"> Shady Valley Salmon valley Giscome Hixon Ready Set Learn Early Learning Coordinator	K Screening (Dynamic Indicators of Basic Early Literacy Skills)Jan. Assessment Early Literacy Resource Teacher (K-7) District Resource Centre- K-12 Liaison with CNC, UNBC, Public Library	Pro-D for Teachers
Community Programs with District Connection	Community Programs with District Connection	In school Program with Outside Funding
South Fort George – Family Resource Centre (e.g. Power Play Program) Children First Success By Six e.g. Carney Hill StrongStart Grant Parent Support Group Culture in class Pineview science workshop	Public Health Nurse	Primary Project (4 inner city schools) Community Literacy Role models <ul style="list-style-type: none"> ○ Starbucks – books for kids ○ Spruce Kings and “Skate for Literacy” ○ Reading is Cool Changing The Story-Parent Engagement Pilot three schools
Community Programs In Schools	Community Programs In Schools	Community Programs In Schools
Pre-Schools/Daycares in Schools <ul style="list-style-type: none"> • Glenview Elementary • Carney Hill Elementary • CNC ECE students 	Y After School Care for five year olds and up <ul style="list-style-type: none"> ○ Harwin ○ Peden Hill 	Raise a Reader
Combination Programs School based/Community/Other	Combination Programs School based/Community/Other	Combination Programs School based/Community/Other
	Early Development Instrument (EDI) <ul style="list-style-type: none"> • 2005/09 • 2005/06 Roots of Empathy Welcome to Kindergarten (seventeen schools)	Book Fairs

Examples of School District Initiatives and Partnerships-continued

Intermediate	Secondary
Special Education programs Area Support Teams Learning Assistance Learning Team Grants Network Performance Based Schools DART grade 3 and 6 assessment Literacy Networking Sessions Pro-D for Teachers <ul style="list-style-type: none"> • Links to province-Webcast Sessions • Adrienne Gear • Leadership Academies with Faye Brownlie • Assessment For Learning Workshops • Professional Learning- Series of Workshops • 	Special Education programs Area Support Teams Learning Assistance Learning Team Grants Network Performance Based Schools DART Assessment (Gr 9) Pro-D for Teachers/Administrators Links to province-Webcast Sessions <ul style="list-style-type: none"> • Leadership Academies with Faye Brownlie • District Workshops with Faye Brownlie • Assessment For Learning Alternate programs- School Based//Community
Community Program with District Connection	<ul style="list-style-type: none"> • Community Program with District Connection
<ul style="list-style-type: none"> • MCF Literacy Innovator Coaches (K-7) • United Way Funding 	
In School Programs with Outside Funding	In School Programs with Outside Funding
Communication @ Families <ul style="list-style-type: none"> • Community worker, circle parents, parent rooms • Engaging Parents (Shady Valley, Harwin, Quinson) Ab. Ed. Board/ Vancouver Foundation Community Literacy Role models <ul style="list-style-type: none"> • Starbucks – books for kids • Spruce Kings and “Skate for Literacy” • Leos Leaders • 	Communication @ Families <ul style="list-style-type: none"> • Community worker, circle parents, parent rooms • Engaging Parents (Duchess Park) Ab. Ed. Board/ Vancouver Foundation

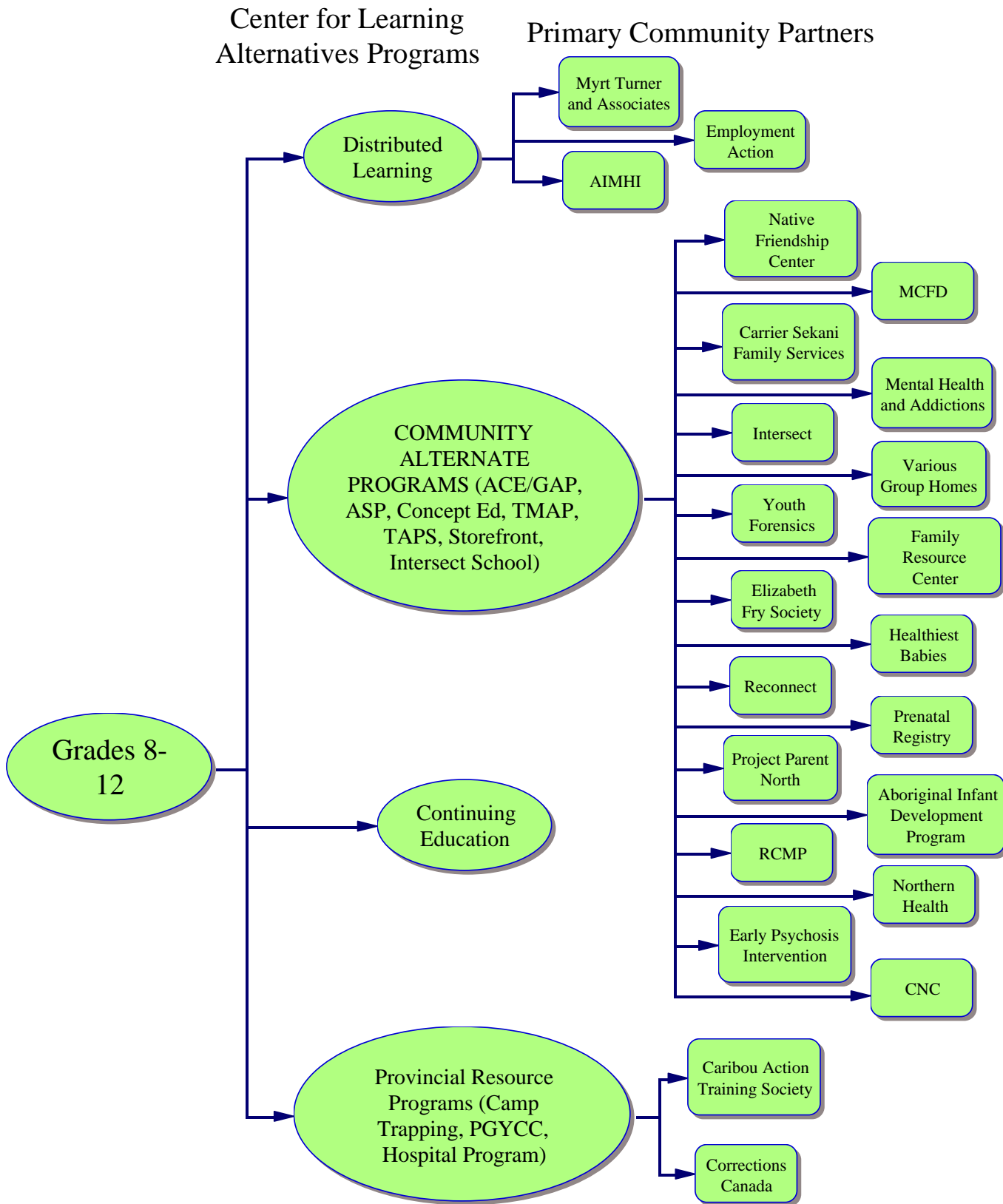
Other Community/School District No.57 Partnerships

School District No.57 together with many other partners offers a variety of Community Alternative Programs and Provincial Resource Programs to meet the needs of our community. To illustrate these partnerships, please see the following charts:

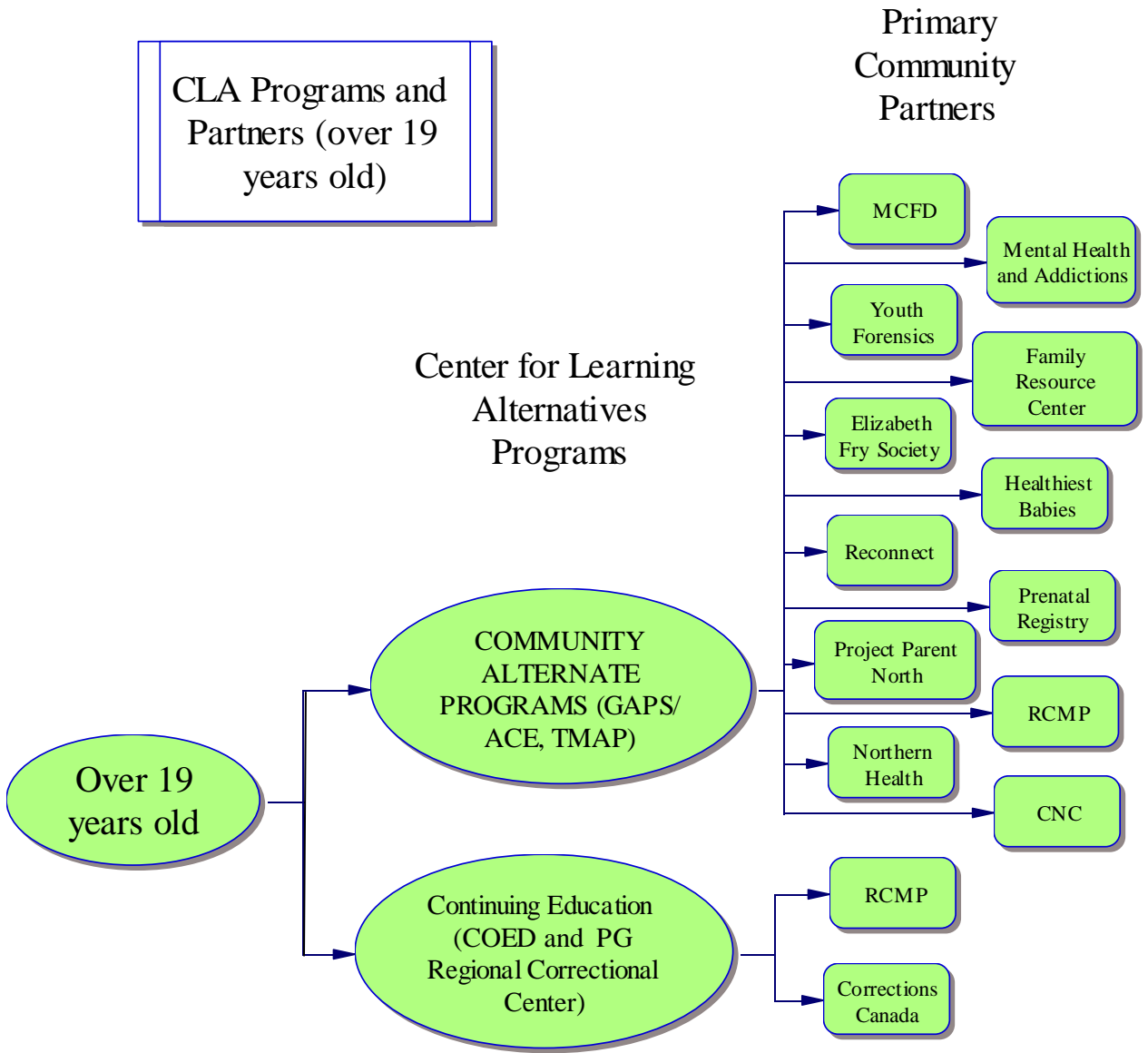
- Community Learning Alternatives Programs and Partners K-7
- Community Learning Alternatives Programs and Partners 8-12
- Community Learning Alternatives Programs and Partners for 19 years old

Please note Programs named ACE and GAP are currently called TEAM

CLA Programs and Partners (Gr. 8-12)



CLA Programs and Partners (over 19 years old)



C. References - Prince George Literacy Now Task Force organizations

College of New Caledonia

College of New Caledonia offers university transfer, diploma, technical, and vocational programs.

3330 22nd Ave. Prince George B.C.

Tel. 250 562-2131 switchboard

Prince George Public Library

Reserve and inter-library loans, books, large print, records, CDs, audio and talking books, home shut-in service, videos and children's programs and free internet access.

887 Dominion Street Prince George B.C.

Tel. 250 563-9251

School District No.57

School District No.57 oversees education from Valemount to Mackenzie.

School District No.57 provides specialized programs, services, and psychologists.

2100 Ferry Ave. Prince George B.C.

Tel. 250 561- 6800

Prince George Native Friendship Centre

Multi-service organization with a variety of programs meant to address the need for education, personal support, emotional and spiritual well-being, economic development, employment, vocational needs, and social services.

1600 3rd Ave. Prince George B.C.

Tel. 250 564-3568

VI

Future Planning – District Literacy Plan

District staff is committed to continuing to work with community partners to develop a vision for literacy initiatives in Prince George, Mc Bride, MacKenzie and Valemount.

District staff will

- work with the Literacy Now Coordinators to explore and identify ways in which we can work together and benefit from having a District Literacy Plan
- continue as members of the local and regional Literacy Now groups
- continue as members of Success by 6 Council of Partners and Children First Steering Committee
- continue partnerships that support district alternative programs
- continue to explore the expanding area of early childhood literacy programs
- expand district participation in community events that promote literacy

VII

Summary

The District Literacy Plan (School District No.57) is grounded in the belief that strong relationships between the community and the school district are a crucial component of life long learning. The purpose of this plan is to document working relationships that support literacy within our communities. The plan encompasses initiatives from early learning through to adult learning. The District Literacy Plan has been collaboratively developed with input from School District No. 57 personnel, the Aboriginal community, public libraries, early learning organizations and community organizations. It is a statement of commitment by School District No. 57 to work with community partners to improve literacy.

Appendix 1 Valemount Area Community Literacy Plan 2009: Second Plan Yearly Review

Appendix 2 Literacy Now Prince George Strategic Plan

Appendix 3 2010 Legacies Now Report Form and Guidelines: Literacy Now Communities Program Stage Three Implementation 2008-2009

Appendix 4 Literacy Programs Prince George 2009